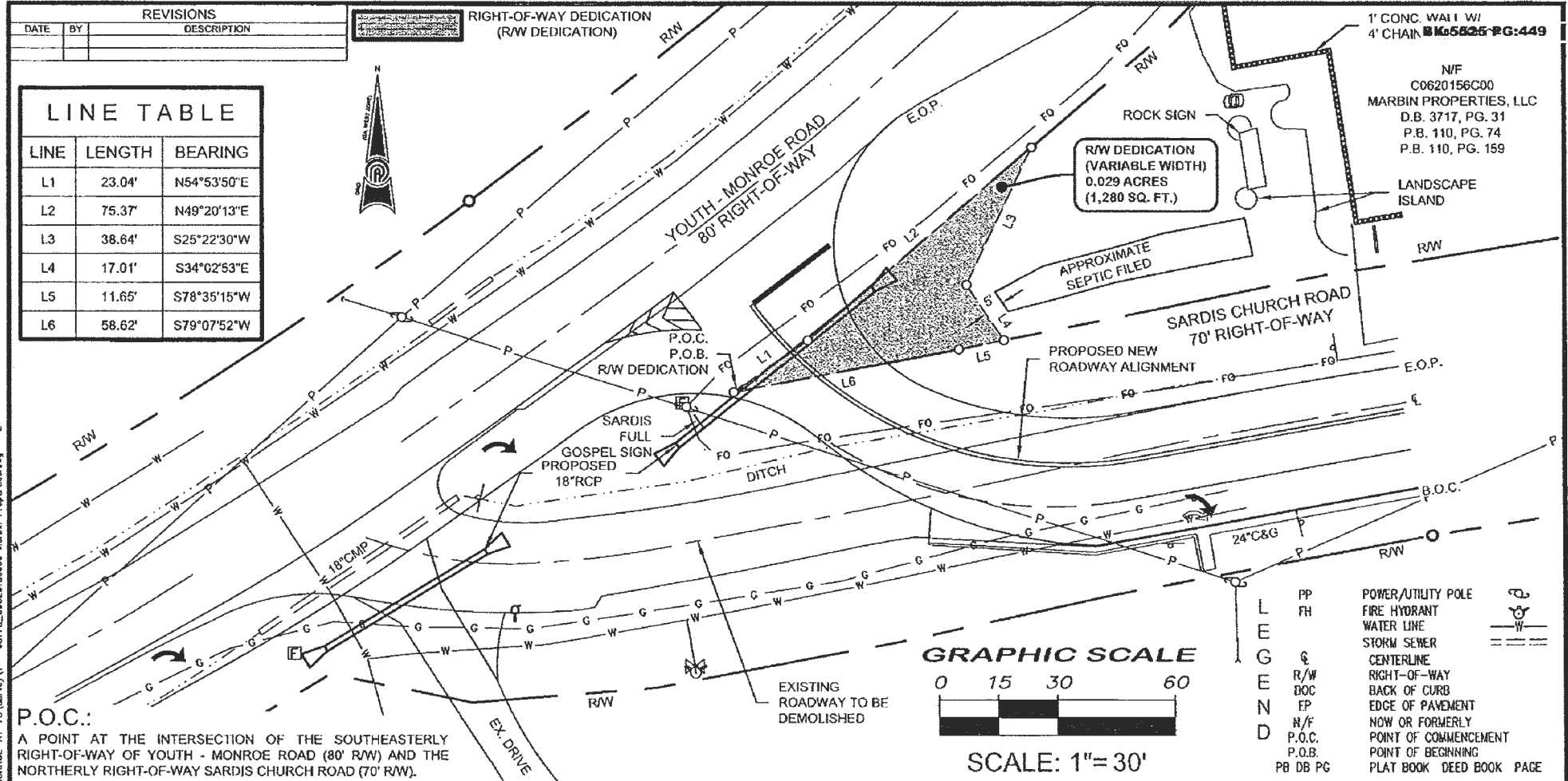


REVISIONS		
DATE	BY	DESCRIPTION



RIGHT-OF-WAY DEDICATION  
(R/W DEDICATION)

LINE TABLE		
LINE	LENGTH	BEARING
L1	23.04'	N54°53'50"E
L2	75.37'	N49°20'13"E
L3	38.64'	S25°22'30"W
L4	17.01'	S34°02'53"E
L5	11.65'	S78°35'15"W
L6	58.62'	S79°07'52"W

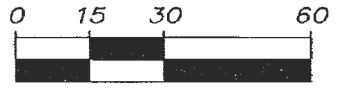


1' CONC. WALL W/  
4' CHAIN  
N/F  
C0620156C00  
MARBIN PROPERTIES, LLC  
D.B. 3717, PG. 31  
P.B. 110, PG. 74  
P.B. 110, PG. 159

R/W DEDICATION  
(VARIABLE WIDTH)  
0.029 ACRES  
(1,280 SQ. FT.)

**P.O.C.:**  
A POINT AT THE INTERSECTION OF THE SOUTHEASTERLY  
RIGHT-OF-WAY OF YOUTH - MONROE ROAD (80' R/W) AND THE  
NORTHERLY RIGHT-OF-WAY SARDIS CHURCH ROAD (70' R/W).

**GRAPHIC SCALE**



**SCALE: 1" = 30'**

LEGEND	
PP	POWER/UTILITY POLE
FH	FIRE HYDRANT
W	WATER LINE
SS	STORM SEWER
C	CENTERLINE
R/W	RIGHT-OF-WAY
DOC	BACK OF CURB
EP	EDGE OF PAVEMENT
N/F	NOW OR FORMERLY
P.O.C.	POINT OF COMMENCEMENT
P.O.B.	POINT OF BEGINNING
PB DB PG	PLAT BOOK DEED BOOK PAGE

E:\workspace\G03170\YOUTH-MONROE-AT-78\SURVEY\1 - 03170L\_C0620156C00 Marbin Properties.dwg 2

Parcel: C0620156C00	Owner: MARBIN PROPERTIES, LLC
Date: 08/14/2024	
Land Lot: 43	
District: 4th	County: WALTON
Job #: T03170L	Scale: 1" = 30'
Field By: BRP	Drawn By: NAP
	Checked By: DEJ

**PRECISION**  
Planning Inc.

planners • engineers • architects • surveyors  
Georgia Land Surveying Firm COA # LSF000313  
400 Pike Boulevard, Lawrenceville, Ga 30046  
770.338.8000 • www.ppl.us • info@ppl.us

RIGHT-OF-WAY DEDICATION EXHIBIT FOR:  
WALTON COUNTY

YOUTH MONROE RD AT US 78 IMPROVEMENTS  
(SARDIS CHURCH RD INTERSECTION)

DRAWING NUMBER  
1 OF 1