



Old Mill Properties, LLC



# Thomas Creek



- **4 Bedrooms**
- **2 Bathrooms**
- **Approx 1,800SF**
- **Open Floorplan**
- **Covered Patio**
- **Brick & Hardiplank Exterior**

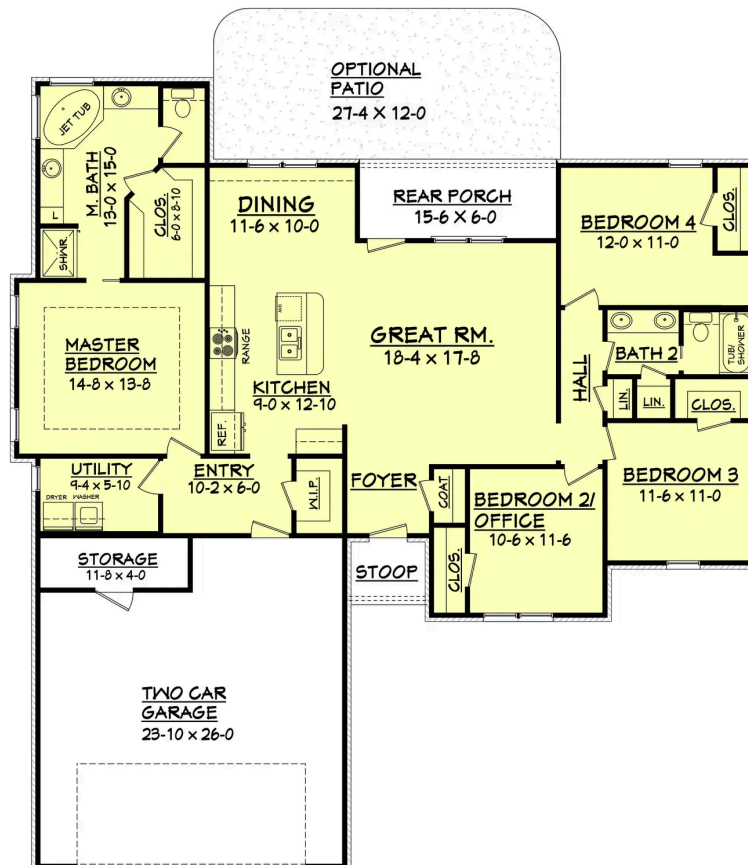


**\*\*Information contained herein is deemed reliable but not guaranteed. Floorplans & elevations are renderings and subject to change.\*\***

# Hillcrest



- **4 Bedrooms**
- **2 Bathrooms**
- **Approx 1,830SF**
- **Open Floorplan**
- **Covered Patio**
- **Brick & Hardiplank Exterior**



**\*\*Information contained herein is deemed reliable but not guaranteed. Floorplans & elevations are renderings and subject to change.\*\***



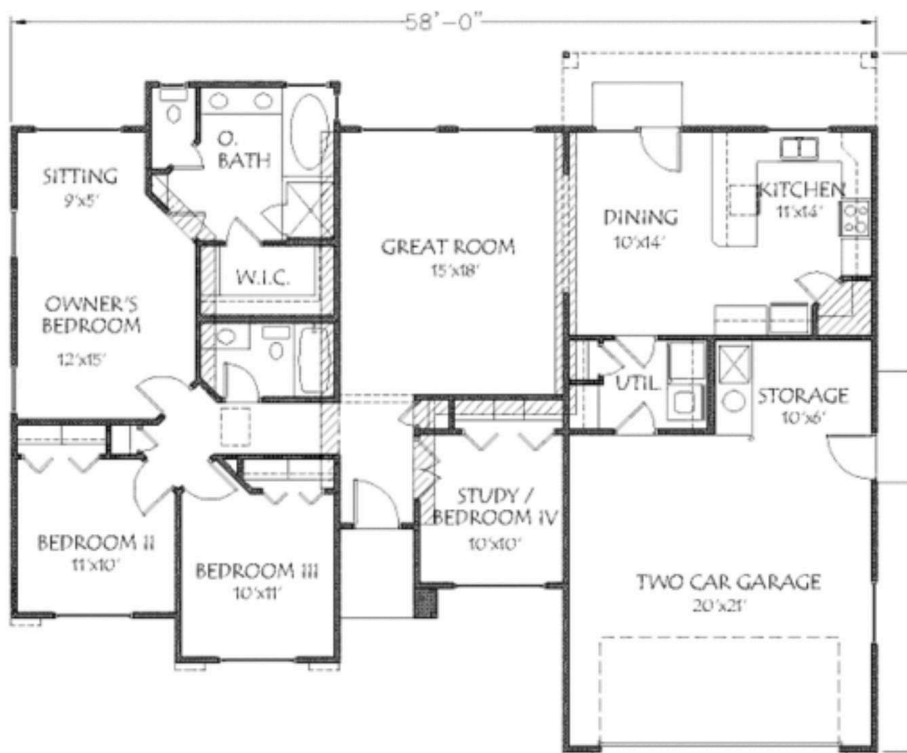
Old Mill Properties, LLC



## Brittany



- 4 Bedrooms
- 2 Bathrooms
- Approx 1,800SF
- Open Floorplan
- Covered Patio
- Brick & Hardiplank Exterior



**\*\*Information contained herein is deemed reliable but not guaranteed. Floorplans & elevations are renderings and subject to change.\*\***

# Summerville



- 4 Bedrooms
- 2 Bathrooms
- Approx 1,850SF
- Open Floorplan
- Covered Patio
- Side Entry Garage
- Brick & Hardiplank Exterior

