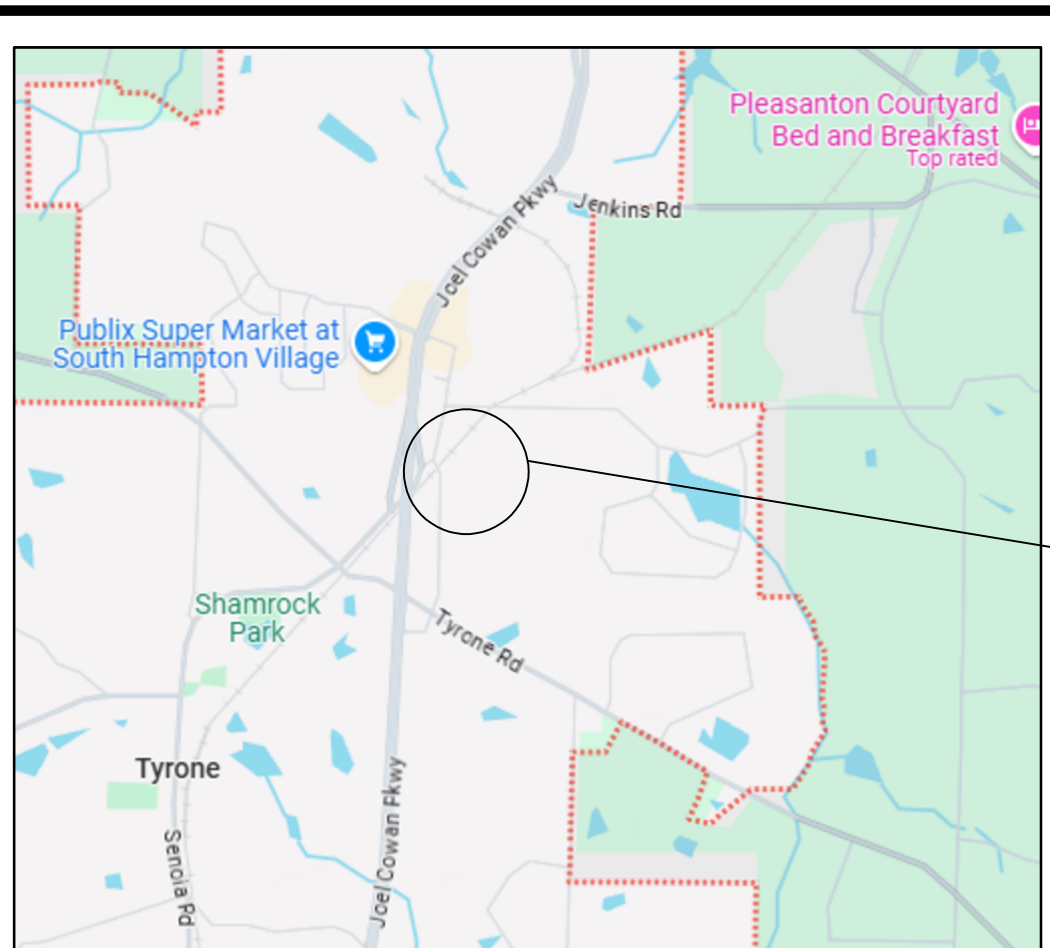
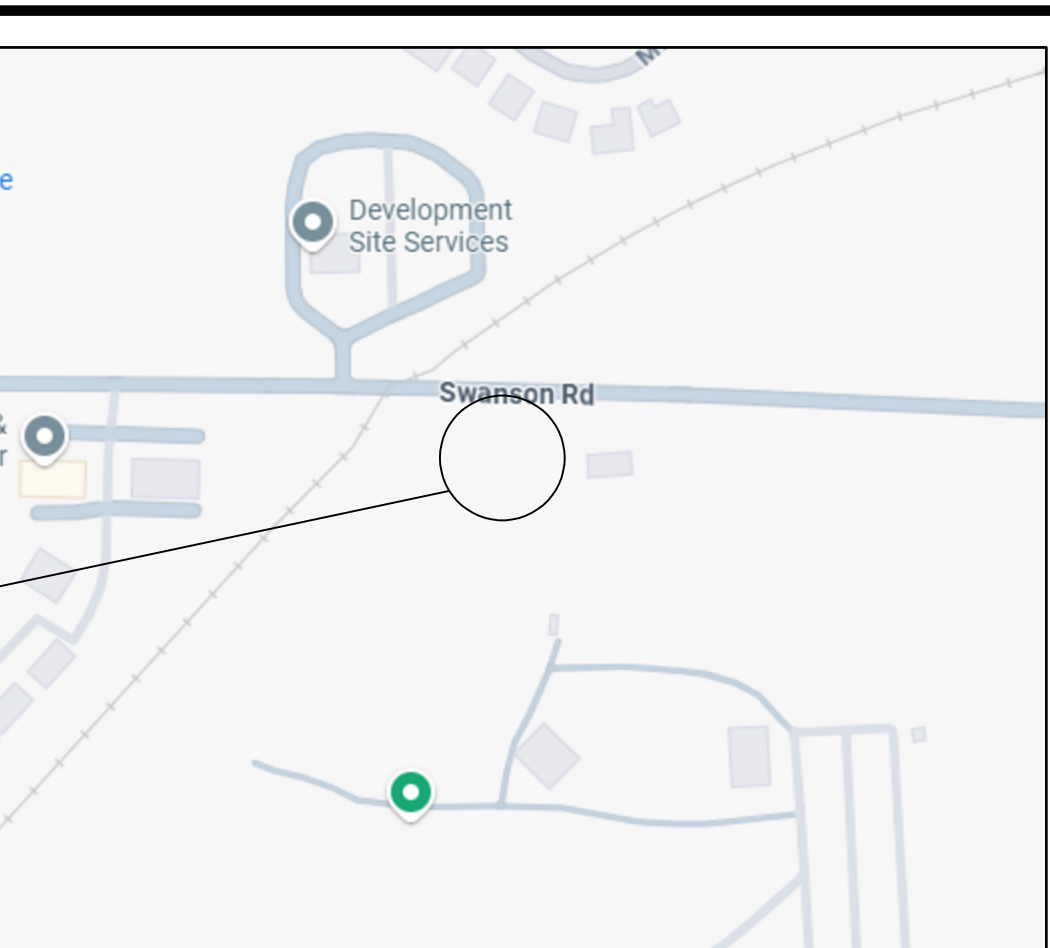


# HANDLEY PARK PUBLIC WORKS BUILDING

TYRONE, GEORGIA

<div><div>ELECTRICAL ENGINEER</div><div>GOODWYN, MILLS, &amp; CAWOOD 2660 EASTCHASE LANE SUITE 200 MONTGOMERY, ALABAMA 36117 PHONE: 334.271.3200</div></div> <div><div>MECHANICAL ENGINEER</div><div>GOODWYN, MILLS, &amp; CAWOOD 6120 POWERS FERRY ROAD NW, SUITE 200 ATLANTA, GA 30339 PHONE: 770.952.2481</div></div>	<div>LOCATION MAP TYRONE, GEORGIA</div> <div></div>	<div>APPLICABLE CODES</div> <div>2021 INTERNATIONAL ELECTRICAL CODE 2021 INTERNATIONAL PLUMBING CODE 2021 INTERNATIONAL EXISTING BUILDING CODE 2021 INTERNATIONAL FIRE CODE 2021 INTERNATIONAL MECHANICAL CODE 2021 INTERNATIONAL FUEL, GAS CODE 2021 INTERNATIONAL ENERGY CONSERVATION CODE</div>	<div>VICINITY MAP TYRONE, GEORGIA</div> <div></div>	<div>INDEX TO DRAWINGS</div> <table><tr><th colspan="2">GENERAL</th></tr><tr><td>G1.01</td><td>TITLE SHEET, VICINITY MAP AND INDEX TO DRAWINGS</td></tr><tr><td>G2.01</td><td>ELECTRICAL LEGENDS, NOTES, AND SCHEDULES</td></tr><tr><td>G3.02</td><td>ELECTRICAL NOTES</td></tr><tr><th colspan="2">ELECTRICAL</th></tr><tr><td>E1.01</td><td>POWER PLAN &amp; LIGHTING PLAN</td></tr><tr><td>E2.01</td><td>ELECTRICAL DETAILS</td></tr></table>	GENERAL		G1.01	TITLE SHEET, VICINITY MAP AND INDEX TO DRAWINGS	G2.01	ELECTRICAL LEGENDS, NOTES, AND SCHEDULES	G3.02	ELECTRICAL NOTES	ELECTRICAL		E1.01	POWER PLAN & LIGHTING PLAN	E2.01	ELECTRICAL DETAILS
GENERAL																		
G1.01	TITLE SHEET, VICINITY MAP AND INDEX TO DRAWINGS																	
G2.01	ELECTRICAL LEGENDS, NOTES, AND SCHEDULES																	
G3.02	ELECTRICAL NOTES																	
ELECTRICAL																		
E1.01	POWER PLAN & LIGHTING PLAN																	
E2.01	ELECTRICAL DETAILS																	
		PROJECT LOCATION	PROJECT LOCATION															



POWER LEGEND	
	PANELBOARD, SURFACE MOUNTED.
	DISCONNECT SWITCH, NEMA 1, NON-FUSED, SUBSCRIPT INDICATES DISCONNECT SWITCH AMP RATING - SEE DISCONNECT SWITCH SCHEDULE.
	DISCONNECT SWITCH, NEMA 1, FUSED, SUBSCRIPT INDICATES DISCONNECT SWITCH AMP RATING - SEE DISCONNECT SWITCH SCHEDULE.
	DISCONNECT SWITCH, NEMA 3R, NON-FUSED, SUBSCRIPT INDICATES DISCONNECT SWITCH AMP RATING - SEE DISCONNECT SWITCH SCHEDULE.
	DISCONNECT SWITCH, NEMA 3R, FUSED, SUBSCRIPT INDICATES DISCONNECT SWITCH AMP RATING - SEE DISCONNECT SWITCH SCHEDULE.
	CLOSED CIRCUIT TELEVISION CAMERA LOCATION. PROVIDE 2 GANG BOX WITH 3/4" CONDUIT AS REQUIRED FOR ACCESS (MIN. 6") TERMINATE WITH INSULATING BUSHING.
	CLOSED CIRCUIT TV, 180°, MOUNTED @ +/- 20°, COORDINATE W/VENDOR ON COLUMN, PROVIDE SUPPORT AS REQUIRED.
	CLOSED CIRCUIT TV, 270°, MOUNTED @ +/- 20°, COORDINATE W/VENDOR ON COLUMN, PROVIDE SUPPORT AS REQUIRED.
	MOTOR - HORSEPOWER AS INDICATED.
	JUNCTION BOX CEILING MOUNTED. REFER TO SPECIFICATIONS FOR COLOR REQUIREMENTS FOR COVER.
	JUNCTION BOX WALL MOUNTED AT HEIGHT REQUIRED WITH FLEXIBLE CONNECTION TO EQUIPMENT.
	120 VOLT CONNECTION TO MOTORIZED DAMPER - VERIFY LOCATION W/ MECH. CONTRACTOR.

LIGHTING LEGEND	
	EXIT SIGN WITH BATTERY BACKUP CEILING/WALL MOUNTED - FILLED IN SECTION INDICATES NUMBER OF FACES. ARROWS AS INDICATED ON PLANS - PROVIDE UNSWITCHED CONDUCTOR FOR 24 HOUR OPERATION. LETTER "X" INDICATES FIXTURE TYPE. SEE LUMINAIRE SCHEDULE.
	EMERGENCY LIGHT WITH BATTERY POWER, CONNECTED TO UNSWITCHED HOT LEG. LETTER "X" INDICATES FIXTURE TYPE. SEE LUMINAIRE SCHEDULE.
	CEILING FAN, FURNISHED AND INSTALLED BY MECHANICAL CONTRACTOR, ELECTRICAL CONNECTIONS (POWER, FIRE ALARM, ETC.) BY ELECTRICAL CONTRACTOR.
	FLOOD LIGHT. LETTER "X" INDICATES FIXTURE TYPE. SEE LUMINAIRE SCHEDULE.
	CEILING MOUNTED LINE VOLTAGE OCCUPANCY SENSOR. LOCATE ACCORDING TO MANUFACTURER'S RECOMMENDATIONS.
	CEILING MOUNTED LOW VOLTAGE OCCUPANCY SENSOR. LOCATE ACCORDING TO MANUFACTURER'S RECOMMENDATIONS.
	PENDANT FIXTURE. LETTER "X" INDICATES FIXTURE TYPE. SEE LUMINAIRE SCHEDULE.

SECURITY LEGEND	
	VIDEO SURVEILLANCE CAMERA PROVIDED AND INSTALLED BY SECURITY CONTRACTOR. PROVIDE 2-GANG BOX WITH WITH 3/4"CAS REQUIRE FOR ACCESS (MIN.6"). TERMINATE WITH INSULATING BUSHING. COORDINATE WITH SECURITY CONTRACTOR. "WP4" INDICATES WEATHERPROOF EQUIPMENT. INTERIOR CAMERAS TO BE VERKADA#CD41. EXTERIOR CAMERAS TO BE VERKADA#CD41E. COORDINATE WITH OWNER.
	VIDEO SURVEILLANCE CAMERA (2 IMAGER) PROVIDED AND INSTALLED BY SECURITY CONTRACTOR. PROVIDE 2-GANG BOX WITH WITH 3/4"CAS REQUIRE FOR ACCESS (MIN.6"). TERMINATE WITH INSULATING BUSHING. COORDINATE WITH SECURITY CONTRACTOR. "WP4" INDICATES WEATHERPROOF EQUIPMENT. INTERIOR CAMERAS TO BE VERKADA#CD41. EXTERIOR CAMERAS TO BE VERKADA#CD41E. COORDINATE WITH OWNER.
	SECURITY ALARM CONTROL KEYPAD. KEYPAD PROVIDED AND INSTALLED BY SECURITY CONTRACTOR.
	CEILING MOUNTED 360 DEGREE MOTION DETECTOR. PROVIDED AND INSTALLED BY SECURITY CONTRACTOR. ROUTE SIGNAL CABLE TO SECURITY ALARM CONTROL PANEL.
	SECURITY ALARM CONTROL PANEL. PROVIDED AND INSTALLED BY SECURITY CONTRACTOR.
	SECURITY SYSTEM SIREN, CEILING MOUNTED. PROVIDED AND INSTALLED BY SECURITY CONTRACTOR. COORDINATE EXACT LOCATION AND QUANTITIES WITH OWNER.

BRANCH CIRCUIT LEGEND	
	CONDUIT OR RACEWAY EXPOSED TO VIEW. RUN PARALLEL OR PERPENDICULAR TO STRUCTURE. CONCEAL FROM VIEW AS MUCH AS POSSIBLE.
	CONDUIT OR RACEWAY EXPOSED TO VIEW. RUN PARALLEL OR PERPENDICULAR TO STRUCTURE. CONCEAL FROM VIEW AS MUCH AS POSSIBLE.
	CONDUIT OR RACEWAY CONCEALED IN CEILING CAVITY OR WALL.
	CONDUIT OR RACEWAY UNDERGROUND OR CONCEALED IN FLOOR SLAB.
	PHASE CONDUCTOR, NEUTRAL CONDUCTOR AND ISOLATED GROUND CONDUCTOR.
	HOMERUN. TICKS INDICATES NUMBER OF CONDUCTORS. NO TICKS INDICATES 1 PHASE, 1 NEUTRAL, 1 GROUND CONDUCTOR.
	UNDERGROUND HOMERUN. ARROW INDICATES NUMBER OF CIRCUITS. TICKS INDICATES NUMBER OF CONDUCTORS. NO TICKS INDICATES 1 PHASE, 1 NEUTRAL, 1 GROUND CONDUCTOR.

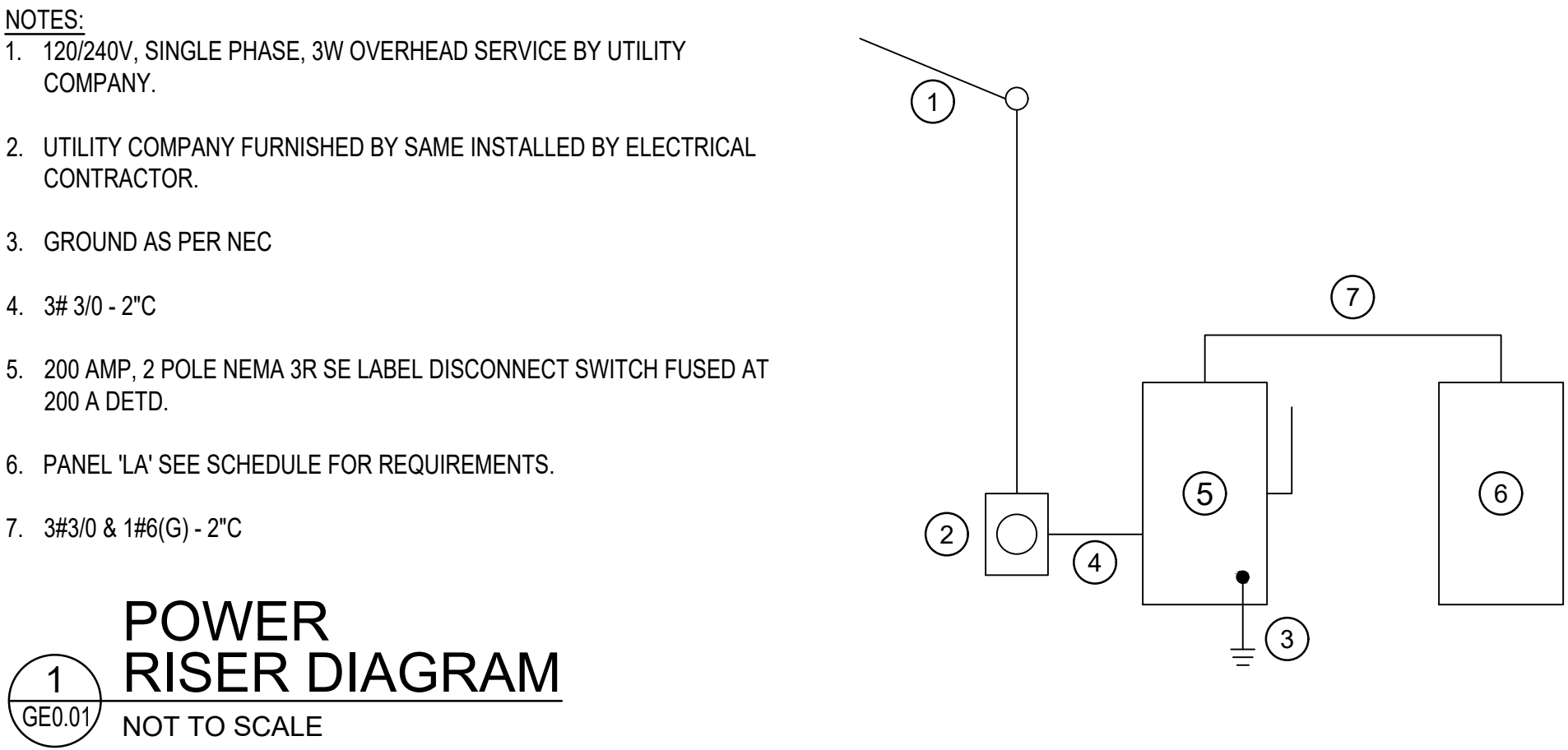
ELECTRICAL ABBREVIATIONS			
A	AMP	GRS	GALVANIZED RIGID STEEL
ACSR	ALUMINUM CONDUCTOR STEEL-REINFORCED	HD	HAND DRYER
AF	AMPS FRAME	HP	HORSEPOWER
AFF	ABOVE FINISHED FLOOR	KV	KILOVOLT
AIC	AMPS INTERRUPTING CAPACITY (SYM RMS)	KVA	KILOVOLT AMPERES
AT	AMPS TRIP	KW	KILOWATT
AWG	AMERICAN WIRE GAUGE	MIN	MINIMUM
(#)C	FIXTURE DESIGNATION (#) INDICATES #OF FIXTURES TOTAL	N12	NEMA 12 RATED FOR DUST ENCLOSURE
CONDUIT		NSR	NEMA 3R RATED FOR EXTERIOR USE
CKT	CIRCUIT	NIC	NOT IN THIS CONTRACT
CU	COPPER	NL	NIGHT LIGHT
DETD	DUAL ELEMENT TIME DELAY	NEC	NATIONAL ELECTRIC CODE
EC	EMPTY CONDUIT	PNL	PANEL
ELEC	ELECTRIC OR ELECTRICAL	P	POLE
EPR	ETHYLENE-PROPYLENE RUBBER INSULATION	PH	PHASE
EXR	EXISTING ITEM TO BE REMOVED	PSI	POUNDS PER SQUARE INCH
EX	EXISTING TO REMAIN	PVC	POLYVINYL CHLORIDE
EXIST		RECP	RECEPTACLE
FACP	FIRE ALARM CONTROL PANEL	REQD	REQUIRED
GFI	GROUND FAULT INTERRUPTER	RL	EXISTING ITEM TO BE RELOCATED
G	GROUND	RU	RACK UNIT
GFE	GOVERNMENT FURNISHED EQUIPMENT	SPD	SURGE PROTECTIVE DEVICE
		SPEC	SPECIFICATIONS
		ST	SHUNT TRIP
		SWBD	SWITCHBOARD
		TEL	TELEPHONE
		TVSS	TRANSIENT VOLTAGE SURGE SUPPRESSION
		TYP	TYPICAL
		UG	UNDERGROUND
		UNO	UNLESS NOTED OTHERWISE
		V	VOLT
		VA	VOLT AMPERE
		W	WATT
		WP	WEATHERPROOF
		UNO	UNLESS NOTED OTHERWISE
		UP	UNDERGROUND PRIMARY
		US	UNDERGROUND SECONDARY
		XFMR	TRANSFORMER
		#	NUMBER

SWITCH LEGEND	
\$3	WALL SWITCH 3 WAY SPDT 42" AFF TO CENTER UNO 20A 120/277V.

FIRE ALARM LEGEND	
ANN	REMOTE ANNUNCIATOR, FLUSH MOUNTED LOCATION MUST BE COORDINATED WITH LOCAL AHJ & ARCHITECTURAL ELEVATIONS.
FACP	FIRE ALARM CONTROL PANEL.
F	PULL STATION, DOUBLE ACTION TYPE. MOUNT AT 48" A.F.F. (OR AS REQUIRED TO MEET ADA HANDLE ACCESS REQUIREMENTS) "WG" DESIGNATES PROTECTIVE COVER.
F	FIRE ALARM AUDIO/VISUAL DEVICE MOUNTED 80" A.F.F. OR 6" BELOW CEILING UNO. "WG" DESIGNATES PROTECTIVE COVER. "WP" INDICATES DEVICE TO BE SUITABLE FOR "DAMP LOCATION" INSTALLATION.
L	FIRE ALARM VISUAL NOTIFICATION DEVICE MOUNTED 80" A.F.F. OR 6" BELOW CEILING UNO. "WG" DESIGNATES PROTECTIVE COVER.
H	FIRE ALARM 135° RATE-OF-RISE HEAT DETECTOR - CEILING/WALL MOUNTED. AS SHOWN ON DRAWINGS.
HF	FIRE ALARM FIXED TEMPERATURE HEAT DETECTOR. AS SHOWN ON DRAWINGS.
D	FIRE ALARM DUCT SMOKE DETECTOR. PROVIDE WITH REMOTE ALARM INDICATOR AND RELAY AS REQUIRED FOR UNIT SHUTDOWN "S" INDICATES "SUPPLY", "R" INDICATES "RETURN".
KB	FIRE ALARM SYSTEM KNOX BOX (COORDINATE WITH LOCAL AHJ) WITH 3/4"C TO FIRE ALARM SYSTEM CONTROL PANEL.
DOC	FIRE ALARM DOCUMENT BOX.

RECEPTACLE LEGEND	
	DUPLEX RECEPTACLE WALL MOUNTED 18" A.F.F. TO CENTER UNO.
	DUPLEX RECEPTACLE CEILING MOUNTED. SEE DETAIL 6/E2.01
	DUPLEX RECEPTACLE WALL MOUNTED 6" ACT TO CENTER OR 48" A.F.F. UNO.
	QUADRAPLEX RECEPTACLE WALL MOUNTED 18" A.F.F. TO CENTER UNO.
	DUPLEX GROUND FAULT CIRCUIT INTERRUPTER (5mA) RECEPTACLE WALL MOUNTED 18" A.F.F. TO CENTER UNO. "WP" INDICATES WEATHERPROOF "IN-USE" EXTRA DUTY METAL COVER. DEVICE "WEATHER-RESISTANT" RATED.
	DUPLEX GROUND FAULT CIRCUIT INTERRUPTER (5mA) RECEPTACLE WALL MOUNTED 18" A.F.F. TO CENTER UNO.
	DUPLEX GROUND FAULT CIRCUIT INTERRUPTER (5mA) RECEPTACLE WALL MOUNTED 6" ACT OR 48" A.F.F. TO CENTER UNO.
	QUADRAPLEX RECEPTACLE WALL MOUNTED 24" A.F.F. TO CENTER UNO. GROUND FAULT CIRCUIT INTERRUPTER (5mA)

MECHANICAL GENERAL NOTES/SPECIFICATIONS	
1. ALL MECHANICAL EQUIPMENT AND INSTALLATIONS SHALL CONFORM WITH THE REQUIREMENTS OF THE APPLICABLE INTERNATIONAL MECHANICAL CODE, INTERNATIONAL BUILDING CODE, THE STATE ENERGY CODE, NFPA 90A, 101, AND ALL APPLICABLE CODES AND LOCAL ORDINANCES.	
2. PRIOR TO PURCHASING ANY MATERIALS OR STARTING ANY WORK, CONTRACTOR SHALL FIELD VERIFY AND COORDINATE ALL CONDITIONS, DUCTWORK SIZES AND LOCATIONS, EQUIPMENT, ETC. SHOWN ON THE DRAWINGS OR AFFECTING THIS WORK AND SHALL REPORT ANY DEVIATIONS TO THE ARCHITECT. WHEN SUBMITTING A BID, THIS CONTRACTOR VERIFIES THAT EXISTING CONDITIONS HAVE BEEN VERIFIED.	
3. SHOP DRAWINGS SHALL BE SUBMITTED TO AND APPROVED BY THE ARCHITECT PRIOR TO ORDERING, PURCHASING, OR FABRICATING ANY MECHANICAL EQUIPMENT. EQUIPMENT SHALL BE AS SCHEDULED PER MODEL NUMBER GIVEN OR AN APPROVED EQUAL. SHOP DRAWINGS SHALL INCLUDE: ALL NEW EQUIPMENT SCHEDULED OR SPECIFIED ON THE DRAWINGS. SHOP DRAWINGS SHALL HAVE THE EQUIPMENT LABELED TO MATCH THE UNIT DESIGNATION SHOWN ON THE DRAWINGS. PROVIDE ALL INFORMATION INDICATED IN THE SCHEDULES OR ON THE DRAWINGS. SUBMIT ALL EQUIPMENT AT THE SAME TIME IN ELECTRONIC FORMAT OR OTHERWISE PAY THE HOURLY ADD-SERVICE FEE TO HAVE THE ENGINEER SCAN THEM.	
4. CONTRACTOR SHALL COORDINATE ELECTRICAL CHARACTERISTICS AND REQUIREMENTS OF ALL MECHANICAL EQUIPMENT WITH ELECTRICAL DRAWINGS PRIOR TO ORDERING EQUIPMENT OR SUBMITTING SHOP DRAWINGS, AND SHALL FURNISH EQUIPMENT WIRED FOR THE VOLTAGES SHOWN THEREIN.	
5. ALL MECHANICAL EQUIPMENT REQUIRING ELECTRICAL POWER SHALL BE INSTALLED WITH DISCONNECT SWITCHES AT EACH PIECE OF EQUIPMENT. COORDINATE SWITCH TYPE (FUSED OR NON-FUSED) WITH EQUIPMENT CHARACTERISTICS, MANUFACTURER'S RECOMMENDATIONS AND ELECTRICAL DRAWINGS.	
6. ALL REQUIRED CONTROL WIRING NOT SHOWN ON THE ELECTRICAL DRAWINGS SHALL BE INCLUDED AS PART OF THE MECHANICAL WORK.	
7. UNLESS NOTED OTHERWISE, DISCONNECTS, SMOKE DETECTORS, TRANSFORMERS, CONTROLS AND CONTROL WIRING REQUIRED FOR ALL MECHANICAL SYSTEMS SHALL BE FURNISHED AND INSTALLED BY THE MECHANICAL CONTRACTOR.	
8. ALL MECHANICAL EQUIPMENT SHALL BE INSTALLED ACCORDING TO MANUFACTURER'S RECOMMENDATIONS.	
9. ALL MECHANICAL EQUIPMENT AND SYSTEMS SHALL BE GUARANTEED FOR A PERIOD EQUAL TO MFR'S STANDARD WARRANTIES AFTER ACCEPTANCE BY OWNER.	
10. ALL PERMITS SHALL BE OBTAINED AND PAID FOR BY THE MECHANICAL CONTRACTOR.	
11. ALL WORK SHALL BE COORDINATED AND PERFORMED WITH PRIOR APPROVAL FROM THE OWNER TO SUIT THEIR OPERATING CONDITIONS.	
12. CONTRACTOR SHALL COORDINATE THE INSTALLATION OF ALL MECHANICAL EQUIPMENT, CONTROLS, APPURTENANCES, ETC. TO FIT WITHIN THE SPACE ALLOWED BY THE ARCHITECTURAL AND STRUCTURAL CONDITIONS. CUTTING OR OTHERWISE ALTERING ANY STRUCTURAL MEMBERS SHALL NOT BE PERMITTED WITHOUT WRITTEN PERMISSION FROM THE ENGINEER/ARCHITECT.	
13. THERMOSTATS SHALL NOT HAVE MERCURY. MOUNT THERMOSTATS 48" AFF UNLESS NOTED OTHERWISE.	
14. ALL EQUIPMENT SHALL BE LABELED WITH BAKELITE PLASTIC ENGRAVED NAMEPLATES WITH MINIMUM 1" LETTERING.	
15. THESE DRAWINGS ARE DIAGRAMMATIC IN NATURE AND DO NOT NECESSARILY REFLECT ALL EXISTING CONDITIONS OR ACTUAL ROUTING. CONTRACTOR SHALL HAVE LATITUDE TO ADJUST ROUTING AS REQUIRED WHILE REMAINING CODE COMPLIANT. ENGINEER SHALL REVIEW ANY MAJOR DEVIATIONS FROM PLAN IF REQUIRED BY AHJ.	
16. CONTROLS:	
A. EF-1: IN NORMAL VENTILATION MODE, FAN SHALL RUN SUBJECT TO SPACE THERMOSTAT (SEE PLANS). DURING PURGE MODE, UNIT HEATER IN SPACE SHALL STOP (IF RUNNING). ONCE REMOTE SWITCH IS FLIPPED "OFF", FAN SHALL REVERT BACK TO THERMOSTATIC CONTROL. COORDINATE ALL INTERLOCKS & SEQUENCES WITH ELECTRICAL TRADE. VENTILATION FANS SHALL OPERATE SUBJECT TO THEIR RESPECTIVE SPACE-MOUNTED T-STATS.	



LUMINAIRE SCHEDULE							
FIXTURE MARK	NO	LAMPS WATTS	TYPE	VOLTAGE	MAKE	MOUNTING TYPE	DESCRIPTION
A	1	82	LED	UNV	DAY BRITE	PENDANT	RH3G1020L8CST-UNS-DIM - RH3SM16CLTC
B	1	25	LED	UNV	STONCO	PENDANT	LPGC-A02-840-55Q-PEN-UNV
EM	2	0.6	LED	120	BEGHELLI	WALL	EPE-AT
FL	1	60	LED	120	STONCO	WALL	SF60-SCT-U-G2-10-BZ
X	1	10	LED	120	CHLORIDE	UNV	VE SERIES

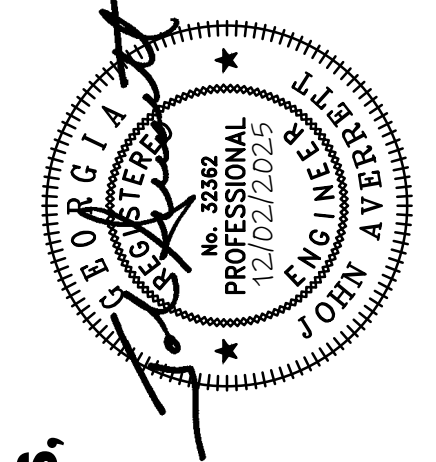
LUMINAIRE SCHEDULE NOTES:	
1. EQUIVALENT PRODUCTS WILL BE REVIEWED PROVIDED THE REQUIREMENTS FOR PRIOR APPROVAL OUTLINED IN THE SPECIFICATIONS ARE MET.	
2. ELECTRICAL CONTRACTOR IS RESPONSIBLE FOR COORDINATING ALL FIXTURE MOUNTING PROVISIONS WITH THE ASSOCIATED CEILING TYPE(S) BEFORE ORDERING FIXTURES	
3. IN ORDER TO ENSURE PROPER COORDINATION AND LONG TERM SUPPORT FOR THE OWNER, ALL LIGHTING FIXTURES WILL BE PURCHASED THROUGH A MANUFACTURER'S REPRESENTATIVE AND DISTRIBUTORS LOCATED WITHIN ONE HUNDRED AND FIFTY (150)MILES OF THE PROJECT SITE. SUBMITTALS RECEIVED THAT DO NOT COMPLY WITH THIS REQUIREMENT WILL BE REJECTED WITHOUT REVIEW. THE CONTRACTOR WILL BE RESPONSIBLE FOR ANY DELAYS CAUSED BY	
4. ALL EMERGENCY AND EXIT LIGHTS WILL BE CONNECTED TO UNSWITCHED HOT LEG SO THAT BATTERY OPERATES UPON POWER FAILURE.	
5. PRODUCTS PROPOSED MUST MEET OR EXCEED QUALITY, FUNCTIONALITY, SHAPE, LUMEN OUTPUT, ETC OF PRODUCT LISTED BY CATALOG NUMBER.	
6. SOME LISTED CATALOG NUMBERS MAY INCLUDE MODIFICATIONS OF A MANUFACTURER'S STANDARD PRODUCT.	
7. ANY AND ALL DIMENSIONAL DIFFERENCES MUST BE COORDINATED PRIOR TO RELEASE OF ORDER.	

PANELBOARD LA SCHEDULE											
LOCATION SHOP		200A MLO									
VOLTAGE 120/240		SYSTEM: 1Ø 3 WIRE									
TRIM SURFACE		INTERRUPTING RATING: 10K AIC									
CKT	LOAD	BREAKER	PHASE (KW)	PHASE (KW)	BREAKER	LOAD	CKT				
#	DESCRIPTION	P	TRIP	A	B	A	B	TRIP	P	DESCRIPTION	#
1	RECEPTACLES	1	20	0.50		1.20		20	1	LIGHTING	2
3	RECEPTACLES	1	20		0.50		1.20	20	1	EXT. LIGHTS	4
5	RECEPTACLES	1	20	0.50		0.60		20	1	FLOOD LIGHTS	6
7	RECEPTACLES	1	20		0.50		0.50	20	1	MTR LOUVER	8
9	RECEPTACLES	1	20	0.50		1.00		20	1	CAMERA RECEPTACLES	10
11	RECEPTACLES	1	20		0.50		1.00	20	1	CAMERA RECEPTACLES	12
13	RECEPTACLES	1	20	0.50		0.80		20	1	RECEPTACLES	14
15	RECEPTACLES	1	20		0.50					BUSSED SPACE	16
17	RECEPTACLES	1	20	0.50						BUSSED SPACE	18
19	RECEPTACLES	1	20		0.50					BUSSED SPACE	20
21	RECEPTACLES	1	20	0.50						BUSSED SPACE	22
23	RECEPTACLES	1	20		0.50		1.00			EXFI FAN	24
25	ELECTRIC HEATER	1	20	0.30		1.00		20	1		26
27	SPARE	1	20				1.00				28
29	SPARE	1	20			1.00		20	1	BAF	30

PANELBOARD NOTES	
1. PANELBOARDS SHALL BE INSTALLED IN SUCH A MANNER TO MAINTAIN ALL CLEARANCES IN ACCORDANCE WITH THE NEC.	
2. ALL PANELBOARDS SHALL BE UL LISTED AND INSTALLED IN ACCORDANCE WITH THAT LISTING.	
3. PANELBOARDS SHALL BE FURNISHED COMPLETE WITH THE PROPERLY SIZED CAN, INTERNAL HARDWARE, COMPONENTS, SUPPORTING STRUCTURES, ETC., FOR A COMPLETE INSTALLATION.	
4. FURNISH EACH PANELBOARD WITH A GROUND BAR BONDED TO THE PANEL ENCLOSURE.	
5. EACH PANELBOARD SHALL HAVE A NAMEPLATE AS SHOWN IN DETAIL. ENGINEER WILL NOT ACCEPT JOB UNTIL THESE NAMEPLATES ARE PROVIDED.	
6. ALL PANELBOARDS SHALL BE CLEARLY MARKED TO COMPLY WITH NEC 110.16 & NEC110.24 REGARDING POTENTIAL HAZARDS OF ARC FLASH.	
7. PROVIDE TYPED CIRCUIT DIRECTORY THAT INDICATES WHAT EACH CIRCUIT IS SERVING. LIGHTING AND RECEPTACLE CIRCUITS WILL INCLUDE THE ROOM NUMBERS THAT CIRCUIT IS SERVING.	
8. PROVIDE THE PROPERLY SIZED CONDUCTOR TERMINATION POINTS OR LUGS (MULTIPLE LUGS WHEN PARALLEL FEEDERS ARE USED) FOR THE NUMBER AND SIZE CIRCUITS INDICATED.	
9. THE TERMINATION POINT OF THE FEEDER SERVING EACH ASSEMBLY SHALL BE AT THE NEAREST POINT OF FEEDER ENTRY TO MINIMIZE CONDUCTOR FILL IN THE CAN. COORDINATE TOP/BOTTOM FED PANELBOARD PROVISIONS WITH EACH FEED INSTALLATION.	

ISSUE	DATE
CONSTRUCTION DOCUMENTS	12/02/2025
DESIGNED BY:	CCJ/DZ
DRAWN BY:	IMP/JRA/JDZ
CHECKED BY:	JEK

HANDLEY PARK PUBLIC  
WORKS BUILDING  
980 SENIORA ROAD TYRONE, GEORGIA 30290



ELECTRICAL LEGENDS,  
SCHEDULES, & NOTES

GMC Project VATL250020

GEO.01

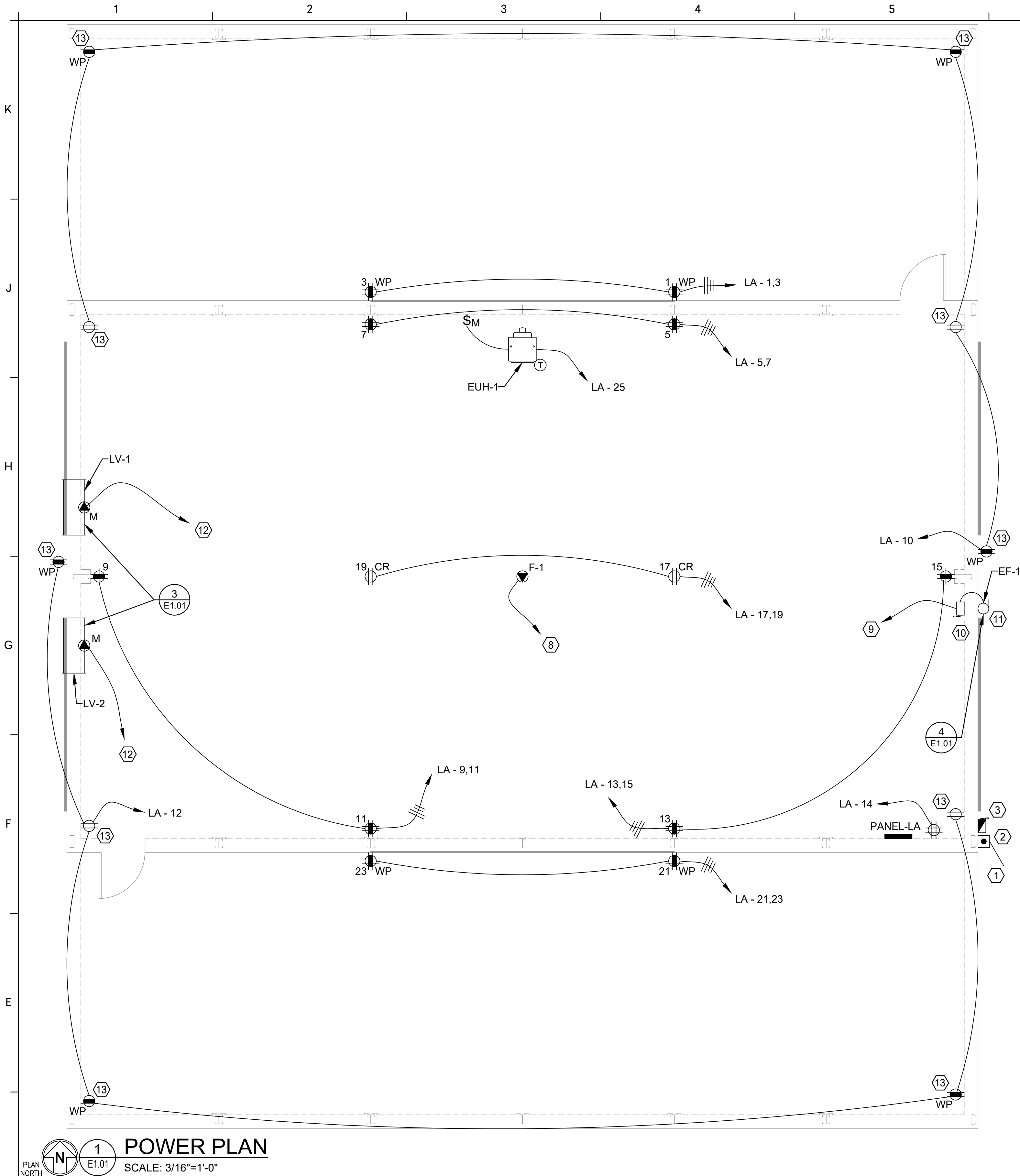
2660 East Chase Lane, Suite 200  
Montgomery, AL 36117

T 334.271.3200  
GMCNETWORK.COM

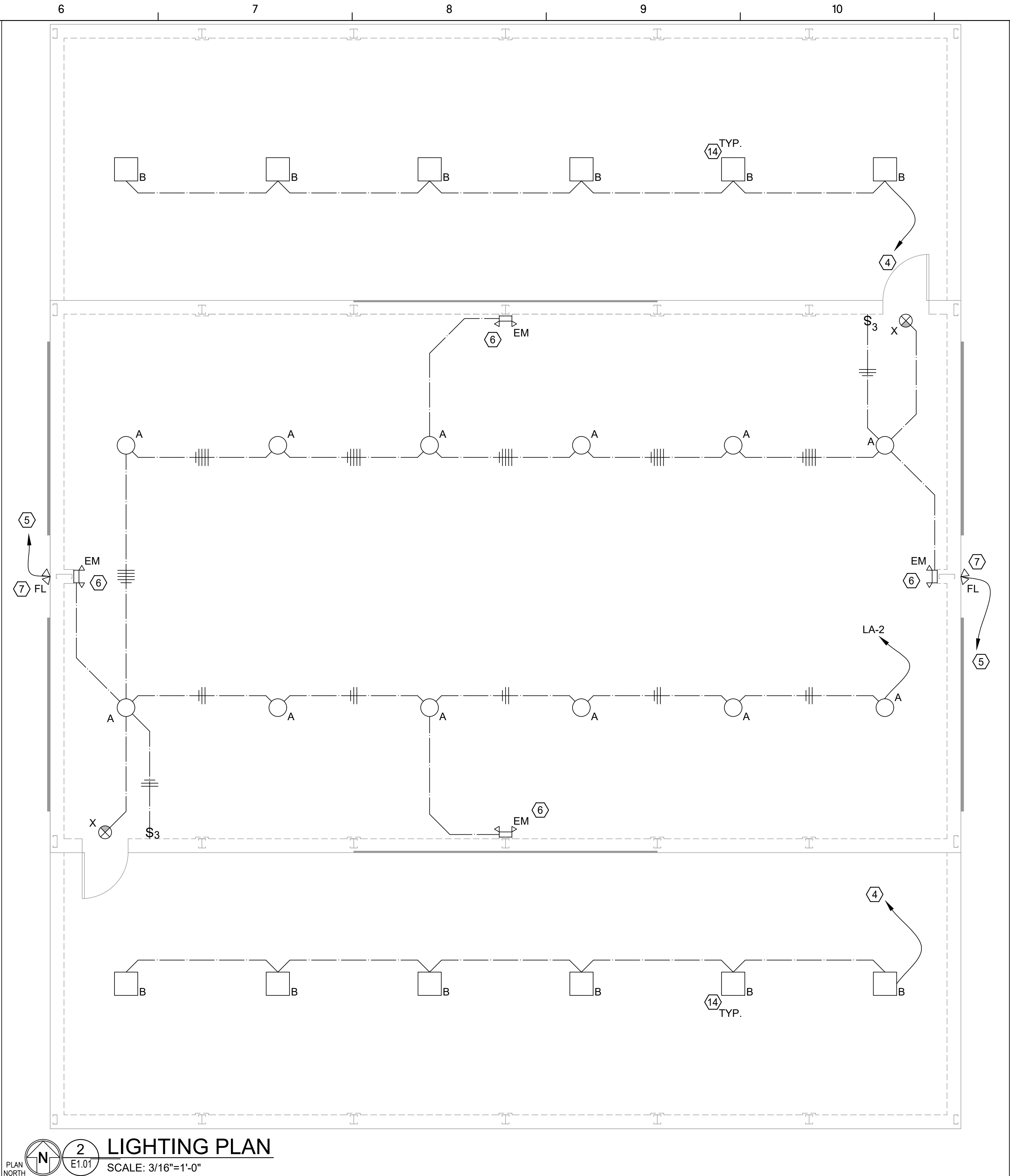
GMC



VATL250020

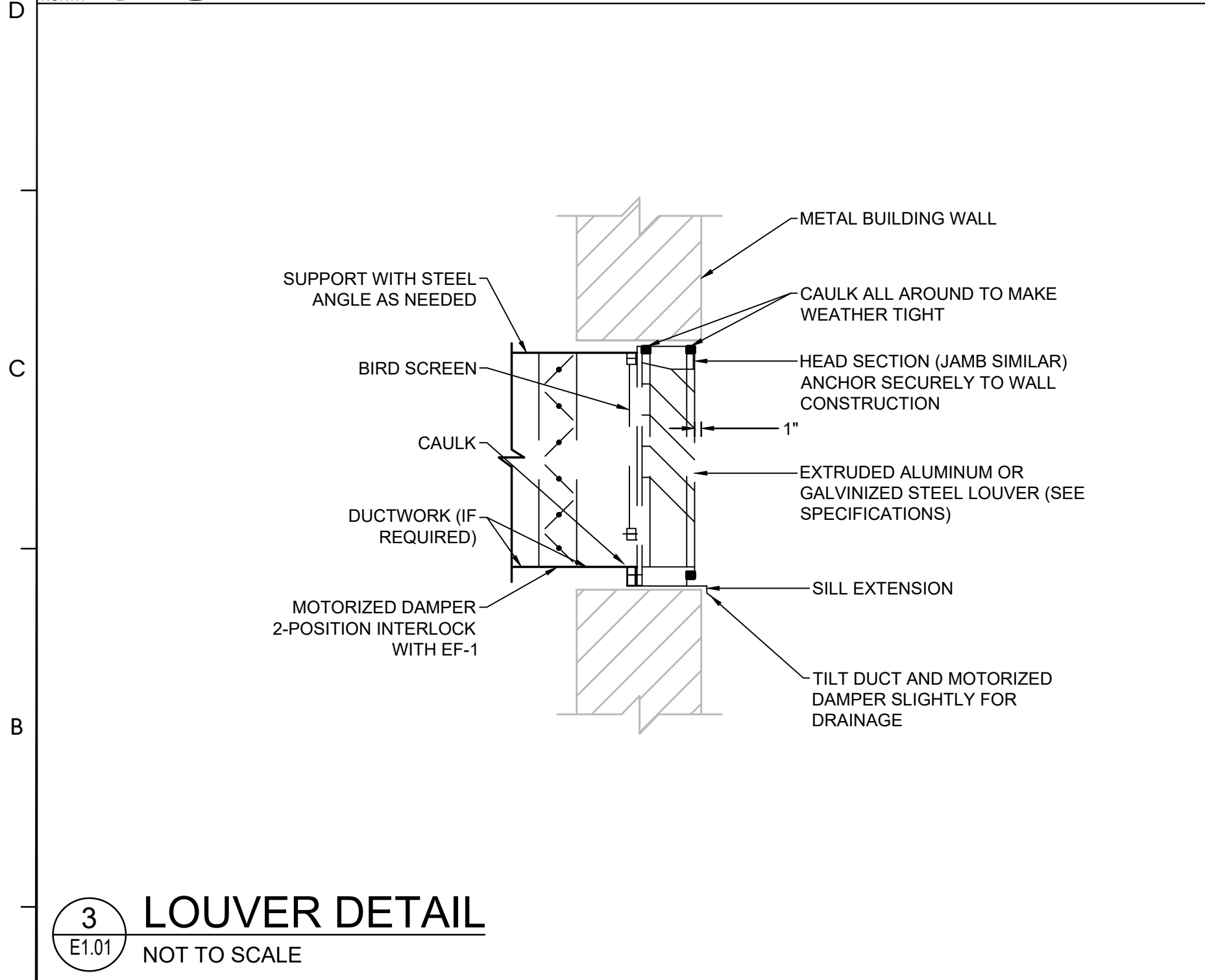


**1 POWER PLAN**  
SCALE: 3/16"=1'-0"

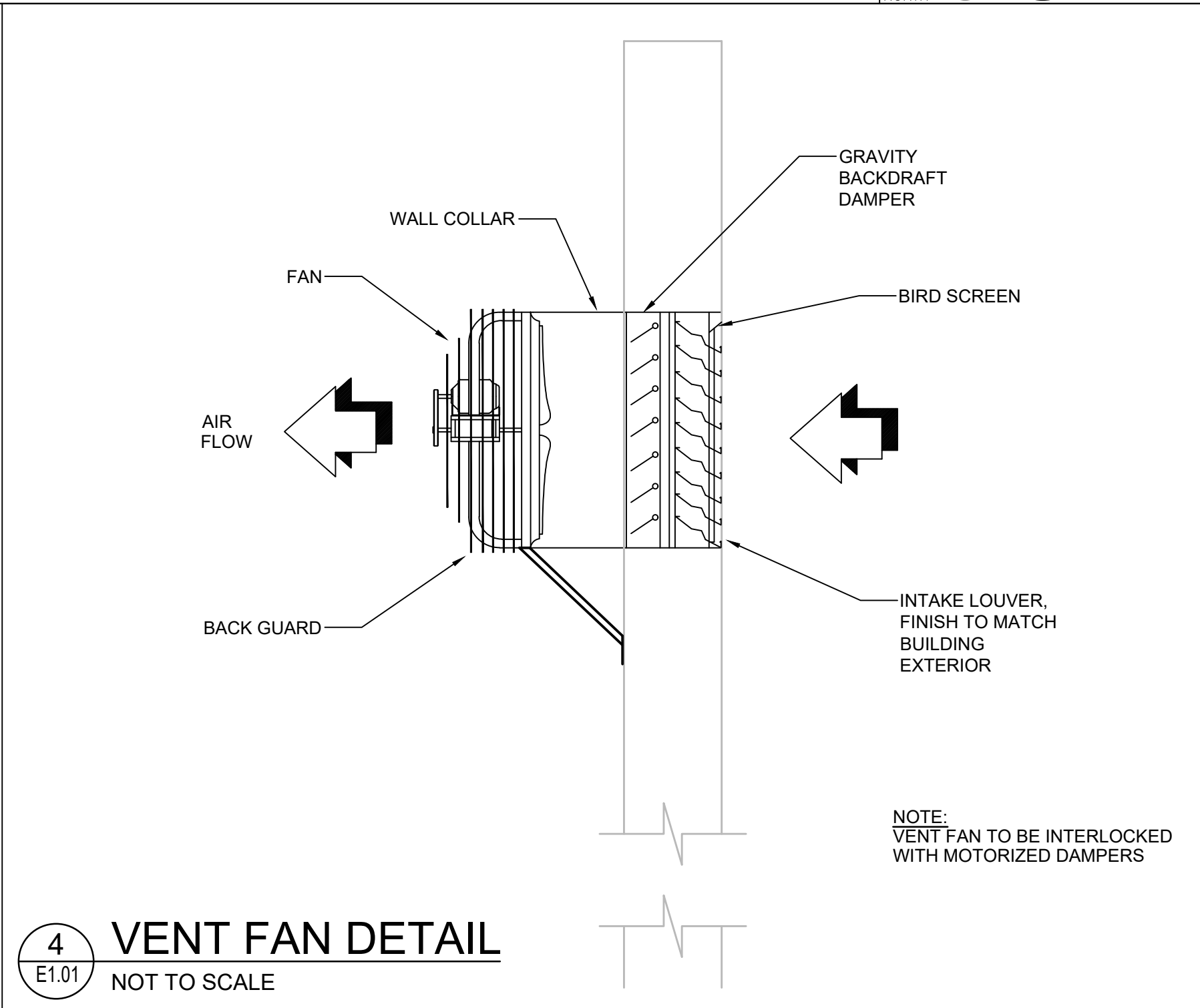


**2 LIGHTING PLAN**  
SCALE: 3/16"=1'-0"

- KEYED NOTES (#)**
- 120/240V, SINGLE PHASE, 3W OVERHEAD SERVICE BY UTILITY COMPANY.
  - UTILITY COMPANY METER FURNISHED BY SAME INSTALLED BY ELECTRICAL CONTRACTOR.
  - SERVICE ENTRANCE DISCONNECT SWITCH
  - LA-4 THRU TIME CLOCK
  - LA-6 THRU PHOTO-CELL
  - MOUNT AT 10'-0" A.F.F.
  - MOUNT AT 14'-0" A.F.F.
  - LA-20/2, 2#12 & 1#12(G) - 1/2"Ø ROUTE THRU CONTROL SYSTEM FURNISHED W/ FAN, LOCATE AS DIRECTED BY OWNER
  - LA-20/2 (2#12 & 1#12(G) - 1/2"Ø)
  - 30A, 2P, N.F. NEMA 1 DISCONNECT SWITCH LOCATED AT HEIGHT AS DIRECTED.
  - EXHAUST FAN (EF-1) VERIFY EXACT MOUNTING HEIGHT & LOCATION WITH MECHANICAL CONTRACTOR.
  - LA-8 MAKE CONNECTION AS REQUIRED INTERCONNECTION WITH EF-1 BY MECHANICAL CONTRACTOR.
  - RECEPTACLE MOUNTED HIGH FOR OWNER PROVIDED CAMERA. COORDINATE MOUNTING HEIGHT WITH OWNER.
  - FIELD COORDINATE EXACT LOCATION WITH CANOPY STRUCTURE. MOUNT BOTTOM OF FIXTURE AT 12'-0" A.F.F.



**3 LOUVER DETAIL**  
NOT TO SCALE



**4 VENT FAN DETAIL**  
NOT TO SCALE

FAN SCHEDULE														
PLAN CODE	SERVICE LOCATION	MOUNTING LOCATION	MANUFACTURER	MODEL NO.	AIRFLOW	EXT. S.P. (IN. W.G.)	FRPM	MAX. SOUND (SONES)	WEIGHT (APPROX.)	ELECTRICAL			INTERLOCK WITH:	ACCESSORIES
										MOTOR	FLA	V/PH./HZ		
EF-1	MAIN ROOM	WALL	DAYTON	484X43	2400 CFM	0.125	1075 RPM	11.3	25 LBS	316 W	2.75 A	240/1/60	WALL SWITCH	1, 2, 3
F-1	MAIN ROOM	CEILING	BIG ASS FAN	E10	-	-	124 RPM	<35	76.8 LBS	-	10 A	240/1/60	WALL SWITCH	-
OPTIONS/ACCESSORIES: 1. WALL CAP WITH GRAVITY BACKDRAFT DAMPER. 2. WALL-MOUNTING ACCESSORIES. 3. MOUNT/LOCATE AS DIRECTED BY OWNER.														

LOUVER SCHEDULE								
PLAN CODE	MFR	MODEL NO.	SERVICE	ASSOCIATED SYSTEM	AIRFLOW	SIZE	PRESSURE DROP (IN. W.G.)	REMARKS
LV-1	RUSKIN	ELF6375DX	INTAKE WITH DAMPER	EF-1	2400 CFM	18" x 48"	0.14	1, 2, 3, 4, 5, 6, 7, 8, 9
LV-2	RUSKIN	ELF6375DX	INTAKE WITH DAMPER	EF-1	2400 CFM	18" x 48"	0.14	1, 2, 3, 4, 5, 6, 7, 8, 9

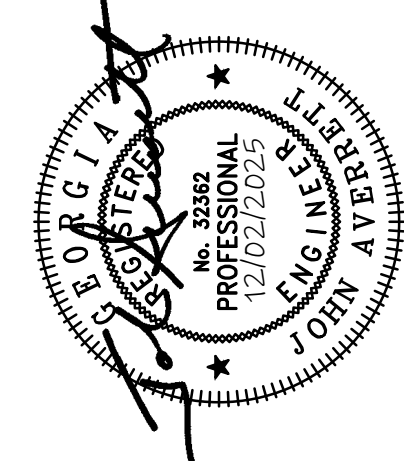
NOTES:  
1. LOUVERS SHALL BE LICENSED TO BEAR THE AMCA CERTIFIED RATINGS PROGRAM SEAL FOR AIR PERFORMANCE, WIND-DRIVEN RAIN AND WATER PENETRATION IN ACCORDANCE WITH AMCA PUBLICATION 511.  
2. FLAT EXPANDED ALUMINUM, BIRDSCREEN, INTERNAL, MILL FINISH.  
3. PROVIDE FREE AREA CORRELATING TO 400 FPM VELOCITY.  
4. PROVIDE ALL WALL-MOUNTING ACCESSORIES.  
5. COLOR TO BE DETERMINED BY OWNER.  
6. MOUNT AS LOW AS POSSIBLE OR AS DIRECTED BY OWNER.  
7. IF SCHEDULED LOUVER DIMENSIONS ARE NOT AVAILABLE, SUBMIT NEXT INCREMENTAL INCH SIZE UP.  
8. APPROVED EQUALS: GREENHECK  
9. LOUVERS SHALL BE EQUIPPED WITH A 120V ACTUATOR THAT IS CONNECTED TO THE ASSOCIATED EF-1. 120V ACTUATOR WILL OPEN LOUVER WHEN EF-1 IS ACTIVATED.

UNIT HEATER SCHEDULE									
PLAN CODE	SERVICE LOCATION	MFR	MODEL NO.	AIRFLOW	HEATING CAPACITY	ELECTRICAL			NOTES
						V/PH./HZ	MCA	MOCP	
EUH-1	SUSPENDED FROM CEILING	MODINE	HD60	990 CFM	60000 BTU/HR	120/1/60	2.5 A	15 A	1, 2, 3, 4, 5

NOTES:  
1. PROVIDE INTEGRAL THERMOSTAT.  
2. HORIZONTAL, CORROSION-RESISTANT ELECTRIC UNIT HEATER, TEM MOTOR.  
3. PROVIDE WALL MOUNTING KIT.  
4. PROVIDE INTEGRAL DISCONNECT SWITCH.  
5. APPROVED EQUALS: BERKO, DAYTON, QMARK/MARLEY

ISSUE DATE	
CONSTRUCTION DOCUMENTS	12/02/2025
DESIGNED BY:	CCJ/DZ
DRAWN BY:	JMP/JRA/JDZ
CHECKED BY:	JE

HANDLEY PARK PUBLIC  
WORKS BUILDING  
950 SENIOR ROAD TYRONE, GEORGIA 30290



POWER PLAN &  
LIGHTING PLAN

GMC Project VATL250020

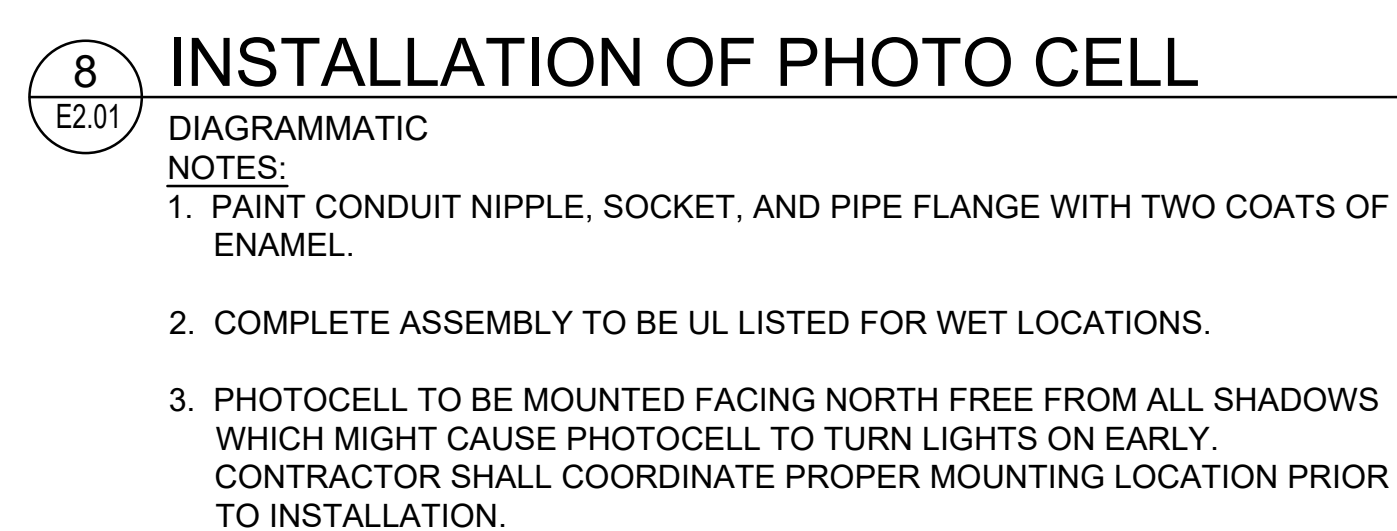
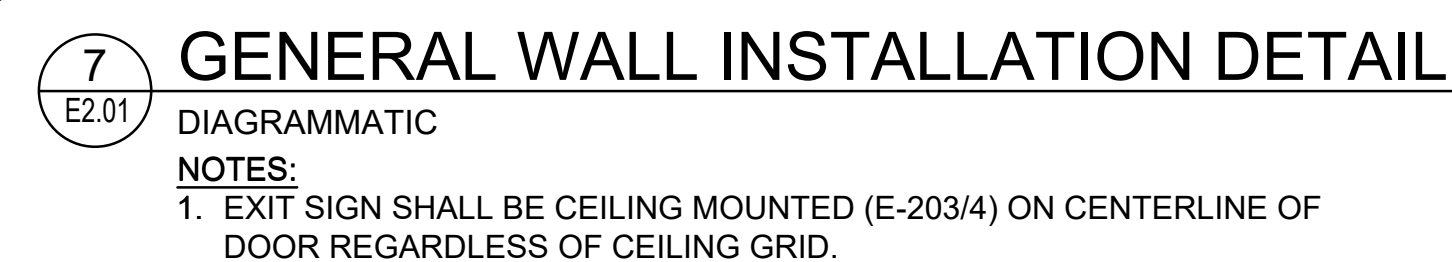
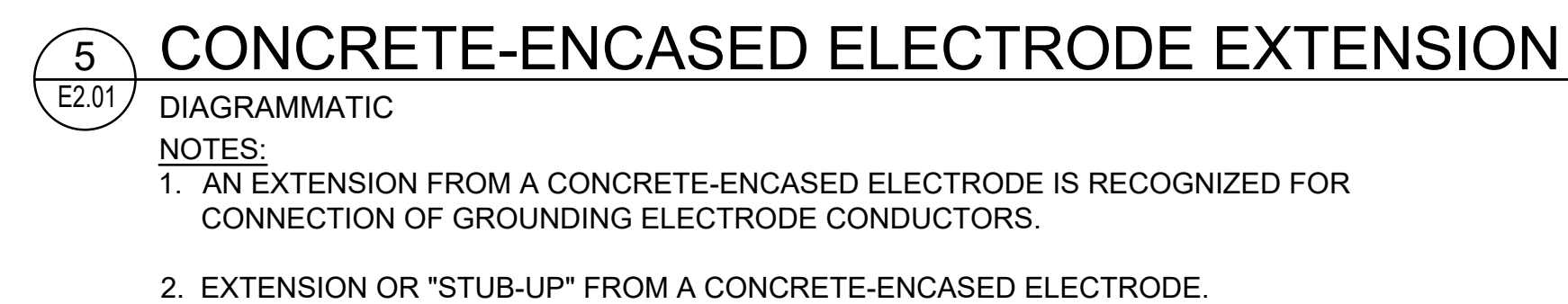
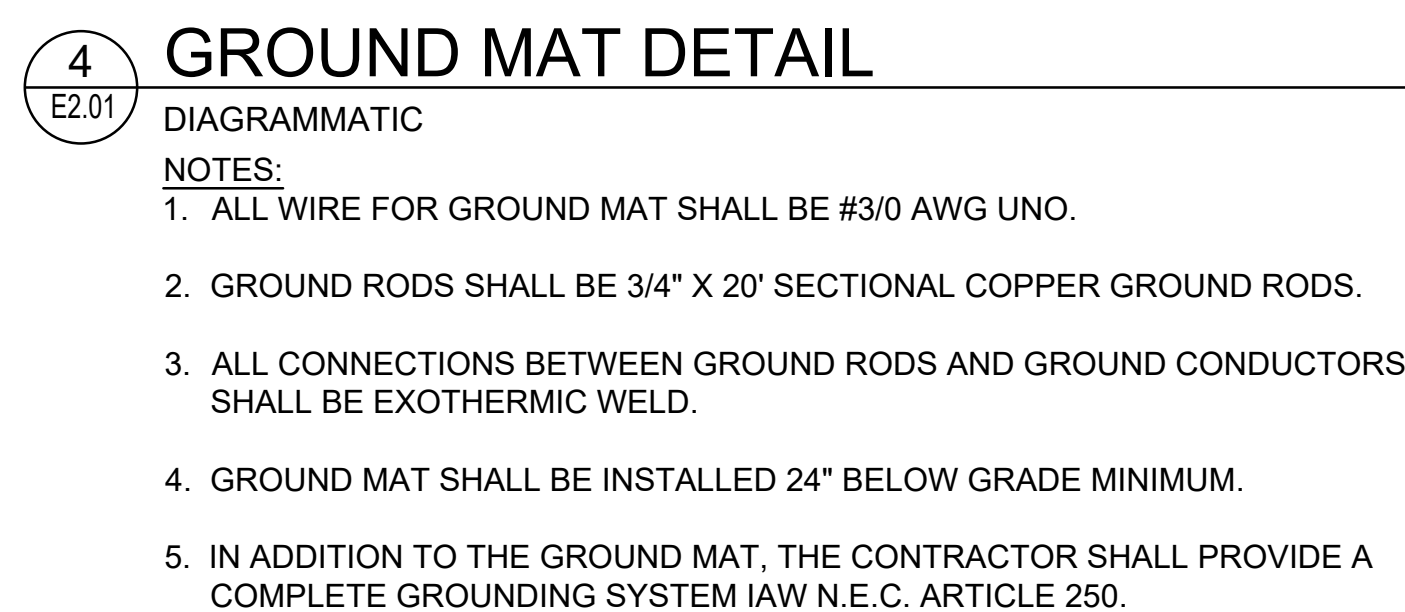
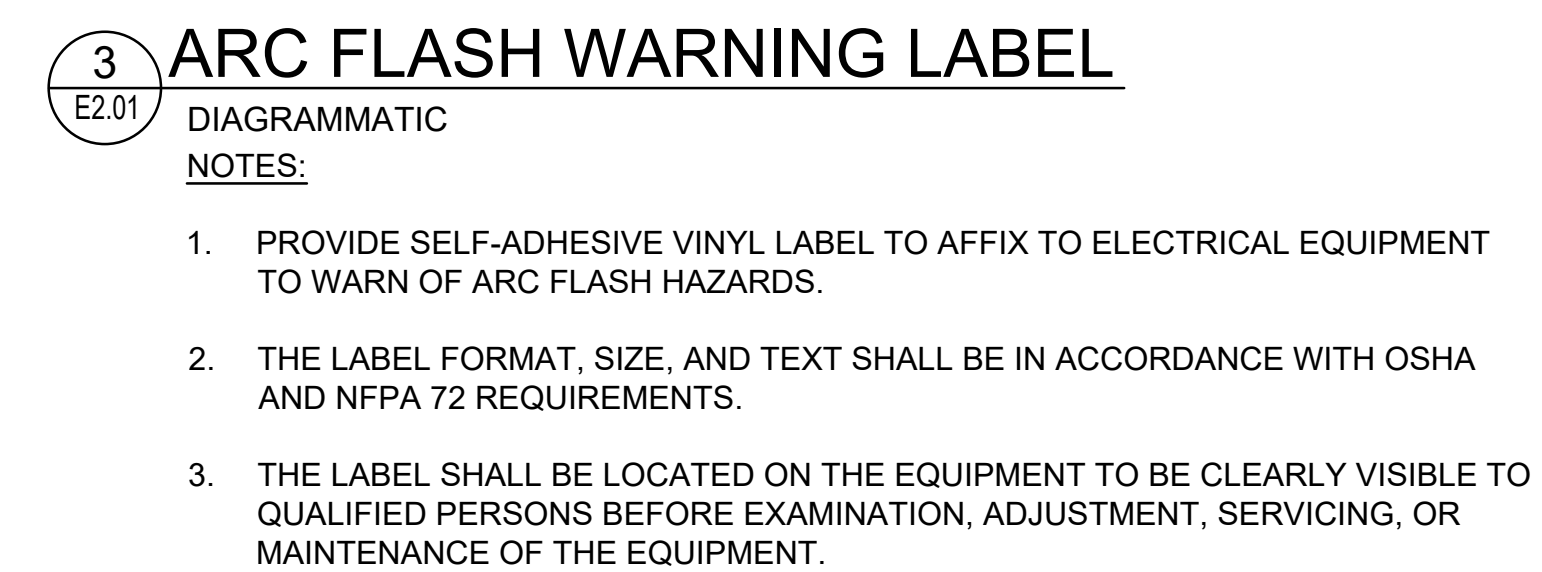
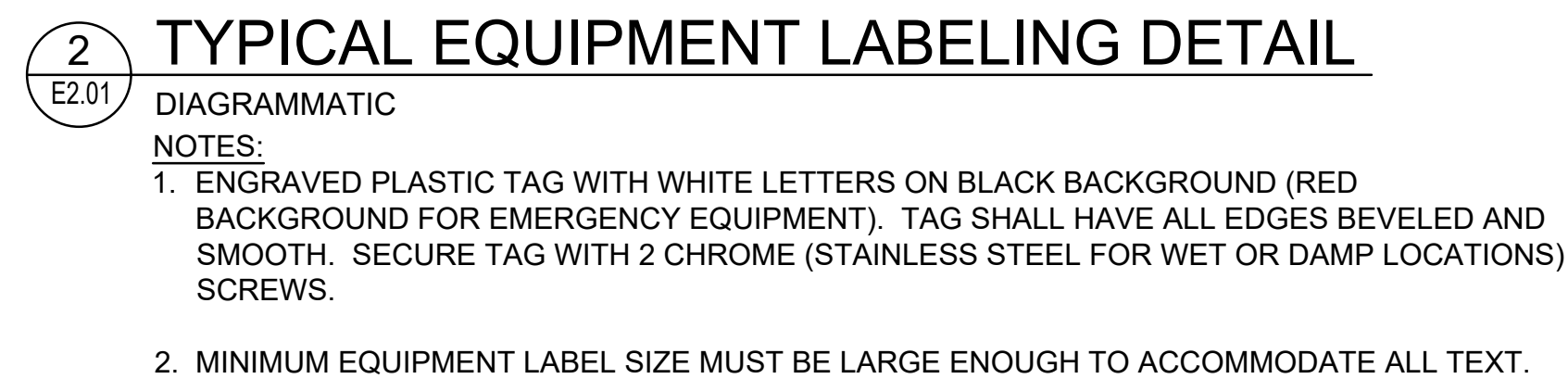
E1.01

GMC

2660 East Chase Lane, Suite 200  
Montgomery, AL 36117  
T 334.271.3200  
GMCNETWORK.COM

VATL250020





ISSUE	DATE
CONSTRUCTION DOCUMENTS	12/02/2025
DESIGNED BY:	CC/JDZ
DRAWN BY:	JMP/JRA/JDZ

