



3500 Parkway Lane, Suite 500
Peachtree Corners, Georgia 30092

T: 678.336.7740 | F: 678.336.7744
www.pondco.com

October 16, 2023

Mr. Scott Langford, PE
Town Engineer/Public Works Director
Town of Tyrone
950 Senoia Road, Suite A
Tyrone, GA 30290

**Re: Sewer Force Main Relocation Plans- Palmetto Road at Arrowood Road
Forsyth County, Georgia**

Dear Mr. Langford,

Pond thanks you for the opportunity to assist you with your project. Based on our conversations, we understand that the project will consist of the relocation of a 6" sanitary sewer force main at the intersection of Palmetto Road and Spencer Road in Forsyth County, Georgia. The sanitary sewer relocation will include the abandonment of approximately 830 LF of existing force main and the installation of segment approximately 650 LF long as shown in Exhibit A.

This proposal includes sanitary sewer force main design, as further described below. No other design (site layout, grading, erosion control, tree protection, lift station design, etc.) is included. It is assumed that all other required items will be provided by others. Further, this proposal assumes that all survey and SUE needed to complete this design will be an additional service. No survey is included in this proposal. Any new information acquired after this proposal is submitted may require a reevaluation and revision of the scope and fee proposal.

PROFESSIONAL SERVICES

I. TASK I - DESIGN DEVELOPMENT (60%)

- A. Pond will visit the project site to observe existing conditions.
- B. Pond will attend a project kick-off meeting or phone call/virtual meeting with the owner and design team to discuss the proposed project, expectations, schedule, and other requirements.
- C. Pond will review the provided survey and provide feedback if necessary. This proposal assumes that the completed survey (including all information necessary to design the sewer relocation) will be provided prior to the start of design.
- D. The sanitary sewer relocation plans will be provided in the following format:
 1. Cover Sheet
 2. Sewer Notes, Legend, and Abbreviations
 3. Existing Conditions
 4. Demolition Plan
 5. Sewer Utility Plan and Profiles

6. Sanitary Sewer Construction Details

- E. It is anticipated that intermediate plans will be provided to the client for review at approximately the 60% design level.

II. TASK II - CONSTRUCTION DOCUMENTS (100%)

- A. Pond will address comments from the 60% review cycle that fit within the scope of this proposal for finalization of the permit submittal set. This proposal assumes that no additional client/owner directed revisions or comments will be received after this submittal.
- B. With the final documents, Pond will coordinate permitting the proposed sanitary sewer force main with the Town.
- C. In support of obtaining permits, revisions to the plans will be made per the reviewer comments that fit within the scope as described in this proposal.
- D. This proposal assumes that Pond will attend up to two (2) coordination or review meetings under this task.
- E. A conformed set of construction plans will be provided to the client for bidding after all applicable comments have been addressed. These plans will be in electronic PDF format.
- F. Pond will prepare the bid form to assist the Town's bidding process.

III. TASK III – SUE ALLOWANCE

- G. Pond will assume a subsurface utility engineering (SUE) allowance to be set aside for QL-A (potholing) and/or QL-B (ground penetrating radar – GPR) services. These will be used as approved/authorized by the town.

EXCLUSIONS OF SERVICE

The following services are excluded from this proposal. However, these services can be added for an additional fee if requested. Exclusions:

- A. Field survey or utility location/verification.
- B. Written technical specifications (assumes county standard sewer specifications will be utilized).
- C. Sewer capacity modeling, downstream analysis, or pump station design/analysis.
- D. Stormwater management or BMP design.
- E. Permitting with any jurisdictions other than City of Tyrone (GDOT, railroad, FEMA, EPD, etc.).
- F. Retaining wall design.
- G. Cathodic protection studies or design.
- H. Environmental studies, remediation design, or geotechnical exploration.
- I. Bridge design, abutment design; or temporary shoring design.
- J. Cost estimating
- K. Formal value engineering services.
- L. Bid Assistance services beyond the preparation of the bid form.
- M. Construction Administration.

CONDITIONS OF SERVICE

- A. It is understood that the permitting process is beyond the control of Pond and that the governing jurisdiction(s) may or may not issue a permit for the proposed improvements, as currently conceived.
- B. It is also understood that Pond & Company has no control over the ROW / easement acquisition, funding, construction, operation, and / or maintenance of the proposed improvements that are required for the proposed system to function as designed. Pond will only provide easement exhibits—easement acquisition and/or any other paperwork will be by others.
- C. Pond will examine available published environmental data (National Wetland Inventory, FEMA Flood Maps, etc.), but field delineation/survey of possible State Waters / Wetlands / FEMA boundaries and cross-sectional survey is excluded, except as specifically included in the proposal.
- D. Services not specifically included in the proposal, or material changes requested after professional services have commenced, will be considered additional / out of scope services and will be approved via a contract change order prior to commencement of the additional work.

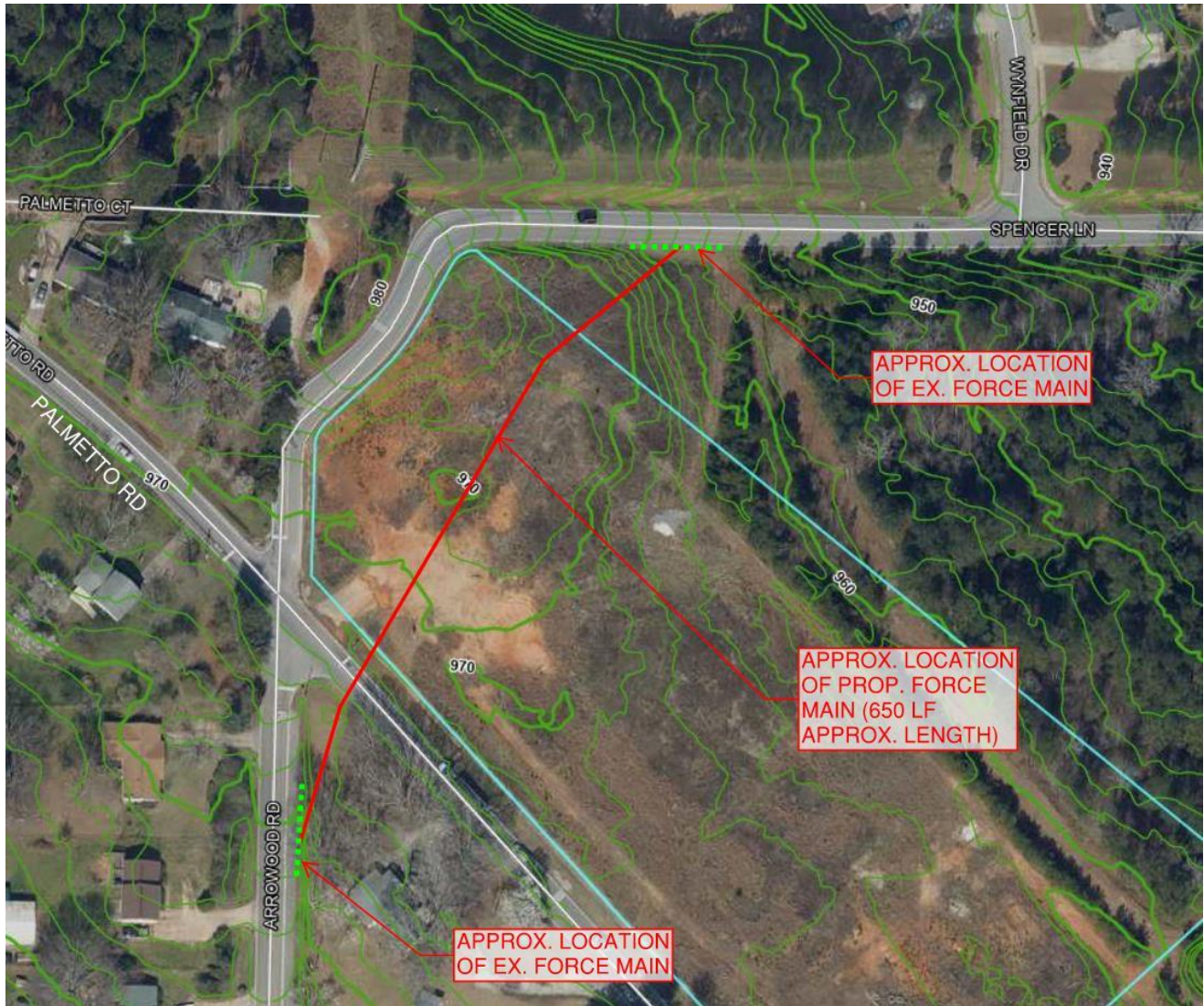
FEES AND TERMS OF PAYMENT

Pond & Company proposes to complete the professional services specifically stated above for the fees listed below:

TASK I - DESIGN DEVELOPMENT (60%)	\$ 8,267
TASK II - CONSTRUCTION DOCUMENTS (100%)	\$ 9,184
TASK III – SUE ALLOWANCE	\$ 15,000
TOTAL PROJECT FEES:	\$ 32,451

The fee was developed using the contracted unit rates, for a not to exceed total of \$32,451.00 to be billed as lump-sum. The fees are summarized in the attached Man-Hour Fee Estimate.

Exhibit A- Sewer Extension Exhibit



Project: Tyrone Force Main Relocation

Task	Hours					NTE Fee
	PIC	PM	Senior Eng	Mid-level Engineer	Junior Engineer	
	\$220	\$190	\$210	\$127	\$110	
Task I-Design Development (60%)						
Site Visit		3		3		\$951
Cover Sheet				1	2	\$347
Notes, Legend, and Abbreviations				1	1	\$237
Existing Conditions					2	\$220
Demolition Plan			1	2	2	\$684
Utility Plans			1	4	4	\$1,158
Sanitary Sewer Profiles			1	4	4	\$1,158
Construction Details				1	2	\$347
Coordination/Review Meetings		3		3		\$951
Technical Quality Review	2	4		2		\$1,454
PM		4				\$760
Subtotal	2	14	3	21	17	\$8,267
Task II-Construction Documents (100%)						
Cover Sheet					1	\$110
Notes, Legend, and Abbreviations					1	\$110
Existing Conditions					1	\$110
Demolition Plan				1	1	\$237
Utility Plans			1	2	2	\$684
Sanitary Sewer Profiles				2	2	\$474
Construction Details				1	1	\$237
Coordination/Review Meetings		2		2		\$634
Permitting		4	2	8	2	\$2,416
Technical Quality Review	4	4		6		\$2,402
PM		4				\$760
Bid form	1	2				\$600
Conformed set of plans		1			2	\$410
Subtotal	5	17	3	22	13	\$9,184
Task III-SUE Allowance						
Allowance for SUE Sub						\$15,000
Anticipated Hours and Fee:	7	31	6	43	30	\$32,451