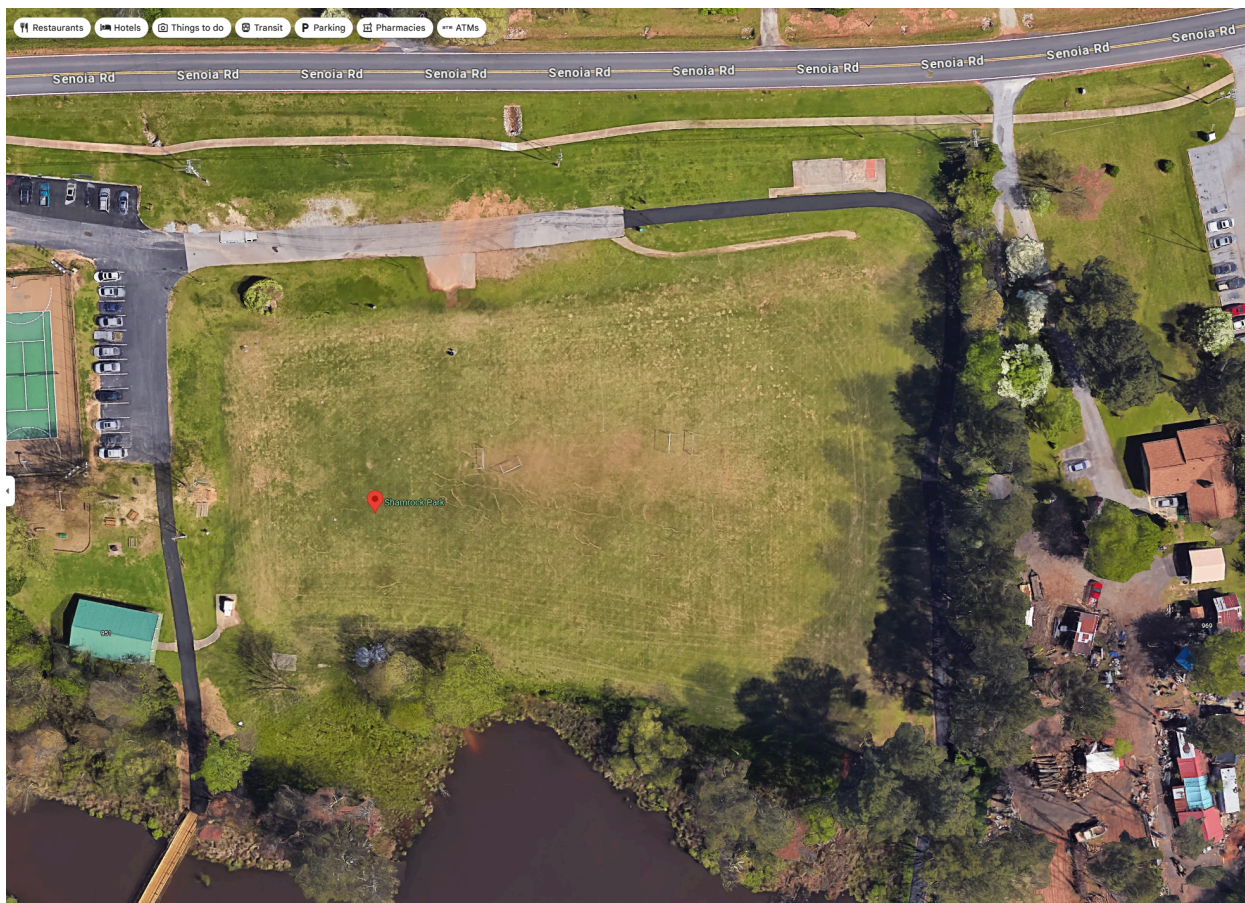


Tyrone Shamrock Park

This document contains proprietary and confidential information. It is submitted solely for the purpose of evaluation by authorized decision makers and may not be disclosed, reproduced, or shared with any third party without the express written consent of Event Technologists.

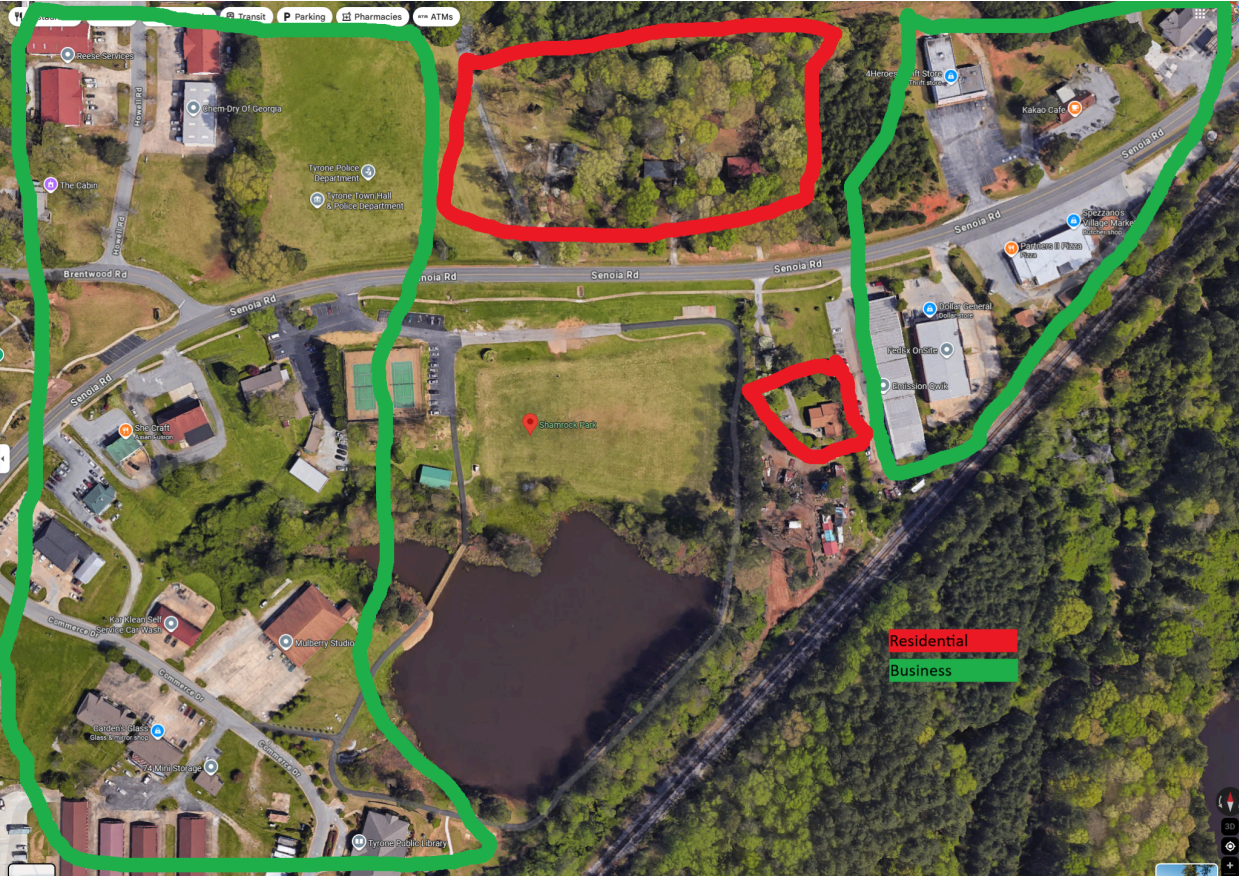
This document and designs contained herein is owned by Event Technologists and can be adapted as appropriate at their discretion to meet the complex and changing needs of the event in question.

Park and Surrounding Fields

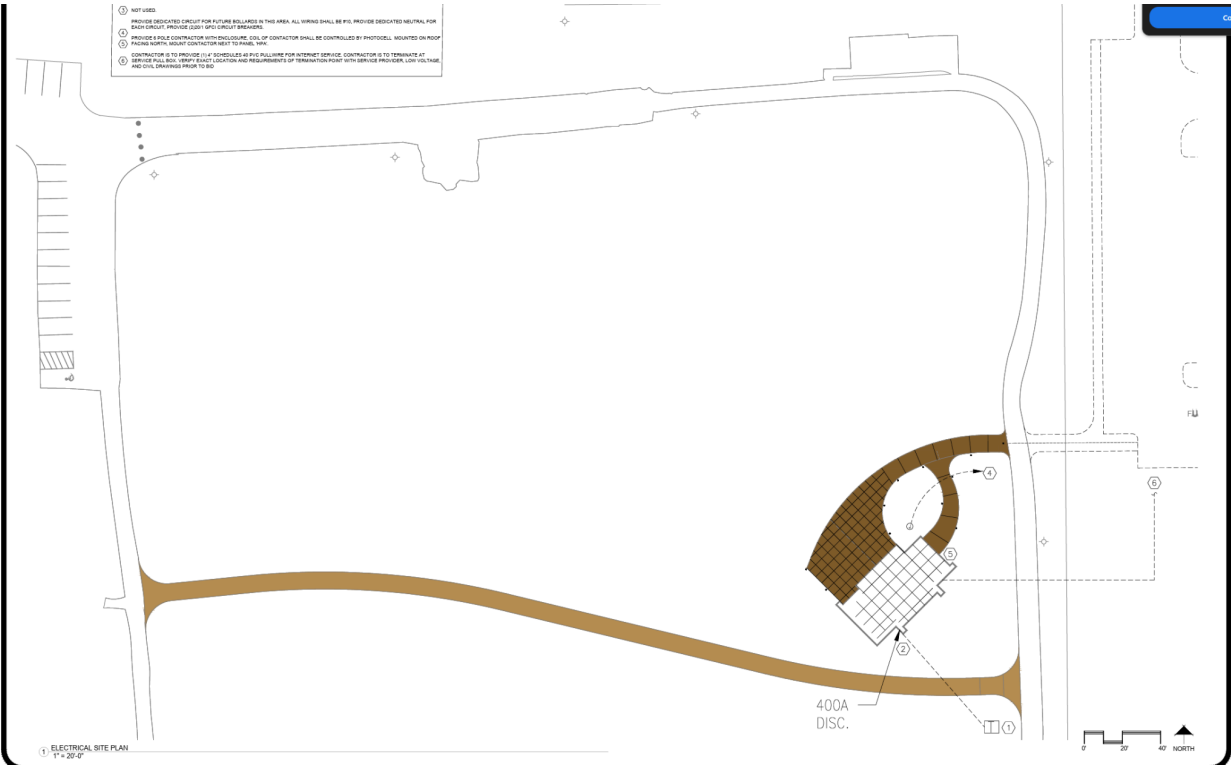


- Ingress is through the parking lot near the tennis courts
- Client instructs that it is OK to drive across the grass (though we should drive on the path to preserve their grass)

Community Awareness Zones

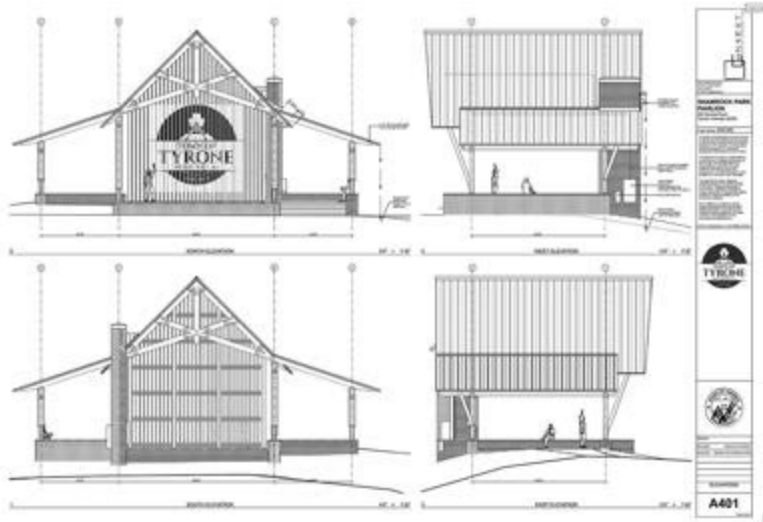


Site Electric Plot (note dimensions)



- Estimated Max Throw: 375' (Stage front to opposite corner near bollards)
- Client says there will be bleachers set up 100-150' from stage
- SPL should be such that vendor tents around the perimeter can hear the music but carry on conversations - target 85 dba
- Crowd is a family friendly mix with a good mix of older folks. SPL at stage target < 100 dba

Pavilion Drawings



- Extremely low resolution....
- Estimated Max Trim Height: 15'
- Stage Height 2.5'
- Subwoofer Push 6'
- Line array hung from thrust of main beam in front of main post/brace.
- Todo: Get with Don Whitten - Context Designs about rigging (269 lb - static load)

Electrical Plans and summary for vendors: (provided by client)

- Utility / Service: 240/120V single-phase
- Main service disconnect: 400A disconnect ("400A DISC"); service conductors routed to this disconnect
- Primary electrical equipment area (on building): Electric Meter, Electrical Disconnect, and Lighting & AV Control Panels are grouped together.
- Vendor receptacles available: GFCI receptacles are shown on the power plan with NEMA L5-20R (20A twist-lock, 125V) or NEMA 5-20R (20A, 125V)
- Audio/backline: use nearest available GFCI receptacle(s) in the Service/AV Equipment area to minimize cable runs.
- Lighting: use separate circuits from audio where available (Please see panel)

Electrical Observations and Todo

- I inspected the site twice and found no evidence of the twist lock outlets. It looks like work is ongoing.

- There is a disco on site so I assume we can get tails installed
- ET will provide power distros

System Design and Max SPL Predictions (subject to change)

Line Array Configuration (SINGLE COLUMN) :

	Model	Quantity	Angle [°]	Eyelet		Weight [lb]
Flybar # 1	DRK10	1	0	10		26.46
				Equ Set	Delay [ms]	
Box# 1			2.5	4	0	30.42
Box# 2			0	4	0	30.42
Box# 3			0	4	0	30.42
Box# 4			0	4	0	30.42
Box# 5	T4	8	0	4	0	30.42
Box# 6			2.5	4	0	30.42
Box# 7			2.5	4	0	30.42
Box# 8			2.5	4	0 </td <td>30.42</td>	30.42
Total:		9				269.85

Line Array Positioning:

Flybar Height [ft]	Columns Gap [ft]	Array-Stage Offset [ft]
15	35	0

Line Array Info:

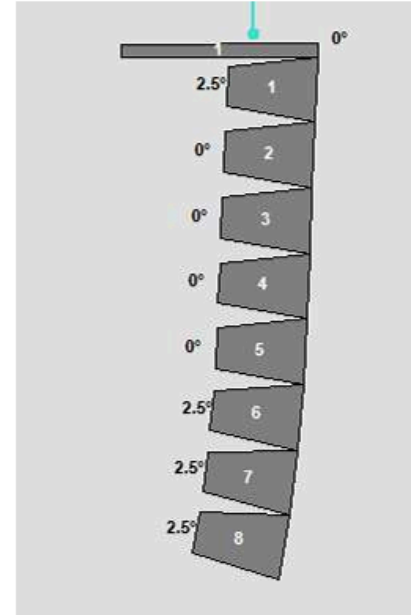
Coverage Start [ft]	Coverage Stop [ft]	Array Shape	Audience
20	200	Spiral	Standing

Applied loads and safety datas:

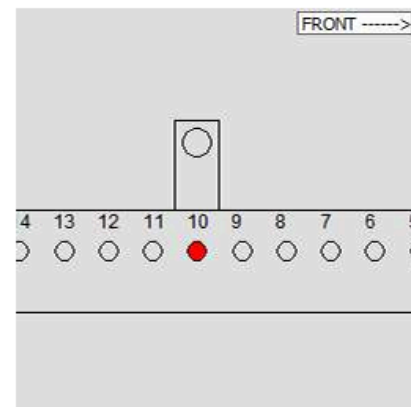
Eurocode 3 Limits
Mechanical Safety: Ok

FLYBAR PICK POINTS								
	SINGLE		DUAL		ACCESSORIES			
PICK POINT	10	n°	PICK POINT	n°	-	LOAD	0 %	
LOAD	49	%	LOAD		%	-	LOAD	0 %

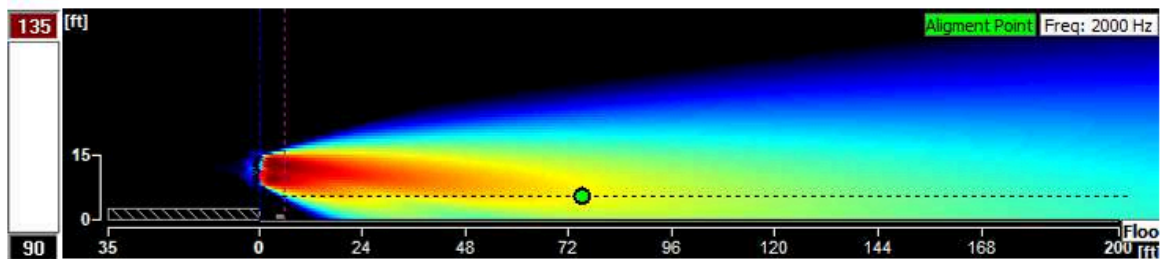
Line Array Side View:



Flybar Side Detail View:



Line Array SPL Side View:



System Checks:

Configuration Check:	OK
Mechanical Safety:	OK
Delays Check:	DELAY TO SUBWOOFERS

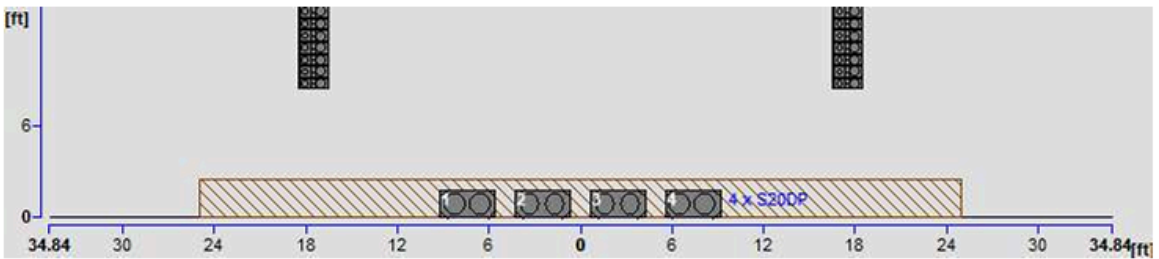
Note:

This is the speculative design. System design might change depending on the needs of the event, size of crowd, and coverage necessary
Line array hung from truss of main beam parallel with front of stage. Estimated trim height 12' above stage.

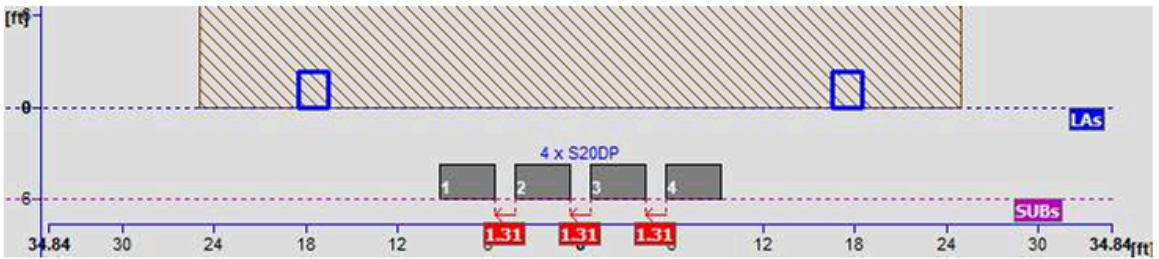
Subwoofer Configuration/Positioning:

	Model	Quantity	Channel	Side	Delay [ms]	Polarity [°]	X-Over Freq [Hz]	Subs-Stage Offset [ft]	Config.
Sub# 1	S20DP	4	C	FRONT	5.5	0	90	5.98	Line
Sub# 2				FRONT	5.5	0	90	5.98	
Sub# 3				FRONT	5.5	0	90	5.98	
Sub# 4				FRONT	5.5	0 <td 90	5.98		
Total:		4							

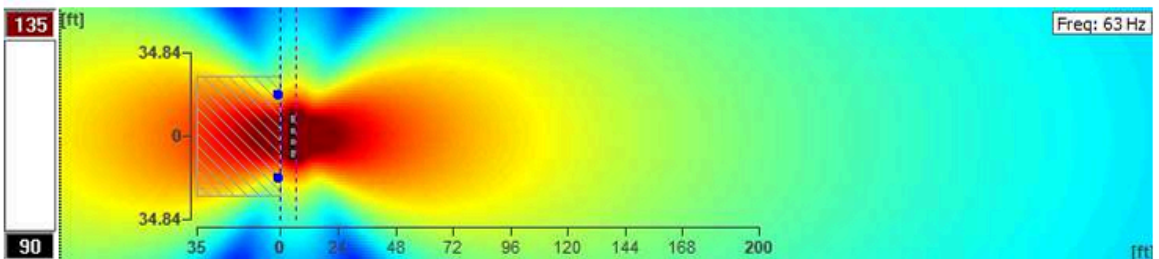
Subwoofer Front View:



Subwoofer Top View:



Subwoofer SPL Top View:



System Checks:

- Configuration Check: OK
- Mechanical Safety: OK
- Delays Check: DELAY TO SUBWOOFERS

Note:

This is the speculative design. System design might change depending on the needs of the event, size of crowd, and coverage necessary
Line array hung from truss of main beam parallel with front of stage. Estimated trim height 12' above stage.

