

LANDSCAPE NOTES

LANDSCAPE INSTALLATION:

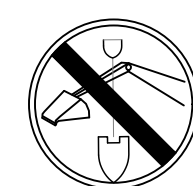
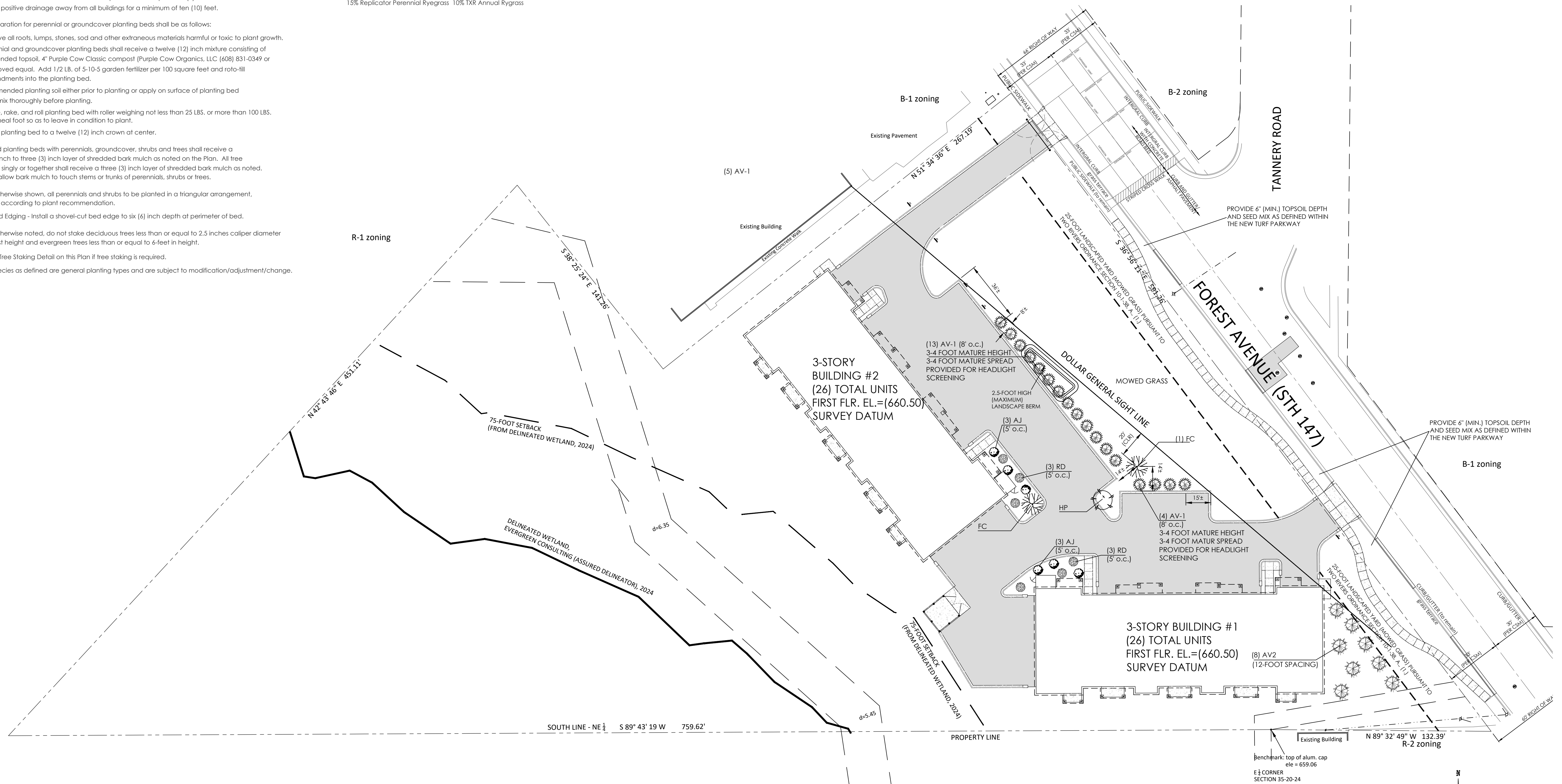
- All written dimensions supersede scaled dimensions.
- The Contractor shall verify location of all underground utilities and additional information prior to commencing construction.
- Rough grading and drainage construction is to be completed prior to Landscape Contractor's work. Verify all existing site and grading conditions prior to construction.
- All work shall be in conformance with all applicable local codes and ordinances.
- All areas disturbed by grading or site construction shall be fine graded, planted or seeded. See notes for specified seed mixes and installation procedures.
- Contractor shall verify plant quantities shown on the Plan and provide a list to the client identifying the species and size to be used throughout the project. The Owner's representative reserves the right to reject any substandard planting material. Rejected material shall be removed from the project site immediately.
- All turf grass areas shall receive a blended topsoil mix to a depth of six (6) inches. Contractor shall provide positive drainage away from all buildings for a minimum of ten (10) feet.
- Soil preparation for perennial or groundcover planting beds shall be as follows:
 - Remove all roots, lumps, stones, sod and other extraneous materials harmful or toxic to plant growth.
 - Perennial and groundcover planting beds shall receive a twelve (12) inch mixture consisting of 8" blended topsoil, 4" Purple Cow Classic compost (Purple Cow Organics, LLC (608) 831-0349 or approved equal. Add 1/2 LB. of 5-10-5 garden fertilizer per 100 square feet and roto-till amendments into the planting bed.
 - Mix amended planting soil either prior to planting or apply on surface of planting bed and mix thoroughly before planting.
 - Grade, rake, and roll planting bed with roller weighing not less than 25 LBS. or more than 100 LBS. per lineal foot so as to leave in condition to plant.
 - Grade planting bed to a twelve (12) inch crown at center.
- All mixed planting beds with perennials, groundcover, shrubs and trees shall receive a two (2) inch to three (3) inch layer of shredded bark mulch as noted on the Plan. All tree planted singly or together shall receive a three (3) inch layer of shredded bark mulch as noted. Do not allow bark mulch to touch stems or trunks of perennials, shrubs or trees.
- Unless otherwise shown, all perennials and shrubs to be planted in a triangular arrangement, spaced according to plant recommendation.
- Plant Bed Edging - Install a shovel-cut bed edge to six (6) inch depth at perimeter of bed.
- Unless otherwise noted, do not stake deciduous trees less than or equal to 2.5 inches caliper diameter at breast height and evergreen trees less than or equal to 6-feet in height.
- See the Tree Staking Detail on this Plan if tree staking is required.
- Plant species as defined are general planting types and are subject to modification/adjustment/change.

SEED MIXES:

SEEDING TURF FOR LAWN AREAS:

Sow at 5 lbs. / 1,000 sq. ft.
 "Supreme Lawn Seed Mix"
 Available from Reinders, Inc. (800) 785-3301, or approved equal
 To be installed and maintained per supplier's specifications.
 17% Mercury Kentucky Bluegrass 16% America Kentucky Bluegrass
 17% SR 2100 Kentucky Bluegrass 25% Gamet Creeping Red Fescue
 15% Replicator Perennial Ryegrass 10% TXR Annual Ryegrass

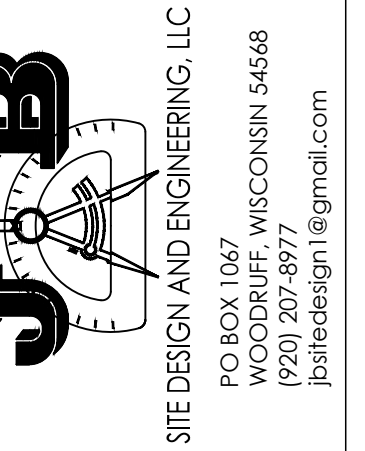
SYMBOL	MARK	QTY.	BOTANICAL NAME	COMMON NAME	PLANTED SIZE	MATURE SPREAD/CANOPY
	AV-1	17	THUJA OCCIDENTALIS	LITTLE GIANT ARBORVITAE	POTED	4 FOOT SPREAD (MAXIMUM)
	AV-2	8	THUJA PLICATA	GREEN GIANT ARBORVITAE	2" DIA.	15 FOOT SPREAD (MAXIMUM)
	FC	2	MALUS HYBRID 'PRAIRIEFIRE'	PRAIRIEFIRE FLOWERING CRABTREE	2" DIA.	20 FOOT CANOPY (MAXIMUM)
	HP	1	POPULUS X CANADENSIS	HYBRID POPLAR	2" DIA.	30 FOOT SPREAD (MAXIMUM)
	AJ	6	JUNIPERUS HORIZONTALIS 'PLUMOSA'	ANDORRA JUNIPER	12"-15"	6 FOOT SPREAD (MAXIMUM)
	RD	6	CORNUS SERICEA	ARTIC FIRE DOGWOOD	30"-36"	5 FOOT SPREAD (MAXIMUM)



CALL DIGGERS' HOTLINE
 1-800-242-8511

TOLL FREE TO OBTAIN LOCATION OF UNDERGROUND BEFORE YOU DIG.
 WISCONSIN STATUTE 182.0715 REQUIRES MIN. OF 3 WORK DAYS NOTICE
 BEFORE YOU EXCAVATE.

NO.	REVISIONS	DATE



Issue Dates

Revision	Date
#1	11-22-24
CITY OF TWO RIVERS REVIEW COMMENTS DATED 11-07-24	
#3	03-26-26
REVISED LANDSCAPE PLAN TO ELIMINATE ALL PROPOSED LANDSCAPING WITHIN SIGHT LINE	

MULTI-FAMILY RESIDENTIAL DEVELOPMENT
 3000 FOREST AVENUE
 CITY OF TWO RIVERS, WISCONSIN

SHEET TITLE

DRAWN BY

CHECKED BY

DATE

PROJECT NO.

SHEET NO.

C 5