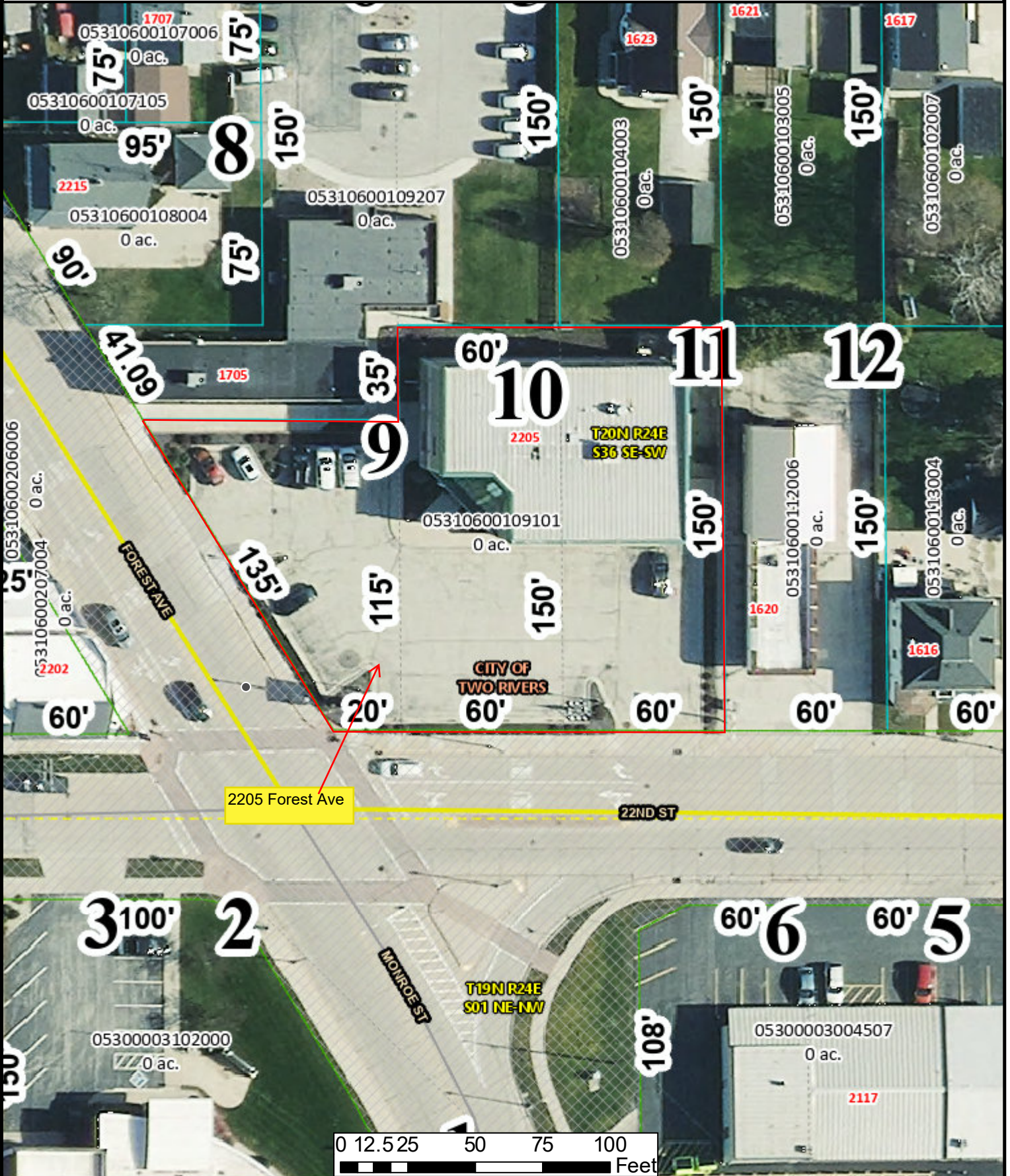
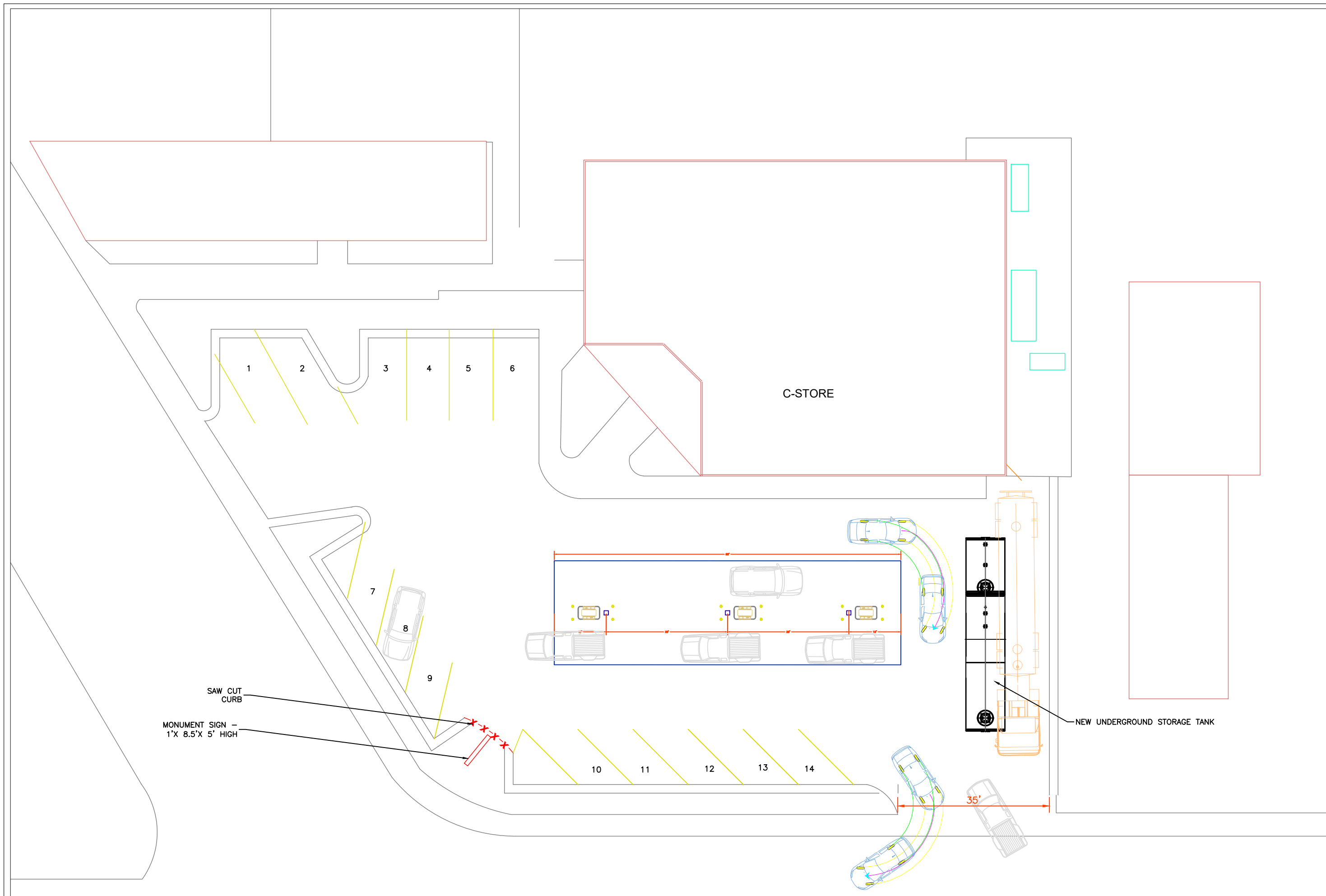


# Manitowoc County Parcel Viewer

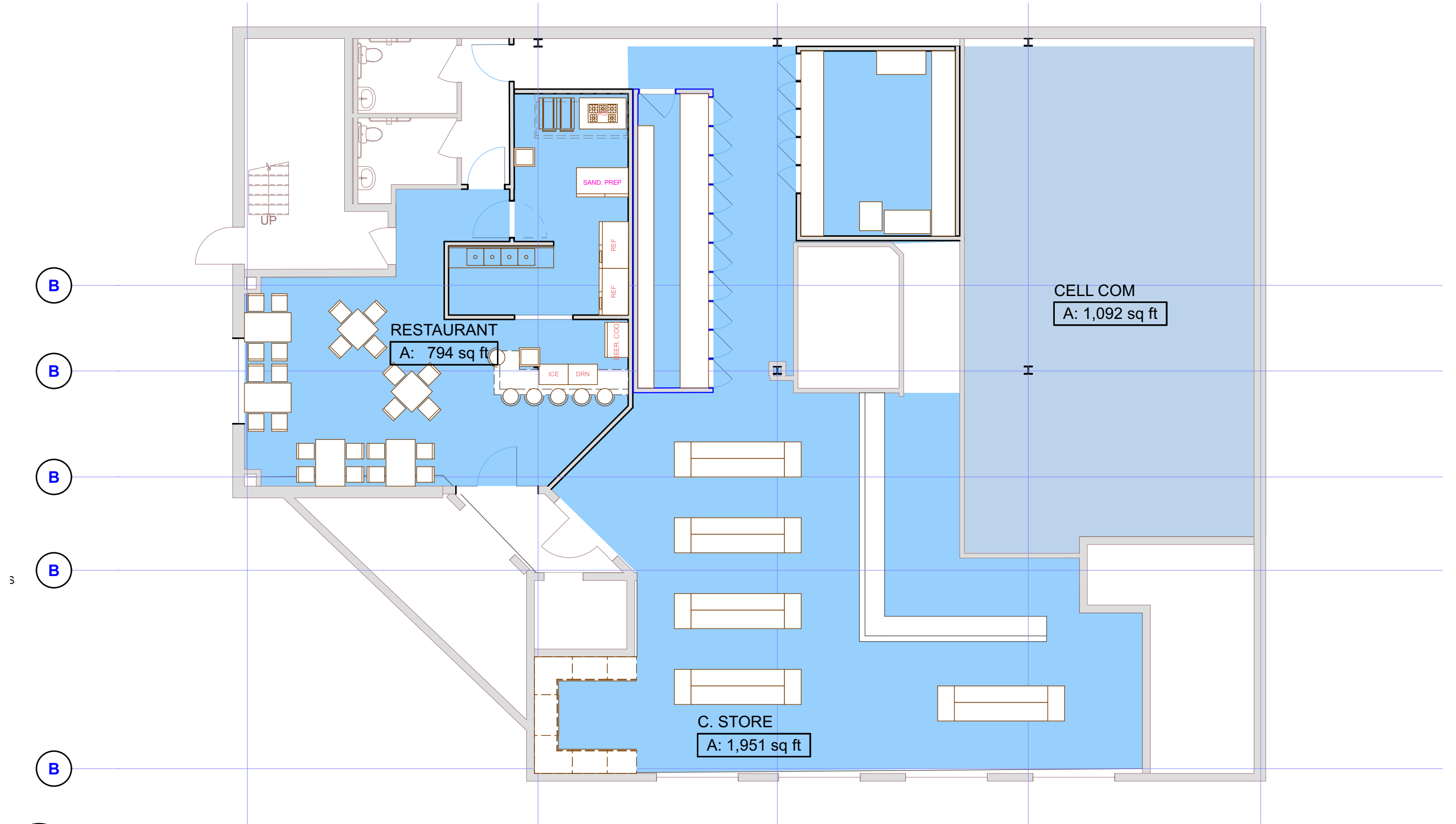




2205 Forest Ave, Two Rivers

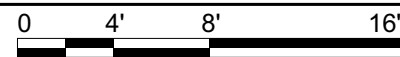
Drawn By :  
 Project number :

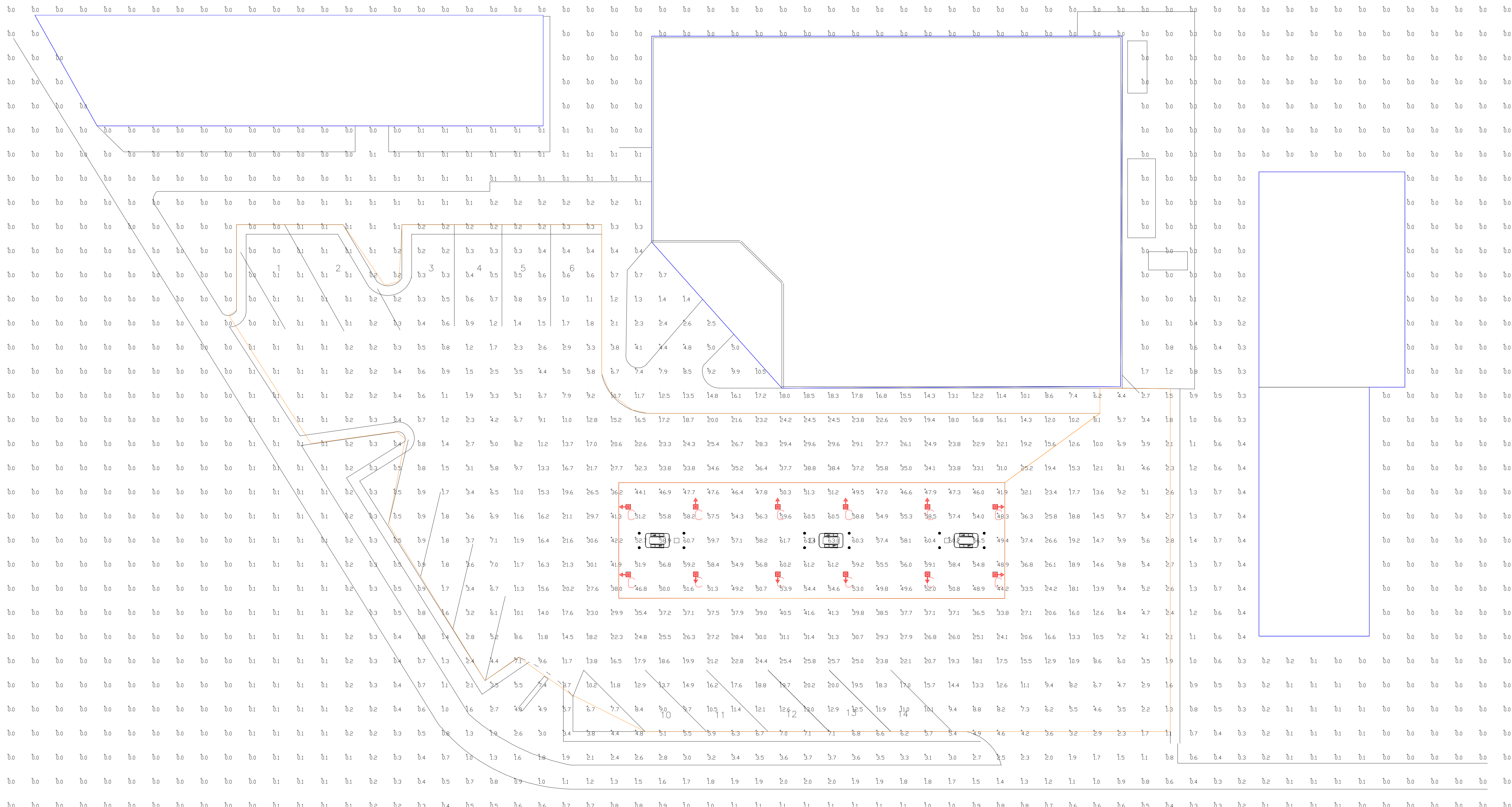
Date:  
 06/06/2024  
 Revisions :



1 First Floor Plan

Scale: 1/8" = 1'-0"





PHOTOMETRIC EVALUATION  
NOT FOR CONSTRUCTION

Based on the information provided, all dimensions and luminaire locations shown represent recommended positions. The engineer and/or architect must determine the applicability of the layout to existing or future field conditions.

This lighting plan represents illumination levels calculated from laboratory data taken under controlled conditions in accordance with The Illuminating Engineering Society (IES) approved methods. Actual performance of any manufacturer's luminaires may vary due to changes in electrical voltage, tolerance in lamps/LED's and other variable field conditions. Calculations do not include obstructions such as buildings, curbs, landscaping, or any other architectural elements unless noted. Fixture nomenclature noted does not include mounting hardware or poles. This drawing is for photometric evaluation purposes only and should not be used as a construction document or as a final document for ordering product.



Calculation Summary							
Label	CalcType	Units	Avg	Max	Min	Avg/Min	Max/Min
ALL CALCS AT GROUND	Illuminance	Fc	6.30	63.4	0.0	N.A.	N.A.
CANDPY	Illuminance	Fc	54.02	63.4	41.9	1.29	1.51
INSIDE CURB	Illuminance	Fc	12.60	42.2	0.0	N.A.	N.A.

Luminaire Schedule										
Symbol	Qty	Label	Arrangement	Description	Mounting Height	LLD	LLF	Arr. Lum. Lumens	Arr. Watts	
	12	C	Single	SCV-LED-23L-SCFT-50	15FT	1.000	1.000	23101	188	

DRAWING SCALED OR CONVERTED FROM  
PDF FILE OR SCANNED / SUBMITTED  
IMAGE. DIMENSIONS ARE APPROXIMATE.

For quotes, please contact  
**WALSH, LONG & CO**  
quotes@walshlong.com

Total Project Watts  
Total Watts = 2296

100% ALUMINUM OR STEEL/BRASS/BLACK PAINT  
100% POLYURETHANE PAINT  
100% POLYURETHANE PAINT

LIGHTING PROPOSAL LO-160440

C-STREET  
2205 FOREST AVE  
FWD RIVERS, WI

BY: SEP DATE: 6/25/24 REV: SHEET 1 OF 1

SCALE: 1"=10' 0 10