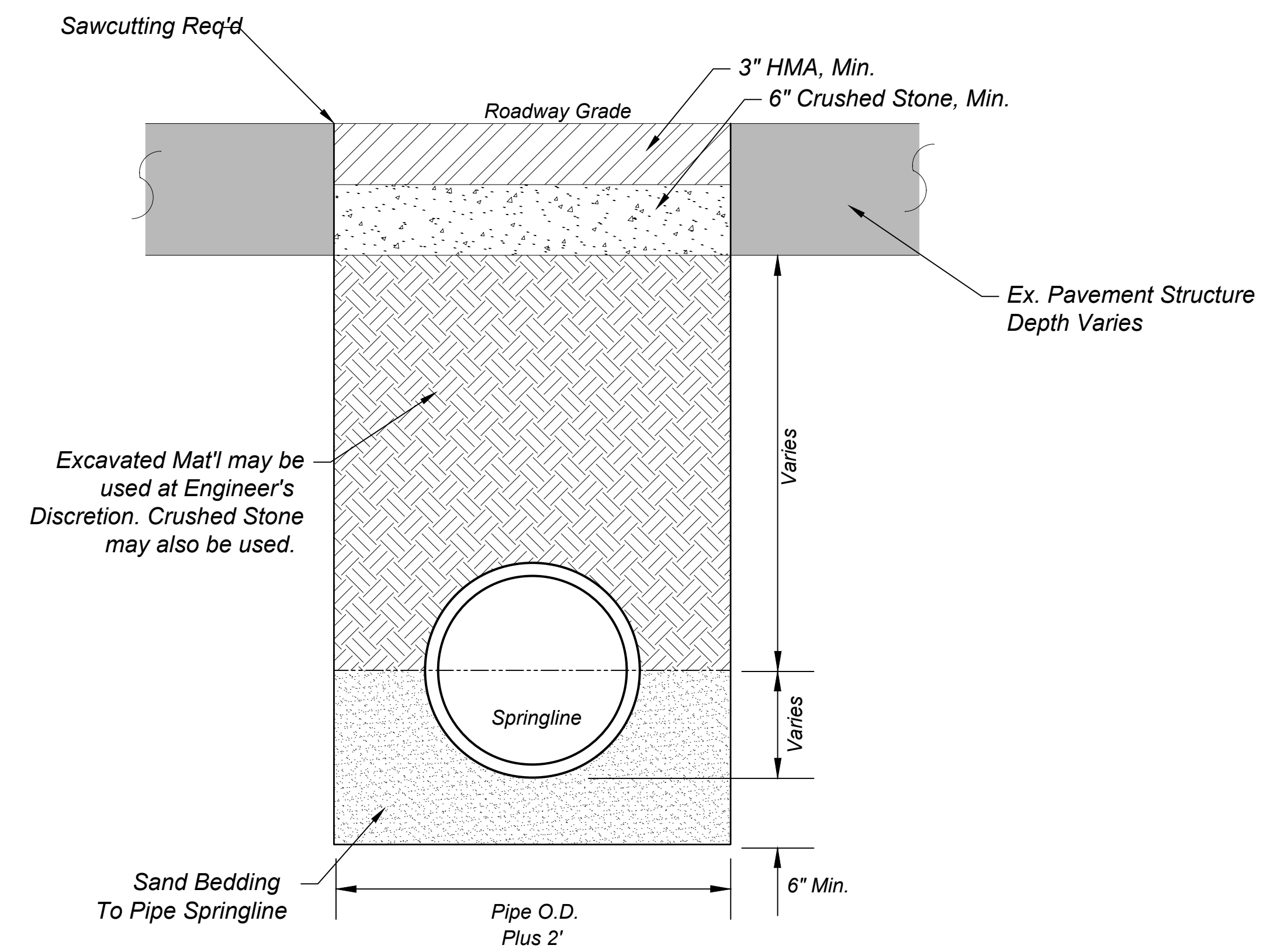


HP-Storm PIPE INSTALLATION (NON-ROADWAY)
Not to Scale



HP STORM INSTALLATION (ROADWAY)
Not to Scale

PREPARED BY:



1050 N. EASON BLVD. TUPELO, MS 38804
OFFICE: 601.927.4012 dabbscorp@gmail.com

DRAWN: TC SCALE: 0:0
DESIGNED: DD DATE: 05/30/2023
CHECKED: DD PROJECT: 0

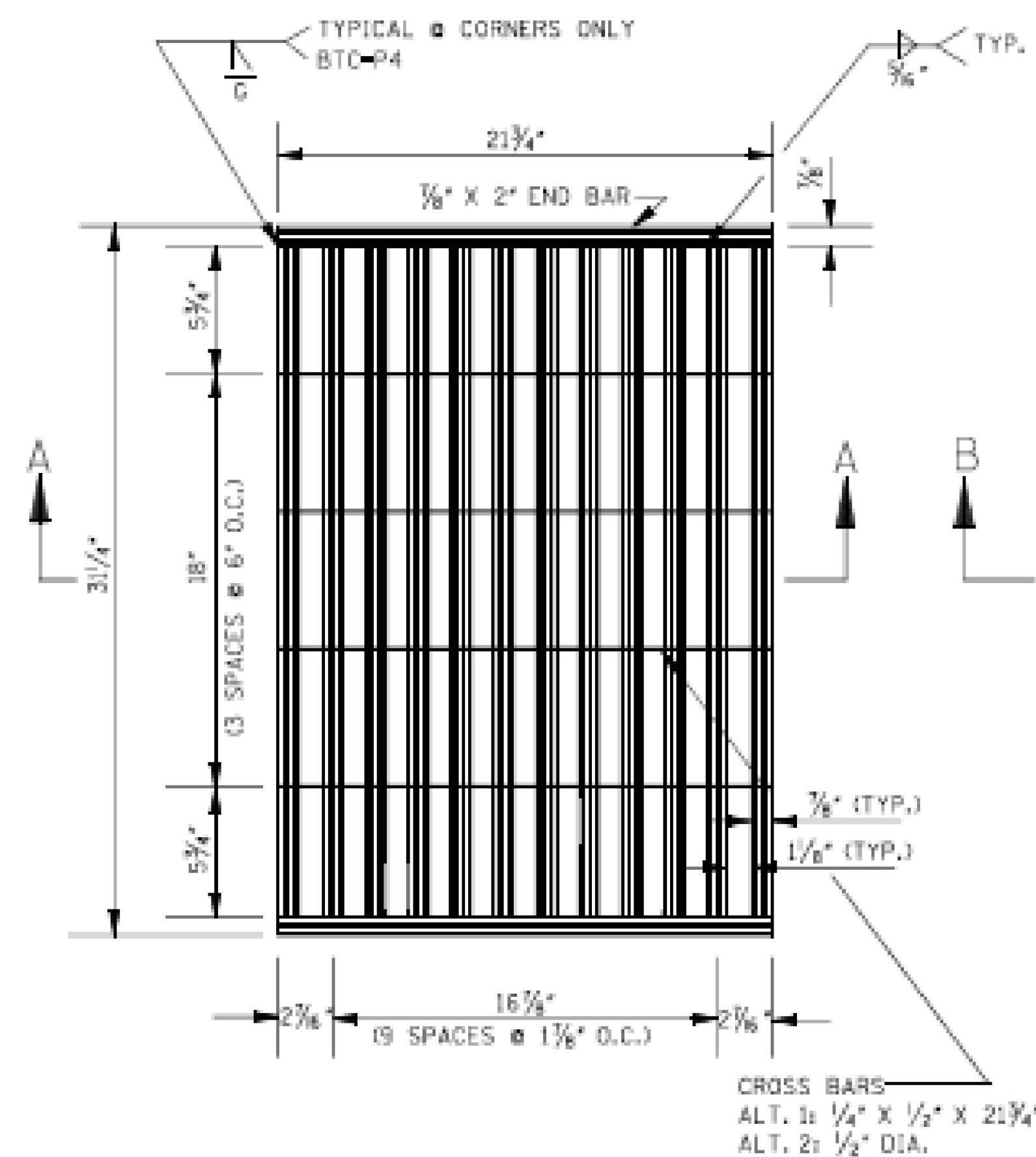
NO.	DATE	REMARKS	NO.	DATE	REMARKS

SHEET TITLE:

PIPE INSTALLATION DETAILS

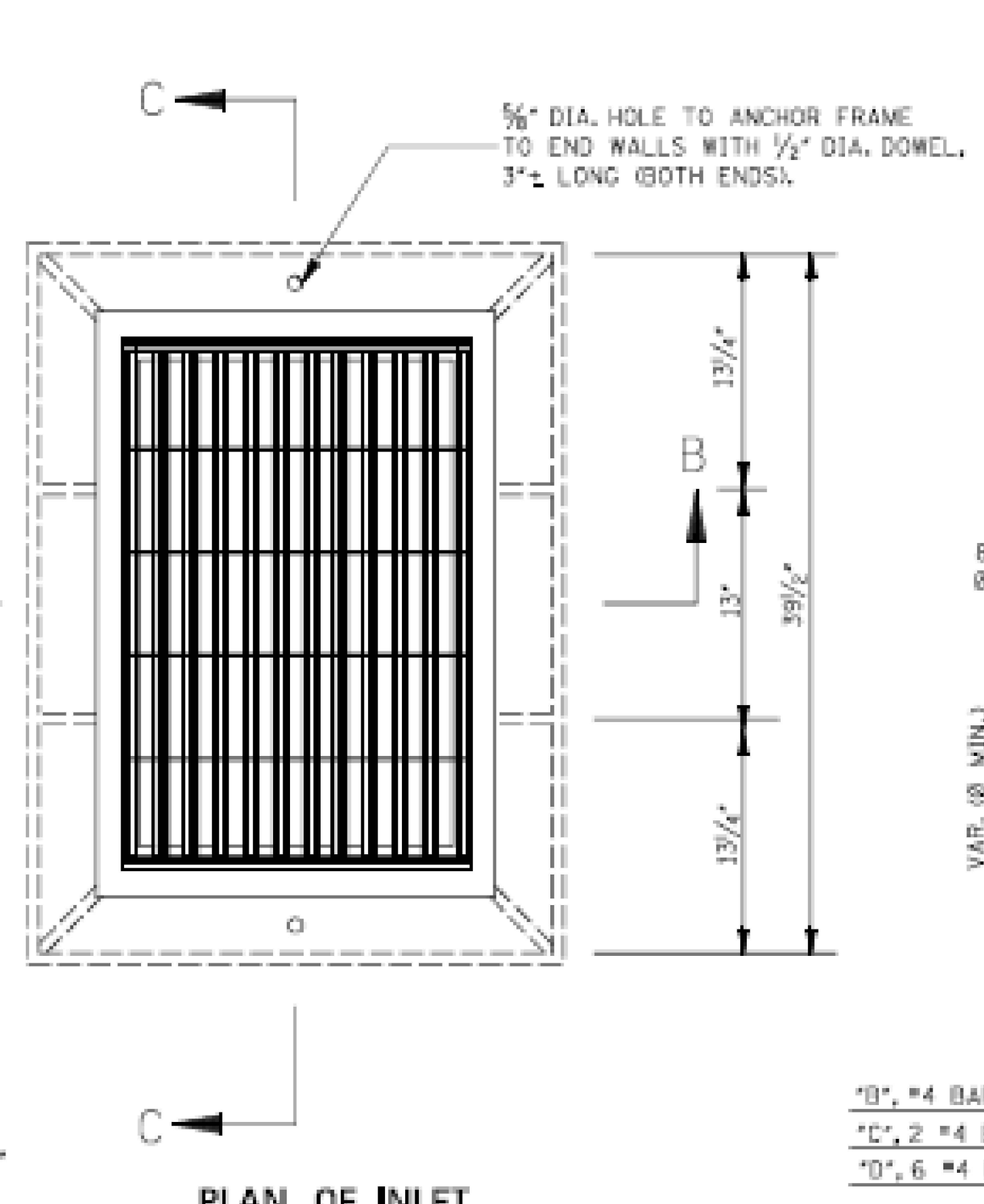
SHEET NO:

C3.2

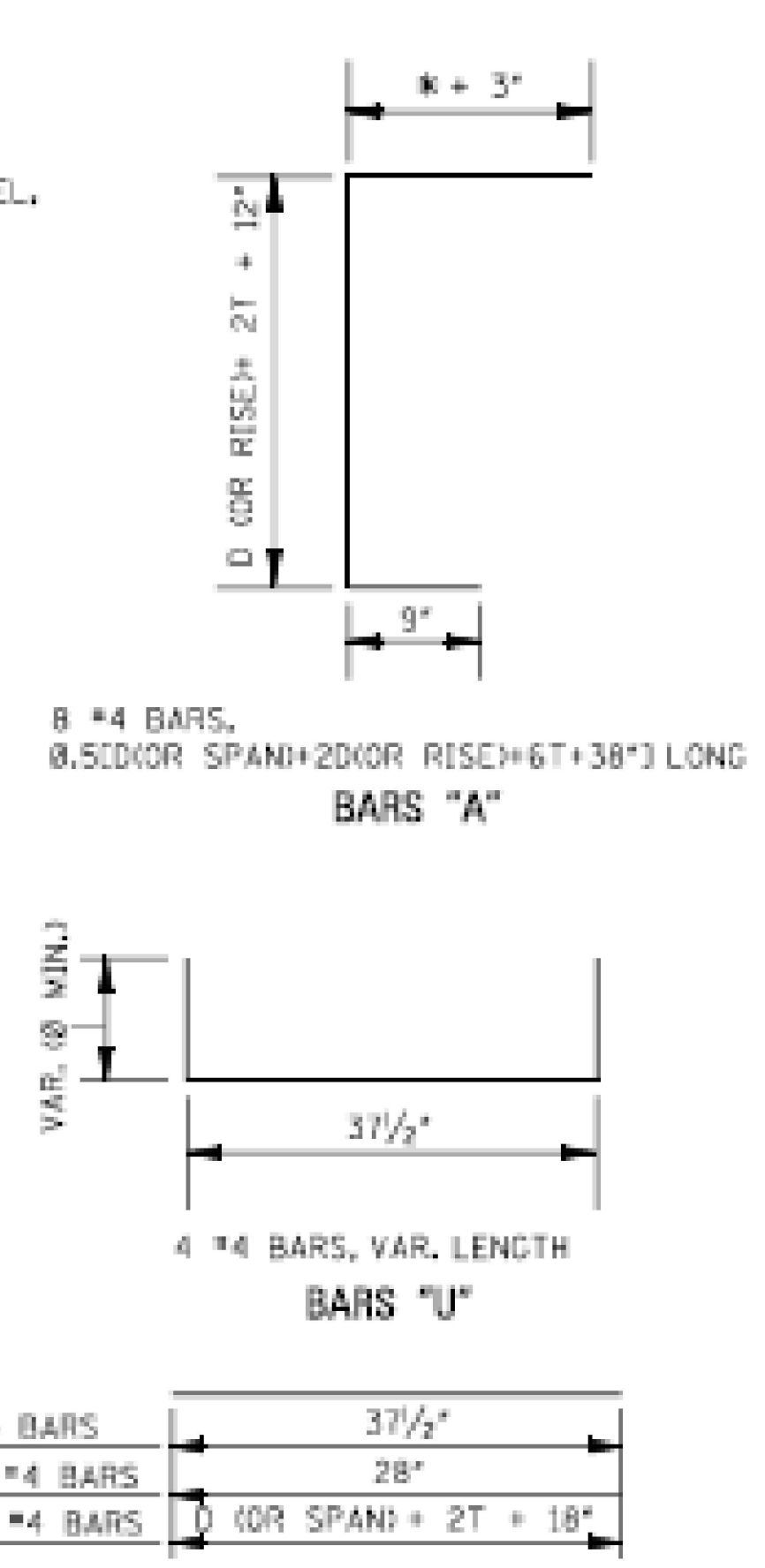


PLAN OF GRATE NO.1

NOTE: FOR OTHER GRATE DETAILS SEE SHEET 10-2.



PLAN OF INLET

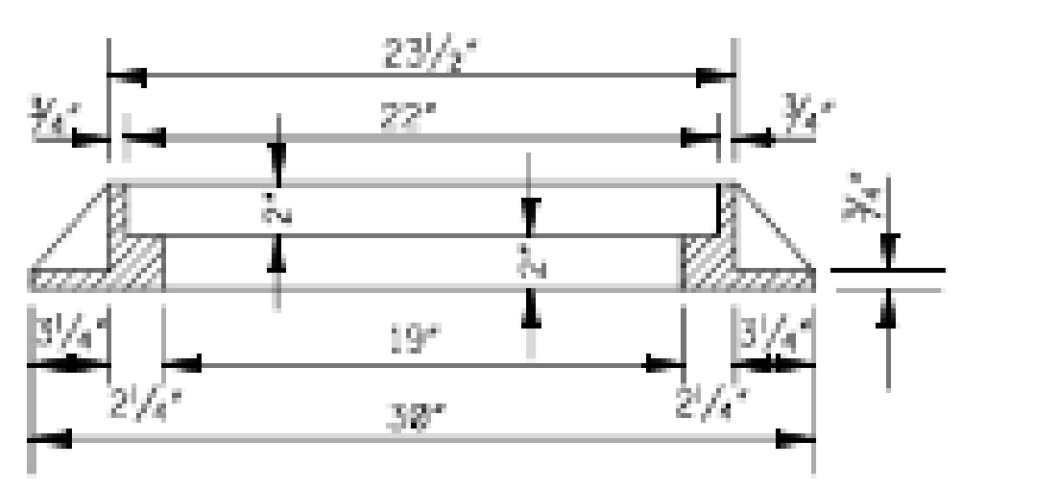


BAR DETAILS

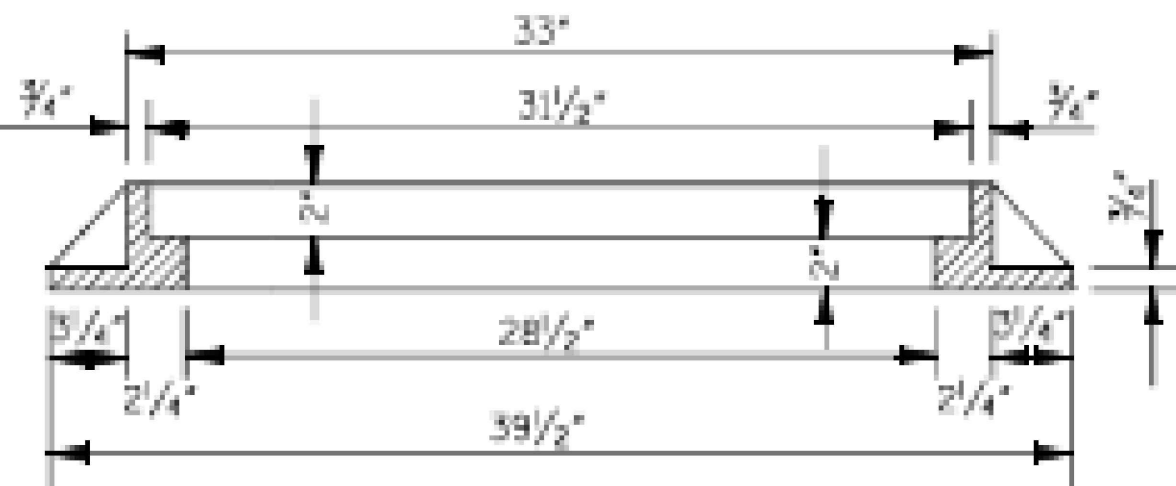
*NOTE:
 $\frac{D \text{ (OR SPAN)} + 2T - 18"}{2}$

PIPE SIZE	MIN. DEPTH TO F.L.	MIN. DEPTH INLET		PIPE OPENING DEDUCTION (yd ³)	T	BARS/SIZES				
		CONC. (yd ³)	STEEL (lbs)			BARS/SIZES				
						"A" #4	"B" #4	"C" #4	"D" #4	"U" #4
NO. LGTH.	NO. LGTH.	NO. LGTH.	NO. LGTH.	NO. LGTH.						
18"	2.792'	0.869	76	0.053	2 1/2'	8 @ 4'-9 1/2"	12 @ 3'-1 1/2"	2 @ 2'-4"	6 @ 3'-5"	4 @ 3'-9 1/2"
24"	3.334'	1.117	87	0.091	3'	8 @ 5'-4"	14 @ 3'-1 1/2"	2 @ 2'-4"	6 @ 4'-0"	4 @ 3'-9 1/2"
30"	3.875'	1.385	94	0.138	3 1/2'	8 @ 6'-2 1/2"	14 @ 3'-1 1/2"	2 @ 2'-4"	6 @ 4'-7"	4 @ 3'-9 1/2"
36"	4.417'	1.671	105	0.196	4'	8 @ 7'-1"	16 @ 3'-1 1/2"	2 @ 2'-4"	6 @ 5'-2"	4 @ 3'-9 1/2"
42"	4.959'	1.978	116	0.263	4 1/2'	8 @ 7'-11 1/2"	18 @ 3'-1 1/2"	2 @ 2'-4"	6 @ 5'-9"	4 @ 3'-9 1/2"
48"	5.500'	2.305	123	0.340	5'	8 @ 8'-10"	18 @ 3'-1 1/2"	2 @ 2'-4"	6 @ 6'-4"	4 @ 3'-9 1/2"
54"	6.042'	2.650	135	0.427	5 1/2'	8 @ 9'-8 1/2"	20 @ 3'-1 1/2"	2 @ 2'-4"	6 @ 6'-11"	4 @ 3'-9 1/2"
60"	6.583'	3.016	146	0.524	6'	8 @ 10'-7"	22 @ 3'-1 1/2"	2 @ 2'-4"	6 @ 7'-6"	4 @ 3'-9 1/2"
66"	7.125'	3.402	153	0.630	6 1/2'	8 @ 11'-5 1/2"	22 @ 3'-1 1/2"	2 @ 2'-4"	6 @ 8'-1"	4 @ 3'-9 1/2"
72"	7.667'	3.806	164	0.747	7'	8 @ 12'-4"	24 @ 3'-1 1/2"	2 @ 2'-4"	6 @ 8'-8"	4 @ 3'-9 1/2"
22" X 13"	2.417'	0.855	76	0.053	2 1/2'	8 @ 4'-3"	12 @ 3'-1 1/2"	2 @ 2'-4"	6 @ 3'-9"	4 @ 3'-9 1/2"
29" X 18"	2.833'	1.085	83	0.087	3'	8 @ 5'-0 1/4"	12 @ 3'-1 1/2"	2 @ 2'-4"	6 @ 4'-4 1/2"	4 @ 3'-9 1/2"
36" X 23"	3.250'	1.358	94	0.129	3 1/2'	8 @ 5'-10"	14 @ 3'-1 1/2"	2 @ 2'-4"	6 @ 5'-1"	4 @ 3'-9 1/2"
44" X 27"	3.635'	1.631	101	0.185	4'	8 @ 6'-7 1/2"	14 @ 3'-1 1/2"	2 @ 2'-4"	6 @ 5'-10"	4 @ 3'-9 1/2"
51" X 31"	4.068'	1.942	113	0.245	4 1/2'	8 @ 7'-9 1/2"	16 @ 3'-1 1/2"	2 @ 2'-4"	6 @ 6'-5"	4 @ 3'-9 1/2"
58" X 36"	4.500'	2.269	120	0.318	5'	8 @ 8'-3"	16 @ 3'-1 1/2"	2 @ 2'-4"	6 @ 7'-2 1/2"	4 @ 3'-9 1/2"
65" X 40"	4.875'	2.575	130	0.394	5 1/2'	8 @ 9'-0"	18 @ 3'-1 1/2"	2 @ 2'-4"	6 @ 7'-10"	4 @ 3'-9 1/2"
73" X 45"	5.333'	2.966	139	0.489	6'	8 @ 9'-10 1/2"	18 @ 3'-1 1/2"	2 @ 2'-4"	6 @ 8'-7"	4 @ 3'-9 1/2"
88" X 54"	6.167'	3.765	156	0.688	7'	8 @ 11'-6"	20 @ 3'-1 1/2"	2 @ 2'-4"	6 @ 10'-0"	4 @ 3'-9 1/2"

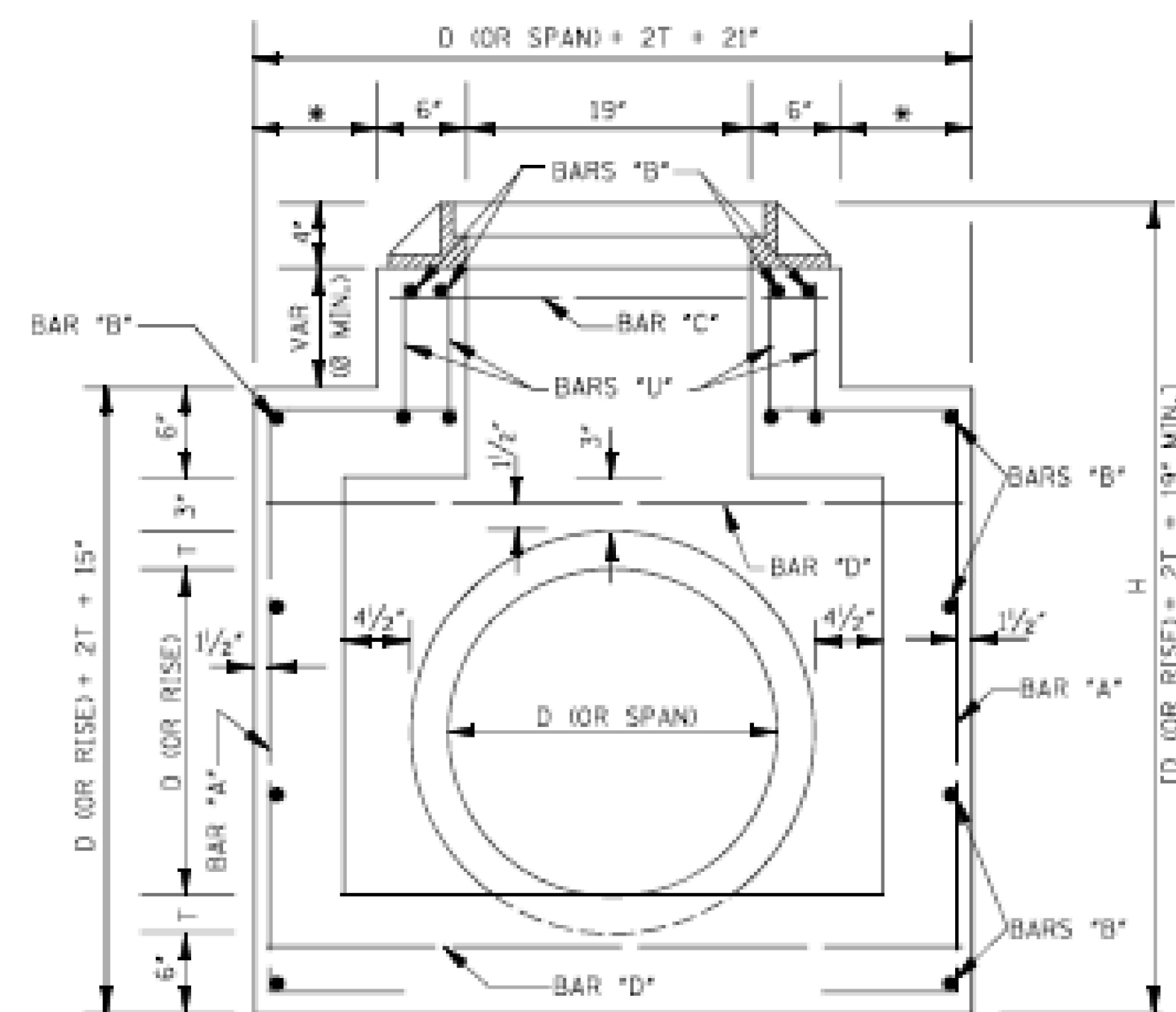
- NOTES:
- ONE (1) PIPE OPENING HAS BEEN DEDUCTED FROM THE STRUCTURE.
 - FOR EACH ADDITIONAL FOOT OF INLET HEIGHT, ADD 0.184 yd³ CLASS "B" CONCRETE AND 17 lbs REINFORCING STEEL.
 - 4 BARS "B" AND 2 BARS "C" REQUIRED PER EACH ADDITIONAL FOOT OF INLET HEIGHT.
 - WEIGHT OF FRAME CASTING = 244 lbs.
WEIGHT OF GRATE = SEE SHEET 10-2.



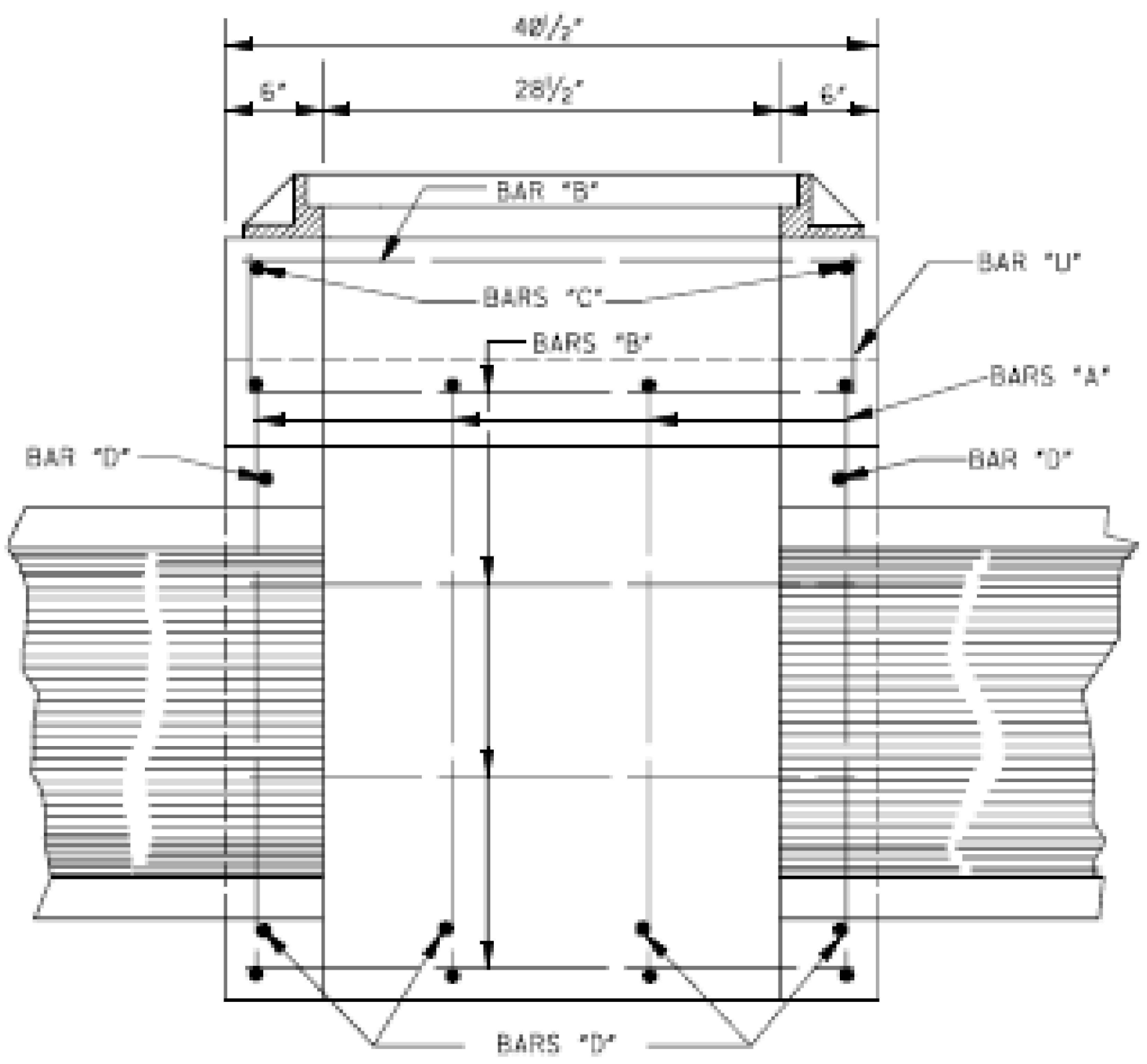
SECTION B-B (FRAME)



SECTION C-C (FRAME)



SECTION B-B

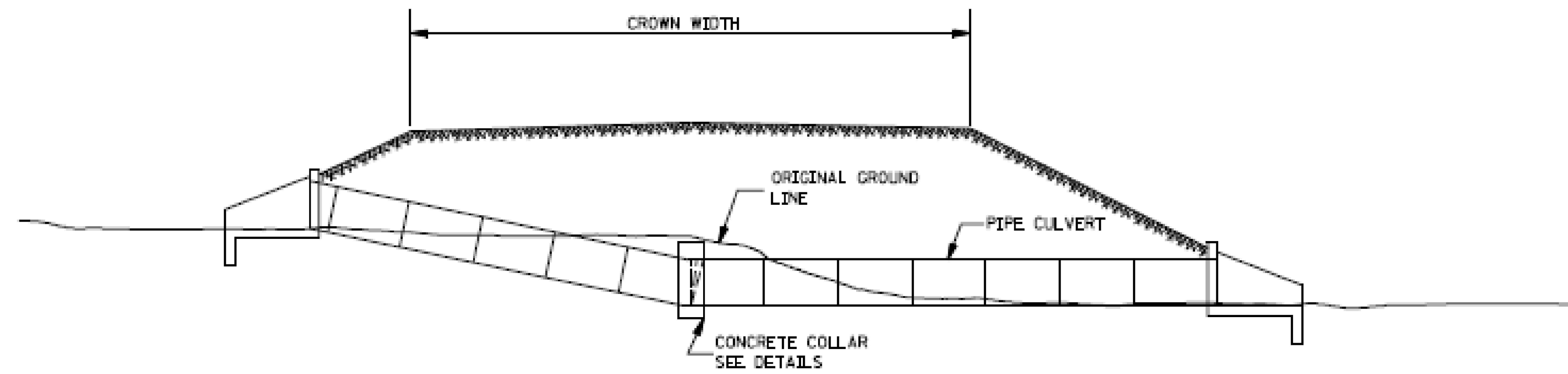


SECTION C-C

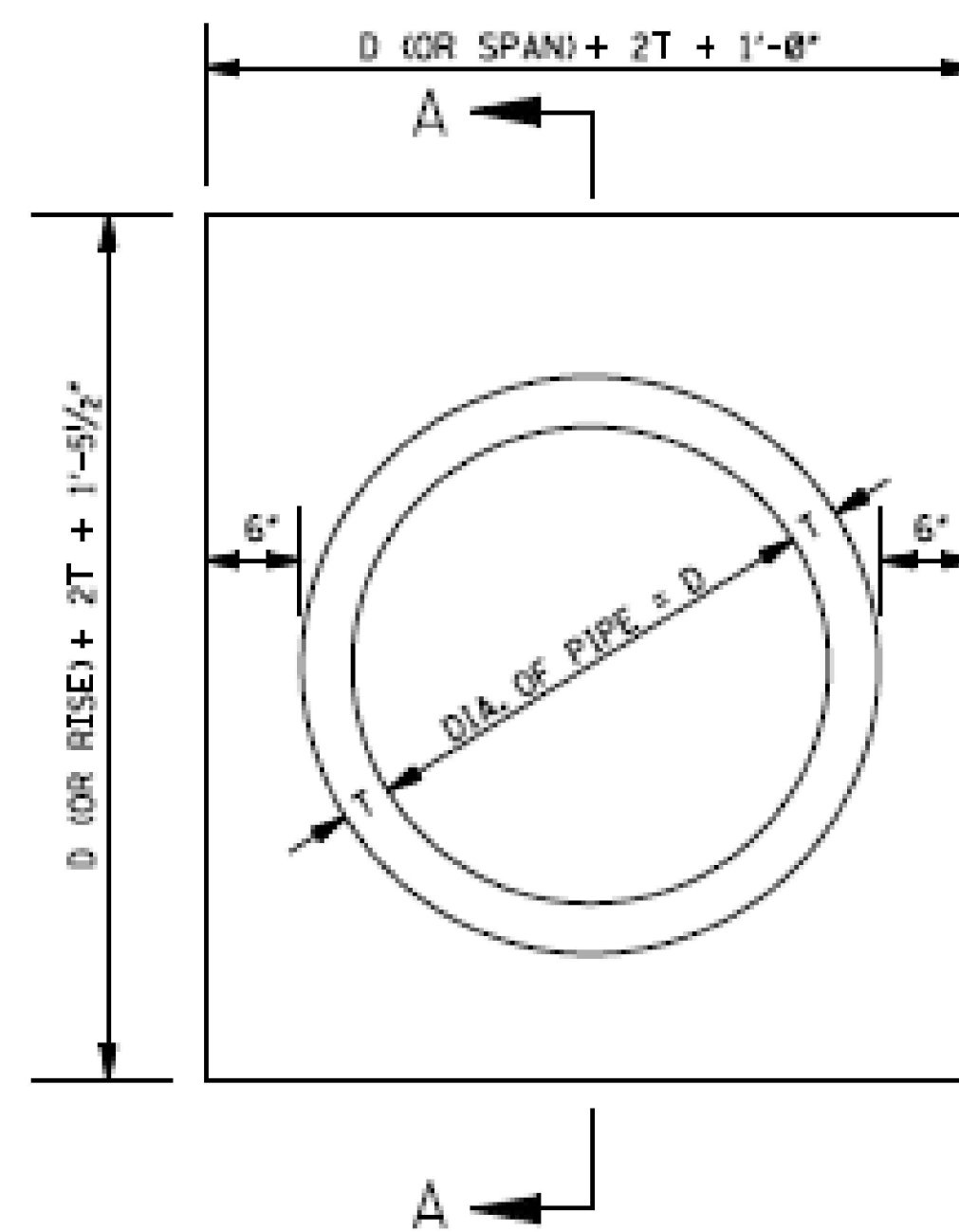
- GENERAL NOTES:
- QUANTITIES SHOWN WILL BE THE BASIS OF PAYMENT UNLESS AUTHORIZED MODIFICATIONS ARE MADE.
 - CONCRETE SHALL BE CLASS "B" CONCRETE AND REINFORCING STEEL SHALL BE DEFORMED BARS.
 - THE CONTRACTOR HAS THE OPTION TO PROVIDE GRATE NO. 1 OR GRATE NO. 2 AS SHOWN ON SHEET 10-2.
 - FRAME TO BE GRAY IRON CASTING, (AASHTO M 105, CLASS 300).

BY	MISSISSIPPI DEPARTMENT OF TRANSPORTATION ROADWAY DESIGN DIVISION STANDARD PLAN
DATE	ISSUE DATE: AUGUST 01, 2017
REVISION	
	STORM SEWER INLET TYPE SS-3
	WORKING NUMBER SS-3
	SHEET NUMBER 6525

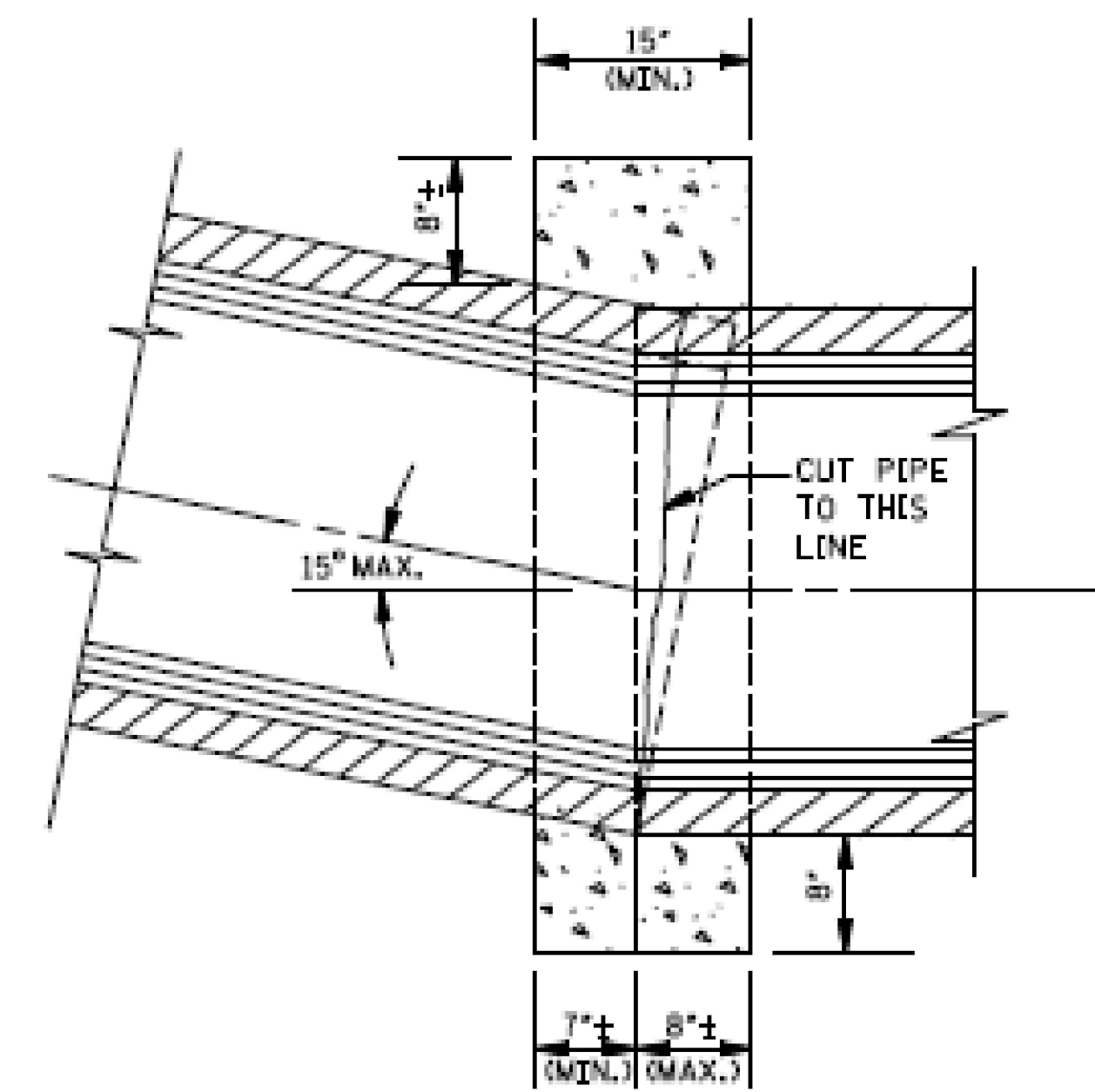




TYPICAL INSTALLATION FOR PIPE CULVERT WITH BROKEN FLOW LINE



ELEVATION OF CONCRETE COLLAR
NOTE: CIRCULAR PIPE IS SHOWN, ARCH PIPE IS SIMILAR.



SECTION A-A

GENERAL NOTES:

1. THE MAXIMUM BEND ANGLE IS 15 DEGREES.
2. THE FOLLOWING QUANTITIES SHALL BE THE BASIS FOR PAYMENT UNLESS AUTHORIZED MODIFICATIONS ARE MADE:

QUANTITIES FOR CONCRETE COLLAR FOR PIPE CULVERTS			
CIRCULAR PIPE		ARCH PIPE	
DIA. OF PIPE	CLASS "B" CONCRETE (yd ³)	SIZE OF PIPE	CLASS "B" CONCRETE (yd ³)
12"	0.240		
15"	0.260	18 x 11	0.280
18"	0.320	22 x 13	0.310
24"	0.410	29 x 18	0.410
30"	0.510	36 x 23	0.490
36"	0.620	44 x 27	0.600
42"	0.730	51 x 31	0.690
48"	0.850	58 x 36	0.820
54"	0.980	65 x 40	0.920
60"	1.110	73 x 45	1.070
66"	1.240	80 x 54	1.366
72"	1.393		

BY	MISSISSIPPI DEPARTMENT OF TRANSPORTATION ROADWAY DESIGN DIVISION STANDARD PLAN
REVISION	CONCRETE PIPE COLLAR
DATE	ISSUE DATE: AUGUST 01, 2017
	WORKING NUMBER PC-1
	SHEET NUMBER 6503

