

Scale 1" = 100'
 Meridian Based on Grid North
 By S.P.C.S. 45 East
 NAD 83 as Established by
 G.P.S. Vertical Reference
 Station-Mississippi

SITE DATA (Residential)	
OWNER	Locust Lane Development LLC
ADDRESS	210 East Main St., Bogalusa, MS 38922
SURVEYOR	MOORE ENGINEERING, BOGALUSA, MISSISSIPPI
PROJECT	MOORE ENGINEERING, BOGALUSA, MISSISSIPPI
ZONING OF TRACT	Medium Density Residential
ACREAGE OF TRACT	57.45 ACRES
TOTAL NUMBER OF LOTS	174
MINIMUM LOT SIZE	2200 SQ. FT.
SETBACKS	FRONT 10 FEET
	SIDE STREET 10 FEET
	SIDE 5 FEET
	REAR 10 FEET
EXISTING LAND USE	Undeveloped

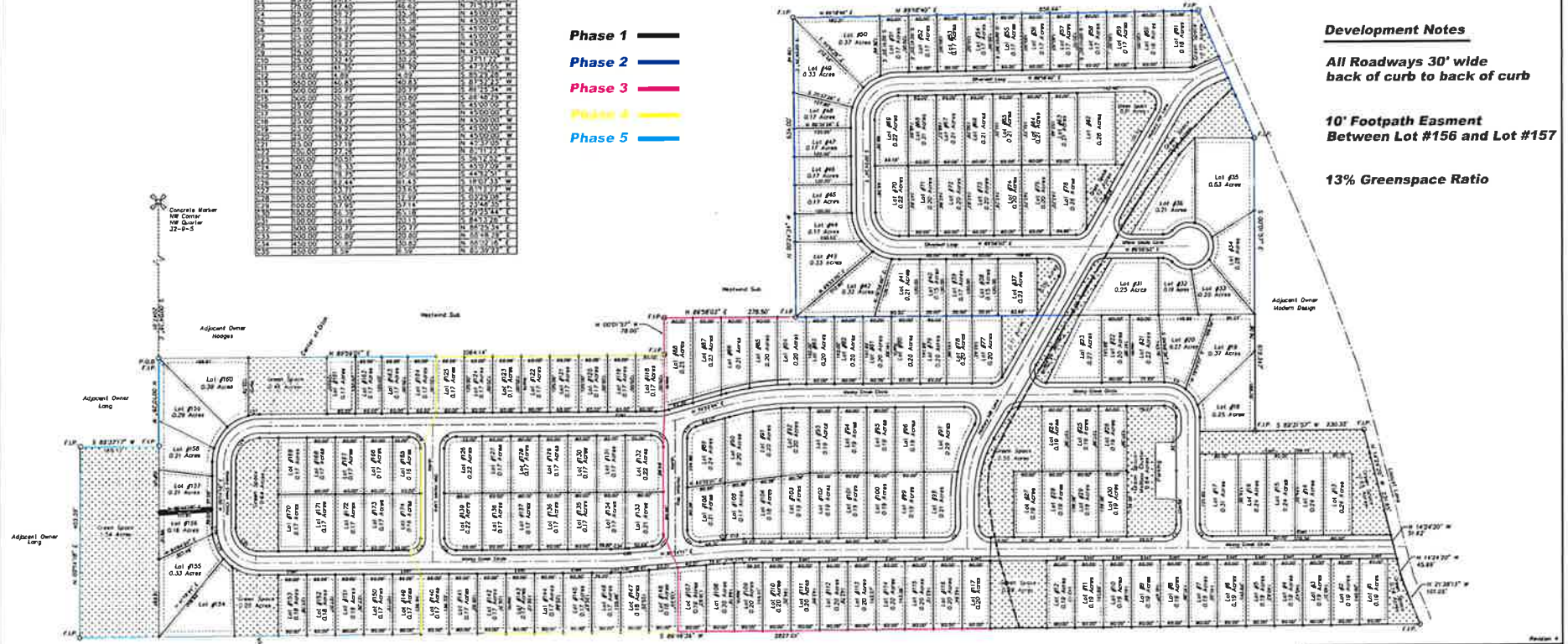
MARK	DATE	BY	DESCRIPTION
1	2/1/26	MM	Final Survey
2	2/1/26	MM	Field Work
3	2/1/26	MM	Field Work
4	2/1/26	MM	Field Work
5	2/1/26	MM	Field Work
6	2/1/26	MM	Field Work
7	2/1/26	MM	Field Work
8	2/1/26	MM	Field Work
9	2/1/26	MM	Field Work
10	2/1/26	MM	Field Work
11	2/1/26	MM	Field Work
12	2/1/26	MM	Field Work
13	2/1/26	MM	Field Work
14	2/1/26	MM	Field Work
15	2/1/26	MM	Field Work
16	2/1/26	MM	Field Work
17	2/1/26	MM	Field Work
18	2/1/26	MM	Field Work
19	2/1/26	MM	Field Work
20	2/1/26	MM	Field Work
21	2/1/26	MM	Field Work
22	2/1/26	MM	Field Work
23	2/1/26	MM	Field Work
24	2/1/26	MM	Field Work
25	2/1/26	MM	Field Work
26	2/1/26	MM	Field Work
27	2/1/26	MM	Field Work
28	2/1/26	MM	Field Work
29	2/1/26	MM	Field Work
30	2/1/26	MM	Field Work
31	2/1/26	MM	Field Work
32	2/1/26	MM	Field Work
33	2/1/26	MM	Field Work
34	2/1/26	MM	Field Work
35	2/1/26	MM	Field Work
36	2/1/26	MM	Field Work
37	2/1/26	MM	Field Work
38	2/1/26	MM	Field Work
39	2/1/26	MM	Field Work
40	2/1/26	MM	Field Work
41	2/1/26	MM	Field Work
42	2/1/26	MM	Field Work
43	2/1/26	MM	Field Work
44	2/1/26	MM	Field Work
45	2/1/26	MM	Field Work
46	2/1/26	MM	Field Work
47	2/1/26	MM	Field Work
48	2/1/26	MM	Field Work
49	2/1/26	MM	Field Work
50	2/1/26	MM	Field Work
51	2/1/26	MM	Field Work
52	2/1/26	MM	Field Work
53	2/1/26	MM	Field Work
54	2/1/26	MM	Field Work
55	2/1/26	MM	Field Work
56	2/1/26	MM	Field Work
57	2/1/26	MM	Field Work
58	2/1/26	MM	Field Work
59	2/1/26	MM	Field Work
60	2/1/26	MM	Field Work
61	2/1/26	MM	Field Work
62	2/1/26	MM	Field Work
63	2/1/26	MM	Field Work
64	2/1/26	MM	Field Work
65	2/1/26	MM	Field Work
66	2/1/26	MM	Field Work
67	2/1/26	MM	Field Work
68	2/1/26	MM	Field Work
69	2/1/26	MM	Field Work
70	2/1/26	MM	Field Work
71	2/1/26	MM	Field Work
72	2/1/26	MM	Field Work
73	2/1/26	MM	Field Work
74	2/1/26	MM	Field Work
75	2/1/26	MM	Field Work
76	2/1/26	MM	Field Work
77	2/1/26	MM	Field Work
78	2/1/26	MM	Field Work
79	2/1/26	MM	Field Work
80	2/1/26	MM	Field Work
81	2/1/26	MM	Field Work
82	2/1/26	MM	Field Work
83	2/1/26	MM	Field Work
84	2/1/26	MM	Field Work
85	2/1/26	MM	Field Work
86	2/1/26	MM	Field Work
87	2/1/26	MM	Field Work
88	2/1/26	MM	Field Work
89	2/1/26	MM	Field Work
90	2/1/26	MM	Field Work
91	2/1/26	MM	Field Work
92	2/1/26	MM	Field Work
93	2/1/26	MM	Field Work
94	2/1/26	MM	Field Work
95	2/1/26	MM	Field Work
96	2/1/26	MM	Field Work
97	2/1/26	MM	Field Work
98	2/1/26	MM	Field Work
99	2/1/26	MM	Field Work
100	2/1/26	MM	Field Work
101	2/1/26	MM	Field Work
102	2/1/26	MM	Field Work
103	2/1/26	MM	Field Work
104	2/1/26	MM	Field Work
105	2/1/26	MM	Field Work
106	2/1/26	MM	Field Work
107	2/1/26	MM	Field Work
108	2/1/26	MM	Field Work
109	2/1/26	MM	Field Work
110	2/1/26	MM	Field Work
111	2/1/26	MM	Field Work
112	2/1/26	MM	Field Work
113	2/1/26	MM	Field Work
114	2/1/26	MM	Field Work
115	2/1/26	MM	Field Work
116	2/1/26	MM	Field Work
117	2/1/26	MM	Field Work
118	2/1/26	MM	Field Work
119	2/1/26	MM	Field Work
120	2/1/26	MM	Field Work
121	2/1/26	MM	Field Work
122	2/1/26	MM	Field Work
123	2/1/26	MM	Field Work
124	2/1/26	MM	Field Work
125	2/1/26	MM	Field Work
126	2/1/26	MM	Field Work
127	2/1/26	MM	Field Work
128	2/1/26	MM	Field Work
129	2/1/26	MM	Field Work
130	2/1/26	MM	Field Work
131	2/1/26	MM	Field Work
132	2/1/26	MM	Field Work
133	2/1/26	MM	Field Work
134	2/1/26	MM	Field Work
135	2/1/26	MM	Field Work
136	2/1/26	MM	Field Work
137	2/1/26	MM	Field Work
138	2/1/26	MM	Field Work
139	2/1/26	MM	Field Work
140	2/1/26	MM	Field Work
141	2/1/26	MM	Field Work
142	2/1/26	MM	Field Work
143	2/1/26	MM	Field Work
144	2/1/26	MM	Field Work
145	2/1/26	MM	Field Work
146	2/1/26	MM	Field Work
147	2/1/26	MM	Field Work
148	2/1/26	MM	Field Work
149	2/1/26	MM	Field Work
150	2/1/26	MM	Field Work
151	2/1/26	MM	Field Work
152	2/1/26	MM	Field Work
153	2/1/26	MM	Field Work
154	2/1/26	MM	Field Work
155	2/1/26	MM	Field Work
156	2/1/26	MM	Field Work
157	2/1/26	MM	Field Work
158	2/1/26	MM	Field Work
159	2/1/26	MM	Field Work
160	2/1/26	MM	Field Work
161	2/1/26	MM	Field Work
162	2/1/26	MM	Field Work
163	2/1/26	MM	Field Work
164	2/1/26	MM	Field Work
165	2/1/26	MM	Field Work
166	2/1/26	MM	Field Work
167	2/1/26	MM	Field Work
168	2/1/26	MM	Field Work
169	2/1/26	MM	Field Work
170	2/1/26	MM	Field Work
171	2/1/26	MM	Field Work
172	2/1/26	MM	Field Work
173	2/1/26	MM	Field Work
174	2/1/26	MM	Field Work

- Phase 1 █
- Phase 2 █
- Phase 3 █
- Phase 4 █
- Phase 5 █



Vicinity Map NTS

- Development Notes**
- All Roadways 30' wide back of curb to back of curb
 - 10' Footpath Easement Between Lot #156 and Lot #157
 - 13% Greenspace Ratio



NOTES:
 1. This Survey Classified As A Class "C" Survey.
 2. Source Of Information From Census Records, Lee County, MS, Chazy City, Instrument #2023002815.
 3. Title Search Not Performed.
 4. Property Boundaries Grid North by GPS Observation.
 5. All Set Iron Pins are 1/2" Diameter.
 F.I.P. Represents Found Iron Pin
 S.I.P. Represents Set Iron Pin
 F.P. Represents Fence Post Found
 Field Work Completed 2/1/26

All digital products produced by Moore Engineering shall not be distributed without authorization. Any and all digital products are not to be used without the accompanying survey plat.
 The plat shall be displayed on any reasonably stable and durable drawing paper, when, in, or on of reproducible quality.
 All digital products are representations of final Survey Plots that will be generated by Moore Engineering and delivered to client at the closing of the project.

I hereby certify that all parts of this survey and drawing have been completed in accordance with the current requirements of the Standards of Practice for Surveying in the State of Mississippi to the best of my knowledge, information, and belief.
 Surveyor's Signature: *MM*



Original Plat not seal and signature

TreeTop Subdivision Preliminary Plat

SECTION 32, T 9 S, R 5 E
 LEE COUNTY, MISSISSIPPI
 SCALE 1" = 100'
 6AM, Mar. 2026

MOORE ENGINEERING COMPANY
 1204 N. SECOND STREET
 HOONEVILLE, MISSISSIPPI 38829
 PROJECT NUMBER - 25-025