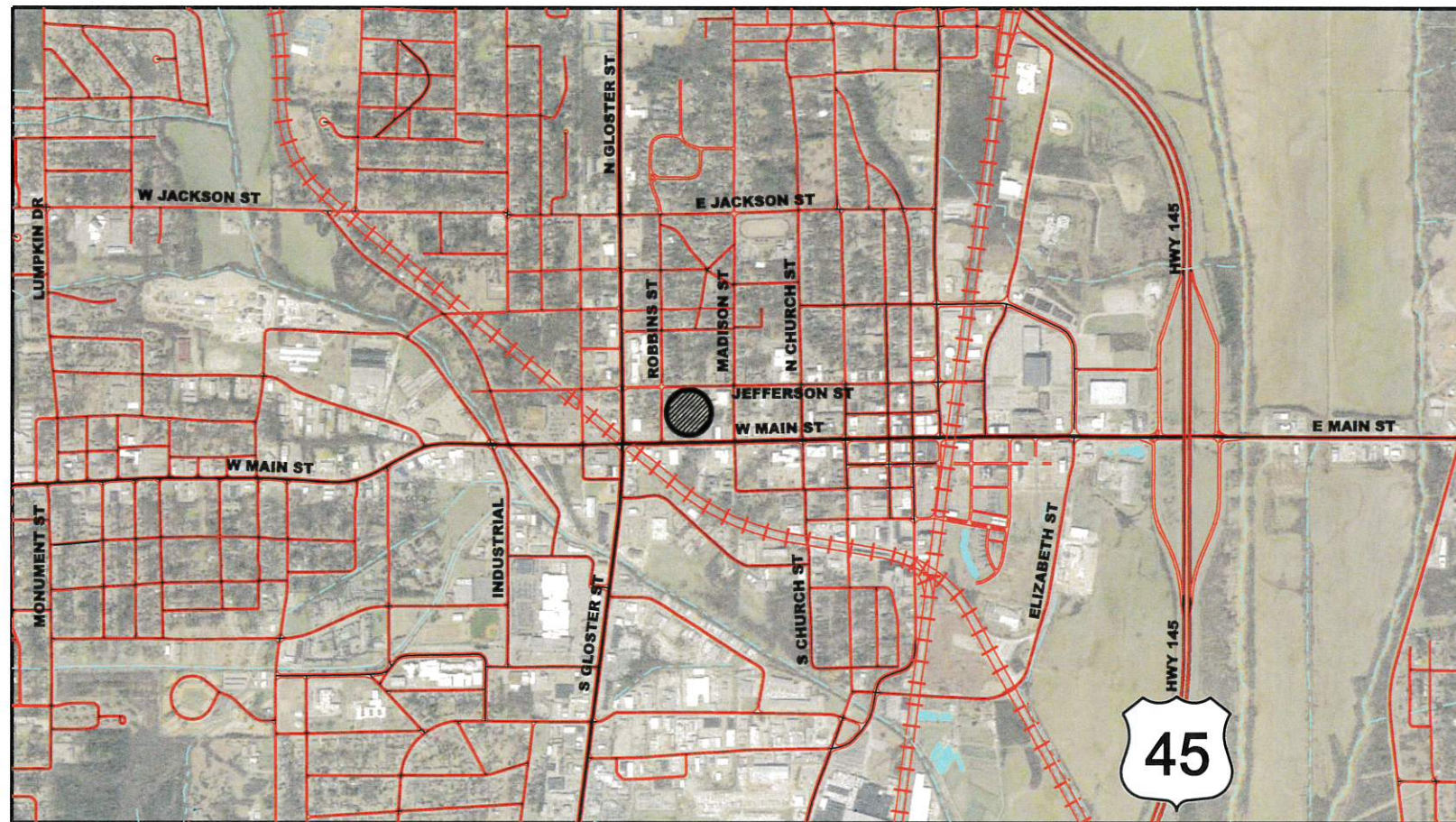


CONSTRUCTION PLANS OF CLARK PLACE DRAINAGE IMPROVEMENTS FOR THE CITY OF TUPELO LEE COUNTY, MISSISSIPPI

MUNICIPAL OFFICIALS

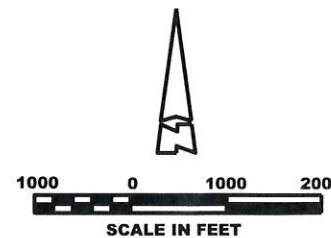
MAYOR	TODD JORDAN
CITY COUNCIL	CHAD MIMS
	LYNN BRYAN
	TRAVIS BEARD
	NETTIE DAVIS
	BUDDY PALMER
	JANET GASTON
	ROSIE JONES
WATER & SEWER SUPERINTENDENT	DAVID COLE
WATER & LIGHT DEPT DIRECTOR	JOHNNY TIMMONS
CITY ATTORNEY	BEN LOGAN

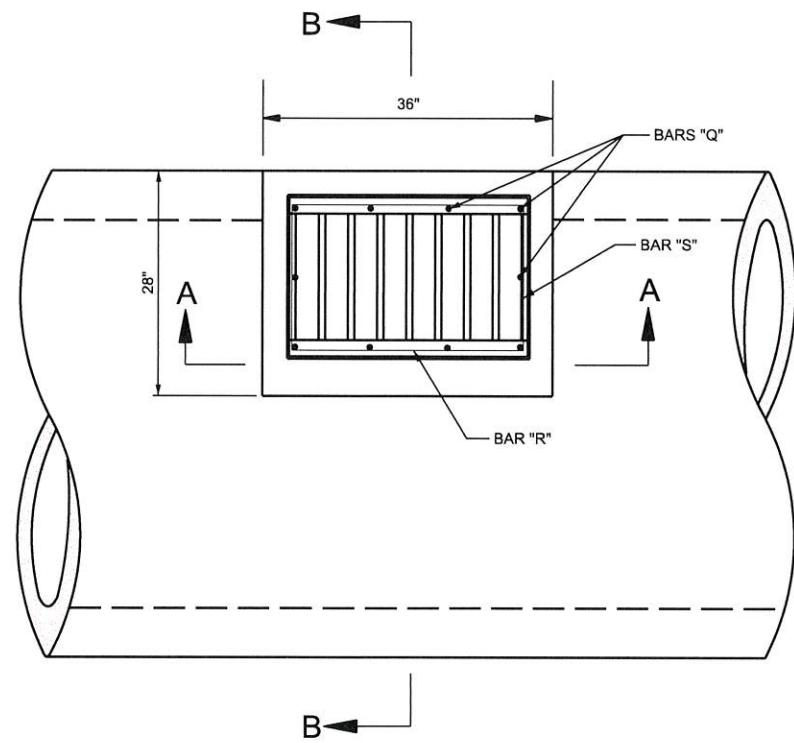


 PROJECT VICINITY

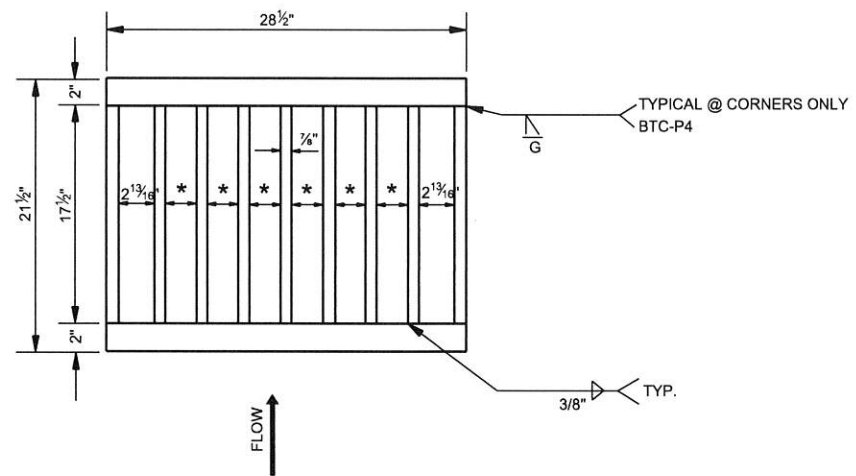
COOK COGGIN ENGINEERS, INC.
CONSULTANTS

JUNE 2022



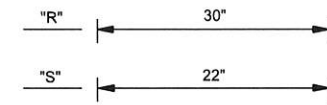


PLAN

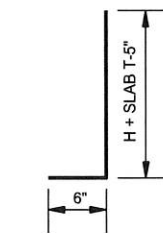


PLAN OF GRATE

* NOTE: TYPICAL SPACING 2 1/2"

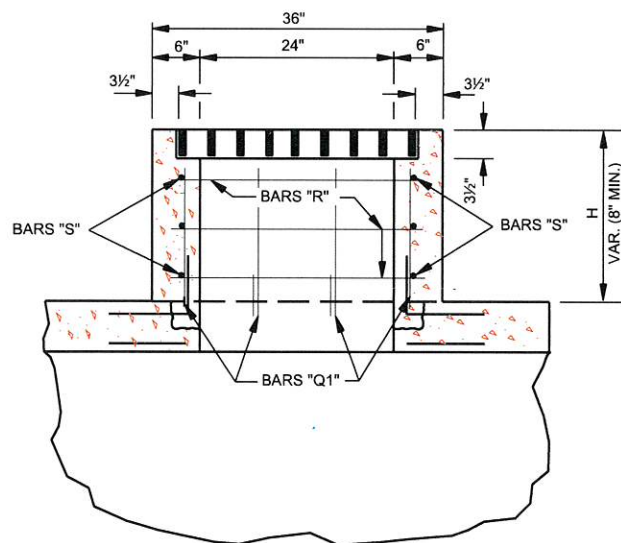


BARS "R" & "S"

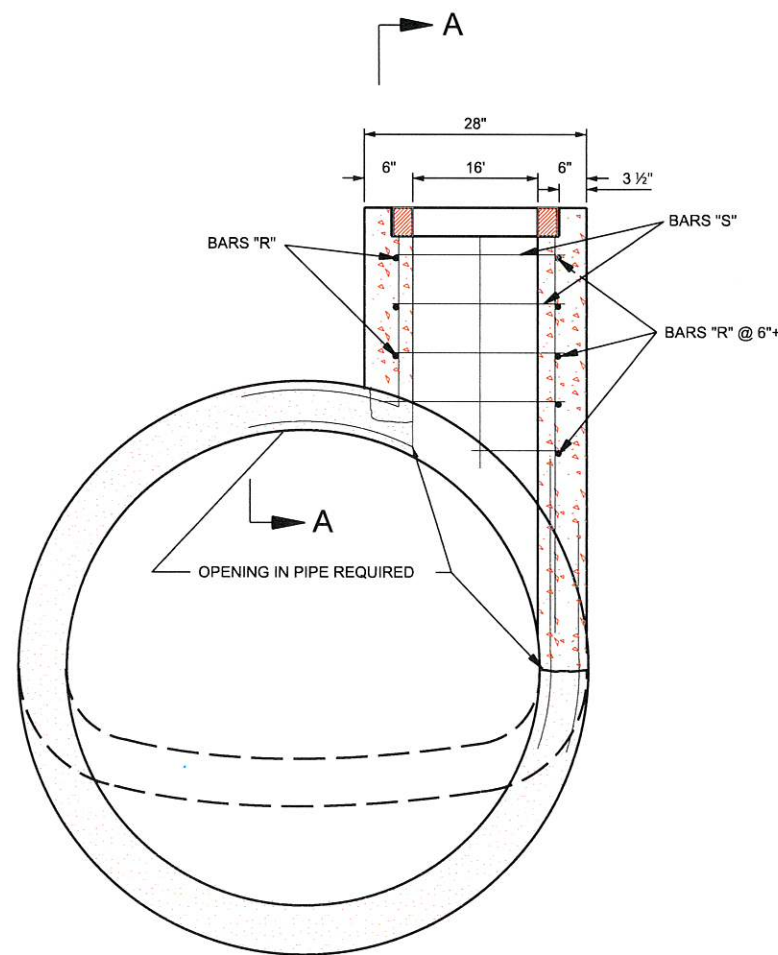


BARS "Q1" - "Q3"

BAR DETAILS



SECTION A-A



SECTION B-B

GENERAL NOTES:

1. QUANTITIES SHOWN WILL BE THE BASIS OF PAYMENT UNLESS AUTHORIZED MODIFICATIONS ARE MADE
2. INLET:
 - A. THE CONCRETE SHALL BE CLASS "B".
 - B. THE REINFORCEMENT SHALL BE #4 BARS SPACED A MAXIMUM OF 12" ON CENTER BOTH WAYS WITH A MINIMUM CLEARANCE OF 1" TO THE INSIDE OF THE INLET WALLS.
 - C. COST OF REINFORCEMENT TO BE ABSORBED. NO SEPARATE PAY.
3. GRATE:
 - A. COST OF GRATES TO BE ABSORBED. NO SEPARATE PAY.

THIS DOCUMENT, AND THE IDEAS AND DESIGNS INCORPORATED HEREIN, AS AN INSTRUMENT OF PROFESSIONAL SERVICE, IS THE PROPERTY OF COOK COGGIN ENGINEERS, INC. AND IS NOT TO BE USED, IN WHOLE OR IN PART, FOR ANY OTHER PROJECT WITHOUT WRITTEN AUTHORIZATION.

ENG JMW
DGN KS
CAD LKJ

CCCE
COOK-COGGIN ENGINEERS, INC
703 CROSSOVER RD. TUPELO, MS. 38801

REV	DESCRIPTION	DATE
x	x	x

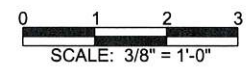
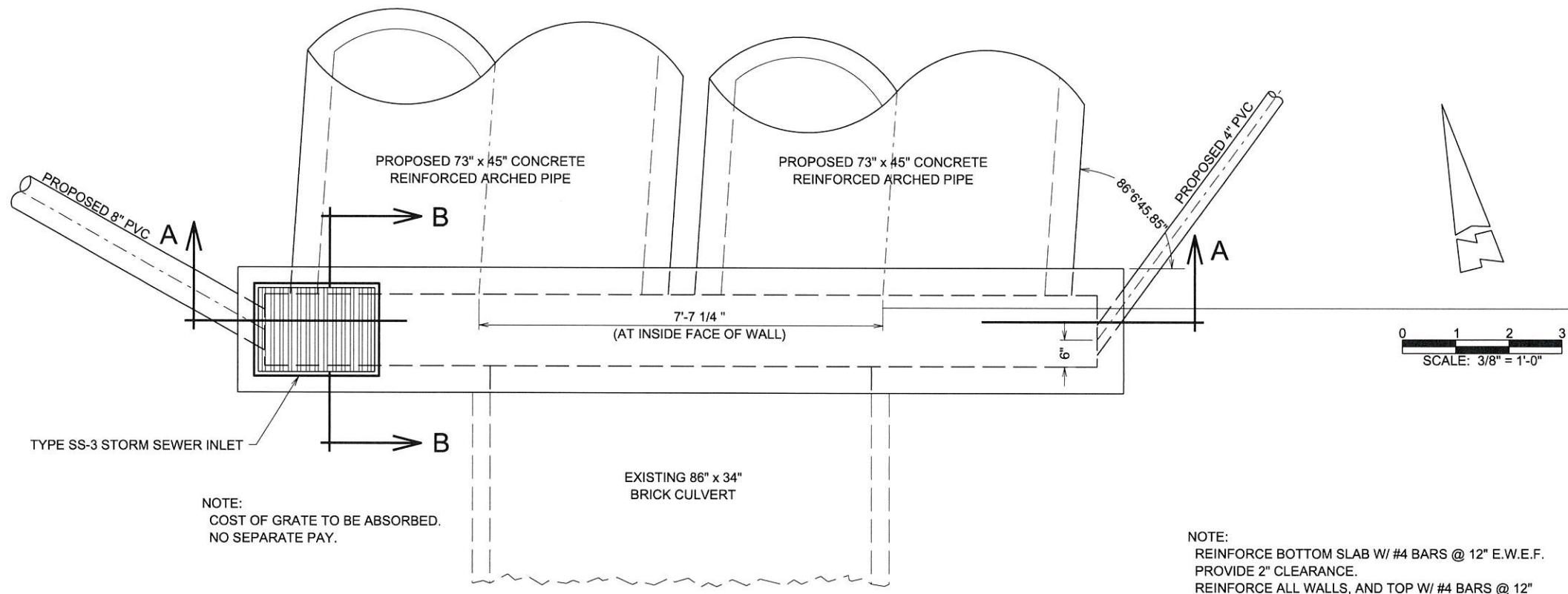
PROJECT NO.
3-08658-11C

PROJECT NAME
**CLARK PLACE
DRAINAGE IMPROVEMENTS
TUPELO PUBLIC WORKS DEPT**

TITLE
**TYPE I INLET
(MODIFIED)**

DATE
06-22
REVISION

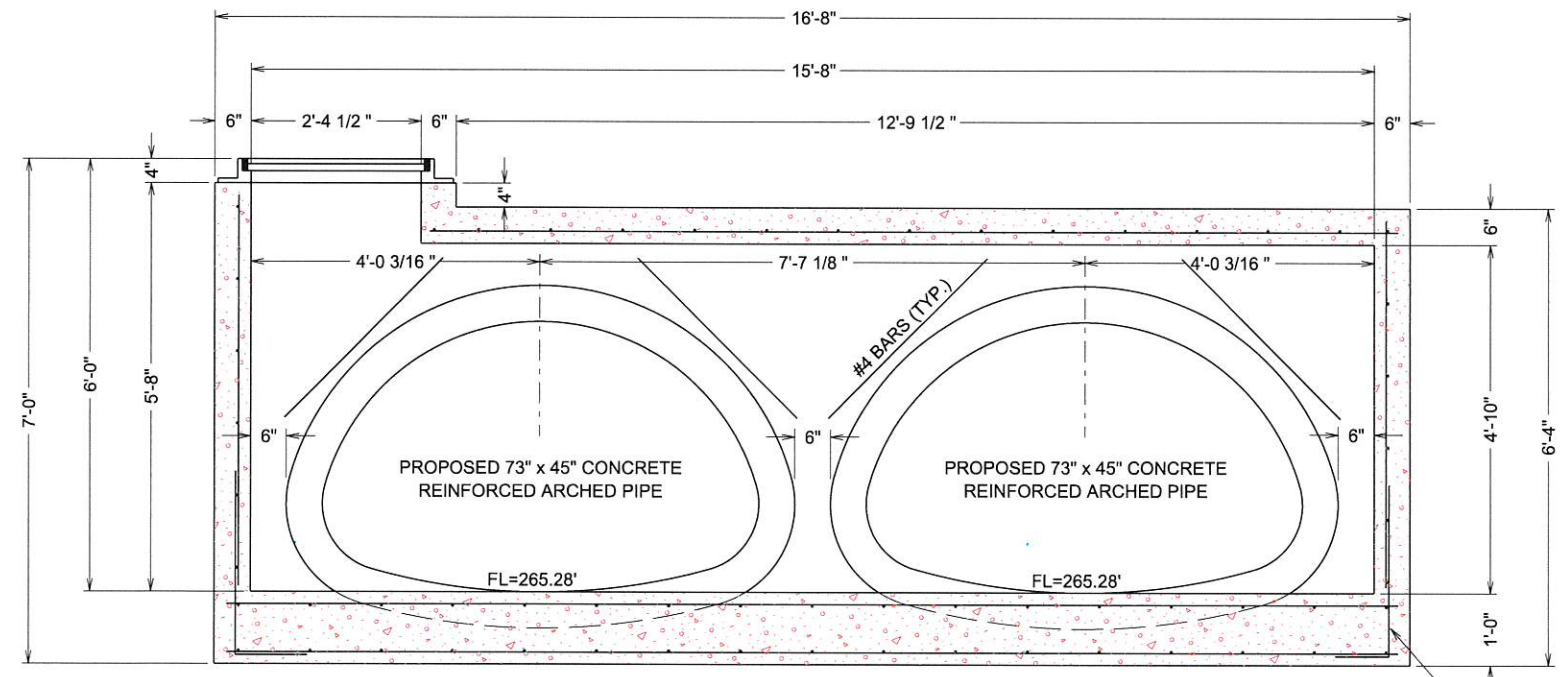
DRAWING NO.
4



NOTE:
COST OF GRATE TO BE ABSORBED.
NO SEPARATE PAY.

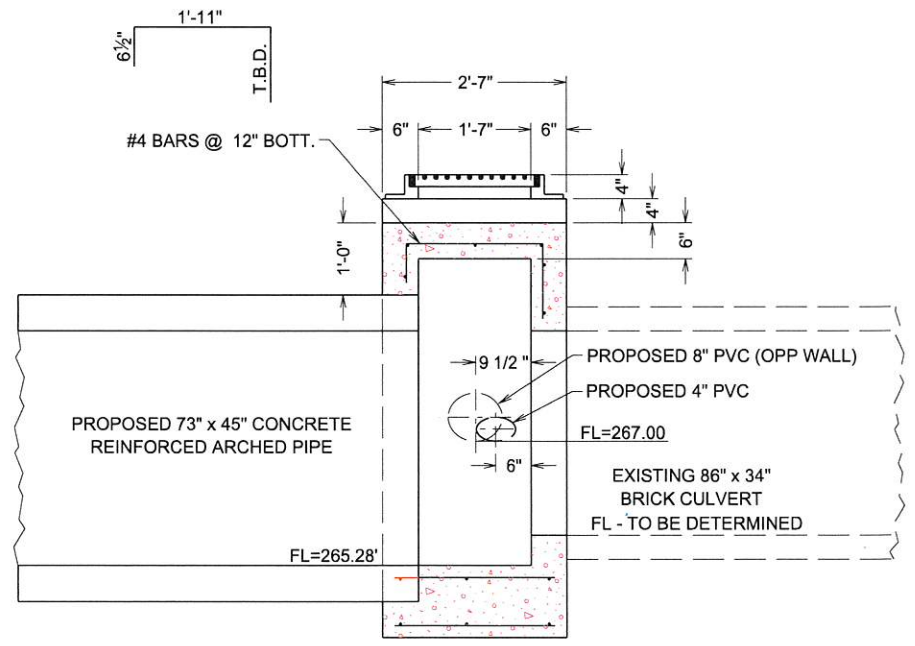
NOTE:
REINFORCE BOTTOM SLAB W/ #4 BARS @ 12\"/>

PLAN VIEW



3 - #4 BARS @ END WALLS
AND @ 12\"/>

TYPICAL SECTION A-A



TYPICAL SECTION B-B

THIS DOCUMENT, AND THE IDEAS AND
DESIGNS INCORPORATED HEREIN, AS
AN INSTRUMENT OF PROFESSIONAL
SERVICE, IS THE PROPERTY OF COOK
COGGIN ENG. AND IS NOT TO BE USED,
IN WHOLE OR IN PART, FOR ANY
OTHER PROJECT WITHOUT WRITTEN
AUTHORIZATION.

ENG JMW
DGN KS
CAD LKJ



REV	DESCRIPTION	DATE
x	x	x

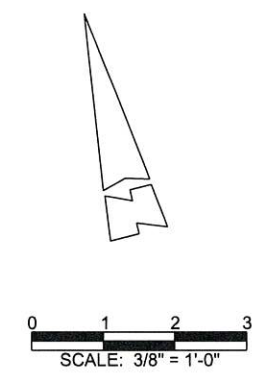
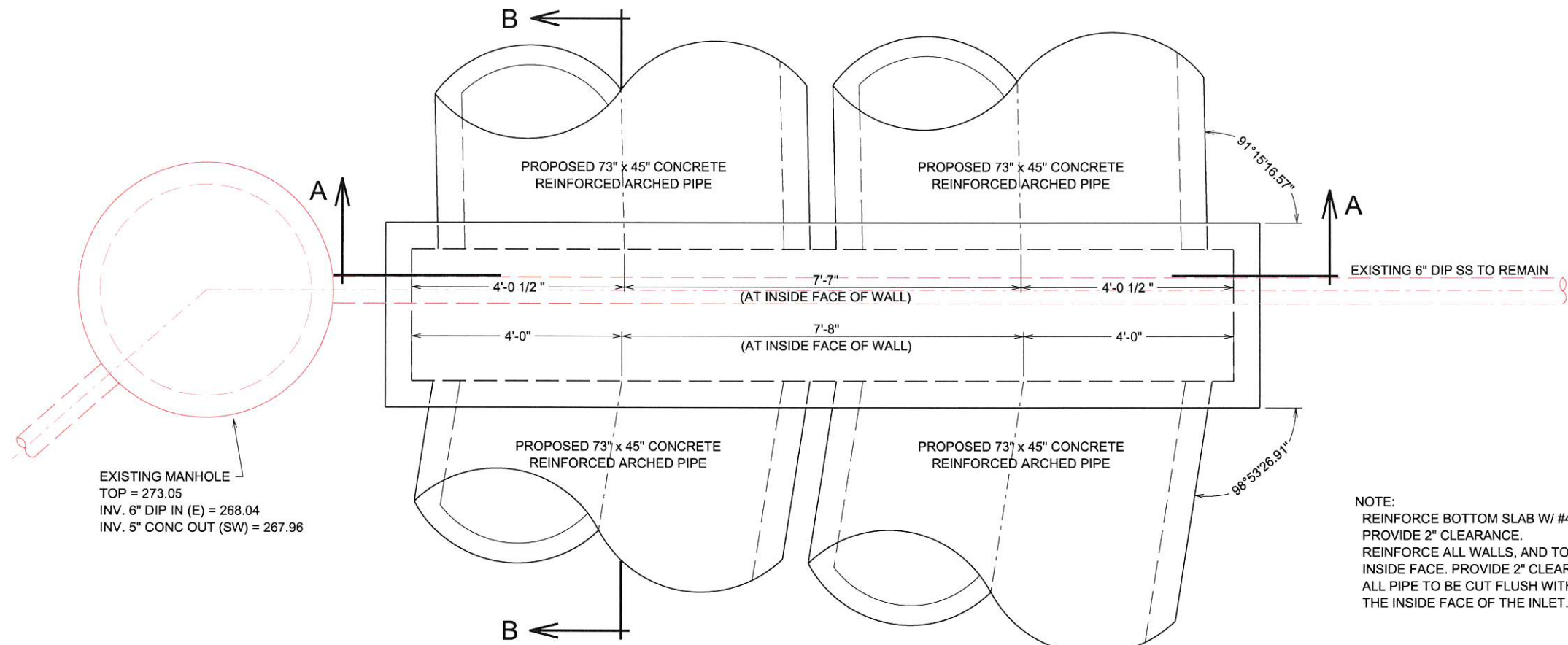
PROJECT NO.
3-08658-11C

PROJECT NAME
**CLARK PLACE
DRAINAGE IMPROVEMENTS
TUPELO PUBLIC WORKS DEPT**

TITLE
**INLET #1
PLAN AND TYPICAL SECTIONS**

DATE
06-22
REVISION

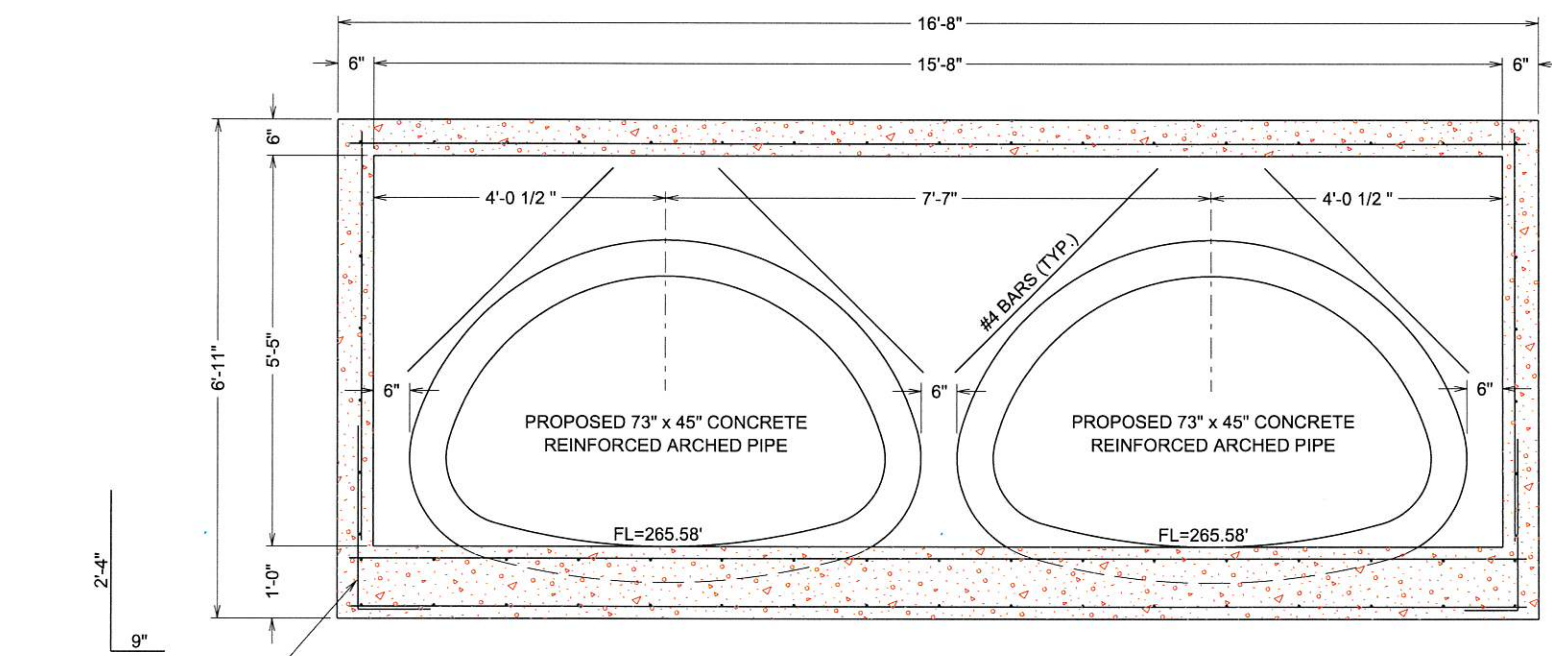
DRAWING NO.
5



NOTE:
 REINFORCE BOTTOM SLAB W/ #4 BARS @ 12" E.W.E.F.
 PROVIDE 2" CLEARANCE.
 REINFORCE ALL WALLS, AND TOP W/ #4 BARS @ 12"
 INSIDE FACE. PROVIDE 2" CLEARANCE.
 ALL PIPE TO BE CUT FLUSH WITH
 THE INSIDE FACE OF THE INLET.

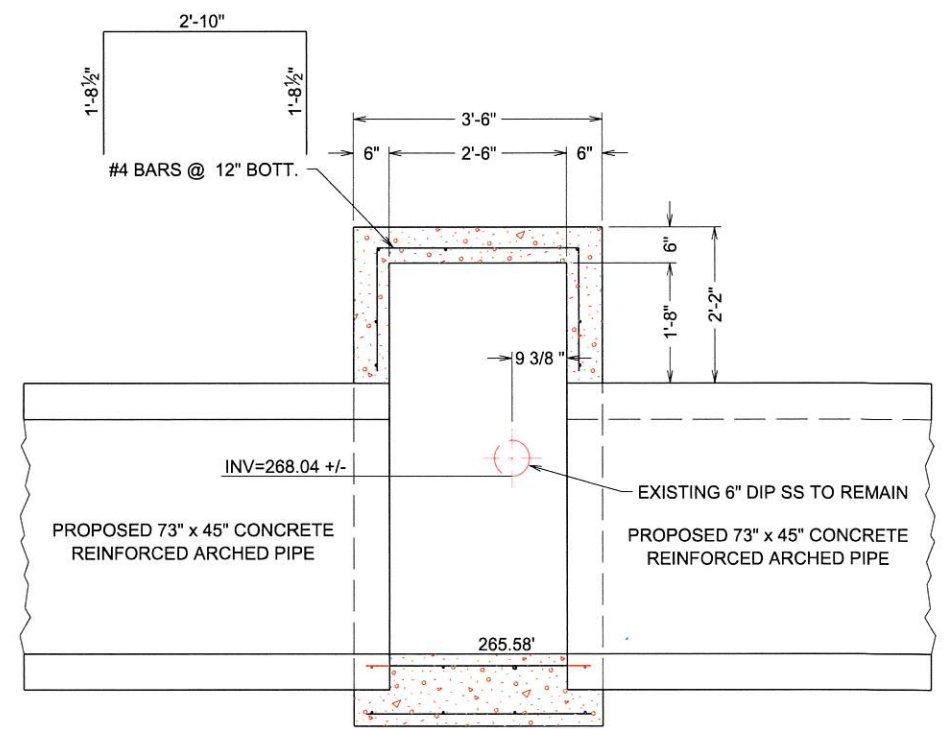
EXISTING MANHOLE
 TOP = 273.05
 INV. 6" DIP IN (E) = 268.04
 INV. 5" CONC OUT (SW) = 267.96

PLAN VIEW



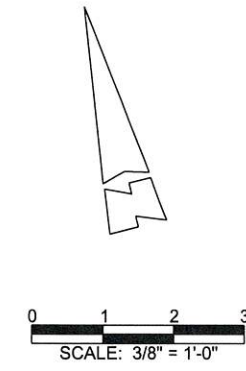
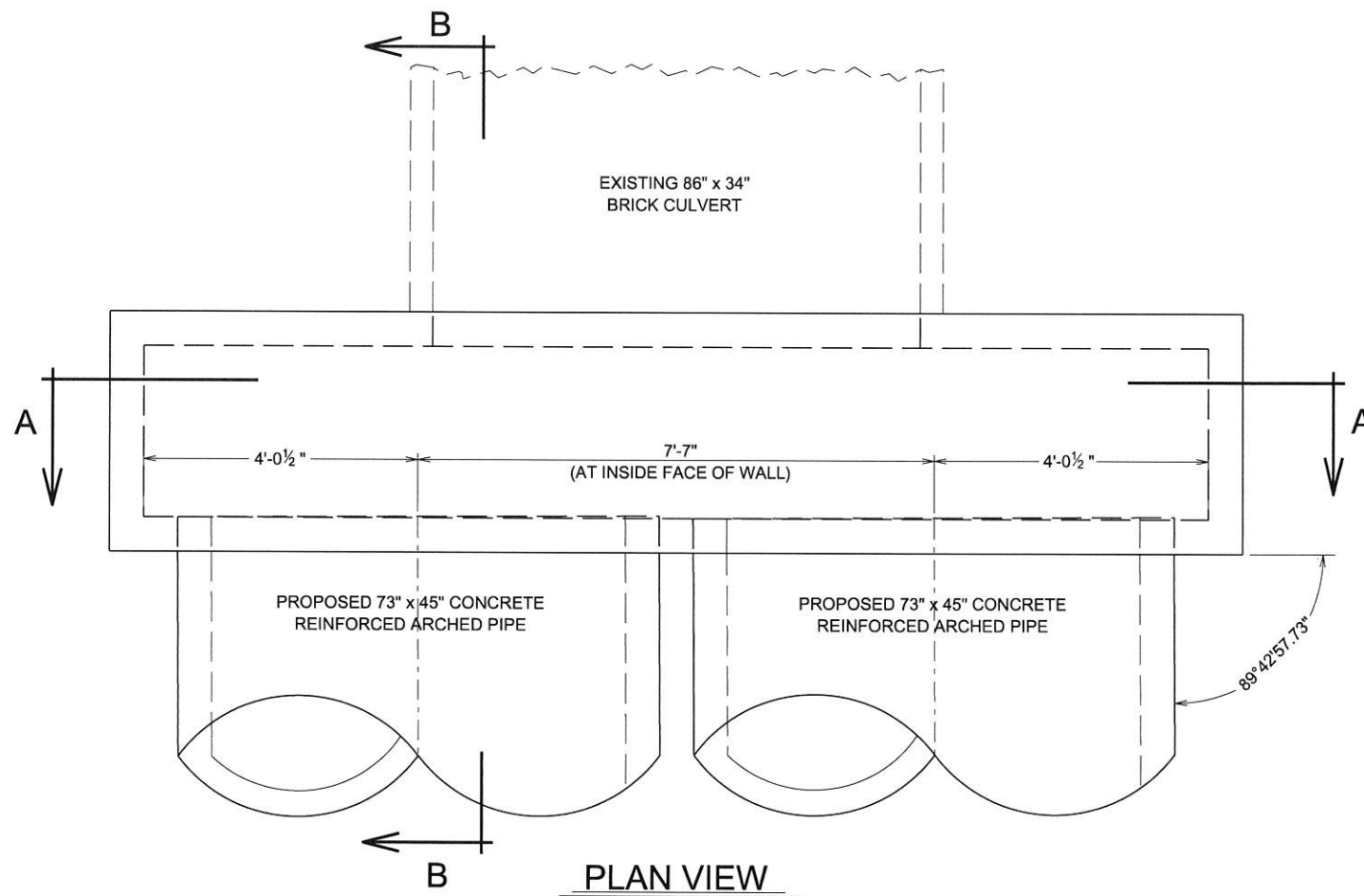
3 - #4 BARS @ END WALLS
 AND @ 12" EACH SIDE OF
 EXISTING BRICK CULVERT

TYPICAL SECTION A-A

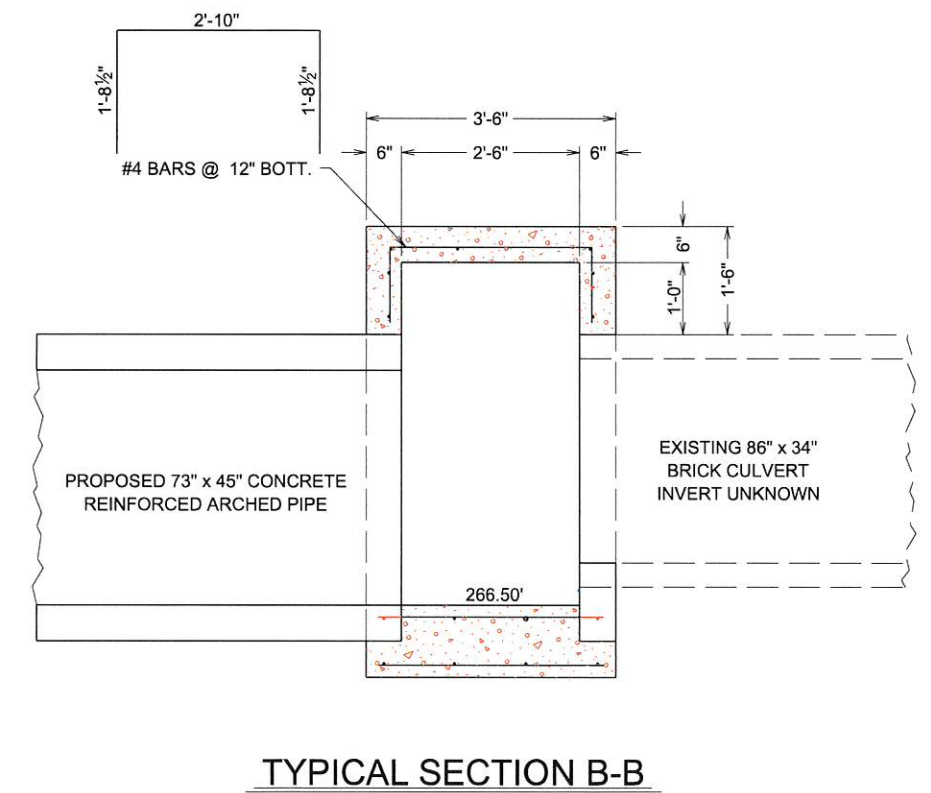
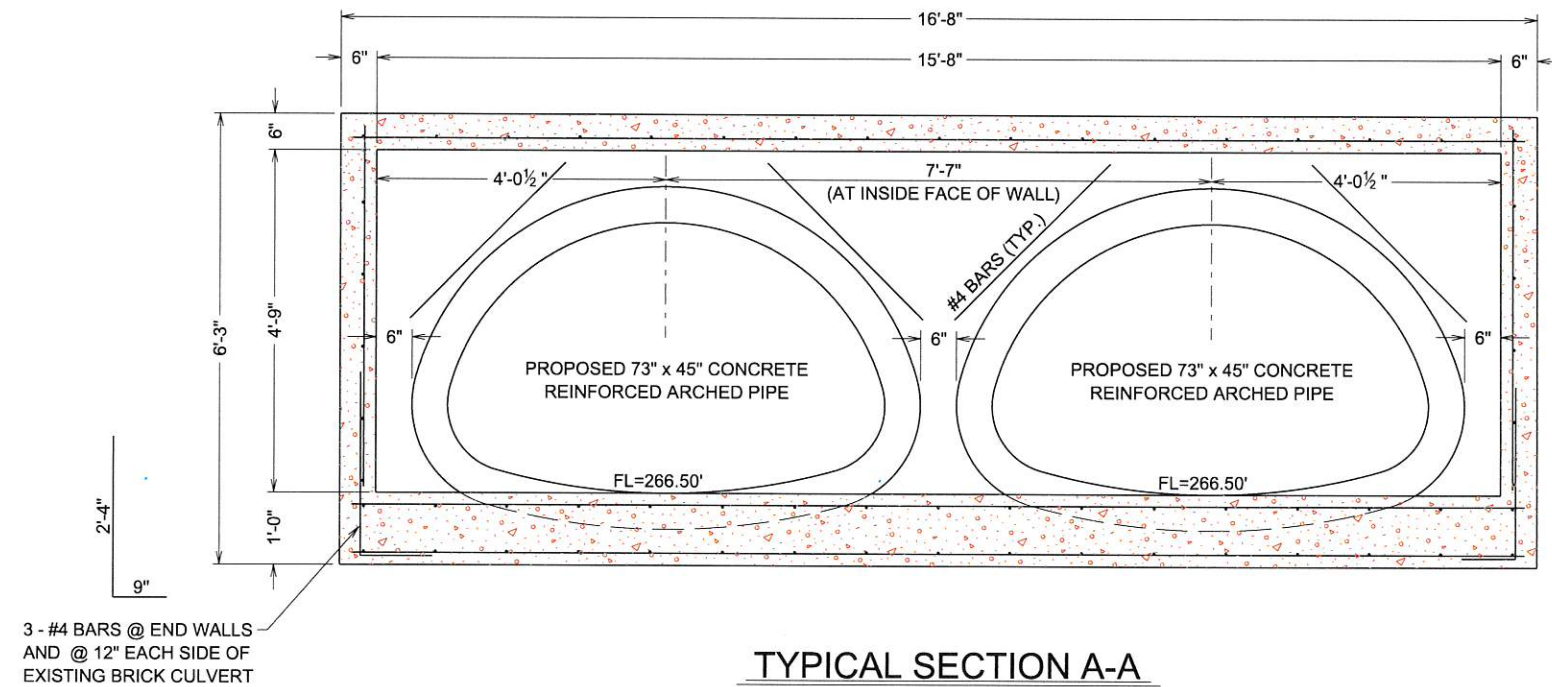


TYPICAL SECTION B-B

THIS DOCUMENT, AND THE IDEAS AND DESIGNS INCORPORATED HEREIN, AS AN INSTRUMENT OF PROFESSIONAL SERVICE, IS THE PROPERTY OF COOK COGGIN ENGINEERS, INC. AND IS NOT TO BE USED, IN WHOLE OR IN PART, FOR ANY OTHER PROJECT WITHOUT WRITTEN AUTHORIZATION.	ENG	JMW	 COOK-COGGIN ENGINEERS, INC 703 CROSSOVER RD. TUPELO, MS. 38801	REV		DESCRIPTION		DATE		PROJECT NO.		PROJECT NAME		TITLE		DATE		DRAWING NO.	
	DGN	KS		x	x				x		3-08658-11C		CLARK PLACE DRAINAGE IMPROVEMENTS TUPELO PUBLIC WORKS DEPT		JUNCTION BOX #2 PLAN AND TYPICAL SECTIONS		06-22		6
	CAD	LKJ														REVISION			



NOTE:
 REINFORCE BOTTOM SLAB W/ #4 BARS @ 12" E.W.E.F.
 PROVIDE 2" CLEARANCE.
 REINFORCE ALL WALLS, AND TOP W/ #4 BARS @ 12"
 INSIDE FACE. PROVIDE 2" CLEARANCE.



THIS DOCUMENT, AND THE IDEAS AND DESIGNS INCORPORATED HEREIN, AS AN INSTRUMENT OF PROFESSIONAL SERVICE, IS THE PROPERTY OF COOK COGGIN ENG. AND IS NOT TO BE USED, IN WHOLE OR IN PART, FOR ANY OTHER PROJECT WITHOUT WRITTEN AUTHORIZATION.

ENG	JMW	CCCE COOK-COGGIN ENGINEERS, INC 703 CROSSOVER RD. TUPELO, MS. 38801	REV		DESCRIPTION	DATE	PROJECT NO.	PROJECT NAME	TITLE	DATE	DRAWING NO.
DGN	KS		x	x			3-08658-11C	CLARK PLACE DRAINAGE IMPROVEMENTS TUPELO PUBLIC WORKS DEPT	JUNCTION BOX #4 PLAN AND TYPICAL SECTIONS	06-22	8
CAD	LKJ									REVISION	

REV		DESCRIPTION	DATE	PROJECT NO.	PROJECT NAME	TITLE	DATE	DRAWING NO.
x	x			3-08658-11C	CLARK PLACE DRAINAGE IMPROVEMENTS TUPELO PUBLIC WORKS DEPT	JUNCTION BOX #4 PLAN AND TYPICAL SECTIONS	06-22	8

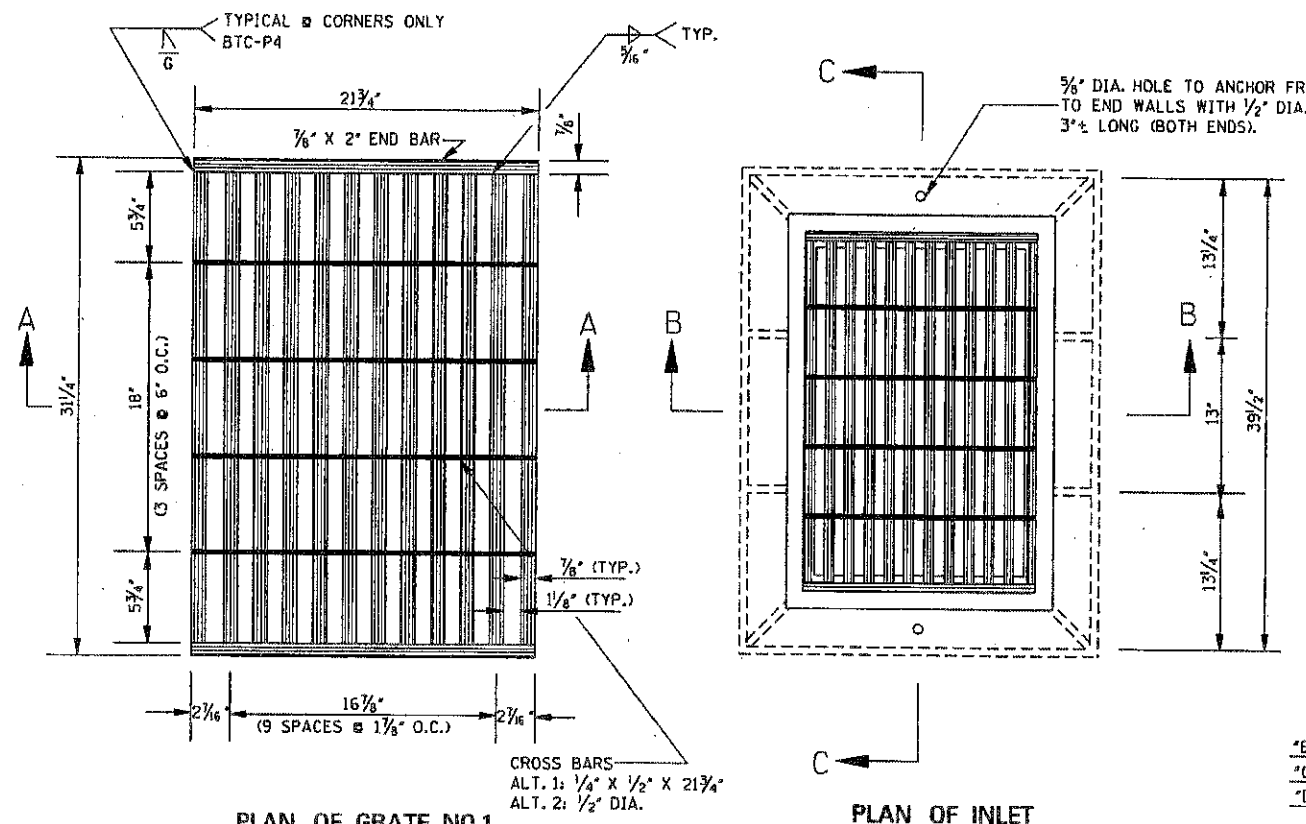
PROJECT NO. **3-08658-11C**

PROJECT NAME **CLARK PLACE DRAINAGE IMPROVEMENTS TUPELO PUBLIC WORKS DEPT**

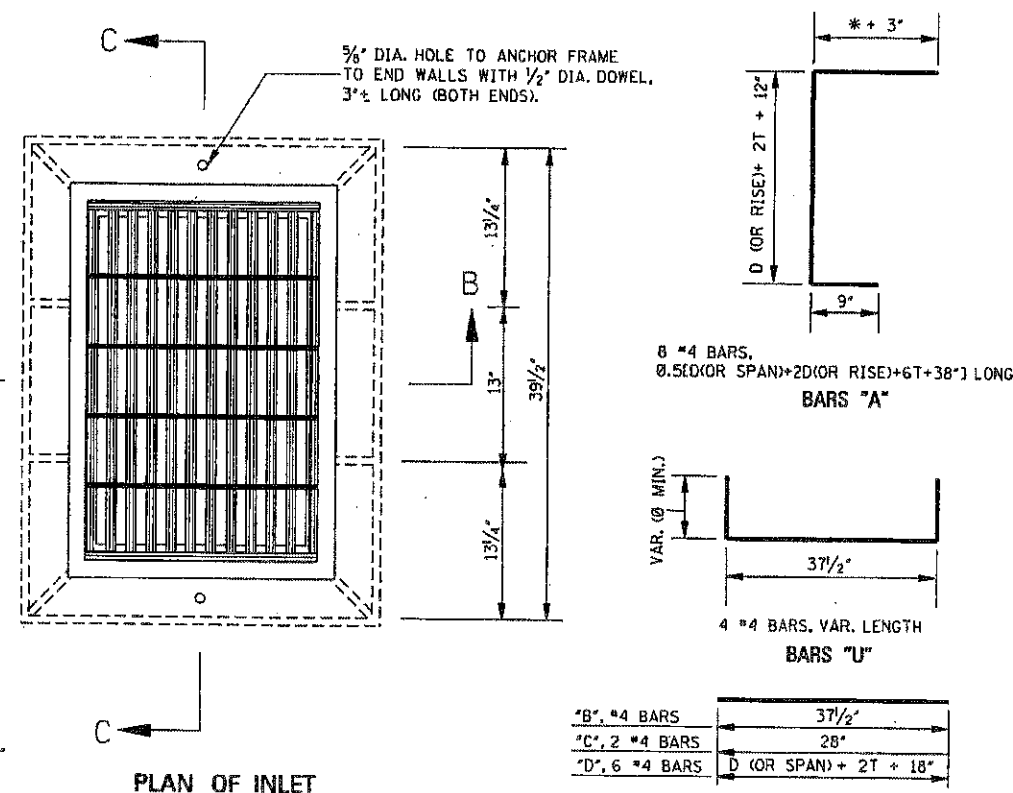
TITLE **JUNCTION BOX #4 PLAN AND TYPICAL SECTIONS**

DATE **06-22**
REVISION

DRAWING NO. **8**



PLAN OF GRATE NO.1
NOTE: FOR OTHER GRATE DETAILS SEE SHEET IG-2.

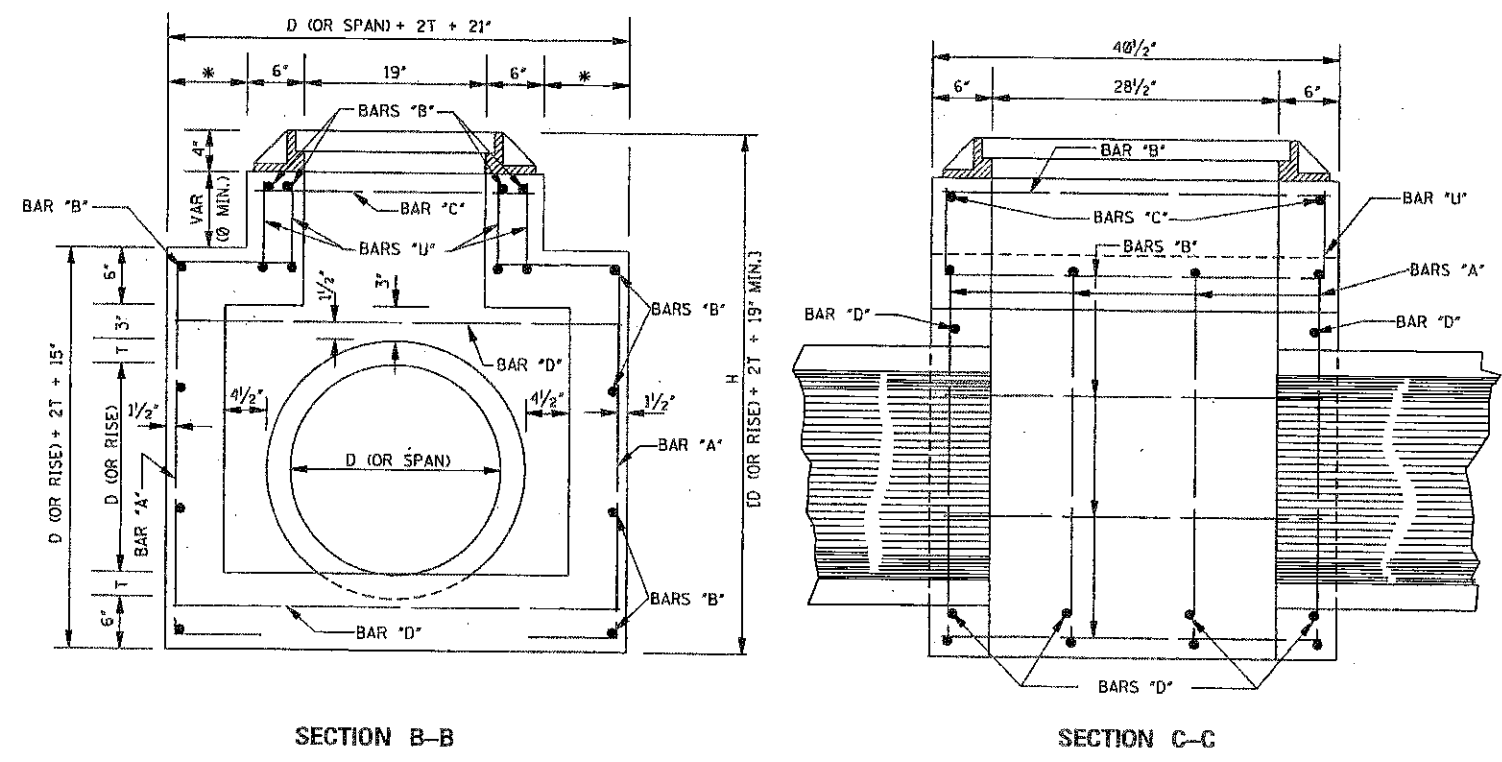
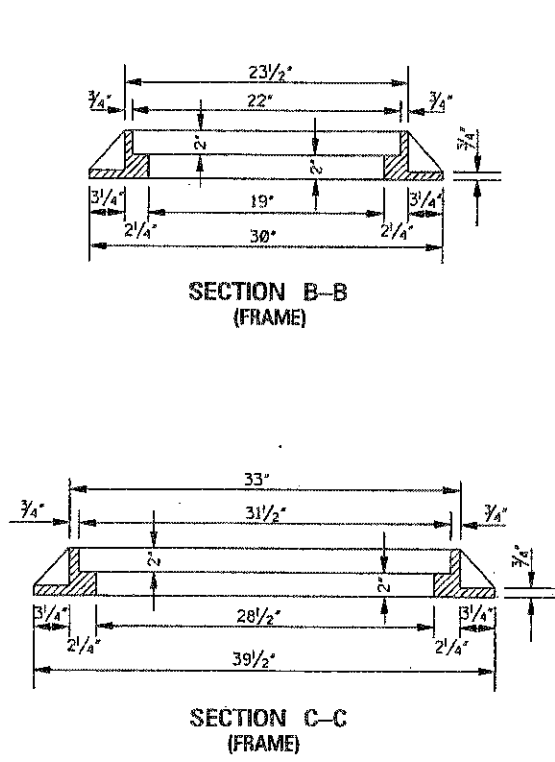


*NOTE:
 $\frac{* [D (OR SPAN) + 2T - 10\"]}{2}$

PIPE SIZE	MIN. DEPTH TO F.L.	MIN. DEPTH INLET		PIPE OPENING DEDUCTION (yd ³)	T	BARS/SIZES							
		CONC. (yd ³)	STEEL (lbs)			'A'		'B'		'C'		'D'	
						NO. LGTH.	NO. LGTH.	NO. LGTH.	NO. LGTH.	NO. LGTH.	NO. LGTH.		
18"	2.792'	0.869	76	0.053	2 1/2'	8 @ 4'-5 1/2"	12 @ 3'-1 1/2"	2 @ 2'-4"	6 @ 3'-5"	4 @ 3'-9 1/2"			
24"	3.334'	1.117	87	0.091	3'	8 @ 5'-4"	14 @ 3'-1 1/2"	2 @ 2'-4"	6 @ 4'-0"	4 @ 3'-9 1/2"			
30"	3.875'	1.385	94	0.138	3 1/2'	8 @ 6'-2 1/2"	14 @ 3'-1 1/2"	2 @ 2'-4"	6 @ 4'-7"	4 @ 3'-9 1/2"			
36"	4.417'	1.671	105	0.196	4'	8 @ 7'-1"	16 @ 3'-1 1/2"	2 @ 2'-4"	6 @ 5'-2"	4 @ 3'-9 1/2"			
42"	4.959'	1.978	116	0.263	4 1/2'	8 @ 7'-11 1/2"	18 @ 3'-1 1/2"	2 @ 2'-4"	6 @ 5'-9"	4 @ 3'-9 1/2"			
48"	5.500'	2.305	123	0.340	5'	8 @ 8'-10"	18 @ 3'-1 1/2"	2 @ 2'-4"	6 @ 6'-4"	4 @ 3'-9 1/2"			
54"	6.042'	2.650	135	0.427	5 1/2'	8 @ 9'-8 1/2"	20 @ 3'-1 1/2"	2 @ 2'-4"	6 @ 6'-11"	4 @ 3'-9 1/2"			
60"	6.583'	3.016	146	0.524	6'	8 @ 10'-7"	22 @ 3'-1 1/2"	2 @ 2'-4"	6 @ 7'-6"	4 @ 3'-9 1/2"			
66"	7.125'	3.402	153	0.630	6 1/2'	8 @ 11'-5 1/2"	22 @ 3'-1 1/2"	2 @ 2'-4"	6 @ 8'-1"	4 @ 3'-9 1/2"			
72"	7.667'	3.806	164	0.747	7'	8 @ 12'-4"	24 @ 3'-1 1/2"	2 @ 2'-4"	6 @ 8'-8"	4 @ 3'-9 1/2"			
22" X 13"	2.417'	0.855	76	0.053	2 1/2'	8 @ 4'-3"	12 @ 3'-1 1/2"	2 @ 2'-4"	6 @ 3'-9"	4 @ 3'-9 1/2"			
29" X 18"	2.833'	1.085	83	0.087	3'	8 @ 5'-0 1/4"	12 @ 3'-1 1/2"	2 @ 2'-4"	6 @ 4'-4 1/2"	4 @ 3'-9 1/2"			
36" X 23"	3.250'	1.358	94	0.129	3 1/2'	8 @ 5'-10"	14 @ 3'-1 1/2"	2 @ 2'-4"	6 @ 5'-1"	4 @ 3'-9 1/2"			
44" X 27"	3.635'	1.631	101	0.185	4'	8 @ 6'-7 1/2"	14 @ 3'-1 1/2"	2 @ 2'-4"	6 @ 5'-10"	4 @ 3'-9 1/2"			
51" X 31"	4.068'	1.942	113	0.245	4 1/2'	8 @ 7'-5 1/2"	16 @ 3'-1 1/2"	2 @ 2'-4"	6 @ 6'-6"	4 @ 3'-9 1/2"			
58" X 36"	4.500'	2.269	120	0.318	5'	8 @ 8'-3"	16 @ 3'-1 1/2"	2 @ 2'-4"	6 @ 7'-2 1/2"	4 @ 3'-9 1/2"			
65" X 40"	4.875'	2.575	130	0.394	5 1/2'	8 @ 9'-0"	18 @ 3'-1 1/2"	2 @ 2'-4"	6 @ 7'-10"	4 @ 3'-9 1/2"			
73" X 45"	5.333'	2.966	139	0.489	6'	8 @ 9'-10 1/2"	18 @ 3'-1 1/2"	2 @ 2'-4"	6 @ 8'-7"	4 @ 3'-9 1/2"			
80" X 54"	6.167'	3.765	156	0.688	7'	8 @ 11'-6"	20 @ 3'-1 1/2"	2 @ 2'-4"	6 @ 10'-0"	4 @ 3'-9 1/2"			

- NOTES:
- ONE (1) PIPE OPENING HAS BEEN DEDUCTED FROM THE STRUCTURE.
 - FOR EACH ADDITIONAL FOOT OF INLET HEIGHT, ADD 0.184 yd³ CLASS "B" CONCRETE AND 17 lbs REINFORCING STEEL.
 - 4 BARS "B" AND 2 BARS "C" REQUIRED PER EACH ADDITIONAL FOOT OF INLET HEIGHT.
 - WEIGHT OF FRAME CASTING = 244 lbs.
WEIGHT OF GRATE = SEE SHEET IG-2.

- GENERAL NOTES:
- QUANTITIES SHOWN WILL BE THE BASIS OF PAYMENT UNLESS AUTHORIZED MODIFICATIONS ARE MADE.
 - CONCRETE SHALL BE CLASS "B" CONCRETE AND REINFORCING STEEL SHALL BE DEFORMED BARS.
 - THE CONTRACTOR HAS THE OPTION TO PROVIDE GRATE NO. 1 OR GRATE NO. 2 AS SHOWN ON SHEET IG-2.
 - FRAME TO BE GRAY IRON CASTING, (AASHTO M 105, CLASS 30).

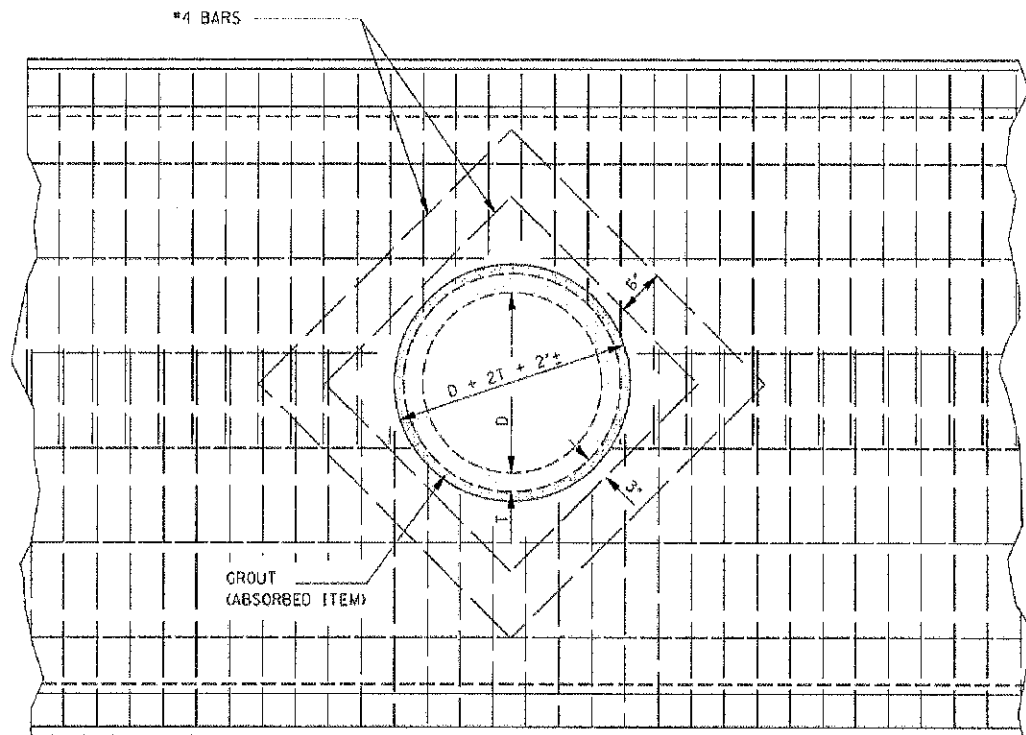


MISSISSIPPI DEPARTMENT OF TRANSPORTATION
ROADWAY DESIGN DIVISION
STANDARD PLAN

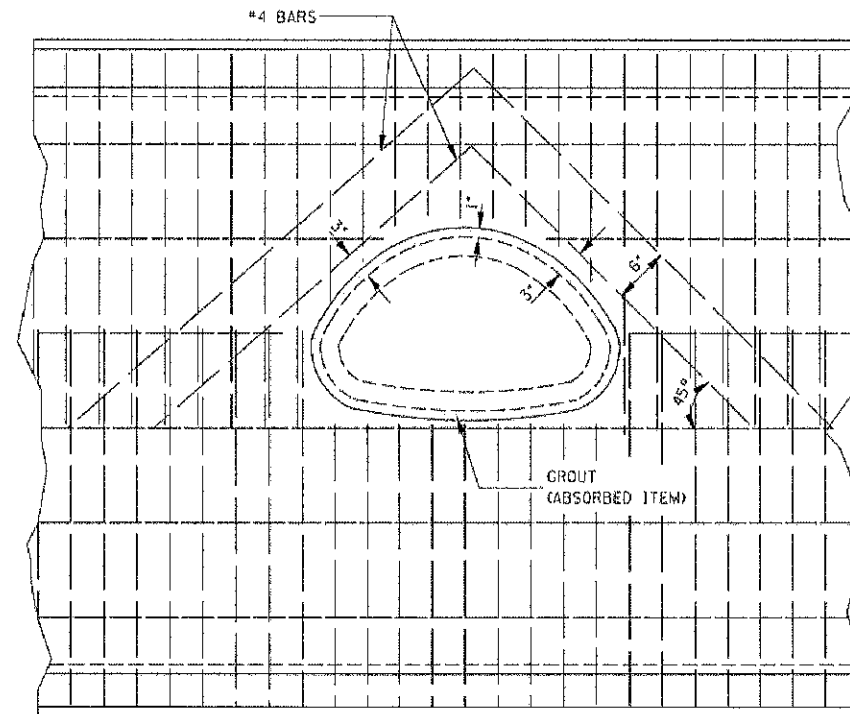
**STORM SEWER INLET
TYPE SS-3**

WORKING NUMBER: SS-3
SHEET NUMBER: 6323

ISSUE DATE: OCTOBER 1, 1998



ELEVATION SHOWING CIRCULAR PIPE
STUBBED INTO BOX CULVERT BARREL OR WING-WALL



ELEVATION SHOWING ARCH PIPE STUBBED
INTO BOX CULVERT BARREL OR WING-WALL

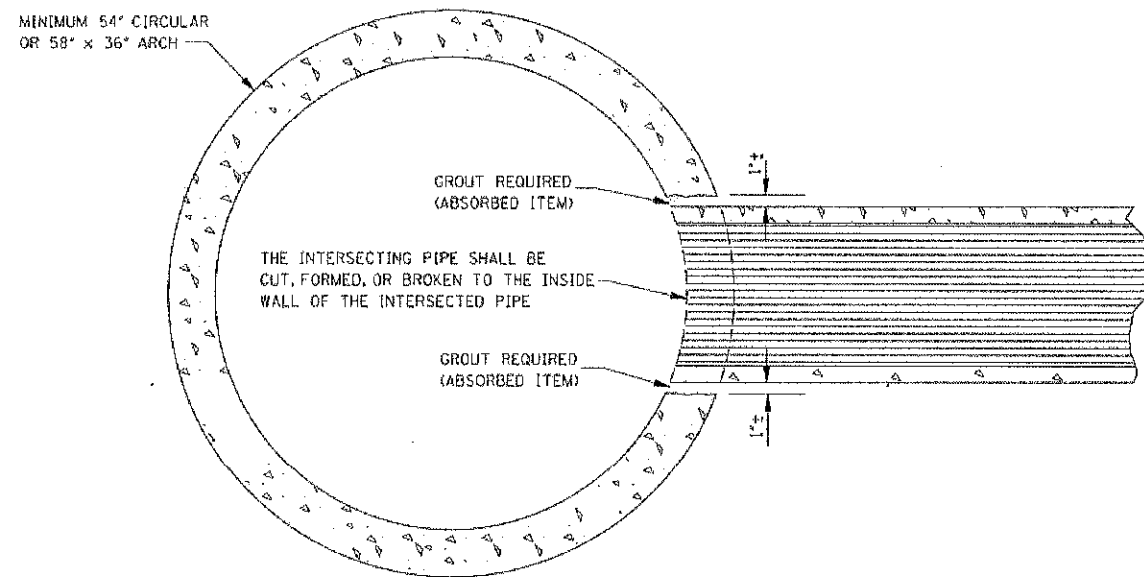
BAR LIST		
PIPE SIZE	#4 BARS	
	NO.	LGTH.
18"	4	2'-6"
	4	3'-6"
24"	4	3'-1"
	4	4'-1"
30"	4	3'-8 1/2"
	4	4'-8 1/2"
22" x 13"	2	3'-10"
	2	4'-9"
29" x 18"	2	4'-6"
	1	5'-4"
	2	4'-6"
	1	6'-3"

NOTES:

1. A 24" DIAMETER PIPE IS THE MAXIMUM SIZE THAT MAY BE STUBBED INTO A 54" DIAMETER PIPE.
2. A 60" DIAMETER PIPE IS THE MINIMUM SIZE THAT A 30" DIAMETER PIPE MAY BE STUBBED INTO.

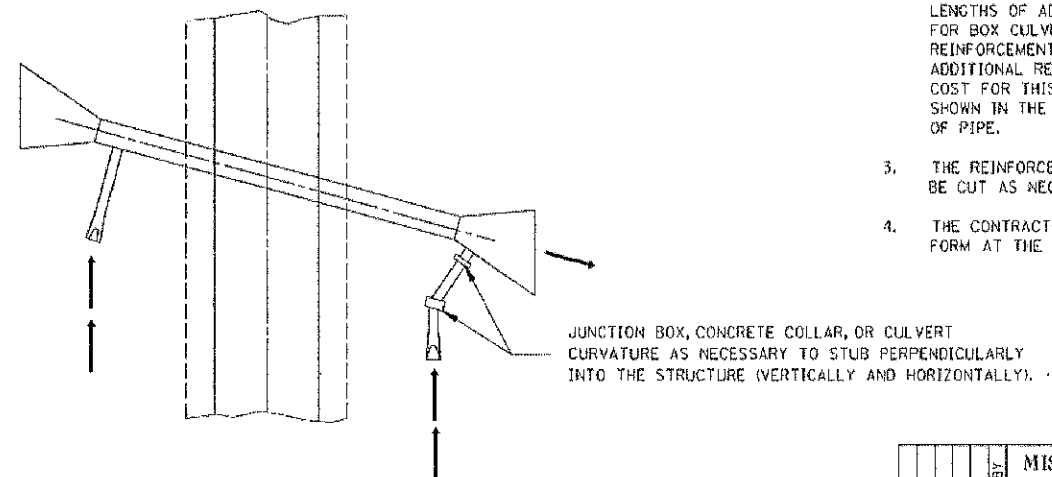
GENERAL NOTES:

1. PAYMENT FOR WORK AND MATERIALS FOR STUBBING A PIPE CULVERT INTO A BOX CULVERT OR CONCRETE PIPE SHALL BE PAID FOR AS A BRANCH CONNECTION OF THE APPROPRIATE SIZE, TYPE AND DESCRIPTION.
2. THE TABLE ON THIS SHEET INDICATES THE NUMBER AND LENGTHS OF ADDITIONAL REINFORCING STEEL BARS REQUIRED FOR BOX CULVERTS CONSTRUCTED. FOR A DOUBLE ROW OF REINFORCEMENT, DOUBLE THE NUMBER OF BARS SHOWN. THE ADDITIONAL REINFORCING STEEL SHALL BE INCLUDED IN THE COST FOR THIS TYPE OF BRANCH CONNECTION. THE QUANTITIES SHOWN IN THE TABLE ARE FOR THE MOST COMMON SIZES OF PIPE.
3. THE REINFORCEMENT OF THE INTERSECTED BOX OR PIPE SHALL BE CUT AS NECESSARY TO ACCOMMODATE THE STUBBED PIPE.
4. THE CONTRACTOR MAY INSERT THE INTERSECTING PIPE INTO THE FORM AT THE PROPER LOCATION IN LIEU OF FORMING BY BLOCKING OUT.




ELEVATION SHOWING PIPE CULVERT
STUBBED INTO CONCRETE PIPE CULVERT

NOTE: TYPICAL INSTALLATION FOR MEDIAN STUB TO CROSSING DRAIN WITH MINIMUM COVER.



TYPICAL PLAN OF BRANCH CONNECTION
TO BOX CULVERT WING-WALL

BY		MISSISSIPPI DEPARTMENT OF TRANSPORTATION ROADWAY DESIGN DIVISION STANDARD PLAN	
REVISION		BRANCH CONNECTIONS	
DATE		ISSUE DATE: AUGUST 01, 2017	



WORKING NUMBER
BC-1

SHEET NUMBER
6507