



PRELIMINARY LAYOUT

PROPOSED CONNECTOR (150' RIGHT-OF-WAY)
 BARNES CROSSING EXT. TO NORTH GLOSTER STREET
 TUPELO, MS

REVISIONS	
NO.	DATE

DWN. BY
 CKD. BY
 SCALE GRAPHIC
 DATE APRIL 2024

PROJECT
T24-110
 DWG. NO.
PL-1

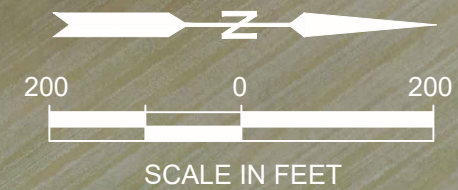
ESI
 ENGINEERING SOLUTIONS INC
 1324 NORTH VETERANS BLVD., TUPELO MS 38804
 PHONE 662.840.9063 FAX 662.840.9064 www.esi-ms.com



PRELIMINARY LAYOUT
PROPOSED CONNECTOR (150' RIGHT-OF-WAY)
BARNES CROSSING EXT. TO NORTH GLOSTER STREET
TUPELO, MS

REVISIONS	
NO.	DATE

DWN. BY
 CKD. BY
 SCALE GRAPHIC
 DATE APRIL 2024

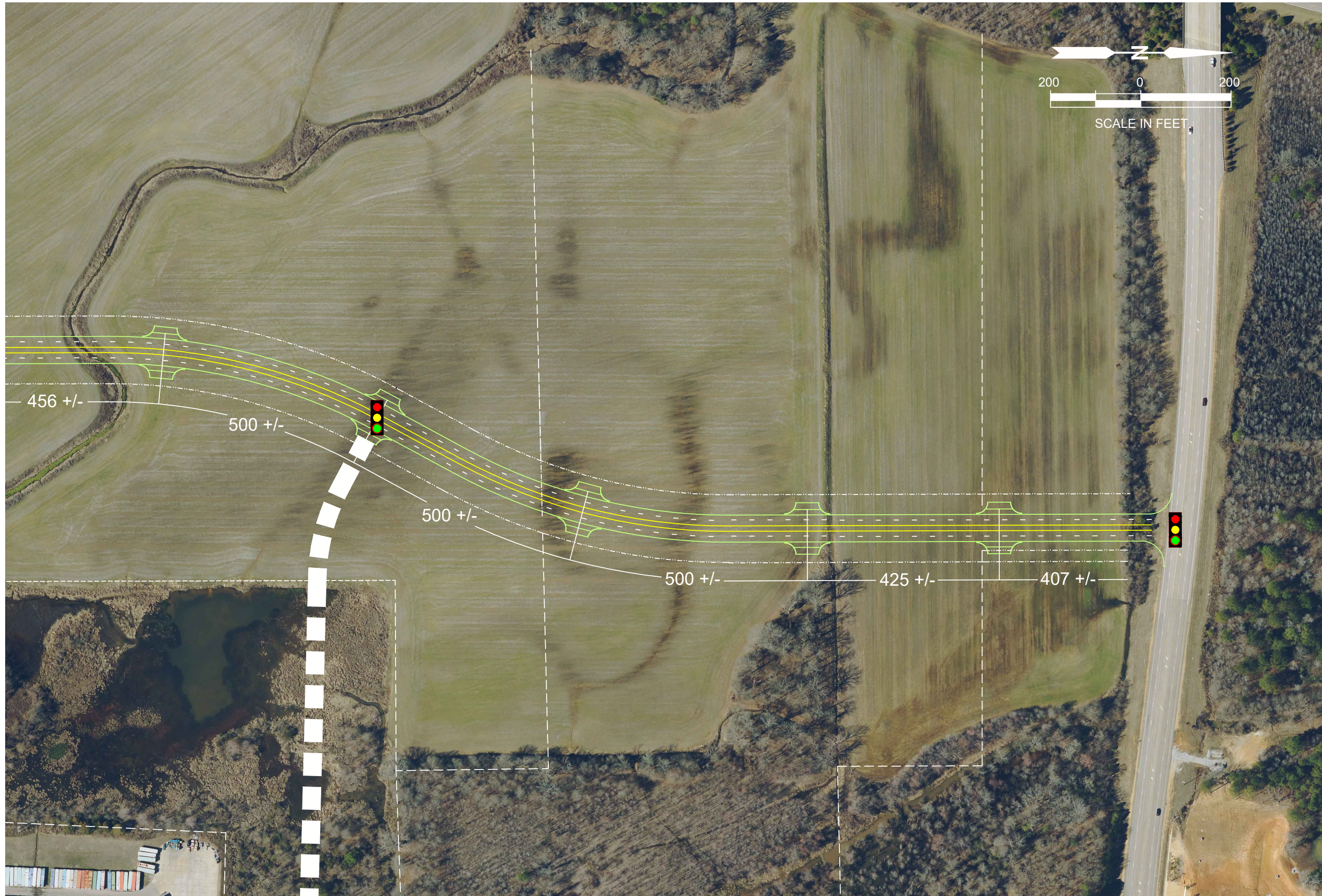


ESI
 ENGINEERING SOLUTIONS INC
 1324 NORTH VETERANS BLVD. TUPELO MS 38804
 PHONE 662.840.9063 FAX 662.840.9064 WWW.ESI-MS.COM

PRELIMINARY LAYOUT
 PROPOSED CONNECTOR (150' RIGHT-OF-WAY)
 BARNES CROSSING EXT. TO NORTH GLOSTER STREET
 TUPELO, MS

REVISIONS	
NO.	DATE
DWN. BY	
CKD. BY	
SCALE	GRAPHIC
DATE	APRIL 2024

PROJECT
T24-110
 DWG. NO.
PL-3



PRELIMINARY LAYOUT
 PROPOSED CONNECTOR (150' RIGHT-OF-WAY)
 BARNES CROSSING EXT. TO NORTH GLOSTER STREET
 TUPELO, MS

REVISIONS	
NO.	DATE

DWN. BY
 CKD. BY
 SCALE GRAPHIC
 DATE APRIL 2024