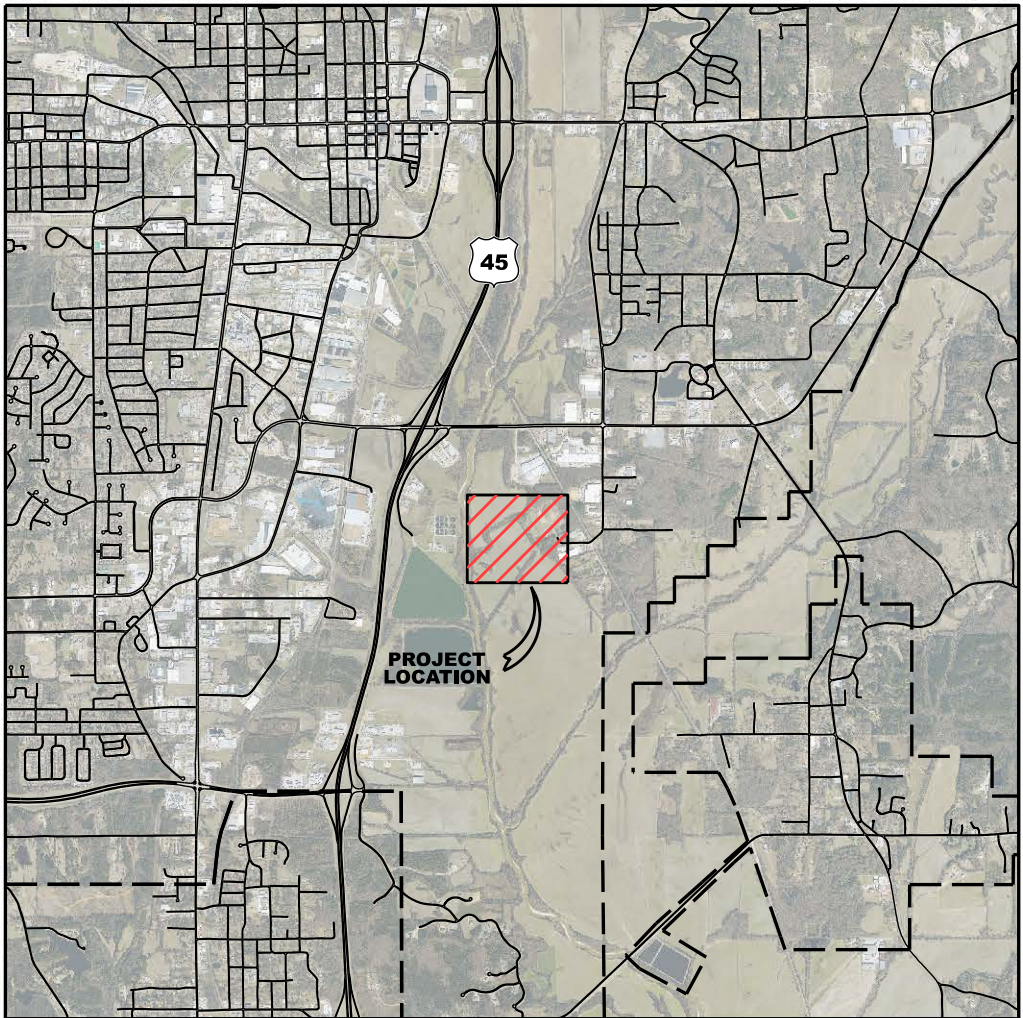


# CONSTRUCTION PLANS OF WONDURA RUBBISH SITE EXPANSION 2025 FOR CITY OF TUPELO, MISSISSIPPI

## TUPELO CITY OFFICIALS

MAYOR	TODD JORDAN
CITY COUNCIL	TRAVIS BEARD
	LYNN BRYAN
	NETTIE DAVIS
	JANET GASTON
	ROSIE JONES
	CHAD MIMS
	BENTLEY NOLAN
CHEIF OPERATING OFFICER	DON LEWIS
CITY ATTORNEY	BEN LOGAN
CHEIF FINANCIAL OFFICER	KIM HANNA
PUBLIC WORKS DIRECTOR	KELLY KNIGHT
CITY ENGINEER	DENNIS BONDS

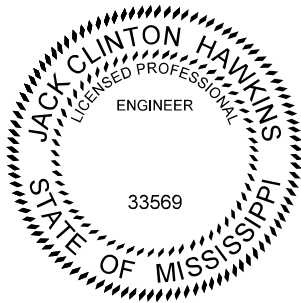


VICINITY MAP  
1 INCH = 5,000 FEET

**COOK COGGIN ENGINEERS, INC.**  
**CONSULTANTS**  
3-10217-25P

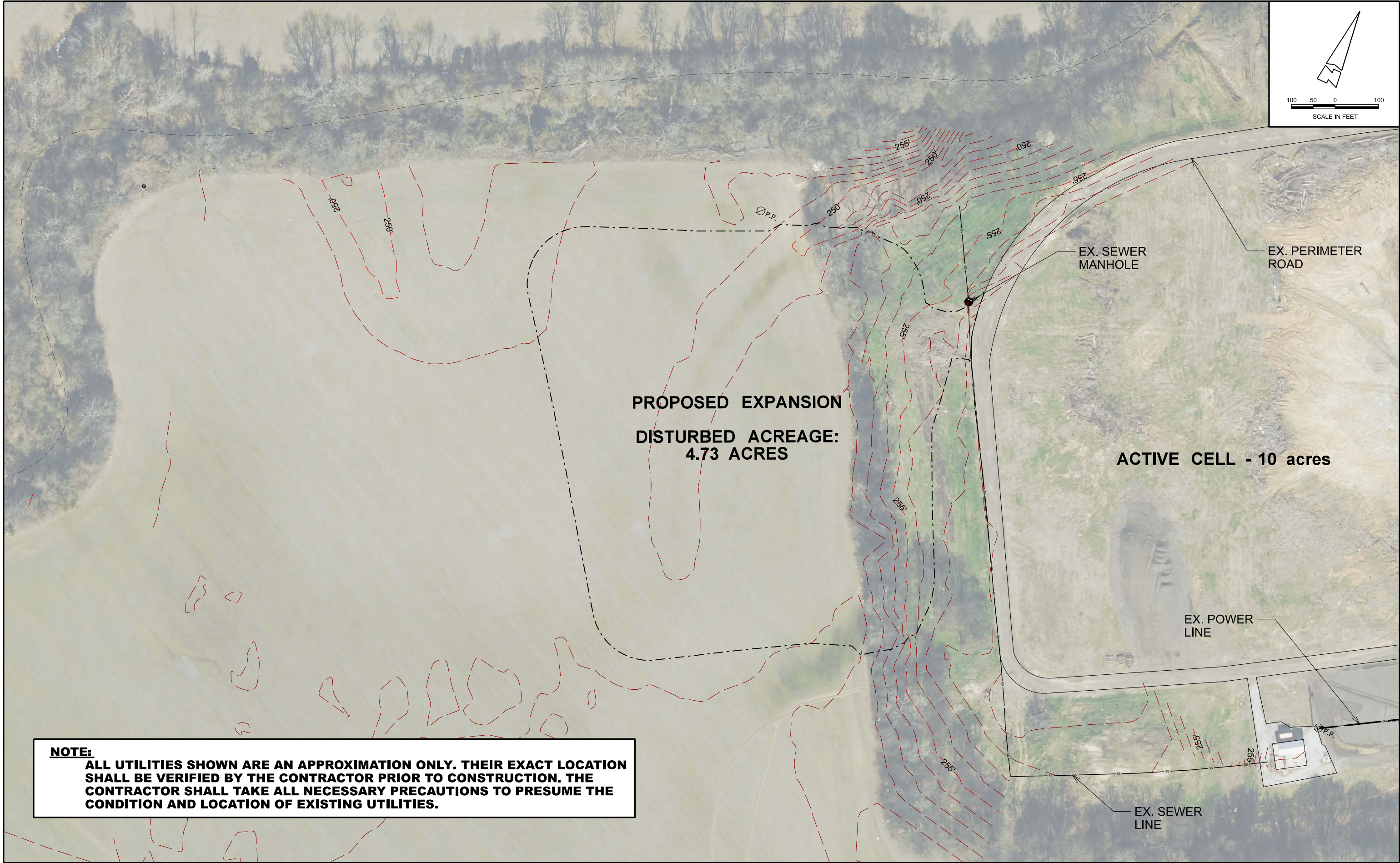
## PLAN ASSEMBLY

TITLE SHEET	-	01
EXISTING CONDITIONS	-	02
PROPOSED RUBBISH SITE	-	03
RUBBISH SITE DETAILS - SECTION VIEW	-	04
PROPOSED ACCESS ROAD	-	05
ELECTRICAL LAYOUT & DETAIL	-	06
EROSION CONTROL PLAN SHEET	-	07



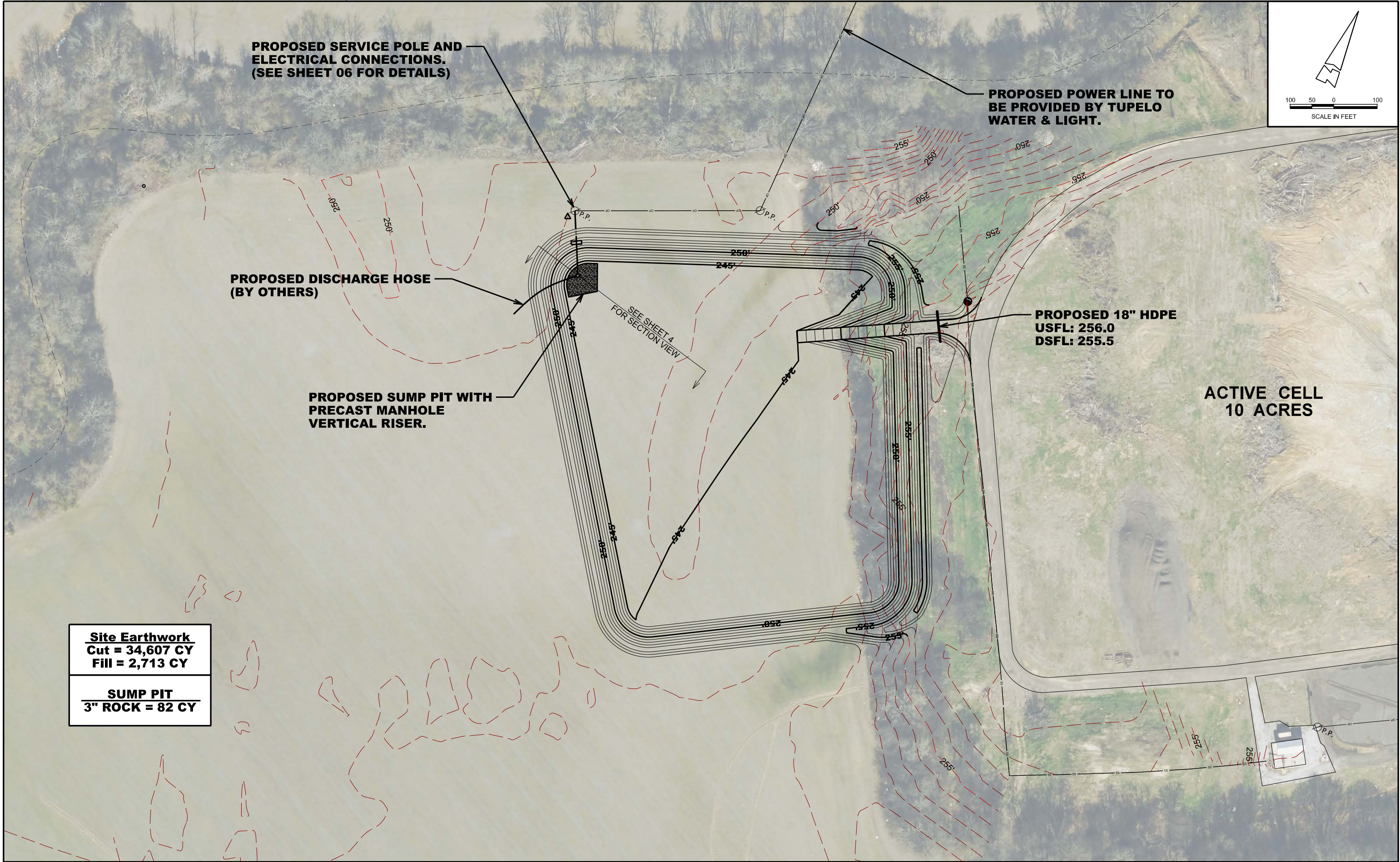
*Jack Clinton Hawkins*  
8-28-25  
JACK CLINT HAWKINS, P.E.  
AUGUST, 2025





THIS DOCUMENT, AND THE IDEAS AND DESIGNS INCORPORATED HEREIN, AS AN INSTRUMENT OF PROFESSIONAL SERVICE, IS THE PROPERTY OF COOK COGGIN ENG. AND IS NOT TO BE USED, IN WHOLE OR IN PART, FOR ANY OTHER PROJECT WITHOUT WRITTEN AUTHORIZATION.	GEO	JCH	<b>CCE</b> COOK-COGGIN ENGINEERS, INC 703 CROSSOVER RD. TUPELO, MS. 38801	REV		DATE	PROJECT NO. <b>3-10217-25P</b>	PROJECT NAME <b>WONDURA RUBBISH SITE EXPANSION 2025 TUPELO, MISSISSIPPI</b>	TITLE <b>EXISTING CONDITIONS</b>	DATE	FIGURE NO. <b>02</b>
	DGN	PJC		REV	DESCRIPTION	DATE				<b>08/25</b>	
	CAD	PJC								REVISION	





THIS DOCUMENT, AND THE IDEAS AND DESIGNS INCORPORATED HEREIN, AS AN INSTRUMENT OF PROFESSIONAL SERVICE, IS THE PROPERTY OF COOK COGGIN ENGINEERS, INC. AND IS NOT TO BE USED, IN WHOLE OR IN PART, FOR ANY OTHER PROJECT WITHOUT WRITTEN AUTHORIZATION.

GEO JCH  
DGN PJC  
CAD PJC

**CCE**  
COOK-COGGIN ENGINEERS, INC  
703 CROSSOVER RD. TUPELO, MS. 38801

REV	DESCRIPTION	DATE
REV	DESCRIPTION	DATE

PROJECT NO.  
**3-10217-25P**

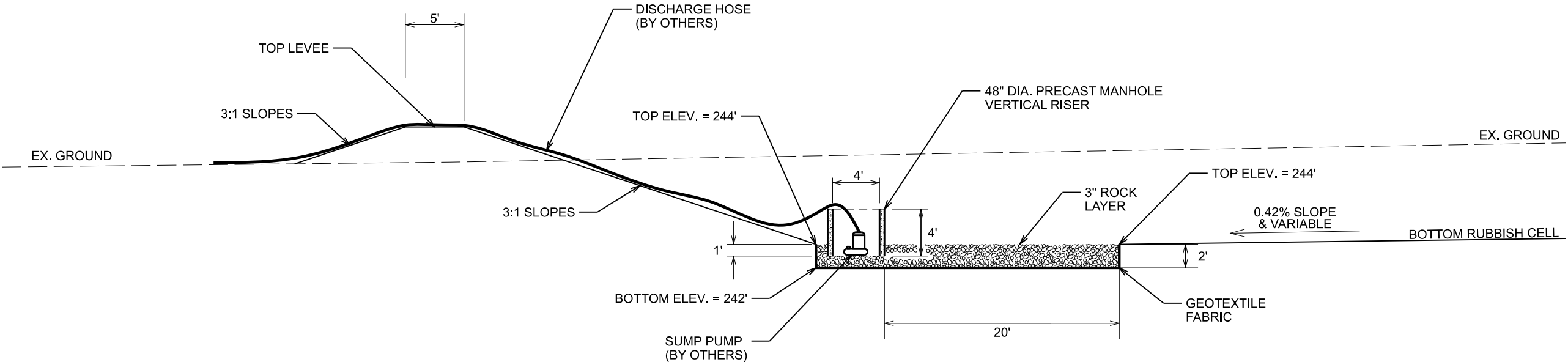
PROJECT NAME  
**WONDURA RUBBISH SITE  
EXPANSION 2025  
TUPELO, MISSISSIPPI**

TITLE  
**PROPOSED RUBBISH SITE**

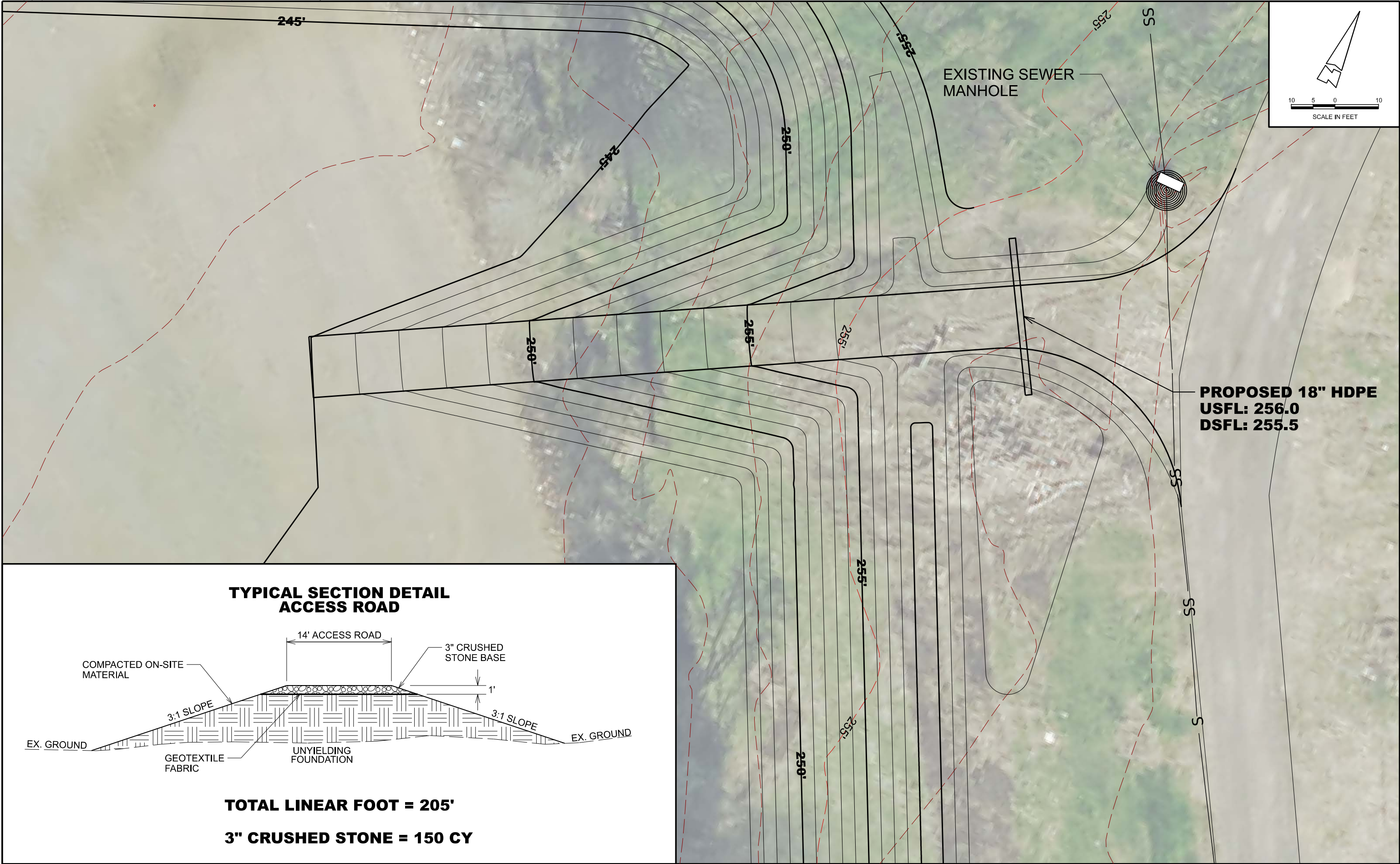
DATE  
**08/25**  
REVISION

FIGURE NO.  
**03**





SUMP PIT DETAILS  
SECTION VIEW

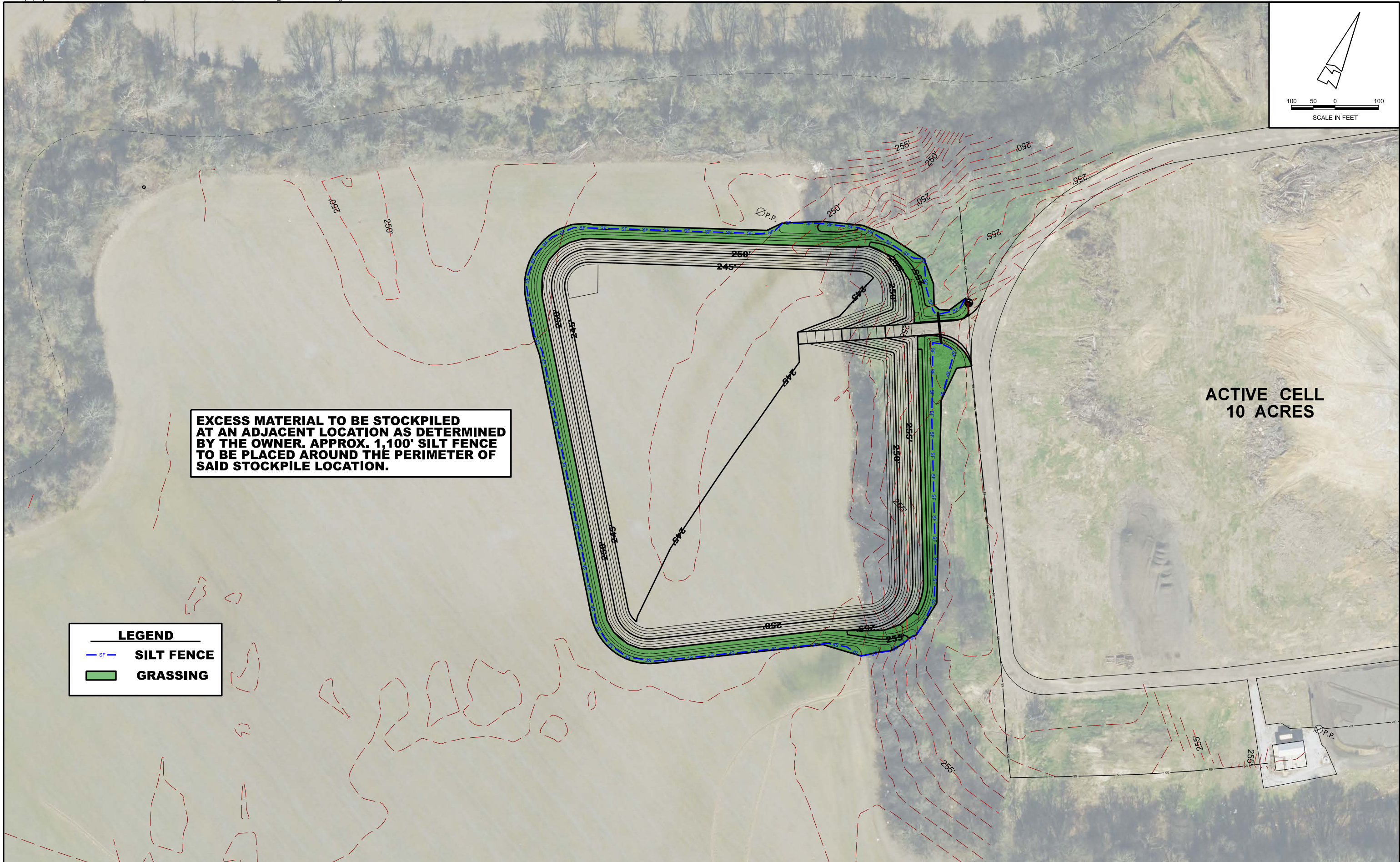


THIS DOCUMENT, AND THE IDEAS AND DESIGNS INCORPORATED HEREIN, AS AN INSTRUMENT OF PROFESSIONAL SERVICE, IS THE PROPERTY OF COOK COGGIN ENGINEERS, INC. AND IS NOT TO BE USED, IN WHOLE OR IN PART, FOR ANY OTHER PROJECT WITHOUT WRITTEN AUTHORIZATION.	GEO	JCH	<b>CCE</b> COOK-COGGIN ENGINEERS, INC 703 CROSSOVER RD. TUPELO, MS. 38801	REV		DATE	PROJECT NO. <b>3-10217-25P</b>	PROJECT NAME <b>WONDURA RUBBISH SITE EXPANSION 2025 TUPELO, MISSISSIPPI</b>	TITLE <b>PROPOSED ACCESS ROAD</b>	DATE	FIGURE NO. <b>05</b>
	DGN	PJC		REV	DESCRIPTION	DATE				<b>08/25</b>	
	CAD	PJC								REVISION	









THIS DOCUMENT, AND THE IDEAS AND DESIGNS INCORPORATED HEREIN, AS AN INSTRUMENT OF PROFESSIONAL SERVICE, IS THE PROPERTY OF COOK COGGIN ENG. AND IS NOT TO BE USED, IN WHOLE OR IN PART, FOR ANY OTHER PROJECT WITHOUT WRITTEN AUTHORIZATION.

GEO	JCH
DGN	PJC
CAD	PJC

**CCE**  
COOK-COGGIN ENGINEERS, INC  
703 CROSSOVER RD. TUPELO, MS. 38801

REV	DESCRIPTION	DATE

PROJECT NO.  
**3-10217-25P**

PROJECT NAME  
**WONDURA RUBBISH SITE  
EXPANSION 2025  
TUPELO, MISSISSIPPI**

TITLE  
**EROSION CONTROL  
PLAN SHEET**

DATE  
**08/25**  
REVISION

FIGURE NO.  
**07**