

| PLANT LIST | | | | | | | | |
|--------------|---|----------------------------------|----------|----------------|---------------|-------------|-------|---------------|
| SYMBOL | BOTANICAL NAME | COMMON NAME | QUANTITY | INSTALLED SIZE | MATURE HEIGHT | MATURE DIA. | | TYPE OF PLANT |
| TREES | | | | | | | | |
| | AMELANCHIER LAEVIS | ALLEGHENY SERVICEBERRY | 2 | 2 1/2" CALIPER | 20' | 20' | NN | D |
| | CHAMAECYPARIS NOOTKATENSIS 'JUBILEE' | ALASKAN CEDAR | 14 | 6" TALL | 20' | 5' | DT NN | EG |
| | PICEA OMORIKA 'BURNS' | BRUNS SERBIAN SPRUCE | 13 | 6" TALL | 30' | 10' | DT NN | EG |
| | SANGO KAKU MAPLE | CORAL BARK MAPLE | 3 | 2 1/2" CALIPER | 15' | 15' | DT NN | D |
| | PYRUS CALLERYANA 'CAPITAL' | CAPITAL PEAR | 12 | 2 1/2" CALIPER | 25' | 25' | DT NN | D |
| | MALUS 'JFS-KWS' ROYAL RAINDROPS | ROYAL RAINDROPS CRABAPPLE | 30 | 2 1/2" CALIPER | 20' | 15' | DT NN | D |
| | ACER PALMATUM | JAPANESE MAPLE | 12 | 2 1/2" CALIPER | 15' | 15' | DT NN | D |
| | ACER RUBRUM 'OCTOBER GLORY' | OCTOBER GLORY RED MAPLE | 4 | 2 1/2" CALIPER | 35' | 25' | DT NN | D |
| SHRUBS | | | | | | | | |
| | NANDINA DOMESTICA 'FIRE POWER' | HEAVENLY BAMBOO | 244 | 2 GALLON | 2' | 2' | DT NN | EG |
| | NANDINA DOMESTICA | HEAVENLY BAMBOO | 8 | 5 GALLON | 6' | 4' | DT NN | EG |
| | PIERIS VARIEGATA | VARIEGATED PIERIS | 33 | 5 GALLON | 4' | 4' | DT NN | EG |
| | RHODODENDRON IMPEDITUM | DWARF PURPLE RHODODENDRON | 156 | 5 GALLON | 1 | 2' | DT NN | EG |
| | THUJA OCCIDENTALIS 'SMARAGO' | EMERALD GREEN ARBORVITAE | 7 | 5' TALL | 12' | 4' | DT NN | EG |
| GROUND COVER | | | | | | | | |
| | ARCTOSTAPHYLOS UVA-URSI 'MASSACHUSETTS' | KINNINNICK (SPACED @ 3'-0" O.C.) | - | 1 GALLON | - | - | - | - |

DT NN DROUGHT TOLERANT NON NATIVE
DT N DROUGHT TOLERANT NATIVE
EG EVERGREEN
C CONIFEROUS
D DECIDUOUS

NOTE:
PLANTS ARE DROUGHT-TOLERANT ONCE ESTABLISHED AND WILL REQUIRE SUPPLEMENTAL WATER THROUGHOUT THE FIRST TWO SUMMERS AT MINIMUM.

Tree Protection Areas

Due to poor tree quality, the invasive nature of black locust, and the tree locations being under the footprint of improvements, no trees are planned to be retained.

Minimum Stocking Calculation

The City of Tumwater Tree and Vegetation Protection Ordinance requires that 20% of the existing trees (or 12 trees per acre, whichever is larger) be saved on site.

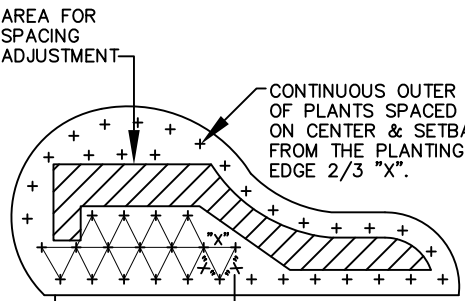
The following is a summary of the proposed tree retention:

| | |
|---|-----------|
| Total Project Acreage: | 3.1 acres |
| Total # of Healthy Trees on the Project | 8 trees |
| Required Retention (12 Trees/acre) * | 37 trees |
| Required Retention (20%): ** | 2 trees |
| Planned Tree Retention: | 0 trees |
| Planned Tree Removal | 13 trees |
| Shortage of Required Retention (37 - 0) | 37 trees |

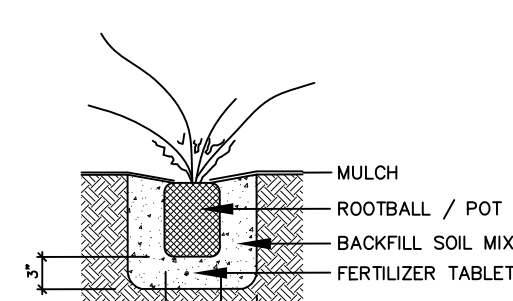
* Used for required tree retention calculation.

** Ordinance requires 20% or 12 trees/acre, whichever is greater - Sample calculation.

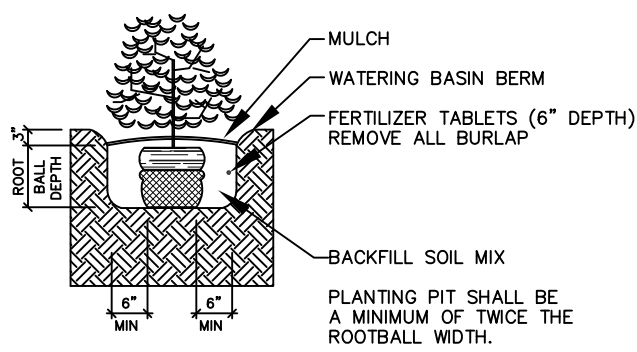
According to TMC 16.08.070.R.4: "In situations where a parcel of land to be developed does not meet the retention standards above in an undeveloped state, the applicant shall be required to reforest the site to meet the applicable standard outlined above at a 1:1 ratio as a condition of project approval." A Tree Replacement Plan is necessary since planned retention is short of the minimum stocking requirement by 37 trees. The Tumwater tree ordinance requires that 37 trees be replanted to meet the 1:1 replacement standard. This plan is providing 80 replacement trees in the landscaping plan.



PLANT SPACING DETAIL
N.T.S.



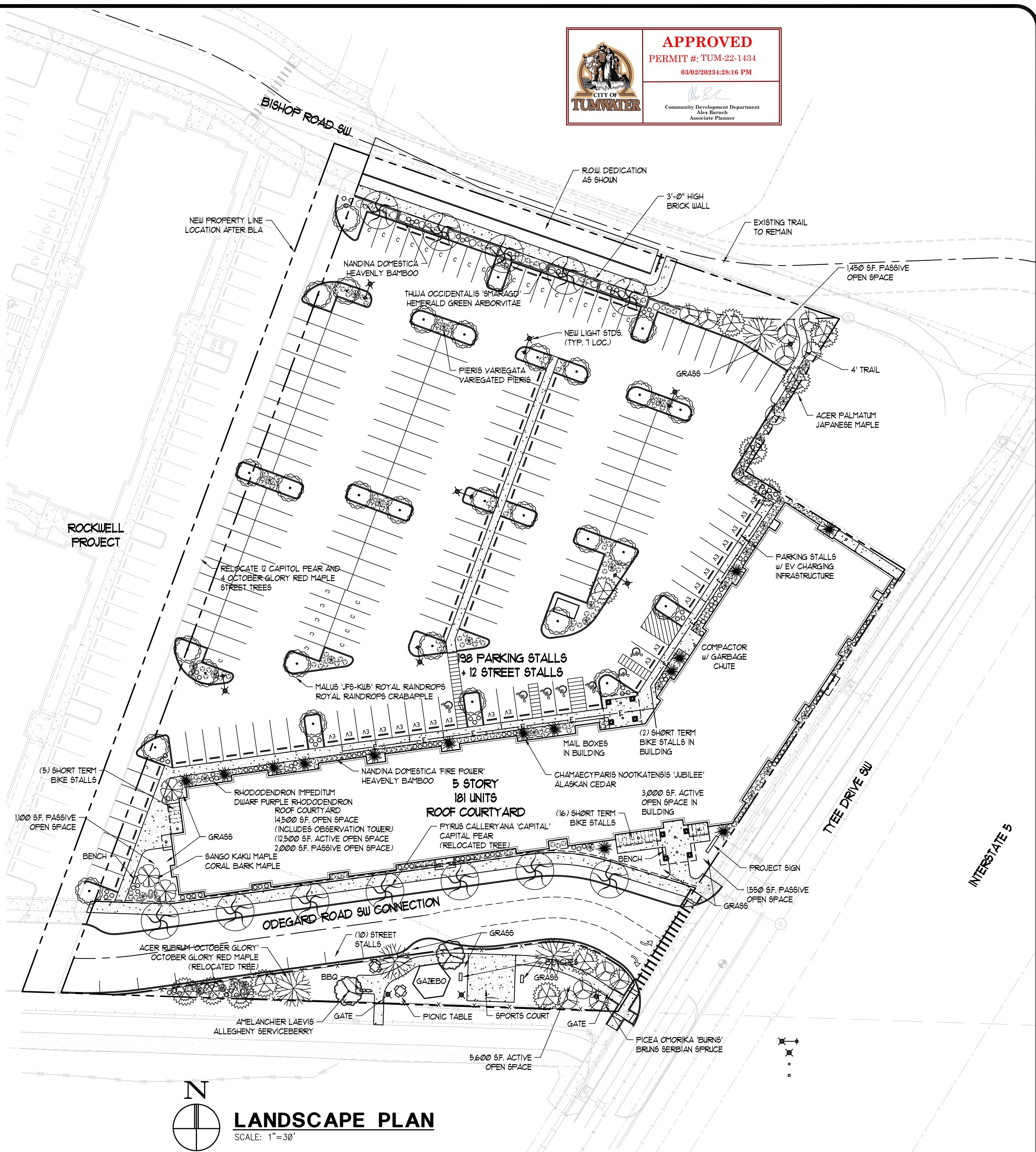
GROUND COVER PLANTING DETAIL
N.T.S.



SHRUB PLANTING DETAIL
N.T.S.

TREE PLANTING & STAKING DETAIL N.T.S.

NOTES:
Conduct tree pit drainage test in the presence of City inspector prior to planting.
Root barriers may be required when planted next to infrastructure.



date: 02-05-20
drawn: R.C.T.
checked: .

city issue: .
revisions: 07-22-22
09-09-22
02-15-23

title:

LANDSCAPE PLAN
KINGSWOOD APARTMENTS
XX00 TYE DRIVE
TUMWATER, WASHINGTON

sheet no.

L1.0