

2025 Comprehensive Plan Update Climate Element

*Balancing Nature and Community:
Tumwater's Path to Sustainable Growth*



Alyssa Jones Wood, Sustainability Manager
Planning Commission August 26, 2025

Overview

- State requirements
- What was heard
- How feedback was incorporated
- Prioritization



New State Climate Element Requirements

1. A **climate mitigation sub-element** to address actions to reduce overall greenhouse gas (GHG) emissions and vehicle miles traveled (VMT)
2. A **climate resilience sub-element** to address climate adaptation
3. Consideration of **environmental justice** to avoid worsening environmental health disparities



GHG Emission Reduction Sub-Element

- Reduce overall GHG emissions generated by transportation and land use within Tumwater without increasing emissions elsewhere in Washington
- Reduce per capita vehicle miles traveled within Tumwater without increasing GHG emissions elsewhere in Washington
- Prioritize reductions that benefit overburdened communities to maximize the co-benefits of reduced air pollution and environmental justice
- Use 2022 as a baseline year and set incremental targets that lead to achieving net zero GHG emissions in 2050, consistent with Washington's statewide target



Resilience Sub-Element

- Address natural hazards created or aggravated by climate change, including sea level rise, landslides, flooding, drought, heat, smoke, wildfire, and other effects of changes to temperature and precipitation patterns
- Identify, protect, and enhance natural areas to foster climate resilience, as well as areas of vital habitat for safe species migration
- Identify, protect, and enhance community resilience to climate impacts, including social, economic, and built-environment factors, which support adaptation to climate impacts consistent with environmental justice



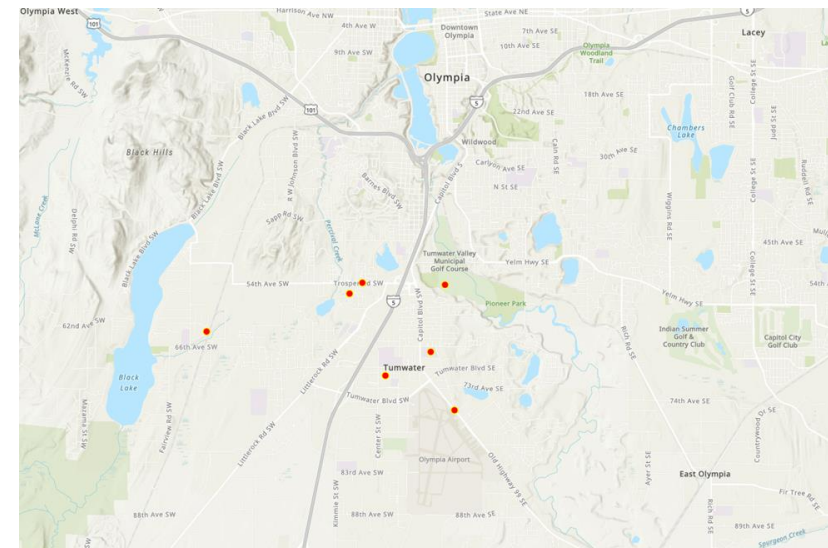
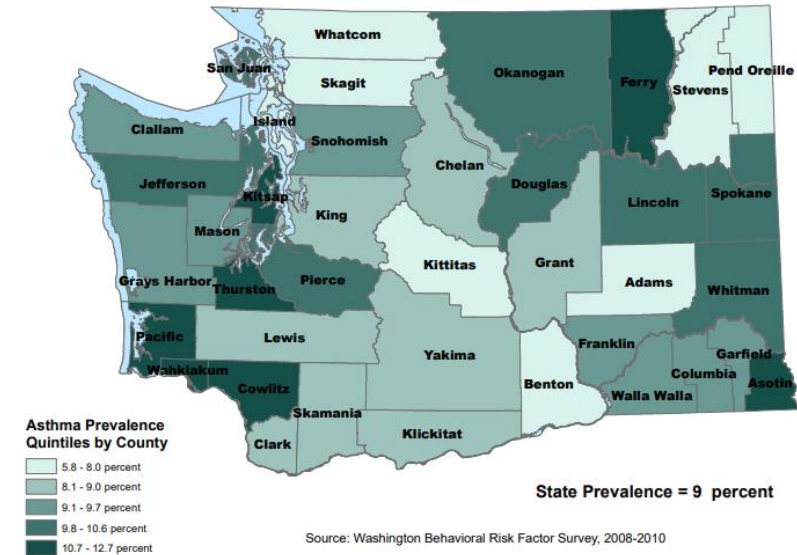
Resilience Sub-Element

- Equitably enhance the resilience of communities and ecological systems to climate change
- Be consistent with best available science and scientifically credible climate projections and impact scenarios
- Prioritize and benefit overburdened communities that will suffer disproportionately from environmental impacts and climate-exacerbated natural hazards



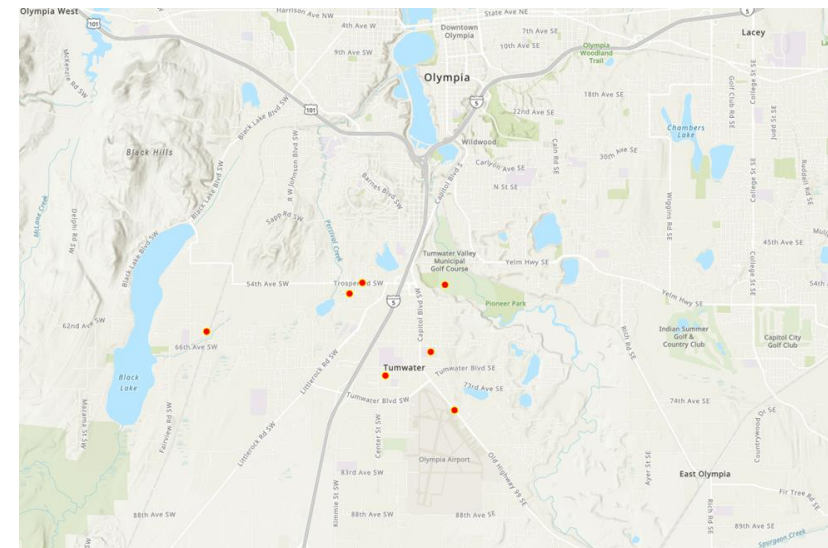
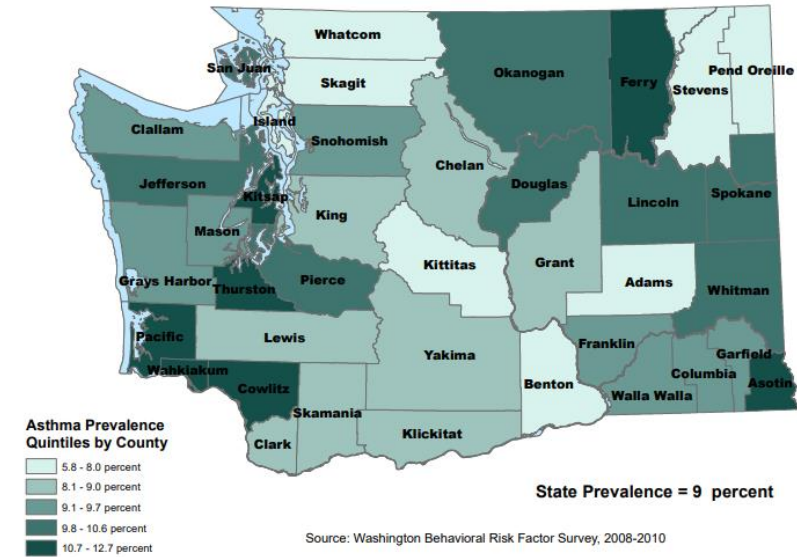
Environmental Justice in Tumwater

- Tumwater ranks an 8/10 in diesel exhaust PM 2.5 emissions, likely due to Interstate 5
 - 10% of Washington adults and 6% of children have asthma (2014 data DOH)
- Tumwater ranks a 10/10 for proximity to Superfund Sites (Palermo, cleaned up)



Environmental Justice in Tumwater

- One western Tumwater census tract ranks
 - 8/10 for population with disability
 - 8/10 for cancer deaths
 - 9/10 for death from cardiovascular disease
 - 9/10 for premature death
- The City is actively working on assessments of two brownfields
 - Former Brewery and WSDOT properties



Ways We Reached Out

- Climate Policy Advisory Team
- In-Person Open House
- Online Open House
- Public Comment Period
- Thurston Climate Mitigation Collaborative Community Advisory Workgroup
- Meetings and presentations with/to Community Based Organizations, non-profits, and local agencies
- Tabled at the Tumwater Library and Tumwater Mountainview Church satellite Thurston County Food Bank location



What We Heard

- We received more than 240 comments



- [illegible]

Comment Register

Method of receiving feedback	Comment	Author	Staff Response	Feedback incorporated?
Email	<p>Buildings & Energy Phase out natural gas use in existing publicly owned facilities by [insert target date] and retrofit with electric heat pumps. Prioritize the preservation and weatherization of housing in overburdened communities, particularly at higher densities, to reduce emissions and increase resilience. Maximize renewable energy sources for the supply of electricity and heat to new and existing buildings.</p> <p>Install distributed renewable energy generation and battery infrastructure at public facilities to store renewable electricity generated on site and provide emergency power that ensures continuity of operations.</p> <p>Provide overburdened communities subsidies to offset potential cost increases associated with conversion to non-fossil-fuel energy sources.</p> <p>Zoning Consider climate change, including sea-level rise, extreme precipitation, increased winter streamflow, and other impacts, in floodplain management planning. Identify and protect agricultural and forested lands that provide climate resilience benefits from conversion to more developed land use types. Consider future climate conditions during siting and design of capital facilities, including changes to temperature, rainfall, and sea level, to help ensure they function as intended over their planned life cycle.</p> <p>Ecosystems Adopt a forest master plan and implementing ordinances to maintain and expand tree canopy cover, improve tree and watershed health, prioritize carbon sequestration, and build climate resilience.</p> <p>Econ Ensure that the local economy is resilient to climate disruptions and fosters business opportunities associated with climate mitigation and adaptation.</p>	Mason Rolph Executive Director, Olympia Community Solar	Because of Initiative 2066, we cannot prohibit, penalize, or discourage the use of gas for any form of heating or for any uses related to any appliances or equipment in any building. Policy CL-9.4 intends to expand weatherization. CL-9 and CL-5 seeks to expand renewable energy generation. CL9.2 addresses renewable and battery storage for existing city facilities. Goal CL-10 and CL-13 seek to address considering climate change's impacts in zoning and planning. The City of Tumwater already has an Urban Forestry Management Plan and is in the process of implementing it, including canopy measures. Goal CL-13 addresses the local economy and climate resilience.	✓
Email	<p>I think the "Summer Maximum Temperature" row in Table 2 on p. 22 is supposed to include "increase" after the numbers.</p> <p>Page 22 says, "Although Tumwater is not projected to experience drastic sea level rise in this period..." What does the City expect about the effects of significant high tides on the old Brewery and the adjacent park after the dam is removed and various amounts of sea level rise occur?"</p> <p>The labels for Table 5 and Table 6 have ended up shifted to the next page.</p>	Thad Curtz	Edits made.	✓
Email	CEMP update integration?	Thad Curtz	We will incorporate the Climate Element into the	

CPAT Prioritized Actions

High Impact Climate Actions. Drive the greatest number of emissions reductions and/or reduce casualties due to climate hazards immediately or in the near term

Easy Wins. Easier to accomplish, allowing the Tumwater community to feel motivated by real and visible progress

Building longevity. Create a more equitable, just, and resilient community in the long term but require action now to build that future



CPAT Prioritized Actions

Futureproofing for Everyone. Help to untangle potential future conflicts and allow Tumwater to create policies and legislate on the side of climate action

Everyday concerns (equity). Create a more equitable and just community immediately or in the near-term, addressing issues of economic injustice and making it possible for Tumwater's community members to access basic needs





Discussion & Questions