

**NOTE:**

1. EACH LOT SHALL PROVIDE A LANDSCAPE AND IRRIGATION PLAN FOR AGENCY APPROVAL.
2. THE LANDSCAPE PLAN MUST SHOW PROPOSED PLANTINGS, TREE TYPES AND HEIGHTS, AND OTHER VEGETATION.
3. THIS PLAN IS TO BE SUBMITTED WITH THE SITE DEVELOPMENT/GRADING AND ENGINEERING PERMITS FOR EACH LOT AND IS TO BE IMPLEMENTED PRIOR TO THE ISSUANCE OF A CERTIFICATE OF OCCUPANCY.
4. IRRIGATION OF ALL LANDSCAPE BEDS IS REQUIRED. TEMPORARY IRRIGATION FOR PLANTING AREAS WITH NATIVE PLANT MATERIAL IS REQUIRED BUT MAY BE DECOMMISSIONED AFTER PLANT ESTABLISHMENT (3 YEARS).
5. TREES:  
TOTAL PERIMETER LANDSCAPING REQUIRED TREES = 70  
PARKING LOT TREES WILL BE REQUIRED. QUANTITY TO BE DETERMINED AT EACH LOT DESIGN

UNDER BPA POWER LINES - TREES ARE NOT PERMITTED - AN ALTERNATIVE LANDSCAPE DESIGN EXCEEDING THE PLANTING DENSITY OR OTHER SUPERIOR DESIGN IS REQUIRED TO COMPENSATE FOR THE TREES NOT ALLOWED.

**ALTERNATIVE LANDSCAPING**  
MORE SHRUB DENSITY THAN 75% REQUIRED UNDER POWER LINES AS NO TREES PERMITTED

**18.47.050.E PARKING AREA INTERIOR BUFFERS.**

**a. Design.**

- i. Live planting material shall be provided throughout each landscaping area, and may be any combination of grass, shrubs and trees that provide the desired effect of providing visual relief and green space within the parking area.
- ii. Each planting area shall contain at least one tree. Up to one hundred percent of the trees proposed for the planning area may be deciduous.
- iii. Landscaping islands must be placed in every parking row at a maximum spacing of every ten parking spaces. Landscaping islands shall be a minimum of eight feet in width and shall extend the length of the parking stall. The minimum required width may be reduced for landscaping islands located in angled parking areas. In cases where no more than two parking rows wide are proposed for the entire parking lot, the maximum spacing requirement (ten spaces) may be varied as part of the site plan review process provided the total requirements for total landscaping area are met.
- iv. To provide for vehicle overhang, curbs need to be located at least three feet from the trunk of the tree.

**b. Required Amount.**

- i. If the parking area contains more than ten but no more than fifty parking spaces, at least seventeen and one-half square feet of landscape development must be provided for each parking stall proposed.
- ii. If the area contains more than fifty but no more than one hundred parking spaces, at least twenty-five square feet landscape development must be provided for each parking stall proposed.
- iii. If the parking area contains more than one hundred spaces, at least thirty-five square feet of landscape development must be provided for each parking stall proposed.

The above requirements are considered a minimum. Additional landscape area may be necessary to meet design requirements above.

**18.47.050.B - TYPE 2 PERIMETER LANDSCAPE BUFFER ALONG GC ZONE**

**Description.**

- a. Trees shall be any combination of deciduous and evergreen (with no more than fifty percent being deciduous). One tree shall be provided for each twenty-five lineal feet of landscaped area.
- b. A minimum planting area of eight feet in width shall be required.
- c. Evergreen shrubs and ground cover must provide seventy-five percent coverage of the designated area within four years from planting.

**18.47.050.D Landscaping between Parking Lots and Public Rights-of-Way.**  
Any of the following landscaped strip treatments may be used singly or in combination:

- a. Provide a minimum ten-foot-wide landscape strip between the right-of-way and the parking lot to be planted with a minimum of one shade tree and ten shrubs per thirty-five linear feet of frontage, excluding driveway openings.
- b. Provide a berm, the top of which is at least two and one-half feet higher than the elevation of the adjacent parking lot pavement. The slope of the berm shall not exceed thirty-three percent for lawn areas. Berms planted with ground covers and shrubs may be steeper. However, no slope shall exceed fifty percent. Berms should be graded to appear smooth, rounded, naturalistic forms. Avoid narrow bumps, which result from creating too much height for width of the space. Plant with a minimum of one shade tree and five shrubs per thirty-five linear feet of frontage, excluding driveway openings.
- c. Provide a minimum six-foot-wide landscaped strip and a minimum three-foot grade drop from the right-of-way line to the adjacent parking lot pavement. Plant the resulting embankment with a minimum of one shade tree and five shrubs per thirty-five linear feet of frontage, excluding driveway openings. Ground cover or low shrubs shall be planted to attain seventy-five percent coverage within four years.
- d. Provide a minimum five-foot-wide landscaped strip between the right-of-way line and the parking lot, with a minimum three-foot-high brick, stone or finished concrete wall to screen the parking lot. The wall shall be located adjacent to but entirely outside the five-foot landscaped strip. Plant with a minimum of one shade tree per thirty-five linear feet of frontage, excluding driveway openings.
- e. Provide a minimum twenty-five-foot-wide strip of existing native vegetation, unless the creation of such a strip creates a hazard of existing trees as determined by a certified landscaper or forester.

PLANT LIST			
SYMBOL	QTY	DESCRIPTION	SIZE
TREES			
	2	Carpinus betula fastigiata Columnar Hornbeam	2" Cal. Min.
	1	Picea omorika Serbian Spruce	6' Ht. Min.
	9	Pseudotsuga menziesii Douglas Fir	6' Ht. Min.
	12		
SHRUBS			
	32	Acer circinatum Vine Maple	2 Gal. Min.
	135	Mahonia aquifolium Tall Oregon Grape	2 Gal. Min.
	68	Cornus stolonifera Red Osier Dogwood	2 Gal. Min.
	93	* Deschampsia cespitosa Tufted Hairgrass	1 Gal. Min.
	35	Lonicera involucrata Black Twinberry	1 Gal. Min.
	12	Myrica californica Pacific Wax Myrtle	5 Gal. Min.
	19	Ribes sanguineum Flowering Currant	2 Gal. Min.
	70	Rosa gymnocarpa Wild Rose	2 Gal. Min.
	11	Rosa nutkana Nootka Rose	2 Gal. Min.
	80	Symphoricarpos albus Snowberry	2 Gal. Min.
	49	Arctostaphylos uva ursi Kinnickinnick	1 Gal. Min.
	13	Corylus cornuta Hazelnut	1 Gal. Min.
	1628 sf	Fragaria chiloensis Coastal Strawberry at 30" O.C. triangular spacing	1 Gal. Min.
	5941 sf	Native - Super Short Pollinator Hydrosed mix by Sunmark Seeds - sunmarkseeds.com	

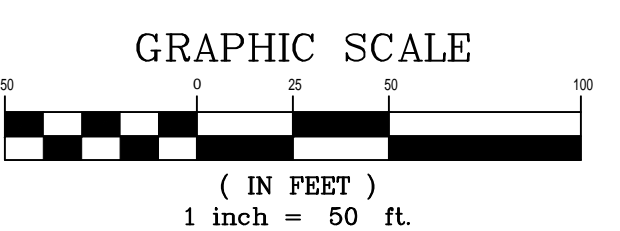
**FROM THE ARBORIST'S REPORT**

Replanting  
This project falls short of the minimum retention by 79 trees and is therefore required to replant at a rate of 1:1 within the site. This requirement will be met with the landscape plans and will follow the standards as outlined in TMC 16.08.070.3.

TOTAL REQUIRED TREES ADDITIONAL:	79
PHASE 1 PROPOSED TREES:	12
TO BE PROPOSED IN LOT DESIGNS:	67

**Exhibit 22**

**PRELIMINARY OVERALL  
LANDSCAPE PLAN - PHASE 1**



**PROJECT:**

**KINGSWOOD COMMERCIAL**  
**1551 Kingswood Dr. SW**  
**TUMWATER WA**

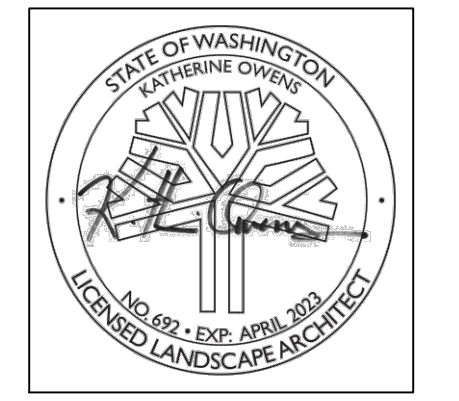
**LDC, INC**  
20210 142?? Ave NE  
Woodinville, WA 98072

**REVISIONS:**

B REVISED PER COMMENTS 7/13/2022  
C REVISED PER COMMENTS

**DRAWING ISSUED FOR:**  
**AGENCY REVIEW**

**DATE:** OCTOBER 26, 2022



**PROJECT NO:** 2232  
**FILE NAME:** 2232LSC  
**DRAWN BY:** KLO  
**CHECKED BY:** KLO  
**X-REFS:** CIVIL  
**PLOT SCALE:** 1:1  
**DRAWING SCALES:** 1:50

**DRAWING CONTENTS**

**PRELIMINARY OVERALL LANDSCAPE PLAN**

**DRAWING NO.:**

**L1**

1 OF 4





KINGSWOOD COMMERCIAL  
1551 Kingswood Dr. SW  
TUMWATER WA  
LDC, INC  
20210 142??? Ave NE  
Woodinville, WA 98072

1000

REVISIONS:

B. REVISED PER COMMENTS 7/13/2022

C. REVISED PER COMMENTS

**DRAWING ISSUED FOR:**  
AGENCY  
REVIEW  
**DATE:** OCTOBER 26, 2022



PROJECT NO:	2232
FILE NAME:	2232LSC
DRAWN BY:	KLO
CHECKED BY:	KLO
-REFS:	CIVIL
LOT SCALE:	1:1
DRAWING SCALES:	1:20

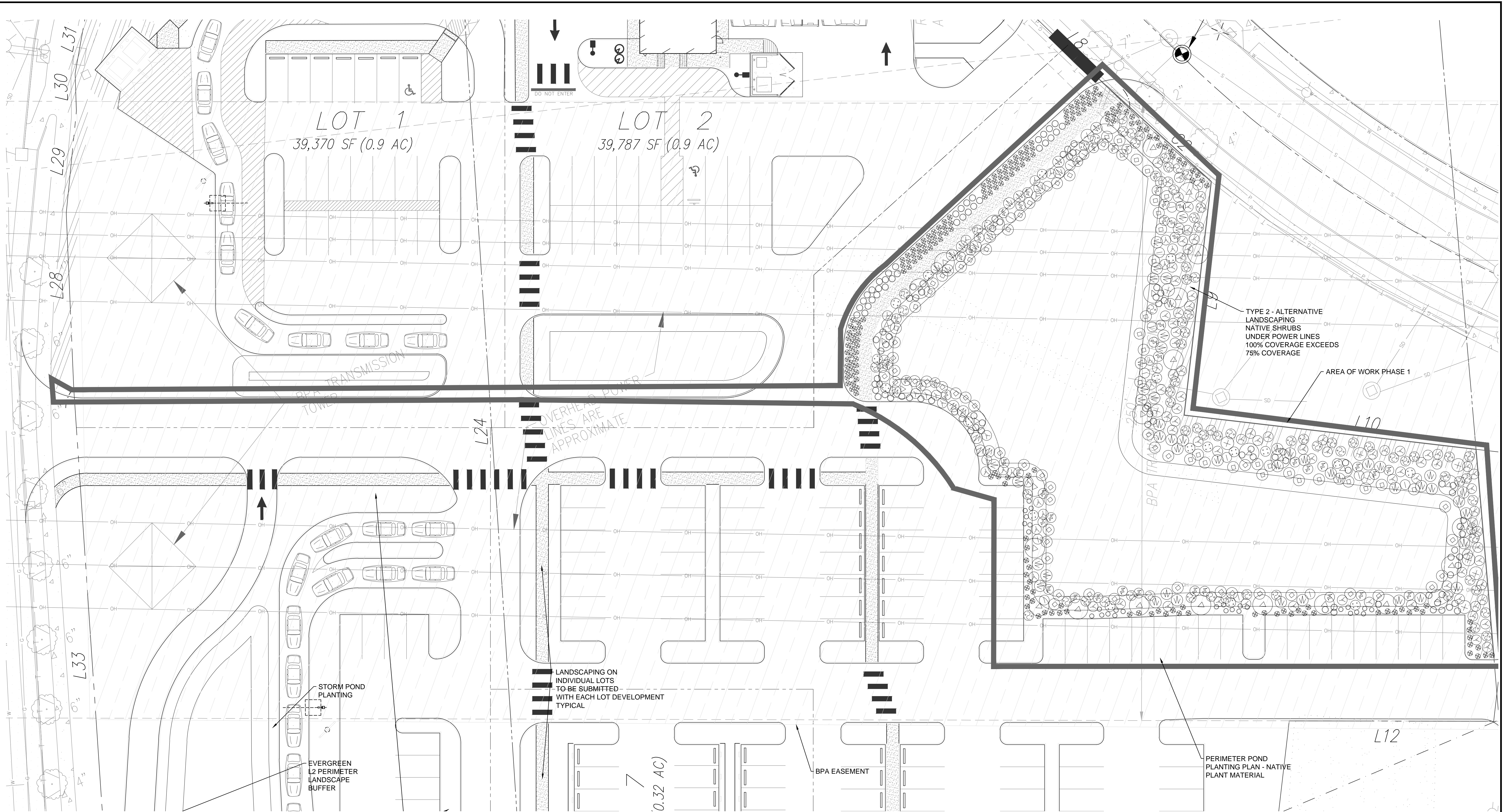
# RAWING CONTENTS

## PRELIMINARY PLANTING PLAN-NORTH

RAWING NO.:

## L2

2 OF 4

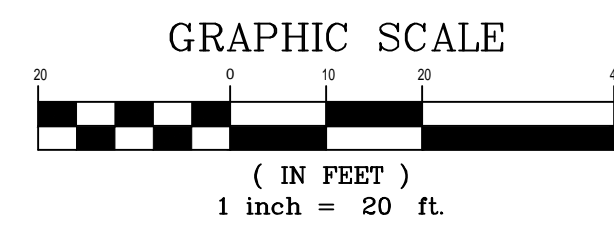


**IRRIGATION NOTE:**  
Back flow prevention is required on all fire services and irrigation services and in accordance with the AWWA Cross Connection Control Manual. A reduced pressure backflow assembly is required on all commercial domestic services per WAC 246-290-490. Please contact maintenance at 754-4150 for more information.

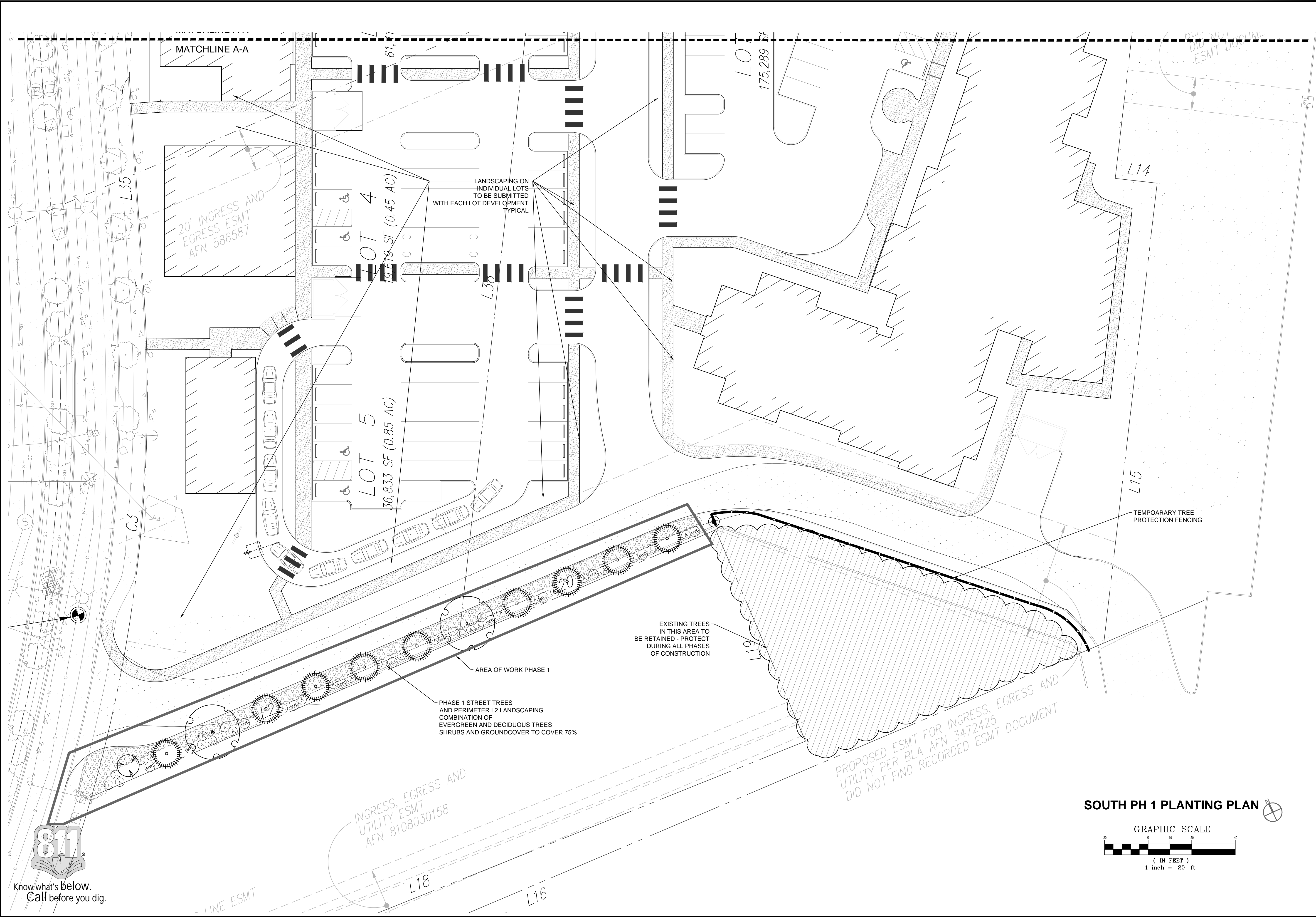


Know what's below.  
Call before you dig.

## NORTH PH 1 PLANTING PLAN







**PROJECT:**

**KINGSWOOD COMMERCIAL**  
1551 Kingswood Dr. SW  
TUMWATER WA

LDC, INC  
20210 142?? Ave NE  
Woodinville, WA 98072

**REVISIONS:**

B. REVISED PER COMMENTS 7/13/2022  
C. REVISED PER COMMENTS

**DRAWING ISSUED FOR:**  
AGENCY REVIEW

**DATE:** OCTOBER 26, 2022

STATE OF WASHINGTON  
CATHERINE O'BRIEN  
NO. 692 • EXP. APRIL 2023  
LICENSED LANDSCAPE ARCHITECT

PROJECT NO.: 2232  
FILE NAME: 2232LSC  
DRAWN BY: KLO  
CHECKED BY: KLO  
X-REFS: CIVIL  
PLOT SCALE: 1:1  
DRAWING SCALES: 1:20

**DRAWING CONTENTS**

**PRELIMINARY PLANTING PLAN - SOUTH**

DRAWING NO.:

**L3**

3 OF 4

ORIG. SHEET SIZE 22X34



GENERAL LANDSCAPE NOTES

1. Contractor is responsible for obtaining all necessary permits from the appropriate agency prior to commencing work. Contractor shall contact Line Locators (811) a min. of 48 hours prior to any digging or trenching. If there are any discrepancies with existing lines and landscaping, it is the contractor's responsibility to contact the landscape architect and request a site visit to address the conflicts. Contractor shall comply and conform to any and all local and state codes for work, schedules and any other project related requirements.
2. Contractor shall coordinate directly with the landscape architect for all landscape related issues, concerns, inspections and approvals. Contractor shall provide the landscape architect with a written request for a site visit to address any related items.
3. Scope of work shall include any and all specified and unspecified but related incidental work to achieve the design indicated on the landscape plans. All labor, materials, subcontractors, equipment, and related incidental items shall be supplied and installed to achieve a complete project, unless directed otherwise by the general contractor or landscape architect.
4. Contractor to verify all sub grades are set below required amendments to insure the finished grade will match what is intended by civil or drainage design. All sub grades and finished or final grades shall be graded to drain to the designed drainage system with positive drainage away from all structures.
5. **Grade Preparation:**
- a. Slopes used for grass plantings or turf shall be less than 3:1 or 33 percent. Otherwise plantings should not require mechanized mowing equipment.

Soil Preparation.

- a. Where soils are compacted, planting beds should be deep tilled to a depth of at least 12 inches. Soils shall be enhanced through the addition of the following materials: bark and forestry by-products, organic matter such as composted yard waste, organics and other amendments as needed through a soils test. Where Pit Planting, see planting detail for planting ring sizes and depths. Scarify the edges of planting pits to encourage root expansion.
- b. On project sites where topsoil is limited or nonexistent, a minimum depth of 6 (six) inches of sandy loam topsoil should be tilled into the soil to a depth of 12 inches through all planting areas with compacted soils.
- c. For all newly planted areas, three cubic yards of composted organic matter per 1,000 square feet of landscape area should be added to a depth of four inches to the top of the soil and Tilled in.
- d. Seeded areas shall be fine graded and rolled. New Soil depths in lawn areas shall be 4 Inches.

6. Mulching of Newly Planted or Replanted Areas.

- a. Mulches must be applied to the following depths: a minimum 3 (three) inches over bare soil, and two inches where plant materials will cover.
- b. Mulches must include organic materials, such as wood chips and shredded bark.
- c. Nonporous materials, such as plastic sheeting, shall not be used in any area of the landscape because of down-slope erosion and potential soil contamination from herbicide washing.
- d. Mulch should be applied regularly to and maintained in all planting areas to assist soils in retaining moisture, reducing weed growth, and minimizing erosion.
7. Contractor shall field layout all plant material and contact the landscape architect for a site visit to approve the layout. Any field modifications shall be done by the landscape architect prior to planting.

8. Contractor shall immediately notify the landscape architect of any poor drainage condition in landscape areas. No standing water shall be permitted in any landscape areas - either on the surface or below the topsoil. The landscape architect shall coordinate the drainage solution with the general contractor and civil engineer. Once the concerns have been remedied planting shall commence.

9. All groundcover to be planted in a triangular spacing formation, equal in all directions to the centers of the groundcovers in distances indicated in the legend. Contractor shall verify all quantities of groundcovers by area calculations and spacing requirements.

10. Landscaping is to be per plan. Plant substitutions due to availability or otherwise will be allowed only with landscape architect, owner and agency approval. Any substitutions will be with material of similar size, growth characteristics, and quality.

11. All trees must be staked as necessary so as to maintain material in a healthy, vigorous growing condition.

12. Landscaping shall be installed in a professional workmanlike manner that is consistent and accepted throughout the industry. All landscape and irrigation work shall be performed by experienced persons familiar with scope of project.

13. All landscape material and labor is to be guaranteed for a period of one full year from the time of completion.

14. When planting 'Balled and Burlapped' product, remove all burlap, string & wire from any B&B plant material, cut and remove jute strings. Gently place in tact Rootbal into planting pit. If rootball breaks or is not solid - the plant is unacceptable and shall be replaced.

15. Street trees shall be high branching with canopy that starts at least 6' above finish grade.

16. All plant I.D. tags are to remain on the plant material until final inspection has been completed. Once approved all plant I.D. tags shall be removed and discarded appropriately.

17. Trees shall be cared for in accordance with the American National Standards Institute (ANSI) standard practices for trees, shrubs and other woody plant maintenance (ANSI 300) in order to allow them to reach there mature height and form.

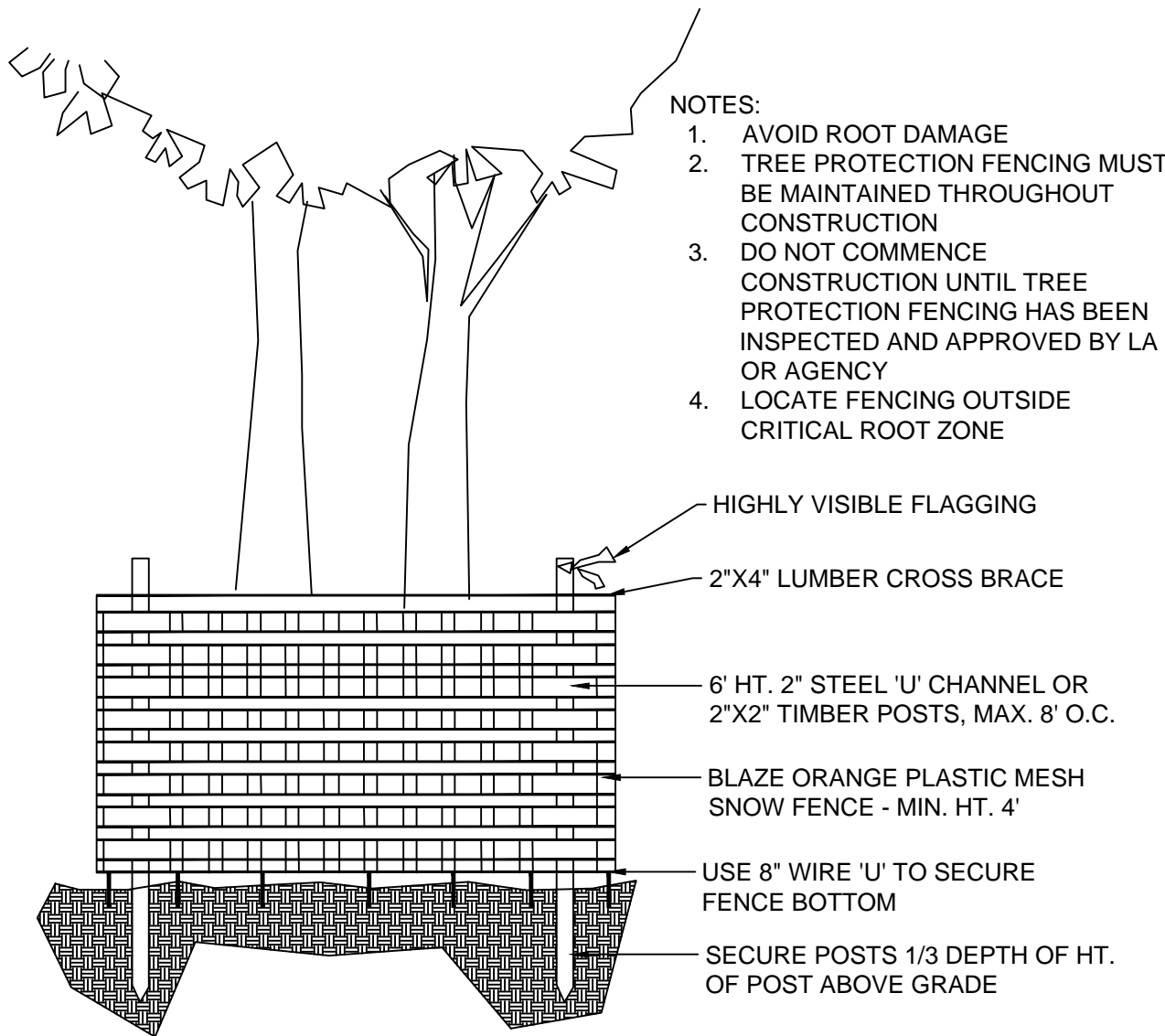
18. Pruning of street trees shall be performed per the ANSI 300 standards so as to maintain the natural form of the tree, encourage vigorous growth to a mature spread and height, and avoid weakening the tree to create a hazard. Street trees shall not be topped pollarded, or otherwise pruned in a manner contrary to these goals, unless there is no practicable alternative that would preserve essential utility services.

Plant material selected is drought tolerant or native species. The project proponent shall be responsible for maintaining and watering all plant material throughout the first growing season and in times of drought. A permanent irrigation system shall be designed and submitted at final review for phase 1.

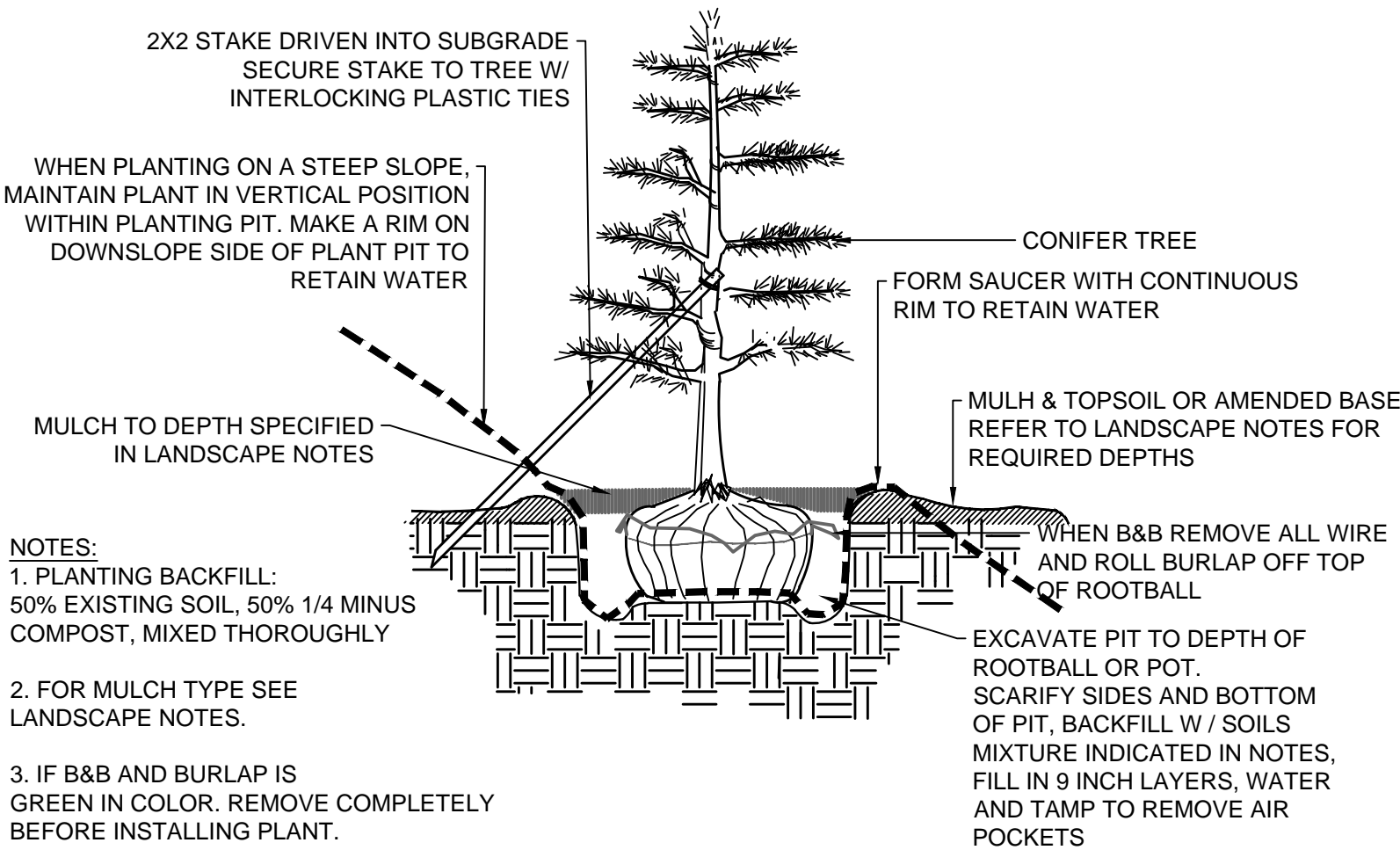
It is recommended to install the landscaping in the Spring (February - April) or Fall (October - December)when dormant but before hard freeze.

TEMPORARY IRRIGATION

The project proponent shall ensure that a minimum of **one (1) inch of water is supplied each week** to the restoration area between May 1 and October 15 for a least the first two years following initial planting. The calculated amount of required water shall include both natural rainfall and temporary irrigation.

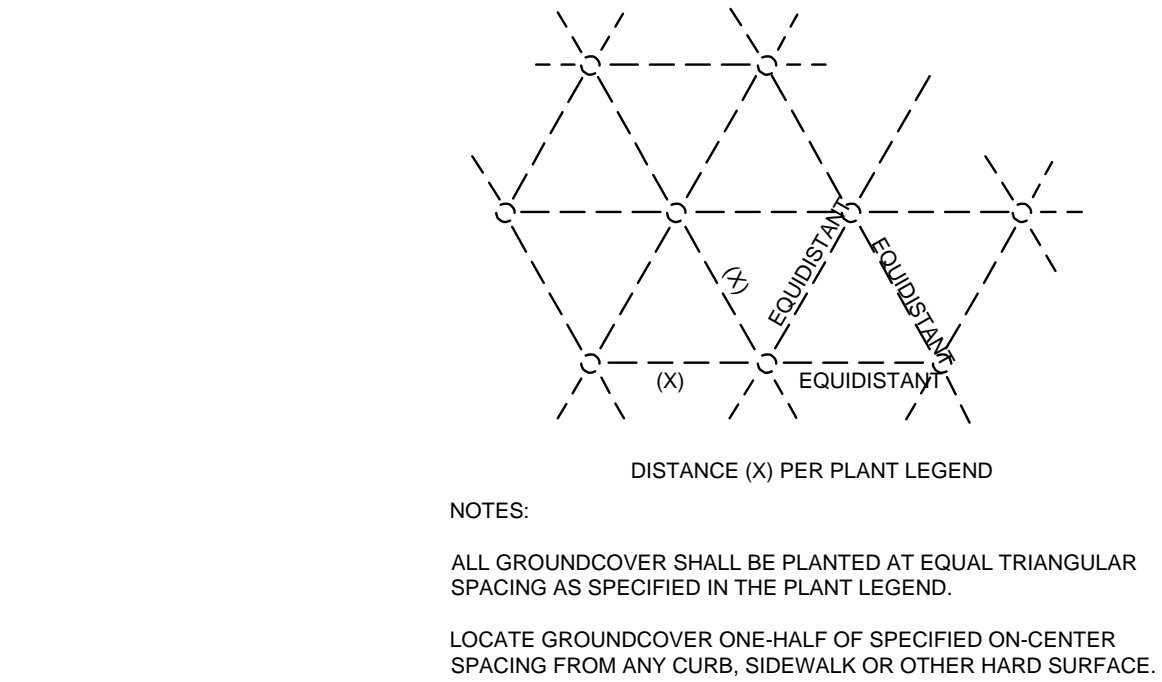


TEMPORARY TREE PROTECTION FENCING - ORANGE MESH FABRIC



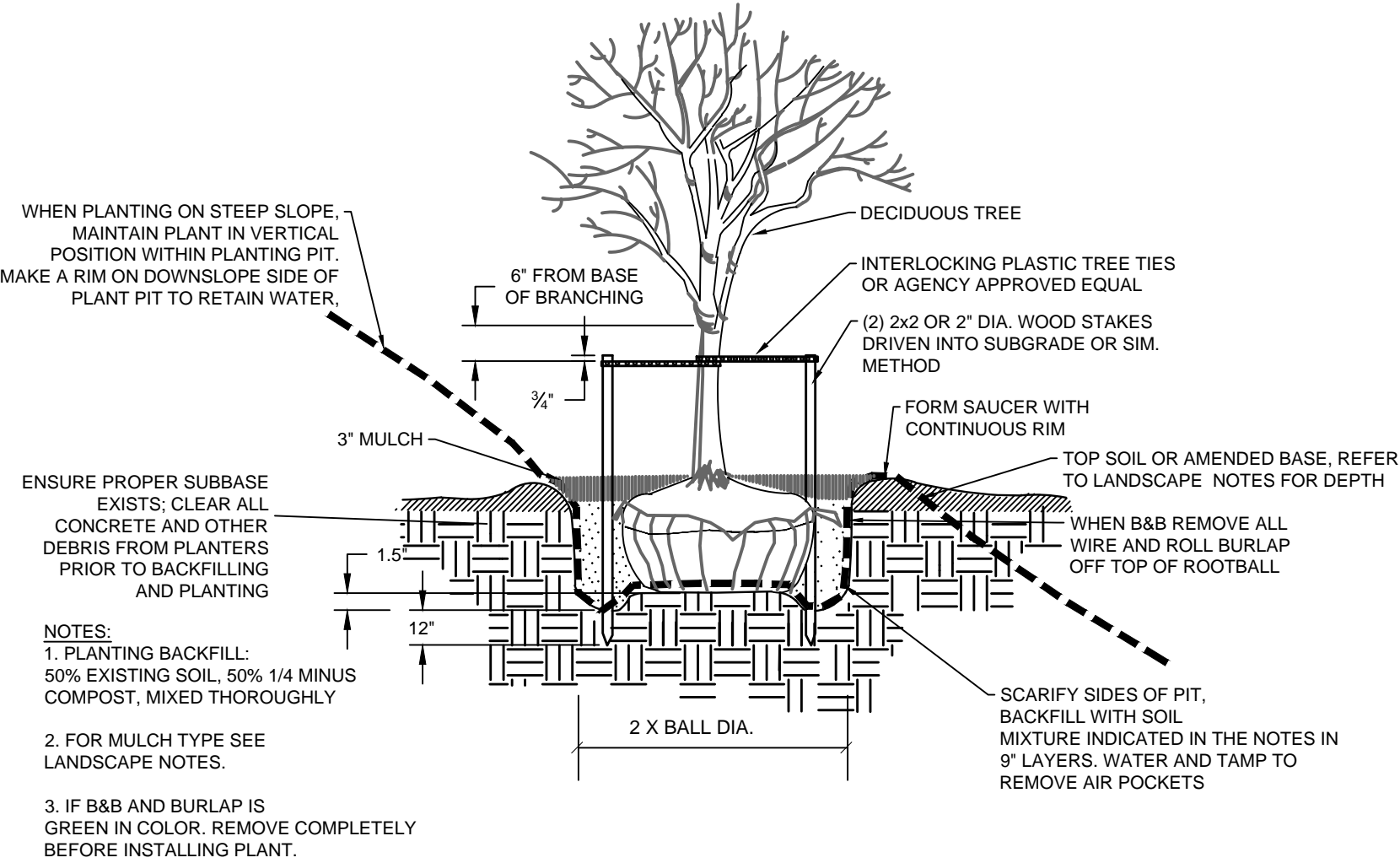
EVERGREEN TREE STAKING & PLANTING DETAIL

No Scale



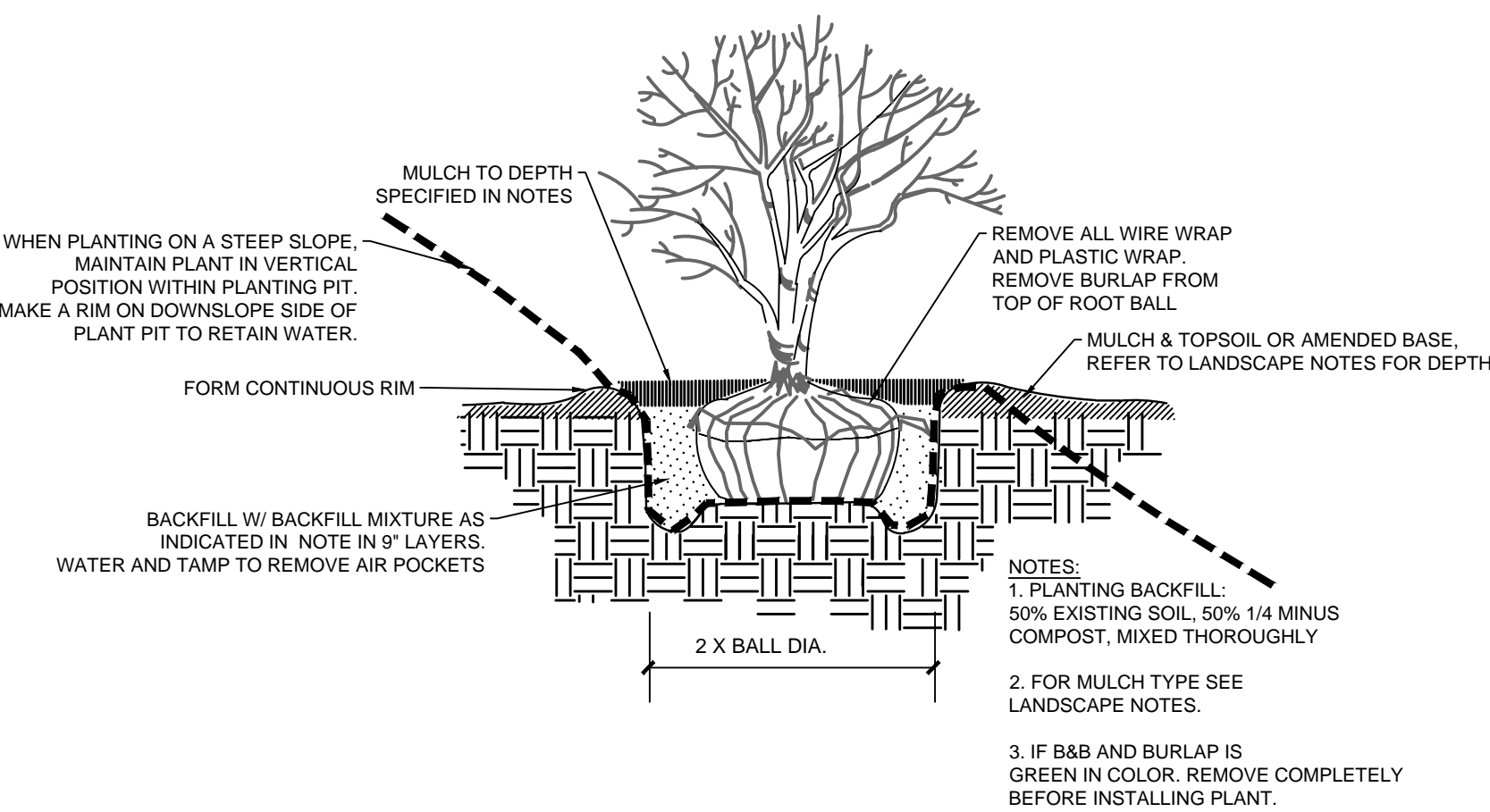
GROUNDCOVER PLANTING DETAIL

No Scale



DECIDUOUS TREE PLANTING & STAKING DETAIL

No Scale



SHRUB PLANTING DETAIL

No Scale



Know what's below.  
Call before you dig.



KINGSWOOD COMMERCIAL  
1551 Kingswood Dr. SW  
TUMWATER WA  
LDC, INC  
20210 142?? Ave NE  
Woodinville, WA 98072

PROJECT:

REVISIONS:

B REVISED PER COMMENTS 7/13/2022  
C. REVISED PER COMMENTS

DRAWING ISSUED FOR:  
AGENCY  
REVIEW

DATE: OCTOBER 26, 2022



PROJECT NO: 2232  
FILE NAME: 2232LSC  
DRAWN BY: KLO  
CHECKED BY: KLO  
X-REFS: NONE  
PLOT SCALE: 1:1  
DRAWING SCALES: N.T.S.

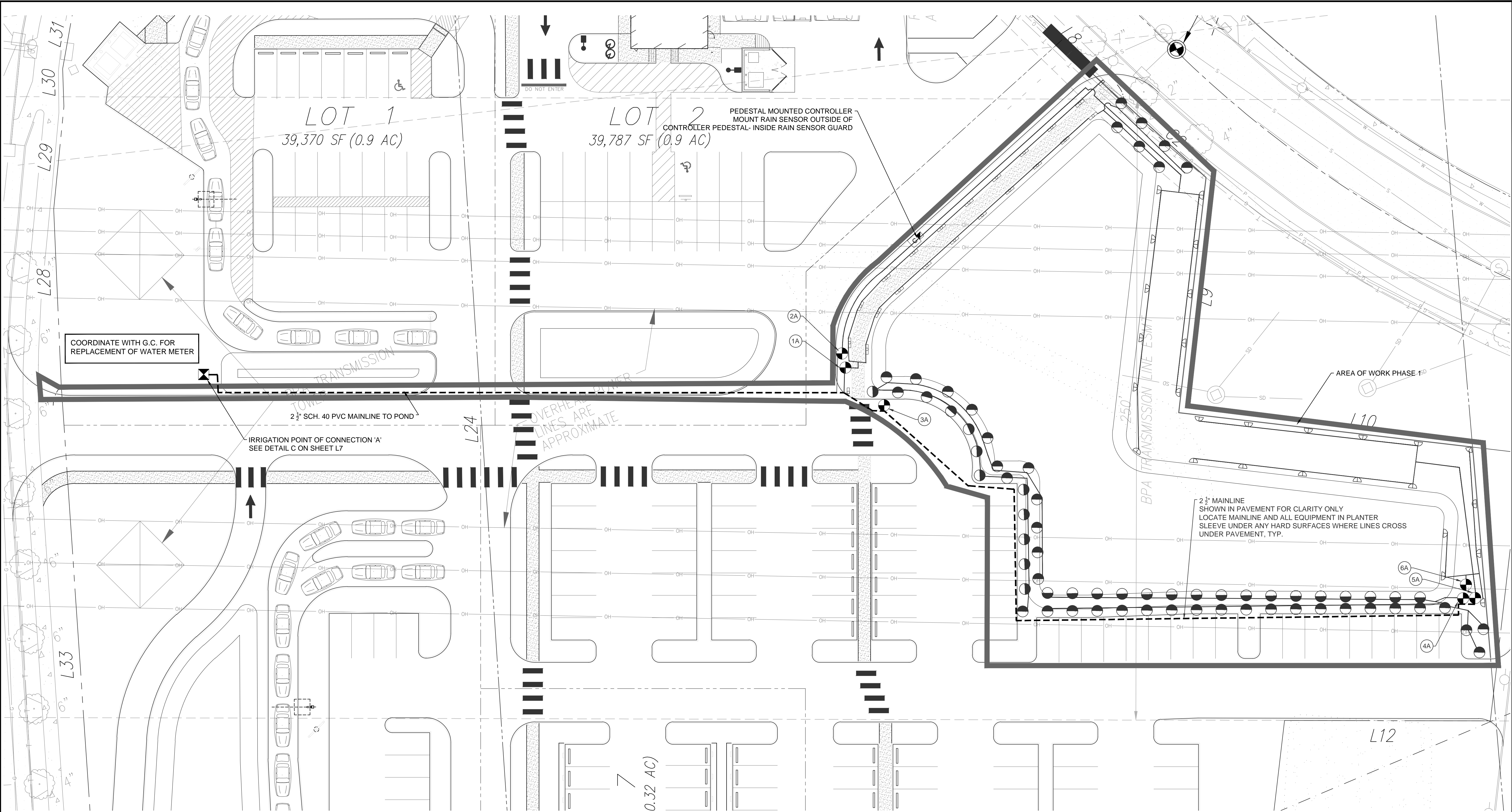
DRAWING CONTENTS

LANDSCAPE DETAILS & NOTES

DRAWING NO.:

L4

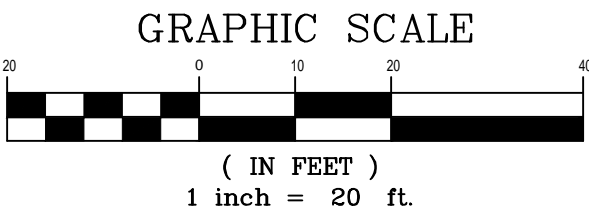




IRRIGATION NOTE:  
Back flow prevention is required on all fire services and irrigation services and in accordance with the AWWA Cross Connection Control Manual. A reduced pressure backflow assembly is required on all commercial domestic services per WAC 246-290-490. Please contact maintenance at 754-4150 for more information.



**NORTH PH 1 IRRIGATION PLAN**



**PROJECT:**  
**KINGSWOOD COMMERCIAL**  
**1551 Kingswood Dr. SW**  
**TUMWATER WA**  
**LDC, INC**  
**20210 142?? Ave NE**  
**Woodinville, WA 98072**

**REVISIONS:**  
B. REVISED PER COMMENTS 7/13/2022  
C. REVISED PER COMMENTS

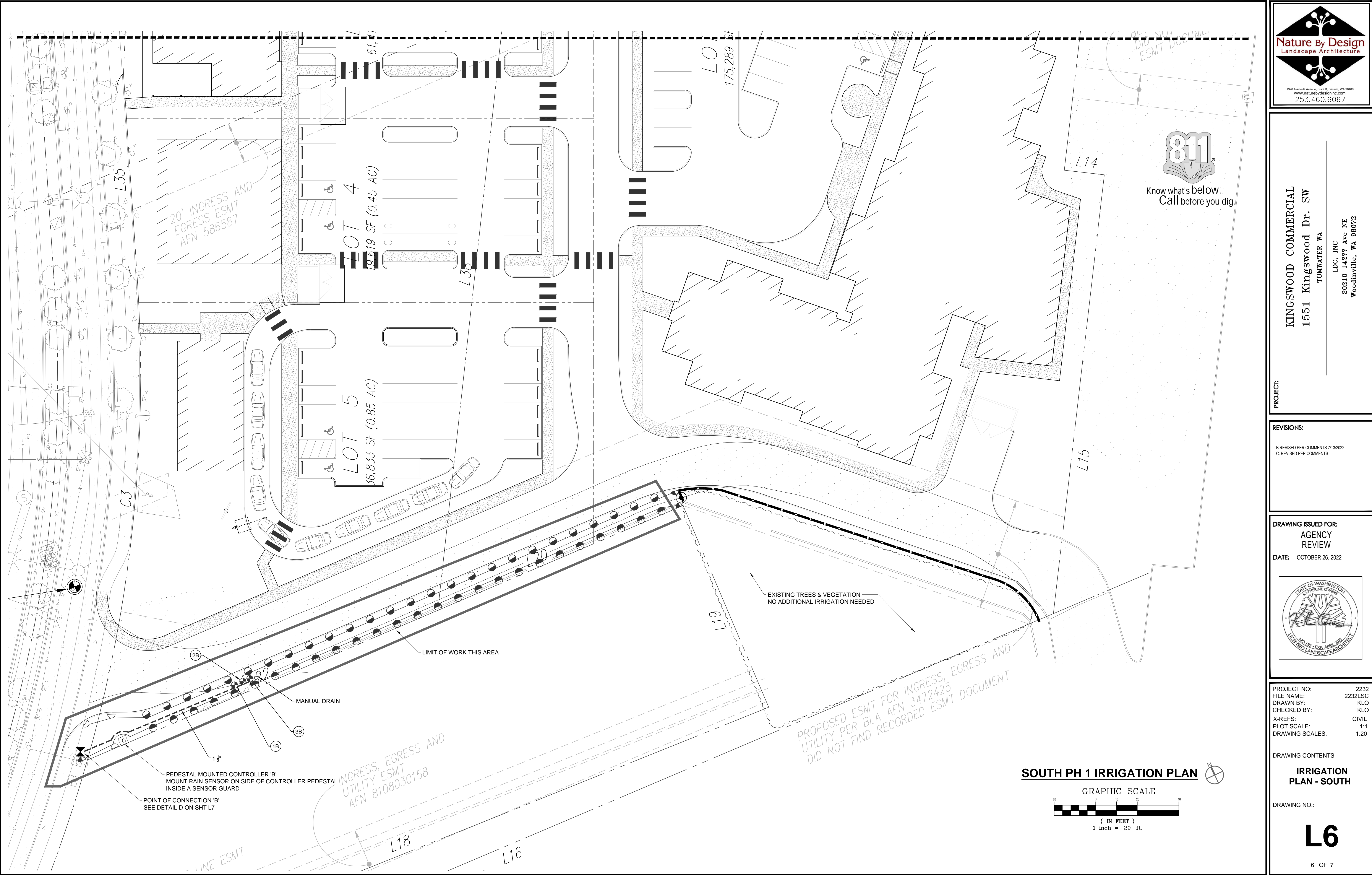
**DRAWING ISSUED FOR:**  
**AGENCY REVIEW**  
**DATE:** OCTOBER 26, 2022

**PROJECT NO:** 2232  
**FILE NAME:** 2232LSC  
**DRAWN BY:** KLO  
**CHECKED BY:** KLO  
**X-REFS:** CIVIL  
**PLOT SCALE:** 1:1  
**DRAWING SCALES:** 1:20

**DRAWING CONTENTS**  
**IRRIGATION PLAN-NORTH**

**DRAWING NO.:**  
**L5**  
5 OF 7

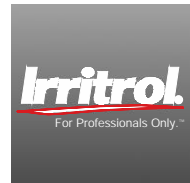
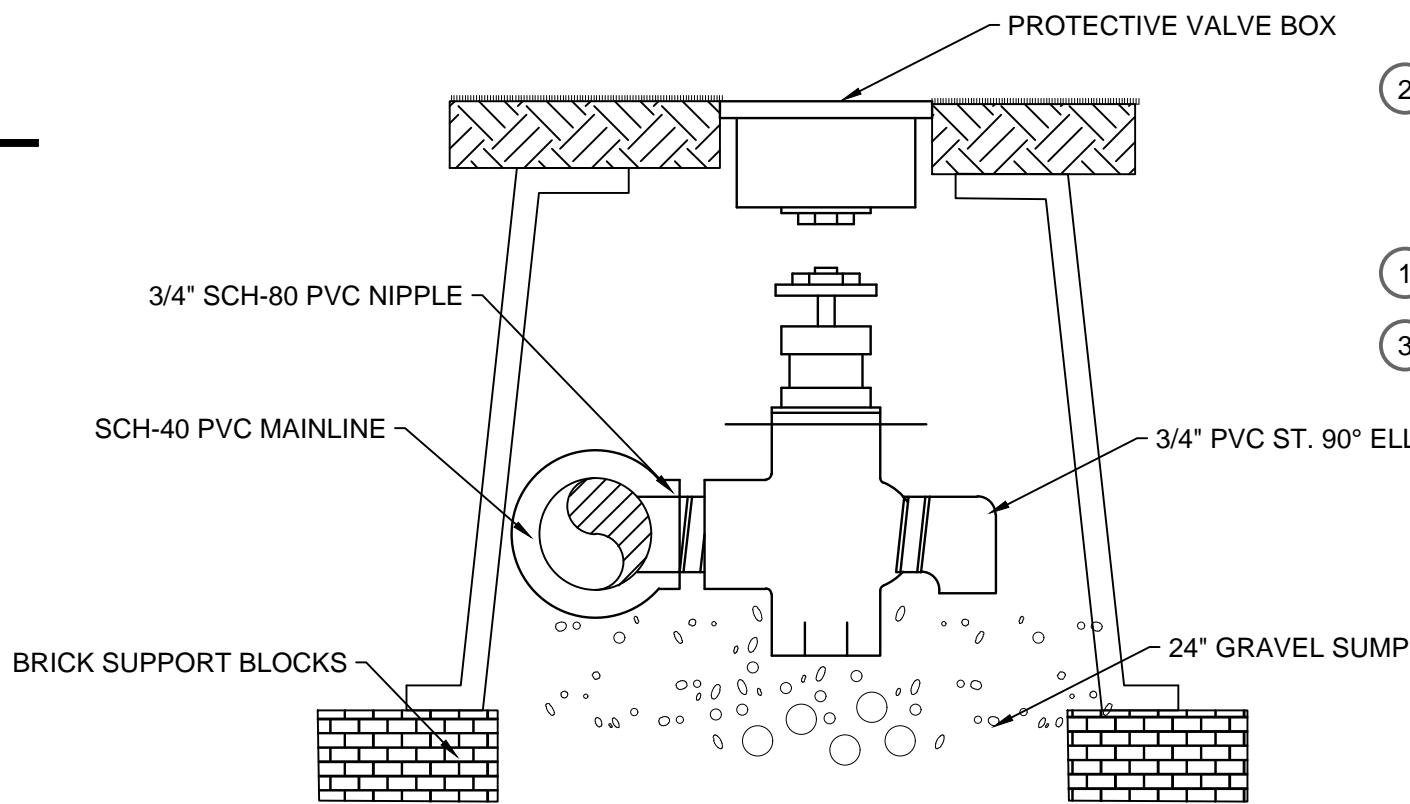
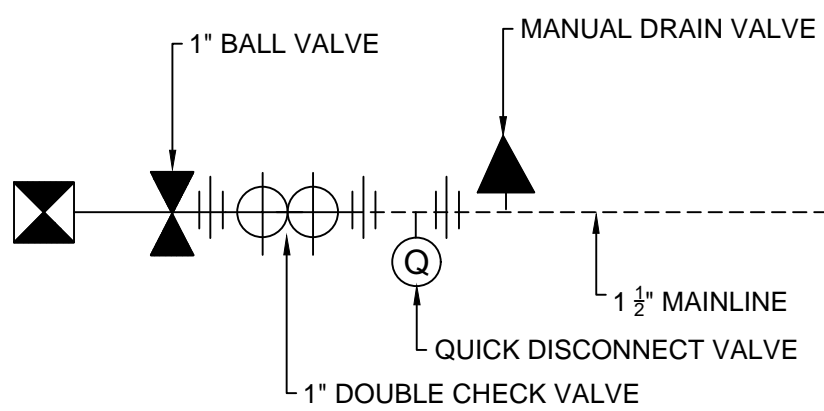
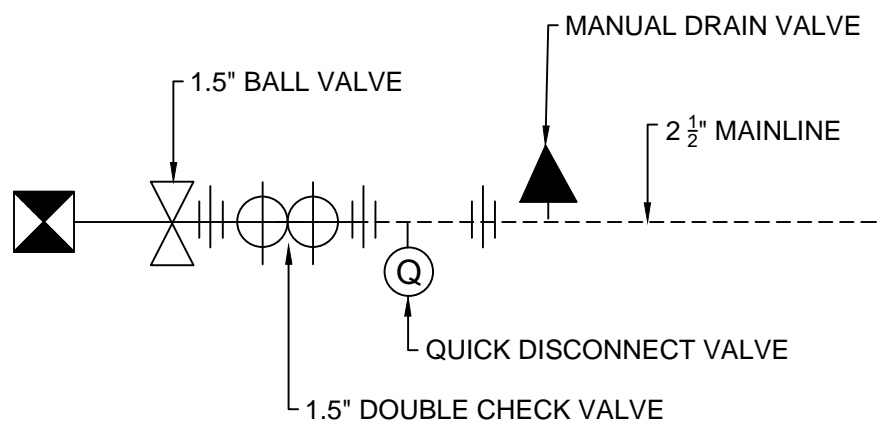
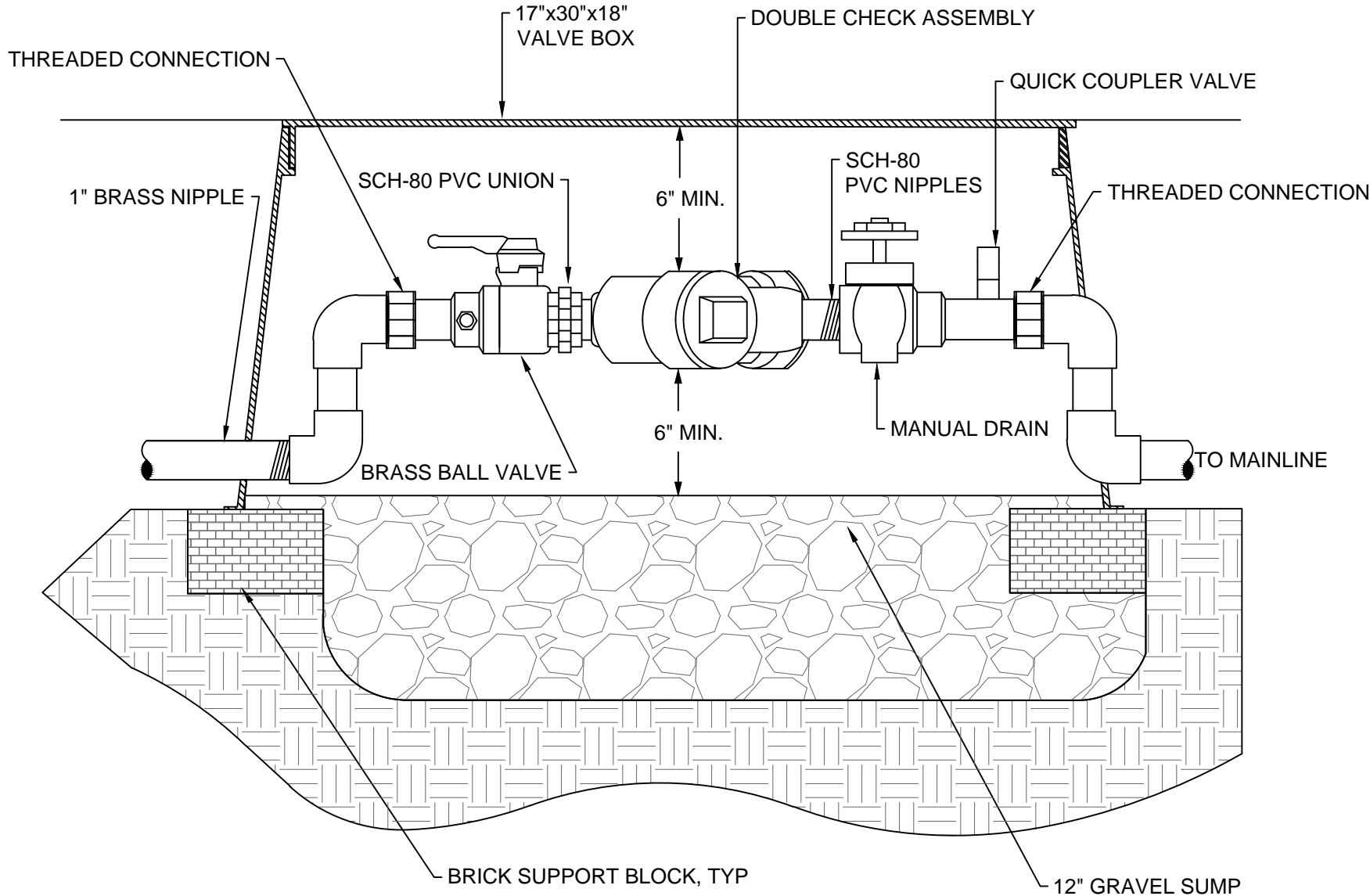
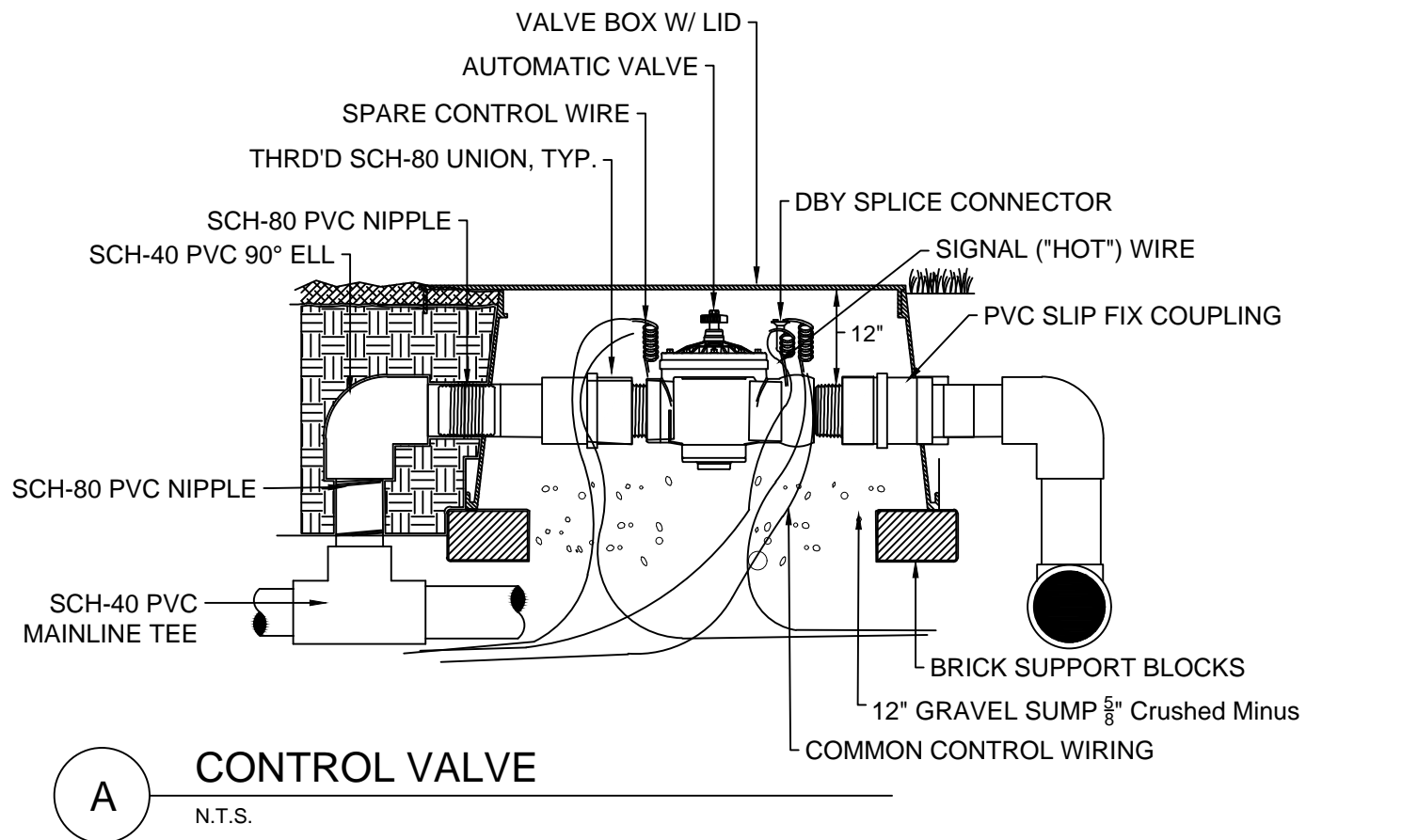




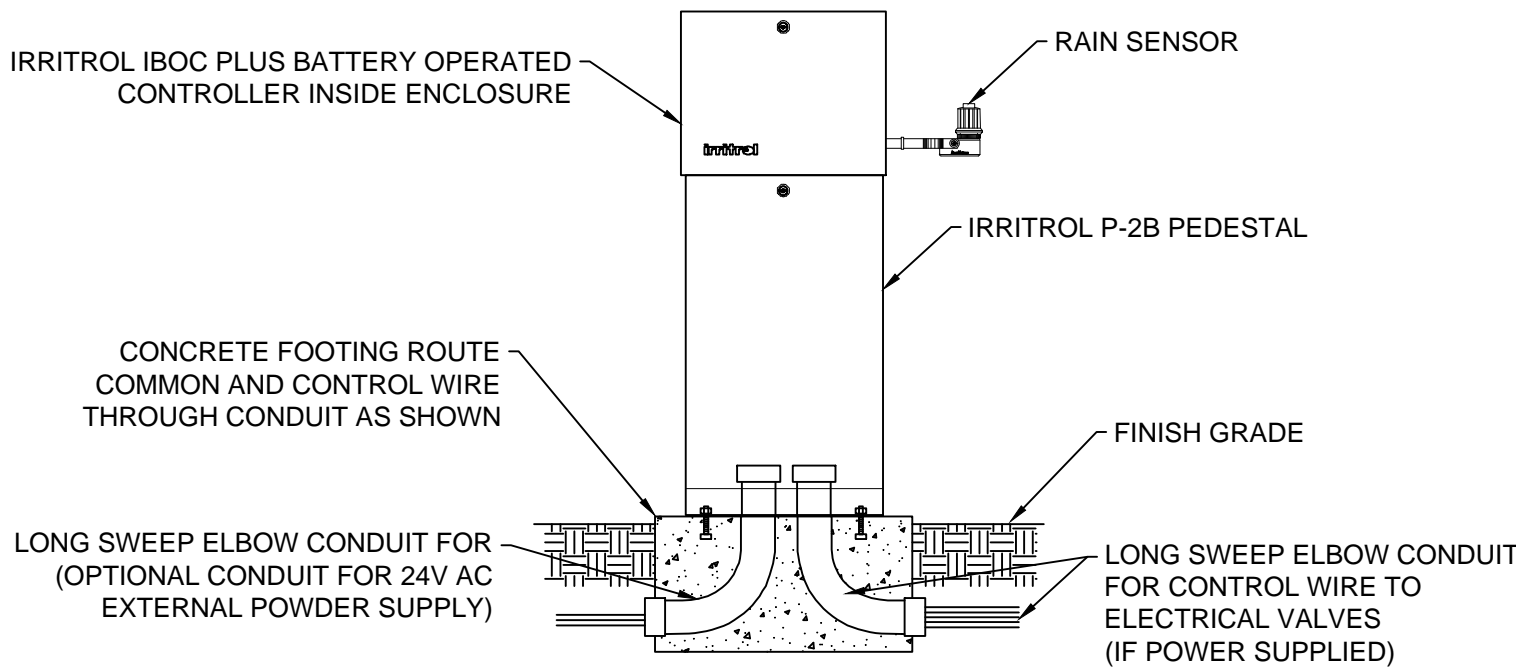




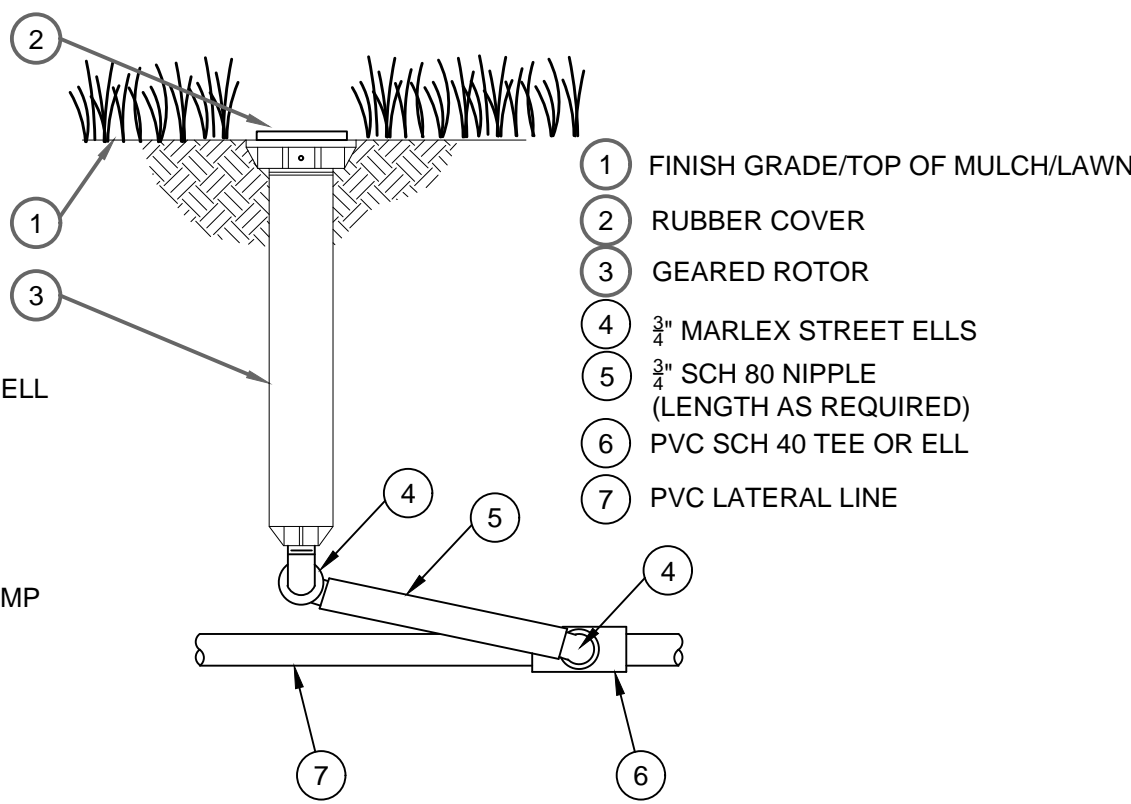
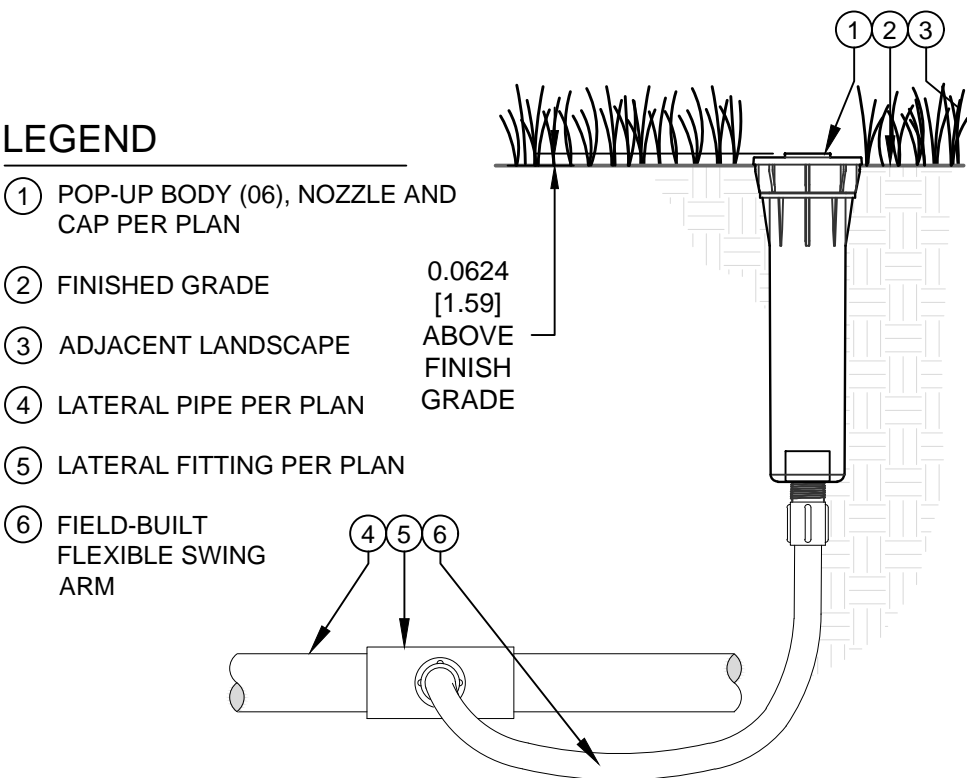
Know what's below.  
Call before you dig.



IRRITROL SYSTEMS  
5825 JASMINE ST.  
RIVERSIDE, CA 92504  
TOLL FREE: 1-800-634-8873  
PHONE: (951) 785-3454  
www.iritrol.com



- NOTES:
1. ALL ELECTRICAL WORK MUST CONFORM TO LOCAL CODES. REFER TO PRODUCT LITERATURE FOR ADDITIONAL INSTALLATION REQUIREMENTS.
  2. INSTALLATION TO BE COMPLETED IN ACCORDANCE WITH MANUFACTURERS SPECIFICATIONS.
  3. DO NOT SCALE DRAWING.
  4. THIS DRAWING IS INTENDED FOR USE BY ARCHITECTS, ENGINEERS CONTRACTORS, CONSULTANTS AND DESIGN PROFESSIONALS FOR PLANNING PURPOSES ONLY. THIS DRAWING MAY NOT BE USED FOR CONSTRUCTION.
  5. ALL INFORMATION CONTAINED HEREIN WAS CURRENT AT THE TIME OF DEVELOPMENT BUT MUST BE REVIEWED AND APPROVED BY THE PRODUCT MANUFACTURER TO BE CONSIDERED ACCURATE.
  6. CONTRACTOR'S NOTE: FOR PRODUCT AND COMPANY INFORMATION VISIT IRRITROL.COM



EQUIPMENT LEGEND				
CATALOG NUMBER	SYMBOL	DESCRIPTION	PSI	RADIUS
PGP ULTRA 04 MPR 25		HUNTER POP UP ROTARY SPRINKLER HEAD	40	30'
1806 PRS SAM 18		RAINBIRD POP UP SPRAY HEAD SPRINKLER	30	18'
1806 PRS SAM 15		RAINBIRD POP UP SPRAY HEAD SPRINKLER	30	15'
1806 PRS SAM 12		RAINBIRD POP UP SPRAY HEAD SPRINKLER	30	12'
1806 PRS SAM 10		RAINBIRD POP UP SPRAY HEAD SPRINKLER	30	10'
1806 PRS SAM EST		RAINBIRD POP UP SPRAY HEAD SPRINKLER	30	5'X15'
1806 PRS SAM SST		RAINBIRD POP UP SPRAY HEAD SPRINKLER	30	5'X30'
150BBVTF 1.50"		HAMMOD FULL PORT BRASS BALL VALVE		
100BBVTF 1.00"		HAMMOD FULL PORT BRASS BALL VALVE		
850 SERIES		FEBCO DOUBLE CHECK VALVE, 1 EACH		
44 NP-1.00"		RAINBIRD QUICK COUPLING VALVE W/ MATCHING KEY		
76SV-0.75"		LAWN LIFE MANUAL DRAIN VALVE W/ RISING SWIVEL		
700 SERIES ULTRA FLOW		IRRITROL AUTO CONTROL VALVE W/ DC LATCHING SOLENOID		
IBOC PLUS SERIES		IRRITROL BATTERY POWERED CONTROLLER, 1 EACH, 4 AND 8 STATION IN PEDESTAL SS ENLCOSURE (P-2B)		
RAIN CLICK		HUNTER AUTO-RAIN SENSOR OR EQUIV. MOUNTED ON TOP OF TREATED POST AT CONTROLLER LOCATION		
195101-17"x30"x18"	NONE	BACKFLOW BOX W/ LOCKING LID		
190106-14"x20"x12"	NONE	DRIP CONTROL VALVE BOX W/ LOCKING LID		
181104-9"x10"	NONE	GATE AND MANUAL DRAIN VALVE BOX W/ LOCKING LID		
SCH-40	---	SOLVENT WELD PVC MAINLINE, SIZE AS SHOWN		
CL-200	---	SOLVENT WELD PVC LATERAL, SIZE AS SHOWN		
SCH 40 PVC 3/4"	---	SOLVENT WELD PVC LATERAL LINE		
SCH-40	=====	SOLVENT WELD PVC SLEEVING, SIZE AS SHOWN		
14UF-1	NONE	DIRECT BURY CONTROL WIRING, USE WHITE FOR COMMON, RED AS SIGNAL AND YELLOW FOR SPARES		

VALVE SCHEDULE				
NO.	GPM	SIZE	AREA	TYPE OF ZONE
A1	19.81	1.50	SHRUB	SPRAY HEAD
A2	26.07	1.50	SHRUB	SPRAY HEAD
A3	22.00	1.50	SHRUB	SPRAY HEAD
A4	19.54	1.50	SHRUB	SPRAY HEAD
A5	23.70	1.00	SHRUB	SPRAY HEAD
A6	14.22	1.50	SHRUB	SPRAY HEAD
B1	18.79	1.00	SHRUB	SPRAY HEAD
B2	17.77	1.00	SHRUB	SPRAY HEAD
B3	17.77	1.00	SHRUB	SPRAY HEAD
NOTE: THERE ARE (2) THREE CONTROLLERS				

#### IRRIGATION NOTES

1. Irrigation system engineering based on a 1.5" water meter for P.O.C. 'A' and a 1.00" water meter for P.O.C. 'B'. Both have a static water pressure of 60.0 LBS. The installer to verify adequate static water pressure at time of installation.
2. Irrigation lines are that are shown within hard surface areas for clarity, shall be located within landscape planting areas or underground sleeves. All valves shall be installed within protective boxes installed flush and level with finished grade.
3. Install all equipment per state and local codes (City of Tumwater). Call Line Locaters prior to digging at 1-800-424-5555. The installer shall be responsible for all permits, tests and inspections as required.
4. See civil drawings to verify all utility locations.
5. Install manual drains at all low points and record all locations on the "Record Drawings".
6. Adjust radius on all sprinkler heads to maximize the coverage and minimize overspray on all hard surfaces. Add anti-drain check valves to low heads to eliminate drainage and run-off.
7. Mainline & wiring to have a minimum cover of 18" and all lateral piping 12".
8. Prior to backfill, the main line is to be pressure tested at 75 lbs. for (1) one hour with '0' loss. The completed test is to be turned over to the General Contractor.
9. Use select "rock free" native soil or clean sand to backfill all trenches and compact to 85% density for landscape areas and 95% for areas under concrete or asphalt.
10. The back flow assemblies are to be certified by a State Licensed BAT. The completed forms are to be turned in to the City of Tumwater. And a copy of the certification shall be delivered to the project proponent.
11. Install the controllers at locations indicated on the plans and per detail this sheet. Provide a 12"x15"x4" concrete pad for the controller pedestal to mount on. Verify any conduit needed for pad prior to pouring
12. As part of the contract, the landscape contractor is to winterize in the fall and activate the system in the spring for one year.
13. From controller 'A' install (2) two spare Yellow wires to each valve No. 1A and 8A. From controller B install (2) two spare yellow wires to valve no. 3B and Note: all control valve boxes shall have the spare yellow wires visible inside.
14. Do not splice the red signal wire between the controller and the control valve. Wire splices shall be within the valve boxes only using 3M-DBY splice kits.
15. All control valves shall be tagged using plastic marking numbers. Number valves as per plan.
16. The installer shall provide to the owner an exact 'As-Built' drawing of the installed system
17. As part of the contract, the installer shall perform (1) one each on the system. Spring Start Up and Winterization. The Spring Start Up shall include the complete review of the system to ensure it is operating correctly. Adjust and repair as required. Damage due to vandalism or other destruction, are not under warranty. Any manufacture or installer repairs are at installer's expense.



KINGSWOOD COMMERCIAL  
1551 Kingswood Dr. SW  
TUMWATER WA

LDC, INC  
20210 142?? Ave NE  
Woodinville, WA 98072

PROJECT:

#### REVISIONS:

B REVISED PER COMMENTS 7/13/2022  
C. REVISED PER COMMENTS

DRAWING ISSUED FOR:  
AGENCY  
REVIEW

DATE: OCTOBER 26, 2022



PROJECT NO: 2232  
FILE NAME: 2232LSC  
DRAWN BY: KLO  
CHECKED BY: KLO  
X-REFS: CIVIL  
PLOT SCALE: 1:1  
DRAWING SCALES: N.T.S.

DRAWING CONTENTS

IRRIGATION  
NOTES &  
DETAILS

DRAWING NO.:

L7