

Climate Element 2025 Comprehensive Plan Update

*Balancing Nature and Community:
Tumwater's Path to Sustainable Growth*



Alyssa Jones Wood, Sustainability Coordinator

Joint City Council and Planning Commission Work Session, July 9, 2024

Intent



Discuss the City's approach to addressing recent State requirements to add a new Climate Element to the Comprehensive Plan as part of the periodic update

New State Climate Element Requirements

1. A **climate mitigation sub-element** to address actions to reduce overall greenhouse gas emissions and vehicle miles traveled
2. A **climate resilience sub-element** to address climate adaptation
3. Consideration of **environmental justice** to avoid worsening environmental health disparities



1. Climate Mitigation Sub-Element

- Climate mitigation addresses greenhouse gas emission (GHG) reductions that involve actions taken to eliminate the emissions of GHGs to reduce the rate and extent of climate change damage
- GHGs include carbon dioxide, methane, nitrous oxide, HFCs, and any other gas or gasses designated by the State



1. Climate Mitigation Sub-Element

- New requirements include adding goals and strategies that lead to achieving Net-Zero Emissions by 2050, consistent with Washington's statewide target
- These requirements are above the current GHG reduction goals in the Thurston Climate Mitigation Plan adopted by the City Council in 2021



1. Climate Mitigation Sub-Element

- The Thurston Climate Mitigation Plan will be incorporated into the Climate Mitigation Sub-Element
- Additional goals and strategies will be added to bridge the gap between the TCMP goals and State's net-zero by 2050 goals



Climate Mitigation Pathways

Pathway 1

Conduct GHG Emissions Estimate

Develop GHG reduction goals and policies using Ecology framework.

Pathway 2

Conduct Vehicle Miles Traveled (VMT) Study or Evaluation

Develop per capita VMT/GHG reduction goals and policies. Only transportation emissions sources are evaluated.

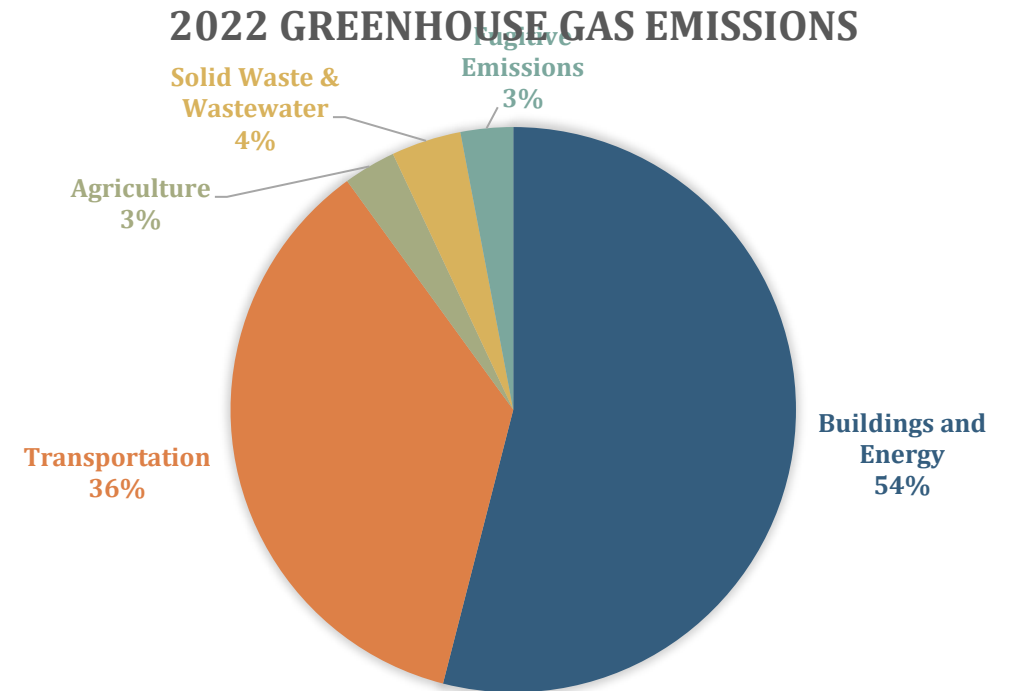
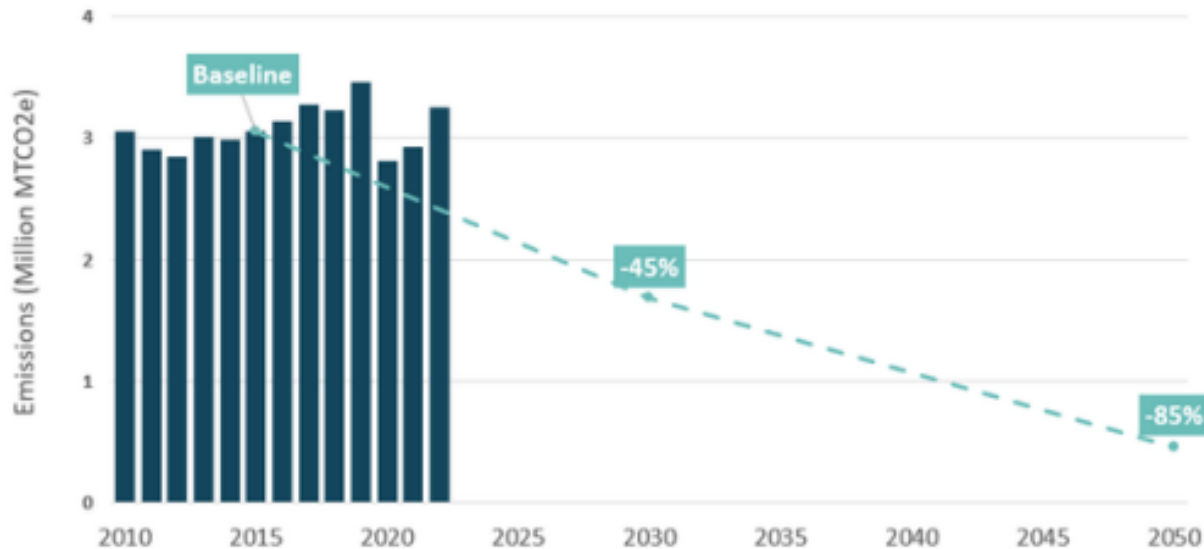
Pathway 3

Create GHG Emissions Inventory

Develop GHG reduction goals and policies based on emissions inventory modeling results.

Integrate goals and policies into comprehensive plan

Thurston County 2022 GHG Inventory



2022 Thurston County GHG Emissions were ~6.2% HIGHER than the 2015 baseline

2. Climate Resilience Sub-Element



2. Climate Resilience Sub-Element

- The Thurston Hazards Mitigation Plan is in substantial conformance with the State Guidance
- In addition, actions from the Thurston Climate Adaptation Plan will be updated and incorporated into the sub-element
- Staff and consultants will also utilize the Department of Commerce Climate Element Workbook to ensure any gaps between state requirements and previously developed content from the Thurston Hazards Mitigation Plan and/or Thurston Climate Adaptation Plan will be investigated and addressed



11 sectors



Agriculture &
Food Systems



Buildings &
Energy



Cultural
Resource



Economic
Development



Emergency
Management



Health &
Well-being



Ecosystems



Transportation



Waste
Management



Water
Resources



Zoning &
Development

- There must be at least one goal per sector

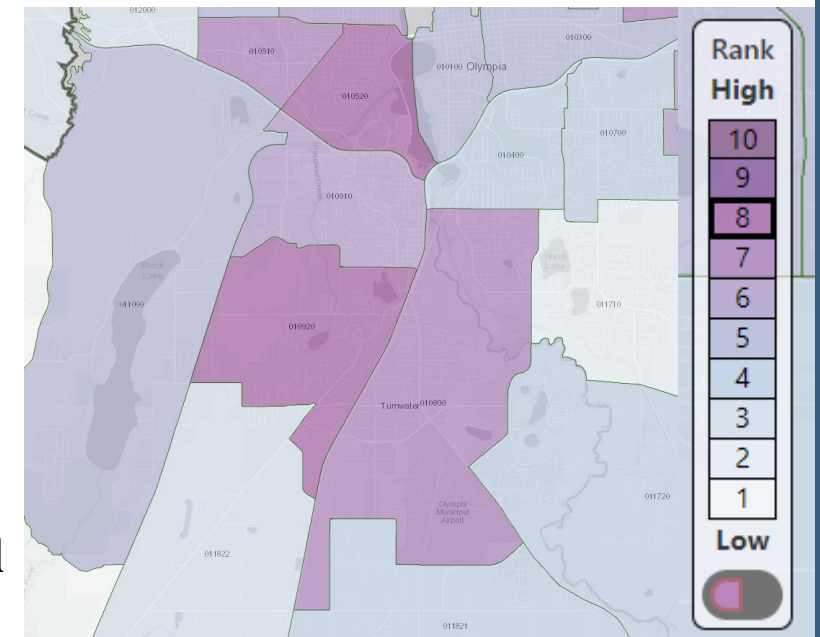
3. Environmental Justice

The Climate Element must:

- Prioritize GHG reductions in overburdened communities
- Prioritize climate resilience in communities that will disproportionately suffer from compounding environmental impacts



WA
DOH Environmental
Health Disparities



Progress To Date

1. Hired EXP as consultant
2. Thurston Climate Mitigation Collaborative (TCMC)
Community Advisory Workgroup Visioning and Values
Exercise
3. Draft Community Engagement Strategy
4. Climate Policy Advisory Team
5. Open House Scheduling



EXP Team

EXP is a
multidisciplinary
planning, design
engineering, &
firm



Keren Bolter, PhD
Project Manager

Keren has > 20 years of experience leading climate initiatives which bridge the information-action gap. She is a professor at PSU and has been a planner in local government



Louis Spanias ENV SP
Sustainability Lead

Louis has 10+ years of experience leading decarbonization, climate adaptation and resilience projects



PRIME CONSULTANT

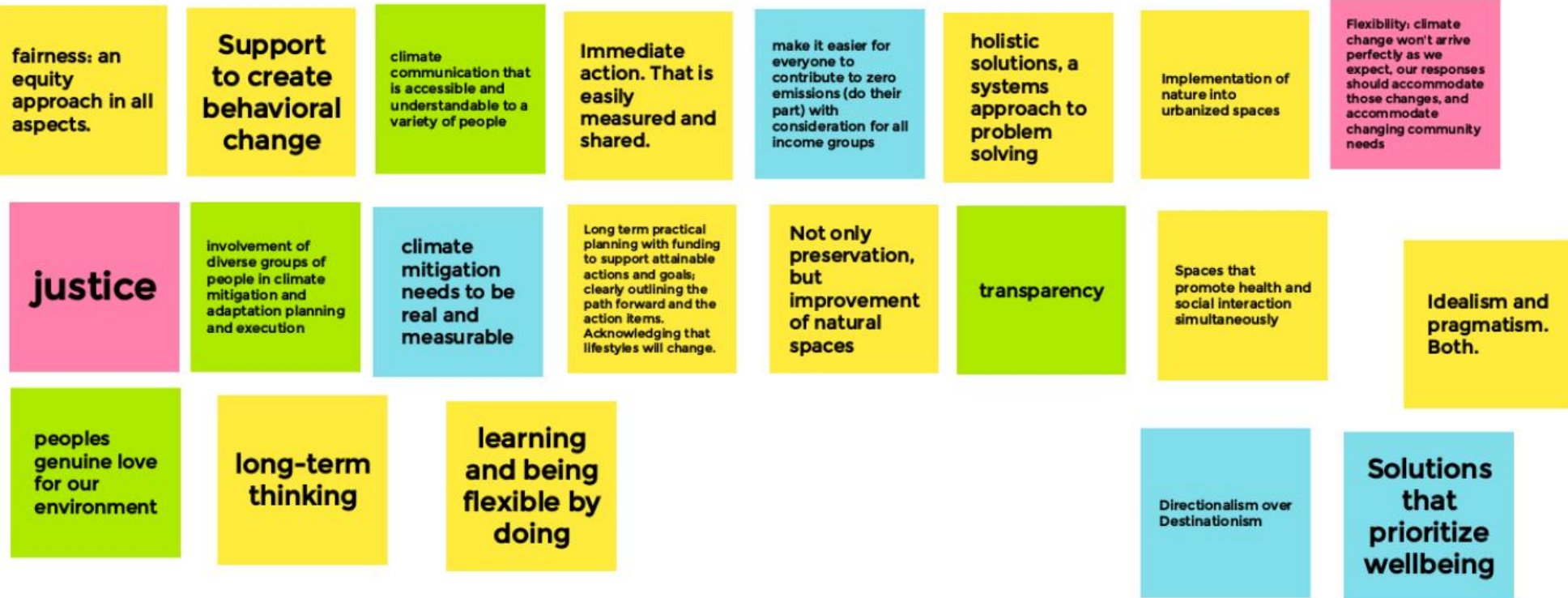


SUBCONSULTANT

**CUMMING
GROUP**

TCMC Community Advisory Workgroup Visioning

I value... (in climate action work and resiliency)



I want... (in climate action work and resiliency)

to see
vegetation
EVERYWHERE

Clarity and
commitment by
leadership and all
community members.
Real conversations &
plans that move
towards action items.
Urgency. Change.

to invest in local
food systems both
as a mitigation
effort, but also
because of the
increased likelihood
of multi-crop
failures globally.

Decrease
roads in
size

More
trees

To be able to
get around
the county
without
having to
drive

More outdoor
pedestrian
centers, but
not strip malls
:)

leadership

anti-siloing of
environmental
agencies, advocacy
groups, etc. more
connection and
communication!!

more free
educational
events on
climate
change and
related issues

To be able to
bike safely
and easily in
the county

neighborhoods of
diverse incomes

Remove the need
for lawns in many of
our neighborhoods

everyone to
find their
unique role in
supporting
climate action

To have
mandatory
composting

Reduce or
remove these
huge parking
lots

Facilitated
community
activities to
community asset
mapping and
resource sharing
during emergencies
and climate events.

bold
vision

More pilots,
experimental
programs, to
be a leader as
a city

a diverse, inclusive
community that is
having success at
mitigating GHG

willingness to
break
boundaries
and rules for
the greater
good

bike safely
anywhere in
the
community

more use of
wood as a
building
material
(renewable
resource)

100%
clean
energy

Roadways and
streets that
are pleasant
to walk and
roll through
without a car

sense of
common
purpose,
community
cohesion

To use the climate
crisis as a needed
impetus towards
healthier lifestyles,
closer relationships,
and ultimately a
stronger, thriving
community.

working
together to
prevent harm
and protect
each other
from harm

willingness to
take
necessary
risks

Safe walkable
communities

embrace new
cultural norms that
are environmentally
conscious

Improved access to
basic needs like
healthcare, more
accessible
healthcare systems,
health care systems
prepared for climate
events

more climate
research
opportunities and
funding, especially
on social science
studies of climate
change

a large-scale
climate
coalition :)

more options
for recycling
or getting
waste out of
the landfills

Strengthened
emergency
response
programming,
including
community
response teams, etc.



What do you hope will be true about the Thurston Region in the future?



What do you want to see preserved?



What do you want to see improved, enhanced, or created if it doesn't exist now?



Action
Engagement Strategy
Resilience Updates
Involvement Inclusion Sustainability
Comprehensive Planning
Change Tumwater Equity
Education Outreach Sustainability
Analysis Updates Growth Passion
Education Climate Element
Goals Equity Diversity
Community Tumwater



Community Engagement Strategy Goals

1. Understand why and how residents think services and processes need to change and develop to increase GHG reduction and climate resilience
2. Engage the broader community, ensuring sufficient representation from diverse groups through in-person, virtual, or hybrid outreach and both digital and printed resources
3. Meet people where they are and ensure that all engagement efforts are accessible and equitable – This means not excluding anyone with certain health, physical, or working conditions, and it requires that needs around language, mobility, or family care are thoughtfully addressed



Community Engagement Strategy Goals

4. Keep the energy positive and focus on success stories, while also stressing the need for action and potential risks
5. Support clear and consistent messaging to current and potential stakeholders that communicates the importance of the Climate Element
6. Be responsive to community insights and allow for shared influence between communities and the organizations that serve them
7. Focus on reducing inequalities and fostering greater community ownership of the Climate Element which will lead to equitable outcomes to benefit frontline communities



Community Engagement Strategy Goals

8. Seek how best to intentionally allocate resources to overcome the cumulative impacts of institutional racism on historically underserved and under-represented people
9. Articulate Tumwater's role as a climate leader, aligning with County and State priorities and harnessing local experience and expertise
10. Position Tumwater City staff and residents to make better-informed decisions, driving smarter investments to that the City develops safely in a healthier environment, even with growing climate impacts



Community Engagement Strategies

- Community-wide surveys
- Open houses and public workshops
- Small-group workshops or community dialogues
- Pop-up events and door-knocking
- Passive engagement



Accessibility
and inclusion



Relationship
building



Alignment with
stakeholders
and policy



Representation
and equity



Robustness and
wholeness

Engagement Themes and Topics (1 of 2)

Themes/Topline Messages	Pertinent Topics or Priorities
Characterization/Background	<ul style="list-style-type: none">• Every fraction of a degree of warming matters• Net-Zero by 2050• Regulatory and legislative drivers (e.g. CCA, CETA, GMA, etc.)
Planning Process	<ul style="list-style-type: none">• Internal group activities and priorities (e.g. City Departments, Elected Officials, Staff, etc.)• Community-wide activities, priorities, and advisory (CPAT, Open Houses, etc.)
Fact Base/Analysis	<ul style="list-style-type: none">• Climate change (e.g. human activities, local and global impacts)• GHG emissions• Climate vulnerability, risk, adaptation, and resilience
Equity	<ul style="list-style-type: none">• Identifying, understanding, and addressing existing disparities and gaps across demographics, socioeconomic status, race, ethnic, and gender identity, ability, etc.• Climate hazard sensitivity and exposure for frontline communities

Engagement Themes and Topics (2 of 2)

Themes/Topline Messages	Pertinent Topics or Priorities
Goals	<ul style="list-style-type: none">• Short- and long-term emissions reduction (community-wide and municipal)<ul style="list-style-type: none">• Transportation• Land Use• Climate resilience and adaptation<ul style="list-style-type: none">• Overarching goals• Sector – and asset-specific goals
Policies	<ul style="list-style-type: none">• Governance and leadership• Communication, education, and outreach• Land use, zoning, and development• Food and agriculture systems• Urban forests, watersheds, and ecosystems• Transportation and mobility• Buildings and energy• Consumption and solid waste• Water supply, wastewater, and stormwater• Health, hazard mitigation, and emergency management<ul style="list-style-type: none">• Focus on wildfire, extreme heat, flooding, etc.
Implementation	<ul style="list-style-type: none">• Roles and responsibilities• Interorganizational coordination• Prioritization (criteria)• Feasibility (cost estimation, labor capacity, etc.)• Monitoring and evaluation



Engagement Phases and Schedule

Phase	Description and Activities	Timeline
Listening	Open house, CPAT kickoff and Feedback requests	Summer 2024
Visioning	TCMC CAW Presentation	September 2024
Strategizing	Briefing and work sessions with the Planning Commission on draft Climate Element and related updates to other Plans and Elements including TMC	Through March 2025
Finalizing	Briefings with General Government Committee and work sessions with City Council on draft Climate Element and related updates to other Plans and Elements	Through March 2025

Climate Policy Advisory Team

Government

City staff and departments
County government
Tribal Nations
Public agencies

Affected Populations

BIPOC
Youth and elderly
Low-income
Workers and labor unions
People with disabilities
Immuno-compromised

Community

Local businesses
Non-profit organizations
Community-based organizations
Charities
Religious groups

Expertise

Colleges/universities
Research organizations
City consultants
Advocacy groups



Climate Policy Advisory Team

CPAT Member	Category	Affiliation (if any)
Anna Stusser	Affected Populations	SEIU775 Service Employees International Union
Anthony Levenda	Expertise	Evergreen Center for Climate Action & Sustainability
Bernie Gertje	Government	City of Tumwater Transportation Engineer
Clint Bryson	Affected Populations	International Brotherhood of Electrical Workers (IBEW) 76 Leadership
Gordon Wheat	Expertise	Physicians for Social Responsibility
Graham Clumpner	Community	Oil Gas Action Network & Tumwater Resident
Janine Linsey	Expertise	Thurston Climate Action Team & Tumwater Property Owner
Jessie Simmons	Community	Olympia Master Builders
Kerri Wilson	Government	Intercity Transit Walk N Roll & Tumwater Resident
Lynn Fitz-Hugh	Expertise	Restoring Earth Connections & Friends of Trees
Morris McKellery	Affected Populations	Tumwater Resident
Rachael Childs	Affected Populations	Homes First
Taylor Werner	Affected Populations	International Brotherhood of Electrical Workers 46 Rank and File Member



Accountability to CPAT and Community

CPAT Feedback

The open house needs to feel welcoming - advertise that food will be provided for attendees and hold the open house at a location other than an official City building

Engagement needs to be more than one open house – Examples: table at parks, table at the Department of Social and Health Services, and/or door-knock in neighborhoods that are more disadvantaged and/or overburdened

Focus more on the urban forests of Tumwater as part of both mitigation and adaptation to climate change

Include Youth

Distribute a save the date flyer that clearly communicates how people will be expected to participate and how the City will be accountable to what they hear

Provide space both for table activities and a large group listening session – Provide options for people to engage who may be less likely to speak aloud

Staff Follow Up

Staff are committed to providing food at the Open House and advertising that food will be provided

Staff has booked ASHHO Cultural Community Center for the open house

Staff and CPAT members will work together to identify opportunities for tabling and/or door-knocking and will work on that outreach together.

WRS Staff has a tabling event scheduled in the summer at the Tumwater satellite location of the Thurston County Food Bank

The contributions of urban forests will be included at Open House tables on mitigation and adaptation

Staff has reached out to the Thurston Youth Climate Coalition about attending/facilitating a special youth caucus at the Open House

Staff and the consultant team are working to develop a save the date flyer with this information

Staff and CPAT members will distribute the flyer early throughout the community once it is finalized

Staff and the consultant team will incorporate a large group listening session at the end of the open house agenda with boxes with paper/pen will be available for community members to engage without speaking if that is their preference

The online open house will also be advertised as an option for sharing feedback outside of the one-night Open House event



Hybrid Climate Element Open House

In Person

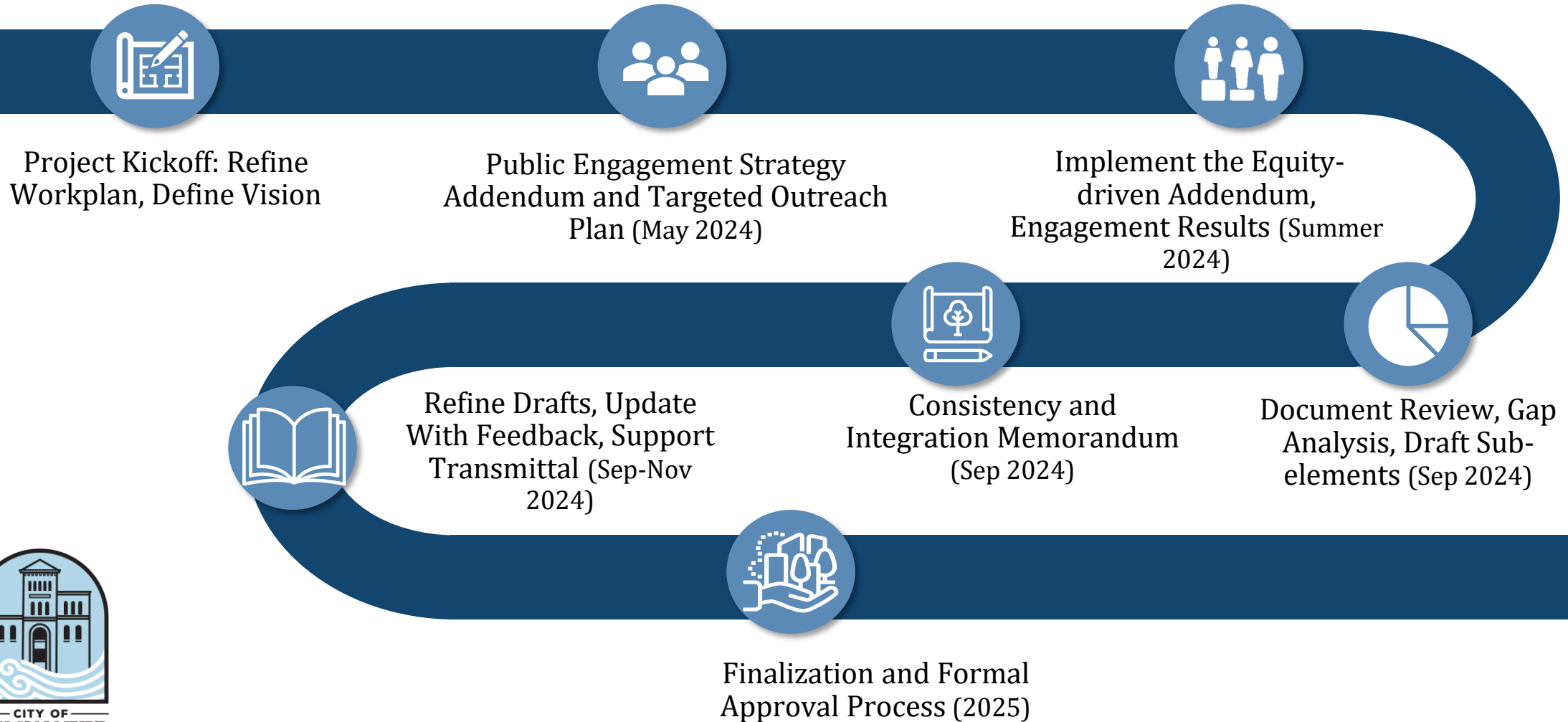
- August 14, 2024, from 7 p.m. to 9 p.m.
- ASHHO Cultural Community Center
- Will include online registration to get headcounts for food

Virtual/Online

- August 15 - September 30, 2024
- Available 24/7
- Translatable using google translate
- Hosted as an online storymap



Schedule



Project Web Site

Balancing Nature & Community

Tumwater's Path to Sustainable Growth

Every ten years, the City is required by the state to conduct a periodic update of its Comprehensive Plan and related development regulations to ensure that they comply with the Growth Management Act and respond to changes in the City.

GET INVOLVED	+
PROJECT SCHEDULE	+
PUBLIC ENGAGEMENT	+
CITY MEETINGS	+
DRAFT ELEMENTS	+
GUIDANCE DOCUMENTS	+
CITY PRESENTATIONS	+
CITY PUBLIC ENGAGEMENT	+
CITY STAFF REPORTS	+



All documents related to the periodic update are on the [City's periodic update webpage](#), including:

- Information on all meetings
- State guidance materials
- Drafts of the Elements as they are prepared
- Staff reports and presentations

Submitting Comments or Questions

Written comments or questions are welcome at any time during the periodic update process

- The periodic update email is compplan@ci.tumwater.wa.us
- City of Tumwater Contact:
Brad Medrud, AICP
City of Tumwater Planning Manager
Community Development Department
555 Israel Road SW
Tumwater, WA 98501
Phone: 360-754-4180
Email: bmedrud@ci.tumwater.wa.us



Discussion Questions

- What are the City Council's values and visions for the Climate Element?
- Is there anything missing from our engagement strategy that needs to be addressed?

