


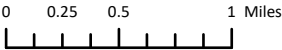


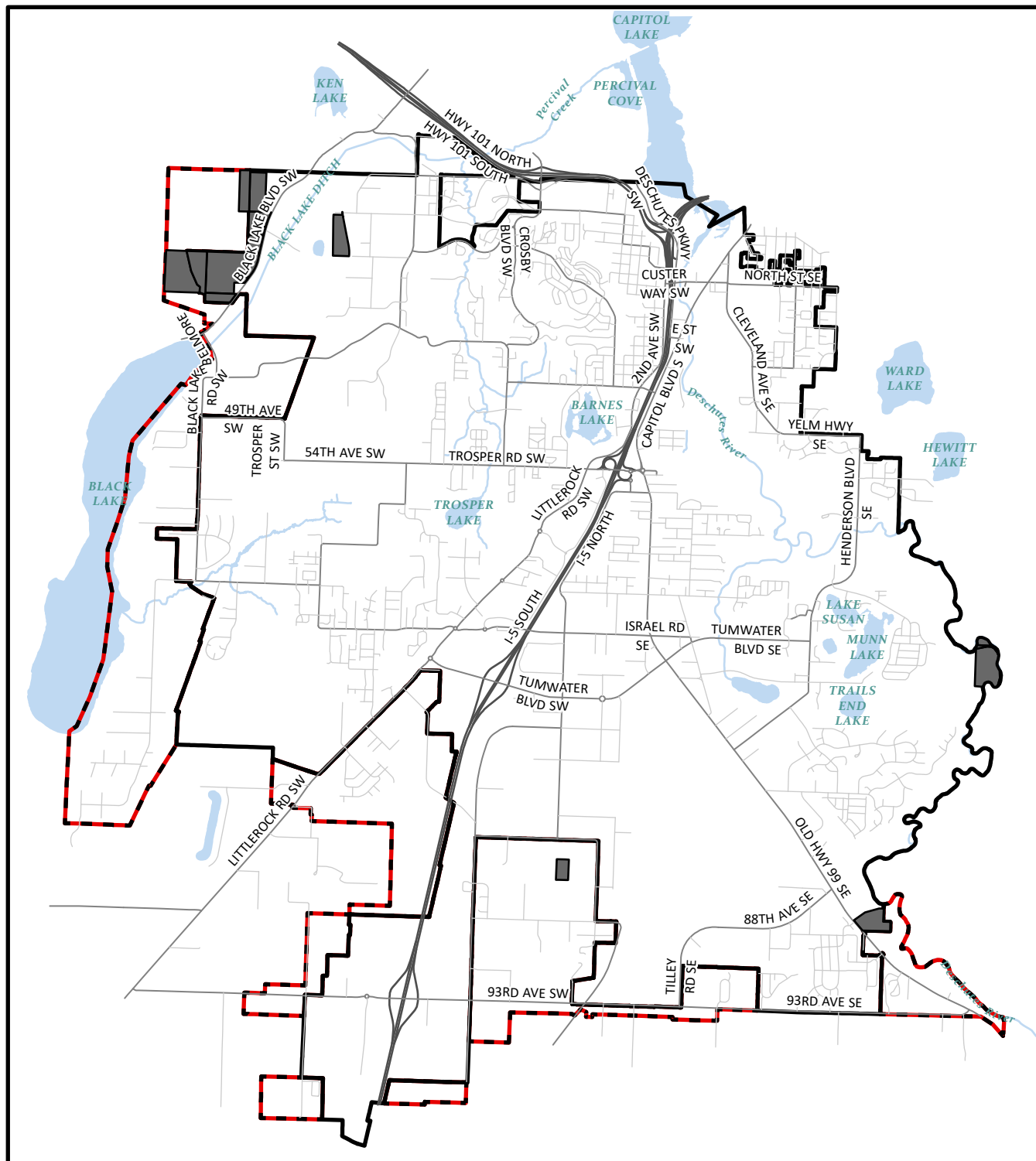
Designated Forest Resource Lands



-  Designated Forest Lands
-  Tumwater City Limits
-  Tumwater Urban Growth Area



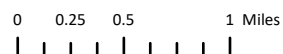
Map created by the City of Tumwater Transportation and Engineering Department using ArcGIS Pro 3.3.2.  
Data courtesy City of Tumwater Transportation and Engineering Department and Thurston County.  
DISCLAIMER: The City of Tumwater does not warrant, guarantee, or accept any liability for the accuracy, precision, or completeness of any information shown hereon or for any inferences made therefrom.



## Designated Mineral Resource Lands



- Mineral Resource Lands
- Tumwater City Limits
- Tumwater Urban Growth Area



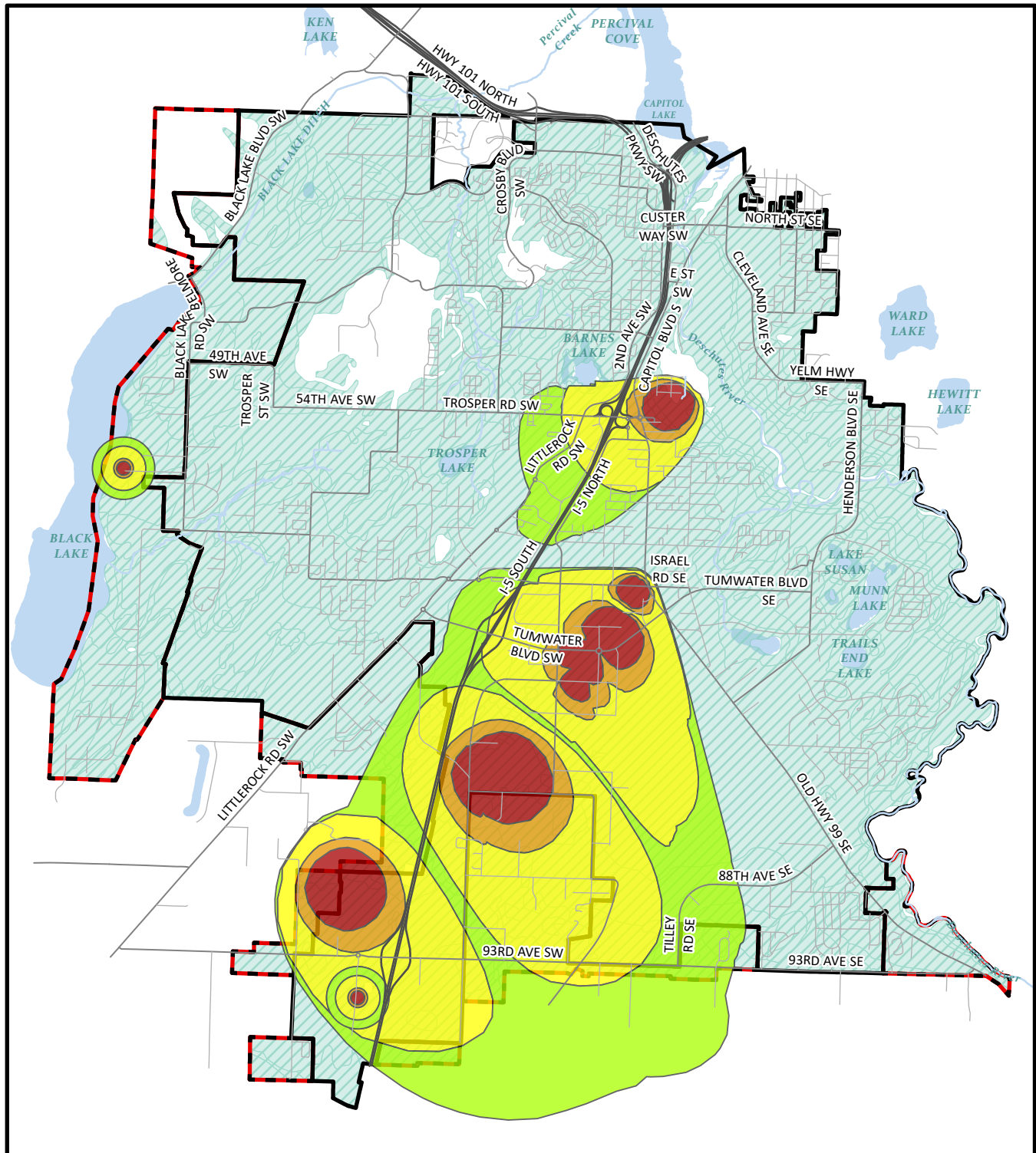
Map created by the City of Tumwater Transportation and Engineering Department using ArcGIS Pro 3.3.2.

Data courtesy City of Tumwater Transportation and Engineering Department and Thurston County.

Mineral resource lands were identified from County parcels with the property use code of "85".

DISCLAIMER: The City of Tumwater does not warrant, guarantee, or accept any liability for the accuracy, precision, or completeness of any information shown hereon or for any inferences made therefrom.





## Critical Aquifer Recharge Areas



### Wellhead Protection Area Capture Zones

- 6 month
- 1 year
- 5 year
- 10 year
- Critical Aquifer Recharge Areas
- Tumwater City Limits
- Tumwater Urban Growth Area

0 0.25 0.5 1 Miles

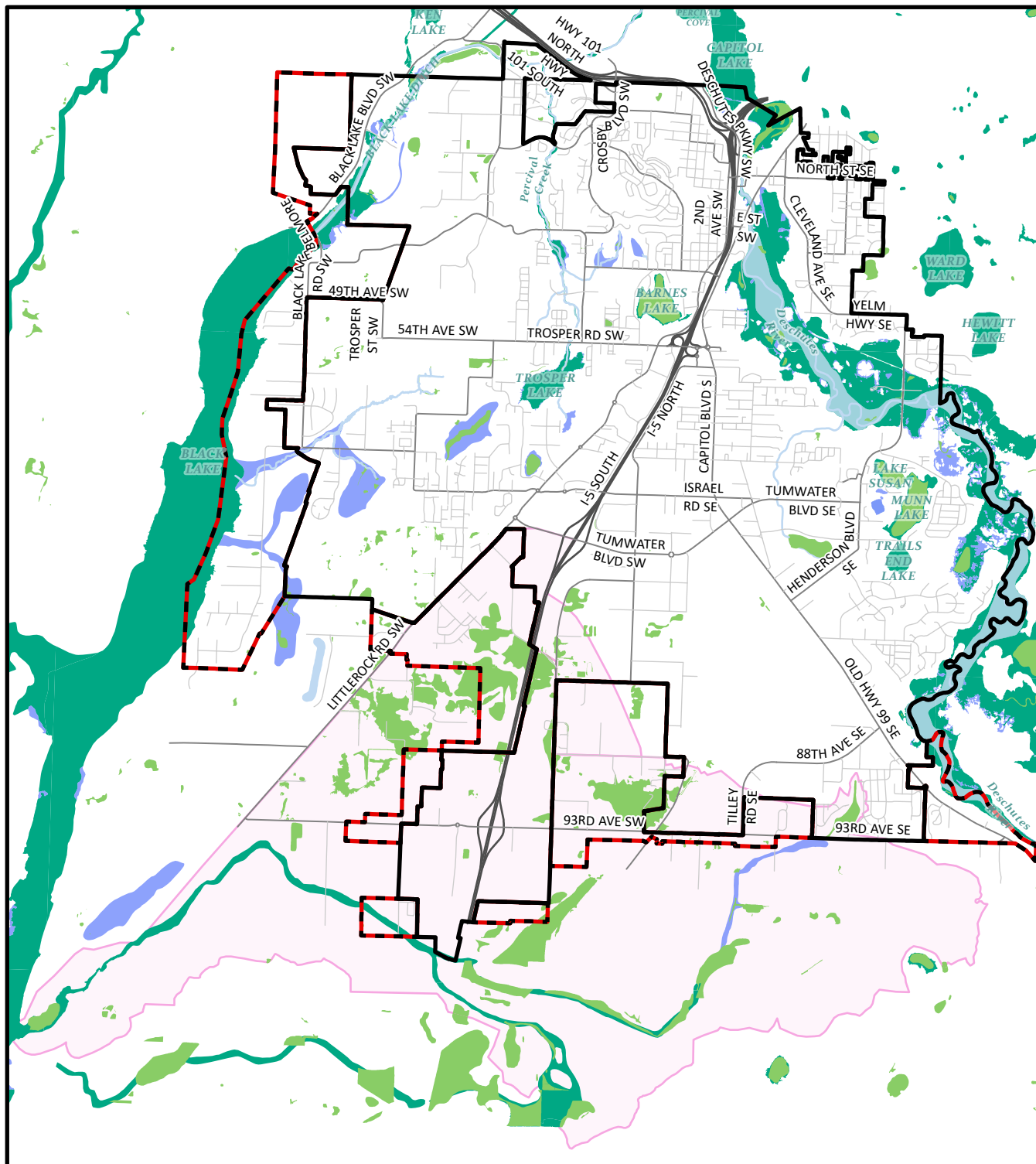


Map created by the City of Tumwater Transportation and Engineering Department using ArcGIS Pro 3.2.1.

Data courtesy City of Tumwater Transportation and Engineering Department, Golder Associates Inc., and Thurston County.

Wellhead Protection Area capture zones were delineated for each of the City's four wellfields using a groundwater flow model to simulate capture zones by Golder Associates Inc. in 2014. These zones are effective as of September 22, 2018 and were adopted under ordinance O2018-010.

DISCLAIMER: The City of Tumwater does not warrant, guarantee, or accept any liability for the accuracy, precision, or completeness of any information shown hereon or for any inferences made therefrom.



## Frequently Flooded Areas

- |   |  |
|---|--|
|  100 Year Flood Zone           |  Salmon Creek Basin         |
|  High Groundwater Hazard Areas |  Tumwater City Limits       |
|  Floodway                      |  Tumwater Urban Growth Area |
|  FEMA Flood Zone               |  |

0 0.25 0.5 1 Miles

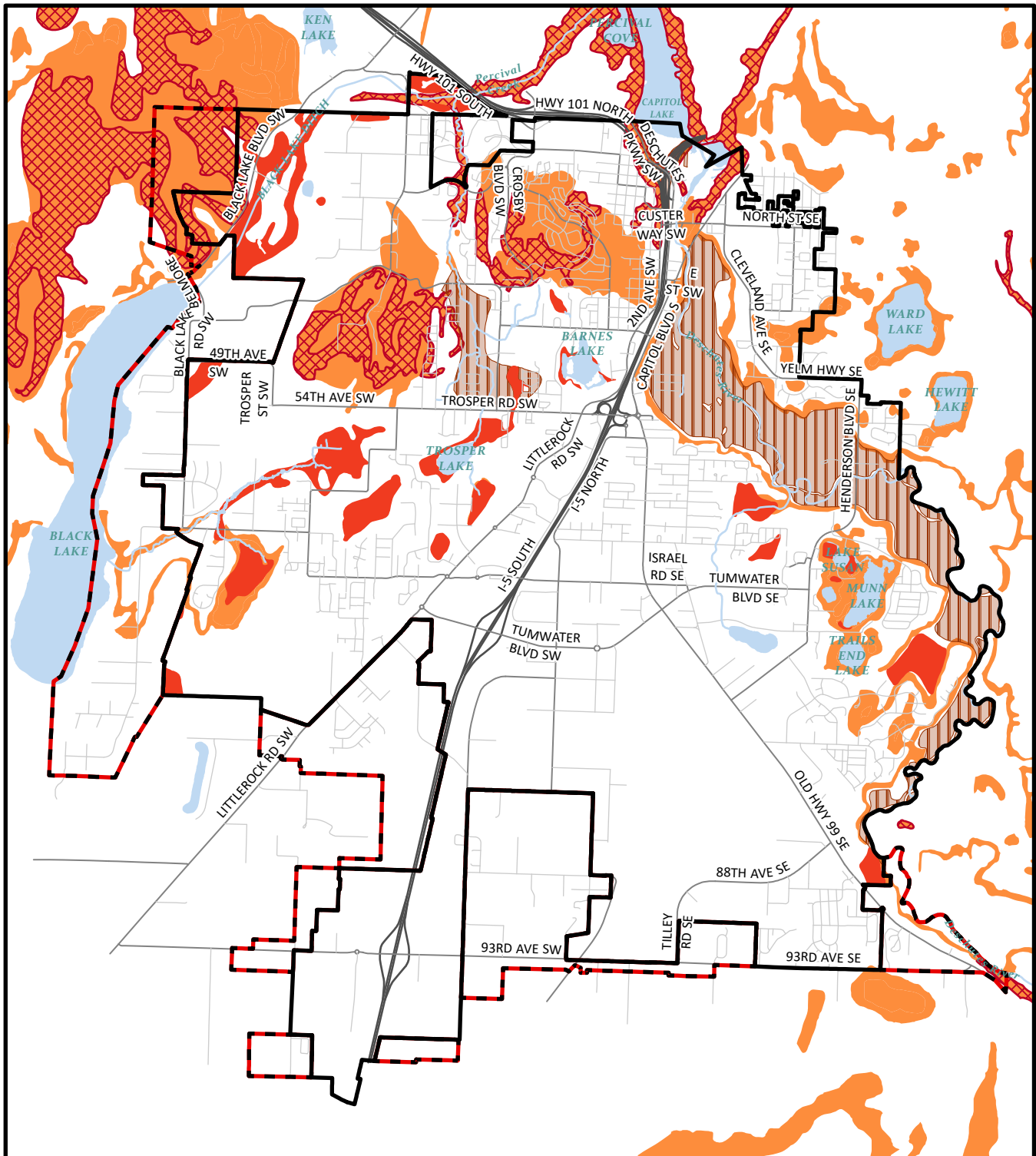


Map created by the City of Tumwater Transportation and Engineering Department using ArcGIS Pro 3.2.1.

Data courtesy City of Tumwater Transportation and Engineering Department, FEMA, and Thurston County.

FIRM Panel numbers: 53067C0164F, 53067C0168H, 53067C0169H, 53067C0301G, 53067C0282G, 53067C0281F, 53067C0280E, 53067C0283F, 53067C0284G, 53067C0303G Effective May 8, 2024

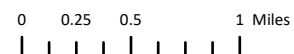
DISCLAIMER: The City of Tumwater does not warrant, guarantee, or accept any liability for the accuracy, precision, or completeness of any information shown hereon or for any inferences made therefrom.



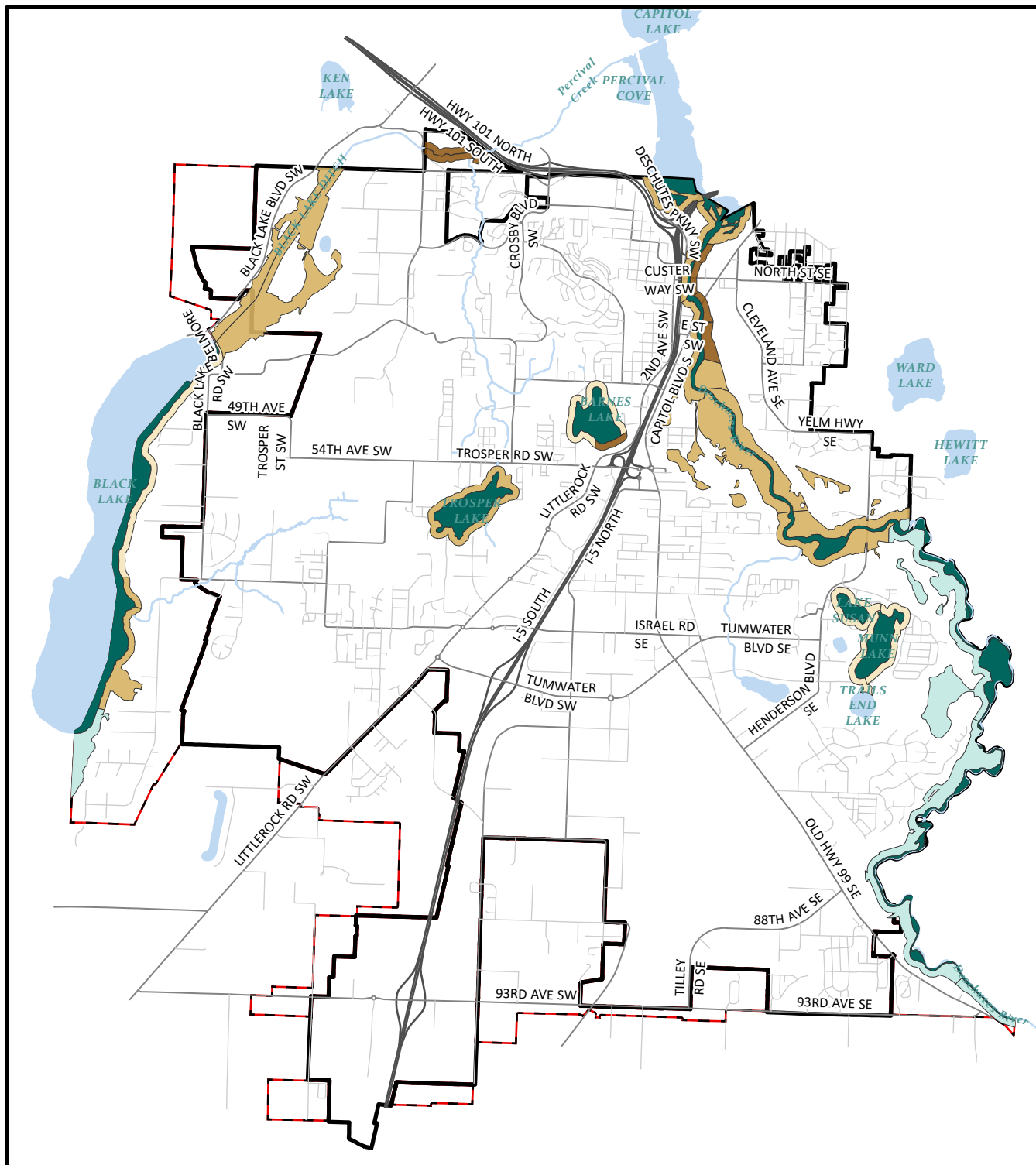
### Geologically Hazardous Areas



- Peat
- High Liquefaction
- Landslide Hazard Areas
- Steep Slopes
- Tumwater City Limits
- Tumwater Urban Growth Area



Map created by the City of Tumwater Transportation and Engineering Department using ArcGIS Pro 3.2.1.  
 Data courtesy City of Tumwater Transportation and Engineering Department, Thurston County, and WA State Department of Natural Resources.  
 DISCLAIMER: The City of Tumwater does not warrant, guarantee, or accept any liability for the accuracy, precision, or completeness of any information shown hereon or for any inferences made therefrom.



## Shorelines of the State



### Tumwater Shoreline Designations

- Aquatic
- Natural
- Shoreline Residential
- Urban Conservancy
- Urban Intensity
- Tumwater City Limits
- Tumwater Urban Growth Area

0 0.25 0.5 1 Miles



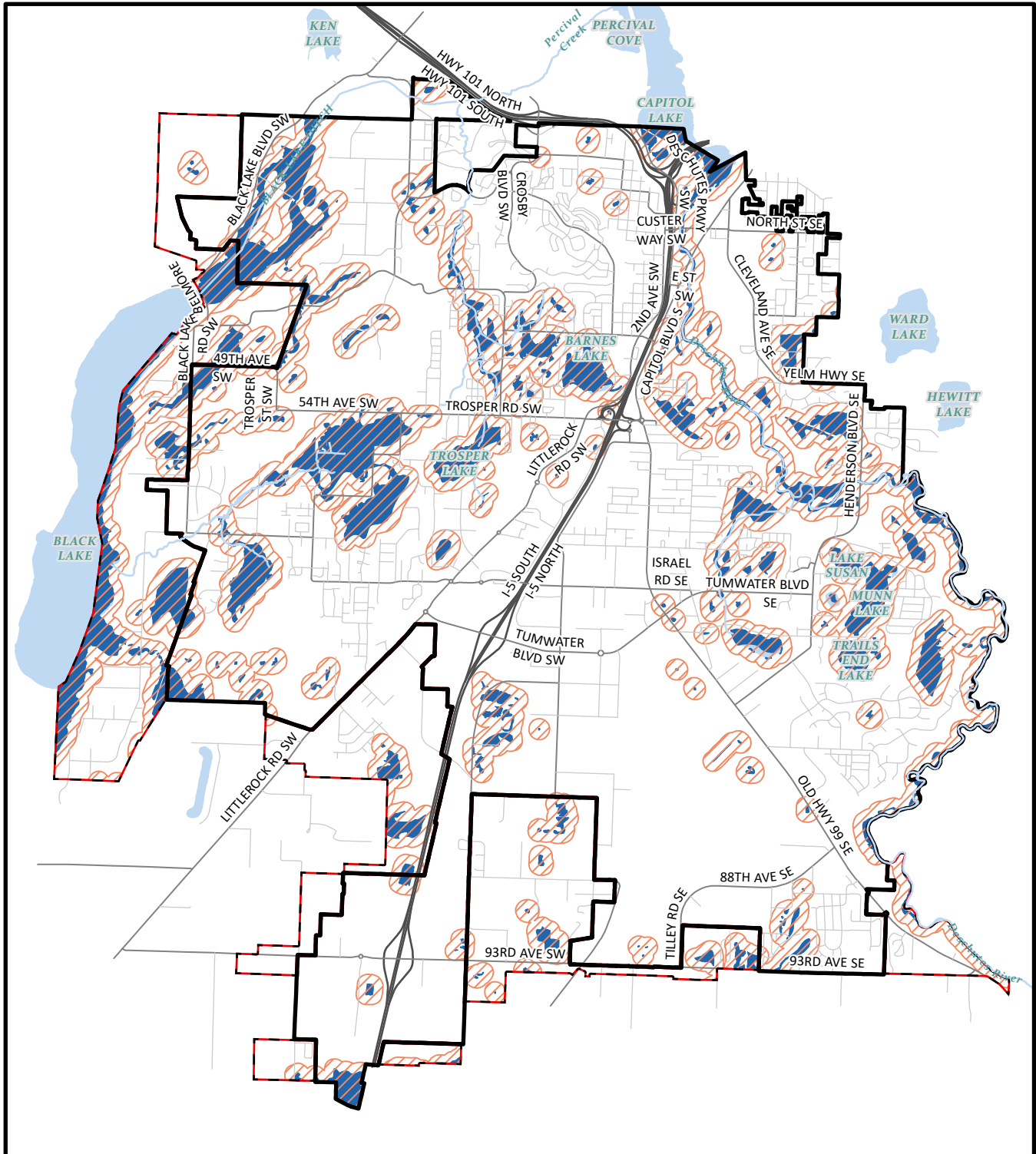
Map created by the City of Tumwater Transportation and Engineering Department using ArcGIS Pro 3.2.1.

Data courtesy City of Tumwater Transportation and Engineering Department.

Shoreline designations are sourced from the Tumwater Shoreline Master Program, last amended in 2019.

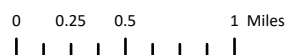
DISCLAIMER: The City of Tumwater does not warrant, guarantee, or accept any liability for the accuracy, precision, or completeness of any information shown hereon or for any inferences made therefrom.





## Wetlands

- Wetlands
- Wetland Review Areas
- Tumwater City Limits
- Tumwater Urban Growth Area



Map created by the City of Tumwater Transportation and Engineering Department using ArcGIS Pro 3.2.1.

Data courtesy City of Tumwater Transportation and Engineering Department and Thurston County.

Wetlands are a composite of new wetland standards and old wetland (pre-2017) delineations identified by the Thurston Regional Planning Council (TRPC) staff and the National Wetlands Inventory data. Edits to the data are made using verified wetland reports that have been submitted to and accepted by the Thurston County Community Planning and Economic Development Department. Last updated July 2, 2024.

Wetland Review Areas contains areas 300 feet around mapped wetland areas identified by TRPC, the National Wetlands Inventory, and wetland delineations from approved Thurston County permit applications.

DISCLAIMER: The City of Tumwater does not warrant, guarantee, or accept any liability for the accuracy, precision, or completeness of any information shown hereon or for any inferences made therefrom.