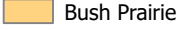
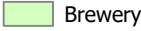
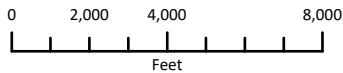


### Neighborhoods of Tumwater

Map created by the City of Tumwater Transportation and Engineering Department using ArcGIS Pro 3.3.2.  
DISCLAIMER: The City of Tumwater does not warrant, guarantee, or accept any liability for the accuracy, precision, or completeness of any information shown hereon or for any inferences made therefrom.



City Limits

UGA

Airport

Brewery

Bush Prairie

Deschutes

Littlerock

Mottman/Black Lake

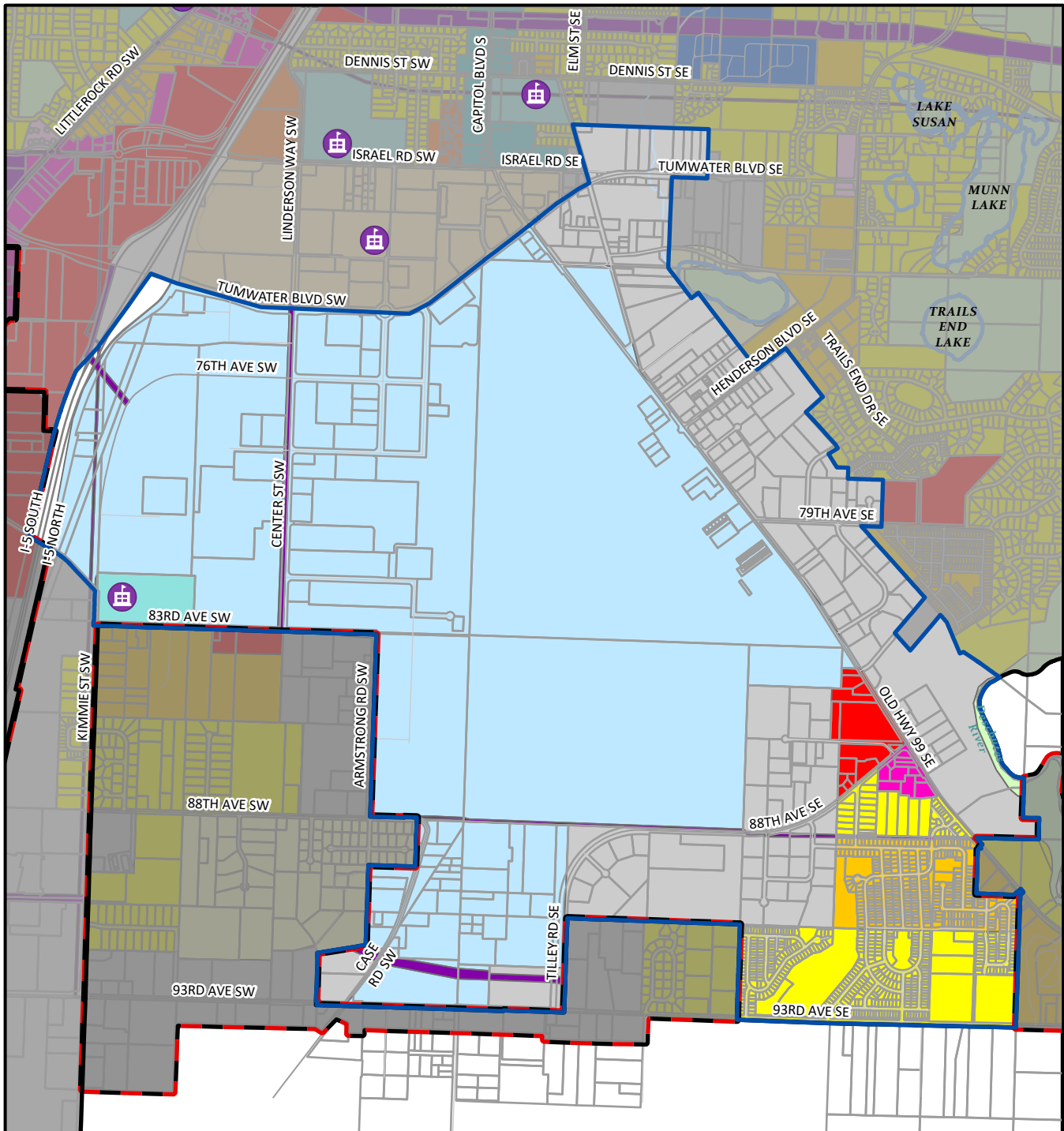
New Market

SE Capitol Boulevard

SW Tumwater

Trosper

Tumwater Hill



## Airport Neighborhood Future Land Use

Map created by the City of Tumwater Transportation and Engineering Department using ArcGIS Pro 3.3.2. **DISCLAIMER:** The City of Tumwater does not warrant, guarantee, or accept any liability for the accuracy, precision, or completeness of any information shown hereon or for any inferences made therefrom.

0 1,250 2,500 5,000  
Feet

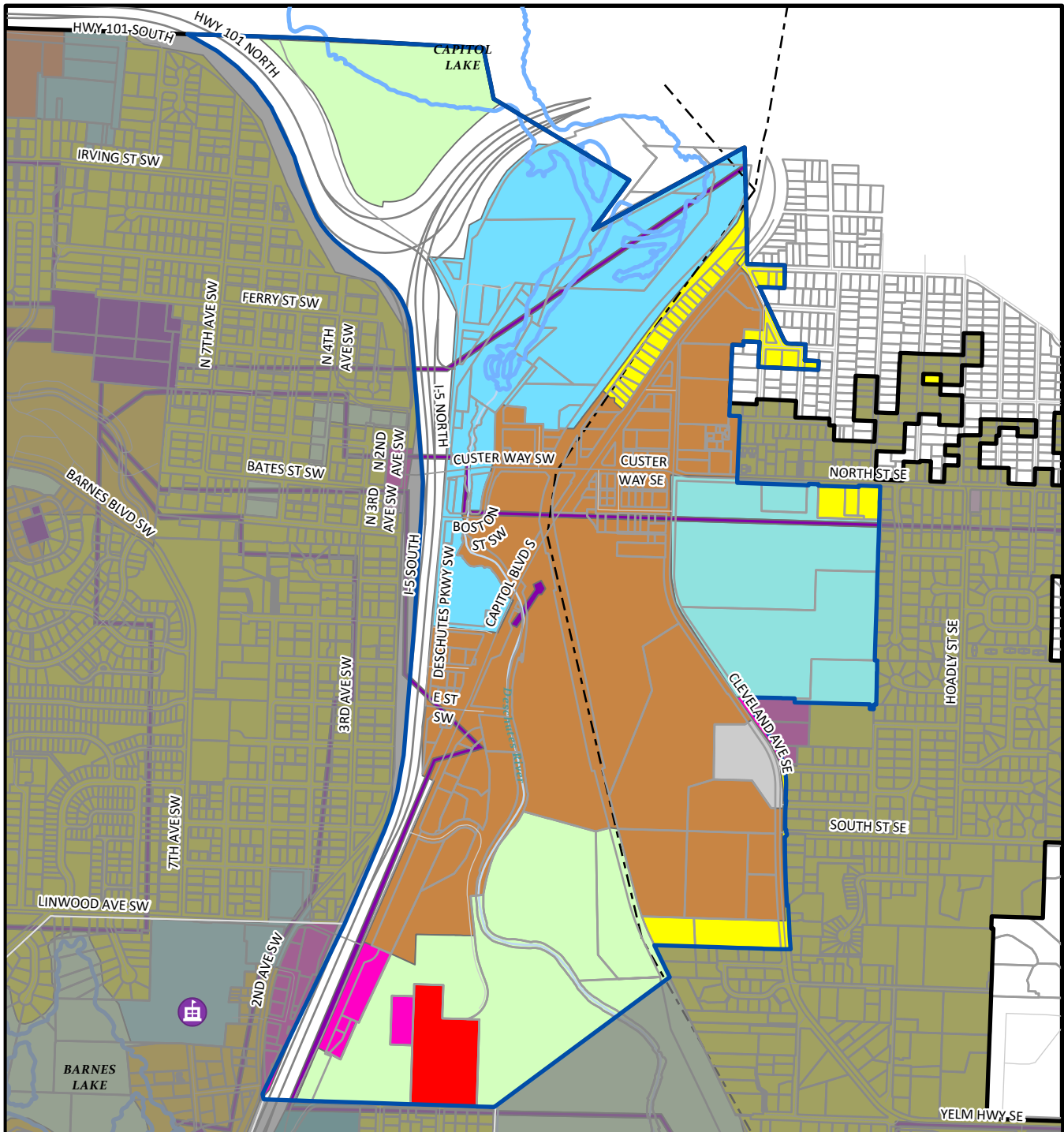


### Land Use Designations

- Airport Related Industrial
- Brewery District
- Capitol Boulevard Community
- General Commercial
- Green Belt
- Heavy Industrial
- High Density Residential
- Light Industrial
- Low Density Residential
- Manufactured Home Park

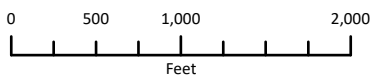
- Medium Density Residential
- Mixed Use
- Neighborhood Commercial
- New Market Historic District
- Parks and Open Space
- Public Institutional
- Residential/Sensitive Resource
- Tumwater Town Center
- Utilities
- City Limits
- UGA

- Airport Neighborhood
- Bodies of Water
- Freeways and Highways
- Arterial and Collector
- Residential
- Tumwater Parcels
- Water Courses
- School



## Brewery Neighborhood Future Land Use

Map created by the City of Tumwater Transportation and Engineering Department using ArcGIS Pro 3.3.2. **DISCLAIMER:** The City of Tumwater does not warrant, guarantee, or accept any liability for the accuracy, precision, or completeness of any information shown hereon or for any inferences made therefrom.

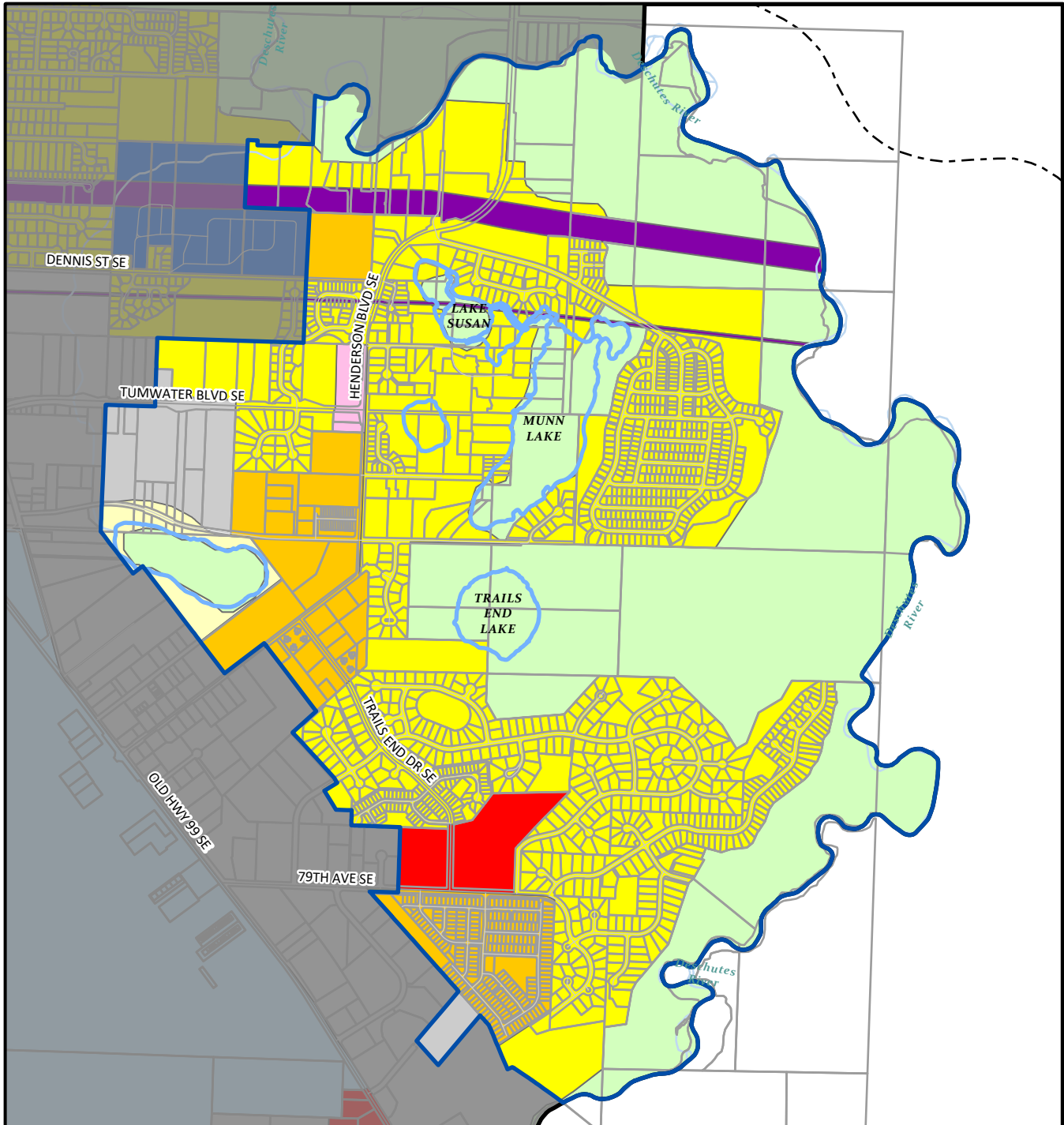


### Land Use Designations

- Airport Related Industrial
- Brewery District
- Capitol Boulevard Community
- General Commercial
- Green Belt
- Heavy Industrial
- High Density Residential
- Light Industrial
- Low Density Residential
- Manufactured Home Park
- Medium Density Residential
- Mixed Use
- Neighborhood Commercial
- New Market Historic District
- Parks and Open Space
- Public Institutional
- Residential/Sensitive Resource
- Tumwater Town Center
- Utilities
- City Limits
- UGA

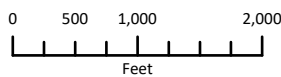
- Medium Density Residential
- Mixed Use
- Neighborhood Commercial
- New Market Historic District
- Parks and Open Space
- Public Institutional
- Residential/Sensitive Resource
- Tumwater Town Center
- Utilities
- City Limits
- UGA

- Brewery Neighborhood
- Bodies of Water
- Freeways and Highways
- Arterial and Collector
- Residential
- Tumwater Parcels
- Railroads
- Water Courses
- School



## Bush Prairie Neighborhood Future Land Use

Map created by the City of Tumwater Transportation and Engineering Department using ArcGIS Pro 3.3.2. **DISCLAIMER:** The City of Tumwater does not warrant, guarantee, or accept any liability for the accuracy, precision, or completeness of any information shown hereon or for any inferences made therefrom.



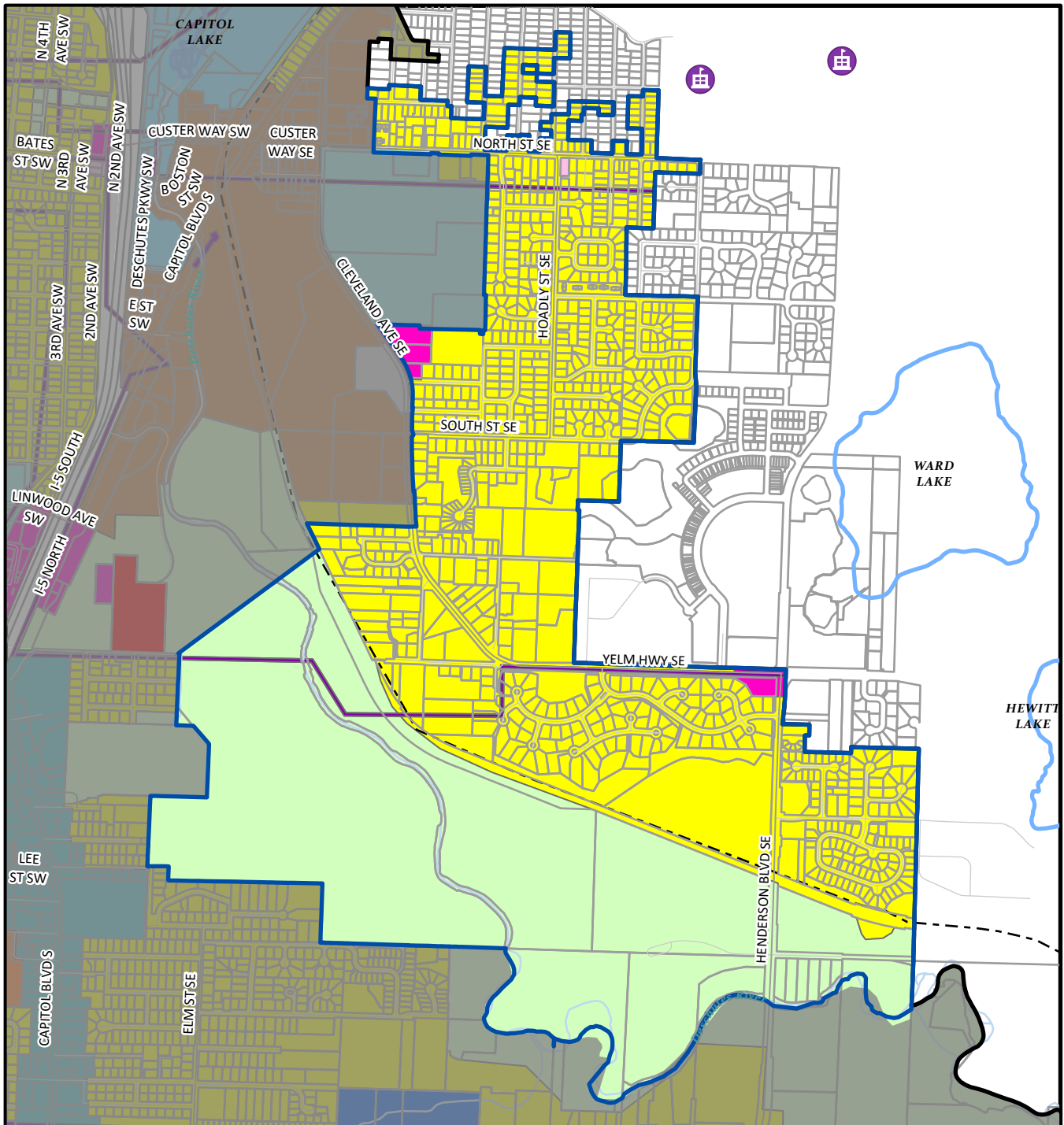
### Land Use Designations

- Airport Related Industrial
- Brewery District
- Capitol Boulevard Community
- General Commercial
- Green Belt
- Heavy Industrial
- High Density Residential
- Light Industrial
- Low Density Residential
- Manufactured Home Park
- Mixed Use
- Neighborhood Commercial
- New Market Historic District
- Parks and Open Space
- Public Institutional
- Residential/Sensitive Resource
- Tumwater Town Center
- Utilities
- City Limits
- UGA

- Medium Density Residential
- Mixed Use
- Neighborhood Commercial
- New Market Historic District
- Parks and Open Space
- Public Institutional
- Residential/Sensitive Resource
- Tumwater Town Center
- Utilities
- City Limits
- UGA

- Bush Prairie Neighborhood
- Bodies of Water
- Arterial and Collector
- Residential
- Tumwater Parcels
- Railroads
- Water Courses





## Deschutes Neighborhood Future Land Use

Map created by the City of Tumwater Transportation and Engineering Department using ArcGIS Pro 3.3.2.  
**DISCLAIMER:** The City of Tumwater does not warrant, guarantee, or accept any liability for the accuracy, precision, or completeness of any information shown hereon or for any inferences made therefrom.

0 500 1,000 2,000  
 Feet

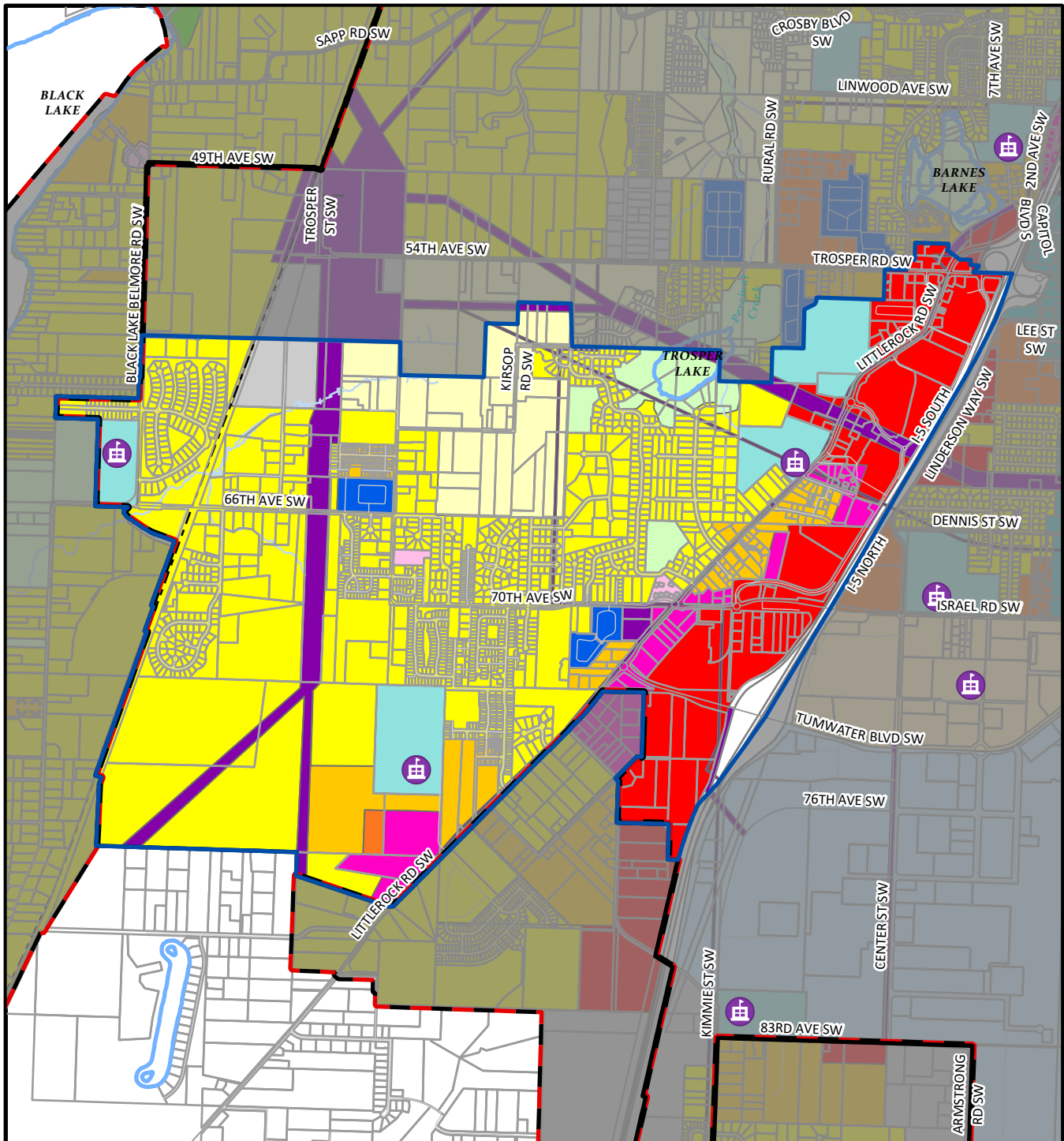


### Land Use Designations

- Airport Related Industrial
- Brewery District
- Capitol Boulevard Community
- General Commercial
- Green Belt
- Heavy Industrial
- High Density Residential
- Light Industrial
- Low Density Residential
- Manufactured Home Park
- Medium Density Residential
- Mixed Use
- Neighborhood Commercial
- New Market Historic District
- Parks and Open Space
- Public Institutional
- Residential/Sensitive Resource
- Tumwater Town Center
- Utilities
- City Limits
- UGA

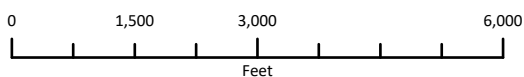
- Medium Density Residential
- Mixed Use
- Neighborhood Commercial
- New Market Historic District
- Parks and Open Space
- Public Institutional
- Residential/Sensitive Resource
- Tumwater Town Center
- Utilities
- City Limits
- UGA

- Deschutes Neighborhood
- Bodies of Water
- Freeways and Highways
- Arterial and Collector
- Residential
- Tumwater Parcels
- Railroads
- Water Courses
- School



## Littlerock Neighborhood Future Land Use

Map created by the City of Tumwater Transportation and Engineering Department using ArcGIS Pro 3.3.2. **DISCLAIMER:** The City of Tumwater does not warrant, guarantee, or accept any liability for the accuracy, precision, or completeness of any information shown hereon or for any inferences made therefrom.

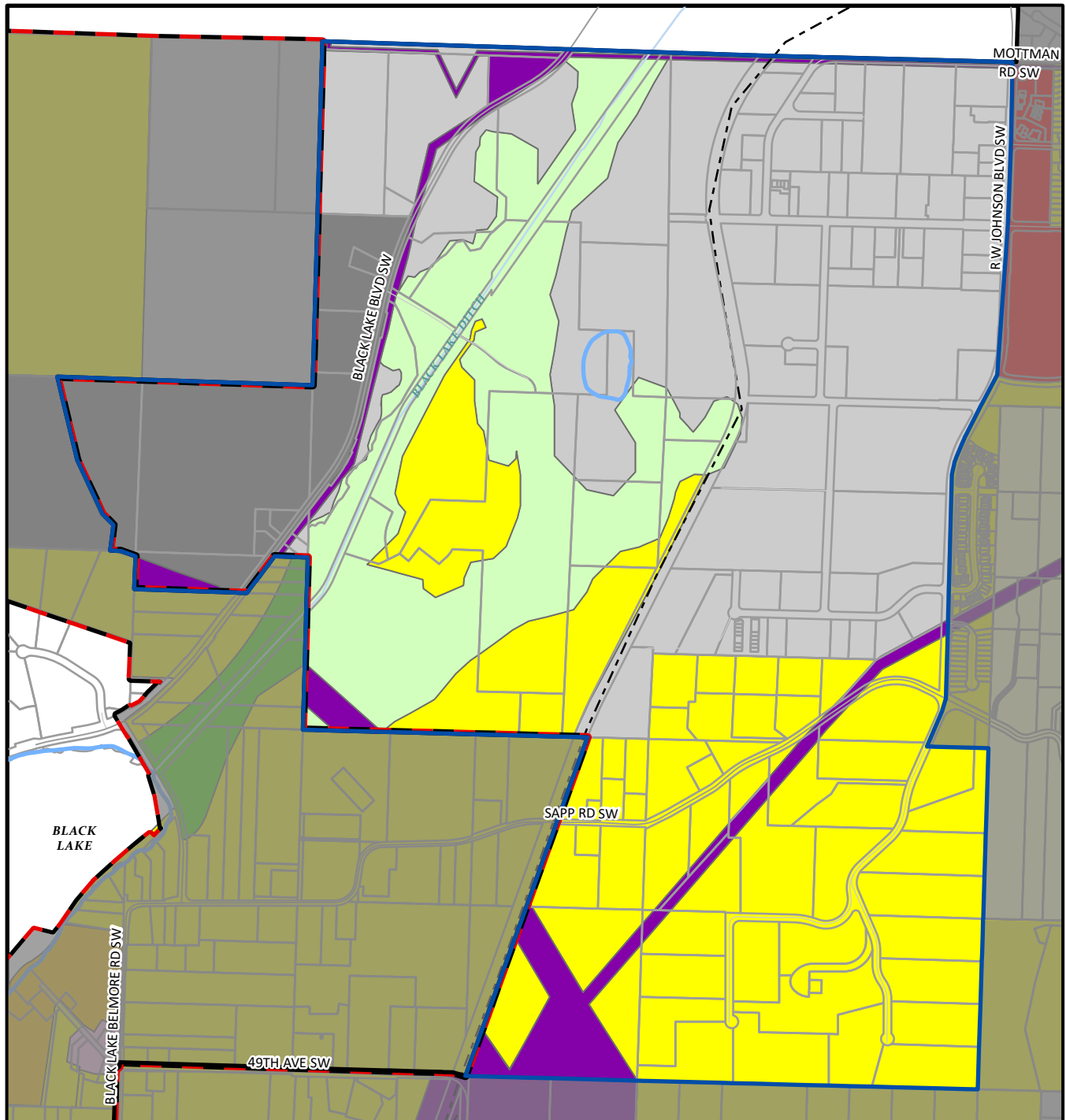


### Land Use Designations

- Airport Related Industrial
- Brewery District
- Capitol Boulevard Community
- General Commercial
- Green Belt
- Heavy Industrial
- High Density Residential
- Light Industrial
- Low Density Residential
- Manufactured Home Park
- Mixed Use
- Neighborhood Commercial
- New Market Historic District
- Parks and Open Space
- Public Institutional
- Residential/Sensitive Resource
- Tumwater Town Center
- Utilities
- City Limits
- UGA

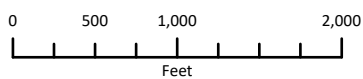
- Medium Density Residential
- Mixed Use
- Neighborhood Commercial
- New Market Historic District
- Parks and Open Space
- Public Institutional
- Residential/Sensitive Resource
- Tumwater Town Center
- Utilities
- City Limits
- UGA

- Littlerock Neighborhood
- Bodies of Water
- Freeways and Highways
- Arterial and Collector
- Residential
- Tumwater Parcels
- Railroads
- Water Courses
- School



## Mottman/Black Lake Neighborhood Future Land Use

Map created by the City of Tumwater Transportation and Engineering Department using ArcGIS Pro 3.3.2.  
 DISCLAIMER: The City of Tumwater does not warrant, guarantee, or accept any liability for the accuracy, precision, or completeness of any information shown hereon or for any inferences made therefrom.

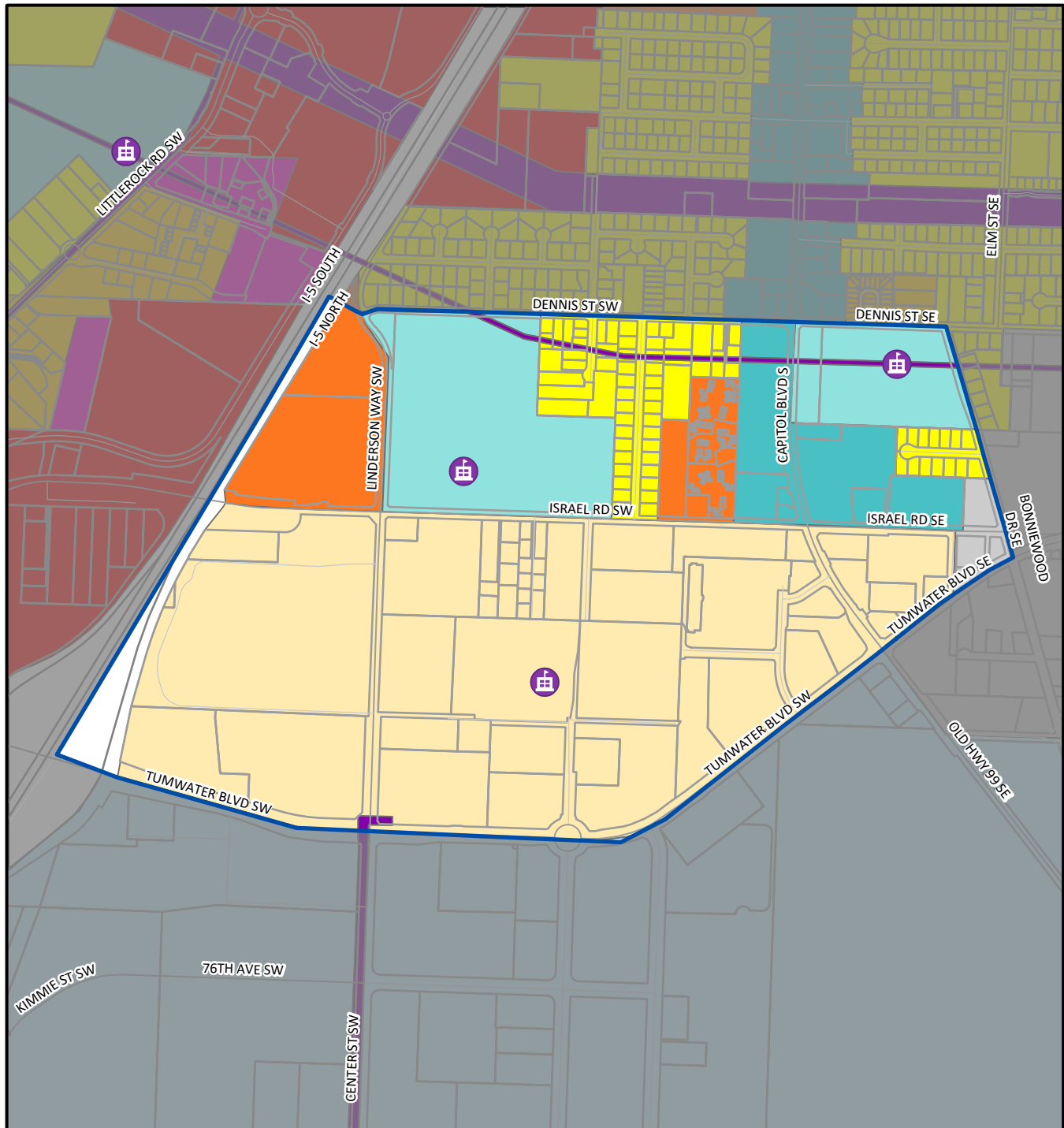


### Land Use Designations

- Airport Related Industrial
- Brewery District
- Capitol Boulevard Community
- General Commercial
- Green Belt
- Heavy Industrial
- High Density Residential
- Light Industrial
- Low Density Residential
- Manufactured Home Park

- Medium Density Residential
- Mixed Use
- Neighborhood Commercial
- New Market Historic District
- Parks and Open Space
- Public Institutional
- Residential/Sensitive Resource
- Tumwater Town Center
- Utilities
- City Limits
- UGA

- Mottman/Black Lake Neighborhood
- Bodies of Water
- Arterial and Collector
- Residential
- Tumwater Parcels
- - Railroads
- Water Courses



## New Market Neighborhood Future Land Use

Map created by the City of Tumwater Transportation and Engineering Department using ArcGIS Pro 3.3.2. **DISCLAIMER:** The City of Tumwater does not warrant, guarantee, or accept any liability for the accuracy, precision, or completeness of any information shown hereon or for any inferences made therefrom.

0 500 1,000 2,000  
Feet

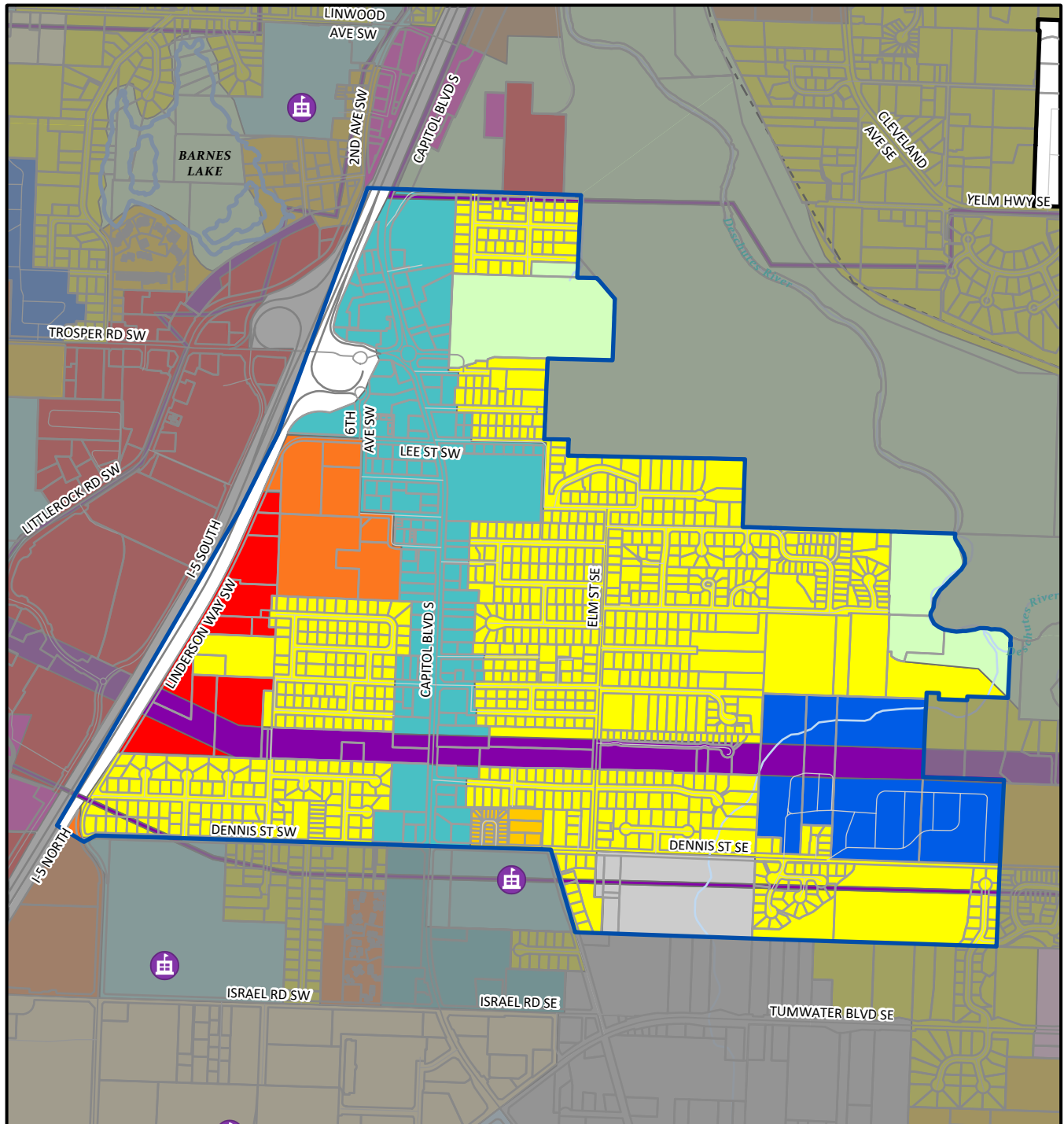


### Land Use Designations

Airport Related Industrial	Medium Density Residential
Brewery District	Mixed Use
Capitol Boulevard Community	Neighborhood Commercial
General Commercial	New Market Historic District
Green Belt	Parks and Open Space
Heavy Industrial	Public Institutional
High Density Residential	Residential/Sensitive Resource
Light Industrial	Tumwater Town Center
Low Density Residential	Utilities
Manufactured Home Park	City Limits
	UGA

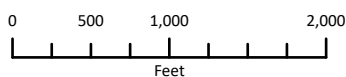
New Market Neighborhood
Freeways and Highways
Arterial and Collector
Residential
Tumwater Parcels
School





## SE Capitol Blvd Neighborhood Future Land Use

Map created by the City of Tumwater Transportation and Engineering Department using ArcGIS Pro 3.3.2.  
**DISCLAIMER:** The City of Tumwater does not warrant, guarantee, or accept any liability for the accuracy, precision, or completeness of any information shown hereon or for any inferences made therefrom.

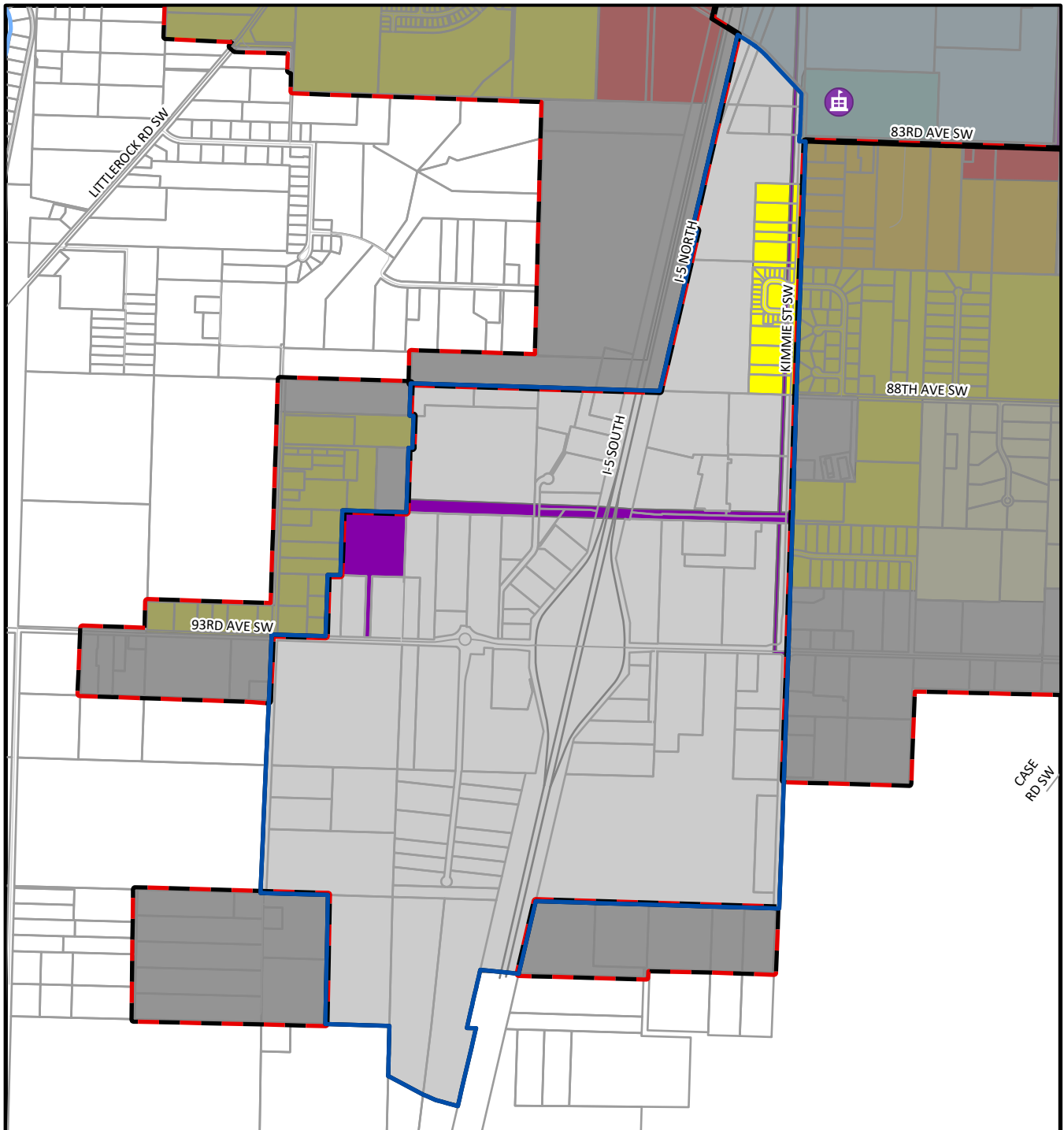


### Land Use Designations

- Airport Related Industrial
- Brewery District
- Capitol Boulevard Community
- General Commercial
- Green Belt
- Heavy Industrial
- High Density Residential
- Light Industrial
- Low Density Residential
- Manufactured Home Park

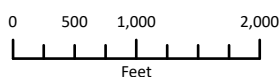
- Medium Density Residential
- Mixed Use
- Neighborhood Commercial
- New Market Historic District
- Parks and Open Space
- Public Institutional
- Residential/Sensitive Resource
- Tumwater Town Center
- Utilities
- City Limits
- UGA

- SE Capitol Blvd Neighborhood
- Bodies of Water
- Freeways and Highways
- Arterial and Collector
- Residential
- Tumwater Parcels
- Railroads
- Water Courses
- School



## SW Tumwater Neighborhood Future Land Use

Map created by the City of Tumwater Transportation and Engineering Department using ArcGIS Pro 3.3.2.  
**DISCLAIMER:** The City of Tumwater does not warrant, guarantee, or accept any liability for the accuracy, precision, or completeness of any information shown hereon or for any inferences made therefrom.

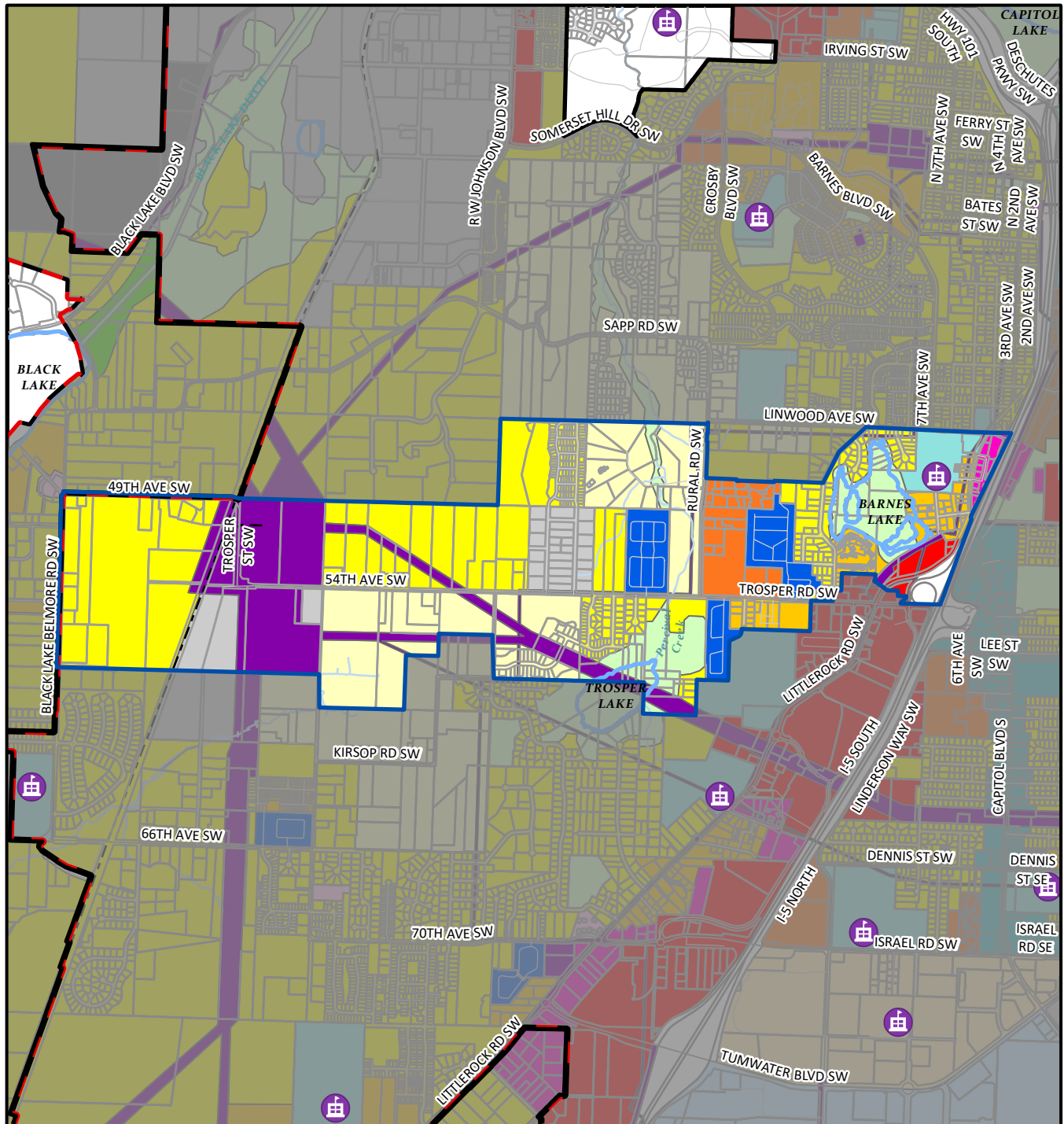


### Land Use Designations

- Airport Related Industrial
- Brewery District
- Capitol Boulevard Community
- General Commercial
- Green Belt
- Heavy Industrial
- High Density Residential
- Light Industrial
- Low Density Residential
- Manufactured Home Park

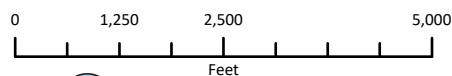
- Medium Density Residential
- Mixed Use
- Neighborhood Commercial
- New Market Historic District
- Parks and Open Space
- Public Institutional
- Residential/Sensitive Resource
- Tumwater Town Center
- Utilities
- City Limits
- UGA

- SW Tumwater Neighborhood
- Bodies of Water
- Freeways and Highways
- Arterial and Collector
- Residential
- Tumwater Parcels
- School



## Trosper Neighborhood Future Land Use

Map created by the City of Tumwater Transportation and Engineering Department using ArcGIS Pro 3.3.2.  
 DISCLAIMER: The City of Tumwater does not warrant, guarantee, or accept any liability for the accuracy, precision, or completeness of any information shown hereon or for any inferences made therefrom.



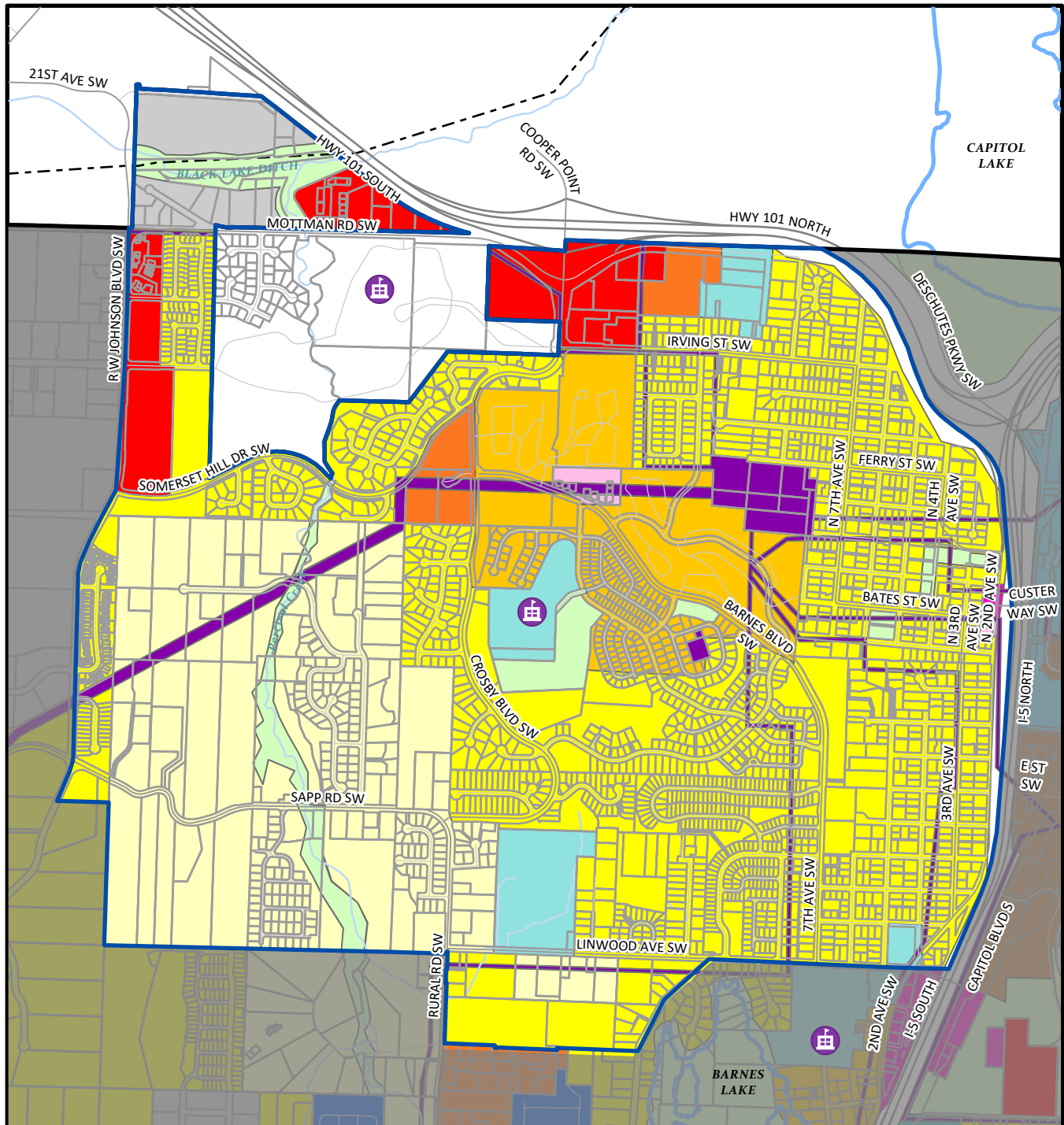
### Land Use Designations

- Airport Related Industrial
- Brewery District
- Capitol Boulevard Community
- General Commercial
- Green Belt
- Heavy Industrial
- Light Industrial
- Low Density Residential
- Manufactured Home Park
- High Density Residential
- Mixed Use
- Neighborhood Commercial
- Parks and Open Space
- Public Institutional
- Residential/Sensitive Resource
- Tumwater Town Center
- Utilities
- City Limits
- UGA

- Medium Density Residential
- Mixed Use
- Neighborhood Commercial
- Parks and Open Space
- Public Institutional
- Residential/Sensitive Resource
- Tumwater Town Center
- Utilities
- City Limits
- UGA

- Trosper Neighborhood
- Bodies of Water
- Freeways and Highways
- Arterial and Collector
- Residential
- Tumwater Parcels
- Railroads
- Water Courses
- School
- TrosperReal\_Erase





## Tumwater Hill Neighborhood Future Land Use

Map created by the City of Tumwater Transportation and Engineering Department using ArcGIS Pro 3.3.2.  
**DISCLAIMER:** The City of Tumwater does not warrant, guarantee, or accept any liability for the accuracy, precision, or completeness of any information shown hereon or for any inferences made therefrom.

0 500 1,000 2,000  
 Feet



### Land Use Designations

- Airport Related Industrial
- Brewery District
- Capitol Boulevard Community
- General Commercial
- Green Belt
- Heavy Industrial
- High Density Residential
- Light Industrial
- Low Density Residential
- Manufactured Home Park

- Medium Density Residential
- Mixed Use
- Neighborhood Commercial
- New Market Historic District
- Parks and Open Space
- Public Institutional
- Residential/Sensitive Resource
- Tumwater Town Center
- Utilities
- City Limits
- UGA

- Tumwater Hill Neighborhood
- Bodies of Water
- Freeways and Highways
- Arterial and Collector
- Residential
- Tumwater Parcels
- Railroads
- Water Courses
- School