

40 20 0 40 80
SCALE: 1" = 40'



INSTALLATION SPECIFICATIONS

1. SCARIFY OR OTHERWISE REMOVE ALL EXISTING VEGETATION FROM ALL PLANTING AREAS. FINE GRADE ALL LANDSCAPE BEDS PRIOR TO BARK OR GROUND COVER PLACEMENT.
2. NO PLANT SUBSTITUTIONS WILL BE ACCEPTED WITHOUT PRIOR APPROVAL FROM THE LANDSCAPE ARCHITECT AND THE CITY OF TUMWATER.
3. ALL PLANT MATERIAL AND PLANT LOCATIONS SHALL BE APPROVED, AT THE REQUEST OF THE LANDSCAPE ARCHITECT, PRIOR TO INSTALLATION. ALL PLANTS SHALL BE THOROUGHLY WATERED IMMEDIATELY AFTER PLANTING.
4. SOIL MIX FOR BED PREPARATION AND PLANTING BACKFILL SHALL BE A 3-PART LANDSCAPE BLEND CONSISTING OF THE FOLLOWING: 33% (MAX) IMPORTED BLACK SANDY LOAM TOPSOIL, 33% (MIN) PEATMOSS OR COMPOSTED FIR CHIPS OR BARK, AND 33% COMPOSTED STEER MANURE OR MUSHROOM COMPOST. OTHER SOIL MIX PRODUCTS MUST BE APPROVED BY THE LANDSCAPE ARCHITECT PRIOR TO USE.
5. SOIL PREPARATION: SPREAD TO A MINIMUM DEPTH OF 4 INCHES (12 CUBIC YARDS PER 1000 S.F.) OF SOIL MIX PER NOTE 4, IN ALL GROUND COVER AND PLANTING BEDS. ROTOTILL OR OTHERWISE THOROUGHLY INCORPORATE SOIL MIX TO A 5 TO 6 INCH DEPTH. GRADE SMOOTH, AND REMOVE ALL ROCKS AND CLODS OVER 1 INCH DIAMETER.
6. BACKFILL MIX FOR ALL TREES AND SHRUBS TO BE 1/3 EXISTING SITE TOPSOIL AND 2/3 SOIL MIX PER NOTE 4. REFER TO PLANS AND DETAILS REGARDING INSTALLATION OF PLANT MATERIALS.
7. FERTILIZER FOR ALL PLANTS SHALL BE AGRIFORM 20-10-5, 21 GRAM OR 10 GRAM TABLETS DISTRIBUTED AS FOLLOWS: TREES 4-21 GRAM TABLETS, SHRUBS 2 GAL. SIZE AND LARGER 3-21 GRAM TABLETS, 1 GAL. SIZE SHRUBS 1-21 GRAM TABLET, ALL 4" POTS 1 - 5 GRM TABLET OR EQUIVALENT EACH. SET TABLETS DIRECTLY NEXT TO ROOT BALL. GRANULAR EQUIVALENT FERTILIZER IS ACCEPTABLE WITH PRIOR AUTHORIZATION FROM THE LANDSCAPE ARCHITECTS.
8. ALL SHRUB AND GROUND COVER BEDS SHALL RECEIVE 2 INCH MINIMUM DEPTH (6 CUBIC YARDS PER 1000 S.F.) OF HEM-FIR MEDIUM BARK MULCH. PLANT 4" POT GROUND COVERS INTO SOIL MIX PER NOTE 5 ABOVE. PLANTS PLANTED IN BARK MULCH ONLY ARE NOT ACCEPTABLE.
9. APPLY A GRANULAR OR SOLUBLE PRE-EMERGENT HERBICIDE AS APPROVED BY THE LANDSCAPE ARCHITECT TO ALL SHRUB AND GROUND COVER BEDS PRIOR TO DISTRIBUTION OF BARK MULCH.
10. SOIL PREPARATION FOR TURF AREAS: SPREAD 4" DEPTH (12 CUBIC YARDS PER 1000 S.F.) SOIL MIX AS PER NOTE 4 AND ROTOTILL THE ABOVE TO A DEPTH OF 6 TO 8 INCHES. GRADE SMOOTH, REMOVE ALL ROCKS AND CLODS OVER 1 INCH DIAMETER, AND ROLL SMOOTH WITH WATER FILLED ROLLER.
11. TURF AREAS SHALL BE SEEDED, FERTILIZED AND MULCHED IN A HYDRAULIC APPLICATION BY CONVENTIONAL SEEDING EQUIPMENT. SEED SHALL BE A MINIMUM FOUR WAY MIXTURE OF PERENNIAL RYEGRASS VARIETIES AT A RATE NOT LESS THAN 2.5 LBS PER 1000 S.F. LANDSCAPE ARCHITECT SHALL APPROVE MULCH/FERTILIZER TYPE AND RATES PRIOR TO APPLICATION. WATER TURF AREAS WITHIN 1 HOUR OF APPLICATION.
12. ALL WORK SHALL BE PERFORMED TO THE SATISFACTION OF THE LANDSCAPE ARCHITECT AND OWNER. ALL PLANTS SHALL BE GUARANTEED FOR ONE FULL YEAR FROM DATE OF ACCEPTANCE. ALL REPLACEMENTS SHALL BE RE-GUARANTEED FOR ANOTHER FULL YEAR FROM DATE OF INSTALLATION.
13. THE OWNER SHALL MAINTAIN ALL LANDSCAPE AREAS AND PLANT MATERIALS IN ACCORDANCE TO LOCAL ORDINANCES.

NEWLY PLANTED TREES ON LOTS

PLANTING OF NEW TREES ON INDIVIDUAL LOTS SHALL BE REQUIRED AT A RATE OF ONE TREE FOR EVERY FOUR THOUSAND SQUARE FEET OF LOT AREA. THERE IS AN APPROXIMATELY 334,332 SQUARE FEET OF LOT AREA WHICH WILL REQUIRE 84 NEWLY PLANTED TREES ON THE INDIVIDUAL LOTS.

OPEN SPACE CALCULATIONS

USE OF TRACTS	
"A" - TREE TRACT.....	0.07 AC.
"B" - TREE TRACT.....	0.09 AC.
"C" - TREE TRACT.....	0.02 AC.
"D" - TREE TRACT.....	0.12 AC.
"E" - TREE TRACT.....	0.03 AC.
"F" - TREE TRACT.....	0.02 AC.
"G" - TREE TRACT.....	0.11 AC.
"H" - TREE TRACT.....	0.07 AC.
"I" - TREE TRACT.....	0.21 AC.
"J" - ACTIVE RECREATION.....	0.26 AC.
"L" - TREE TRACT.....	0.01 AC.

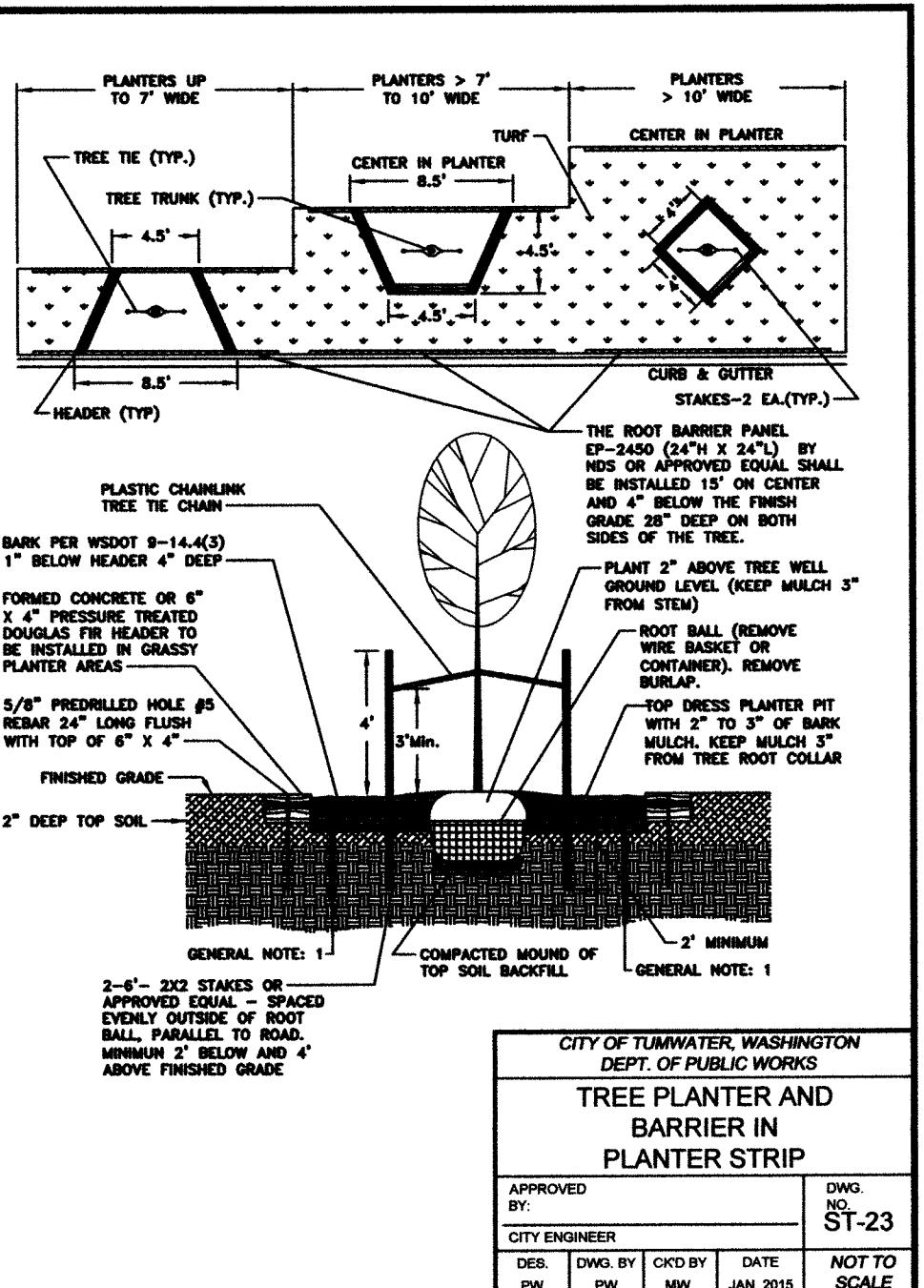
0.889 AC.
8.5% OF
GROSS
SITE AREA

APPROVED FOR CONSTRUCTION

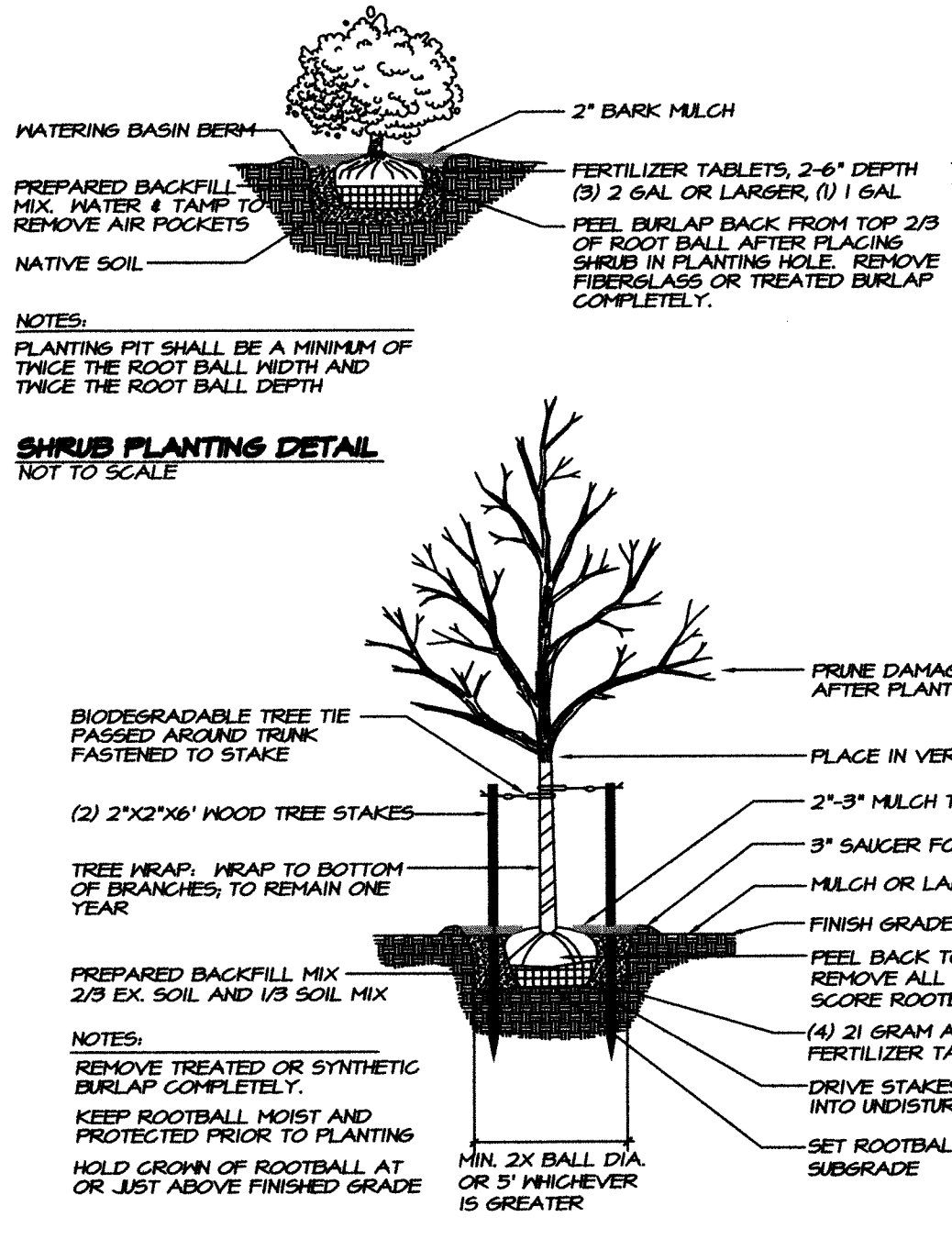
BY: TUMWATER COMMUNITY PLANNING & DEVELOPMENT
DATE: _____
APPROVAL EXPIRES: _____

PLANT SCHEDULE

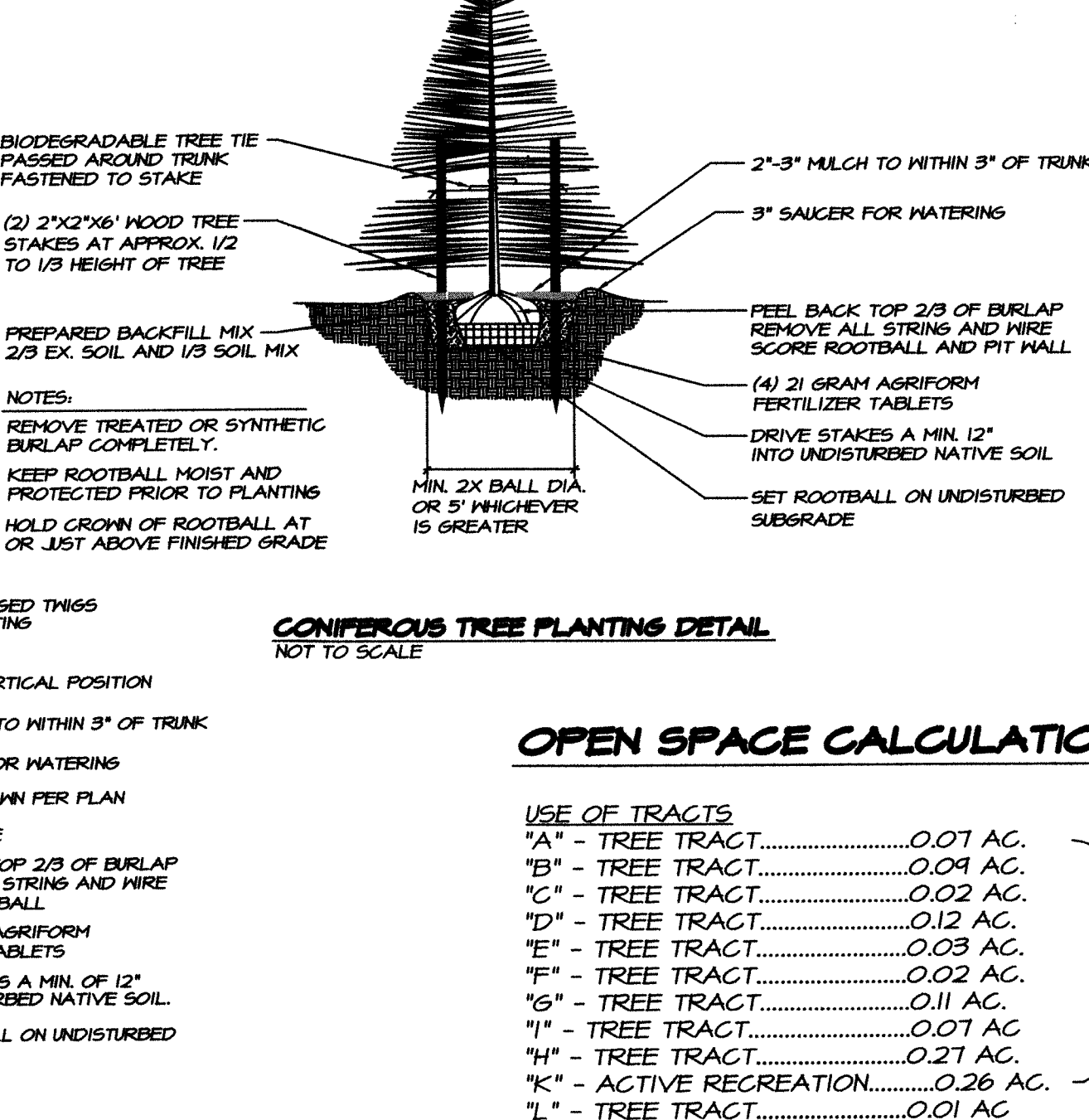
SYMBOL	QUANTITY	BOTANICAL NAME	COMMON NAME	SIZE	LOCATION/NOTES
	14	<i>Acer glabrum</i>	Vine Maple	2" CAL. MIN.	Open Space & Storm Pond
	12	<i>Fraxinus excels. 'Aureata'</i>	Golden Desert Ash	2" CAL. MIN.	Land & Patio Dr.
	25	<i>Cercidiphyllum japonicum</i>	Katsura Tree	2" CAL. MIN.	Open Space
	23	<i>Tilia cordata 'Holkia'</i>	Summer Sprite Linden	2" CAL. MIN.	Kirsop Rd & O.S.
	33	<i>Acer trunc. x platanoides 'Warrenred'</i>	Pacific Sunset Maple	2" CAL. MIN.	63rd Ave
	20	<i>Calocedrus decurrens</i>	Incense Cedar	6'-8" HT.	Open Space
	13	<i>Pinus nigra</i>	Austrian Pine	6'-8" HT.	Open Space
	20	<i>Photinia fraseri</i>	Fraser Photinia	5 GAL.	Open Space
	43	<i>Cornus stolonifera</i>	Red-Twig Dogwood	2 GAL.	Storm Pond
	17	<i>Physocarpus capitatus</i>	Pacific Ninebark	2 GAL.	Storm Pond
	42	<i>Spiraea douglasii</i>	Western Spirea	2 GAL.	Storm Pond
	1000 (equal mix 20 groups of 10 each)	Mud-Pond Mix <i>Scirpus acutus</i> <i>Scirpus microcarpus</i> <i>Sparganium emersoni</i> <i>Sparganium angustifolium</i> <i>Veronica sp.</i>	Hardstem Bulrush Small Fruited Bulrush Burhead Burhead Marsh Speedwell	PLUS 65" O.C.	Storm Pond



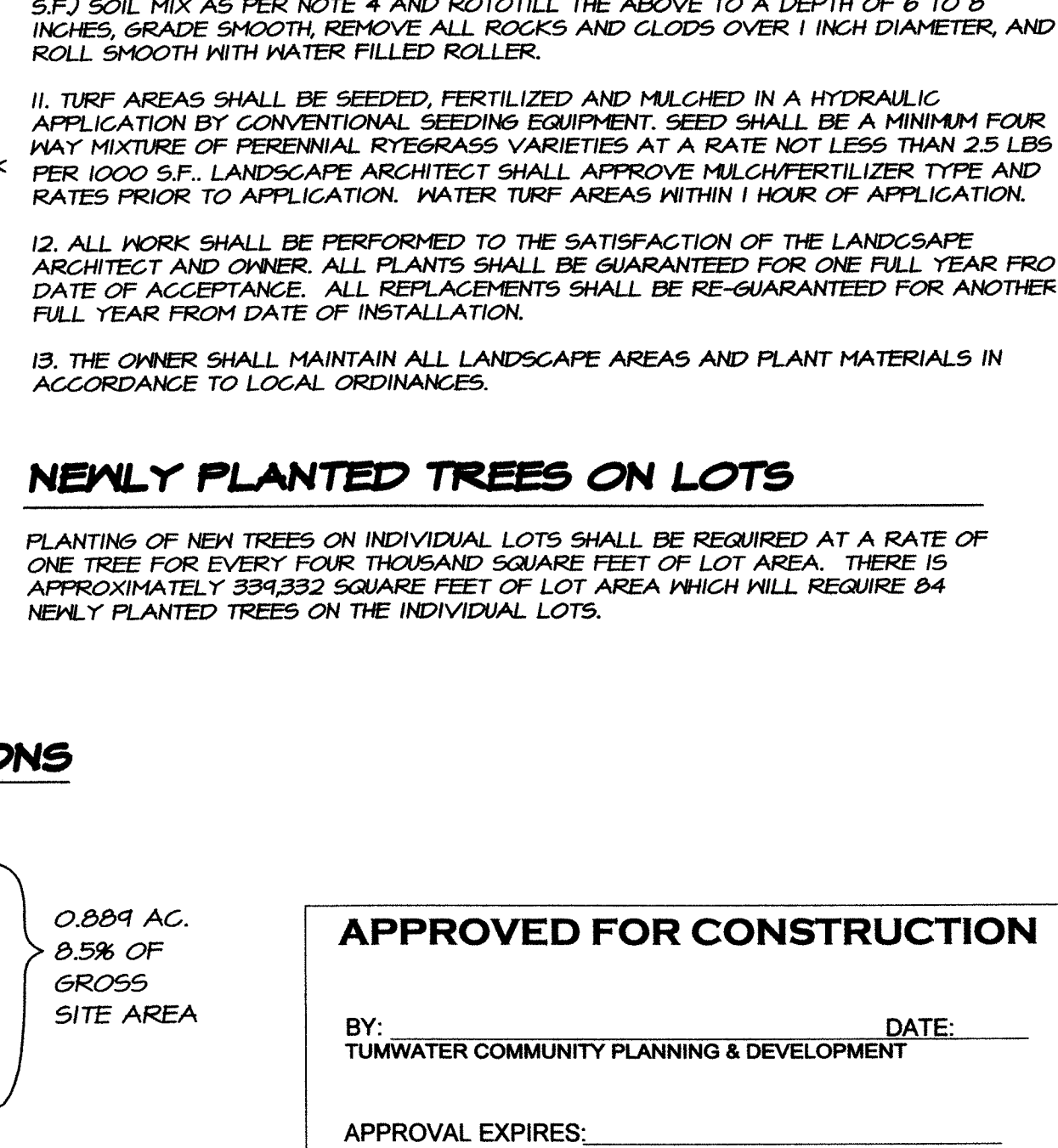
STREET TREE PLANTING DETAIL
NOT TO SCALE



SHRUB PLANTING DETAIL
NOT TO SCALE



DECIDUOUS TREE PLANTING DETAIL FOR OPEN SPACE
NOT TO SCALE



CONIFEROUS TREE PLANTING DETAIL
NOT TO SCALE

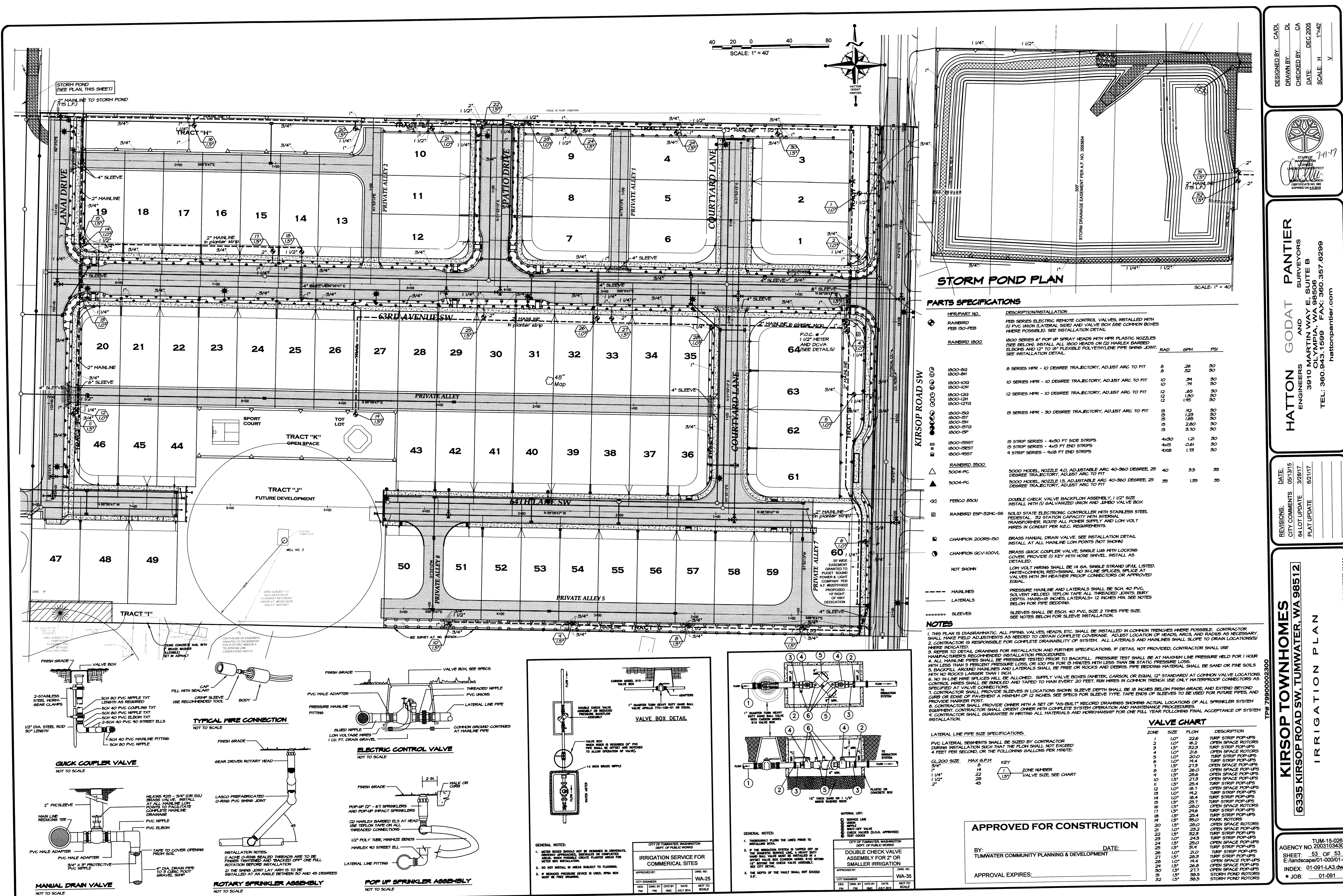
DESIGNED BY: CAVD
DRAWN BY: DL
CHECKED BY: CA
DATE: DEC 2005
SCALE: 1" = 40'

HATTON GODAT PANTIER AND ENGINEERS
3910 MARTIN WAY E. SUITE B
OLYMPIA, WA 98506
TEL: 360.943.1599 FAX: 360.357.6299
huttonpantier.com

REVISIONS: DATE: 05/31/15
CITY COMMENTS: 64 LOT UPDATE 3/21/17
PLAT UPDATE: 6/21/17

TUM-15-0281
AGENCY NO 2003103430
SHEET: 52 OF 53
E:\landscape\01-0001\01-091
INDEX: 01-091-LA3.dwg
JOB: 01-091

6335 KIRSOP ROAD SW, TUMWATER, WA 98512
LANDSCAPE PLAN
A PORTION OF THE SE 1/4 OF SECTION 5, TOWNSHIP 17 N, RANGE 2 WEST, W.M.



STORM POND PLAN

PARTS SPECIFICATIONS

ITEM NO.	DESCRIPTION	QTY	UNIT
1	RAINBIRD 1800 8 SERIES MFR - 10 DEGREE TRAJECTORY, ADJUST ARC TO FIT	8	26
2	RAINBIRD 1800 10 SERIES MFR - 10 DEGREE TRAJECTORY, ADJUST ARC TO FIT	10	34
3	RAINBIRD 1800 12 SERIES MFR - 10 DEGREE TRAJECTORY, ADJUST ARC TO FIT	12	45
4	RAINBIRD 1800 15 SERIES MFR - 30 DEGREE TRAJECTORY, ADJUST ARC TO FIT	15	42
5	RAINBIRD 1800 15 STRIP SERIES - 4X30 FT SIDE STRIPS	4X30	1.21
6	RAINBIRD 1800 15 STRIP SERIES - 4X15 FT END STRIPS	4X15	0.61
7	RAINBIRD 1800 15 STRIP SERIES - 4X10 FT END STRIPS	4X10	1.73
8	RAINBIRD 3500 5000 MODEL NOZZLE 4.0, ADJUSTABLE ARC 40-360 DEGREE, 25 DEGREE TRAJECTORY, ADJUST ARC TO FIT	40	3.5
9	RAINBIRD 3500 5000 MODEL NOZZLE 1.5, ADJUSTABLE ARC 40-360 DEGREE, 25 DEGREE TRAJECTORY, ADJUST ARC TO FIT	35	1.35
10	FEBCO 850V DOUBLE CHECK VALVE BACKFLOW ASSEMBLY, 1 1/2" SIZE, INSTALL WITH (1) GALVANIZED UNION AND JUMBO VALVE BOX	1	
11	RAINBIRD ESP-32M-55 SOLID STATE ELECTRONIC CONTROLLER WITH STAINLESS STEEL PEDALSTAL, 32 STATION CAPACITY WITH INTERNAL TRANSFORMER, ROUTE ALL POWER SUPPLY AND LOW VOLT WIRES IN CONDUIT PER NEC REQUIREMENTS	1	
12	CHAMPION 200RS-150 BRASS MANUAL DRAIN VALVE, SEE INSTALLATION DETAIL, INSTALL AT ALL MAINLINE LOW POINTS (NOT SHOWN)	1	
13	CHAMPION GCV-100V BRASS QUICK COUPLER VALVE, SINGLE LWS WITH LOCKING COVER, PROVIDE (1) KEY WITH HOSE SHIVEL, INSTALL AS DETAILED	1	
14	NOT SHOWN LOW VOLT WIRING SHALL BE 14 GA. SINGLE STRAND UFPL LISTED, WHITE/COMMON, RED/SIGNAL, NO IN-LINE SPLICES, SPLICE AT VALVES WITH 3M WEATHER PROOF CONNECTORS OR APPROVED EQUAL		
15	PRESSURE MAINLINE AND LATERALS SHALL BE SCH. 40 PVC, SOLVENT WELDED, TEFLON TAPE ALL THREADED JOINTS, BURY DEPTH MAINS-18 INCHES, LATERALS-12 INCHES MIN. SEE NOTES BELOW FOR PIPE BEDDING		
16	SLEEVES SHALL BE ESCH. 40 PVC, SIZE 2 TIMES PIPE SIZE, SEE NOTES BELOW FOR SLEEVE INSTALLATION		

NOTES

1. THIS PLAN IS DIAGNOSTIC. ALL PIPING, VALVES, HEADS, ETC. SHALL BE INSTALLED IN COMMON TRENCHES WHERE POSSIBLE. CONTRACTOR SHALL MAKE FIELD ADJUSTMENTS AS NEEDED TO OBTAIN COMPLETE COVERAGE. ADJUST LOCATION OF HEADS, ARCS, AND RADII AS NECESSARY. CONTRACTOR IS RESPONSIBLE FOR COMPLETE DRAINABILITY OF SYSTEM. ALL LATERALS AND MAINLINES SHALL SLOPE TO DRAIN LOCATIONS/ SPECIFICATIONS INDICATED.

2. REFER TO DETAIL DRAWINGS FOR INSTALLATION AND FURTHER SPECIFICATIONS. IF DETAIL NOT PROVIDED, CONTRACTOR SHALL USE MANUFACTURER'S RECOMMENDED INSTALLATION PROCEDURES.

3. ALL MAINLINE PIPES SHALL BE PRESSURE TESTED PRIOR TO BACKFILL. PRESSURE TEST SHALL BE AT MAXIMUM LINE PRESSURE HELD FOR 1 HOUR WITH LESS THAN 5 PERCENT PRESSURE LOSS, OR 100 PSI FOR 15 MINUTES WITH LESS THAN 5% STATIC PRESSURE LOSS.

4. BACKFILL AROUND MAINLINES AND LATERALS SHALL BE FREE OR ROCKS AND DEBRIS. PIPE BEDDING MATERIAL SHALL BE SAND OR FINE SILTS.

5. NO IN-LINE WIRE SPLICES WILL BE ALLOWED. SUPPLY VALVE BOXES (AMETEK, CARSON, OR EQUAL 12" STANDARD) AT COMMON VALVE LOCATIONS WITH NO ROCKS LARGER THAN 1 INCH.

6. CONTRACTOR SHALL PROVIDE SLEEVES IN LOCATIONS SHOWN. SLEEVE DEPTH SHALL BE 18 INCHES BELOW FINISH GRADE AND EXTEND BEYOND CURB OR EDGE OF PAVEMENT A MINIMUM OF 12 INCHES. SEE SPEC FOR SLEEVE TYPE. TAPE ENDS OF SLEEVES TO BE USED FOR FUTURE PIPES, AND GROUND OR EDGE OF PAVEMENT A MINIMUM OF 12 INCHES. SEE SPEC FOR SLEEVE TYPE.

7. CONTRACTOR SHALL PROVIDE OWNER WITH A SET OF "AS-BUILT" RECORD DRAWINGS SHOWING ACTUAL LOCATIONS OF ALL SPRINKLER SYSTEM EQUIPMENT. CONTRACTOR SHALL OBTAIN OWNER'S SIGNATURE AND MAINTENANCE RECORDS.

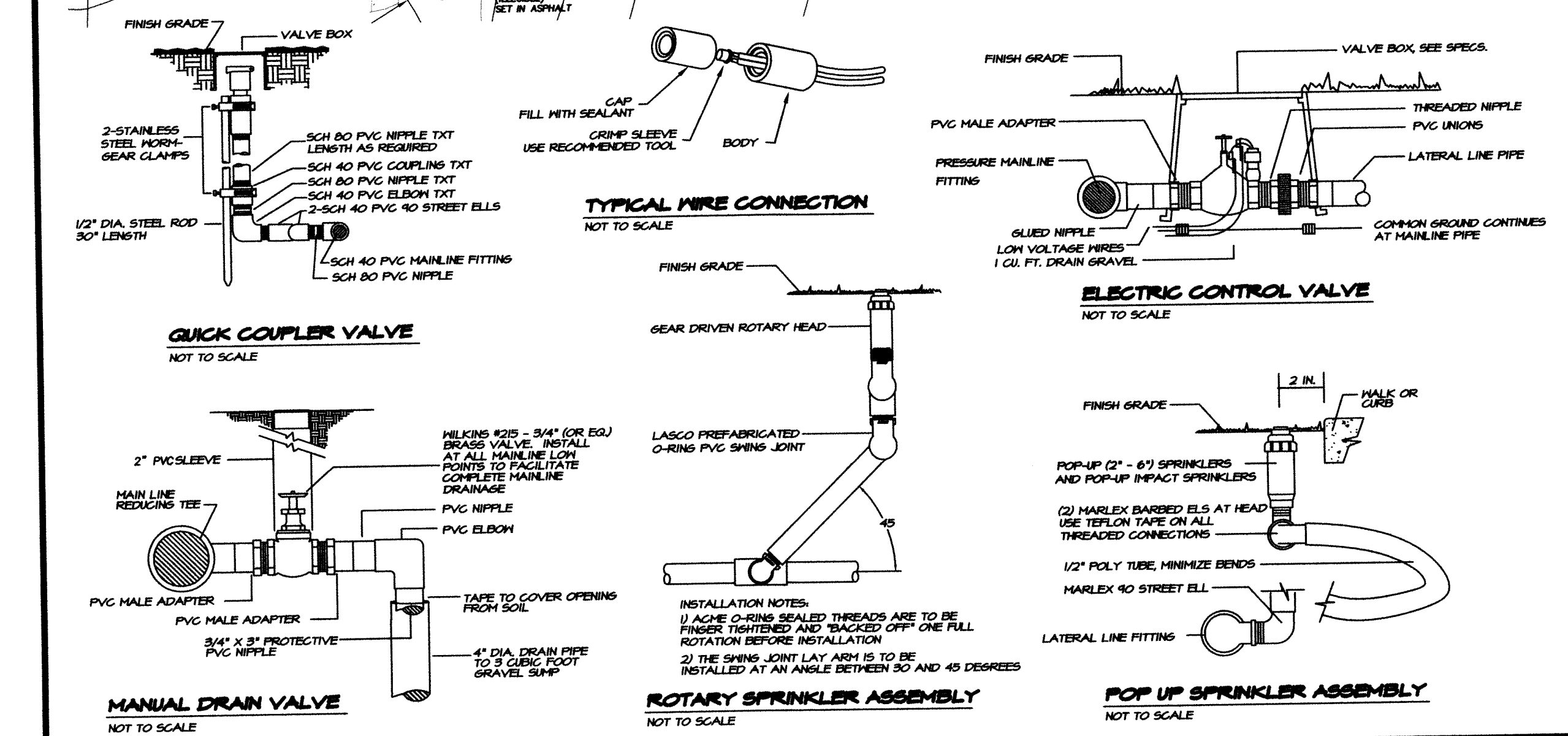
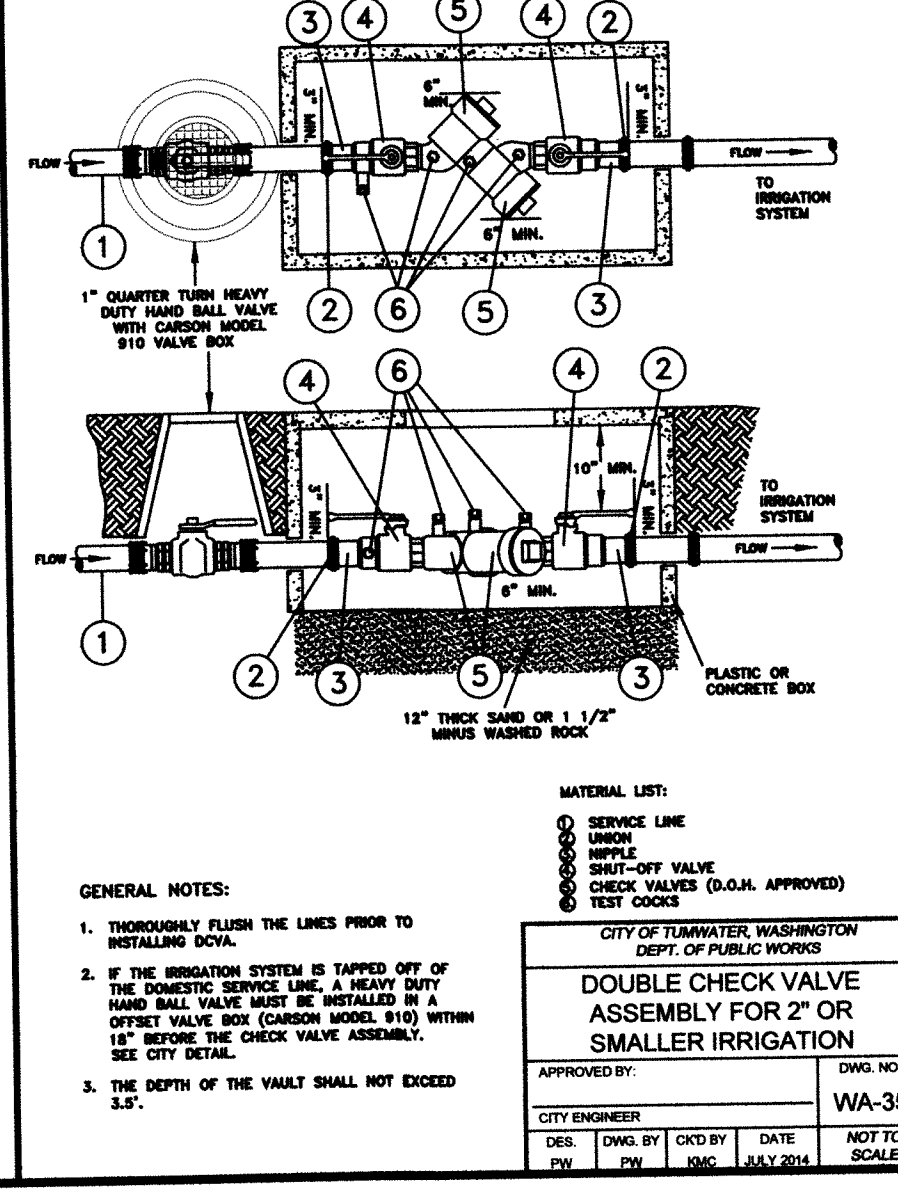
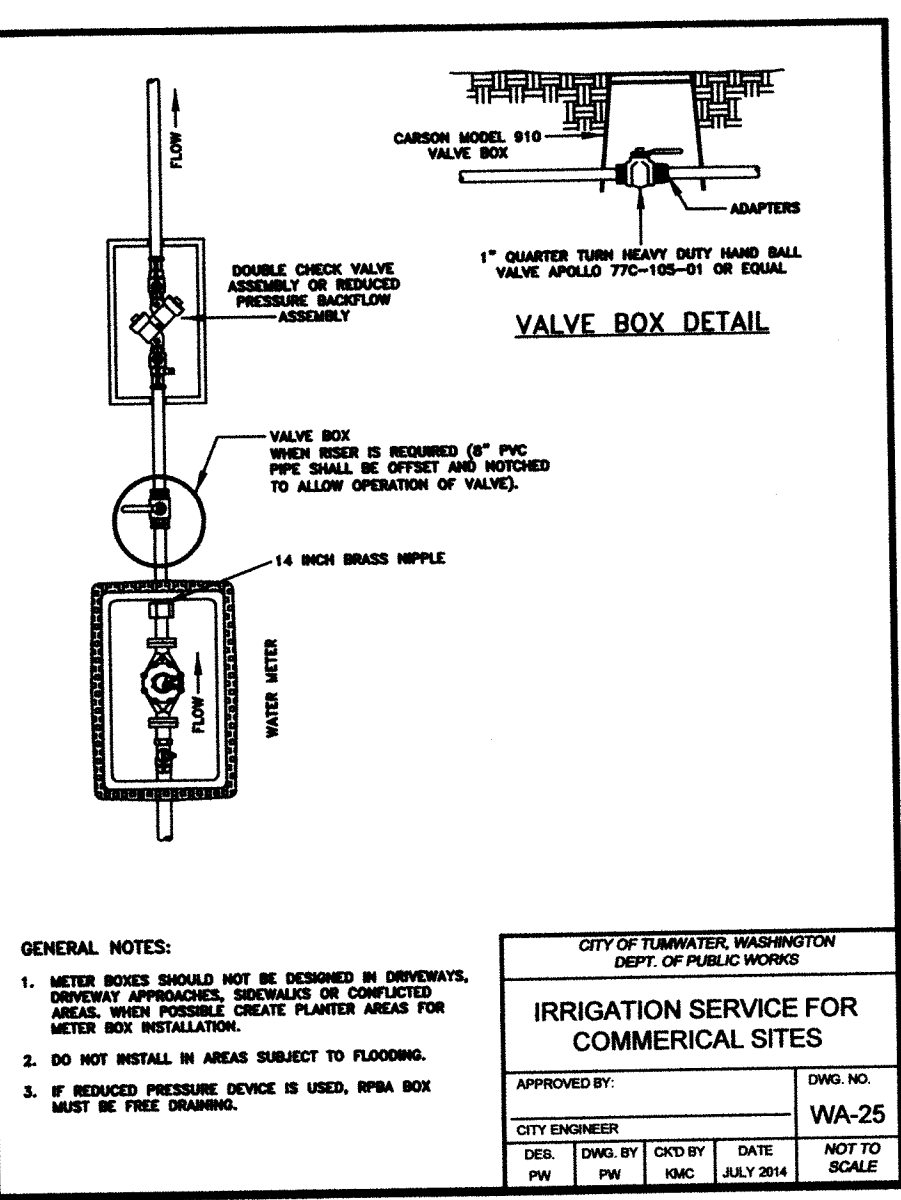
8. CONTRACTOR SHALL GUARANTEE IN WRITING ALL MATERIALS AND WORKMANSHIP FOR ONE YEAR FOLLOWING FINAL ACCEPTANCE OF SYSTEM INSTALLATION.

VALVE CHART

ZONE	SIZE	FLOW	DESCRIPTION
1	10"	22.6	TURF STRIP POP-UPS
2	10"	16.2	OPEN SPACE ROTORS
3	15"	32.3	TURF STRIP POP-UPS
4	10"	21.6	TURF STRIP POP-UPS
5	10"	20.0	TURF STRIP POP-UPS
6	10"	19.4	TURF STRIP POP-UPS
7	15"	27.3	OPEN SPACE POP-UPS
8	15"	26.0	OPEN SPACE POP-UPS
9	15"	25.4	TURF STRIP POP-UPS
10	15"	27.3	OPEN SPACE POP-UPS
11	15"	25.4	TURF STRIP POP-UPS
12	15"	18.7	OPEN SPACE POP-UPS
13	15"	18.2	TURF STRIP POP-UPS
14	15"	29.6	TURF STRIP POP-UPS
15	15"	25.7	TURF STRIP POP-UPS
16	15"	28.0	TURF STRIP POP-UPS
17	15"	24.6	TURF STRIP POP-UPS
18	15"	25.4	TURF STRIP POP-UPS
19	15"	38.0	OPEN SPACE ROTORS
20	15"	38.0	OPEN SPACE ROTORS
21	10"	23.2	OPEN SPACE POP-UPS
22	15"	32.3	TURF STRIP POP-UPS
23	10"	24.3	TURF STRIP POP-UPS
24	15"	29.0	TURF STRIP POP-UPS
25	15"	21.0	TURF STRIP POP-UPS
26	10"	28.3	TURF STRIP POP-UPS
27	15"	14.4	OPEN SPACE POP-UPS
28	15"	26.9	OPEN SPACE POP-UPS
29	15"	27.1	OPEN SPACE POP-UPS
30	15"	38.5	STORM POND ROTORS
31	15"	38.5	STORM POND ROTORS
32	15"	38.5	STORM POND ROTORS

APPROVED FOR CONSTRUCTION

BY: TUMWATER COMMUNITY PLANNING & DEVELOPMENT DATE: APPROVAL EXPIRES:



DESIGNED BY: CADL
DRAWN BY: DL
CHECKED BY: CA
DATE: DEC 2005
SCALE: 1"=40'

HATTON GODAT PANTIER AND SURVEYORS
ENGINEERS
3910 MARTIN WAY E. SUITE B
OLYMPIA, WA 98506
TEL: 360.943.1599 FAX: 360.357.6299
hattonpantier.com

REVISIONS: DATE: 05/13/15
CITY COMMENTS: 05/13/15
64 LOT UPDATE 02/28/17
PLAN UPDATE 02/28/17

KIRSOP TOWNHOMES
6335 KIRSOP ROAD SW, TUMWATER, WA 98512
IRRIGATION PLAN
A PORTION OF THE SE 1/4 OF THE NE 1/4 OF SECTION 5, TOWNSHIP 17 N, RANGE 2 WEST, W.M.

TUM-15-0281
AGENCY NO: 2003103430
SHEET: 53 OF 53
E:\landscape\01-000\01-091
INDEX: 01-091-LA3.dwg
JOB: 01-091