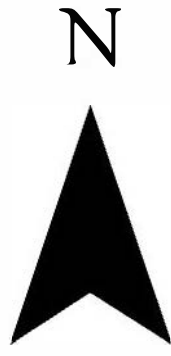


Future Land Use Designation Changes – Draft 10/1/2025

0 0.25 0.5 1 Miles

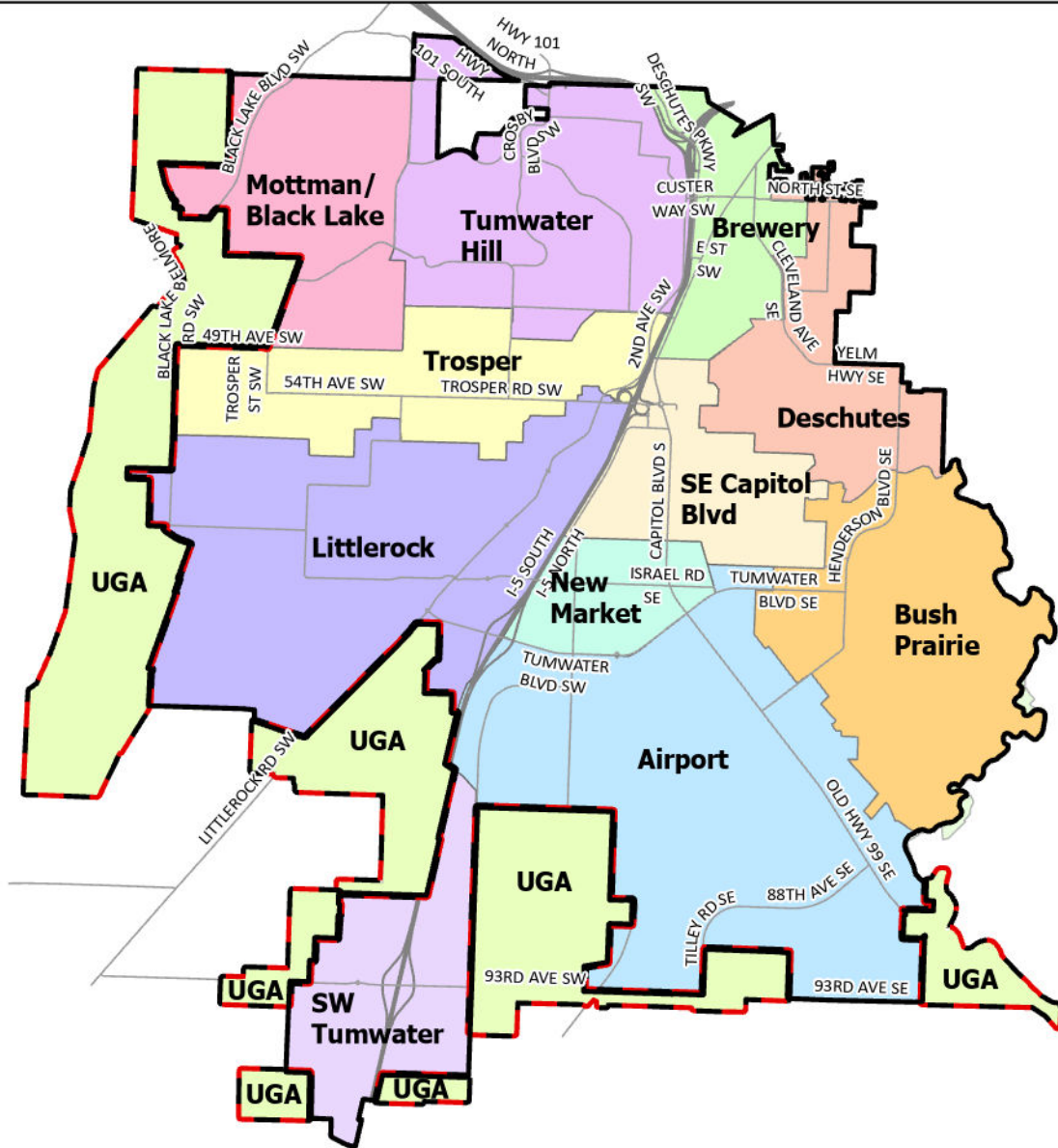


Amended Land Use Designation Names	
Previous Land Use Designation	New Land Use Designation
SFL - Single Family Low Density	LDR - Low Density Residential
SFM - Single Family Medium Density	LDR - Low Density Residential
MFM - Multi-Family Medium Density	MDR - Medium Density Residential
MFH - Multi-Family High Density	HDR - High Density Residential

- Amended Land Use Designations**
- ① SFL Single Family Low to MDR Medium Density Residential
 - ② Public Institutional to Mixed Use

- Land Use Designations**
- Airport Related Industrial
 - Brewery District
 - Capitol Boulevard Community
 - General Commercial
 - Heavy Industrial
 - High Density Residential
 - Light Industrial
 - Low Density Residential
 - Manufactured Home Park
 - Medium Density Residential
 - Mixed Use
 - Neighborhood Commercial
 - New Market Historic District
 - Parks and Open Space
 - Public Institutional
 - Residential/Sensitive Resource
 - Tumwater Town Center
 - Utilities
 - Public School
 - NATURAL GAS (Interstate)
 - Natural Gas
 - Refined Petroleum
 - City Limits
 - UGA

Map created by the City of Tumwater Community Development Department using ArcGIS Pro 3.2.1.
This map product is prepared by the City of Tumwater Community Development Department for and intended for internal department use. The City of Tumwater or agents thereof make no warranties, either expressed or implied in matters of a public or private access or in matters that can be confirmed by an official survey by a professional land surveyor or in the merchantability or fitness of the data included herein for a particular purpose. The user agrees to indemnify and hold the City of Tumwater harmless from any and all damages, liability, cost or loss including reasonable attorneys' fees and costs of defense that the City of Tumwater may suffer as a result of any claims, demands, costs, or judgements arising from any use of this product and any errors or omissions.



Neighborhoods of Tumwater

0 0.4 0.8 1.6 Miles



City Limits

UGA

Airport

Brewery

Bush Prairie

Deschutes

Littlerock

Mottman/Black Lake

New Market

SE Capitol Boulevard

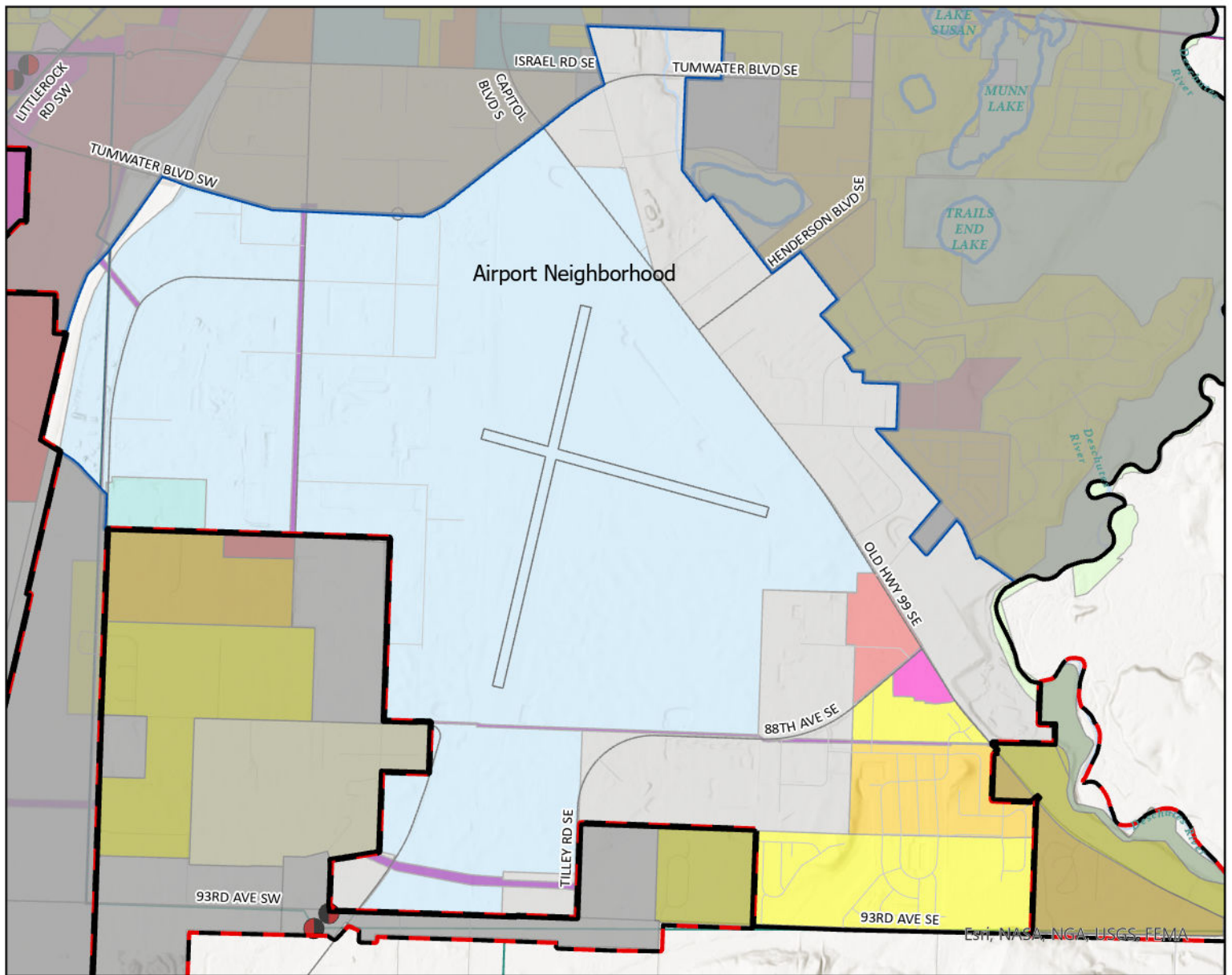
SW Tumwater

Trosper

Tumwater Hill

Map created by the City of Tumwater Community Development Department using ArcGIS Pro 3.4.3.

This map product is prepared by the City of Tumwater Community Development Department for and intended for internal department use. The City of Tumwater or agents thereof make no warranties, either expressed or implied in matters of a public or private access or in matters that can be confirmed by an official survey by a professional land surveyor or in the merchantability or fitness of the data included herein for a particular purpose. The user agrees to indemnify and hold the City of Tumwater harmless from any and all damages, liability, cost or loss including reasonable attorneys' fees and costs of defense that the City of Tumwater may suffer as a result of any claims, demands, costs, or judgments arising from any use of this product and any errors or omissions.



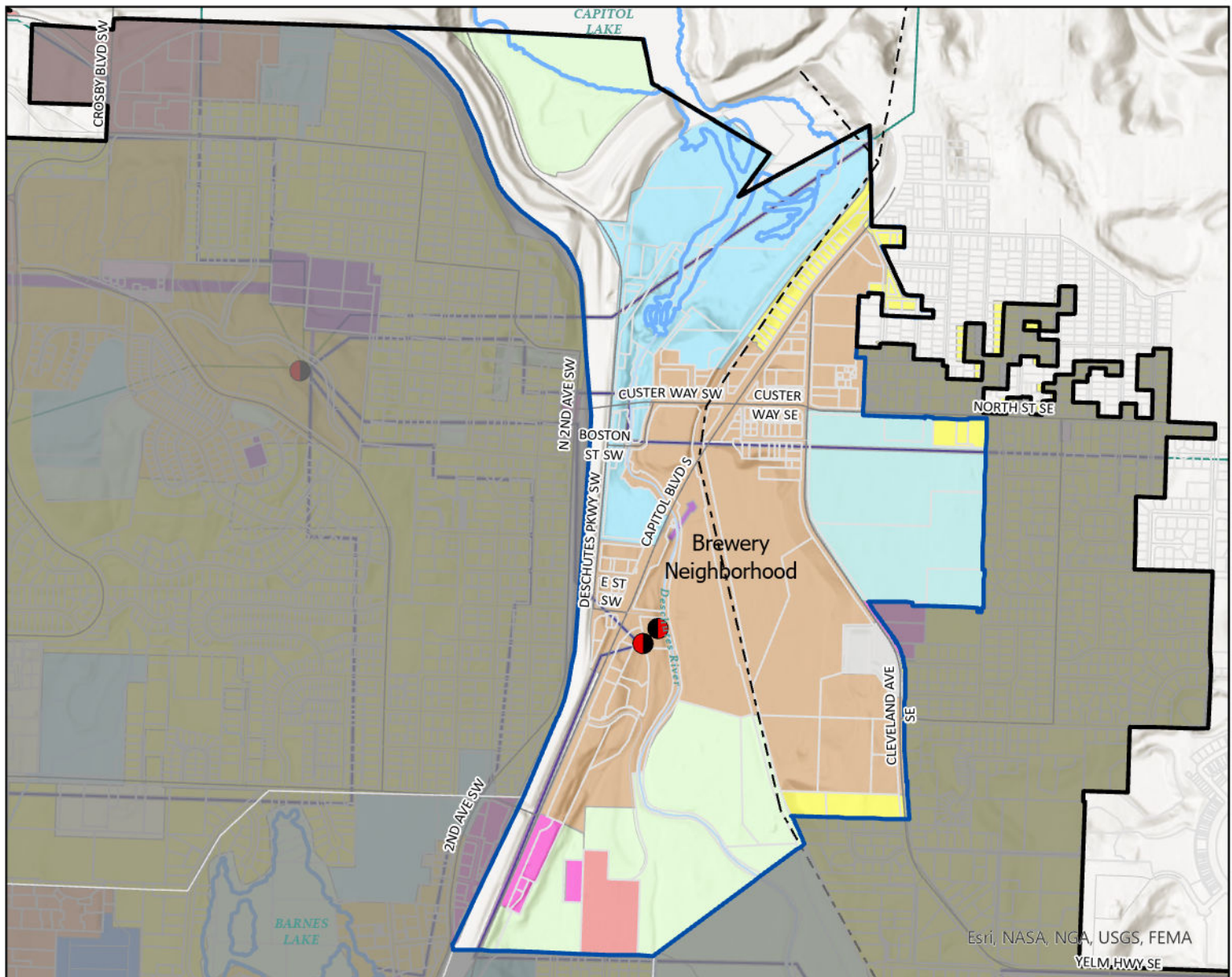
Airport Neighborhood Future Land Use

0 0.17 0.35 0.7 Miles



- | | |
|--------------------------------|-------------------------|
| Airport Related Industrial | Mixed Use |
| Capitol Boulevard Community | Neighborhood Commercial |
| Tumwater Town Center | General Commercial |
| Residential/Sensitive Resource | Utilities |
| Low Density Residential | Light Industrial |
| Medium Density Residential | Tumwater UGA |
| High Density Residential | City Limits |
| Parks/Open Space | |
| Public Institutional | |

Map created by the City of Tumwater Transportation and Engineering Department using ArcGIS Pro 3.2.1. This map product is prepared by the City of Tumwater Transportation and Engineering Department for and intended for internal department use. The City of Tumwater or agents thereof make no warranties, either expressed or implied in matters of a public or private access or in matters that can be confirmed by an official survey by a professional land surveyor or in the merchantability or fitness of the data included herein for a particular purpose. The user agrees to indemnify and hold the City of Tumwater harmless from any and all damages, liability, cost or loss including reasonable attorneys' fees and costs of defense that the City of Tumwater may suffer as a result of any claims, demands, costs, or judgements arising from any use of this product and any errors or omissions.



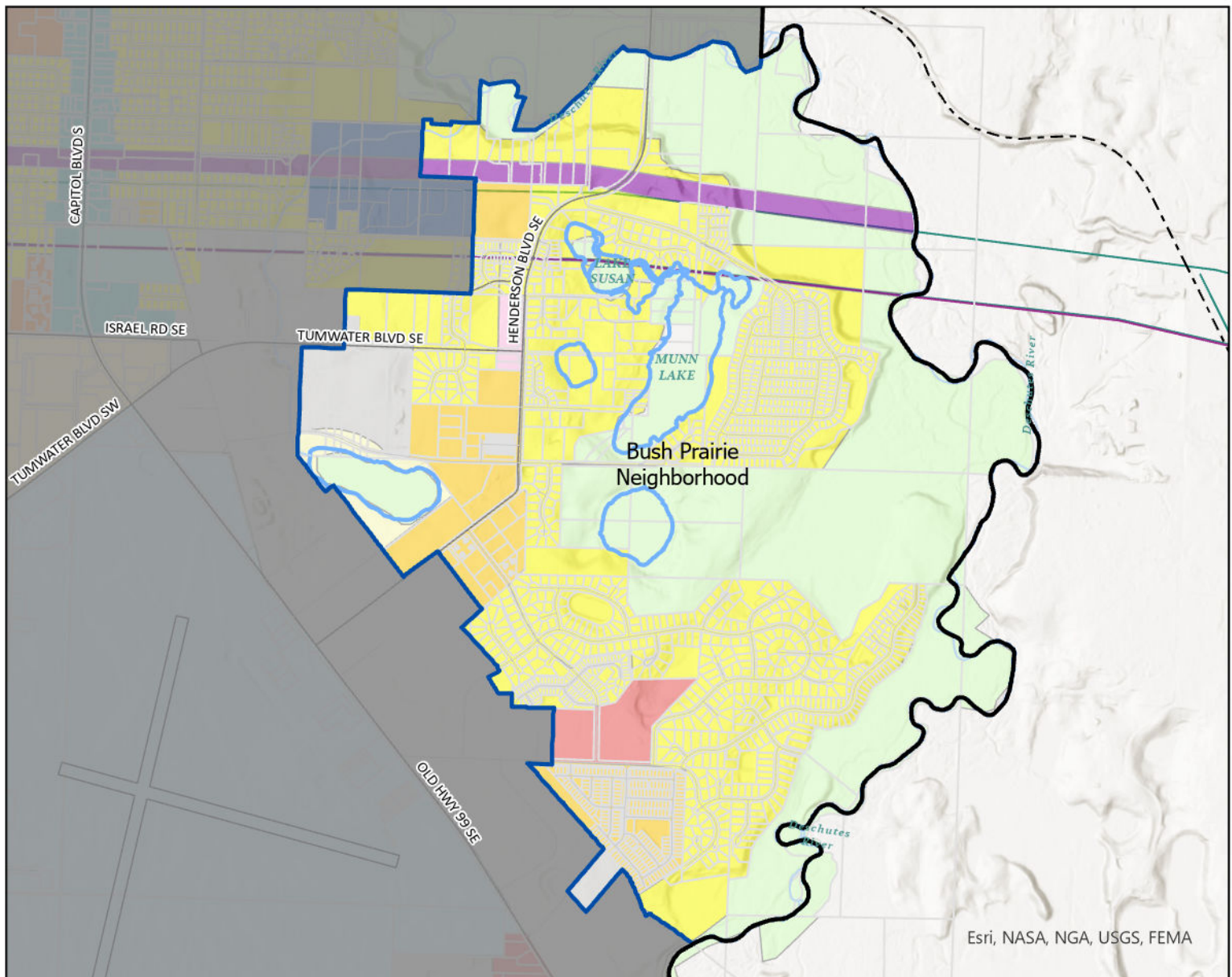
Brewery District Future Land Use



- | | |
|--------------------------------|-------------------------|
| Brewery District | Public Institutional |
| Capitol Boulevard Community | Mixed Use |
| Manufactured Home Park | Neighborhood Commercial |
| New Market Historic District | General Commercial |
| Residential/Sensitive Resource | Utilities |
| Low Density Residential | Light Industrial |
| Medium Density Residential | City Limits |
| High Density Residential | |
| Parks/Open Space | |

0 0.1 0.2 0.4 Miles

Map created by the City of Tumwater Transportation and Engineering Department using ArcGIS Pro 3.2.1. This map product is prepared by the City of Tumwater Transportation and Engineering Department for and intended for internal department use. The City of Tumwater or agents thereof make no warranties, either expressed or implied in matters of a public or private access or in matters that can be confirmed by an official survey by a professional land surveyor or in the merchantability or fitness of the data included herein for a particular purpose. The user agrees to indemnify and hold the City of Tumwater harmless from any and all damages, liability, cost or loss including reasonable attorneys' fees and costs of defense that the City of Tumwater may suffer as a result of any claims, demands, costs, or judgements arising from any use of this product and any errors or omissions.



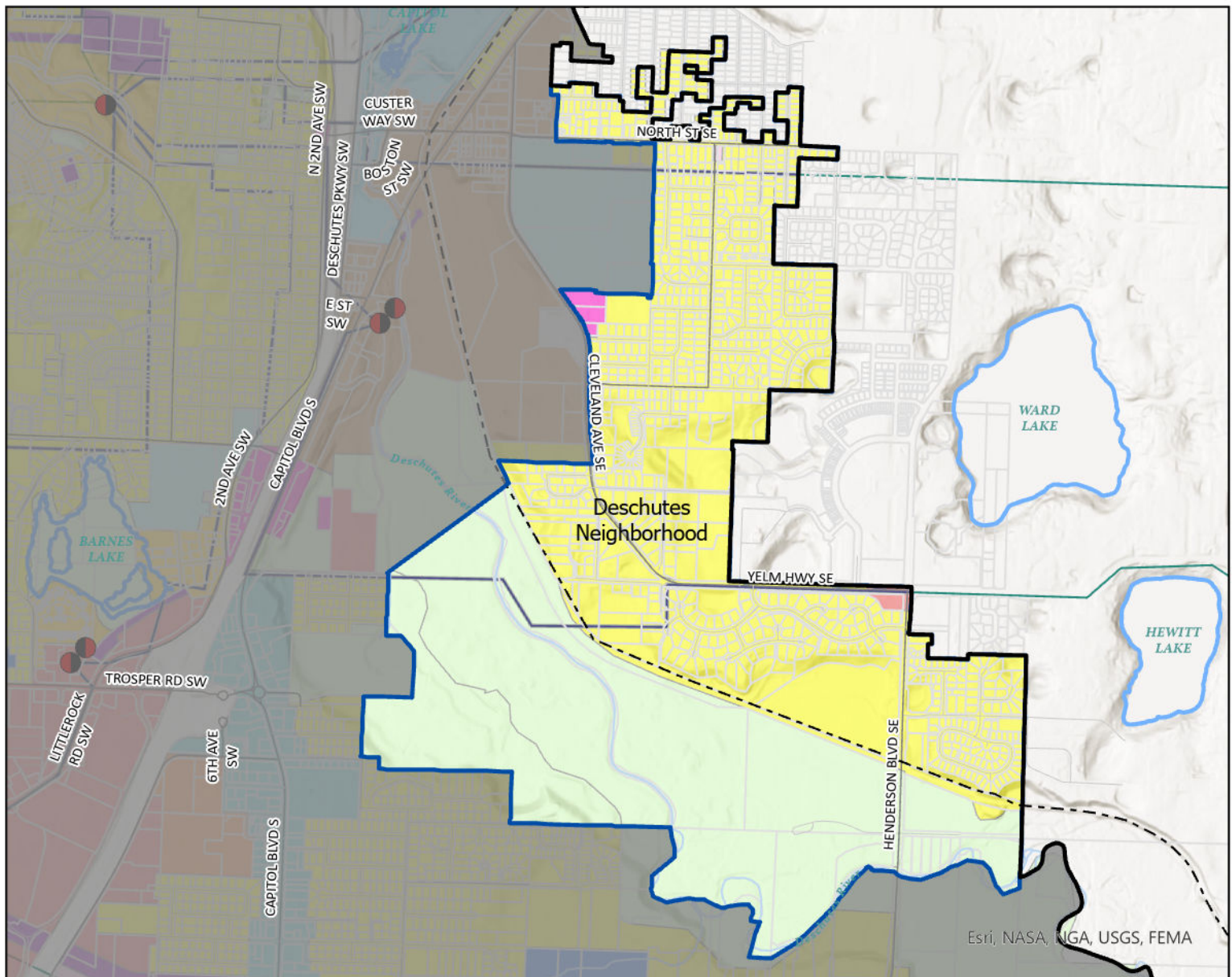
Bush Prairie Future Land Use



- | | |
|--------------------------------|-------------------------|
| Airport Related Industrial | Parks/Open Space |
| Capitol Boulevard Community | Public Institutional |
| Manufactured Home Park | Neighborhood Commercial |
| Tumwater Town Center | General Commercial |
| Residential/Sensitive Resource | Utilities |
| Low Density Residential | Light Industrial |
| Medium Density Residential | City Limits |
| High Density Residential | |

0 0.13 0.25 0.5 Miles

Map created by the City of Tumwater Transportation and Engineering Department using ArcGIS Pro 3.2.1. This map product is prepared by the City of Tumwater Transportation and Engineering Department for and intended for internal department use. The City of Tumwater or agents thereof make no warranties, either expressed or implied in matters of a public or private access or in matters that can be confirmed by an official survey by a professional land surveyor or in the merchantability or fitness of the data included herein for a particular purpose. The user agrees to indemnify and hold the City of Tumwater harmless from any and all damages, liability, cost or loss including reasonable attorneys' fees and costs of defense that the City of Tumwater may suffer as a result of any claims, demands, costs, or judgements arising from any use of this product and any errors or omissions.



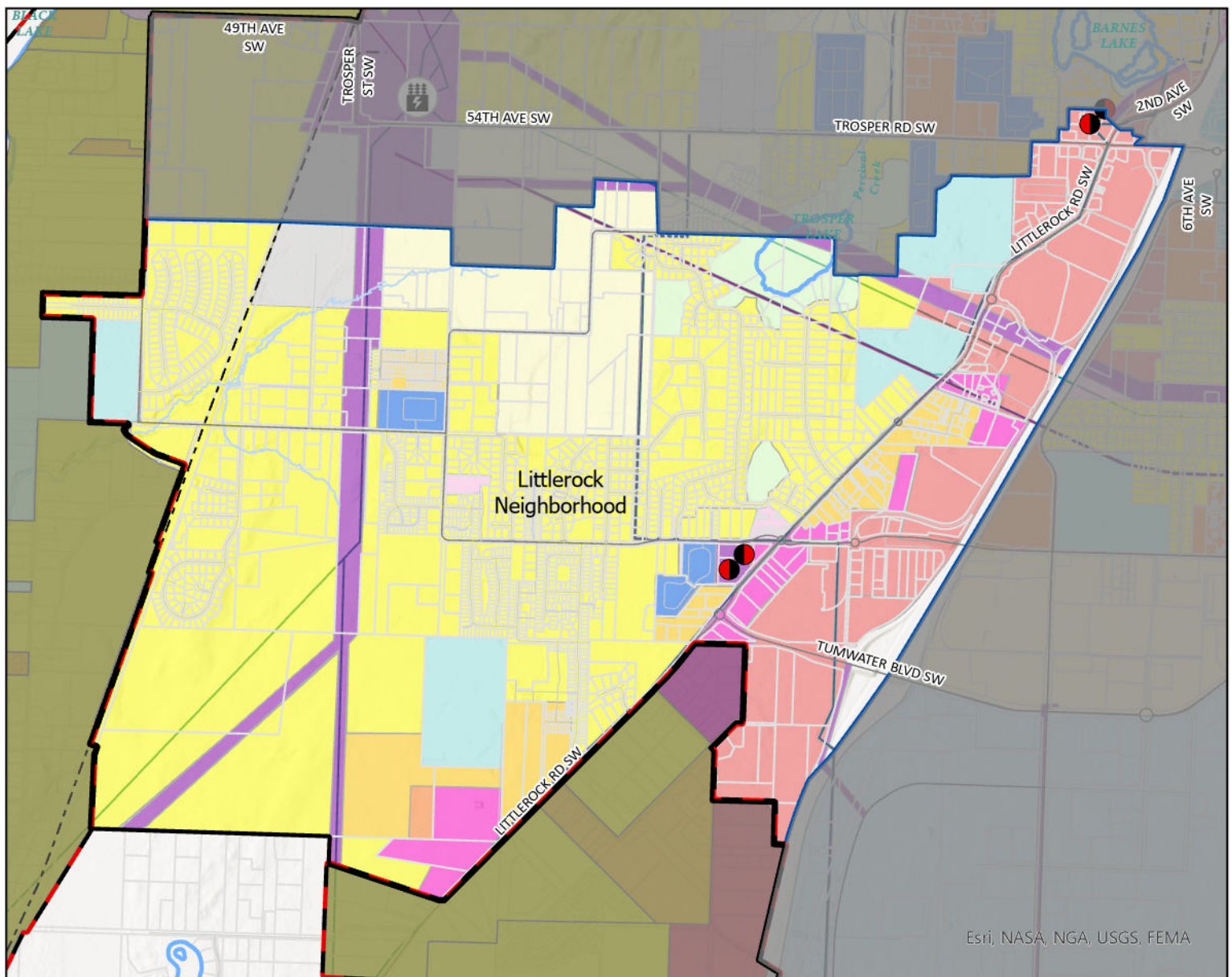
Deschutes Future Land Use



- | | |
|------------------------------|-------------------------|
| Brewery District | Public Institutional |
| Capitol Boulevard Community | Mixed Use |
| Manufactured Home Park | Neighborhood Commercial |
| New Market Historic District | General Commercial |
| Low Density Residential | Utilities |
| Medium Density Residential | Light Industrial |
| High Density Residential | City Limits |
| Parks/Open Space | |

0 0.13 0.25 0.5 Miles

Map created by the City of Tumwater Transportation and Engineering Department using ArcGIS Pro 3.2.1. This map product is prepared by the City of Tumwater Transportation and Engineering Department for and intended for internal department use. The City of Tumwater or agents thereof make no warranties, either expressed or implied in matters of a public or private access or in matters that can be confirmed by an official survey by a professional land surveyor or in the merchantability or fitness of the data included herein for a particular purpose. The user agrees to indemnify and hold the City of Tumwater harmless from any and all damages, liability, cost or loss including reasonable attorneys' fees and costs of defense that the City of Tumwater may suffer as a result of any claims, demands, costs, or judgements arising from any use of this product and any errors or omissions.



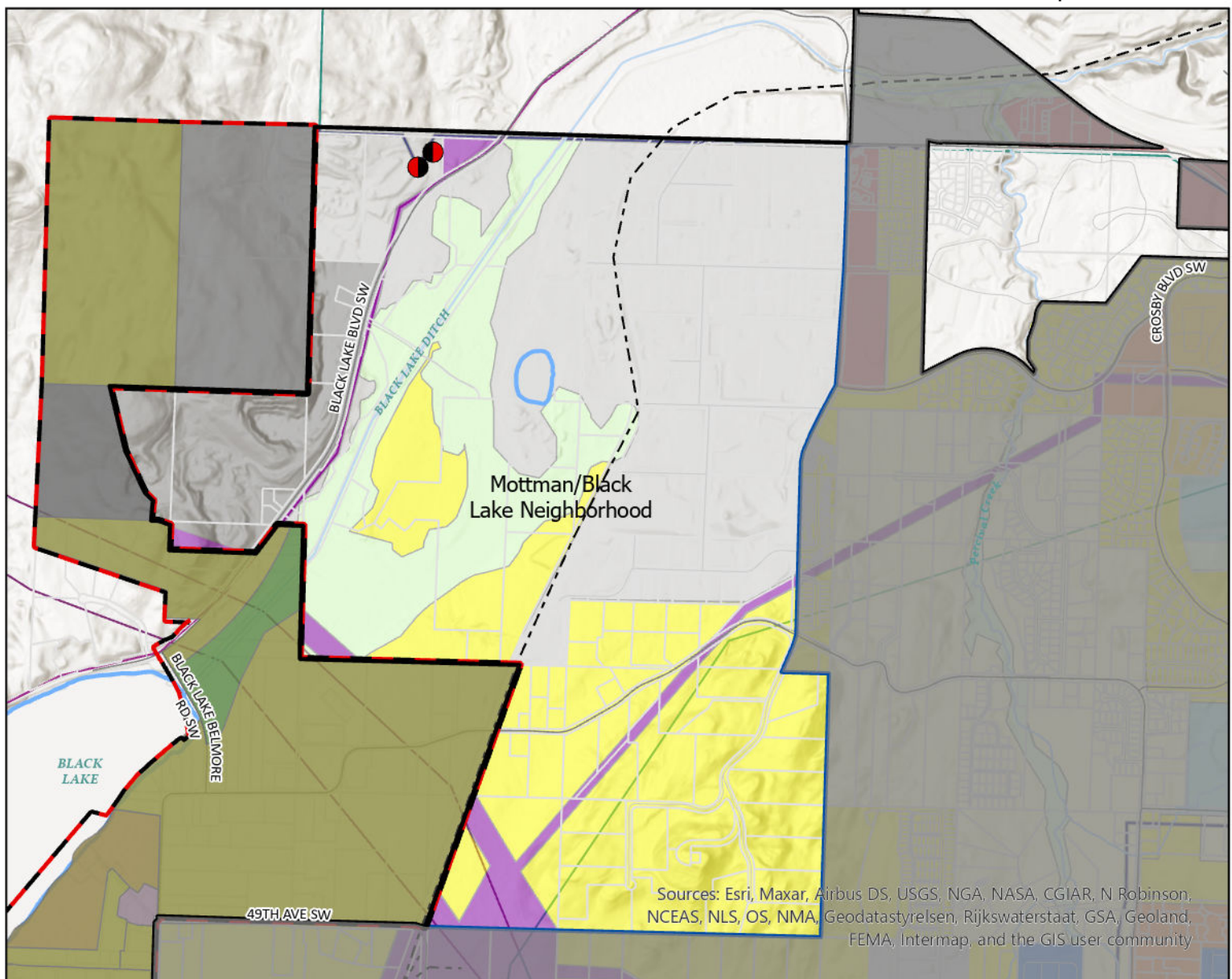
Littlerock Future Land Use



- | | |
|--------------------------------|-------------------------|
| Airport Related Industrial | Public Institutional |
| Capitol Boulevard Community | Mixed Use |
| Manufactured Home Park | Neighborhood Commercial |
| Tumwater Town Center | General Commercial |
| Residential/Sensitive Resource | Utilities |
| Low Density Residential | Light Industrial |
| Medium Density Residential | Tumwater UGA |
| High Density Residential | City Limits |
| Parks/Open Space | |

0 0.15 0.3 0.6 Miles

Map created by the City of Tumwater Transportation and Engineering Department using ArcGIS Pro 3.2.1. This map product is prepared by the City of Tumwater Transportation and Engineering Department for and intended for internal department use. The City of Tumwater or agents thereof make no warranties, either expressed or implied in matters of a public or private access or in matters that can be confirmed by an official survey by a professional land surveyor or in the merchantability or fitness of the data included herein for a particular purpose. The user agrees to indemnify and hold the City of Tumwater harmless from any and all damages, liability, cost or loss including reasonable attorneys' fees and costs of defense that the City of Tumwater may suffer as a result of any claims, demands, costs, or judgements arising from any use of this product and any errors or omissions.



Mottman/Black Lake Future Land Use

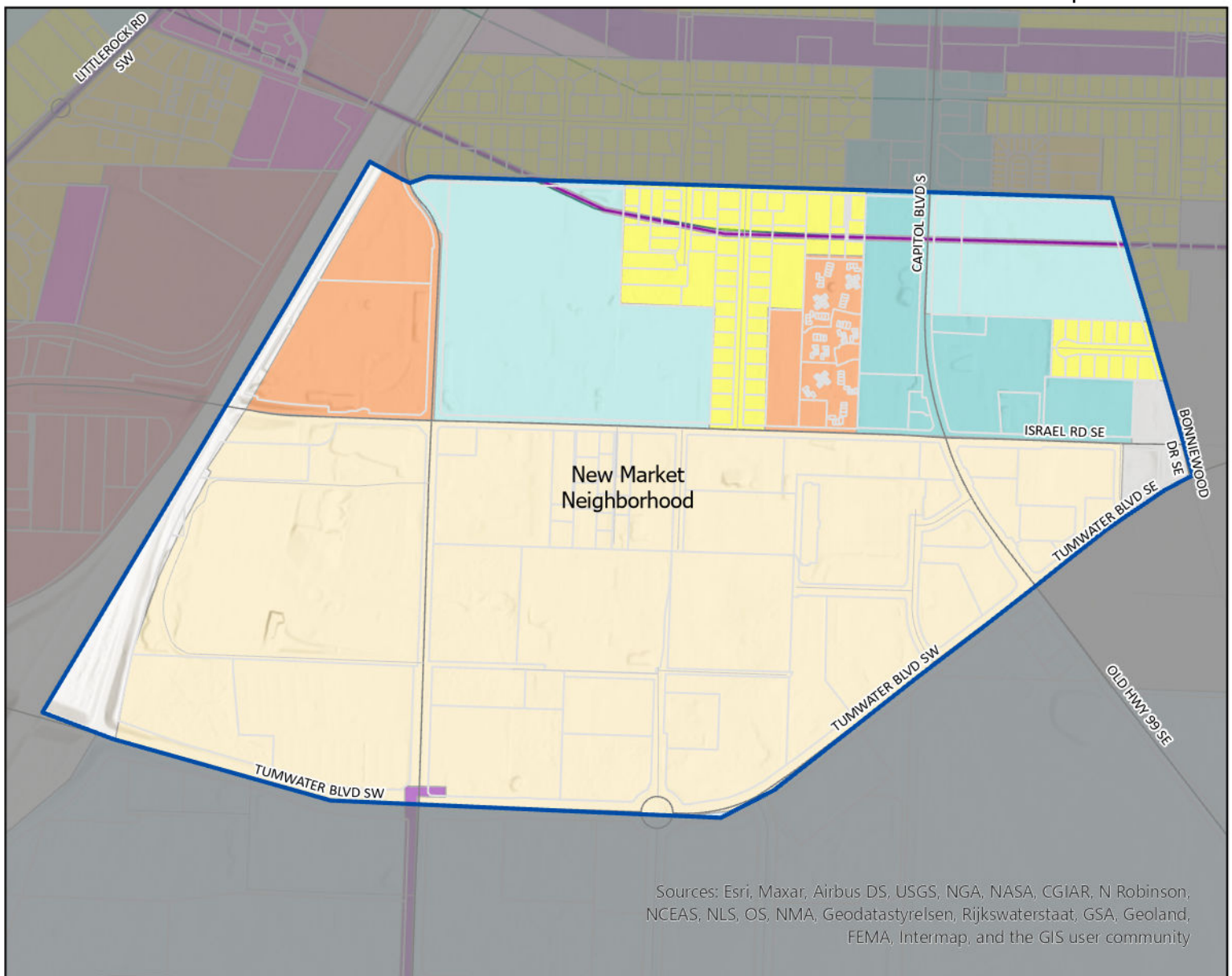
0 0.1 0.2 0.4 Miles



- Manufactured Home Park
- Residential/Sensitive Resource
- Low Density Residential
- Medium Density Residential
- High Density Residential
- Parks/Open Space
- Public Institutional
- General Commercial
- Utilities
- Heavy Industrial
- Light Industrial
- Tumwater UGA
- City Limits

Map created by the City of Tumwater Transportation and Engineering Department using ArcGIS Pro 3.2.1.

This map product is prepared by the City of Tumwater Transportation and Engineering Department for and intended for internal department use. The City of Tumwater or agents thereof make no warranties, either expressed or implied in matters of a public or private access or in matters that can be confirmed by an official survey by a professional land surveyor or in the merchantability or fitness of the data included herein for a particular purpose. The user agrees to indemnify and hold the City of Tumwater harmless from any and all damages, liability, cost or loss including reasonable attorneys' fees and costs of defense that the City of Tumwater may suffer as a result of any claims, demands, costs, or judgements arising from any use of this product and any errors or omissions.



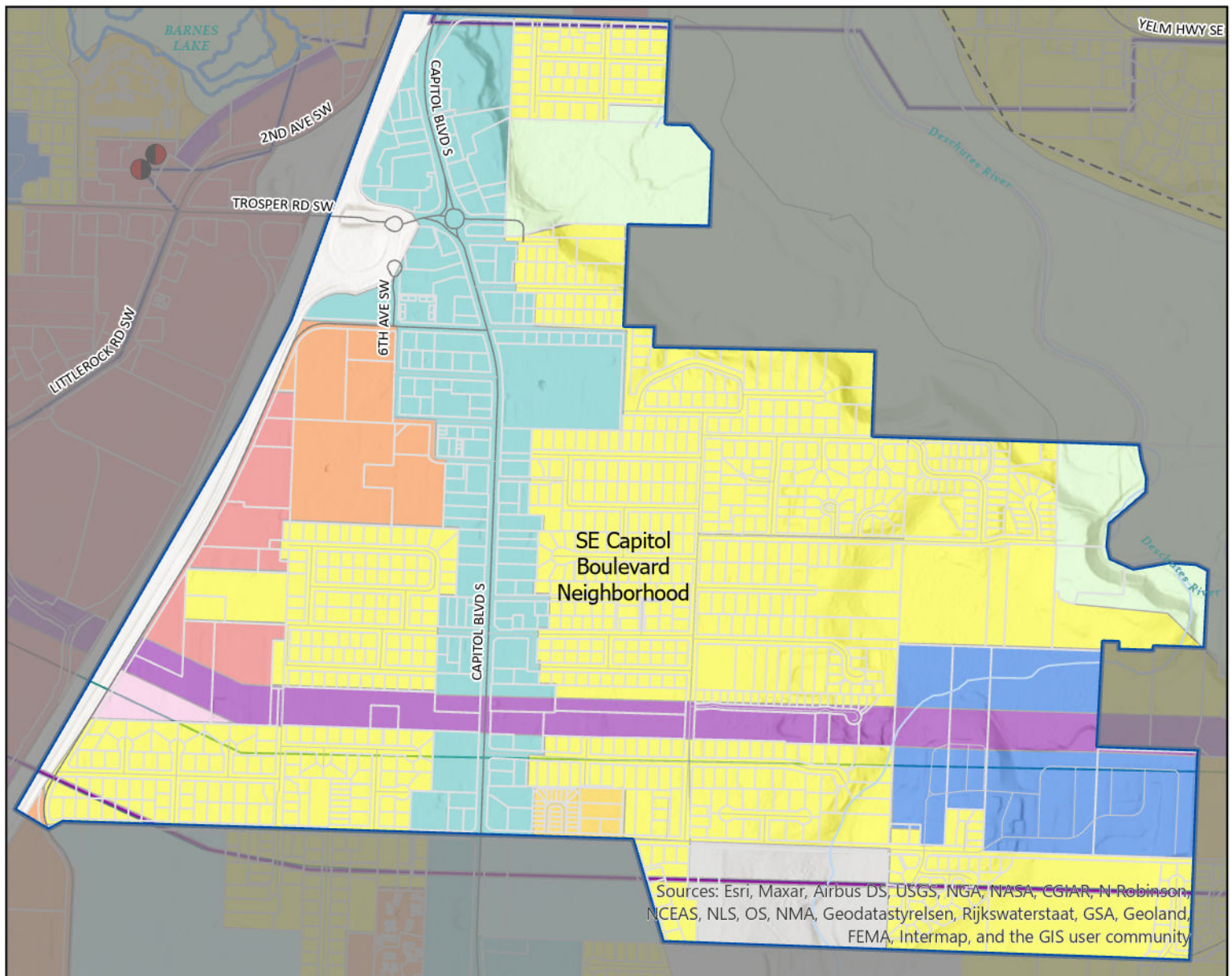
New Market Future Land Use



- Airport Related Industrial
- Capitol Boulevard Community
- Tumwater Town Center
- Low Density Residential
- Medium Density Residential
- High Density Residential
- Public Institutional
- Mixed Use
- Neighborhood Commercial
- General Commercial
- Utilities
- Light Industrial
- City Limits

0 0.05 0.1 0.2 Miles

Map created by the City of Tumwater Transportation and Engineering Department using ArcGIS Pro 3.2.1. This map product is prepared by the City of Tumwater Transportation and Engineering Department for and intended for internal department use. The City of Tumwater or agents thereof make no warranties, either expressed or implied in matters of a public or private access or in matters that can be confirmed by an official survey by a professional land surveyor or in the merchantability or fitness of the data included herein for a particular purpose. The user agrees to indemnify and hold the City of Tumwater harmless from any and all damages, liability, cost or loss including reasonable attorneys' fees and costs of defense that the City of Tumwater may suffer as a result of any claims, demands, costs, or judgements arising from any use of this product and any errors or omissions.



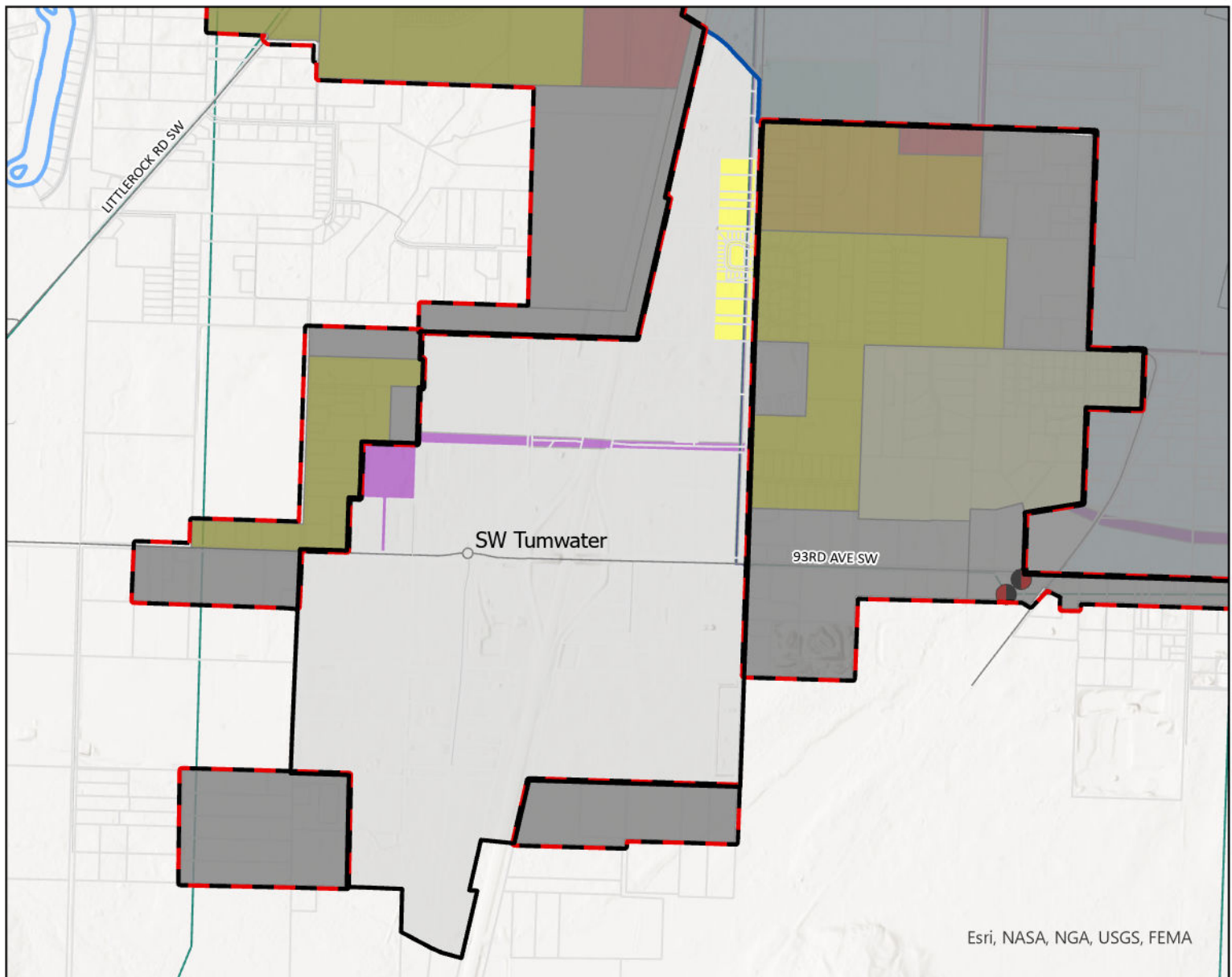
SE Capitol Boulevard Future Land Use

0 0.07 0.15 0.3 Miles



- Capitol Boulevard Community
- Manufactured Home Park
- Low Density Residential
- Medium Density Residential
- High Density Residential
- Parks/Open Space
- Public Institutional
- Mixed Use
- Neighborhood Commercial
- General Commercial
- Utilities
- Light Industrial
- City Limits

Map created by the City of Tumwater Transportation and Engineering Department using ArcGIS Pro 3.2.1. This map product is prepared by the City of Tumwater Transportation and Engineering Department for and intended for internal department use. The City of Tumwater or agents thereof make no warranties, either expressed or implied in matters of a public or private access or in matters that can be confirmed by an official survey by a professional land surveyor or in the merchantability or fitness of the data included herein for a particular purpose. The user agrees to indemnify and hold the City of Tumwater harmless from any and all damages, liability, cost or loss including reasonable attorneys' fees and costs of defense that the City of Tumwater may suffer as a result of any claims, demands, costs, or judgements arising from any use of this product and any errors or omissions.



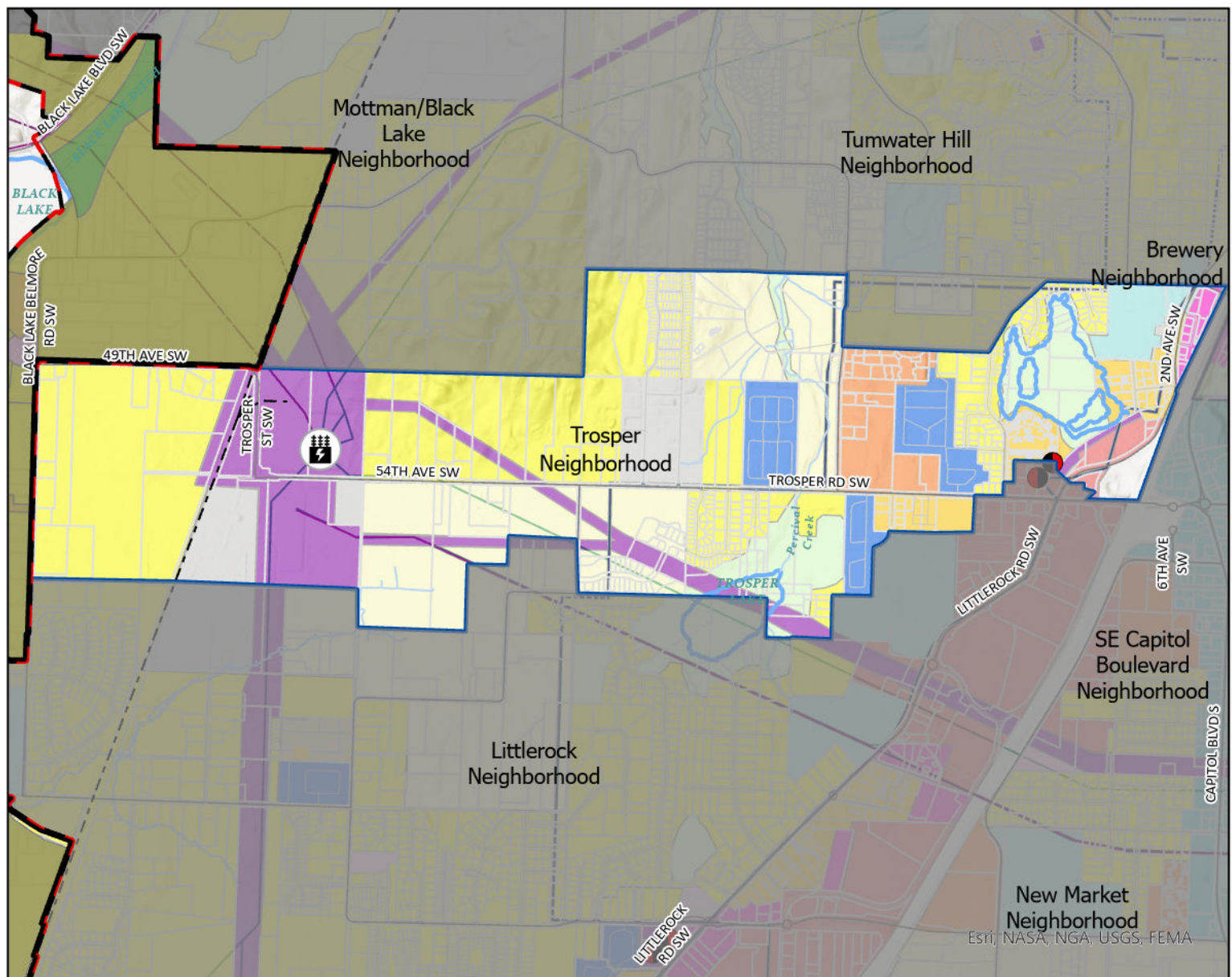
SW Tumwater Future Land Use



- Airport Related Industrial
- Low Density Residential
- Public Institutional
- Utilities
- Light Industrial
- Tumwater UGA
- City Limits

0 0.13 0.25 0.5 Miles

Map created by the City of Tumwater Transportation and Engineering Department using ArcGIS Pro 3.2.1. This map product is prepared by the City of Tumwater Transportation and Engineering Department for and intended for internal department use. The City of Tumwater or agents thereof make no warranties, either expressed or implied in matters of a public or private access or in matters that can be confirmed by an official survey by a professional land surveyor or in the merchantability or fitness of the data included herein for a particular purpose. The user agrees to indemnify and hold the City of Tumwater harmless from any and all damages, liability, cost or loss including reasonable attorneys' fees and costs of defense that the City of Tumwater may suffer as a result of any claims, demands, costs, or judgements arising from any use of this product and any errors or omissions.



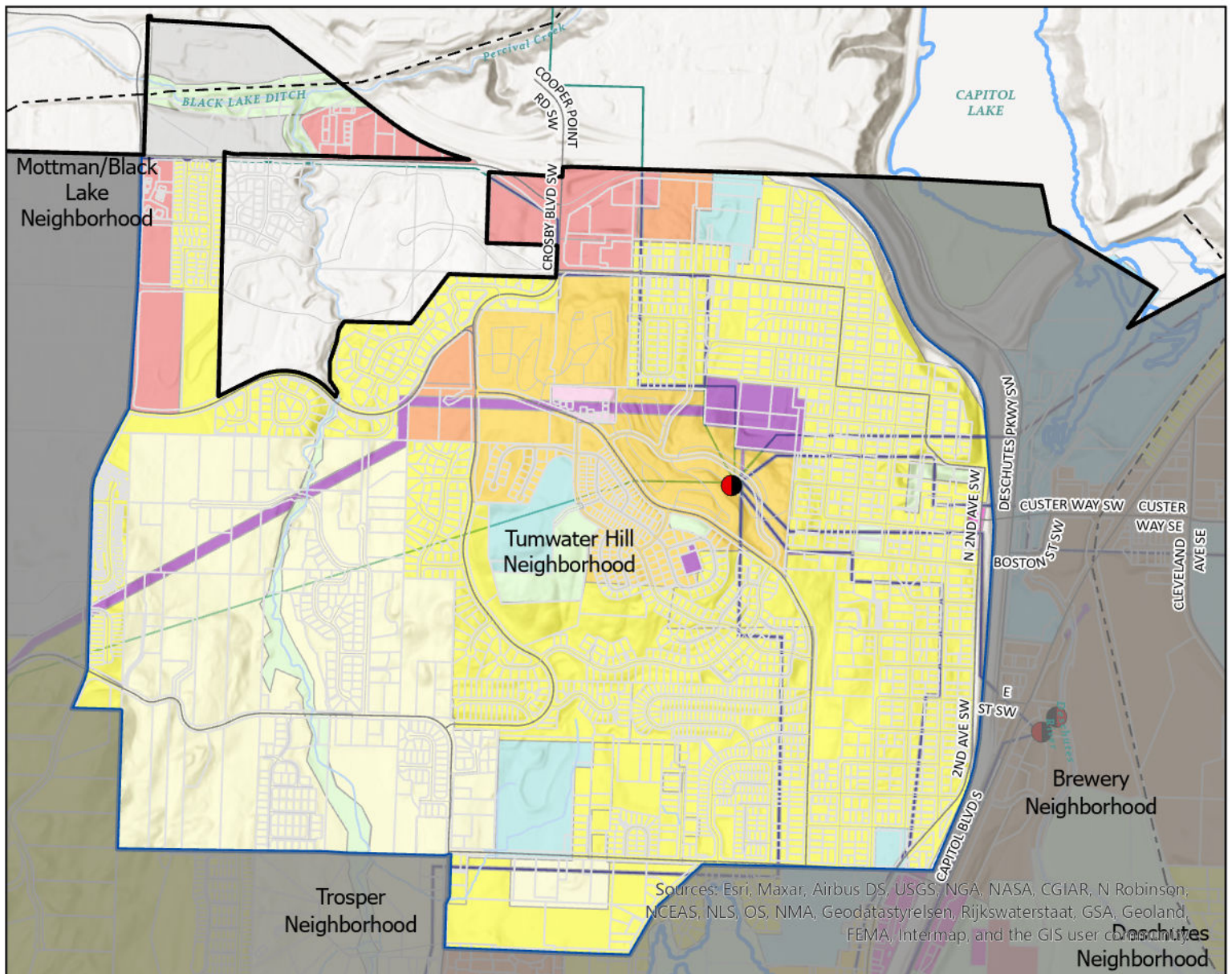
Trosper Future Land Use



- | | | | |
|--|--------------------------------|--|-------------------------|
| | Capitol Boulevard Community | | Mixed Use |
| | Manufactured Home Park | | Neighborhood Commercial |
| | Tumwater Town Center | | General Commercial |
| | Residential/Sensitive Resource | | Utilities |
| | Low Density Residential | | Heavy Industrial |
| | Medium Density Residential | | Light Industrial |
| | High Density Residential | | Tumwater UGA |
| | Parks/Open Space | | City Limits |
| | Public Institutional | | |

0 0.13 0.25 0.5 Miles

Map created by the City of Tumwater Transportation and Engineering Department using ArcGIS Pro 3.2.1. This map product is prepared by the City of Tumwater Transportation and Engineering Department for and intended for internal department use. The City of Tumwater or agents thereof make no warranties, either expressed or implied in matters of a public or private access or in matters that can be confirmed by an official survey by a professional land surveyor or in the merchantability or fitness of the data included herein for a particular purpose. The user agrees to indemnify and hold the City of Tumwater harmless from any and all damages, liability, cost or loss including reasonable attorneys' fees and costs of defense that the City of Tumwater may suffer as a result of any claims, demands, costs, or judgements arising from any use of this product and any errors or omissions.



Tumwater Hill Future Land Use



- | | | | |
|--|--------------------------------|--|-------------------------|
| | Brewery District | | Public Institutional |
| | Manufactured Home Park | | Mixed Use |
| | New Market Historic District | | Neighborhood Commercial |
| | Residential/Sensitive Resource | | General Commercial |
| | Low Density Residential | | Utilities |
| | Medium Density Residential | | Light Industrial |
| | High Density Residential | | City Limits |
| | Parks/Open Space | | |

0 0.1 0.2 0.4 Miles

Map created by the City of Tumwater Transportation and Engineering Department using ArcGIS Pro 3.2.1. This map product is prepared by the City of Tumwater Transportation and Engineering Department for and intended for internal department use. The City of Tumwater or agents thereof make no warranties, either expressed or implied in matters of a public or private access or in matters that can be confirmed by an official survey by a professional land surveyor or in the merchantability or fitness of the data included herein for a particular purpose. The user agrees to indemnify and hold the City of Tumwater harmless from any and all damages, liability, cost or loss including reasonable attorneys' fees and costs of defense that the City of Tumwater may suffer as a result of any claims, demands, costs, or judgements arising from any use of this product and any errors or omissions.