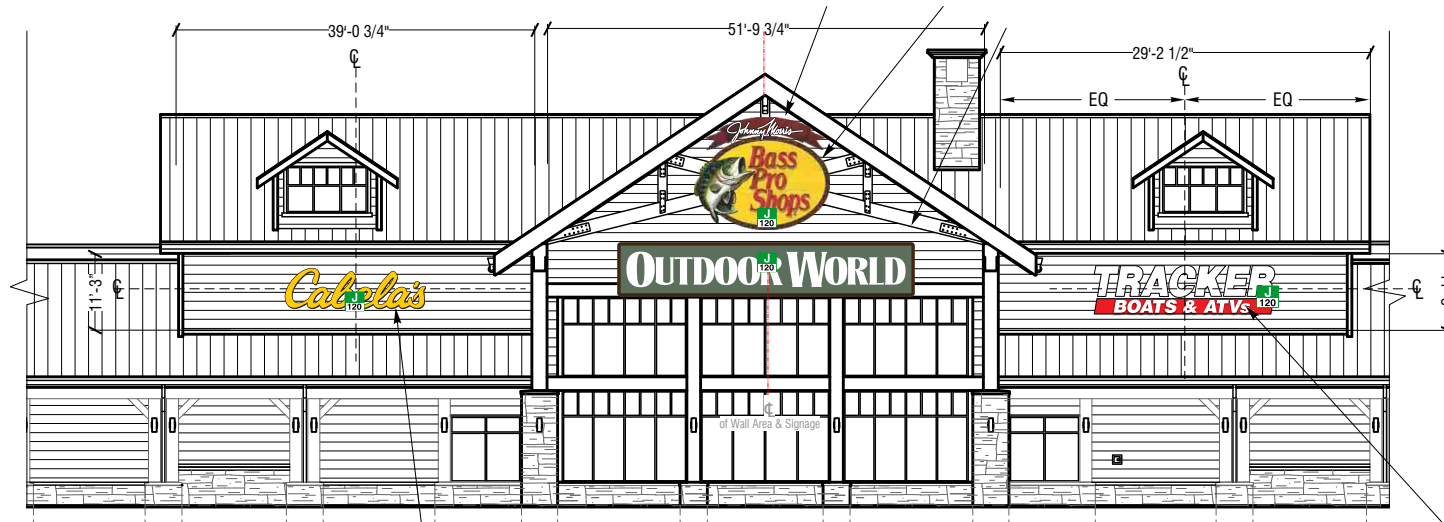


# (Proposed Signs vs Proposed Signs with code restrictions Elevation Drawings)

## Exhibit B

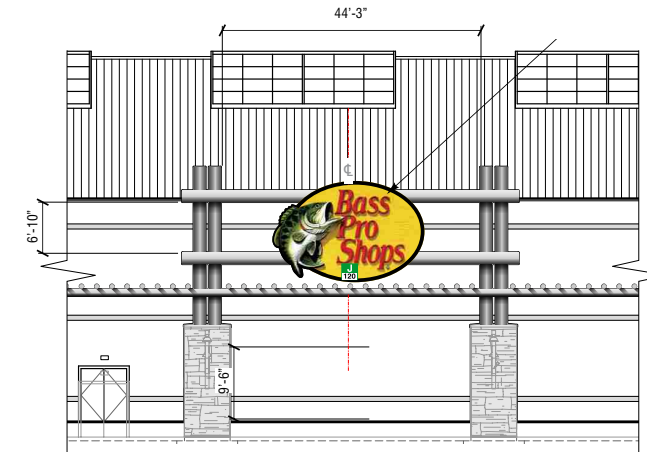
### Sign Placement Details



1 Partial Building Front Elevation - South (@ Entrance)  
Scale: 1/16" = 1'-0"

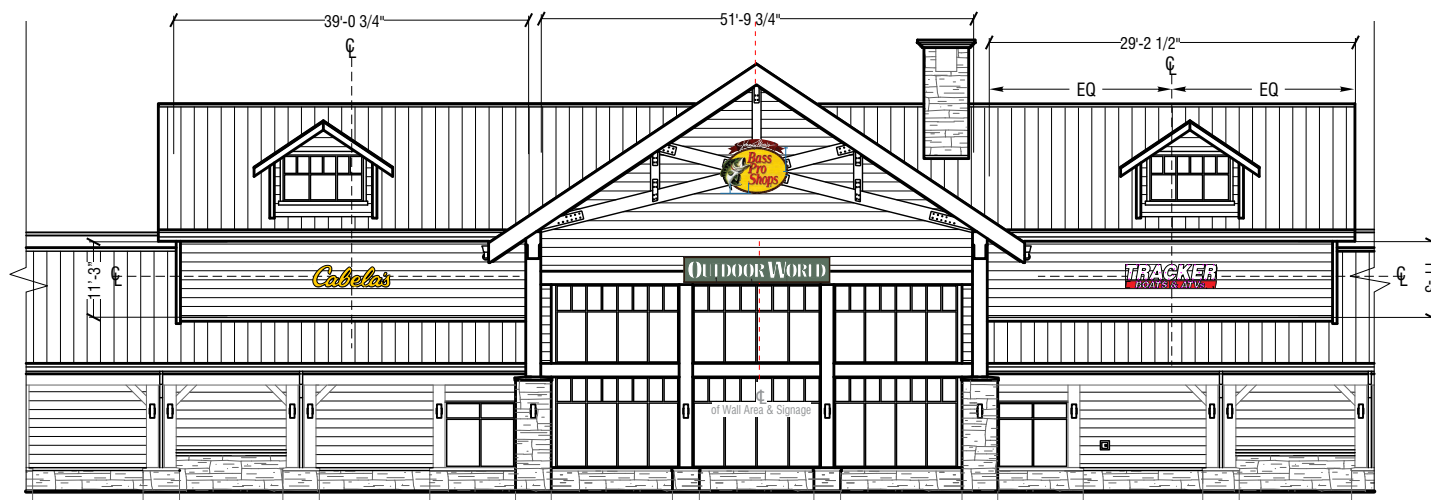
(15,031 SF Wall/ 601.9 SF of Signage)

Option 1 Proposed Signage



2 Partial Building Rear Elevation - West  
Scale: 1/16" = 1'-0"

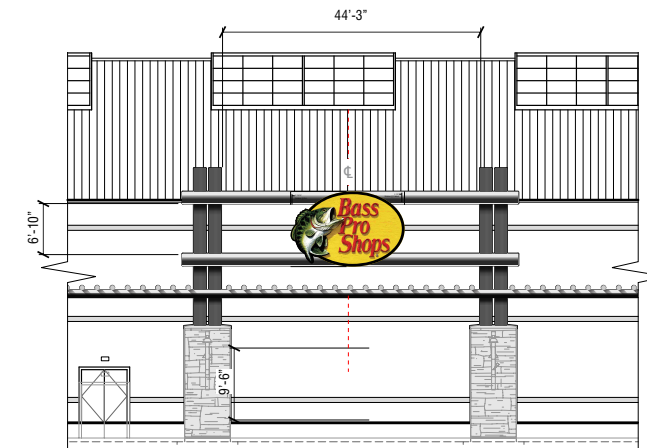
(8160 SF Wall/ 266.6 SF of Signage)



1 Partial Building Front Elevation - South (@ Entrance)  
Scale: 1/16" = 1'-0"

(15,031 SF Wall/ 150 SF of Signage)

Option 2 Proposed signage w/ code Restrictions  
(All signs are at 25% of Proposed size)



2 Partial Building Rear Elevation - West  
Scale: 1/16" = 1'-0"

(8160 SF Wall/ 150 SF of Signage)

	sales@meyersignco.com www.meyersignco.com phone: 503 620-8200 fax: 503 620-7074	PROJECT: Bass Pro Shops/Cabela's ADDRESS: 7555 SW Nyberg St. PHONE: Tualatin, OR 97062 DESIGNER: TLM	ACCT. MGR: SHOP MGR: SCALE: DATE:	FILE INFO: DRAWING: SHEET ____ OF ____	REVISIONS: DATE: BY: 1- 0 0 2- 0 0 3- 0 0 4- 0 0 5- 0 0 6- 0 0	CUSTOMER APPROVAL: INITIALS _____ DATE _____ LANDLORD APPROVAL: INITIALS _____ DATE _____	This is an original unpublished drawing created for Meyer Sign Company's customer and the project planned for the specific needs of Meyer Sign Customers. These drawings are not to be shown outside your organization nor used, copied, reproduced, or exhibited in any way unless authorized in writing by an officer of Meyer Sign Company of Oregon.	Attention: Colors shown on this artwork are for representational purposes only. An inkjet printer, printing on copier or computer monitor display cannot exactly duplicate the true color of the materials used in the actual sign making process.



Bass Pro Shops/Tualatin Location

Exhibit C

Photo Taken From 300' Away. Arterials at Tualatin location are Approx 530' Away



Bass Pro Shops/ Tualatin Location

Exhibit F

Photo Taken From 530' Away