



# PARKS ASSET COSTS

# CONDITION OF PARK SYSTEM



**1**

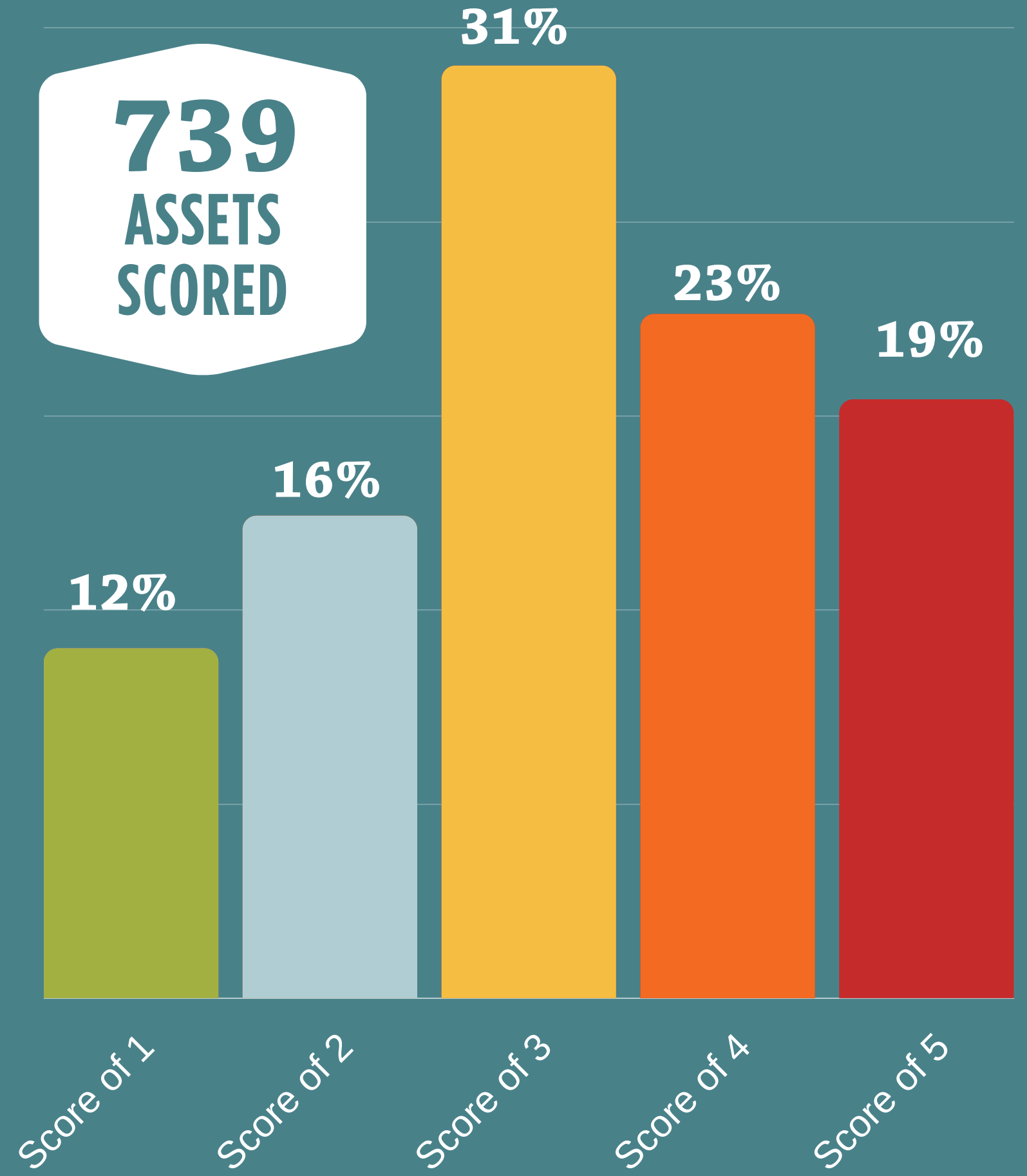
**BRAND NEW  
PERFECT CONDITION  
FULLY ACCESSIBLE**



**5**

**END OF LIFE CYCLE  
SAFETY HAZARD  
NON ACCESSIBLE**

**739  
ASSETS  
SCORED**



# INCLUDED IN COST ESTIMATES

- Renovation & replacements
- Existing park facilities & assets (outdoors)
- Recreation building repairs & improvements (ADA in public areas only)
- Americans with Disabilities Act improvements (conjunction with park projects)



## NOT INCLUDED IN COST ESTIMATES

- Building renovation (structure & interior), replacement or improvements
- Standard maintenance costs (staff, supplies, services)
- Natural resources restoration (natural areas & greenways)
- Natural resources maintenance
- Americans with Disabilities Act improvements
- Project design & engineering
- Utility infrastructure renovation & replacements
- City, county, state, federal, & environmental permits
- Expansion or additional park & facilities
- Property acquisition

5

EXAMPLES



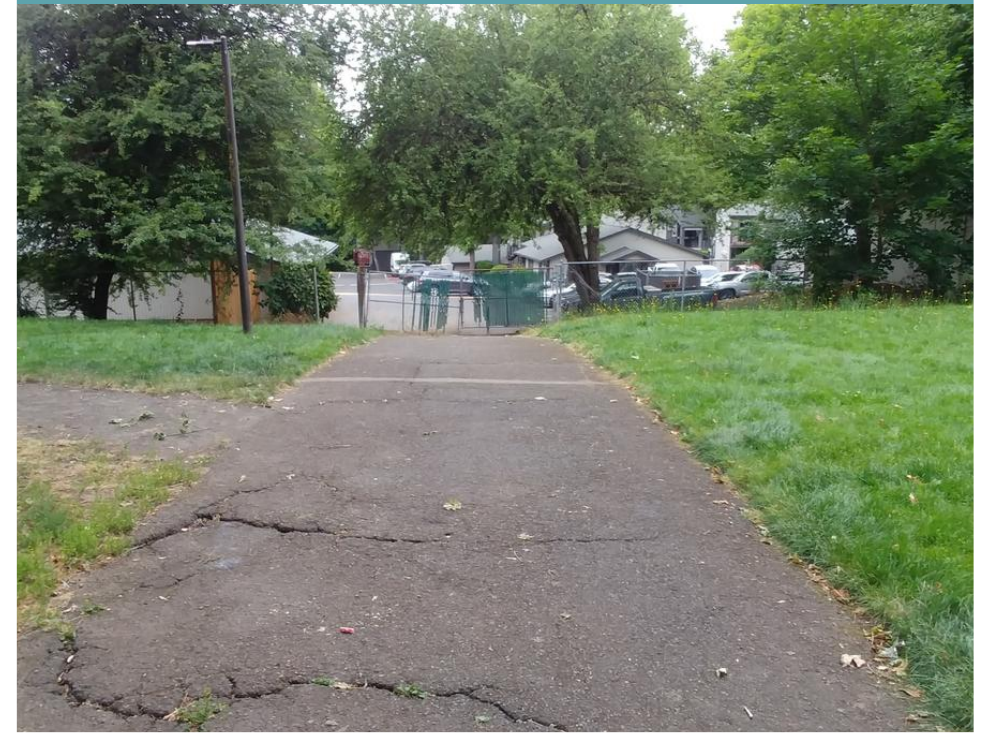
TUALATIN COMMUNITY  
PARK BOAT RAMP



TUALATIN COMMONS  
PATH SURFACE



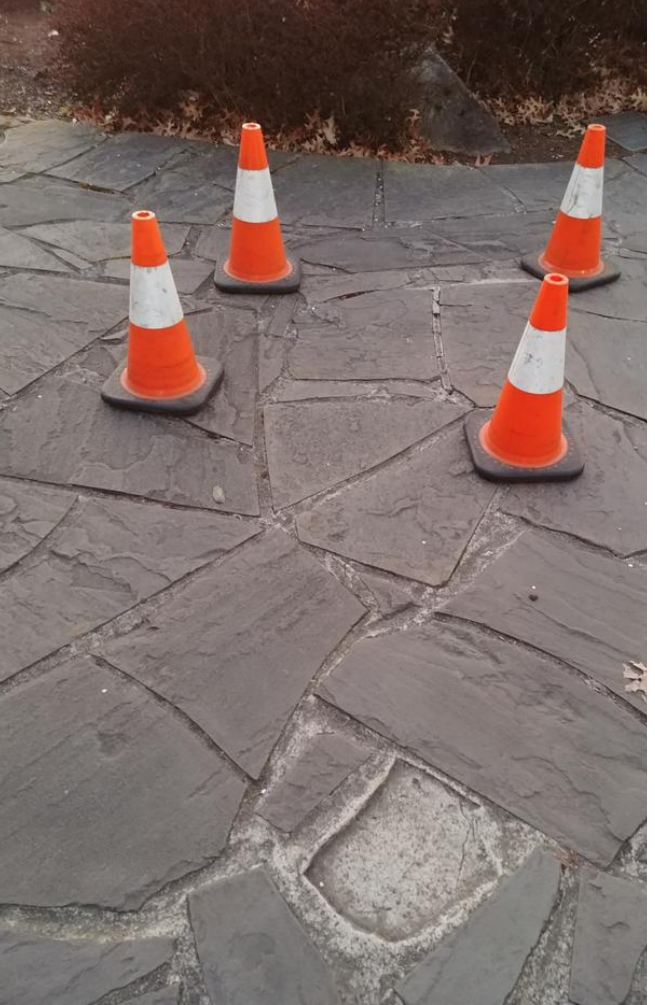
STONERIDGE PARK



TOTAL  
COST FOR

5

\$7,485,860



4

EXAMPLES



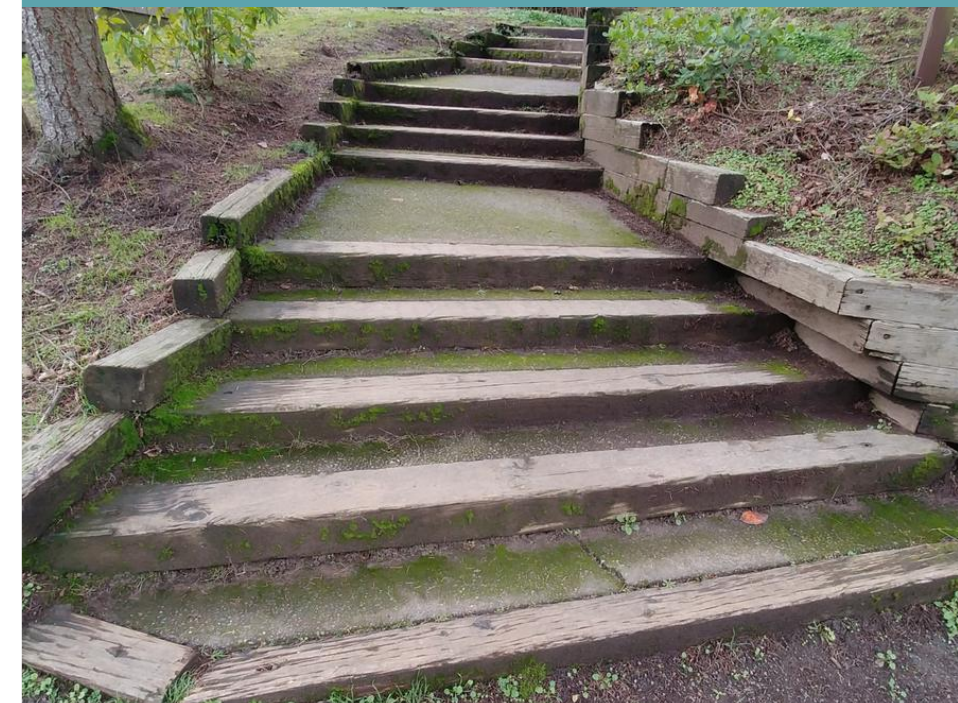
LOWER TURF  
ATFALATI PARK



CHIEFTAIN DAKOTA  
PATH SURFACE



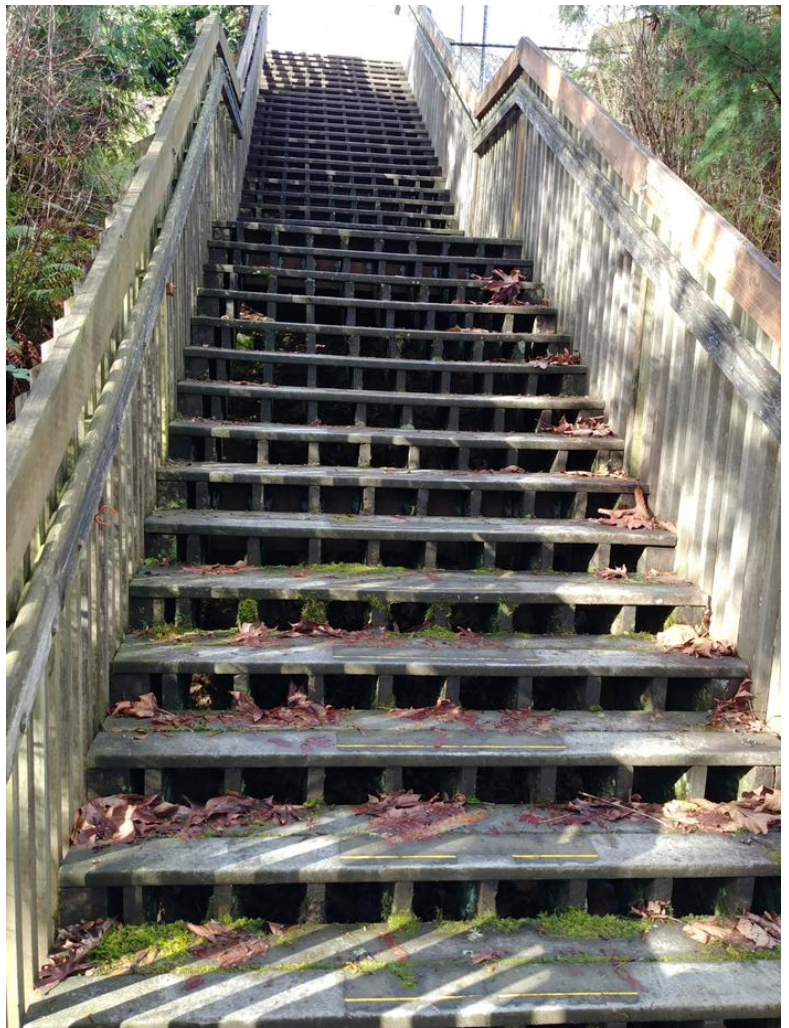
LITTLE WOODROSE PARK  
STAIRS



TOTAL  
COST FOR



\$4,077,165

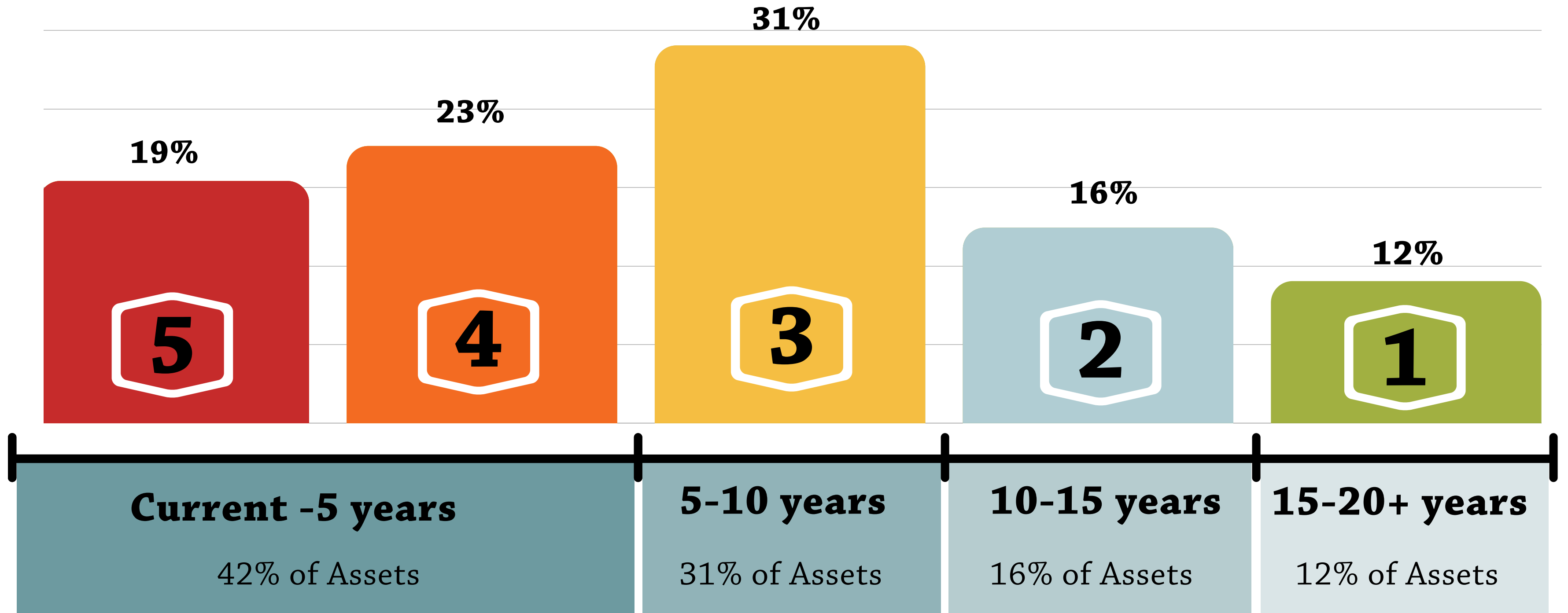




TOTAL COST FOR  4 &  5

**\$11,563,025**

# PLAN TIMELINE



# NEXT STEPS

COMPARABLES

FUNDING OPTIONS

NATIONAL COMMUNITY SURVEY RESULTS