

# City of Tualatin

## 2022 Annual Report



Republic Services of Clackamas and Washington Counties



Material Hauled	3
Material Destinations	8
Financials	9
Customer Counts	11
Customer Service Summary	12
Recycling Depot	13
Community Outreach	14
Recycling Simplified	17



Sustainability in Action



# Residential Material Hauled

January through December 2022

Material	Destination	Q1	Q2	Q3	Q4	2022
Commingle	Pioneer Recycling	-	1.3	-	-	1.3
	Pride Disposal	-	1.1	-	-	1.1
	WRI	369.4	356.8	360.6	381.5	1,468.4
Glass	WRI	63.5	65.2	60.7	64.4	253.8
Garbage	Metro South	5.0	12.2	-	-	17.2
	Pride Disposal	-	4.2	-	-	4.2
	WRI	1,105.8	1,131.3	1,157.7	1,125.9	4,520.6
Yard Debris	WRI	516.1	1,065.4	635.2	851.1	3,067.8
Totals:		2,059.8	2,637.5	2,214.3	2,422.9	9,334.5

**Page Note:** All material is reported out in tons.

## Residential Container Placement Reminder



Proper placement improves operational efficiencies and decreases service hazards.



# Commercial Material Hauled

January through December 2022

Material	Destination	Q1	Q2	Q3	Q4	2022
Cardboard	WRI	800.2	786.1	737.1	761.4	3,084.8
Commingle	Pioneer	-	12.3	-	-	12.3
	WRI	67.6	63.4	40.9	41.1	212.9
Glass	WRI	26.1	27.3	25.1	29.3	107.8
Metal	WRI	0.1	-	0.0	0.2	0.3
Garbage	Metro South	-	5.0	-	-	5.0
	Pride Disposal	-	9.7	4.9	15.1	29.7
	WRI	2,177.2	2,263.8	2,124.1	2,167.1	8,732.2
Organics	WRI	-	-	3.0	-	3.0
Totals:		3,071.1	3,167.6	2,935.1	3,014.2	12,187.9

Page Note: All material is reported out in tons.





# Drop Box & Compactor Material Hauled

January through December 2022

Material	Destination	Q1	Q2	Q3	Q4	2022
Cardboard	WRI	257.3	191.7	214.6	219.5	883.2
Commingle	WRI	24.5	48.1	21.9	15.6	110.1
Concrete	S&H Logging	180.5	156.0	82.8	80.0	499.3
	Brian Clopton	22.5	7.5	27.8	42.0	99.8
Dirt and Stone	S&H Logging	-	5.3	36.8	-	42.0
Dry Waste	Pride Disposal	53.5	34.2	91.9	8.8	188.3
	WRI	3,241.4	3,473.1	3,297.4	3,041.2	13,053.1
Garbage	Coffin Butte	15.7	45.8	27.3	32.9	121.6
	Marion County Burner	7.9	10.6	7.9	8.7	35.1
	Metro South	29.4	22.8	29.3	32.2	113.8
	Pride Disposal	6.1	3.5	10.5	18.2	38.2
	WRI	1,245.8	1,114.0	1,086.4	1,082.3	4,528.5
Glass	Glass to Glass	24.1	41.4	47.8	26.2	139.6
	WRI	300.6	312.4	345.6	282.5	1,241.0
Manure	Lees Farm	-	-	-	15.0	15.0
Metal	WRI	17.5	23.5	19.0	4.4	64.3
Organics	WRI	34.5	40.3	32.8	39.8	147.4
Plastics	NW Polymers Plastic	140.3	158.7	158.7	131.5	589.3
Wood	Pride Disposal	1.5	-	6.9	-	8.4
	S&H Logging	20.0	11.0	-	-	31.0
	WRI	104.7	80.3	73.9	121.6	380.5
Yard Debris	S&H Logging	13.1	22.4	26.9	15.0	77.4
	WRI	0.3	-	2.8	-	3.1
Totals:		5,741.3	5,802.4	5,648.8	5,217.3	22,409.8

Page Note: All material is reported out in tons.



## Residential Material Hauled

Year Over Year

Material	2020	2021	2022
Commingle	1,831.1	1,563.4	1,470.8
Garbage	5,577.9	4,891.08	4,541.9
Glass	322.0	261.33	253.8
Yard Debris	3,574.5	2,779.26	3,067.9

## Commercial Material Hauled

Year Over Year

Material	2020	2021	2022
Cardboard	2,382.1	3,336.0	3,084.8
Commingle	236.4	299.9	225.20
Garbage	7,321.5	9,946.86	8,766.8
Glass	73.8	102.5	107.8
Metal	1.5	0.78	0.3
Organics	-	0.2	3.0

Page Note: All material is reported out in tons.



## Drop Box & Compactor Material Hauled

Year Over Year

Material	2020	2021	2022
Cardboard	798.9	1,079.0	883.2
Commingle	460.2	175.7	110.1
Concrete	658.1	343.3	599.0
Dirt and Stone	461.2	523.5	42.0
Glass	639.0	1,241.4	1,380.6
Garbage	6,243.0	6,048.8	4,837.2
Metal	61.7	62.3	64.3
Plastics	-	500.3	589.3
Organics	-	147.2	147.4
Wood	1,180.0	728.6	419.9
Yard Debris	79.0	125.2	80.4

Page Note: All material is reported out in tons.





# Material Destinations

Name	Location	Total Tons
Brian Clopton Excavating	Sherwood, OR 97140	99.8
Coffin Butte	Corvallis, Oregon 97330	121.6
Glass to Glass	Portland, OR 97217	139.6
Lee's Nursery	Tualatin, Oregon 97062	15.0
Marion County Burner, Covanta	Salem, Oregon 97305	35.1
Metro South	Oregon City, OR 97045	135.9
NW Polymer	Mollala, Oregon 97038	589.3
Pioneer Recycling Services	Clackamas, Oregon 97015	13.6
Pride Disposal	Sherwood, Oregon 97140	269.9
S&H Recycling	Tualatin, Oregon 97062	649.6
Willamette Resources Inc. (WRI)	Wilsonville, Oregon 97070	41,862.9

Page Note: All material is reported out in tons.

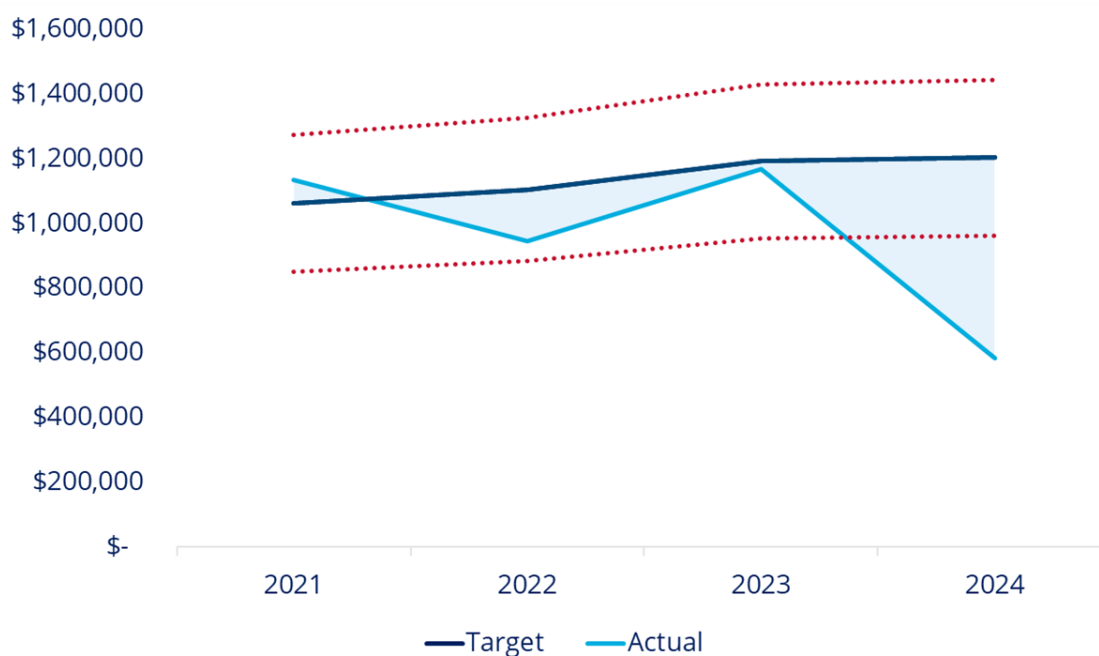


# Statement of Income

For Year Ending December 31, 2022

4 Year Financials	Actuals			Forecasted			
	2021	2022	% Δ	2023	% Δ	2024	% Δ
Revenue	\$10,634,491	\$11,060,008	4.0%	\$11,930,431	7.9%	\$12,049,735	1.0%
Franchise Fees	\$273,460	\$305,768	11.8%	\$357,913	17.1%	\$361,492	1.0%
Cost of Operations	\$8,385,464	\$8,969,550	7.0%	\$9,602,397	7.1%	\$10,305,413	7.3%
Gross Profit	\$1,975,567	\$1,784,690	-9.7%	\$1,970,121	10.4%	\$1,382,830	-29.8%
Sales, General and Administrative	\$838,975	\$790,508	-5.8%	\$808,195	2.2%	\$826,292	2.2%
Operating Income	\$1,136,592	\$994,182	-12.5%	\$1,161,925	16.9%	\$556,537	-52.1%
Income Taxes	\$331,544	\$371,029	11.9%	\$433,631	16.9%	\$207,700	-52.1%
Net Income	\$805,048	\$623,153	-22.6%	\$728,295	16.9%	\$348,838	-52.1%

Return Compared to Acceptable Range (8% - 12%)



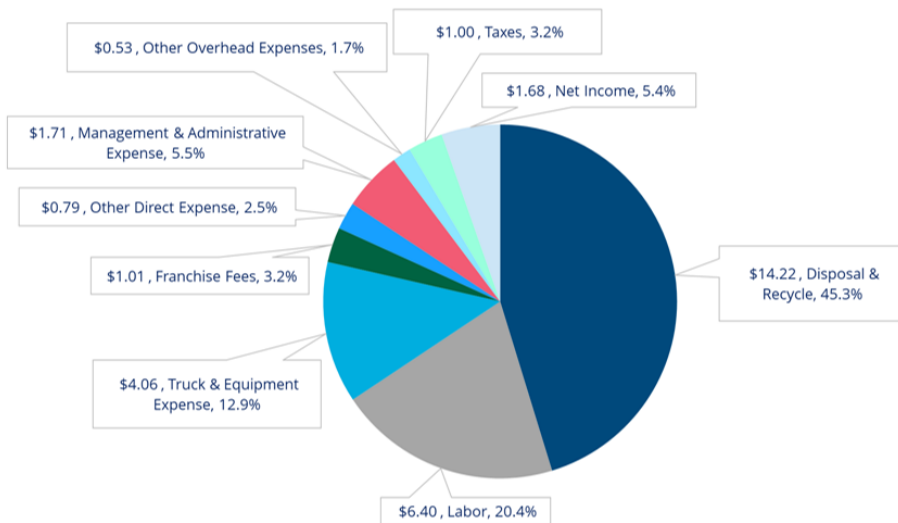
# Schedule of Expenses

For Year Ending December 31, 2022

4Y Financial	Actuals			Forecasted			
	2021	2022	% Δ	2023	% Δ	2024	% Δ
<b>Pass Through Expenses</b>							
Franchise Fees	\$273,460	\$305,768	11.8%	\$357,913	17.1%	\$361,492	1.0%
Franchise Fees	\$273,460	\$305,768	11.8%	\$357,913	17.1%	\$361,492	1.0%
<b>Cost of Operations</b>							
Disposal & Recycle	\$4,469,571	\$5,005,610	12.0%	\$5,441,098	8.7%	\$5,963,443	9.6%
Labor	\$2,309,687	\$2,254,944	-2.4%	\$2,405,605	6.7%	\$2,515,215	4.6%
Truck & Equipment Expense	\$1,235,323	\$1,431,301	15.9%	\$1,472,445	2.9%	\$1,535,008	4.2%
Other Direct Expense	\$370,883	\$277,696	-25.1%	\$283,250	2.0%	\$291,747	3.0%
Cost of Operations	\$8,385,464	\$8,969,550	7.0%	\$9,602,397	7.1%	\$10,305,413	7.3%
<b>Sales, General and Administrative</b>							
Management & Administrative Expense	\$632,938	\$602,825	-4.8%	\$614,882	2.0%	\$627,180	2.0%
Other Overhead Expenses	\$206,037	\$187,683	-8.9%	\$193,313	3.0%	\$199,113	3.0%
Sales, General, and Administrative	\$838,975	\$790,508	-5.8%	\$808,195	2.2%	\$826,292	2.2%

## Where does my monthly payment go towards?

(Based on 2022 figures for a 35 Gallon customer's monthly rate: \$31.41)



35 Gallon



# Customer Counts

## Customer Counts Residential

20G Can	533
35G Cart	3,103
65G Cart	2,360



## Container Counts Multifamily

35G Cart	280
65G Cart	146
95G Cart	5
Front Load Container Customers	20

## Container Counts Commercial

35G Cart	68
65G Cart	36
95G Cart	119
Front Load Container Customers	583



## Drop Box & Compactor Hauls

10-19 Yard	212
20-29 Yard	2,721
30 Yard	3,039
40-48 Yard	2,150



## Tualatin Customer Service

"Your customer services representative was awesome and I just wanted to say thank you!" -**Lillian**

"Lula was very helpful, she went above and beyond. Very impressed by the service I received!" -**Candice**

"Thoroughness!! Dawn was very helpful, super nice and made me laugh. Her service made my day better." -**Barry**

"Your driver noticed my cat in the street and turned off the truck engine while I gathered my spooked cat. Very thankful for the level of safety!" -**Linda**

"Driver showed so much respect to my neighbor and their dog. Wanted to say thank you for doing a great job!" -**Mike**

### Customer Service Summary












29 customer complaints in 2022; all were resolved within 24hours



5 customer compliments (listed above)

## Recycling Depot

Tualatin Residents can drop-off the following materials, without charge, at our Ridder Road Recycling Depot.

-  Cardboard
-  Electronic Waste (e-Waste)
-  Glass Bottles
-  Metal
-  Metal Cans
-  Paper
-  Plastic Jugs
-  Plastic Tubs
-  Polystyrene\*



**REPUBLIC<sup>®</sup>**  
**SERVICES**

Sustainability in Action

\*Polystyrene (#6 plastics) was added in 2020.





## Tualatin High School Career Fair

In Partnership with the Tualatin Chamber of Commerce



## Tualatin Bulky Waste Day





## Stoneridge Bulky Waste Day



## Tualatin Tour of Coffin Butte Landfill





## Tualatin Rid Patrol May 2023



## Toys for Tots Bulky Waste Day





# Recycling *Simplified*

Republic Services collaborated with professional educators to develop a free Pre-K through High School academic resource for educators. This project turned into *Recycling Simplified* (<https://recyclingsimplified.com/for-educators>). Available resources include lesson prep for teachers, grade level presentations and lesson plans, children's stories, activity worksheets, student certificates, and take home materials for parents. Visual examples below and on pages 18-20. All of this is provided to all Tualatin Schools **free** of charge.

## Accessible Value



Engaging activities for learning at home



Developed by teachers, vetted by parents



Empowers entire family to make a difference by recycling



Flexible and easy - complete any time, in any order



Easily access on any device



Printer optional



# Aluminum Cans are Efficient Recyclables!

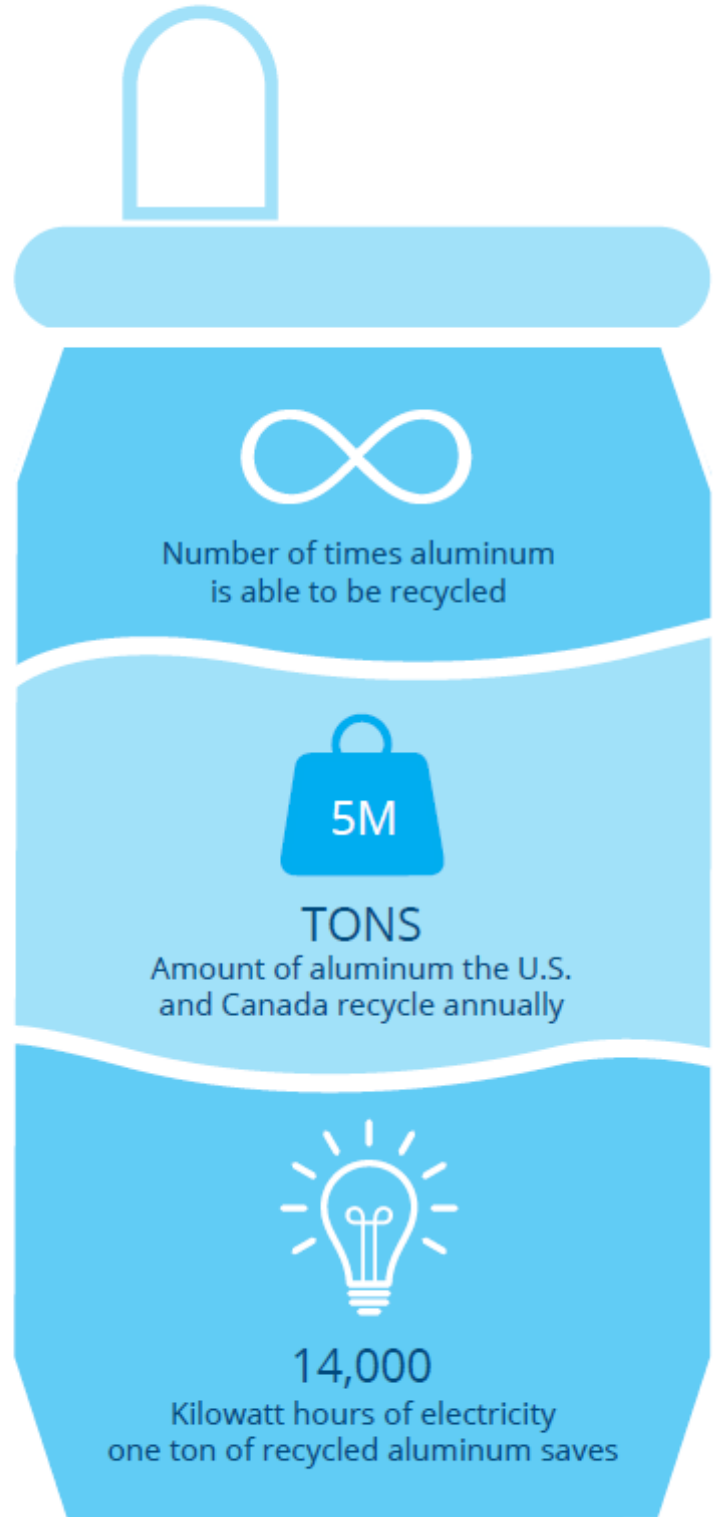
Visit [RecyclingSimplified.com](https://www.RecyclingSimplified.com) to learn more.

Sources:

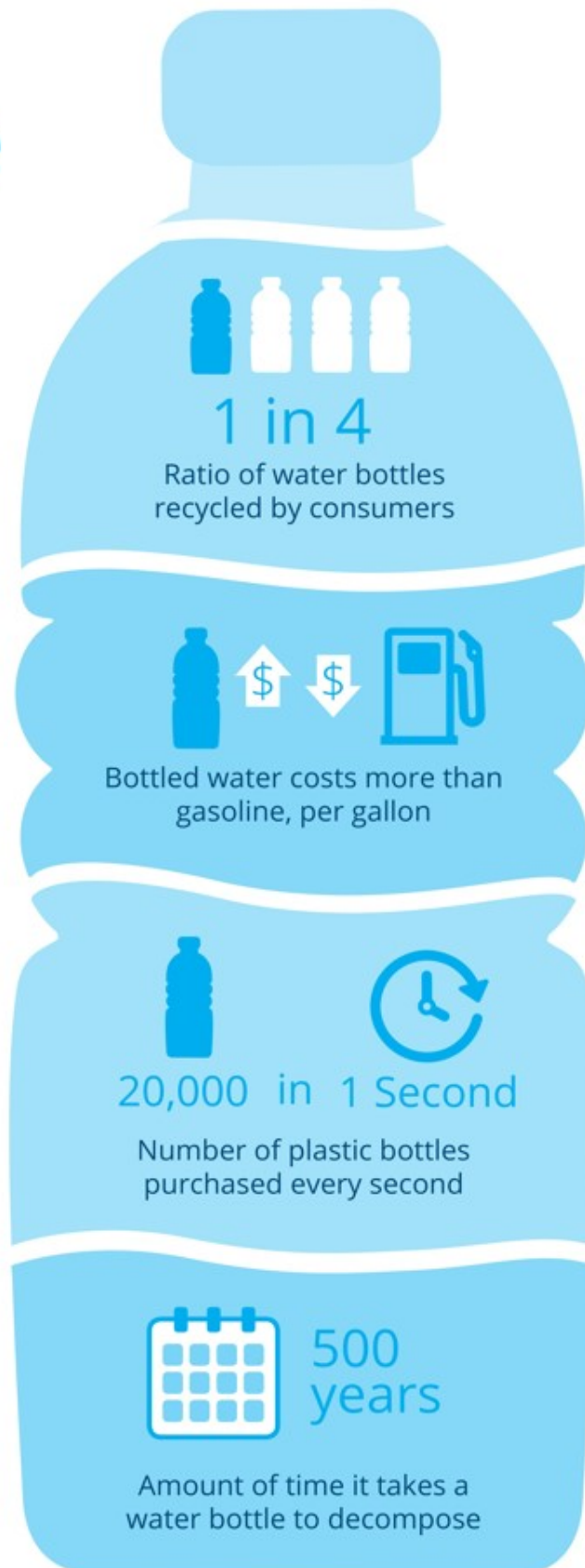
<https://www.aluminum.org/sustainability/aluminum-recycling>

<https://utahrecycles.org/get-the-facts/the-facts-aluminum/>

Recycling *Simplified*



# The Not-So-Pure Reality of Disposable Water Bottles



Sources:  
<https://www.earthday.org/2018/03/29/fact-sheet-single-use-plastics/>  
<https://www.businessinsider.com/bottled-water-costs-2000x-more-than-tap-2013-7>  
<https://www.rubiconglobal.com/blog-statistics-trash-recycling/>

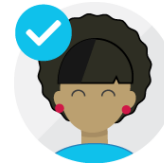




Carefully aligned to grade-level curriculum standards



Provided to you 100% free of charge



Written and vetted by real teachers



Lessons designed to fit within a typical class period



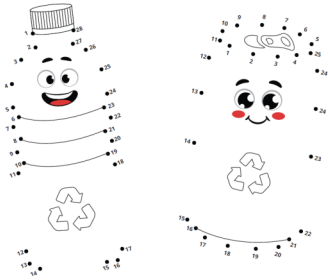
Lessons can be used individually or as a unit



Easy for teachers to implement, engaging for students

### Connect the dots to complete these recyclables!

Once you're finished, these can be tossed in the recycling bin. Make sure all recyclables are empty, clean and dry!

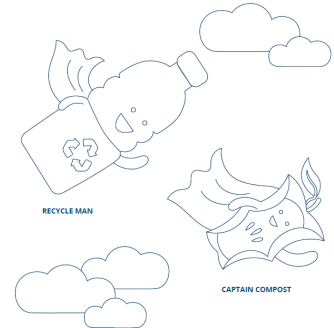


### Caring for the Earth Takes Owl of Us

Visit [RecyclingSimplified.com](https://www.RecyclingSimplified.com) for more fun Earth Day activities!



### Sustainability in Action!



Recycling *Simplified*

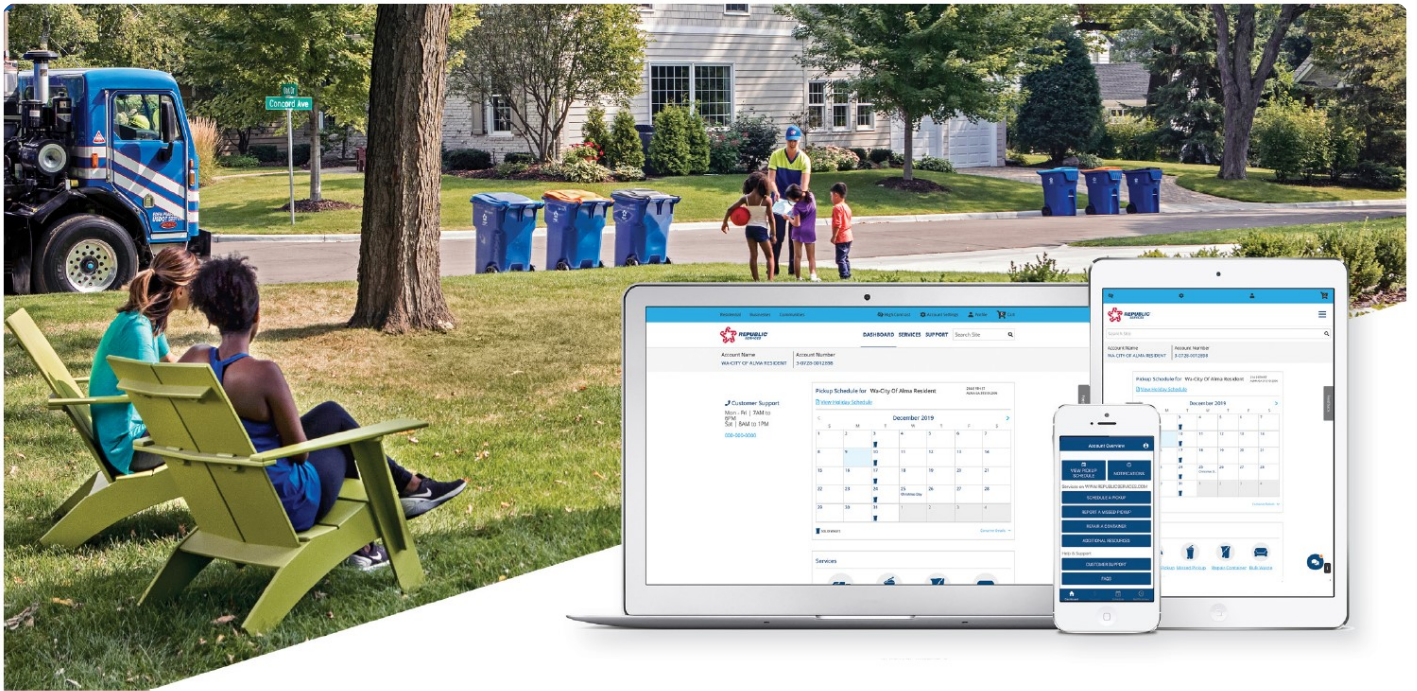


**REPUBLIC**  
SERVICES

Visit [RepublicServices.com/EarthDay](https://www.RepublicServices.com/EarthDay) to learn more.







## New! Manage your service from anywhere.

Now it's easier than ever to quickly request services and access resources you need in minutes.

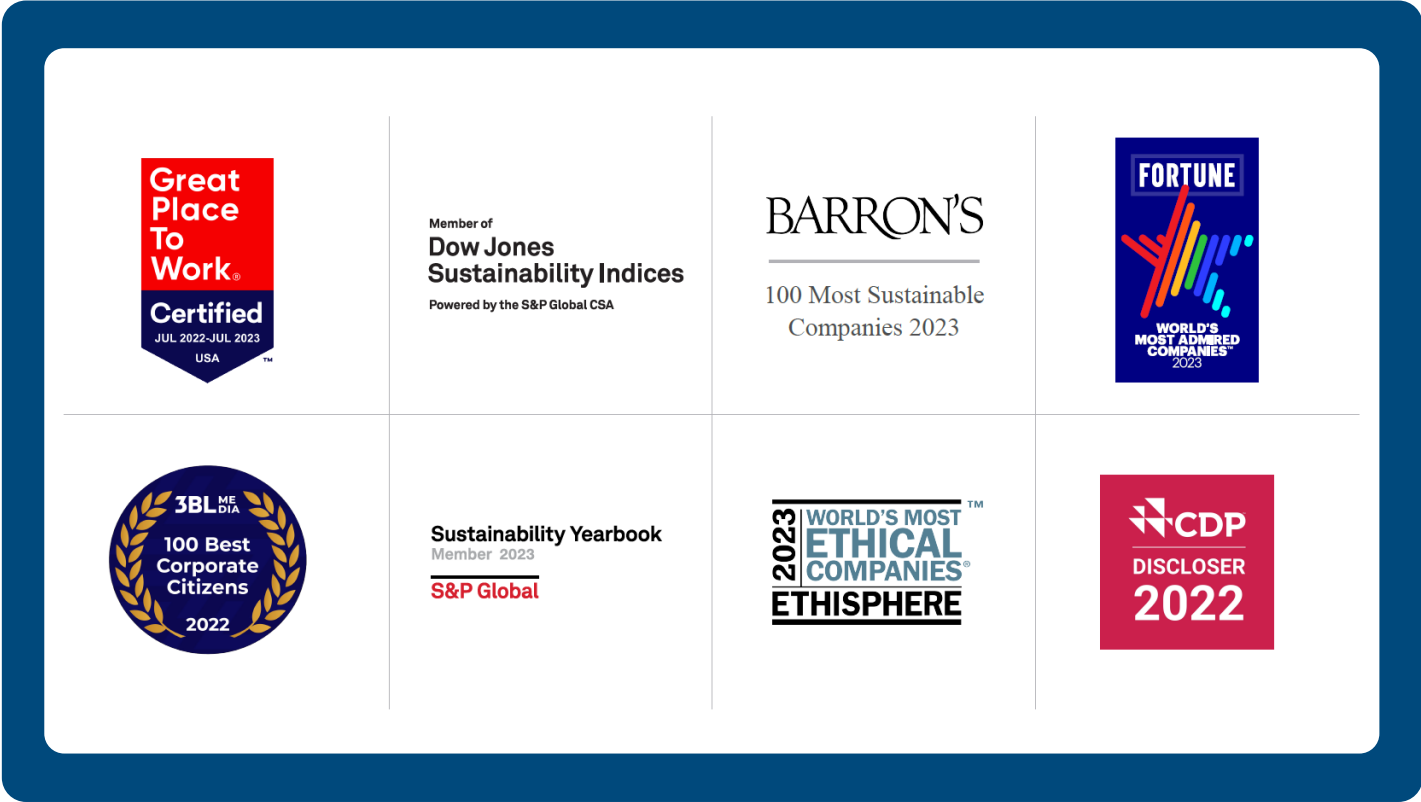
The Republic Services® app is a convenient way to:

- Manage your personal info and communication preferences.
- Get exclusive access to LiveChat agents for questions and help.
- Set reminders to never forget trash day again.
- Gain access to resources including recycling tips.
- Get updates on holidays schedules, tree removal, etc.

Download the app or visit [RepublicServices.com/Account](https://RepublicServices.com/Account) to create your online account.



Sustainability in Action



Republic Services of Clackamas and Washington Counties

Annual Report assembled by

Travis Comfort, Municipal Administrator

10295 SW Ridder Road  
Wilsonville, Oregon 97070



Sustainability in Action