

Exhibit A: Trail Concept

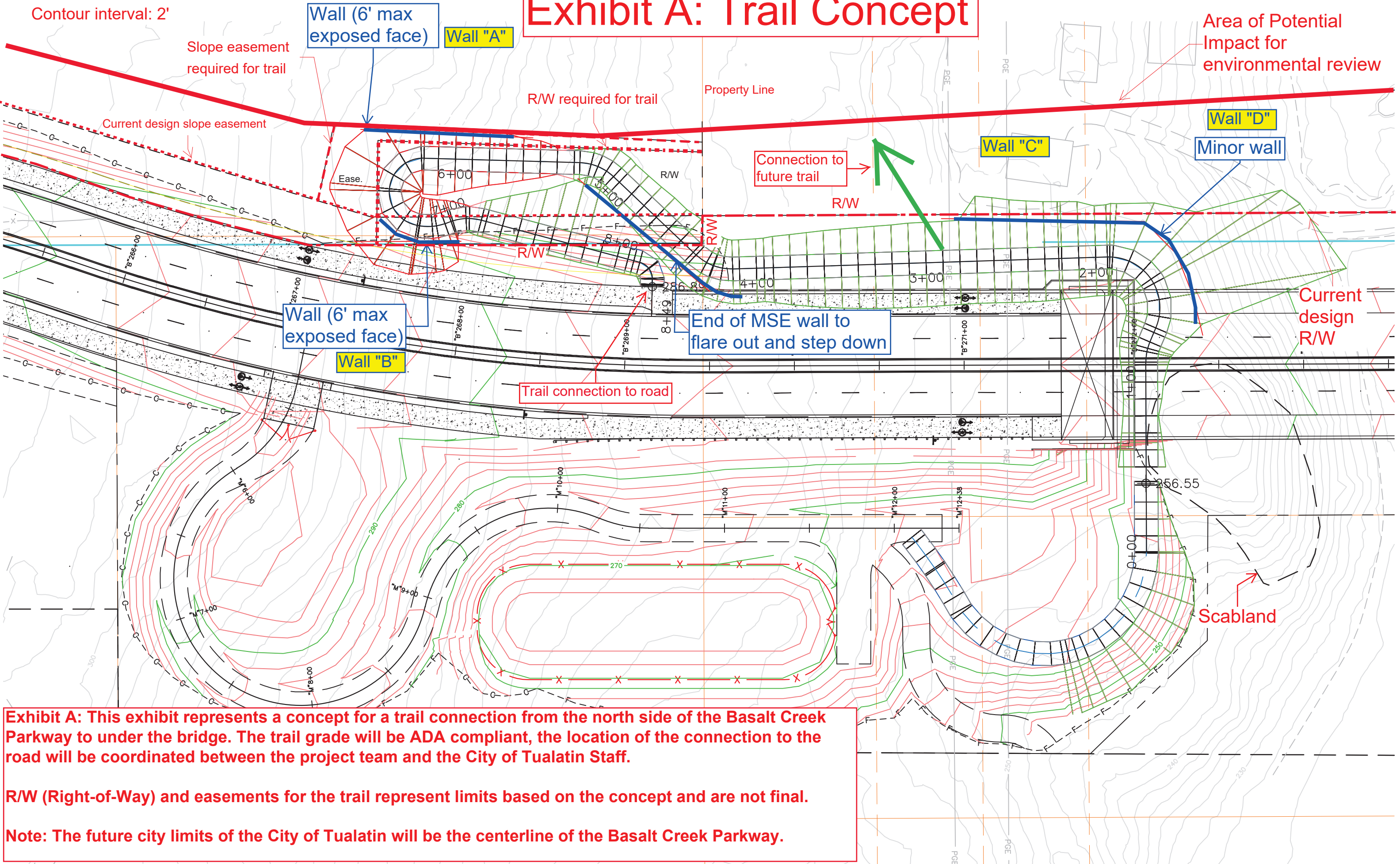


Exhibit A: This exhibit represents a concept for a trail connection from the north side of the Basalt Creek Parkway to under the bridge. The trail grade will be ADA compliant, the location of the connection to the road will be coordinated between the project team and the City of Tualatin Staff.

R/W (Right-of-Way) and easements for the trail represent limits based on the concept and are not final.

Note: The future city limits of the City of Tualatin will be the centerline of the Basalt Creek Parkway.