



Moving the Plan Forward: Developing the Work Plan

October 14, 2024

ReCAP

✓ Adopted by Council on May 28, 2024
Resolution #5775-24

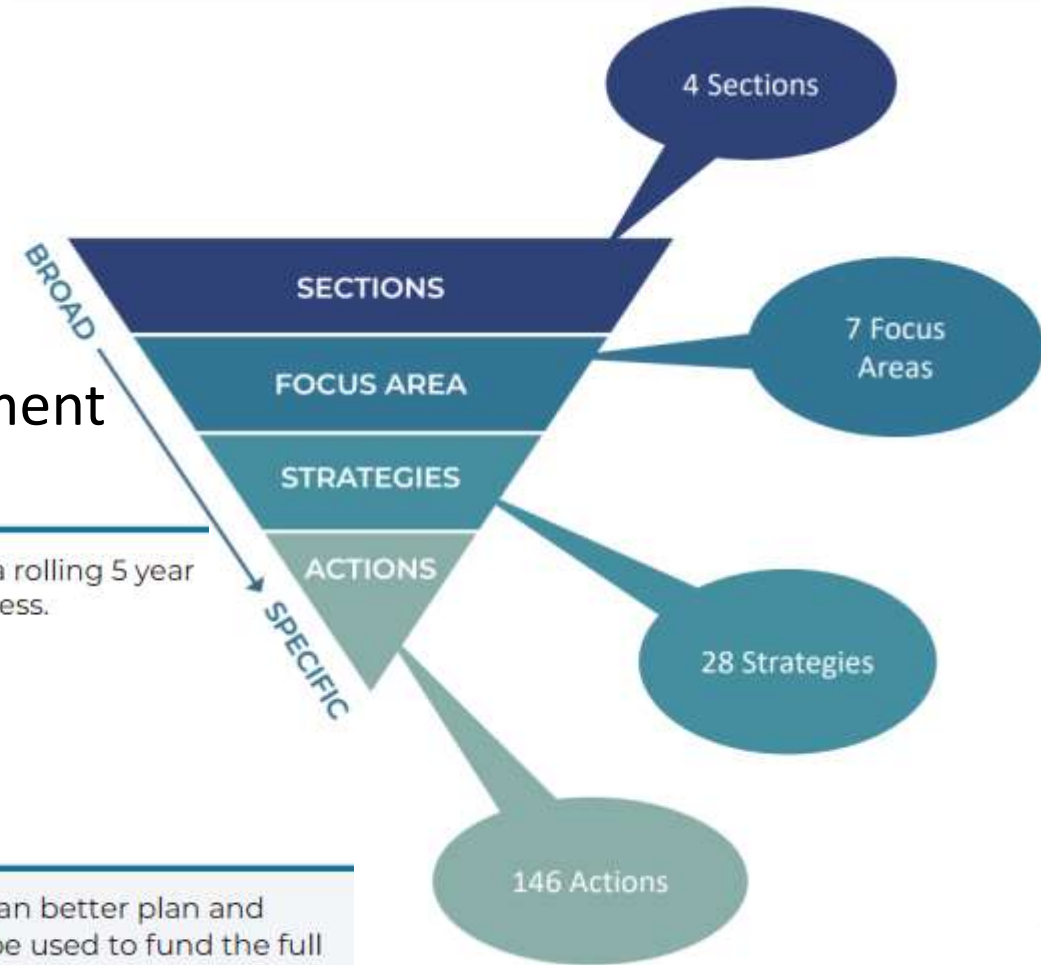
✓ Added \$125,000 to 24-25 budget as a placeholder for two actions:

1. Hire a firm to facilitate prioritization and development of a 5-year implementation plan (\$50,000)

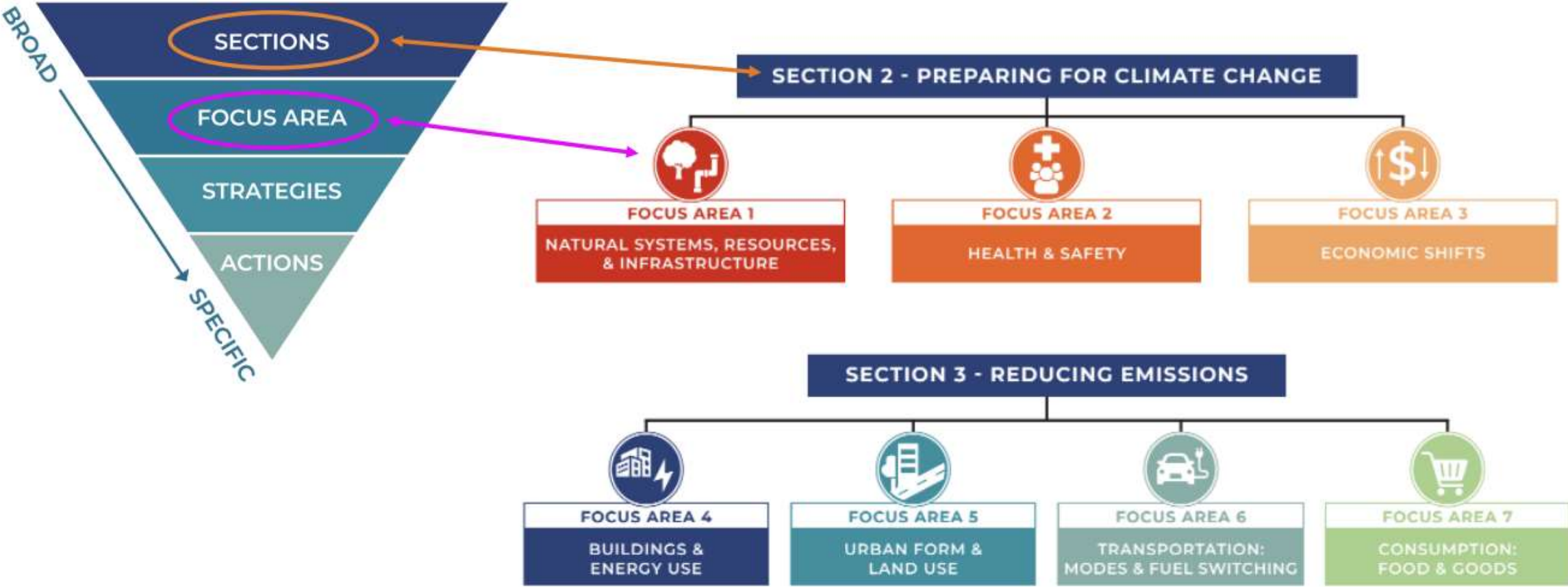
8.1.12 **Create a 5 year work plan.** The CAP includes a large number and variety of actions. Creating a rolling 5 year work plan will make the plan more manageable and help focus recourses and measure progress.

2. Hire a firm to analyze and provide options for a sustainable funding strategy (\$75,000)

8.1.11 **Identify an ongoing funding source.** By identifying a consistent funding source the City can better plan and carry out actions that have a monetary cost or rely on consultant support. This could also be used to fund the full time employee recommended in another implementation action.



More ReCAP



Moving the CAP Forward



- Convened interdepartmental work group:
 - Become familiar with the plan
 - Understand what actions are already in progress
 - Discuss what is realistic to take on until additional capacity can be added
- Mission:
 - Be opportunistic
 - Include high impact actions ★
 - Make meaningful progress towards goal
- Group recommendation:
 - Develop a shorter term, “kick-start” work plan (2-year)



High Impact Actions



Top 10 Priority Action List

Tualatin's top 3 emissions sources are:

- Building energy (42%)
- Goods production (15%)
- Transportation energy (12%)

Scaling results showed these strategies to have the highest emissions reduction potential:

- 4.2 - Transition to 100% carbon-free electricity supply (Buildings)
- 4.3 - Transition to 100% RNG and clean hydrogen supply (Buildings)
- 6.1 - Fuel switching – EVs, renewable diesel, biodiesel, ethanol, and other low-emissions fuels (Transportation)
- 4.1 - Energy efficiency and conservation (Buildings)
- 4.5 - Electrification of space and water heating for existing buildings (Buildings)

Emissions reduction strategies for upstream goods production were not scaled in the analysis. However, as Tualatin's 2nd largest emissions source, this list includes 1 priority action focused on reducing emissions from goods consumption based on the emissions reduction hierarchy.

July 2024

December 2024

July 2025

December 2025

July 2026

8.1.11 Identify an ongoing funding source. By identifying a consistent funding source the City can better plan and carry out actions that have a monetary cost or rely on consultant support. This could also be used to fund the full time employee recommended in another implementation action.

1. SUSTAINABLE FUNDING: Conduct an analysis of options for sustainable funding for the climate action program with the outcome of funding for a staff resource/position to oversee and manage the program, and funding for the general program (*Fall 2024*)

2. SUSTAINABLE FUNDING: Following up on the analysis and presentation of options, implement a sustainable funding source for the climate action program including hiring a staff resource/position to oversee and manage the program (*Summer 2025*)

CFI Grant - \$15 million



6.1.2 Promote programs to help fund installation of EV chargers at new and existing affordable housing and multifamily complexes. Prioritize multifamily housing and workplaces.

STAKEHOLDERS

- City of Tualatin Finance Department and City Manager's Office
- Portland General Electric (PGE)



6.1.4 Increase the number of events promoting electric vehicles. For example, 'EV Rodeos' can help increase community members' familiarity and comfortability with EVs.

STAKEHOLDER

- Portland General Electric (PGE)
- Forth Mobility



6.1.8 Install publicly-accessible community EV chargers in Tualatin. Community charging focuses on installing charging infrastructure in local areas like residential neighborhoods and commercial districts, typically in parking lots, shopping centers, or other public spaces, to provide convenient charging options for EV owners who primarily use their vehicles for distance travel. As of June 2024, the City is partnering with PGE to pursue a CFI grant to fund infrastructure.

STAKEHOLDERS

- City of Tualatin Community Development and Economic Development Departments
- US Department of Transportation (US DOT)
- Oregon Department of Transportation (ODOT)
- Forth Mobility



6.1.6 Conduct an electric car share pilot program at low income or high equity needs residential areas in Tualatin. EV car share pilot programs can help increase community members' familiarity and comfortability with EVs while providing a low-cost, low barrier to entry way for community members to get around town.



6.1.3 Develop policies and priorities around installation of publicly accessible charging stations in the right-of-way, including electric vehicle charging. Perform a study to determine needs and preferred locations for charging infrastructure.

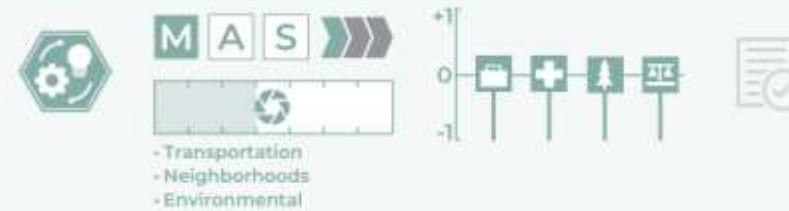


STAKEHOLDERS

- City of Tualatin Public Works and Community Development Departments, and the City Manager's Office

PLANNING DOCUMENTS

- Transportation System Plan (TSP)



Other Recommended Actions

1.1.7 Create park design standards to increase shade cover, shelter, increase the availability of drinking water fountains and water features in City parks.

POLICY/PLANNING DOCUMENT
- Parks System Plan



4.1.7 Establish citywide water conservation program. This program could include incentives for reducing indoor and outdoor water use and community education. Lower water use results in less energy used to pump water.

STAKEHOLDER
- City of Tualatin Public Works and Finance Departments



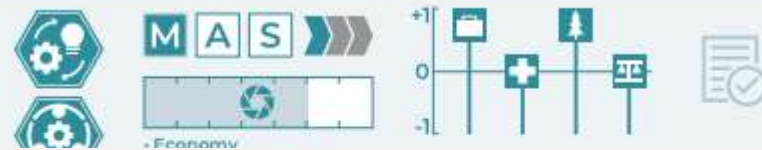
★ 4.2.1 Participate in the SolSmart program. SolSmart is a free program that provides technical assistance to local governments to reduce barriers to installing solar in their communities. The City of Tualatin is currently participating in the program.

STAKEHOLDER
- City of Tualatin Community Development Department



5.1.1 Reduce barriers to compact urban development in the downtown/town center(s), transit corridors. This could include identifying and reducing regulatory barriers, flexible uses within industrial and commercial zones; reducing financial obstacles; restructuring System Development Charges (SDCs) for smaller additions; offering flexible land use codes; and ensuring the transportation system can support planned development.

STAKEHOLDERS
- City of Tualatin Community Development and Public Works Departments



5.2.2 Update Tualatin's approved street tree list with climate adapted and/or drought resistant tree options to better withstand climate change. Trees should be selected based on their ability to withstand local changes in climate, growth rate, and resiliency to pests and disease. Consider including large shrubs to increase biodiversity and reduce impacts on infrastructure. The street tree list was last updated in 2019 – consider revisiting this list every 5 years to ensure the list is responsive to changes in climate. This action supports Strategy 1.1 and should be completed prior to action 1.1.1.

STAKEHOLDERS
- City of Tualatin Parks and Public Works Departments

PROGRAM
- Sidewalk/Street Tree program



City "Proof of Concept" Actions

4.1.8 Enroll in the Strategic Energy Management (SEM) program. SEM provides the tools and education to start saving energy today and continue saving over time. SEM participants learn how their businesses use energy and identify where waste is happening. Program participants have the opportunity to share best practices with a cohort of peers, learn to increase employee engagement and monitor the progress of their energy savings work.

STAKEHOLDER
 • Energy Trust of Oregon (ETO)

PROGRAM
 • Strategic Energy Management program



4.2.2 Enroll in PGE's Green Future Choice or Green Future Enterprise Renewable Power program(s) to match 100% of electricity use with renewable energy and help build more renewable energy projects in Oregon.

STAKEHOLDER
 • Portland General Electric (PGE)

PROGRAMS
 • Green Future Choice (for individual and small business customers)
 • Green Future Enterprise (for commercial/industrial customers)



7.3.1 Update Public Works construction code to require low emission concrete and asphalt materials. These could include warm mix asphalt (WMA), supplementary cementitious materials (SCMs) for portland cement, etc

STAKEHOLDERS
 • City of Tualatin Public Works and Community Development Departments



July 2024

July 2025

July 2026

December 2024

December 2025

CFI

8.1.11 Identify an ongoing funding source. By carry out actions that have a monetary c time employee recommended in anothe

★ 6.1.2 Promote programs to help fund installation of EV chargers at new and existing affordable housing and multifamily complexes. Prioritize multifamily housing and workplaces.

6.1.8 Install publicly-accessible community EV chargers in Tualatin. Community charging focuses on installing charging infrastructure in local

★ 6.1.3 Develop policies and priorities around installation of publicly accessible charging stations in the right-of-way, including electric vehicle charging. Perform a study to determine needs and preferred

6.1.4 Increase the number of events promoting electric vehicles. For example, 'EV Rodeos' can help increase community members' familiarity and comfortability with EVs.

6.1.6 Conduct an electric car share pilot program at low income or high equity needs residential areas in Tualatin. EV car share pilot programs can help increase

4.2.2 Enroll in PGE's Green Future Choice or Green Future Enterprise Renewable Power program(s) to match 100% of electricity use with renewable energy and help build more renewable energy projects in Oregon.

★ 4.2.1 Participate in the SolSmart program. SolSmart is a free program that provides technical assistance to local governments to reduce barriers to

4.1.8 Enroll in the Strategic Energy Management (SEM) program. SEM provides the tools and education to start saving energy today and continue saving over time. SEM participants learn how their businesses use

1.1.7 Create park design standards to increase shade cover, shelter, increase the availability of drinking water fountains and water features in City parks.

5.2.2 Update Tualatin's approved street tree list with climate adapted and/or drought resistant tree options to better withstand climate change. Trees should be selected based on their ability to withstand local changes in climate,

7.3.1 Update Public Works construction code to require low emission concrete and asphalt materials. These could include warm mix asphalt (WMA), supplementary cementitious materials (SCMs) for portland cement, etc

4.1.7 Establish citywide water conservation program. This program could include incentives for reducing indoor and outdoor water use and community education. Lower water use results in less energy used to pump water throughout the system.

5.1.1 Reduce barriers to compact urban development in the downtown/ town center(s), transit corridors. This could include identifying and reducing regulatory barriers, flexible

In Progress / On-Going Actions

Focus Area 1: Natural System, Resources & Infrastructure

IN PROGRESS

1.1.3 Continue partnering with the Regional Water Providers Consortium to share educational materials and resources related to water conservation and source water protection. Staff should continue to assist with the development and refinement of educational materials, provide related materials to Consortium members at meetings and events.

STAKEHOLDER
 • Regional Water Providers Consortium



IN PROGRESS

1.1.5 Advocate for Clean Water Services to update its stormwater treatment facility species list with species that are able to withstand increased temperatures, drought, occasional snow and ice storms, and fire. The City of Tualatin currently follows the Clean Water Services Low Impact Development

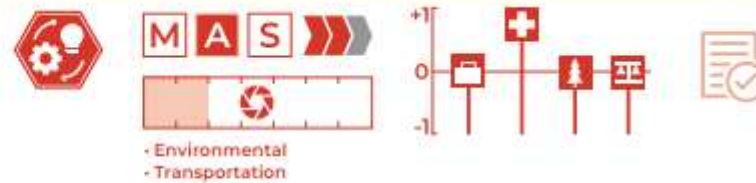
STAKEHOLDER
 • Clean Water Services



A
F
V
I
P
T
A
S
C
T
C

1.1.6 Develop parking lot design standards that result in cooler, shaded lots and prevent flooding risks. This could include requiring or providing incentives for cool pavement techniques to reflect heat, increase shade cover from trees and/or solar canopies, and increase drainage permeability of stormwater.

STAKEHOLDERS
 • City of Tualatin Public Works and Community Development Departments



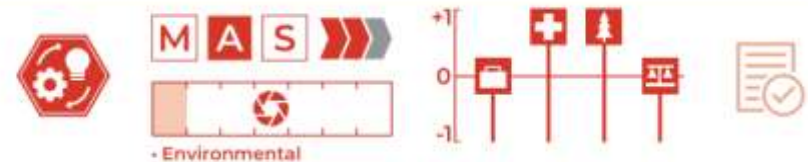
1.1.8 Work with TriMet and Ride Connection to increase shelter at bus stops. Prioritize efforts in higher equity needs areas of Tualatin. Additional shelter can provide shade in extreme heat events and cover during heavy precipitation events.

STAKEHOLDERS
 • TriMet
 • Ride Connection



1.3.8 Consider constructing large, regional stormwater management facilities to increase stormwater management capacity. Larger facilities provide greater flood mitigation and ease development burden,

STAKEHOLDER
 • Clean Water Services



In Progress / On-Going Actions

Focus Area 2: Health & Safety

2.1.4 Share information about available shelters in anticipation of and during extreme weather events, including extreme heat, freezing temperatures, and hazardous air quality due to wildfire smoke. Information should be shared through a variety of communications methods (e.g. social media, website, physical flyers, etc.) and should be available in both English and Spanish. This action supports Strategies 2.2 and 2.3.

IN PROGRESS



2.1.10 Share emergency preparedness resources in a free, easy-to-access preparedness kit available in English and Spanish. Preparedness information should relate to extreme weather events due to climate change (like extreme heat, wildfire and smoke, and heavy precipitation and flooding) as well as other disasters like earthquakes. This action also supports Strategies 2.2 and 2.3.

IN PROGRESS

STAKEHOLDERS

- Community Emergency Response Team (CERT)
- Washington County Emergency Management
- Clackamas County Disaster Management



2.1.13 Share information about available shelters in anticipation of and during extreme weather events, including extreme heat, freezing temperatures, and hazardous air quality due to wildfire smoke. Information should be shared through a variety of communications methods (e.g. social media, website, physical flyers, etc.) and should be available in both English and Spanish. This action supports Strategies 2.2 and 2.3.

IN PROGRESS



In Progress / On-Going Actions

Focus Area 5: Urban Form & Land Use

5.2.3 Continue to partner with Friends of Trees to plant trees in Tualatin. The City of Tualatin has partnered with Friends of Trees for 25 years and currently offers three tree planting events per year. These events focus on stream shading. The City could explore options to partner with Friends of Trees to plant street trees and/or trees in stormwater treatment facilities.

STAKEHOLDERS

- City of Tualatin Volunteer Services staff and Parks Department
- Friends of Trees

PROGRAMS

- Friends of Trees volunteer program
- City of Tualatin Volunteer Services



- Connected, Informed, Engaged
- Gathering Places
- Environmental

In Progress / On-Going Actions

Focus Area 6: Transportation



6.1.1 Establish parking and charging infrastructure requirements for electric vehicles (EVs) at new developments. Oregon Senate Bill 1044 sets zero emission vehicle (ZEV) targets for the state of Oregon. Under SB 1044, at least 90% of new vehicles sold annually will be EVs by

STAKEHOLDERS

- City of Tualatin Community Development Department
- Oregon Department of Land Conservation and Development

PROGRAMS



- Transportation
- Neighborhoods
- Environmental



6.1.7 Advocate to ODOT, Metro, and/or other regional partners to bring corridor charging to Tualatin. EV corridor charging involves installing charging stations along highways to create a network for long-distance

STAKEHOLDERS

- City of Tualatin Community Development Department
- Oregon Department of Transportation

6.3.1 Advocate for increased transit service coverage, frequency, and safety. Robust, reliable, and comfortable transit service can increase the appeal of taking transit over driving and create greater mobility for the entire community. This action supports strategy 2.3.

STAKEHOLDERS

- City of Tualatin City Manager's Office, Community Development Department
- TriMet
- Ride Connection

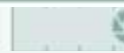


- Inclusive Community
- Transportation
- Environmental



6.2.1 Update the Transportation System Plan (TSP) to increase the use of active transportation options, including any human-powered transportation such as walking,

POLICY DOCUMENT



6.2.2 Update the Transportation System Plan (TSP) to increase the use of electric micromobility options such as e-bikes, e-scooters, and electric skateboards. Embed electric micromobility modes throughout the plan and focus on making these options a viable option to move throughout the City. Electric micromobility modes offer many of the same benefits as active transportation but are worthy of independent consideration given charging needs, potential safety concerns and conflicts with non-motorized active transit users.

STAKEHOLDER

- City of Tualatin Community Development Department

POLICY DOCUMENT



6.3.4 Increase micromobility access through programs like the e-scooter program in Tualatin. Micromobility options like e-scooters and e-bikes help to support low-carbon transportation, particularly for first and last-mile travel.

STAKEHOLDER

- City of Tualatin Public Works

PROGRAM

- E-Scooter program



- Economy
- Transportation
- Environmental



In Progress / On-Going Actions

Focus Area 7: Consumption – Food & Goods

7.1.2 Educate community members about best practices for curbside composting to support the curbside composting programs. The City of Tualatin is conducting a residential organics (curbside composting) pilot program with Republic Services from July to December 2023. Tualatin residents who

STAKEHOLDERS

- City of Tualatin Public Works Department
- Republic Services

PROGRAM

- Residential Organics (Curbside Composting)



IN PROGRESS

7.1.3 Support Washington County's commercial and industrial composting program. Currently, the City supports the program by sharing information and assisting with compliance, if needed. In 2019, the City adopted Ordinance 1420-19 to reinforce the goals of the program.

STAKEHOLDERS

- City of Tualatin Public Works Department
- Washington County
- Republic Services

PROGRAM

- Environmental



IN PROGRESS

7.2.1 Participate in annual Food Waste Prevention Week educational campaign. This campaign aims to educate and inspire real cultural change around food waste in order to help families save money, reduce the

STAKEHOLDERS

- City of Tualatin Public Works Department
- Oregon Department of Environmental Quality (ODEQ)

PROGRAM

- Connected, Informed, Engaged Environmental



IN PROGRESS

7.4.1 Host and promote Repair Fairs to help consumers repair goods and instruct participants how to make their own repairs. Repair Fairs help consumers avoid purchasing more goods. Repair services are available for a variety of products, including small appliance such as lamps and toasters, tools, clothing and textiles, small electronic home and garden tools, furniture, and toys.

STAKEHOLDERS

- City of Tualatin Public Library
- Washington County Health & Human Services (HHS)

PROGRAM

- Connected, Informed, Engaged Environmental



IN PROGRESS

7.4.2 Expand Library of Things offerings to increase community access to minimal-use items (such as power tools, home appliances, entertainment, etc.). Communicate about Library of Things offerings to increase public awareness of this resource. Consider expanding to a "tool library" model to increase access to useful tools.

STAKEHOLDER

- City of Tualatin Public Library

PROGRAM

- Library of Things

Environmental



IN PROGRESS

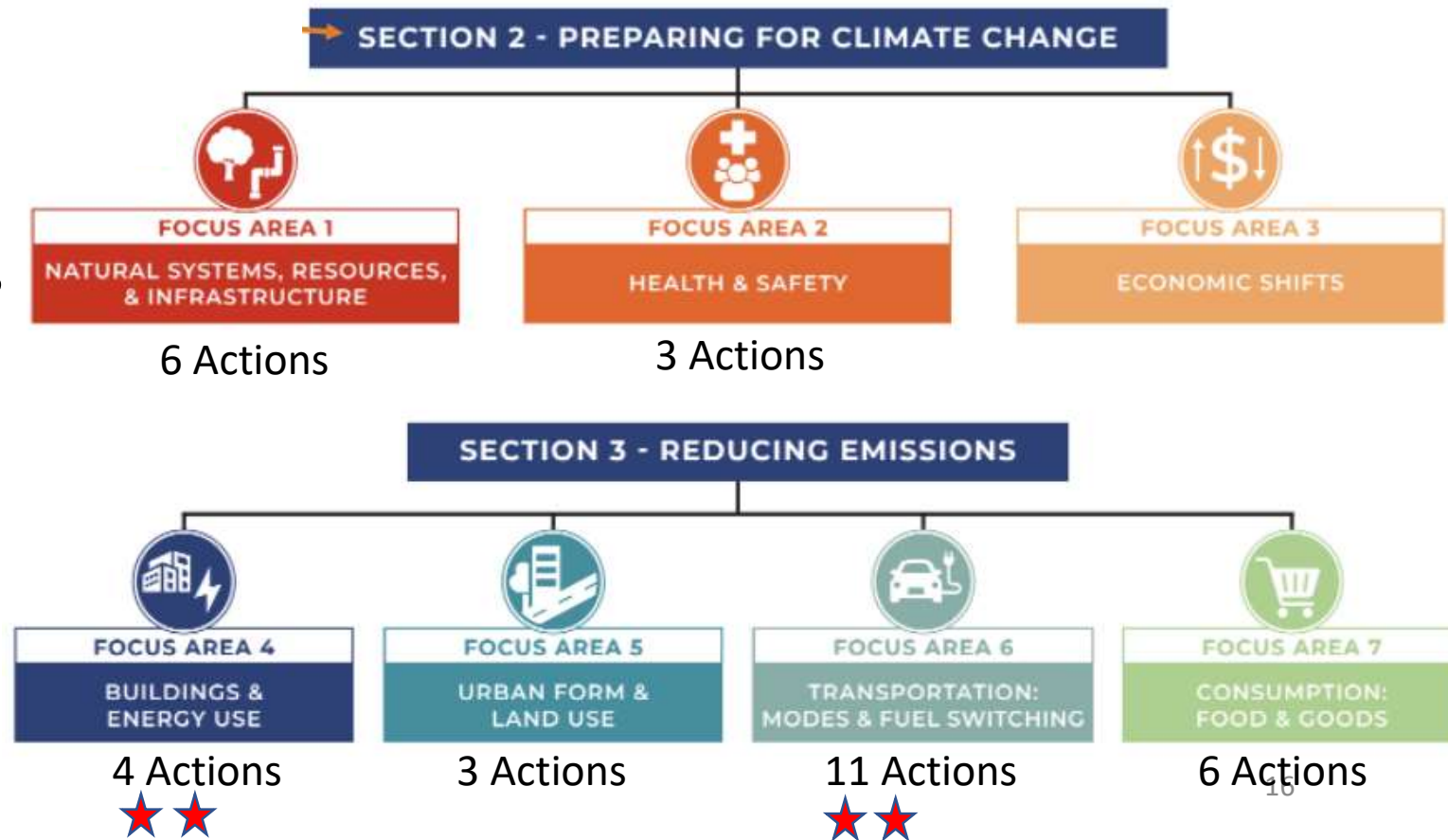
Recommended 24-26 CAP Work Plan

✓ 33 Actions (23% of all actions)

✓ 4 of the Top 10 Priority Actions

✓ 6 of 7 Focus Areas

✓ Both Adaptation & Mitigation



Next Steps

- Moving forward with CFI grant
 - Hiring staff person
 - Bringing forward grant authorization to Council
- Moving forward with study to analyze options for CAP program funding
 - Present options to Council, 1Q25
 - Anticipate hiring staff for the program in 2025
- Bring work plan progress update/check-in to Council, July 2025

8.1.9 Annual progress reports. Create annual reports on progress of actions and outcomes achieved to increase public accountability.

8.1.10 Update plan every 5 years. Every 5 years the CAP and emissions inventory should be updated. This will help measure progress of emissions reductions and allow the plan to capture new policies, programs, partnerships, and technologies that become available over time.

Recommendation

- Council approval of the 24-26 Climate Action Plan Work Plan