

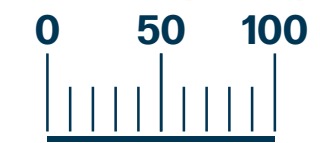
# Tonquin Substation

Exhibit B

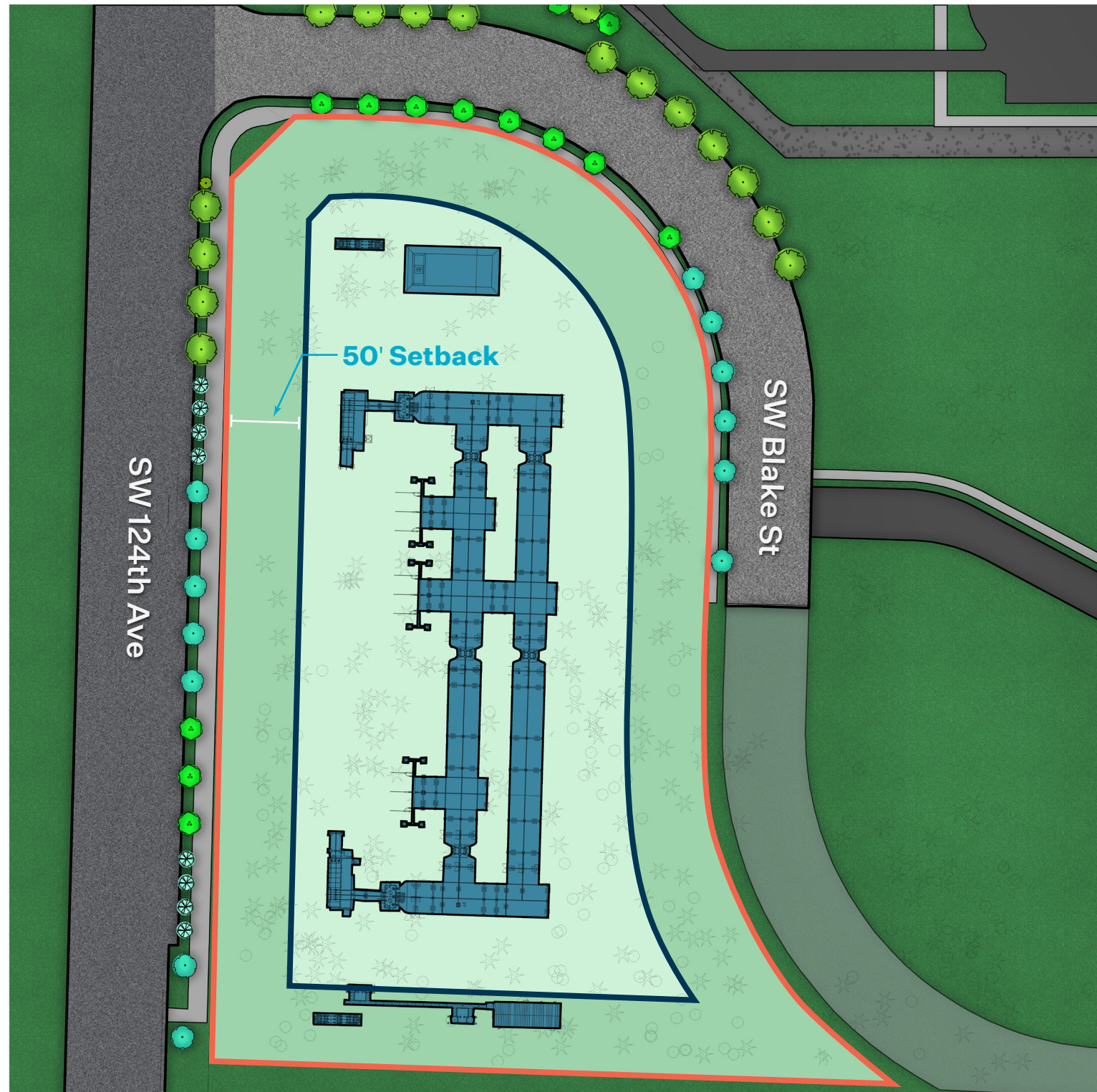
## Legend

- Project Boundary
- Setback Boundary

## Scale (feet)



## 50-Foot Setback



## Comments:

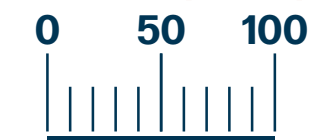
- Developable Area: 95,000 s.f.
- Inadequate circulation within the substation for repairs and emergencies
- All substation equipment does not fit within the fence line
- Substation equipment is too close to fence
- Substation equipment layout would not meet requirements of the National Electric Safety Code (NESC)

# Tonquin Substation

## Legend

- Project Boundary
- Setback Boundary

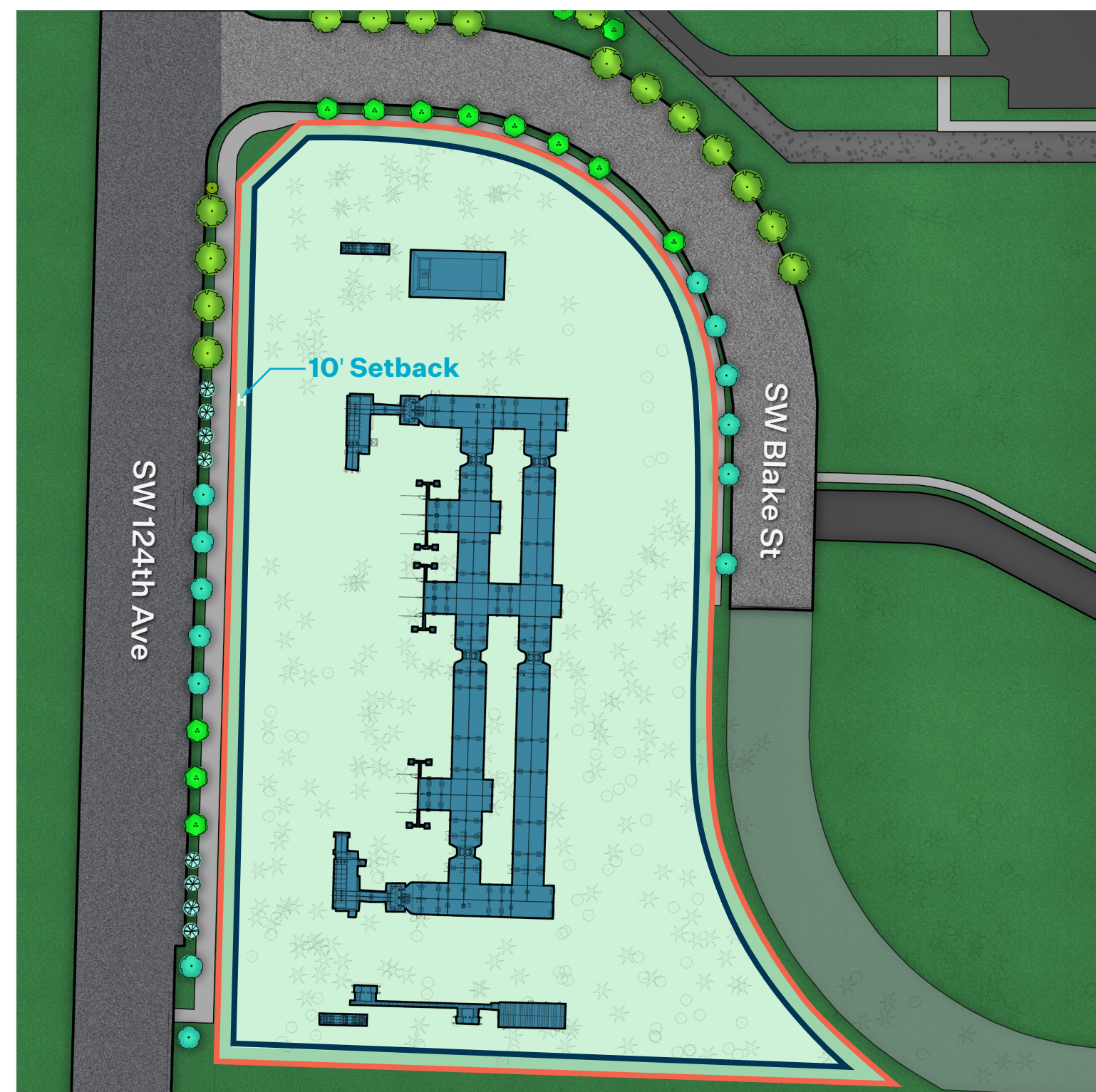
## Scale (feet)

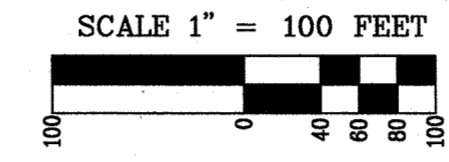
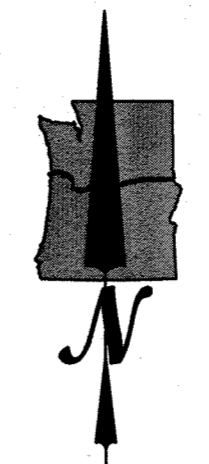
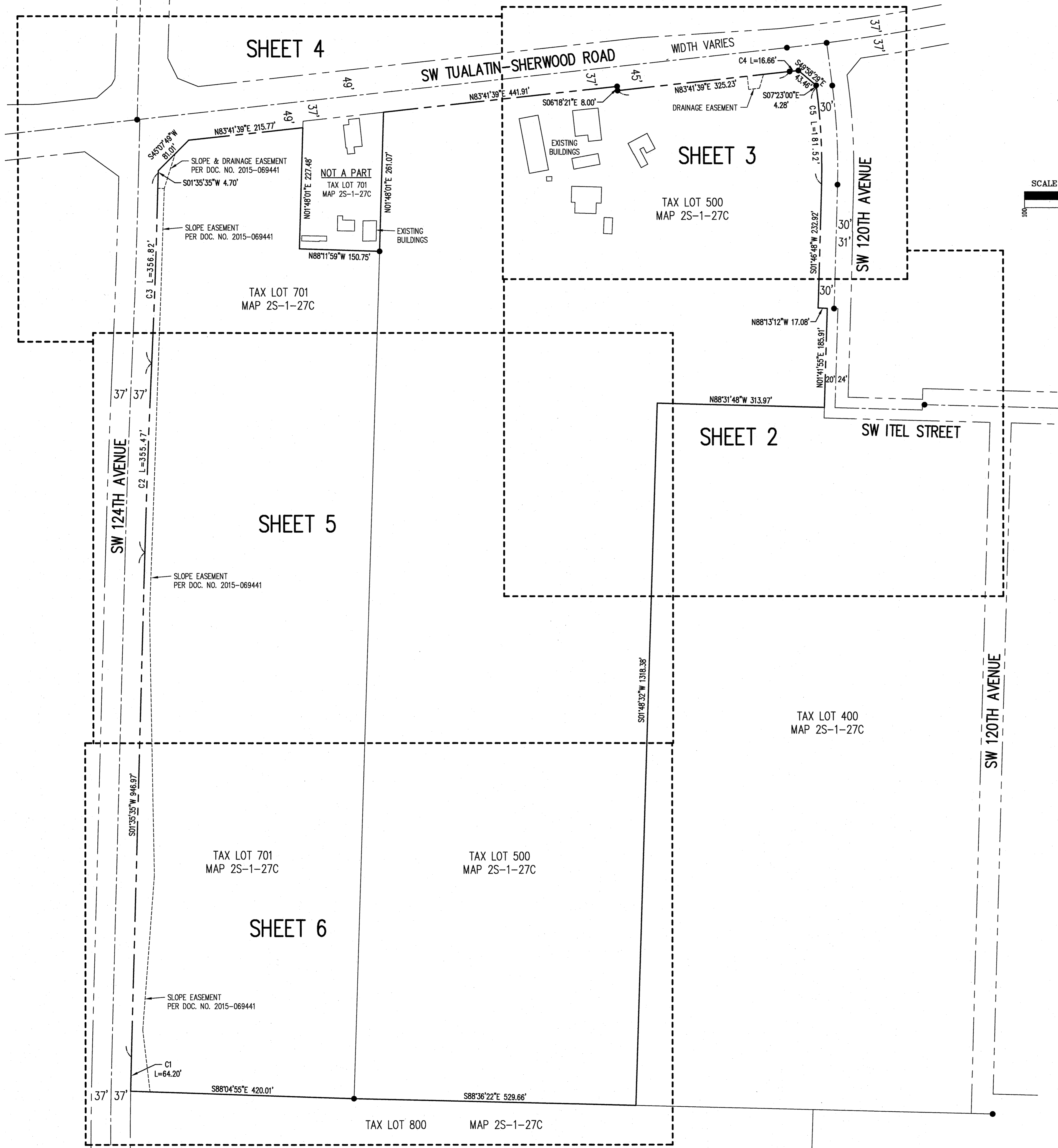


## Comments:

- Developable Area: 155,000 s.f.
- Adequate circulation within the substation for repairs and emergencies
- All substation equipment fits within the fence line
- Substation equipment is setback safe distance from fence
- Substation equipment layout and clearances meet minimum requirements of the National Electric Safety Code (NESC)

## 10-Foot Setback





**LEGEND**

CONIFEROUS TREE		DECIDUOUS TREE	
FIRE HYDRANT		GAS VALVE	
WATER BLOWOFF		GUY WIRE ANCHOR	
WATER METER		UTILITY POLE	
WATER VALVE		POWER VAULT	
WATER VAULT MANHOLE		POWER JUNCTION BOX	
SANITARY SEWER CLEAN OUT		STREET LIGHT	
SANITARY SEWER MANHOLE		TELEPHONE MANHOLE	
STORM SEWER CATCH BASIN		TELEPHONE/TELEVISION JUNCTION BOX	
STORM SEWER CURB INLET		TELEPHONE/TELEVISION RISER	
STORM SEWER MANHOLE		SIGNAL JUNCTION BOX	
MAILBOX		FOUND SURVEY MONUMENT	
SIGN			

RIGHT-OF-WAY LINE	
BOUNDARY LINE	
PROPERTY LINE	
CENTERLINE	
CURB	
EDGE OF PAVEMENT	
EASEMENT	
FENCE LINE	
GRAVEL EDGE	
POWER LINE	
OVERHEAD WIRE	
TELEPHONE LINE	
GAS LINE	
STORM SEWER LINE	
SANITARY SEWER LINE	
WATER LINE	

**CURVE TABLE**

CURVE	LENGTH	RADIUS	DELTA ANGLE	CHORD
C1	64.20'	6163.00'	0°35'49"	S01°17'41"W 64.20'
C2	355.47'	19061.59'	1°04'07"	S02°07'38"W 355.46'
C3	356.82'	19135.59'	1°04'06"	N02°07'38"E 356.81'
C4	16.66'	4045.00'	0°14'10"	N83°34'34"E 16.66'
C5	181.52'	1135.00'	9°09'48"	N02°48'06"W 181.33'

- NOTES**
- 1) THE MAJORITY OF THE FIELD SURVEYING FOR THIS MAP WAS COMPLETED JANUARY 4, 2019. A PORTION IN THE SOUTHWEST CORNER OF THE PROPERTY CONTAINS DENSE BRUSH AND IS TO BE SURVEYED IN THE NEAR FUTURE.
  - 2) ELEVATIONS AND CONTOURS ARE BASED ON WASHINGTON COUNTY BENCHMARK NO. 102. THE BENCHMARK IS A BRASS DISK LOCATED AT THE INTERSECTION OF SW CIOLE ROAD AND THE SOUTHERN PACIFIC RAILROAD RIGHT-OF-WAY. IT HAS AN ELEVATION OF 157.30 FEET ON THE NGVD 1929 DATUM. THAT ELEVATION WAS CONVERTED TO THE NAVD 1988 DATUM BY USING THE WASHINGTON COUNTY AVERAGE ADJUSTMENT OF 3.52 FEET. THE BENCHMARK ELEVATION ON THE NAVD 1988 DATUM IS 160.82 FEET.
  - 3) THE BASIS OF BEARINGS FOR THIS SURVEY IS THE OREGON STATE PLANE COORDINATE SYSTEM, NORTH ZONE, NAD(83).
  - 4) RIGHT-OF-WAY WIDTHS ARE BASED ON THE DEDICATION DEEDS, COUNTY TAX ASSESSOR'S MAP AND MULTIPLE RECORDED SURVEYS.
  - 5) THE EASEMENTS SHOWN ON THIS MAP ARE BASED ON THE PRELIMINARY REPORT, PREPARED BY FIDELITY NATIONAL TITLE COMPANY OF OREGON, WITH ORDER NUMBER 45141819773 WITH AN EFFECTIVE DATE OF NOVEMBER 1, 2018 AT 8:00 AM.
  - 6) THE UNDERGROUND UTILITIES ARE BASED ON THE MARKINGS PER LOCATE TICKET NUMBERS 18280911 AND 18291289.
  - 7) WITHIN THE SOUTHERLY PORTION OF TAX LOT 700 WHERE THE TREES ARE LOCATED THERE ARE AREAS OF DENSE BRUSH. THE CLIENT PROVIDED SOME BRUSH REMOVAL TO ACCESS THE TREES, AND AN EFFORT WAS MADE TO PROVIDE A DETAILED TOPOGRAPHY OF THAT AREA. HOWEVER CONTOURS MAY VARY FROM ACTUAL GROUND ELEVATION WITHIN THE REMAINING AREAS OF DENSE BRUSH.

**UTILITY STATEMENT**

THE UNDERGROUND UTILITIES SHOWN HAVE BEEN LOCATED FROM FIELD SURVEY INFORMATION AND EXISTING DRAWINGS. THE SURVEYOR MAKES NO GUARANTEE THAT THE UNDERGROUND UTILITIES SHOWN COMPRISE ALL SUCH UTILITIES IN THE AREA, EITHER IN SERVICE OR ABANDONED. THE SURVEYOR FURTHER DOES NOT WARRANT THAT THE UNDERGROUND UTILITIES SHOWN ARE IN THE EXACT LOCATION INDICATED ALTHOUGH HE DOES CERTIFY THAT THEY ARE LOCATED AS ACCURATELY AS POSSIBLE FROM INFORMATION AVAILABLE. THE SURVEYOR HAS NOT PHYSICALLY LOCATED THE UNDERGROUND UTILITIES.

SEE SHEETS 2-6 FOR TOPOGRAPHIC INFORMATION  
SEE SHEET 7 FOR TREE INFORMATION

**ORTHWEST SURVEYING, INC.**  
 1815 NW BUSHY CREEK, SUITE 2090  
 BEAVERTON, OR, 97006  
 PH: (503) 848-2127 FAX: (503) 848-2179  
 EMAIL: [westsurveys@orthwestsurveying.com](mailto:westsurveys@orthwestsurveying.com)

LOCATED IN THE SW 1/4 OF SECTION 27,  
 TOWNSHIP 2 SOUTH, RANGE 1 WEST, WM.,  
 CITY OF TUALATIN,  
 WASHINGTON COUNTY, OREGON

**TOPOGRAPHIC SURVEY OREGON**  
 TAX MAP 2S-1-27C

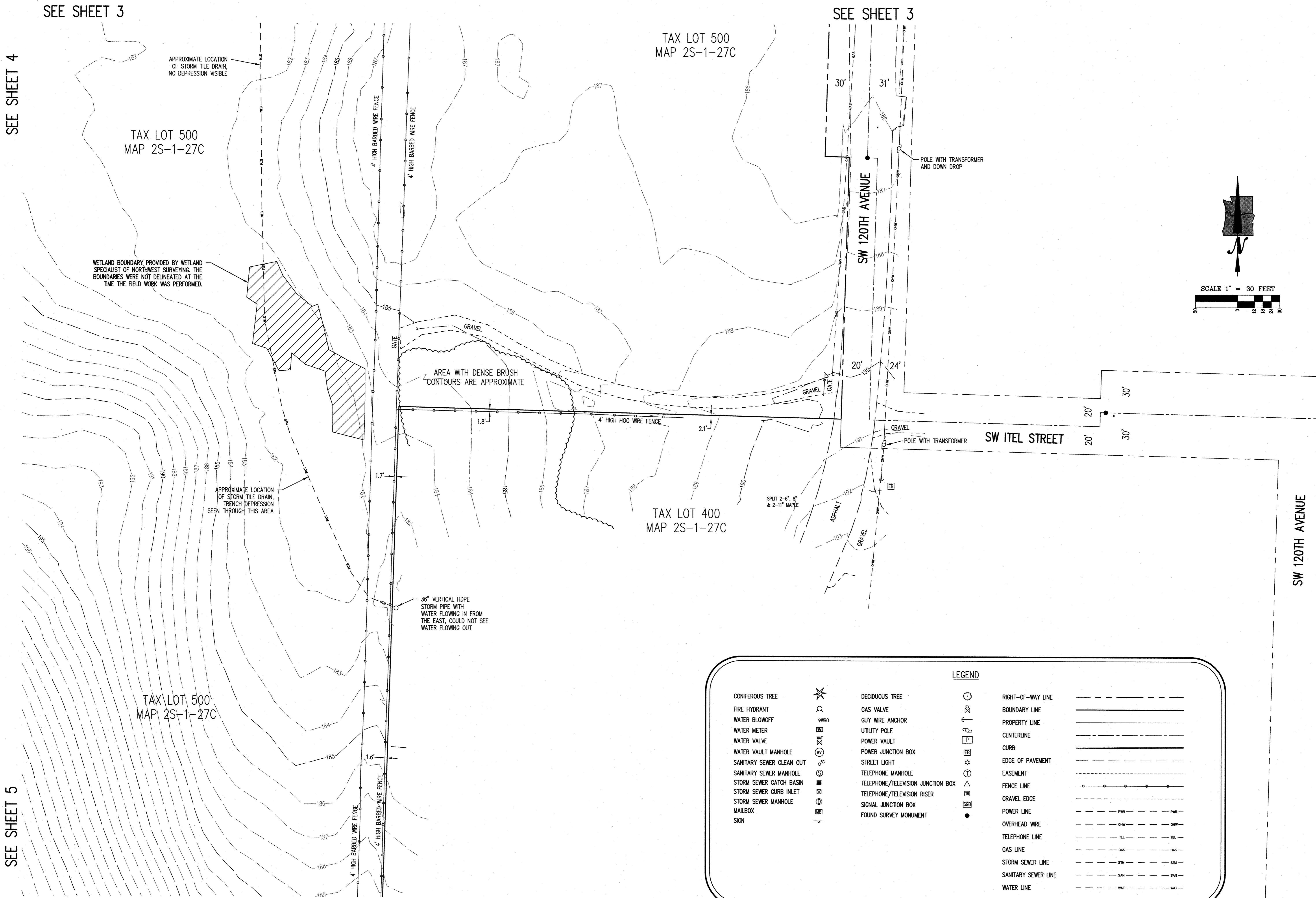
**TUALATIN, OREGON**  
 TAX LOTS 500 & 701

DRAWING NO.: 1883 TOPO  
 SCALE: AS NOTED  
 DRAWING GENERATED BY: LDZ004  
 DRAWN BY: CDW  
 CHECKED BY: CHS  
**PREPARED FOR:**  
 DREYFUSS+BLACKFORD ARCHITECTURE  
 3540 FOLSOM BOULEVARD  
 SACRAMENTO, CA 95816

**REVISIONS:**  
 INITIAL RELEASE: JAN. 16, 2019  
 UPDATE TREES: FEB. 18, 2019

REGISTERED PROFESSIONAL LAND SURVEYOR  
  
 OREGON  
 JANUARY 15, 2002  
 CLINTON H. STUBBS JR.  
 55469LS  
 RENEWS: 06/30/20

JOB NUMBER  
**1883**  
 SHEET  
**1 OF 7**



SEE SHEET 4

SEE SHEET 5

SEE SHEET 3

SEE SHEET 3

TAX LOT 500  
MAP 2S-1-27C

TAX LOT 500  
MAP 2S-1-27C

TAX LOT 400  
MAP 2S-1-27C

TAX LOT 500  
MAP 2S-1-27C

SEE SHEET 5

APPROXIMATE LOCATION OF STORM TILE DRAIN, NO DEPRESSION VISIBLE

WETLAND BOUNDARY PROVIDED BY WETLAND SPECIALIST OF NORTHWEST SURVEYING. THE BOUNDARIES WERE NOT DELINEATED AT THE TIME THE FIELD WORK WAS PERFORMED.

APPROXIMATE LOCATION OF STORM TILE DRAIN, TRENCH DEPRESSION SEEN THROUGH THIS AREA

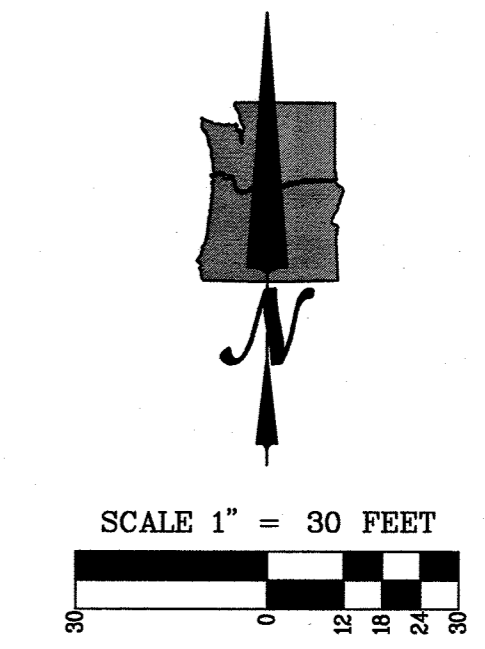
AREA WITH DENSE BRUSH CONTOURS ARE APPROXIMATE

36" VERTICAL HDPE STORM PIPE WITH WATER FLOWING IN FROM THE EAST, COULD NOT SEE WATER FLOWING OUT

POLE WITH TRANSFORMER AND DOWN DROP

POLE WITH TRANSFORMER

SPRUT 2-6", 8" & 2-11" MAPLE



LEGEND	
CONIFEROUS TREE	DECIDUOUS TREE
FIRE HYDRANT	GAS VALVE
WATER BLOWOFF	GUY WIRE ANCHOR
WATER METER	UTILITY POLE
WATER VALVE	POWER VAULT
WATER VAULT MANHOLE	POWER JUNCTION BOX
SANITARY SEWER CLEAN OUT	STREET LIGHT
SANITARY SEWER MANHOLE	TELEPHONE MANHOLE
STORM SEWER CATCH BASIN	TELEPHONE/TELEVISION JUNCTION BOX
STORM SEWER CURB INLET	TELEPHONE/TELEVISION RISER
STORM SEWER MANHOLE	SIGNAL JUNCTION BOX
MAILBOX	FOUND SURVEY MONUMENT
SIGN	
RIGHT-OF-WAY LINE	BOUNDARY LINE
PROPERTY LINE	CENTERLINE
CURB	EDGE OF PAVEMENT
EASEMENT	FENCE LINE
GRAVEL EDGE	GRAVEL
POWER LINE	OVERHEAD WIRE
TELEPHONE LINE	GAS LINE
STORM SEWER LINE	SANITARY SEWER LINE
WATER LINE	

**NORTHWEST SURVEYING, INC.**  
1815 NW 169th PLACE, SUITE 2090  
BEAVERTON, OR 97006  
PH: (503) 848-2127 FAX: (503) 848-2179  
EMAIL: nwsurveying@nwsi.com

LOCATED IN THE SW 1/4 OF SECTION 27,  
TOWNSHIP 2 SOUTH, RANGE 1 WEST, W.M.,  
CITY OF TUALATIN,  
WASHINGTON COUNTY, OREGON

**TOPOGRAPHIC SURVEY OREGON**  
TAX MAP 2S-1-27C  
**TUALATIN, OREGON**  
TAX LOTS 500 & 701

DRAWING NO.: 1883 TOPO  
SCALE: AS NOTED  
DRAWING GENERATED BY: LD2004  
DRAWN BY: CDW  
CHECKED BY: CHS  
PREPARED FOR:  
DREYFUSS-BLACKFORD ARCHITECTURE  
3540 FOLSOM BOULEVARD  
SACRAMENTO, CA 95816

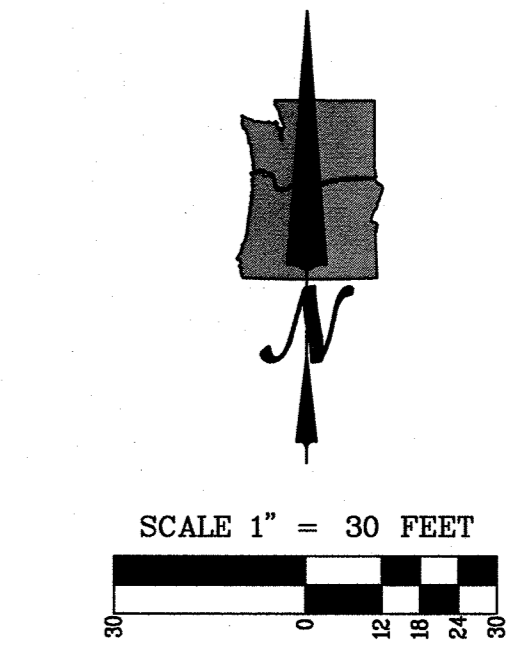
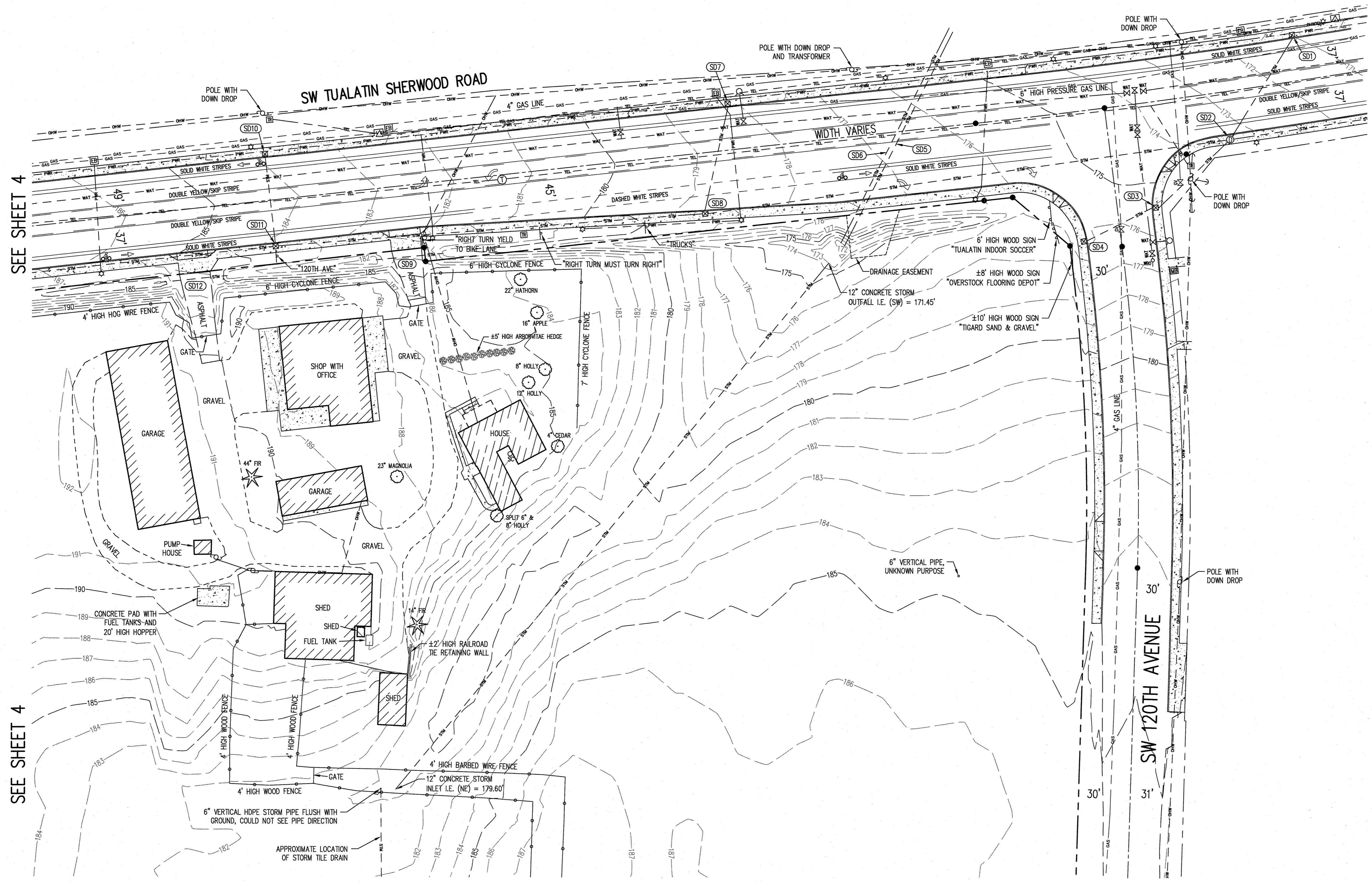
REVISIONS:  
INITIAL RELEASE: JAN. 16, 2019  
UPDATE TREES: FEB. 18, 2019

REGISTERED PROFESSIONAL LAND SURVEYOR  
OREGON  
JANUARY 15, 2009  
CLINTON H. STUBBS JR.  
55469LS  
RENEWS: 06/30/20

JOB NUMBER  
**1883**

SHEET  
**2 OF 7**

LEGEND			
CONIFEROUS TREE		SANITARY SEWER CLEAN OUT	
FIRE HYDRANT		SANITARY SEWER MANHOLE	
WATER BLOWOFF		STORM SEWER CATCH BASIN	
WATER METER		STORM SEWER CURB INLET	
WATER VALVE		STORM SEWER MANHOLE	
WATER VAULT MANHOLE		MAILBOX	
RIGHT-OF-WAY LINE		SIGN	
BOUNDARY LINE		CURB	
PROPERTY LINE		EDGE OF PAVEMENT	
CENTERLINE		EASEMENT	
		FENCE LINE	
		DECIDUOUS TREE	
		GAS VALVE	
		GUY WIRE ANCHOR	
		UTILITY POLE	
		POWER VAULT	
		POWER JUNCTION BOX	
		STREET LIGHT	
		TELEPHONE MANHOLE	
		TELEPHONE/TELEVISION JUNCTION BOX	
		TELEPHONE/TELEVISION RISER	
		SIGNAL JUNCTION BOX	
		FOUND SURVEY MONUMENT	
		GRAVEL EDGE	
		POWER LINE	
		OVERHEAD WIRE	
		TELEPHONE LINE	
		GAS LINE	
		STORM SEWER LINE	
		SANITARY SEWER LINE	
		WATER LINE	



**STORM SEWER INFORMATION**

- SD10 CURB INLET  
RIM = 171.85'  
INLET ELEV. = 170.97'  
12" I.E. OUT (SW) = 166.9'
- SD11 MANHOLE  
RIM = 173.88'  
12" I.E. IN (SW) = 169.7'  
12" I.E. IN (NE) = 166.3'  
24" I.E. IN (W) = 166.5'  
24" I.E. OUT (E) = 166.2'
- SD12 CURB INLET  
RIM = 176.07'  
INLET ELEV. = 175.33'  
12" I.E. IN (SW) = 170.3'  
12" I.E. OUT (NE) = 170.2'
- SD13 CURB INLET  
RIM = 176.53'  
INLET ELEV. = 175.87'  
12" I.E. OUT (NE) = 171.4'
- SD14 CONCRETE STORM CULVERT  
21" I.E. IN (SW) = 171.14'  
21" I.E. OUT (NE) = 167.66'
- SD15 CONCRETE STORM CULVERT  
21" I.E. IN (SW) = 171.21'  
21" I.E. OUT (NE) = 167.58'
- SD16 CURB INLET  
RIM = 178.73'  
INLET ELEV. = 178.11'  
10" I.E. OUT (SW) = 175.1'
- SD17 CURB INLET  
RIM = 179.32'  
10" I.E. IN (N) = 174.7'  
24" I.E. IN (W) = 167.6'  
24" I.E. OUT (E) = 167.5'
- SD18 CONCRETE STORM CULVERT  
21" I.E. IN (W) = 180.93'  
21" I.E. OUT (E) = 180.30'
- SD19 CURB INLET  
RIM = 184.52'  
INLET ELEV. = 183.83'  
10" I.E. OUT (S) = 180.1'
- SD20 CURB INLET  
RIM = 184.48'  
INLET ELEV. = 183.8'  
10" I.E. IN (N) = 179.6'  
24" I.E. IN (W) = 176.6'  
24" I.E. OUT (E) = 176.2'
- SD21 CONCRETE STORM CULVERT  
21" I.E. IN (W) = 184.17'  
21" I.E. OUT (E) = 182.82'

SEE SHEET 4

SEE SHEET 4

SEE SHEET 2

SEE SHEET 2

**ORTHWEST SURVEYING, INC.**  
 1815 NW 186th Place, Suite 2090  
 Beaverton, OR 97006  
 PH: (503) 848-2127 FAX: (503) 848-2179  
 EMAIL: [info@orthwestsurveying.com](mailto:info@orthwestsurveying.com)

LOCATED IN THE SW 1/4 OF SECTION 27,  
 TOWNSHIP 2 SOUTH, RANGE 1 WEST, W.M.,  
 CITY OF TUALATIN, OREGON  
 WASHINGTON COUNTY.

**TOPOGRAPHIC SURVEY OREGON**  
 TUALATIN, OREGON  
 TAX LOTS 500 & 701

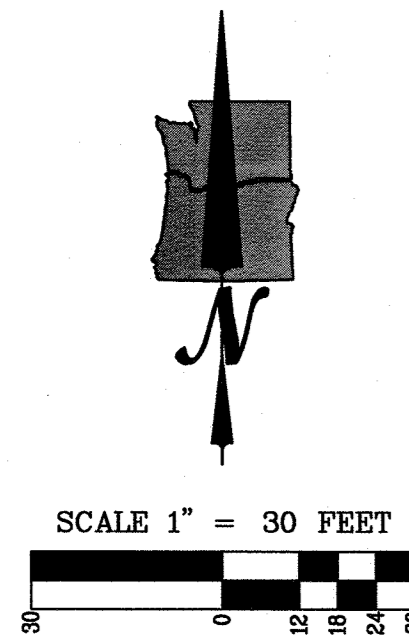
DRAWING NO.: 1883 TOPO  
 SCALE: AS NOTED  
 DRAWING GENERATED BY: LD2004  
 DRAWN BY: CDW  
 CHECKED BY: CHS  
**PREPARED FOR:**  
 DREYFUS+BLACKFORD ARCHITECTURE  
 3540 FOLSOM BOULEVARD  
 SACRAMENTO, CA 95816

REVISIONS:  
 INITIAL RELEASE: JAN. 16, 2019  
 UPDATE TREES: FEB. 18, 2019

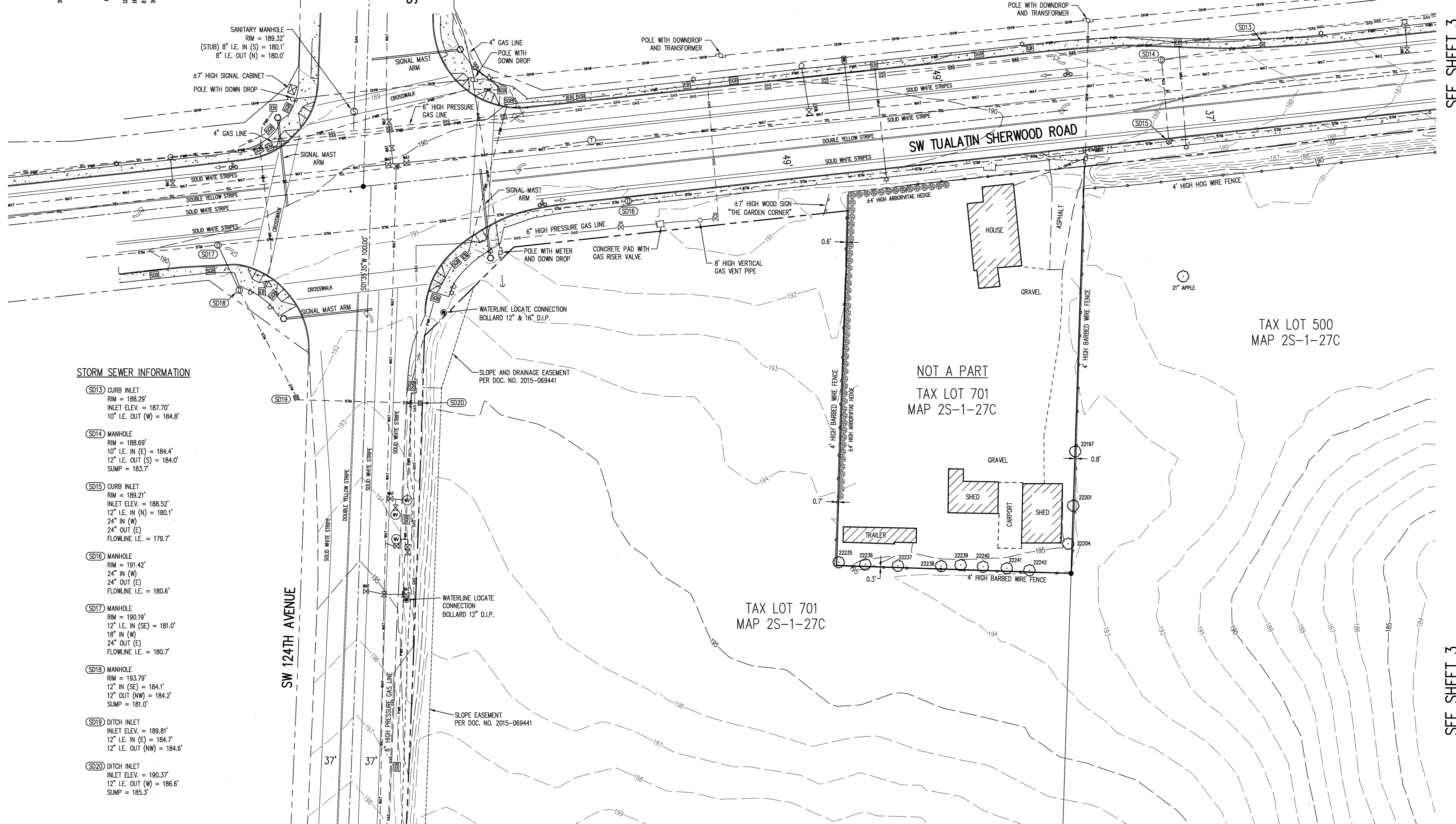
REGISTERED PROFESSIONAL LAND SURVEYOR  
  
 OREGON  
 JANUARY 15, 2002  
 CLINTON H. STUBBS JR.  
 55469LS  
 RENEWS: 06/30/20

JOB NUMBER  
**1883**

SHEET  
**3 OF 7**



LEGEND	
CONIFEROUS TREE	★
FIRE HYDRANT	⊕
WATER BLOWOFF	⊙
WATER METER	⊗
WATER VALVE	⊕
WATER VAULT MANHOLE	⊗
RIGHT-OF-WAY LINE	— — — — —
BOUNDARY LINE	— — — — —
PROPERTY LINE	— — — — —
CENTERLINE	— — — — —
SANITARY SEWER CLEAN OUT	⊕
SANITARY SEWER MANHOLE	⊗
STORM SEWER CATCH BASIN	⊗
STORM SEWER CURB INLET	⊗
STORM SEWER MANHOLE	⊗
MAILBOX	⊗
SIGN	⊗
CURB	— — — — —
EDGE OF PAVEMENT	— — — — —
EASEMENT	— — — — —
FENCE LINE	— — — — —
DECIDUOUS TREE	⊙
GAS VALVE	⊕
GUY WIRE ANCHOR	⊕
UTILITY POLE	⊕
POWER VAULT	⊕
POWER JUNCTION BOX	⊕
GRAVEL EDGE	— — — — —
POWER LINE	— — — — —
OVERHEAD WIRE	— — — — —
TELEPHONE LINE	— — — — —
STREET LIGHT	☆
TELEPHONE MANHOLE	⊕
TELEPHONE/TELEVISION JUNCTION BOX	⊕
TELEPHONE/TELEVISION RISER	⊕
SIGNAL JUNCTION BOX	⊕
FOUND SURVEY MONUMENT	●
GAS LINE	— — — — —
STORM SEWER LINE	— — — — —
SANITARY SEWER LINE	— — — — —
WATER LINE	— — — — —



**STORM SEWER INFORMATION**

SD13 CURB INLET	RIM = 188.29'
	INLET ELEV. = 187.70'
	10" I.E. OUT (W) = 184.8'
SD14 MANHOLE	RIM = 188.69'
	10" I.E. IN (E) = 184.4'
	12" I.E. OUT (S) = 184.0'
	SUMP = 183.7'
SD15 CURB INLET	RIM = 189.21'
	INLET ELEV. = 188.52'
	12" I.E. IN (N) = 180.1'
	24" IN (W)
	24" OUT (E)
	FLOWLINE I.E. = 179.7'
SD16 MANHOLE	RIM = 191.42'
	24" IN (W)
	24" OUT (E)
	FLOWLINE I.E. = 180.6'
SD17 MANHOLE	RIM = 190.19'
	12" I.E. IN (SE) = 181.0'
	18" IN (W)
	24" OUT (E)
	FLOWLINE I.E. = 180.7'
SD18 MANHOLE	RIM = 193.79'
	12" IN (SE) = 184.1'
	12" OUT (NW) = 184.2'
	SUMP = 181.0'
SD19 DITCH INLET	INLET ELEV. = 189.81'
	12" I.E. IN (E) = 184.7'
	12" I.E. OUT (NW) = 184.6'
SD20 DITCH INLET	INLET ELEV. = 190.37'
	12" I.E. OUT (W) = 186.6'
	SUMP = 185.3'

SEE SHEET 5

SEE SHEET 5

SEE SHEET 3

SEE SHEET 3

**NORTHWEST SURVEYING, INC.**  
 1815 NW HESTON, SUITE 2090  
 BEAVERTON, OR, 97005  
 PH: (503) 648-2127 FAX: (503) 648-2179  
 EMAIL: [info@northwestsurveying.com](mailto:info@northwestsurveying.com)

LOCATED IN THE SW 1/4 OF SECTION 27,  
 TOWNSHIP 2 SOUTH, RANGE 1 WEST, W.M.,  
 CITY OF TUALATIN, OREGON  
 WASHINGTON COUNTY, OREGON

**TOPOGRAPHIC SURVEY**  
**OREGON**  
 TUALATIN,  
 TAX LOTS 500 & 701

DRAWING NO.: 1883 TOPO  
 SCALE: AS NOTED  
 DRAWING GENERATED BY: LD2004  
 DRAWN BY: CDW  
 CHECKED BY: CHS  
**PREPARED FOR:**  
 DREYFUSS-BLACKFORD ARCHITECTURE  
 3540 FOLSOM BOULEVARD  
 SACRAMENTO, CA 95816

REVISIONS:  
 INITIAL RELEASE: JAN. 16, 2019  
 UPDATE TREES: FEB. 18, 2019

REGISTERED PROFESSIONAL LAND SURVEYOR  
  
 OREGON  
 JANUARY 15, 2002  
 CLINTON H. STUBBS JR.  
 55469LS  
 RENEWS: 06/30/20

JOB NUMBER  
**1883**  
 SHEET  
**4 OF 7**

SW 124TH AVENUE

SEE SHEET 4

SEE SHEET 2

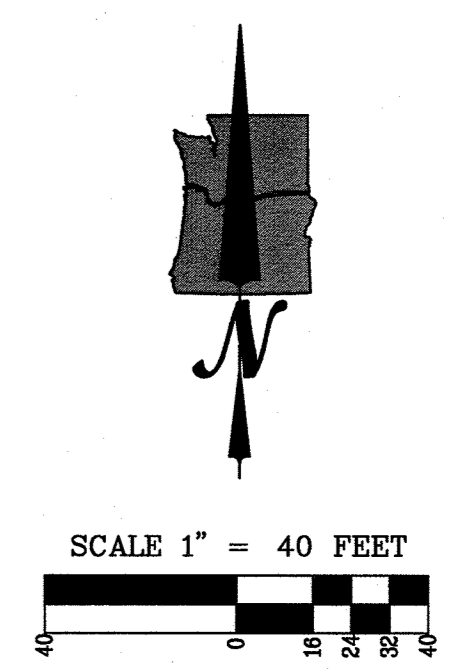
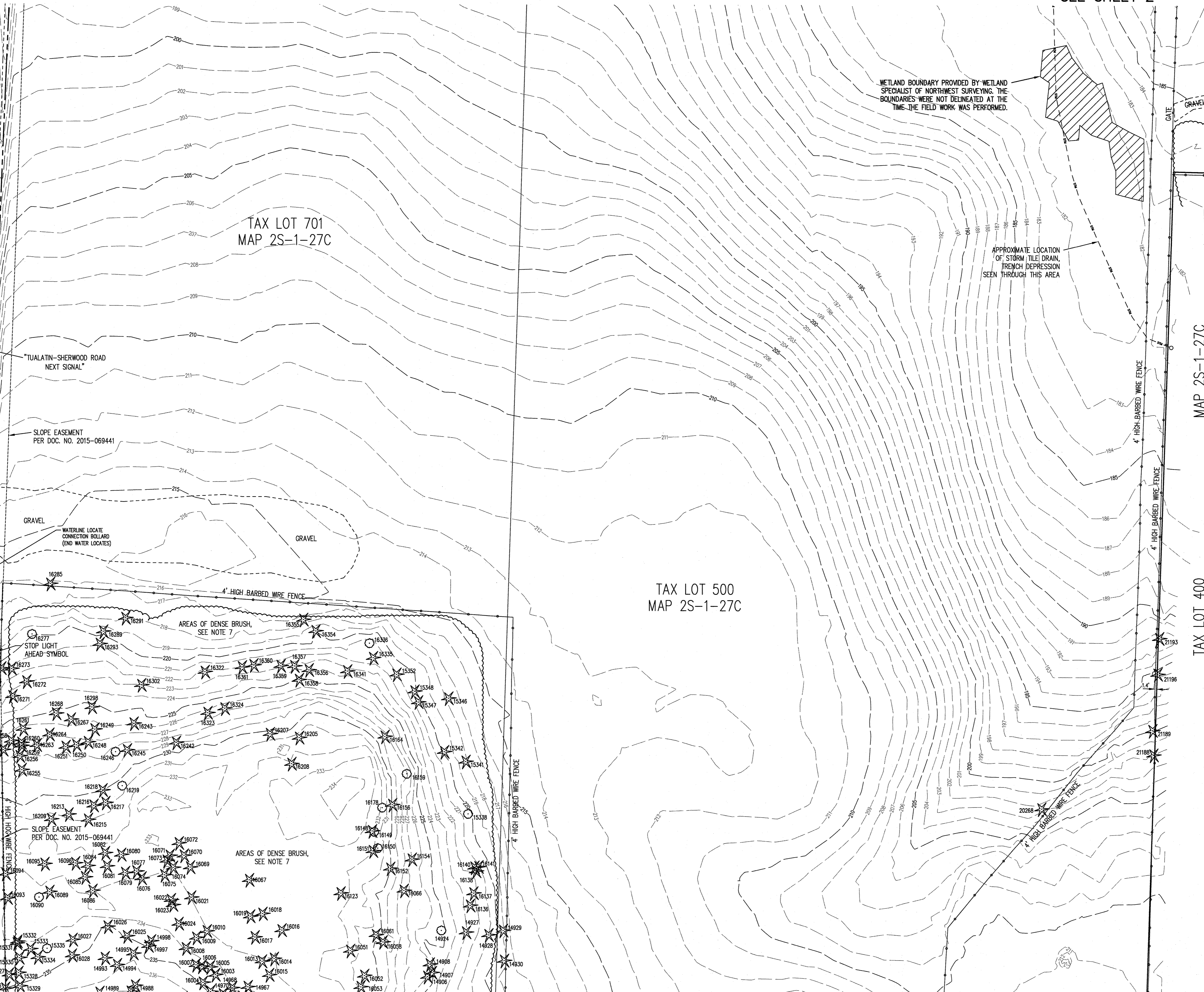
SEE SHEET 2

TAX LOT 701  
MAP 2S-1-27C

TAX LOT 500  
MAP 2S-1-27C

MAP 2S-1-27C

TAX LOT 400



SEE SHEET 6

SEE SHEET 6

**NORTHWEST SURVEYING, INC.**  
 1815 NW 169th PLACE, SUITE 2090  
 BEAVERTON, OR 97006  
 PH: (503) 848-2127 FAX: (503) 848-2179  
 EMAIL: nwsurveying@nwsvy.com

LOCATED IN THE SW 1/4 OF SECTION 27,  
 TOWNSHIP 2 SOUTH, RANGE 1 WEST, W.M.,  
 CITY OF TUALATIN,  
 WASHINGTON COUNTY, OREGON

**TOPOGRAPHIC SURVEY OREGON**  
 TUALATIN, OREGON  
 TAX LOTS 500 & 701  
 TAX MAP 2S-1-27C

DRAWING NO.: 1883 TOPO  
 SCALE: AS NOTED  
 DRAWING GENERATED BY: LD2004  
 DRAWN BY: CDW  
 CHECKED BY: CHS  
**PREPARED FOR:**  
 DREYFUSS+BLACKFORD ARCHITECTURE  
 3540 FOLSOM BOULEVARD  
 SACRAMENTO, CA 95816

REVISIONS:  
 INITIAL RELEASE: JAN. 16, 2019  
 UPDATE TREES: FEB. 18, 2019

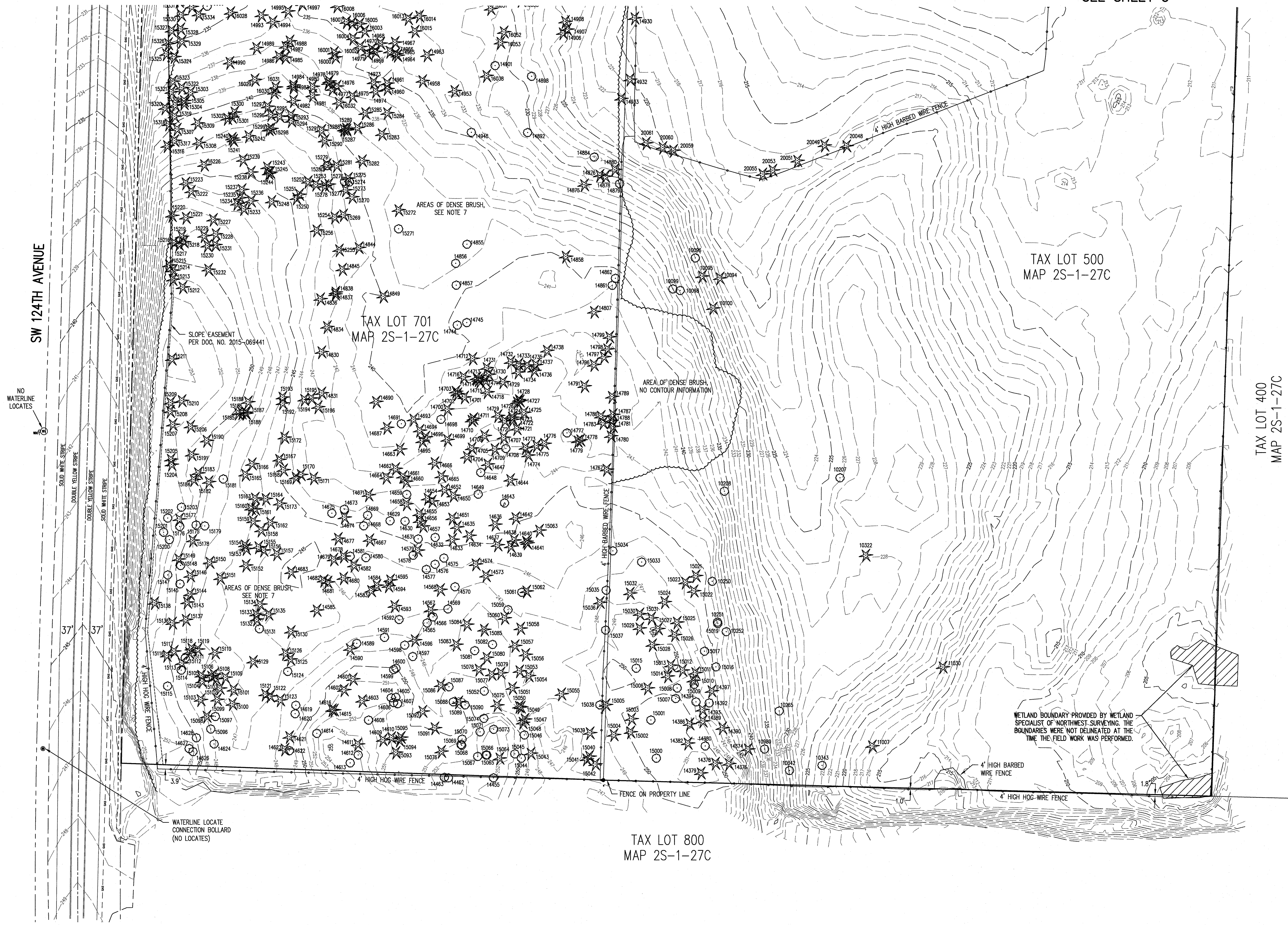
REGISTERED PROFESSIONAL LAND SURVEYOR  
  
 OREGON  
 JANUARY 15, 2002  
 CLINTON H. STUBBS JR.  
 55469LS  
 RENEWS: 06/30/20

JOB NUMBER  
**1883**

SHEET  
**5 OF 7**

SEE SHEET 5

SEE SHEET 5



**NORTHWEST SURVEYING, INC.**  
 1815 NW 16TH PLACE, SUITE 2090  
 BEAVERTON, OR 97006  
 PH: (503) 848-2127 FAX: (503) 848-2179  
 EMAIL: nwsurveying@nwsi.com

LOCATED IN THE SW 1/4 OF SECTION 27,  
 TOWNSHIP 2 SOUTH, RANGE 1 WEST, W.M.,  
 CITY OF TUALATIN,  
 WASHINGTON COUNTY, OREGON

**TOPOGRAPHIC SURVEY**  
**TUALATIN, OREGON**  
 TAX LOTS 500 & 701

DRAWING NO.: 1883 TOPO  
 SCALE: AS NOTED  
 DRAWING GENERATED BY: LD2004  
 DRAWN BY: CDW  
 CHECKED BY: CHS  
 PREPARED FOR:  
 DREYFUSS+BLACKFORD ARCHITECTURE  
 3540 FOLSOM BOULEVARD  
 SACRAMENTO, CA 95816

REVISIONS:  
 INITIAL RELEASE: JAN. 16, 2019  
 UPDATE TREES: FEB. 18, 2019

REGISTERED PROFESSIONAL LAND SURVEYOR  
  
 OREGON  
 JANUARY 15, 2002  
 CLINTON H. STUBBS JR.  
 55469LS  
 RENEWS: 06/30/20

JOB NUMBER  
**1883**  
 SHEET  
**6 OF 7**



## TREE INFORMATION

10094		BUCKTHORN			
10095		BUCKTHORN			
10096	14"	MADRONE			
10098	9"	DOGWOOD			
10099	14"	MADRONE			
10100	5"	FIR			
10207	14"	MADRONE			
10208	11"	DECIDUOUS			
10250	14"	MADRONE			
10251	14"	MADRONE			
10252	11"	MADRONE			
10265	SPLIT 14" & 16"	MADRONE			
10322	SPLIT 5" & 7"	FIR			
10342	SPLIT 12" & 17"	MADRONE			
10343	22"	MADRONE			
10980	7"	HOLLY			
10985	19"	MADRONE			
11007	SPLIT 2-6"	FIR			
11030	13"	FIR			
11382	13" (DEAD)	FIR			
11386	43"	FIR			
11424	SPLIT 6", 6", 8" & 2-11"	MAPLE			
12129	8"	HOLLY			
12134	8"	HOLLY			
12147	22"	HAWTHORN			
12149	16"	APPLE			
14374	14"	FIR			
14376	17"	FIR			
14378	18"	FIR			
14379	11"	FIR			
14380	20"	MADRONE			
14382	9"	FIR			
14386	11"	FIR			
14389	6"	FIR			
14390	17"	FIR			
14392	16"	MADRONE			
14393	6"	FIR			
14394	SPLIT 12" & 13"	MADRONE			
14397	8"	HOLLY			
14455	8"	MADRONE			
14462	10"	MADRONE			
14463	11"	MADRONE			
14565	9"	MADRONE			
14566	12"	MADRONE			
14567	6"	FIR			
14568	8"	FIR			
14569	16"	MADRONE			
14570	10"	MADRONE			
14573	6"	FIR			
14574	10"	MADRONE			
14575	6"	FIR			
14576	10"	MADRONE			
14577	6"	MADRONE			
14578	9"	MADRONE			
14579	10"	MADRONE			
14580	12"	MADRONE			
14581	9"	MADRONE			
14582	14"	FIR			
14583	7"	FIR			
14584	9"	FIR			
14585	10"	FIR			
14589	12"	MADRONE			
14590	15"	OAK			
14591	SPLIT 10" & 12"	MADRONE			
14592	7 10	MADRONE			
14593	11"	FIR			
14594	6"	FIR			
14595	7"	FIR			
14596	16"	FIR			
14597	10"	MADRONE			
14598	12"	MADRONE			
14599	SPLIT 7" & 10"	OAK			
14600	11"	OAK			
14601	8"	FIR			
14602	10"	FIR			
14603	9"	FIR			
14604	8"	MADRONE			
14605	6"	MADRONE			
14606	9"	MADRONE			
14607	SPLIT 6" & 10"	MADRONE			
14608	12"	MADRONE			
14609	6"	FIR			
14610	6"	FIR			
14611	11"	FIR			
14612	SPLIT 9" & 13"	MADRONE			
14613	12"	MADRONE			
14614	13"	MADRONE			
14615	6"	FIR			
14616	9"	FIR			
14617	12"	MADRONE			
14618	10"	FIR			
14619	9"	FIR			
14620	13"	MADRONE			
14621	8"	FIR			
14622	12"	MADRONE			
14623	6"	BUCKTHORN			
14624	12"	MADRONE			
14626	14"	MADRONE			
14627	7"	MADRONE			
14628	10"	MADRONE			
14629	9"	MADRONE			
14630	SPLIT 2-10"	MADRONE			
14631	10"	MADRONE			
14632	13"	MADRONE			
14633	6"	FIR			
14634	7"	FIR			
14635	8"	FIR			
14636	10"	FIR			
14637	8"	FIR			
14638	SPLIT 6" & 8"	FIR			
14639	7"	FIR			
14640	7"	FIR			
14641	6"	FIR			
14642	8"	FIR			
14643	18"	MADRONE			
14644	4"	FIR			
14647	7"	FIR			
14648	13"	MADRONE			
14649	15"	MADRONE			
14650	6"	FIR			
14651	6"	FIR			
14652	10"	FIR			
14653	8"	FIR			
14654	9"	FIR			
14655	7"	FIR			
14656	7"	FIR			
14657	10"	FIR			
14658	8"	FIR			
14659	13"	MADRONE			
14660	10"	FIR			
14661	6"	FIR			
14662	8"	FIR			
14663	10"	FIR			
14664	9"	FIR			
14665	11"	FIR			
14666	8"	FIR			
14667	7"	FIR			
14668	11"	MADRONE			
14669	10"	MADRONE			
14671	7"	FIR			
14673	6"	MADRONE			
14674	6"	FIR			
14675	10"	MADRONE			
14677	8"	FIR			
14678	6"	FIR			
14679	9"	FIR			
14680	8"	FIR			
14681	7"	FIR			
14682	7"	FIR			
14683	6"	FIR			
14687	6"	BUCKTHORN			
14690	6"	FIR			
14691	12"	BIRCH			
14693	7"	FIR			
14694	7"	FIR			
14695	9"	FIR			
14696	9"	FIR			
14698	SPLIT 5", 6" & 7"	MADRONE			
14699	9"	FIR			
14700	7 10	MADRONE			
14701	8"	FIR			
14702	6"	FIR			
14703	9"	FIR			
14704	7"	FIR			
14705	7"	FIR			
14706	6"	FIR			
14707	9"	FIR			
14708	9"	MADRONE			
14709	6"	FIR			
14710	10"	FIR			
14711	7"	FIR			
14712	8"	FIR			
14713	6"	FIR			
14714	7"	FIR			
14715	7"	FIR			
14716	9"	FIR			
14717	6"	FIR			
14718	10"	FIR			
14719	10"	FIR			
14720	7"	FIR			
14721	10"	FIR			
14722	6"	WILLOW			
14723	9"	FIR			
14724	7"	FIR			
14725	11"	FIR			
14726	6"	FIR			
14727	10"	FIR			
14728	7"	FIR			
14729	8"	FIR			
14730	6"	FIR			
14731	10"	FIR			
14732	10"	FIR			
14733	7"	FIR			
14734	10"	FIR			
14735	9"	FIR			
14736	8"	FIR			
14737	13"	FIR			
14738	14"	FIR			
14744	9"	MADRONE			
14745	SPLIT 7" & 12"	MADRONE			
14767	13"	FIR			
14773	7"	FIR			
14774	SPLIT 6" & 7"	FIR			
14776	8"	FIR			
14778	14"	MAPLE			
14779	11"	FIR			
14780	6"	FIR			
14781	12"	FIR			
14783	11"	FIR			
14786	9"	FIR			
14787	10"	FIR			
14788	9"	FIR			
14789	11"	FIR			
14791	15"	FIR			
14796	13"	FIR			
14797	15"	FIR			
14798	7"	FIR			
14799	6"	FIR			
14807	11"	MADRONE			
14830	13"	FIR			
14831	6"	FIR			
14834	15"	FIR			
14836	10"	FIR			
14837	11"	FIR			
14838	14"	FIR			
14844	8"	FIR			
14845	11"	FIR			
14849	SPLIT 15" & 22"	OAK			
14855	9"	MADRONE			
14856	12"	MADRONE			
14857	7"	MADRONE			
14858	13"	FIR			
14861	11"	MADRONE			
14862	11"	MADRONE			
14875	9"	FIR			
14876	7"	FIR			
14878	6"	FIR			
14879	13"	MADRONE			
14880	21"	FIR			
14884	8"	OAK			
14892	13"	MADRONE			
14898	8"	MAPLE			
14901	SPLIT 8" & 10"	WILLOW			
14906	SPLIT 6" & 14"	MADRONE			
14907	13"	FIR			
14908	SPLIT 6" & 11"	FIR			
14924	17"	WILLOW			
14927	15"	FIR			
14928	11"	FIR			
14929	18"	FIR			
14930	17"	FIR			
14932	16"	FIR			
14933	24"	FIR			
14948	SPLIT 6", 7" & 8"	MADRONE			
14953	17"	FIR			
14958	12"	FIR			
14960	13"	FIR			
14961	8"	FIR			
14963	17"	FIR			
14964	9"	FIR			
14965	10"	FIR			
14966	6"	FIR			
14967	13"	FIR			
14968	10"	FIR			
14969	11"	FIR			
14970	6"	FIR			
14971	10"	FIR			
14973	13"	FIR			
14974	11"	FIR			
14975	10"	FIR			
14976	7"	FIR			
14977	7"	FIR			
14978	6"	FIR			
14979	SPLIT 2-6"	FIR			
14980	9"	FIR			
14981	12"	FIR			
14982	11"	FIR			
14983	6"	FIR			
14984	8"	FIR			
14985	12"	FIR			
14986	9"	FIR			
14987	6"	FIR			
14988	9"	FIR			
14989	12"	FIR			
14990	14"	FIR			
14993	12"	FIR			
14994	10"	FIR			
14995	12"	FIR			
14997	10"	FIR			
14998	11"	FIR			
15000	11"	MADRONE			
15001	21"	OAK			
15002	6"	FIR			
15003	6"	PINE			
15004	6"	PINE			
15005	23"	FIR			
15006	10"	FIR			
15007	SPLIT 7" & 16"	MADRONE			
15008	SPLIT 6" & 16"	MADRONE			
15009	8"	MADRONE			
15010	6"	FIR			
15011	6"	FIR			
15012	6"	FIR			
15013	13"	FIR			