



**Tualatin Food
Pantry**

About US

Tualatin Food Pantry (TFP) is a community organized food bank and is a Partner Agency of the Oregon Food Bank.

We operate with a staff of 2.4 FTE and a dedicated team of regular and occasional volunteers. The Pantry is overseen by a 5-person Board of Directors.

We have a 5,600 square foot space in the lower-level of the Rolling Hills Community Church.

In 2025, we served nearly 50,000 food insecure neighbors. More than 24,000 were from Tualatin.

About US

Clients can access our services twice in a calendar month. This is in addition to any bonus events that we may have such as Holiday Food Boxes.

Due to increased demand, TFP now serves clients 4 days per week for a total of 15 hours. Volunteers are on site 5 days and contribute over 950 volunteer hours per month.

Clients receive about 5 days worth of food and personal supplies. We are one of the few pantries in the area that routinely stocks milk, eggs, frozen meats and foods, and cooler items.

It is our goal that during each visit each family will receive milk, frozen meat, and eggs.

The Client Experience

We are considered a low-barrier service provider. Do not need to show proof of income or residency to receive services.

Clients' check-in for our volunteer coordinator. If it's their first visit, a profile will be created.

Clients have the option to shop in-person in our Pantry (like a grocery store) or pick-up a pre-packed box. All pre-packed boxes, contain the same items that are available in Pantry.

The Client Experience

Clients are provided a shopping cart and a color-coded family size paper. Each section of the Pantry allocates items based on family size.

The Pantry is laid out similar to a grocery store – produce, bread, canned goods are sorted by food category, etc. This allows us to provide clients with a similar experience as to shopping at a store while helping keep the Pantry organized.

Volunteers are stationed throughout the Pantry to answer questions and re-stock shelves.

Walk-in Upgrade

Thanks to support from **Mayor Bubenik** and the **City of Tualatin**, TFP was able to secure grant funding from **Clackamas County** to upgrade our walk-in freezer and refrigerator.

Installed in late March the units feature more space (4 ft longer & 4 ft wider), brighter lights, an additional shopping door, wider shopping doors, and a dedicated excess door for each unit. These units have made a noticeable difference to our volunteers and shoppers!

And more importantly give TFP the space to continue to respond to the expanded need in the community.

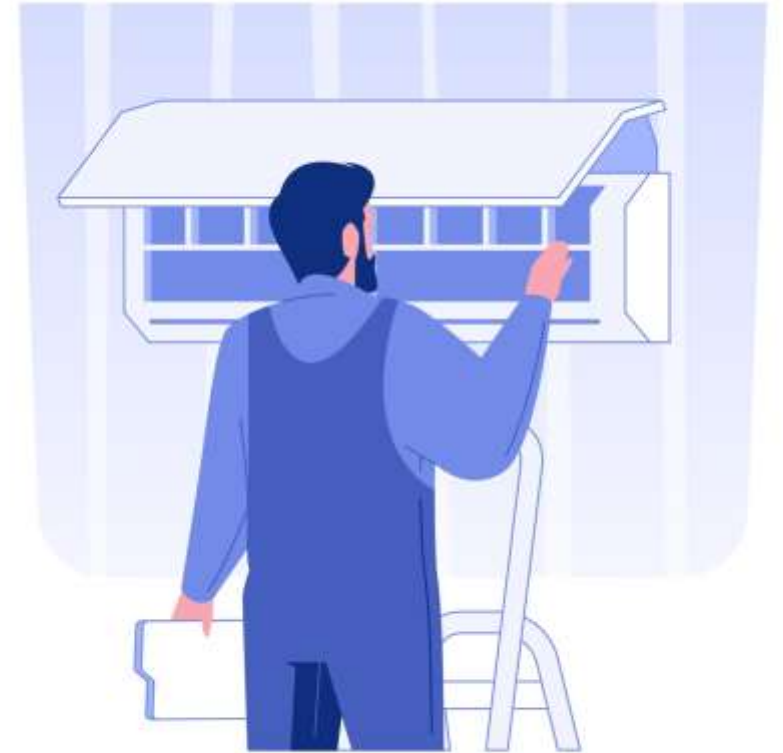


HVAC Installation

TFP is continuing to work through the process to install HVAC in our space. We are waiting for the final permits and hope to have the process started by mid-April.

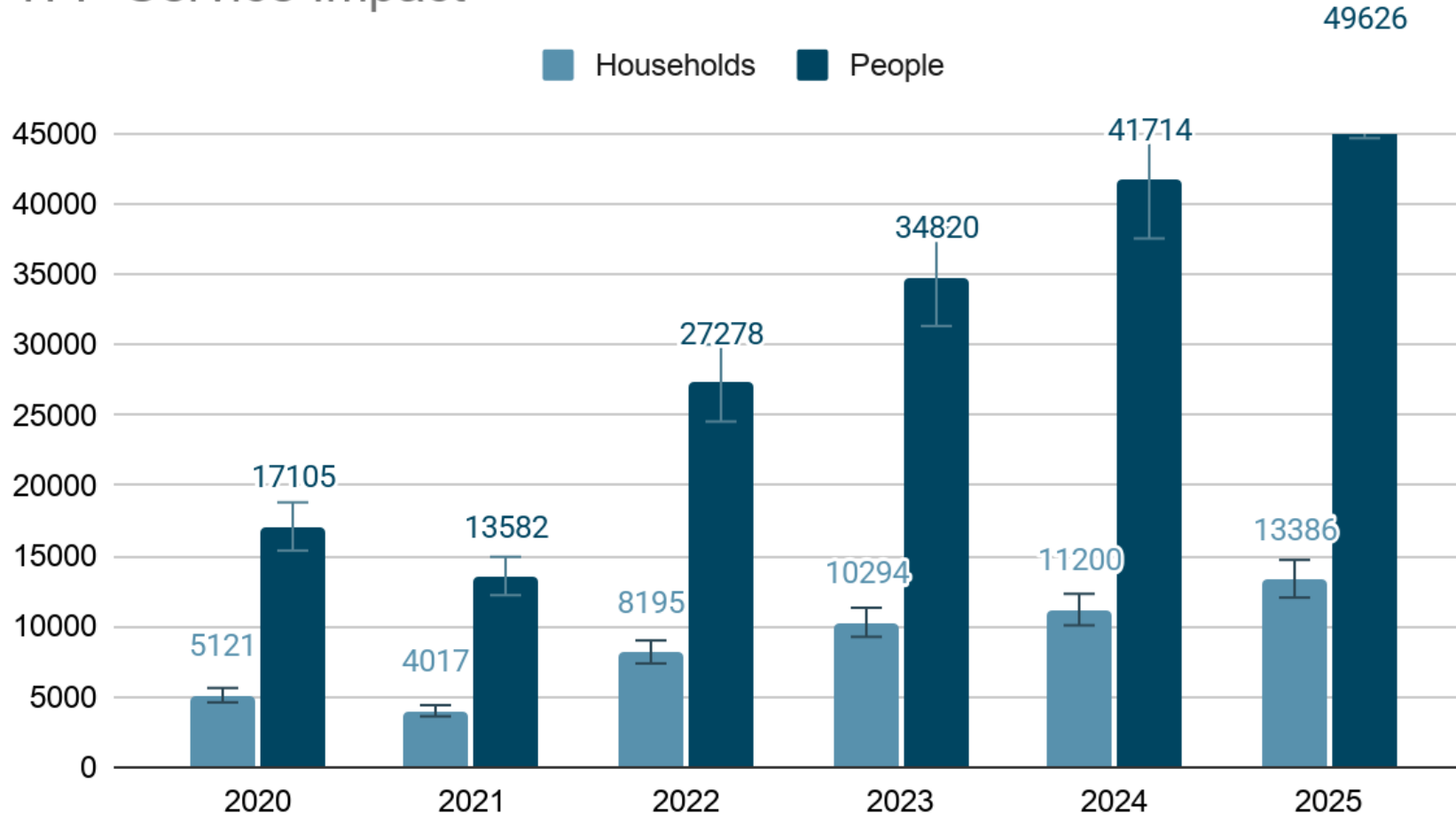
Thanks to support from **Mayor Bubenik** and the **City of Tualatin**, our HVAC installation is also funded by **Clackamas County**.

The new system will allow for climate control making for a more comfortable environment for our clients, volunteers, and staff. As well as extending the life of our produce and the useful life of our freezers and refrigerators.



Households vs Clients served

TFP Service Impact



Our Q1 2025 trends show that we are serving over 1,050 households per month (over 4,000 people).

Where Our Food Comes From



Oregon Food Bank



Grocery Store Donations



Community Food Drives/Donations



Locally Grown Produce



Purchased



How You Can Help

Share our posts.

Volunteer your time.

Organize a
food drive.

Make a tax-deductible
donation.



Thank you!

Questions:
danielle@tualatinfoodpantry.org