

The Family Peace Center of Washington County

Coming January 2026

TFAMILY PEACE CENTER OF WASHINGTON COUNTY OGETHER,

DRO

Disability
Rights
Oregon

SARC
SEXUAL ASSAULT RESOURCE CENTER



Oregon
Law Center
WORKING TOGETHER TO ACHIEVE JUSTICE FOR LOW INCOME OREGONIANS



DOMESTIC VIOLENCE
RESOURCE
CENTER

Family SkillBuilders
Customized Services for Stronger Families

AbuseRecovery
MINISTRY SERVICES

CommunityAction
Helping people. Changing lives.



OREGON DEPARTMENT OF
Human Services



Ride
CONNECTION



SAFETY
COMPASS



SHERIFF
WASHINGTON COUNTY



Providence



cares
northwest

The Family Peace Center will assemble more than 20 partner organizations under one roof to deliver wraparound services, from emergency medical care to long-term housing and mental health support.

Survivors and their children will also access specialized support for youth experiencing human trafficking, legal aid, onsite childcare and play areas, private counseling, and welcoming spaces for healing and connection.

+

•

○

Justice System Partners

- **Washington County Circuit Court** – Onsite judicial referee, court staff, and two courtrooms providing expanded proceedings and paperwork filing in a safe, survivor-centered setting.
- **Washington County District Attorney's Office** – Onsite domestic violence unit providing prosecution, victim support, and grand jury hearings in collaboration with law enforcement.
- **Washington County Sheriff's Office** – Specialized detective response, reporting, and follow up.
- **Beaverton Police Department** – Law enforcement response, investigations, and system-based advocacy.
- **Hillsboro Police Department** – Law enforcement response, investigations, and system-based advocacy.

+

•

○

Medical and Forensic Care

- **CARES Northwest** – Forensic medical evaluations, trauma therapy, and family support for child abuse victims; prevention education for the community.
- **Providence Health and Services / Providence Safe Center** – Acute and follow-up medical and forensic care for adult survivors of sexual assault, physical assault, and strangulation.

+

•

○

Legal Aid

- **Oregon Law Center** – Civil legal services including housing, employment, and benefits advocacy for survivors.
- **Oregon Crime Victims Law Center** – Legal advocacy to protect crime victims' rights and support survivors navigating the justice system.
- **St. Andrew Legal Clinic** – Affordable family law services, including custody and protective order representation.
- **Disability Rights Oregon** – Advocacy and legal support for survivors with disabilities to ensure equal access to services and protections.

+

•

○

Survivor Advocacy & Crisis Support

- **Domestic Violence Resource Center (DVRC)** – Advocacy, counseling, housing support, and safety planning for survivors of domestic violence.
- **Sexual Assault Resource Center (SARC)** – 24/7 crisis response, advocacy, and housing support for sexual assault survivors.
- **Safety Compass** – Specialized advocacy and case management for survivors of sex trafficking and exploitation.
- **VOICES Survivor Leadership Committee** – Survivor-led advisory group ensuring design, policies, and services reflect lived experience.

+

•

○

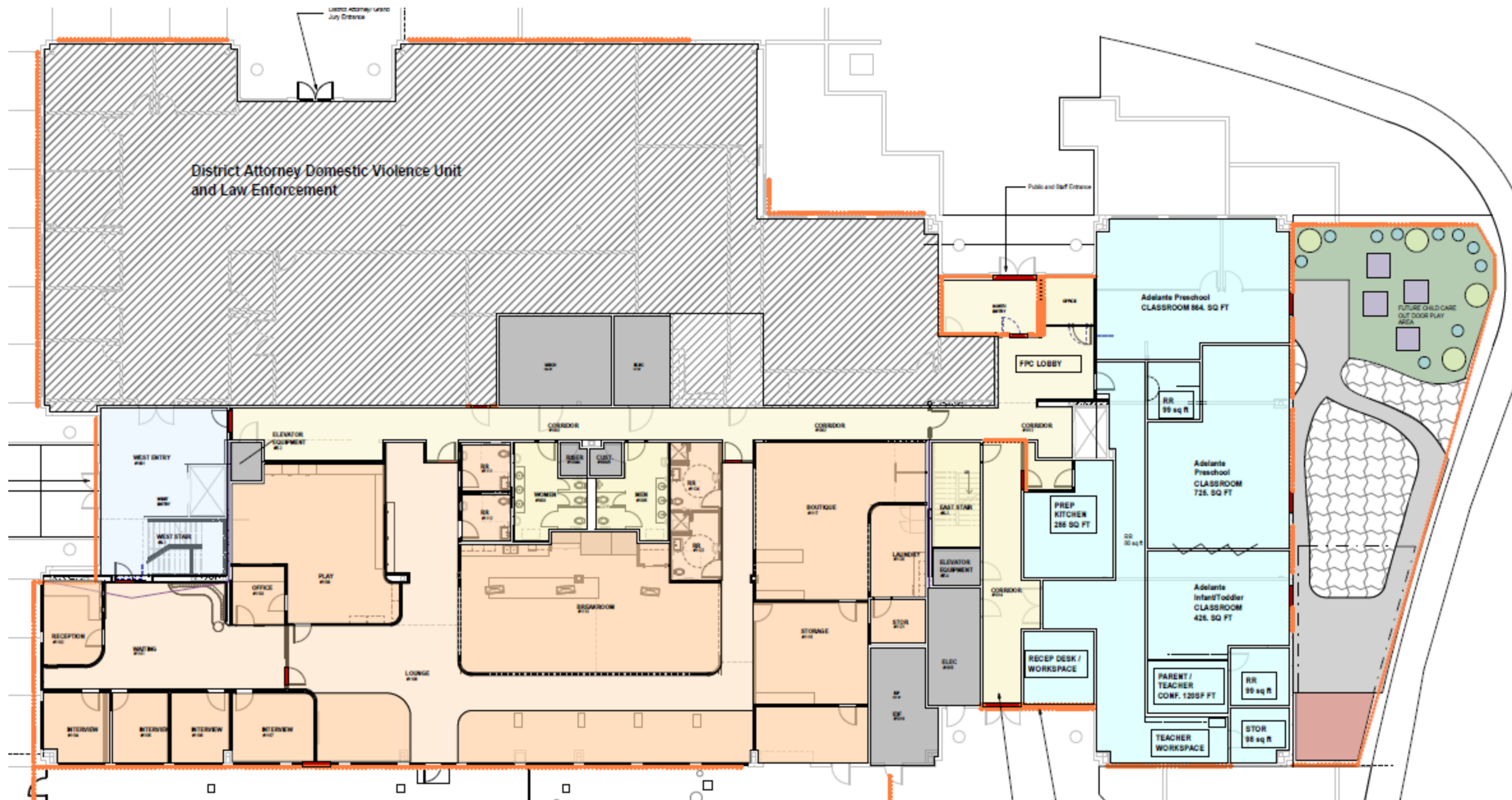
Child & Youth Services

- **Adelante Mujeres** – Bilingual therapeutic preschool providing trauma-informed early education for children who have experienced or witnessed violence, with culturally responsive support for Latine families.
- **A Village for One** – Long-term support and therapeutic services for youth survivors of sexual exploitation and trafficking.
- **Family SkillBuilders** – Parent education, skill development, and child welfare-related family support.

+

-
- # Housing, Economic Stability & Basic Needs

- **Community Action** – Rent and utility assistance, eviction prevention, and housing assessments.
- **Department of Human Services (DHS)** – Enrollment in economic support programs such as SNAP and TANF and domestic violence financial assistance.
- **Oregon Food Bank** – Stocks the Family Grocery Store within the Family Peace Center, ensuring survivors and their families have access to nutritious food.
- **Ride Connection** – Door-to-door, non-emergency transportation for survivors, especially those in rural areas, to access the Family Peace Center.











Where?

Building:

- 1100 NE Compton Dr. Hillsboro
- **Bus:** NE Walker & Stucki Bus Stop
- **Max:** Quatama Stop Blue or Red Line

Phone

- **503-430-8300**

Website

- www.fpcwc.org

