

Plambeck Gardens

Rachael Duke, Executive Director
Katherine Moore, Director of Programs





Agenda

- Thank City Council for Support
 - Building Plambeck Gardens
 - Today, a conversation about the City of Tualatin's Outside Agency Grant
- Update on Building (BRIEF)
- Update on Resident Services
 - Overall approach
 - Permanent Support Housing

City of Tualatin

THANK YOU!

- Land use process, including neighbor relations and sewer negotiation
- Resources for building: One million for infrastructure
- Advocating for students (high school students will have the opportunity to attend Tualatin High if desired)
- Tonight – for support for the City of Tualatin’s Outside Agency Grant – supporting CPAH’s efforts to welcome new residents with move-in essentials.





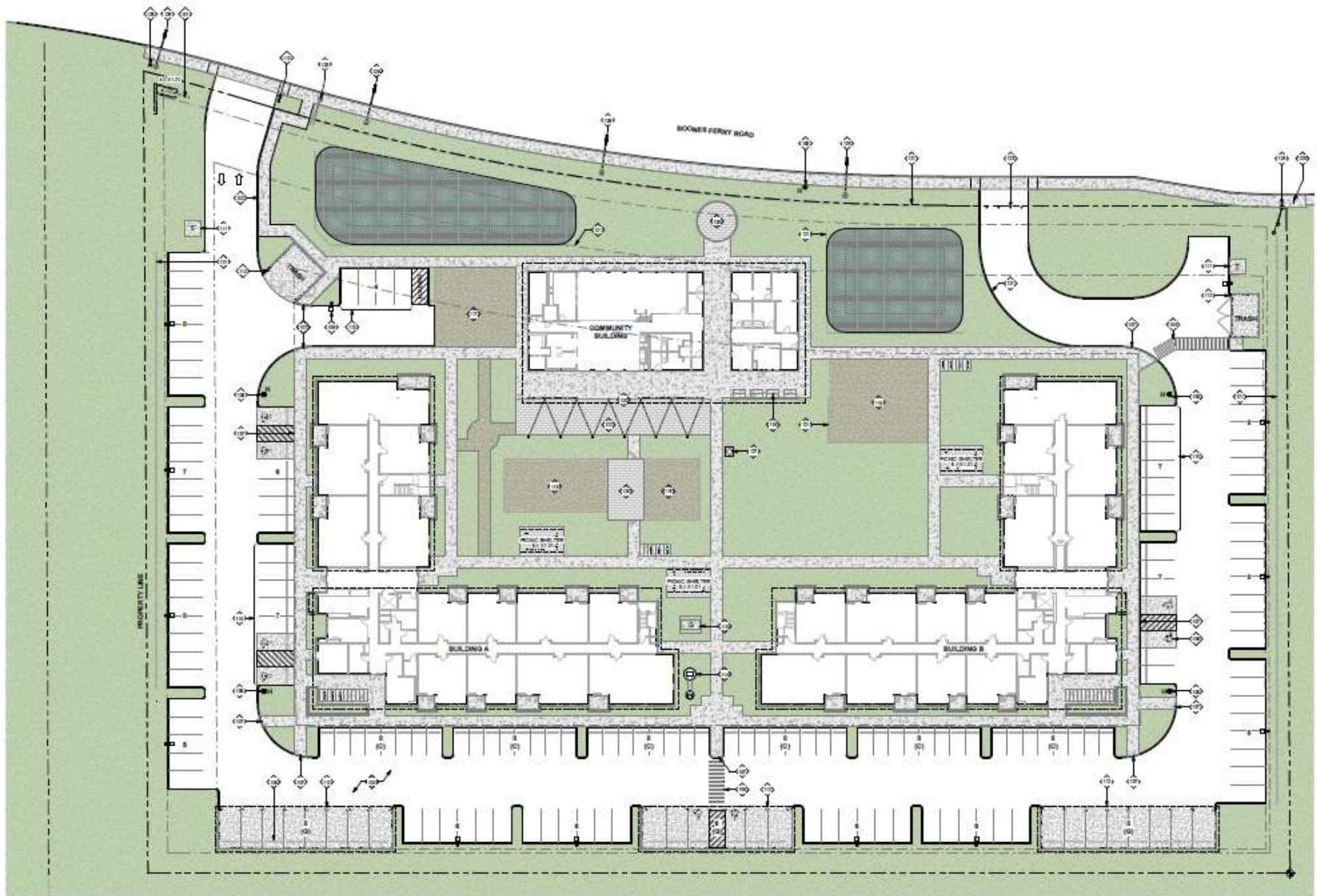
Property Details

- Timeline
 - Annexed into the City in early 2021
 - Permitting applications submitted early 2022
 - Construction begins early 2023
 - Leasing in Process late 2024
 - First residents moving in during January 2025
 - Second building open this spring
 - Both buildings leased by summer
- Units
 - All units below 60% AMI
 - 16 with vouchers (resident pays 30% of income)
 - 54 one -bedrooms
 - 40 two- bedrooms, 16 three-bedrooms, 6 four-bedrooms

Services

- **Resident Services for all households – 116 homes – including**
 - **Housing stability and eviction prevention**
 - **Community Building**
 - **Workforce services**
 - **Health Services**
 - **Youth Services**
- **Permanent Supportive Housing- 16 homes**
 - **Community Action providing wrap-around case management**
- **Partners**
 - **Community Action for PSH**
 - **Lifeworks**
 - **Centro Cultural**
 - **Neighborhood Health Center**
 - **There will be more**







Thanks you!