



ADOPTION READY MASTER PLANS

*Tualatin City Council
August 12, 2024*

Presented by: Erin Engman, Senior Planner
Steve Koper, Assistant Community Development
Director

Brown and Caldwell

Prepared for City of Tualatin Oregon

City of Tualatin

Stormwater Master Plan

April 2019 | DRAFT-FINAL



CITY OF TUALATIN

Basalt Creek

PARKS & RECREATION PLAN

AGENDA

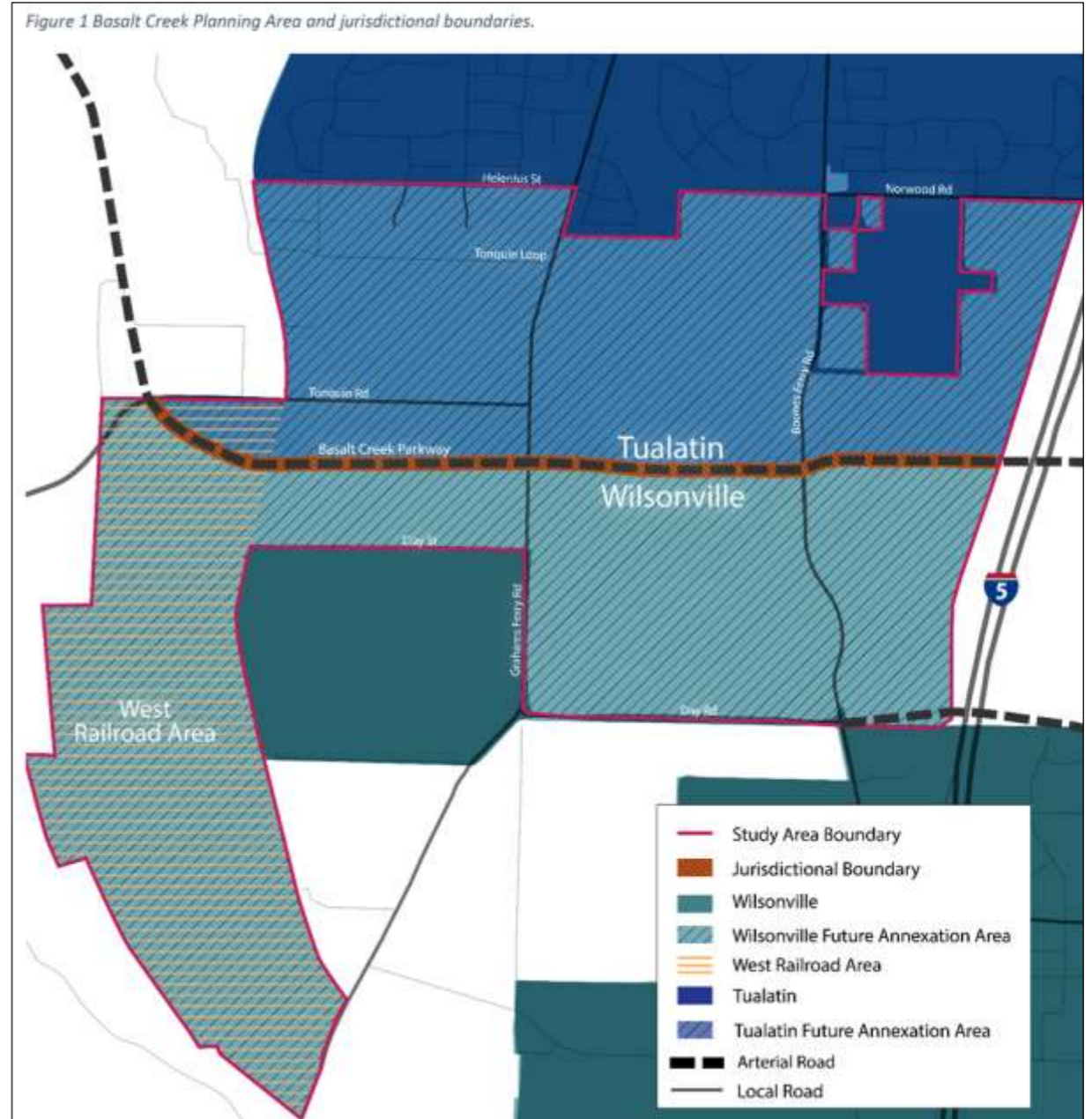
- Background and Summary
- Overview of Amendments
- Approval Criteria
- Planning Commission Recommendation



MASTER PLANS

Why adopt these master plans?

- Guide physical, economic, and social transformation over the next 20+ years
- Ensure identified projects become eligible for grant funding
- Replace an outdated plan
- Complete the City's long-range planning efforts in the Basalt Creek Planning Area



STORMWATER MASTER PLAN

What does it do?

- Replaces an outdated plan from 1972.
- Provides an assessment of existing conditions and assets.
- Identifies Capital Improvement Plan projects. Adoption necessary to be eligible for grant funding.
- Identifies areas that require a “sub-basin strategy” to address unique needs through application of enhanced standards.



STORMWATER MASTER PLAN

Previous Consideration

- February 8, 2021: Council adopted the updated Stormwater Master Plan (Ord. 1453-21).
- March 8, 2021: In response to public testimony requesting a stormwater management approach specific to the Basalt Creek area, Council repealed the Stormwater Master Plan (Ord. 1455-21) and directed staff to develop a stormwater management approach specific to the Basalt Creek Planning Area.

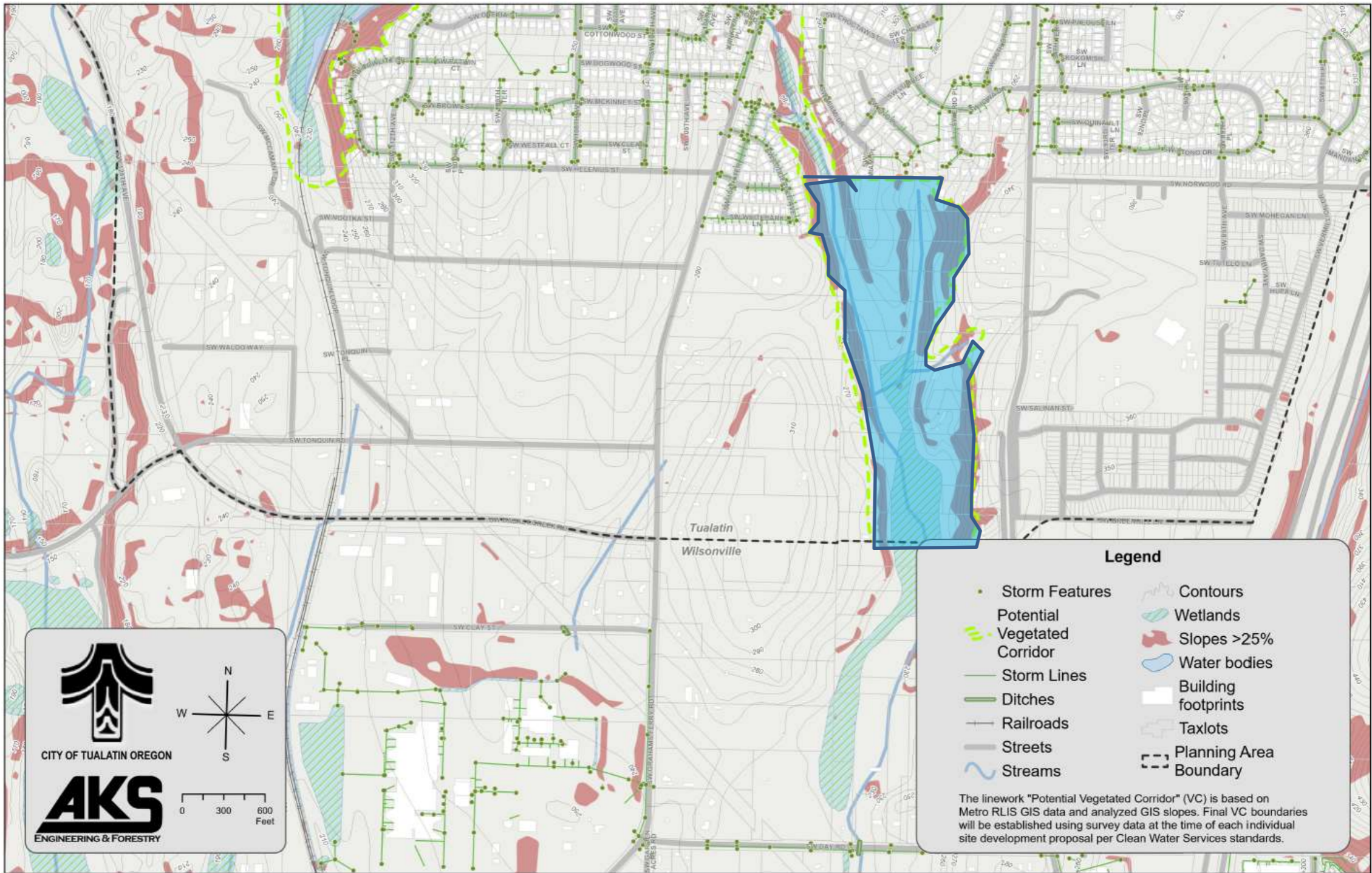


STORMWATER MASTER PLAN

Work done since 2021

- 2021-2022: The City worked with Brown & Caldwell to study the existing conditions in the Basalt Creek area.
- September 2023: The City engaged AKS to produce maps that show existing and potential stormwater facilities; and existing natural resource areas within the Basalt Creek planning area.
- An addendum was created to require more stringent stormwater standards in the Basalt Creek area.

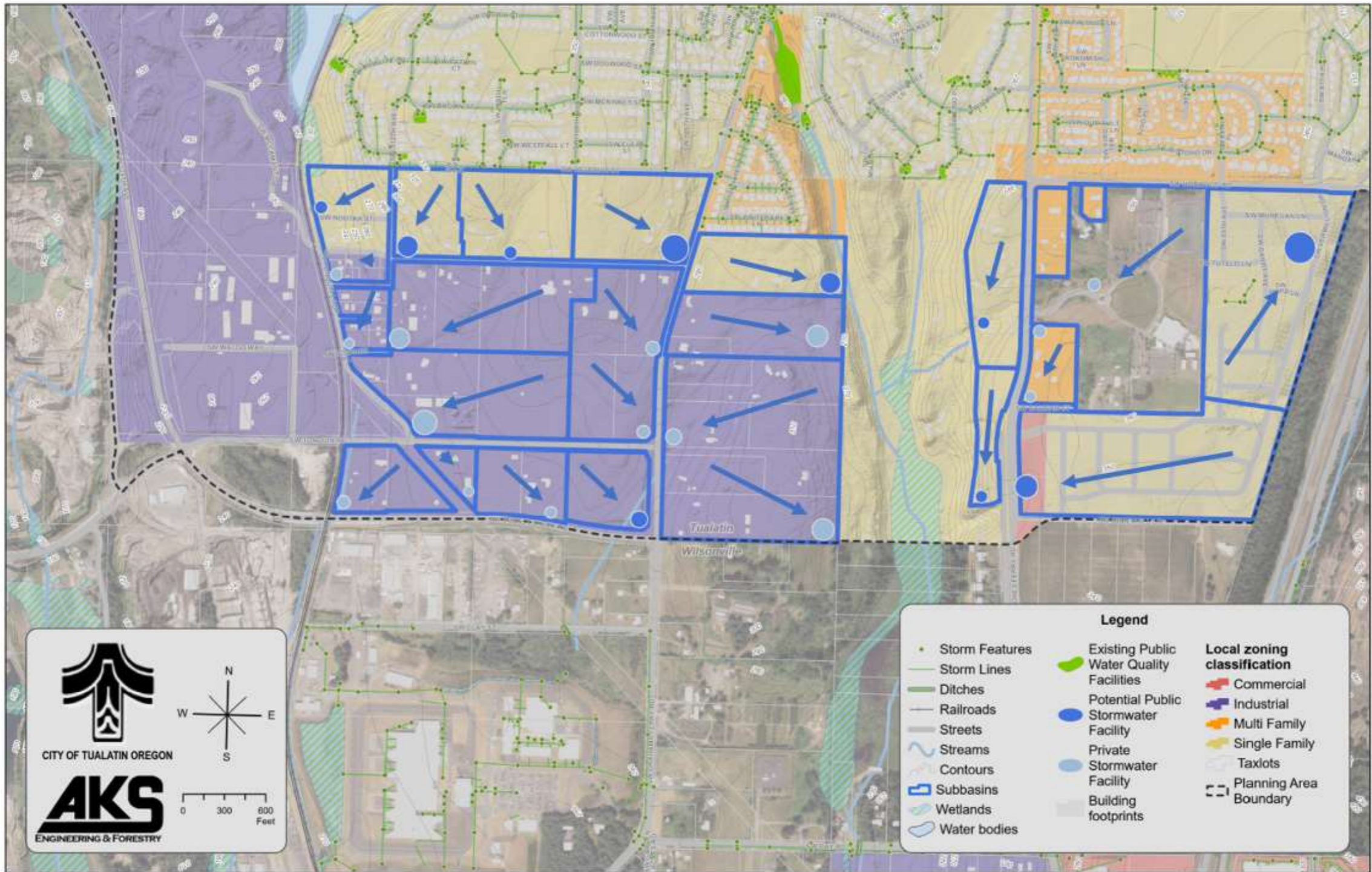




CITY OF TUALATIN OREGON

AKS
ENGINEERING & FORESTRY

0 300 600 Feet



STORMWATER FACILITY EXAMPLES



Underground Injection Control



Vegetated Swale

STORMWATER MASTER PLAN

Addendum Conclusion

- Requires the most stringent stormwater standards in the Basalt Creek sub-basin:
 - Hydro-modification
 - 25-Year storm event
- Existing environmental regulations in Tualatin Development Code & Clean Water Services standards will limit development in environmentally sensitive areas



B.C. PARKS & REC PLAN

What does it do?

- Completes park planning effort in Basalt Creek area centered on community engagement
- Identifies parks and recreation investments and estimated costs
- Identifies steps towards implementation



B.C. PARKS & REC PLAN

Previous Work

- 2019: The Parks and Recreation Master Plan was adopted under Ordinance 1427-19. This plan identified the need for park and trail planning in the Basalt Creek planning area.
- 2022: In response to this need, and after significant public involvement, the Basalt Creek Parks and Recreation Plan was created. This work was accepted by Council under Resolution 5593-22.



AMENDMENTS

PTA/PMA24-0003

- Adopt plans as a supporting technical documents to the Tualatin Comprehensive Plan;
- Update Chapter 9 policies specific to stormwater management practices;
- Add Map 9-3 Stormwater Plan;
- Amend Map 8-4 and 72-2 consistent with the Basalt Creek Parks and Recreation Plan;
- Update corresponding references in the Municipal & Development Codes.



TEXT AMENDMENTS

CHAPTER 9 - PUBLIC FACILITIES AND SERVICES

[...]

~~DRAINAGE PLAN AND SURFACE WATER MANAGEMENT~~ STORMWATER MANAGEMENT

The Stormwater Master Plan (2019) is adopted as a background document to the Comprehensive Plan as seen in Part II. Capital projects and related information is contained in the Stormwater Master Plan. The Plan supports regulatory directives under Clean Water Services (CWS).

[...]

Policy 9.3.1 Coordinate the City's ~~Drainage Plan and~~ Stormwater Management regulations with the City's Floodplain District, Wetland Protection District and Natural Resource Protection Overlay District regulations, and with the plans of USA Clean Water Services and other regional, state, and federal agencies to achieve consistency among the plans.

Policy 9.3.2 Protect areas of the city with observed and/or reported instream erosion and hydromodification risk by requiring development to implement controls related to flow control.

Policy 9.3.3 Increase water quality treatment throughout the City by expanding treatment area coverage through water quality retrofits and enhancing the level of treatment provided. Continue working with state and regional agencies on surface water management and water quality. Reduce sediment and other pollutants reaching the public storm and surface water system by implementing the Oregon Department of Environmental Quality (DEQ) and USA requirements for surface water management and water quality in the Tualatin River basin. Reduce soil erosion, manage surface water runoff and improve surface water quality.

[...]

Policy 9.3.10 ~~Require new development to provide onsite pollution reduction facilities when necessary to treat stormwater runoff prior to entering Hedges Creek and protect the marsh from urban stormwater pollutants.~~

[...]

Policy 9.3.13 ~~Restrict beaver dam activity in the Wetland Protected Area marsh to retain the drainage flow through the marsh area and to reduce flooding between Teton Avenue and Tualatin Road. Implement beaver management techniques to selectively encourage/discourage beaver activity based on the characteristics of the stormwater drainage systems, topography, and vegetation.~~

Policy 9.3.14 ~~As outlined in the HCS Plan, the City will a~~ Coordinate with Clean Water Services CWS with non-structural activities including to implement public education programs and water quality and management activity monitoring.

[...]

Policy 9.3.16 Develop and support a program for continual public water quality facility maintenance, including both routine maintenance and larger system restoration and redesign as needed.

Policy 9.3.17 Validate and construct water quality retrofits, prioritizing project opportunities based on annual inspection efforts.

[...]

CHAPTER 72 NATURAL RESOURCE PROTECTION OVERLAY DISTRICT (NRPO)

TDC 72.056. - **Vegetated Corridors of Sensitive Areas.**

Lands subject to these regulations are also subject to the regulations in Clean Water Services' the Unified Sewage Agency's Design and Construction Standards.

CHAPTER 74 PUBLIC IMPROVEMENT REQUIREMENTS

TDC 74.630. - Storm Drainage System.

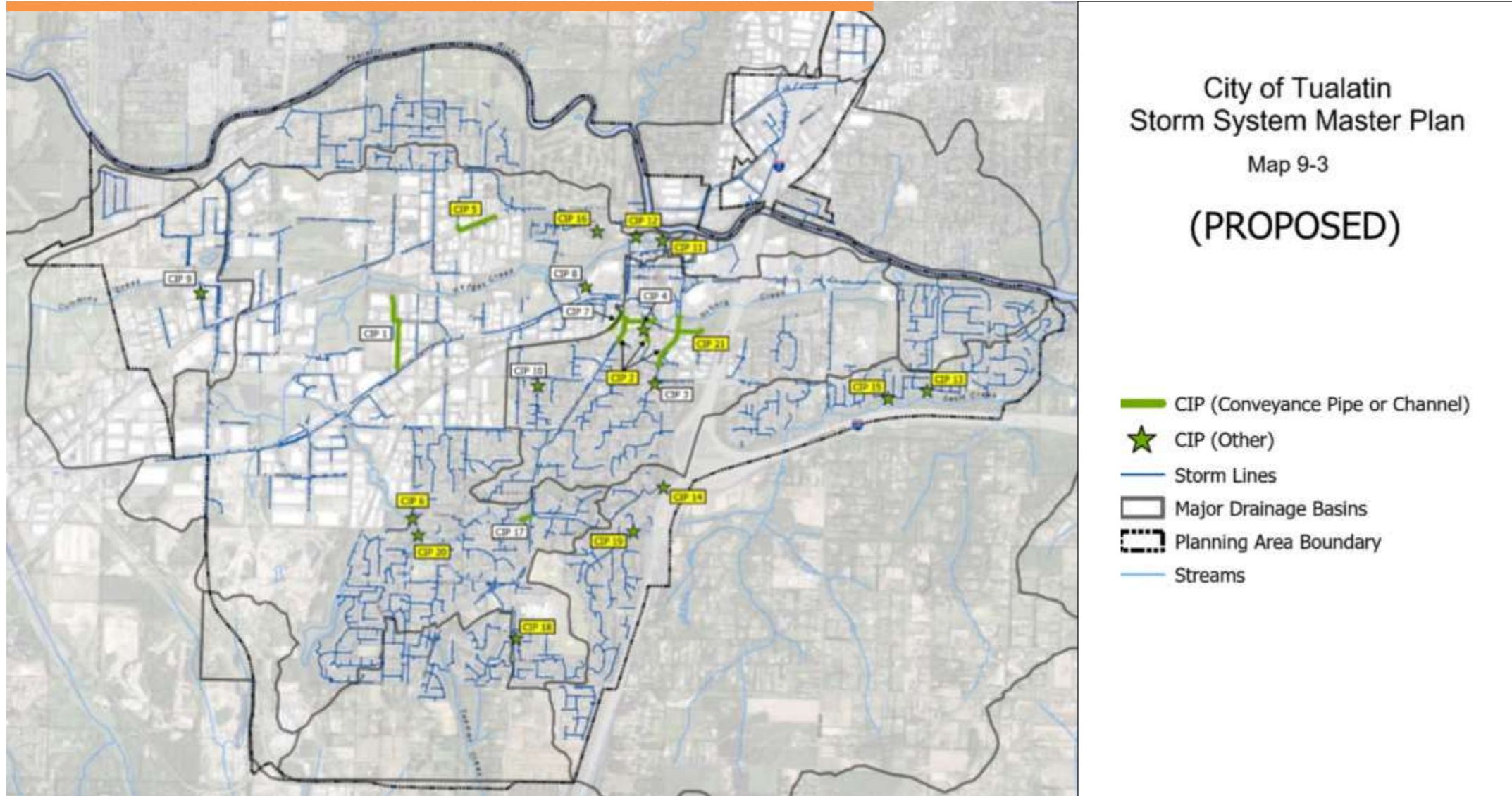
[...]

- (3) If there are undeveloped properties adjacent to the proposed development site which can be served by the storm drainage system on the proposed development site, the applicant must extend storm drainage lines to the common boundary line with these properties. The lines must be sized to convey expected flows to include all future development from all up stream areas that will drain through the lines on the site, in accordance with the adopted Stormwater Master Tualatin Drainage Plan in TDC Chapter 14.

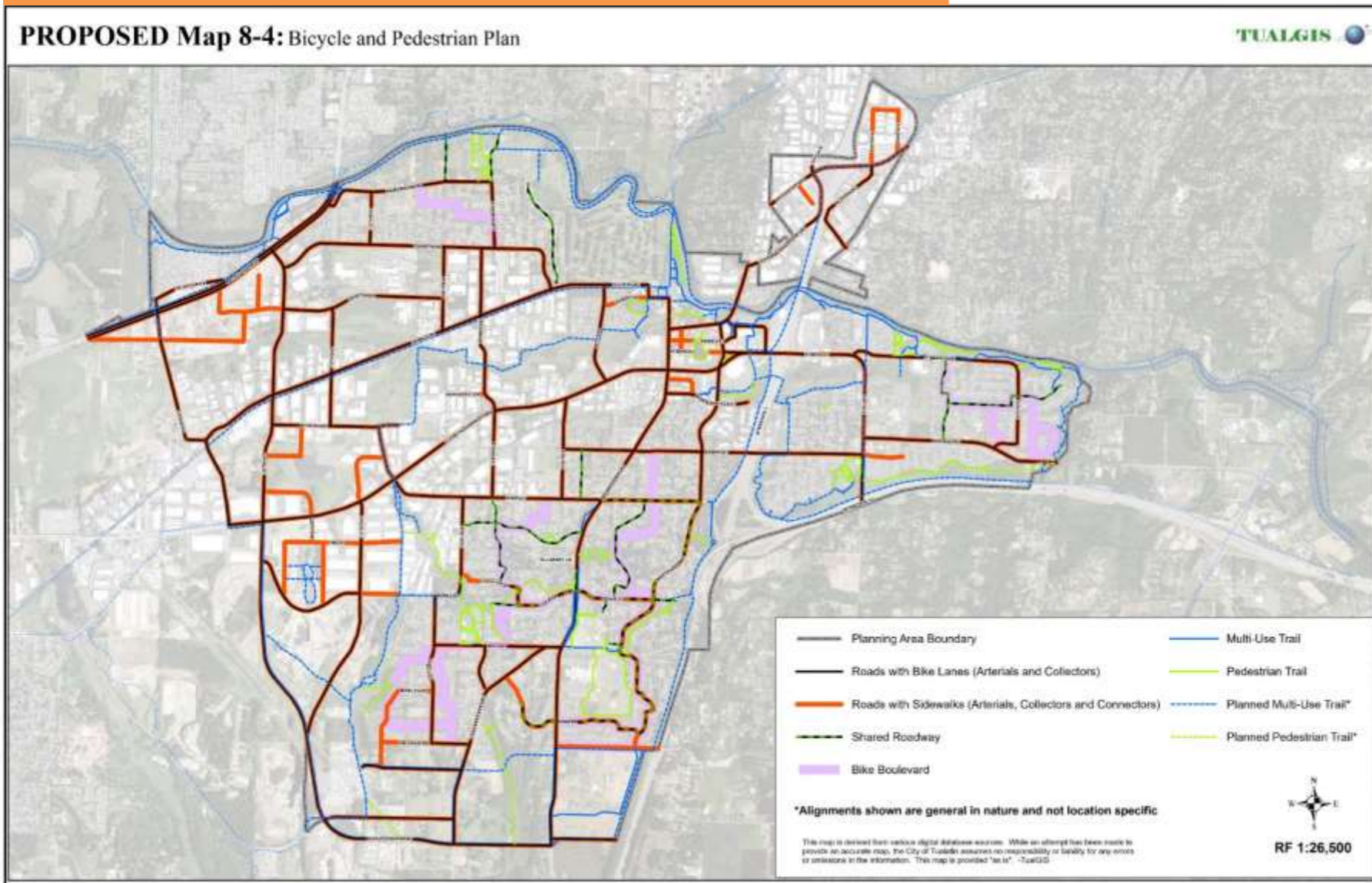
TDC 74.650. - Water Quality, Storm Water Detention and Erosion Control.

The applicant must comply with the water quality, stormwater detention and erosion control requirements in the Tualatin Municipal Code Surface Water Management Ordinance. If required:

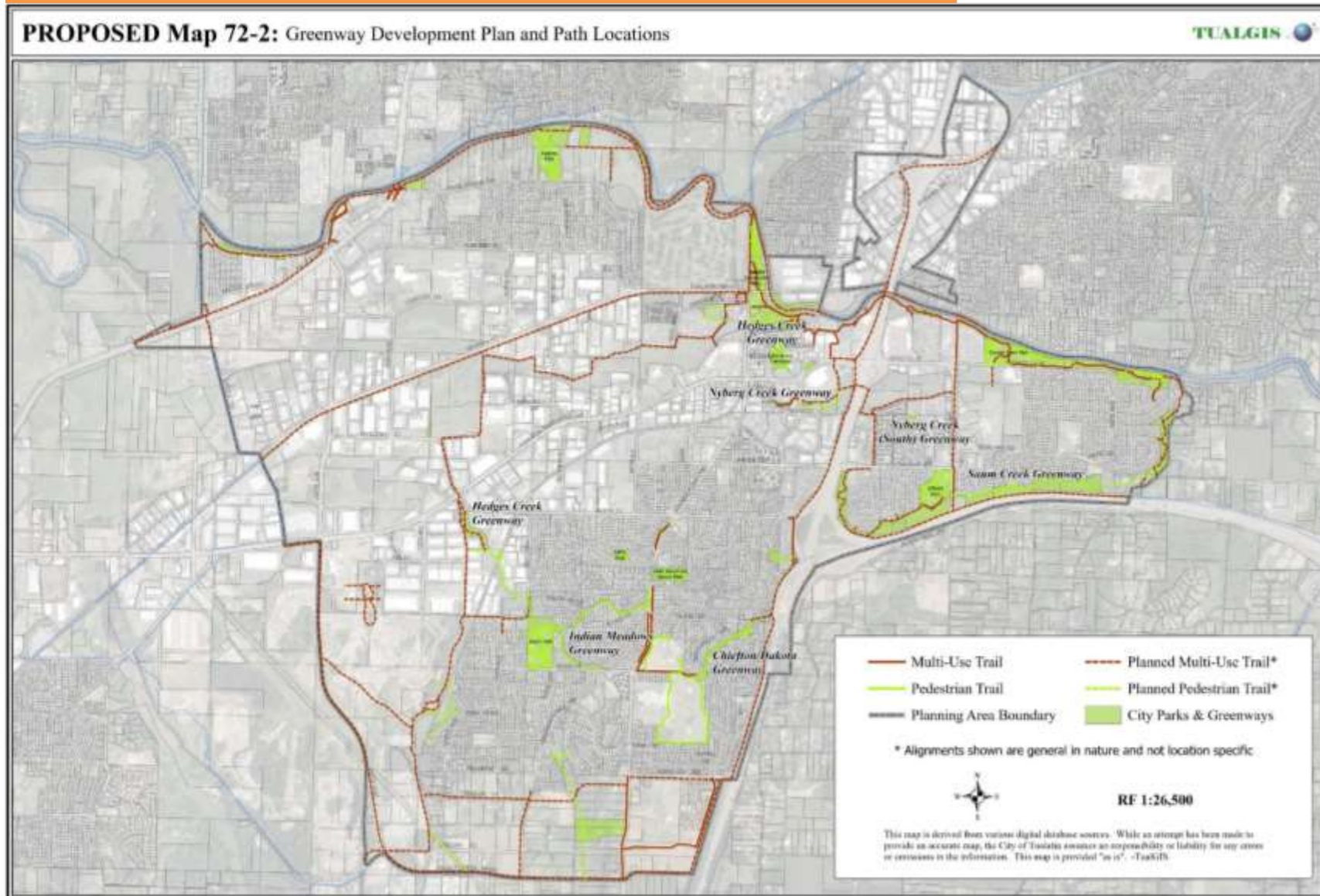
MAP AMENDMENTS



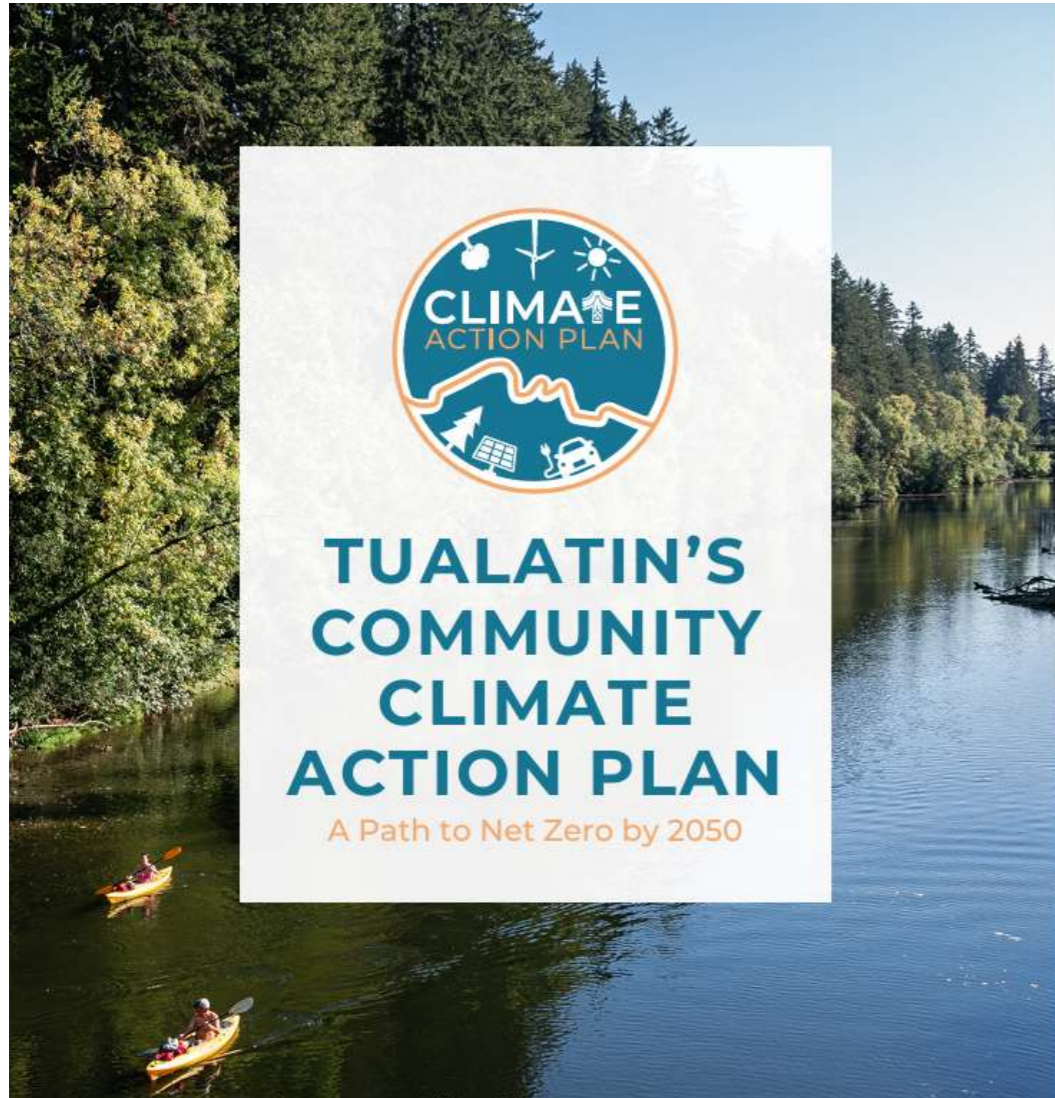
MAP AMENDMENTS



MAP AMENDMENTS



Implements Climate Action Plan



- **Action 1.1.11** Support CWS in implementing the strategies included in their Thermal Load Management Plan.
- **Action 1.1.13** Protect and restore the Tualatin River watershed.
- **Action 1.3.3** Evaluate strategies to reduce flooding in flood-prone areas.
- **Action 1.3.4** Increase flood capacity on publicly owned lands.
- **Action 1.3.8** Consider constructing large, regional stormwater management facilities to increase stormwater management capacity.

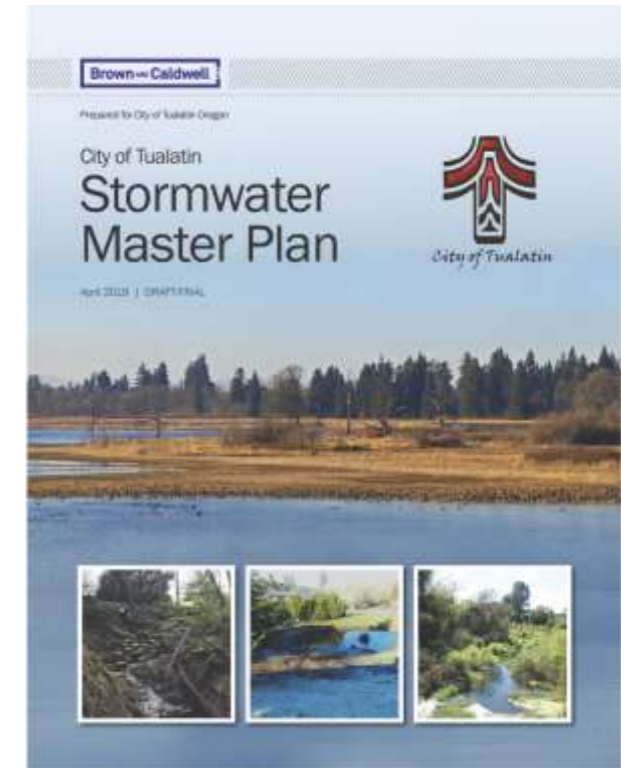
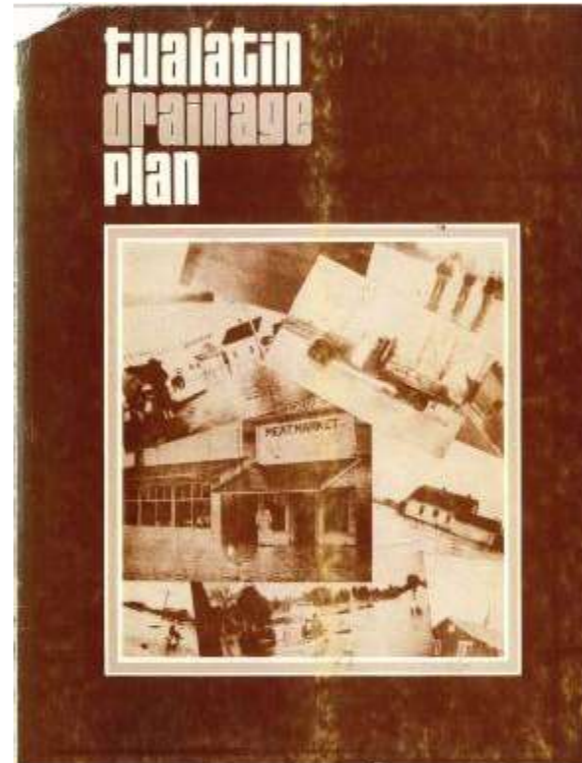
APPROVAL CRITERIA

- Statewide Planning Goals
- Oregon Administrative Rules
- Metro Code
- Tualatin Development Code:
 - Chapter 33.250 Type IV-B
 - Chapter 33.070 Plan Amendments



PUBLIC COMMENT

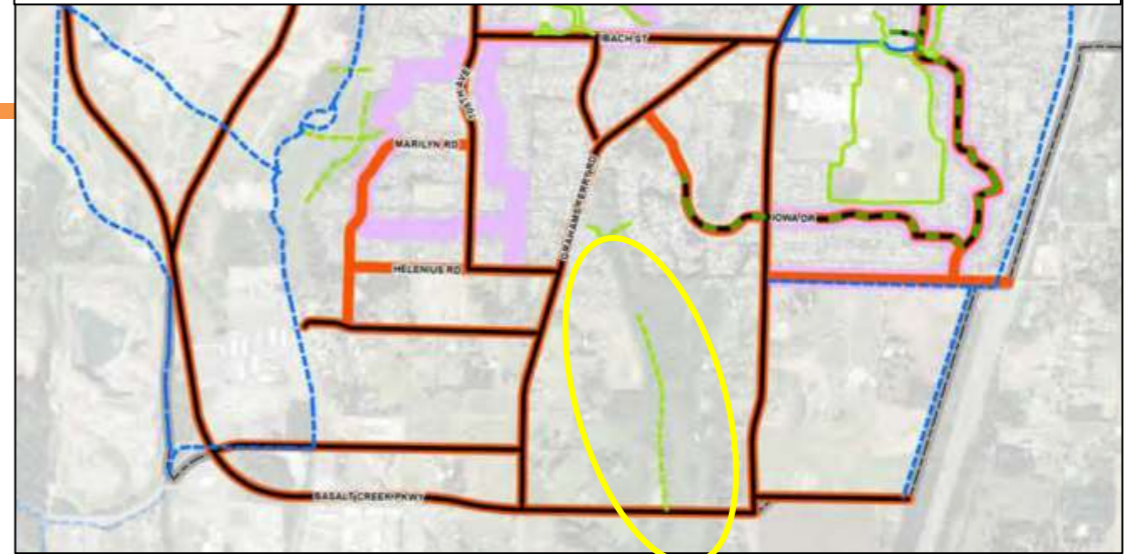
- Claims the 2019 Stormwater Master Plan effort is outdated and lacked sufficient public outreach
- Claims do not address approval criteria or legal merits



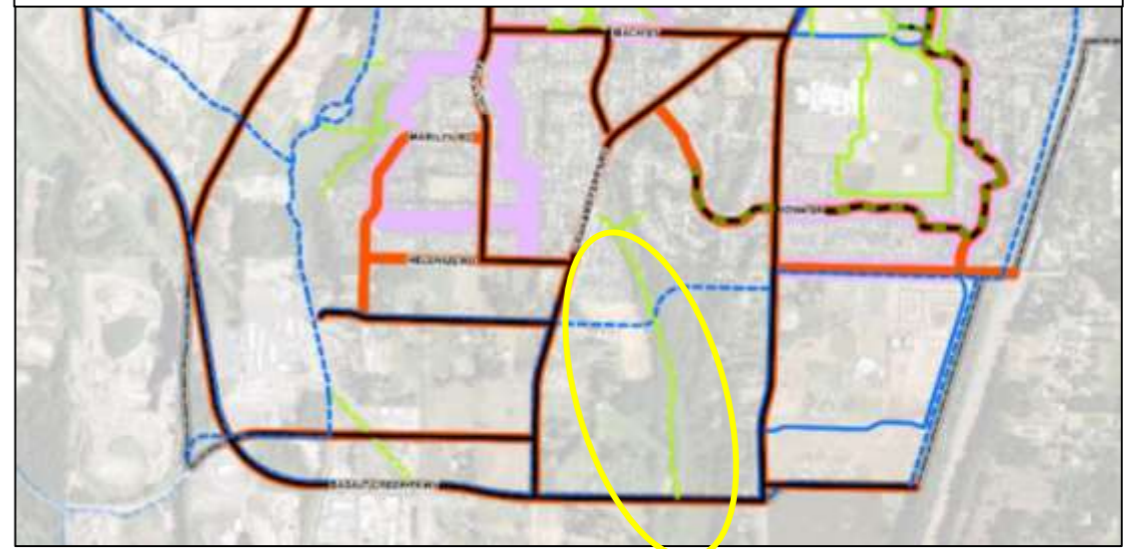
PUBLIC COMMENT

- Claims Maps 8-4 and 72-2 include conflicting information
- Trails are typically located in natural resource areas
- Trails secured through development by easement agreements
- Alignments are general in nature and not location specific
- Claims do not address approval criteria or legal merits

EXISTING Map 8-4



PROPOSED Map 8-4



----- Planned Pedestrian Trail*

*Alignments shown are general in nature and not location specific

RECOMMENDATION

The Planning Commission *recommends approval of PTA/PMA 24-0003*

Approval of **Ordinance 1489-24** would:

- Adopt the Stormwater Master Plan as a supporting document to the Comprehensive Plan;
- Add Map 9-3;
- Amend relevant Comprehensive Plan policies, as well as Municipal and Development Code references related to stormwater; and
- Ensure identified projects are eligible for grant funding.

Approval of **Ordinance 1490-24** would:

- Adopt the Basalt Creek Parks and Recreation Plan as a supporting document to the Comprehensive Plan;
- Amend Maps 8-4 and 72-2;
- Ensure identified projects are eligible for grant funding.