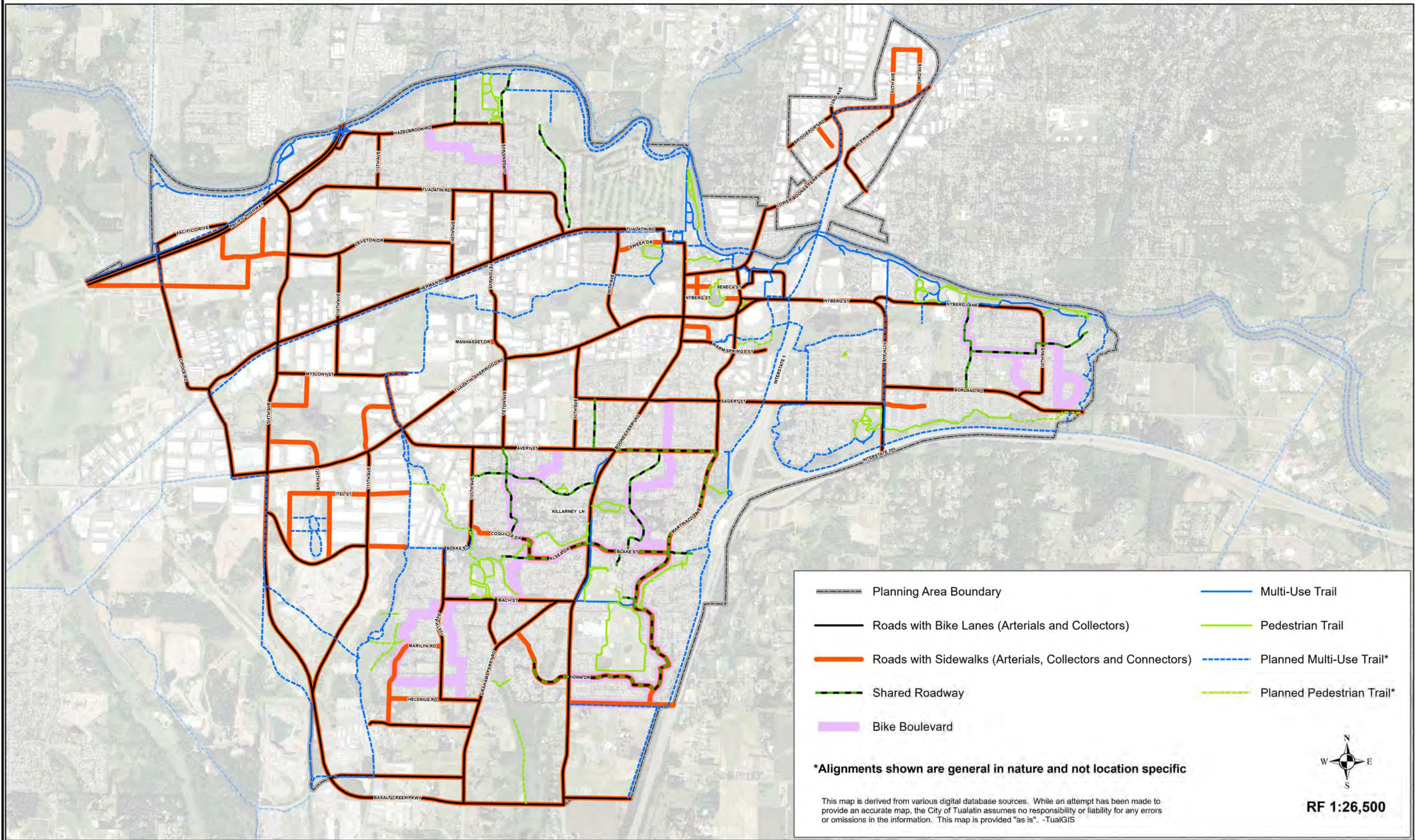






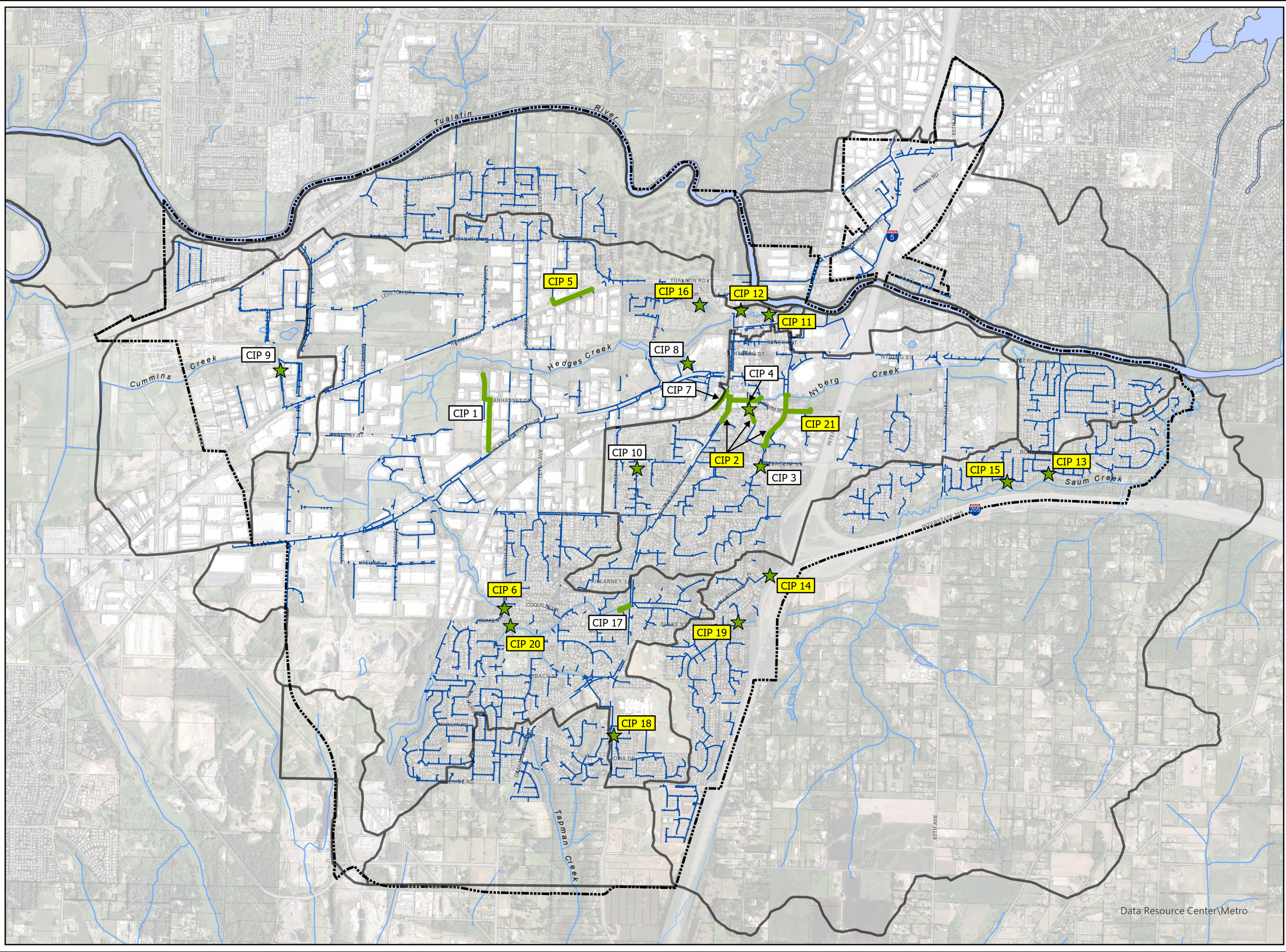


EXISTING Map 8-4: Bicycle and Pedestrian Plan

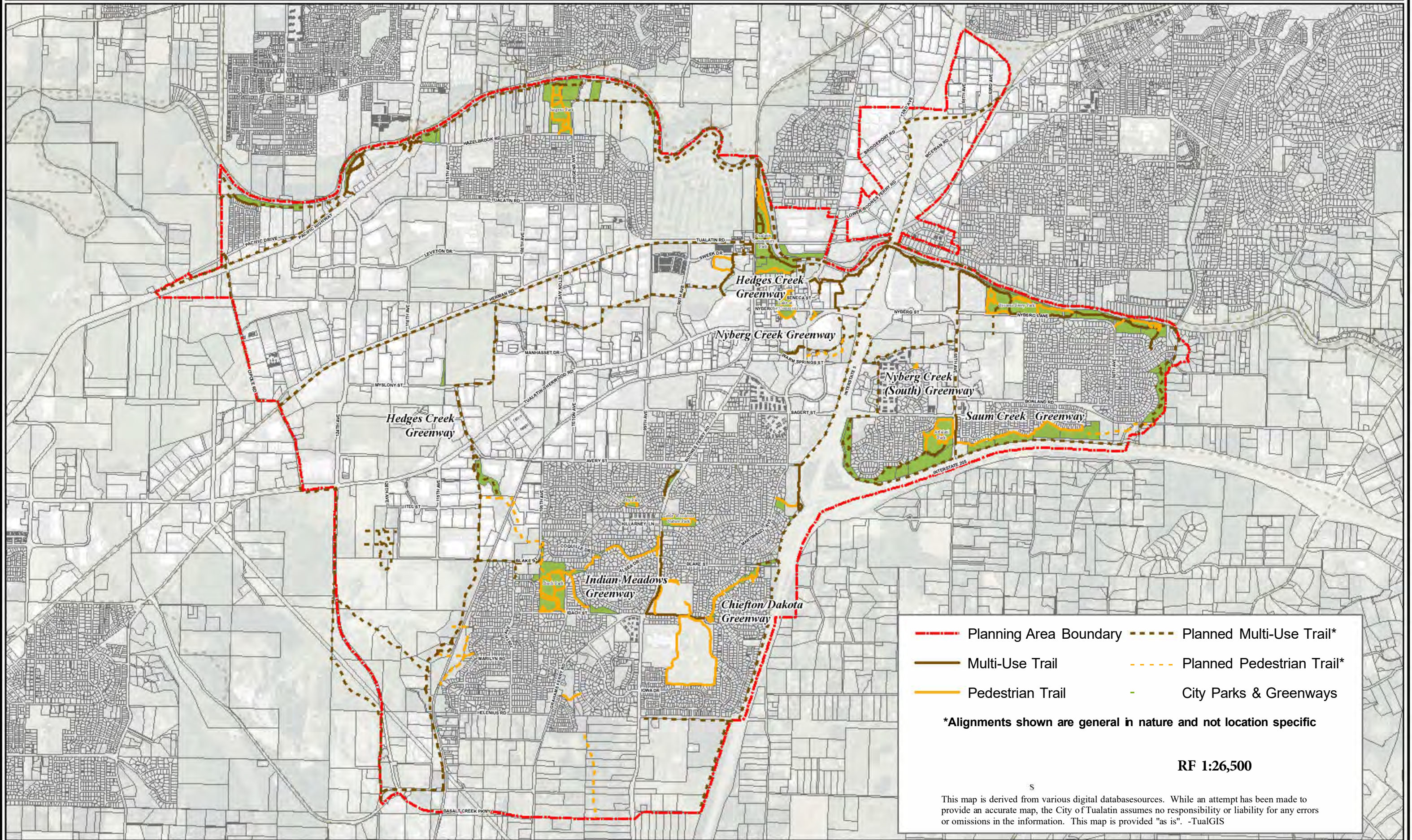








-  CIP (Conveyance Pipe or Channel)
-  CIP (Other)
-  Storm Lines
-  Major Drainage Basins
-  Planning Area Boundary
-  Streams



RF 1:26,500

EXISTING Map 72-2: Greenway Development Plan and Path Locations



-  Planning Area Boundary
-  Planned Multi-Use Trail*
-  Multi-Use Trail
-  Planned Pedestrian Trail*
-  Pedestrian Trail
-  City Parks & Greenways

*Alignments shown are general in nature and not location specific

RF 1:26,500

This map is derived from various digital databasesources. While an attempt has been made to provide an accurate map, the City of Tualatin assumes no responsibility or liability for any errors or omissions in the information. This map is provided "as is". -TualGIS

PROPOSED Map 72-2: Greenway Development Plan and Path Locations

