

JUNE 22, 2020

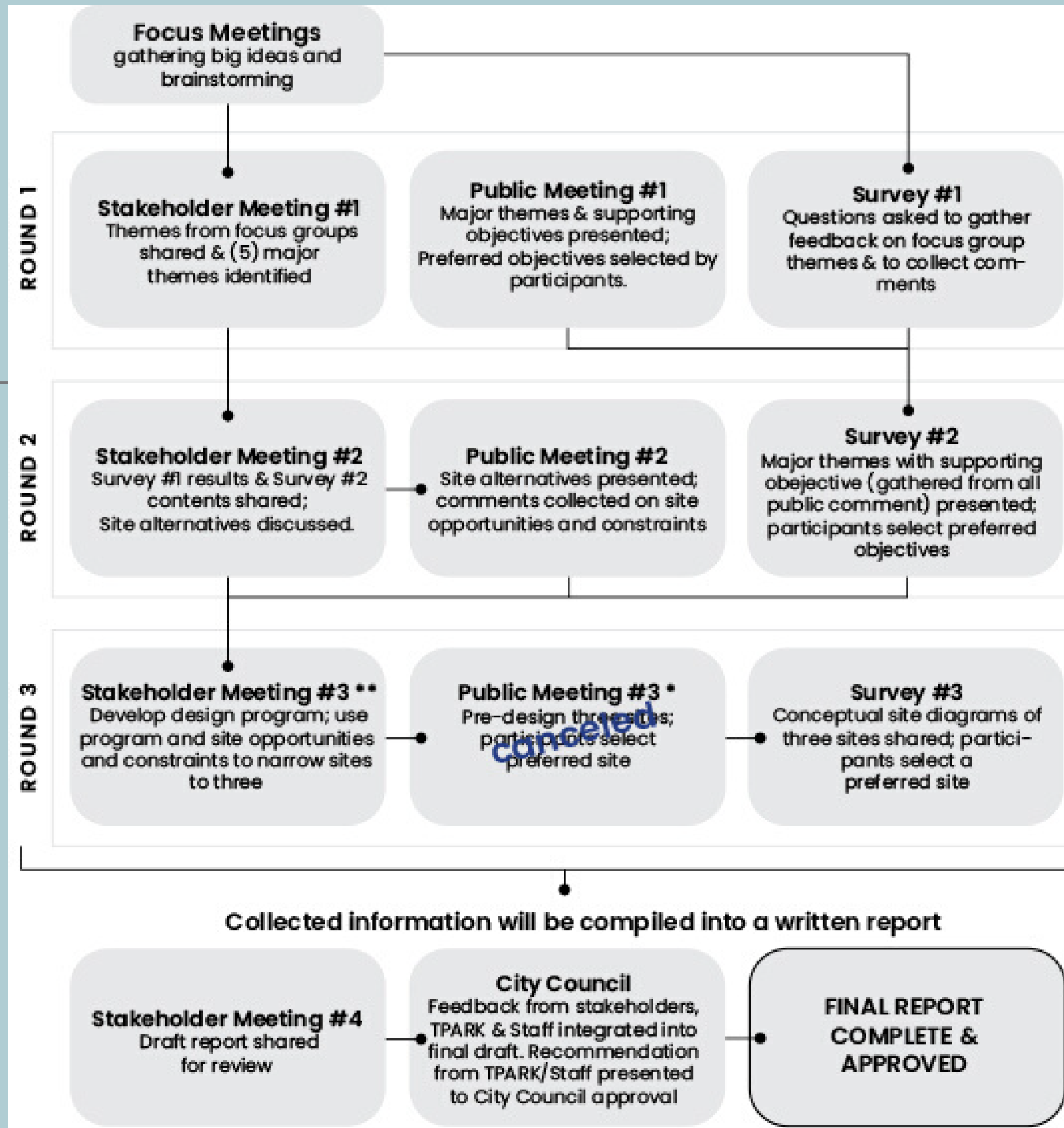


# Veterans Memorial Presentation

**City of Tualatin Parks & Recreation**



# Process Overview






# Public Information & Notification

- Online
- Social
- Print
- Media

**M** Assistant to the City Manager Megan George, City of Tualatin AGENCY

**What Does a Veterans Memorial Mean to You? ¿Qué Representa Para Usted Un Monumento Conmemorativo?**

We are asking you to share your thoughts on this topic and enjoy some tasty refreshments during a series of meetings over the next three months. Each will focus on a different aspect of the project from themes to location; we hope you will join us at one or all three! Tualatin Public Library Community Room 18878 SW Martinazzi  
See more...



16 Jan · Subscribers of City of Tualatin

Thank Comment 2 4

See 2 previous comments

**T** Tracy Bell, CIO District 4  
I read about this in the paper that is delivered - as a veteran, I think it is important to be involved in projects such as this. There are plenty of folks who will have something... See more  
17 Jan Thank Reply 1

**D** David Cagle, Ibach CIO  
I agree with you Tracy. As a veteran of the Iraq war, I think its important for us veterans to share our ideas on this. Its important to remember the sacrifice the men and women... See more  
17 Jan Thank Reply 2

# Community Outreach & Engagement

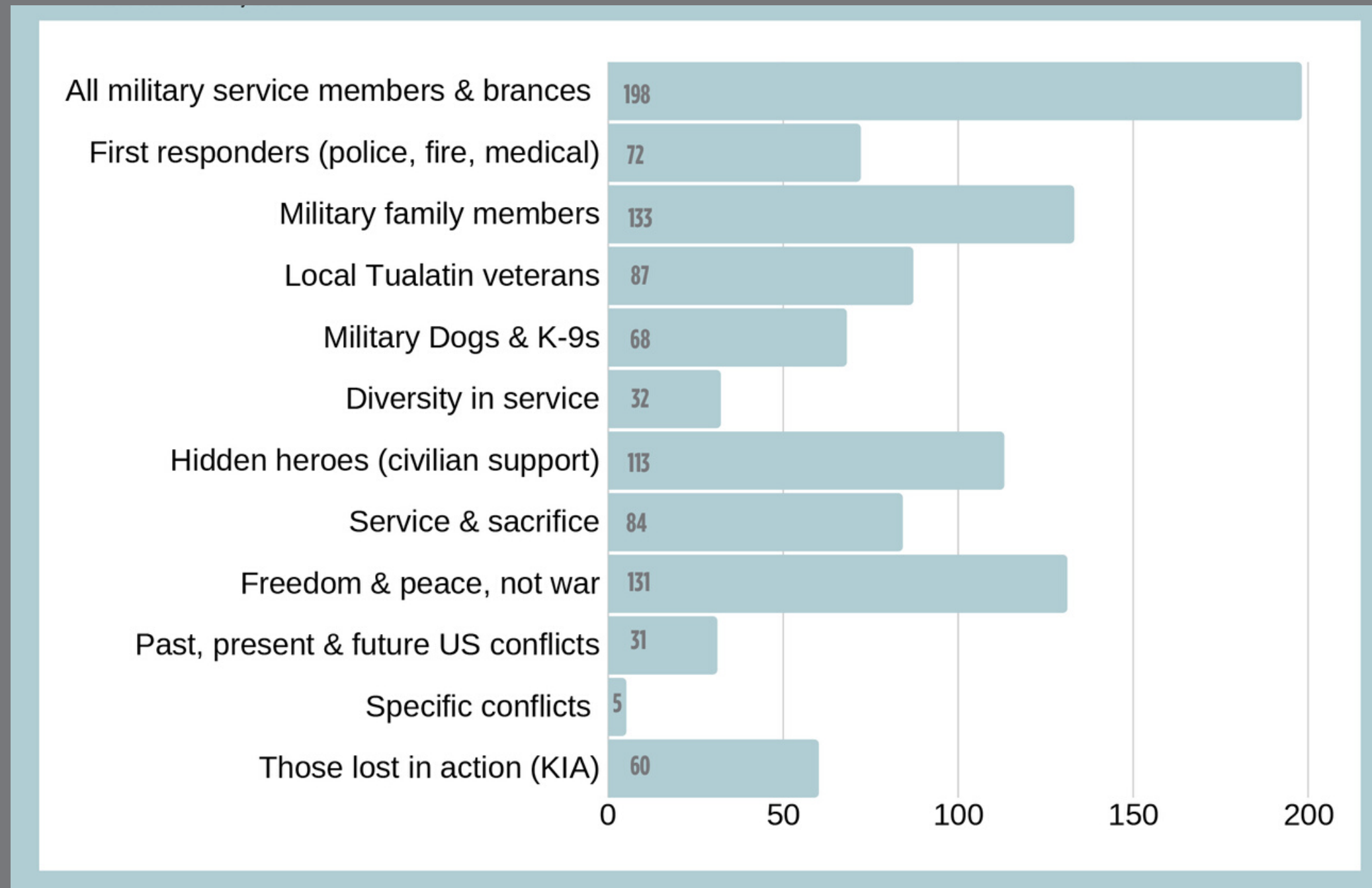
- Focus Groups
- Outreach (Starry Nights, Library Pop Up)
- Stakeholder Advisory Committee
- Community Engagement Meetings



- Veterans Memorial Survey I
  - Gather community sentiment on themes from focus groups
  - 106 responses
- Veterans Memorial Survey II
  - Determine design themes, objectives and who to honor
  - 320 responses
- Veterans Memorial Survey III
  - Select a preferred site
  - 262 responses



# Who/What the Memorial Should Honor



- All military service members & branches
- Military family members
- Freedom & peace, not war
- Hidden heroes (civilian support)

Veterans Memorial Presentation

City of Tualatin Parks & Recreation

## Core Themes & Objectives

Through outreach and engagement with the community, five (5) core themes and associated objectives proved to be fundamental to the vision of the memorial:

### CONNECTION

*Sense of community and belonging; feeling that one matters; commitment to one another.*

- Recognizing all who have served & sacrificed
- Honors families & others affected
- Empathy & understanding for Veterans experiences
- Celebrates community

### ENGAGEMENT

*Captures attention and promotes active interaction with visitors.*

- Space for events & gatherings
- Space for benches, picnic tables & trails
- Encourages conversation & storytelling
- Space for active recreation

### EXPERIENCE

*Connection to the space by engaging the senses.*

- Welcoming to all
- Sense of peace & memory
- Focus on positive, not violence
- Does not celebrate war
- Interactive & engaging

Outreach responses gave clear direction on who and what the memorial is not. Repeatedly, public comments stated the memorial should not emphasize war or glorify violence in any way. Rather, it should focus on service, and a positive message. There was also a strong preference to avoid overwhelming amounts of information and educational facts, but rather to create an inclusive space, welcoming to all in the community. Finally, much discussion was generated regarding who the memorial should or should not honor. Survey results clarified the memorial should not focus on first responders and specific references to conflicts or people.

### SHARED VALUES

*Common beliefs, ethics, concepts or principles that are important and lasting.*

- Service
- Respect
- Sacrifice
- Inclusive/Diversity
- Honor

### TIMELESS

*Considers the past, present and future; has relevance for generations; can change over time; remains adaptable.*

- Honors military service
- Includes past, present & future
- Adaptable & able to evolve
- Peaceful conflict resolution

# Core Themes & Objectives

Veterans Memorial Presentation

City of Tualatin Parks & Recreation



# Site Assessments

- Brown's Ferry Park
- Sweek Pond Natural Area
- Toman & Van Rijn City Properties
- Little Woodrose Natural Area
- Indian Meadows Greenway
- Chieftain Dakota Greenway
- Tualatin Commons
- Commons Park



Veterans Memorial Presentation

City of Tualatin Parks & Recreation



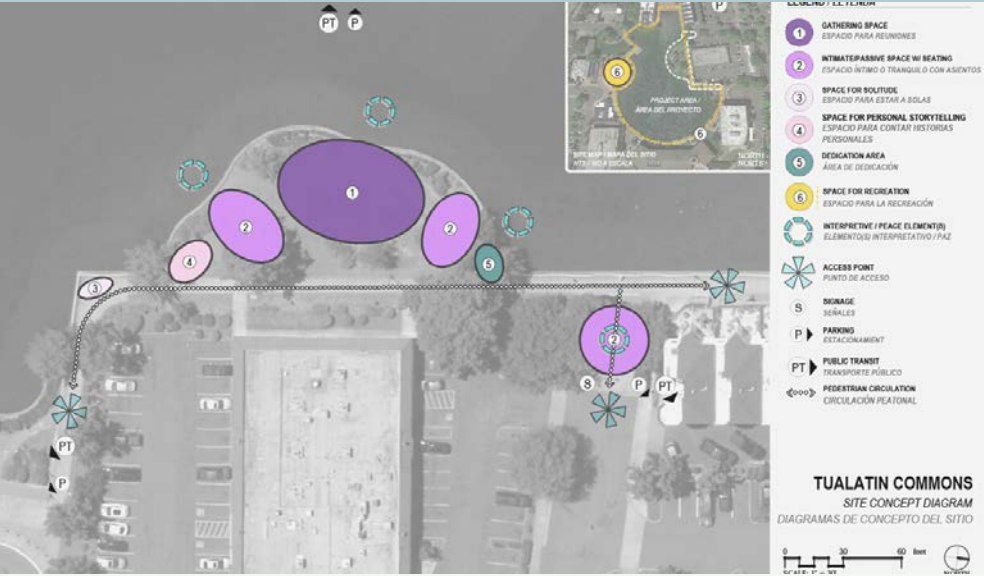
# Design Program

- Gathering Space
- Intimate & Passive Spaces with Seating
- Space for Solitude
- Space for Personal Storytelling
- Recreation Space
- Dedication Area
- Interpretive Elements
- Signage
- Parking
- Public Transportation





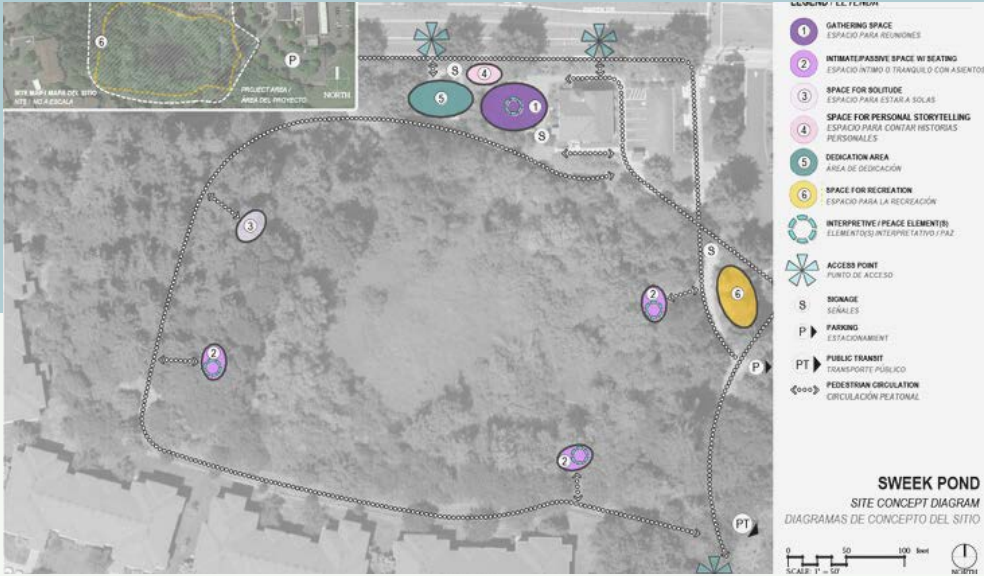
# Preferred Site Locations



TUALATIN COMMONS Preferred Location

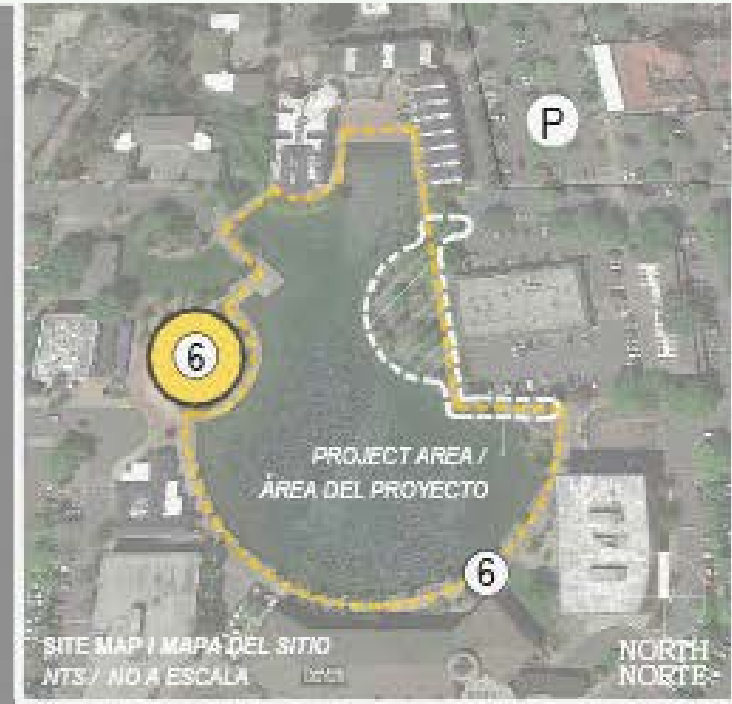
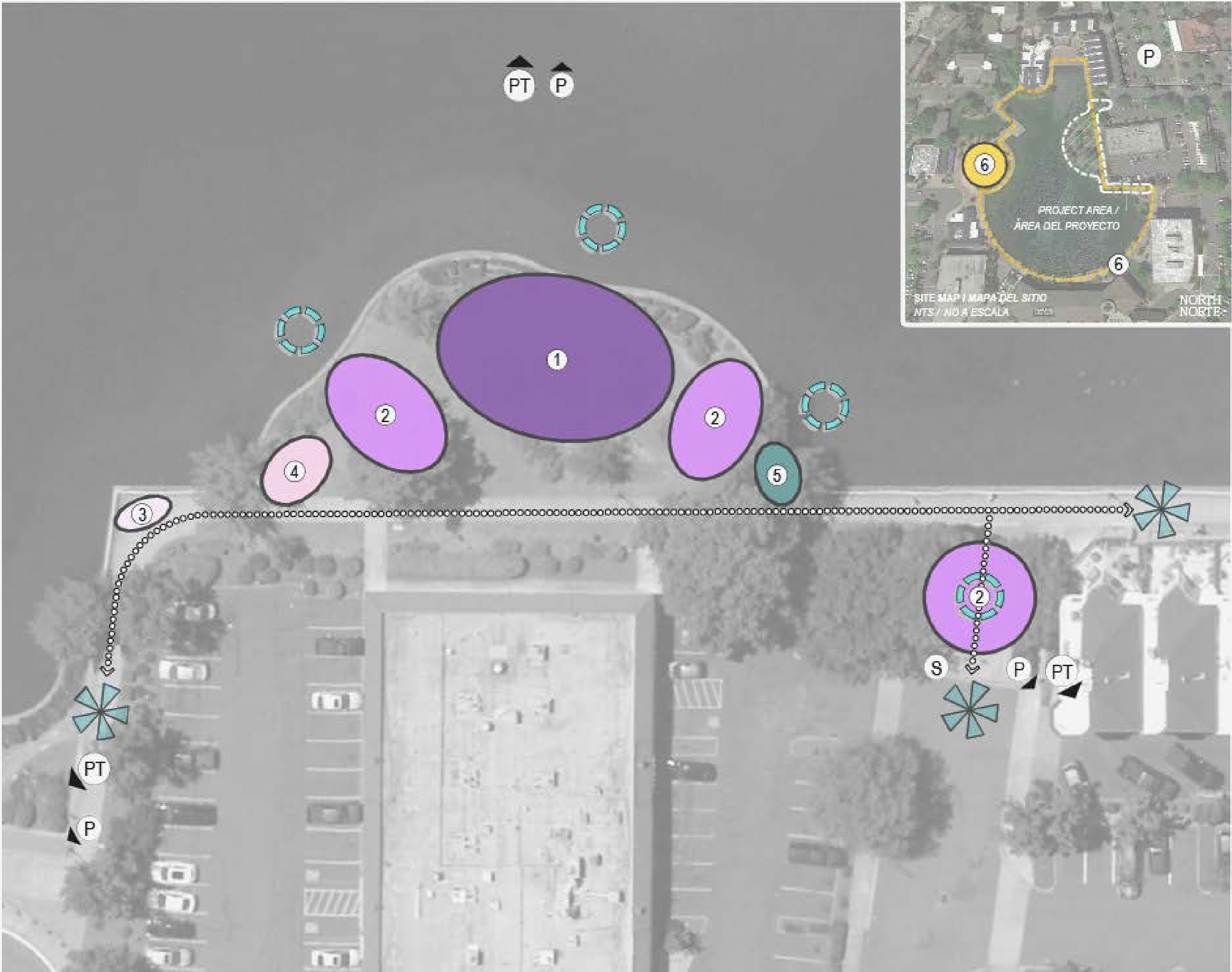


BROWN'S FERRY PARK



SWEEK POND NATURAL AREA





**LEGEND / LEYENDA**

- ① **GATHERING SPACE**  
ESPACIO PARA REUNIONES
- ② **INTIMATE/PASSIVE SPACE W/ SEATING**  
ESPACIO ÍNTIMO O TRANQUILO CON ASIENTOS
- ③ **SPACE FOR SOLITUDE**  
ESPACIO PARA ESTAR A SOLAS
- ④ **SPACE FOR PERSONAL STORYTELLING**  
ESPACIO PARA CONTAR HISTORIAS PERSONALES
- ⑤ **DEDICATION AREA**  
ÁREA DE DEDICACIÓN
- ⑥ **SPACE FOR RECREATION**  
ESPACIO PARA LA RECREACIÓN
- ⊗ **INTERPRETIVE / PEACE ELEMENT(S)**  
ELEMENTO(S) INTERPRETATIVO / PAZ
- ★ **ACCESS POINT**  
PUNTO DE ACCESO
- S **SIGNAGE**  
SEÑALES
- P **PARKING**  
ESTACIONAMIENTO
- PT **PUBLIC TRANSIT**  
TRANSPORTE PÚBLICO
- ⋯ **PEDESTRIAN CIRCULATION**  
CIRCULACIÓN PEATONAL

**TUALATIN COMMONS**

SITE CONCEPT DIAGRAM  
 DIAGRAMAS DE CONCEPTO DEL SITIO

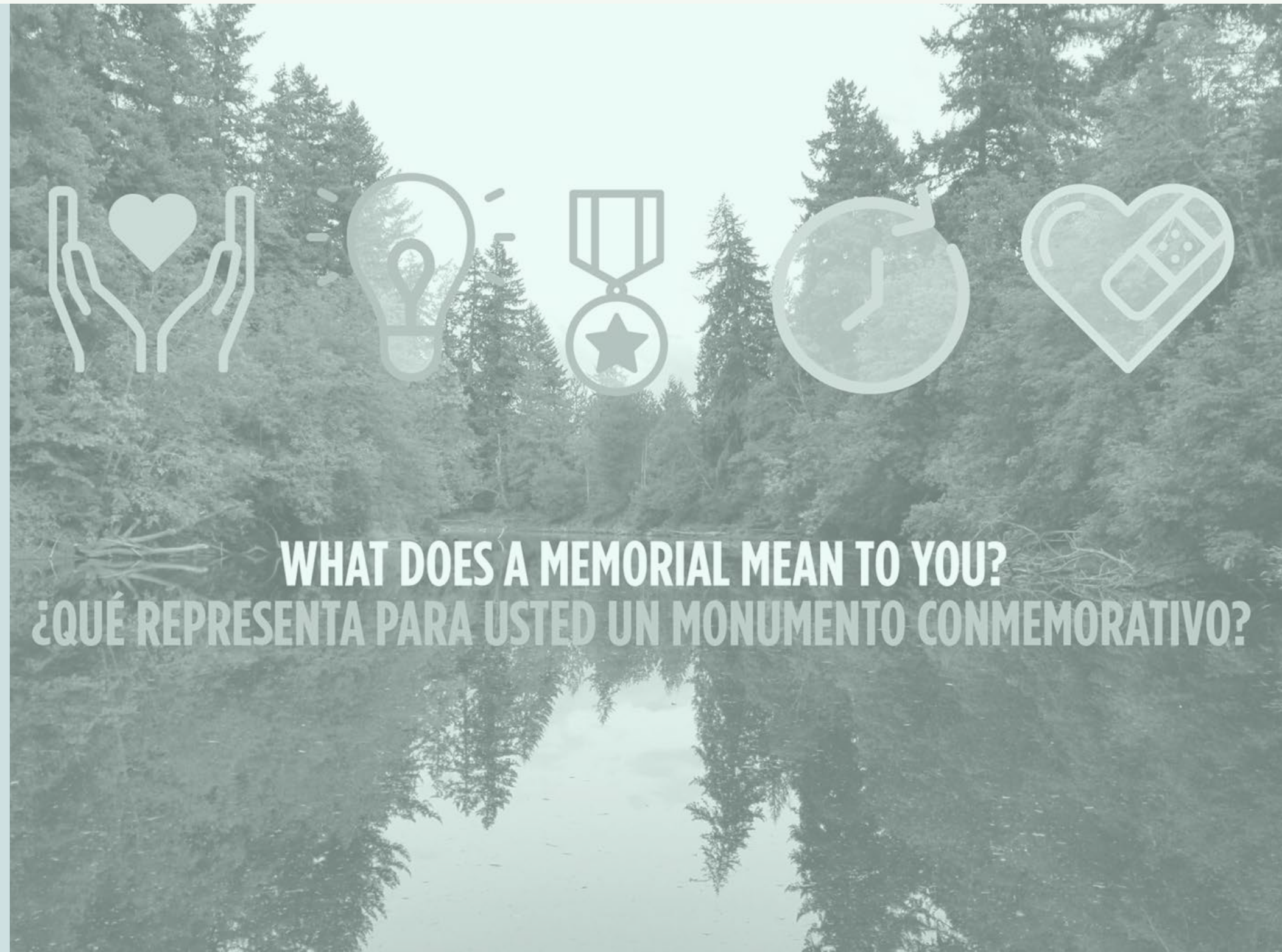


# Next Steps

Veterans Memorial Presentation

City of Tualatin Parks & Recreation

- Design Development at Tualatin Commons
- Public Engagement
- Selection of Schematic Design
- Determine Construction Costs
- Identify Funding Opportunities



WHAT DOES A MEMORIAL MEAN TO YOU?  
¿QUÉ REPRESENTA PARA USTED UN MONUMENTO CONMEMORATIVO?





# Questions

Veterans Memorial Presentation

City of Tualatin Parks & Recreation