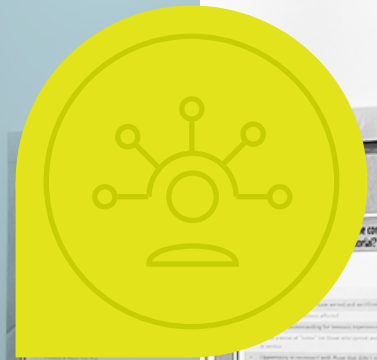




Veterans Memorial Concept Planning & Site Selection Report



SUBMITTED BY
SHAPIRO / DIDWAY
JUNE 2020

Table of Contents

ACKNOWLEDGMENTS	i
EXECUTIVE SUMMARY	ii
Community Outreach and Engagement	ii
Who the Memorial Should Honor	iii
Core Themes & Objectives	iii
Site Assessment	iv
Design Program	iv
Preferred Site Selection	iv
Next Steps	iv
PROJECT TIMELINE	1
PROCESS OVERVIEW	2
COMMUNITY OUTREACH & ENGAGEMENT	4
Focus Groups	4
Interviews & Outreach to Other Community Members	6
Additional Public Input & Comment	6
Stakeholder Advisory Committee	7
Community Engagement Meetings	9
Surveys	11
MEMORIAL THEMES AND OBJECTIVES	19
Who Memorial Should Honor	19
Themes and Objectives	19
SITE ASSESSMENT	20
Site 1: Brown's Ferry Park	22
Site 2: Sweek Pond Natural Area	25
Site 3: Toman and Van Rijn Property	28
Site 4: Little Woodrose Natural Area	31
Site 5: Indian Meadows Greenway	34
Site 6: Chieftain Dakota Greenway	37
Site 7: Tualatin Commons	40
Site 8: Commons Park	43
DESIGN PROGRAM & PREFERRED SITE SELECTION	46
Design Program	46
Preferred Site Selection	48
Next Steps	48
VETERANS MEMORIAL CONCEPT PLANNING AND SITE SELECTION APPENDICES	A-1
Media Outreach	A-2
Focus Group Meetings	A-21
Stakeholder Advisory Committee Meetings	A-30
Community Engagement Meetings	A-94
Additional Survey Comments	A-131
Additional Public Comment & Input	A-140

Acknowledgments

PROJECT PARTNERS

City of Tualatin

Ross Hoover, Parks & Recreation Director
Rich Mueller, Parks Planning & Development Manager
Kyla Cesca, Office Coordinator

People of Tualatin

Conceptual guidance & review

CONSULTANT TEAM

Shapiro Didway

Lead, Landscape Architect & Public Outreach
Jessel Champoux, Landscape Architect
Jenny Anderson, Landscape Design

Bridging Language Services

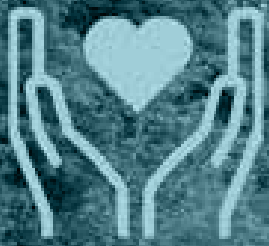
Public Outreach, Translator, & Interpreter
Noelia Ruiz, Owner

Strategic Solutions Consulting

Public Outreach & Facilitator
Ashley Horne, Principal

STAKEHOLDER ADVISORY COMMITTEE

Matt Antis, Resident & Business Owner, National Guard
Buck Braden, Arts Advisory Committee
Frank Bubenik, Mayor
Christopher Friz, Forward Assist
Brandon Gill, TPARK
Brett Hamilton, Arts Advisory Committee
John Knippers, VFW
Joe Lipscomb, Local Veteran
Greg Meiling, VFW, American Legion
Dale Potts, Local Veteran
Christen Sacco, TPARK
Elena Stripling, Teen Representative
Cole Vessey, Forward Assist, American Legion
Anthony Warren, TPARK
Tricia Wilson, Commercial CIO



WHAT DOES A MEMORIAL MEAN TO YOU? ¿QUÉ REPRESENTA PARA USTED UN MONUMENTO CONMEMORATIVO?

Executive Summary

In October 2019, the City of Tualatin Parks and Recreation engaged Shapiro Didway (SD) to generate a concept, and preferred site selection for a Veterans Memorial based on input from the Tualatin community at large. The first phase of outreach focused on visioning for the memorial. Big ideas were gathered from focus group discussions and a public survey. Feedback was synthesized into categories and refined into (5) core themes by Stakeholder Advisory Committee (SAC) members. Finally, the public was given an opportunity to clarify “who” the memorial should honor and select desired objectives under each core theme.

The second phase of outreach focused on selecting a preferred site for the memorial. Eight (8) sites were considered. Each was assessed by the consultant team and presented to the SAC and public for feedback. Based on feedback and a site program developed by SAC, suitable sites were narrowed to three. Finally Site Concept Diagrams were prepared by the consultant team and shared with the public to facilitate the preferred site selection.

Community Outreach & Engagement

Community outreach and engagement included focus group meetings with local veterans, Tualatin Parks Advisory Committee, Tualatin Arts Advisory Committee, Tualatin Youth Advisory Council, Tualatin Diversity Task Force, Veterans of Foreign Wars, and Forward Assist; four (4) Stakeholder Advisory Committee Meetings with community representatives; two (2) Community Engagement Meetings; and three (3) public surveys. The project was also promoted by the city, Veterans organizations, the consultant team and SAC by personal outreach to community leaders, a project website, social media postings and other communication methods. The project was promoted in Spanish with outreach to community leaders and the Latinx community at large, bilingual engagement materials, interpreting services at public meetings, social media postings, a project website, and by setting up a table at the Tualatin Public Library.

Who the Memorial Should Honor

Through outreach and engagement with the community, it was clarified that the memorial should honor:

- All military service members & branches
- Military family members
- Freedom & peace, not war
- Hidden heroes (civilian support)

Core Themes & Objectives

Through outreach and engagement with the community, five (5) core themes and associated objectives proved to be fundamental to the vision of the memorial:

CONNECTION

Sense of community and belonging; feeling that one matters; commitment to one another.

- Recognizing all who have served & sacrificed
- Honors families & others affected
- Empathy & understanding for Veterans experiences
- Celebrates community

SHARED VALUES

Common beliefs, ethics, concepts or principles that are important and lasting.

- Service
- Respect
- Sacrifice
- Inclusive/Diversity
- Honor

ENGAGEMENT

Captures attention and promotes active interaction with visitors.

- Space for events & gatherings
- Space for benches, picnic tables & trails
- Encourages conversation & storytelling
- Space for active recreation

TIMELESS

Considers the past, present and future; has relevance for generations; can change over time; remains adaptable.

- Honors military service
- Includes past, present & future
- Adaptable & able to evolve
- Peaceful conflict resolution

EXPERIENCE

Connection to the space by engaging the senses.

- Welcoming to all
- Sense of peace & memory
- Focus on positive, not violence
- Does not celebrate war
- Interactive & engaging

Outreach responses gave clear direction on who and what the memorial is not. Repeatedly, public comments stated the memorial should not emphasize war or glorify violence in any way. Rather, it should focus on service, and a positive message. There was also a strong preference to avoid overwhelming amounts of information and educational facts, but rather to create an inclusive space, welcoming to all in the community. Finally, much discussion was generated regarding who the memorial should or should not honor. Survey results clarified the memorial should not focus on first responders and specific references to conflicts or people.

Site Assessment

The consultant team assessed eight (8) potential sites with support documentation provided by the City. Sites included:

- Brown's Ferry Park
- Sweek Pond Natural Area
- Toman & Van Rijn City Properties
- Little Woodrose Natural Area
- Indian Meadows Greenway
- Chieftain Dakota Greenway
- Tualatin Commons
- Commons Park

Site analysis for each site was presented at Stakeholder Advisory Committee Meeting II and Community Engagement Meeting II. Participants were guided through each site and given an opportunity to provide feedback on opportunities and constraints.

Design Program

Using objectives from Veterans Memorial Survey II, the Stakeholder Advisory Committee was guided through a programming activity to create a design program for the memorial. This program outlines desired uses and site features that have spatial characteristics for the site. Desired memorial physical attribute elements include:

- Gathering space: Provide a gathering space to accommodate 50 people standing or 30 people sitting. The space should be flexible and open to accommodate diverse programming and small community gatherings.
- Intimate/passive spaces with seating: Provide an intimate space or a sequence of smaller spaces that accommodate two to three people comfortably sitting.
- Space for solitude: Provide a space that is quiet, reflective, calming and peaceful.
- Space for personal storytelling: Provide a passive space where people can do personal storytelling.
- Recreation space: Provide a recreational space that can accommodate physical activities such as programming.
- Dedication area: Provide a dedication area that is inclusive of all.
- Interpretive element(s): Provide interpretive element(s) that will serve as a focal point that celebrates life and remains timeless.
- Signage: Provide signage for the Memorial.
- Parking: Provide parking for up to 25 cars.
- Public transportation: The site should be accessible by public transportation.

Preferred Site Selection

Based on each site's opportunities and constraints and the design program, the Stakeholder Advisory Committee selected three sites most suitable for the memorial. These included:

- Brown's Ferry Park
- Sweek Pond Natural Area
- Tualatin Common

The consultant team then spatially arranged site program physical attribute elements on each site, conceptually illustrating how each site could be developed. These Site Concept Diagrams were introduced to the public in Survey III, where participants were asked to select their preferred site. **The preferred site selected is Tualatin Commons.**

Next Steps

This report serves as the "road map" to Tualatin's Veterans Memorial, clearly outlining public sentiment and what is held as important and essential to this future community space. Next steps will build on these extensive outreach findings, with the development of concept designs for the Memorial, located at the preferred Tualatin Commons site. Through this Schematic Design phase, a consultant team will conduct additional public outreach and establish design intent for the memorial. Once a preferred schematic design is selected and associated costs outlined, funding opportunities can be determined for construction documentation and installation.

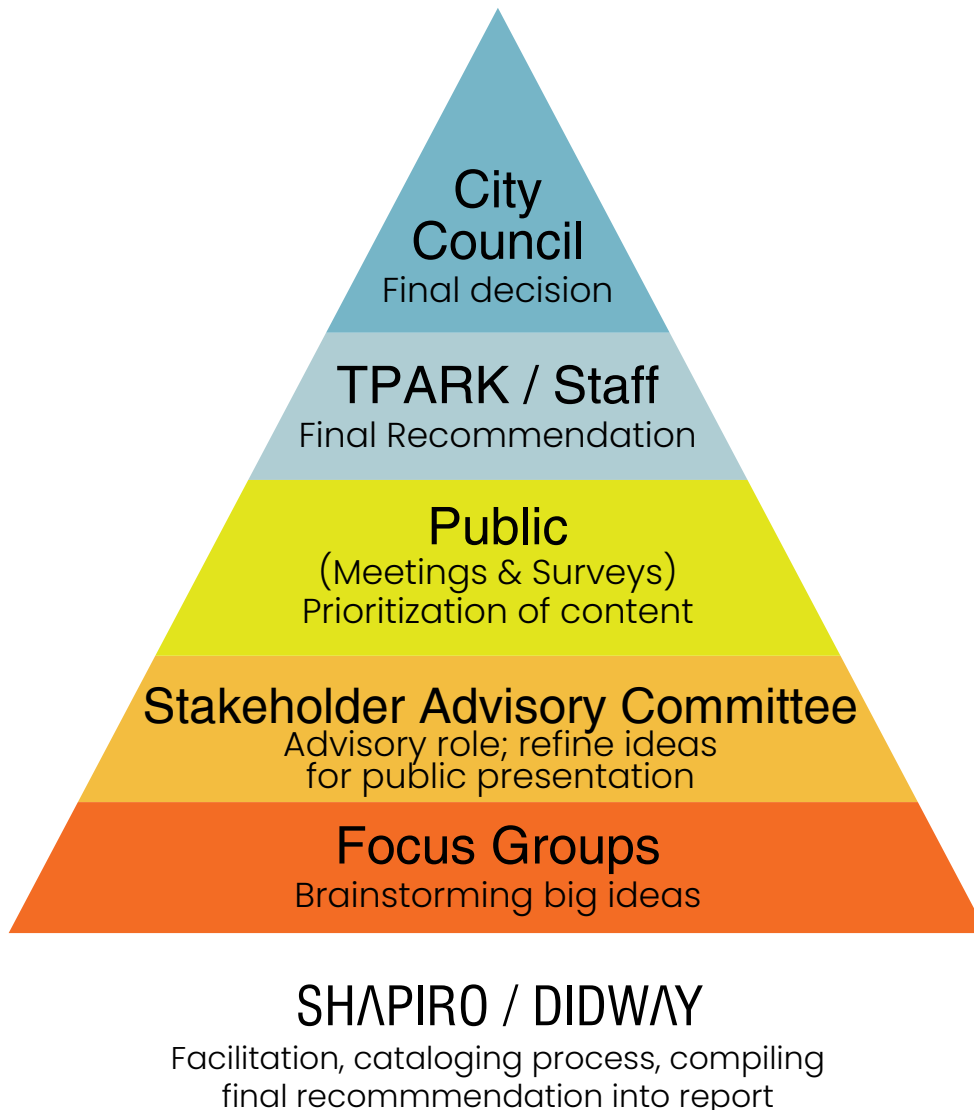
Process Overview

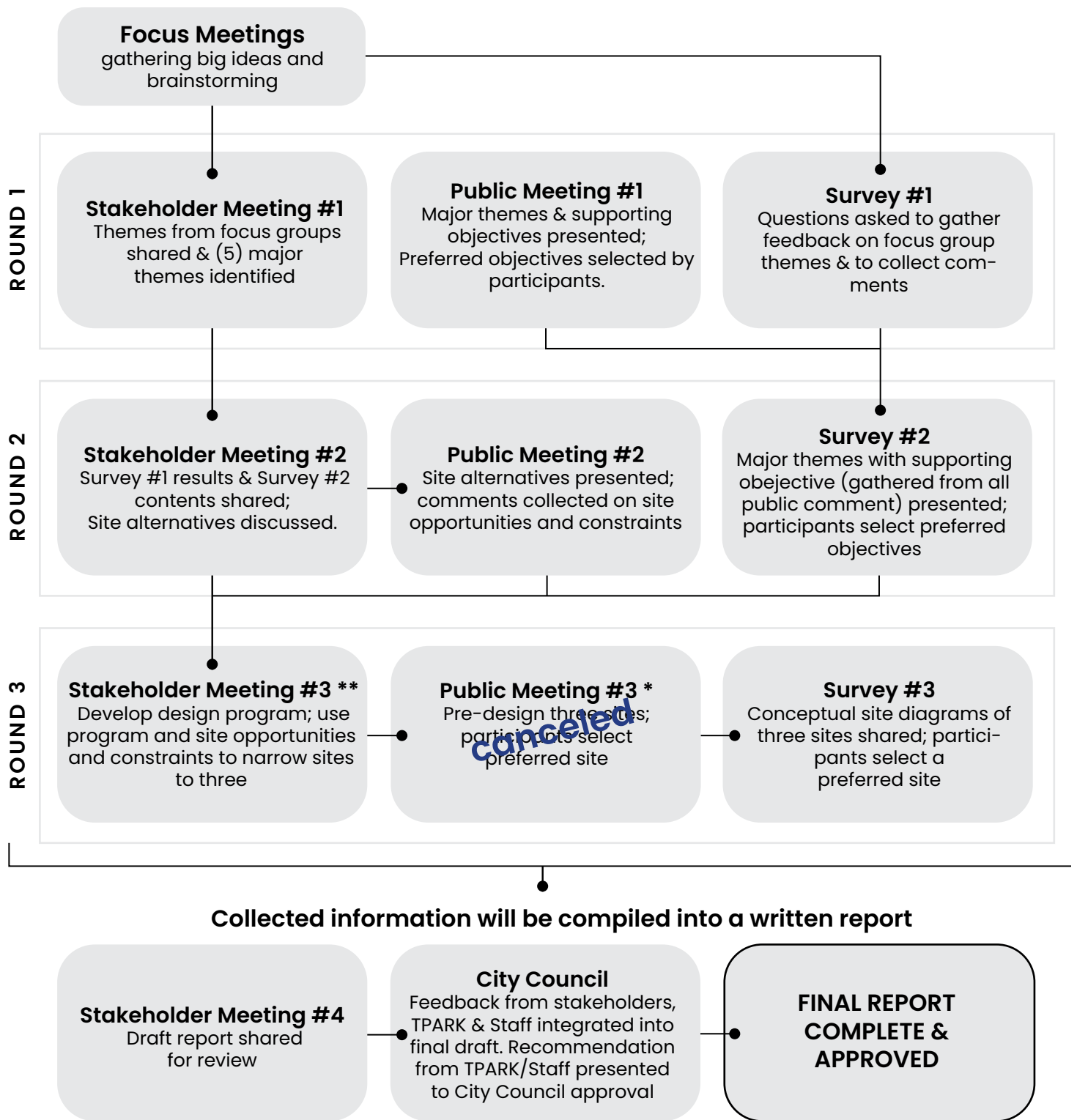
City of Tualatin Parks and Recreation and the SD consultant team commenced the study with outreach to focus groups. A Stakeholder Advisory Committee (SAC) was formed from focus group representatives. Members of the stakeholder group include diverse community representatives from Veterans of Foreign Wars, Forward Assist, American Legions, Tualatin Arts Advisory Committee, Tualatin Parks Advisory Community, Tualatin Commercial Citizens Involvement Organization, a student youth representative, several unaffiliated veterans who live and/or work in Tualatin, and mayor Frank Bubenik. The Stakeholder group was engaged at four (4) meetings. Participants served an advisory role, providing valuable insights for the project and refining materials to be presented at public meetings.

Two (2) Community Engagement Meetings were hosted at the Tualatin Public Library. Feedback from the public was also solicited through three (3) online public surveys. Project details were also made available to the public on a project website, social media postings and other communication methods. The public played a key role in selecting who the memorial should honor, memorial objectives and selecting a preferred site.

Input from stakeholders and the public form the foundation for Veteran Memorial recommendations presented in this report. This report is intended to form the basis for evaluating next steps and lays the groundwork to proceed with future design. It is important to note, this first project phase has focused on site assessment, development of themes, concepts and objectives, program definition and site selection. This process does not include schematic design. While conceptual site diagrams have been developed to facilitate site selection, this pre-design phase does not include final design recommendations.

This report will be reviewed by Tualatin Parks Advisory Committee (TPARK) who will make a recommendation to City Council.





* Canceled due to the COVID -19 pandemic. Public Meeting #3 content was integrated into Survey III and through online engagement.

** Rescheduled to a virtual meeting due to COVID - 19.



Community Outreach & Engagement

The SD consultant team worked closely with Tualatin Parks and Recreation to develop an overall community engagement process that would foster discussion and identify and explore as many diverse community perspectives as possible. The goal of conducting outreach was to capture the visions and concerns of the community at large. Participation from over 900 people enriched the process and confirmed community sentiment for the future memorial space.

To build project awareness, a project website was created, and connections were made to Tualatin community members through social media postings, distribution of project flyers, email blasts, etc. The project also appears in: Tualatin Life, Tualatin Times (digital & print), Tualatin Today, Explore Tualatin and the VFW Post 3452 Newsletter. The consultant team, Parks and Recreation staff and stakeholder group members also diligently reached out to make personal and digital contact with community members.

All written and graphic content for public meetings, public surveys, and project flyers were prepared in Spanish and English. A Spanish facilitator attended community meetings and performed outreach to Spanish community members. Comments from focus group, stakeholder advisory group and community engagement meetings are summarized below and incorporated into the recommendations presented in this report. The report itself is part of the input process intended to allow interested parties to examine community feedback and topics surrounding the memorial as the specific design of the project develops. Full meeting summaries of community engagement meetings and stakeholder advisory committee meetings are available in the appendices of this report.

Focus Groups

The intent of these meetings was to brainstorm ideas, identify community leaders and build awareness for the project. Meeting formats varied from one on one or small group discussions to round-table discussions with larger groups. City of Tualatin Parks and Recreation staff and SD began by presenting a summary of the project background and sharing a project flyer explaining project details, including public meeting dates, stakeholder involvement opportunities and project website details. Participants were then asked to provide feedback on big ideas and themes for Tualatin Veteran's Memorial. SD staff collected comments through extended comments and dialogue. Attendees were also given an opportunity to submit written comments on paper through comment sheets distributed during the event, and by e-mail after the presentation. Feedback from focus group discussions was categorized into themes; each group was

sent this graphic as a meeting summary accompanied by a thank you letter requesting the group consider providing representation on the Stakeholder Advisory Committee. Meeting summary graphics are located in the appendices.

Five (5) focus groups discussions were held from November to December 2019. These included:

1. Diversity Task Force Focus Group - November 20th, 2019 at Tualatin Public Library
2. Veterans of Foreign Wars Post 3452 Focus Group - December 2nd, 2019 at VFW Post Building
3. Veterans Focus Group - December 10th, 2019 at Van Raden Community Center
4. Tualatin Youth Advisory Council, Tualatin Park Advisory Committee and the Tualatin Arts Advisory Committee Focus Group - December 10th, 2019 at Juanita Pohl Center
5. Forward Assist Oregon Focus Group - December 19th, 2019 at Vanguard Brewery

Many attendees were excited to see the City of Tualatin takes steps to create a community space that honors Veterans. Comments from participants often overlapped, with the synthesized feedback summarized into the following key themes:

Inclusive

Emphasizes diverse user group; represents numerous and varied perspectives; accessible and usable by all.

Engagement

Captures attention and promotes active interaction with user

Adaptable

Empathy - Allows user to understand, connect, relate to and share the feelings others.

Reflection

Promotes careful consideration and focus of thoughts;

Education

Facilitates learning and acquisition of knowledge, values, beliefs, etc.

Technology

Integrates technology to highlight personal experiences, share information and connect to youth,

Storytelling

Using fact and narrative (visual, written, spoken, etc.) to communicate something to an audience; giving voice to real, true stories of local community members.

Shared Values

Common fundamental beliefs, concepts or principles.

Timeless

Considers the past, present and future; has relevance for several generations; can be altered or changed over time as needed; remains adaptable

Sensitivity

Considers and respects feelings, values and perspectives of others.

Spatial Definition

Physical characteristics of a space and how they impact the user experience.

Connectivity

Links to other community networks (i.e. community, other open space/ greenway systems, public spaces, etc.)

Experiential

Elicits emotional connection to space by engaging the senses.

Therapeutic

Allows recovery and healing, mentally, emotionally or physically. Offers wellness benefits and affects quality of life.

Multi-functional/use

Meets diverse needs; provides a variety of benefits and functions.

Empathy

Allows user to understand, connect, relate to and share the feelings others.





Interviews & Outreach to Other Community Members

On December 6, 2019 the consultant team attended Starry Nights at the Tualatin Commons. That evening they invited attendees to participate in the process to develop a vision for a Veterans Memorial in the City of Tualatin. Flyers were distributed in English and Spanish with information about the project and the public participatory process. Contact was made with around 200 people and in general the feedback was positive. Most questions asked were about the location, size, funding and who the veterans memorial would be for. A lot of parents with children were attending the event, so there was a lot of questions/ comments about how this area could benefit children as well. Members from nearby communities (Tigard, West Linn and Oregon City) all admired the process and wished their towns would do the same public engagement process. From the Tualatin community members, most were happy to be given the opportunity to be involved, but some were skeptical that it would be built.

Outreach in Spanish to the Latinx community was done by Bridging Language Services. They connected with local community leaders and spent a day at Tualatin Public Library passing out flyers, talking to the Latinx community about the project and encouraging people to take the survey. A table was set up, where visitors were able to take Survey II online or by filling out a paper survey. Further outreach was done for Survey III through local Latinx community leaders and social media channels.

Finally, Tualatin Parks and Recreation and Stakeholder Advisory Committee members engaged in extensive media outreach to build project awareness and make connections with the Tualatin community. Efforts included development of a project webpage, email blasts, Nextdoor posts, Facebook posts, announcements on Twitter, and advertisement in Tualatin Life. Additionally there were news articles in the Tualatin Times, Tualatin Today and Explore Tualatin. The Media Outreach Tracking Table shown in the appendices, features a comprehensive list of media outreach methods and highlights results of such efforts.

Additional Public Comment & Input

Project promotional information and the website sited a contact email to submit additional feedback for the project. Emailed and submitted comments and documents are included in the appendices.

Stakeholder Advisory Committee

Through public outreach to the community and focus groups a Stakeholder Advisory Committee was formed. Members of the stakeholder group included: Matt Antis, Buck Braden, Mayor Frank Bubenik, Christopher Friz, Brandon Gill, Brett Hamilton, John Knippers, Joe Lipscomb, Greg Meiling, Dale Potts, Christen Sacco, Elena Stripling, Cole Vessey, Anthony Warren, and Tricia Wilson. Each committee member was provided with the project objective, time commitment, and participation expectations upfront to ensure outreach objectives were met. The Stakeholder Advisory Committee played an important role in developing meaningful public engagement strategies, communicating community desires and concerns, responding to early project deliverables with a community lens and was instrumental in helping to get the word out about the project. The first and second Stakeholder Advisory Committee meetings occurred in person at the Tualatin Public Library. The third and fourth occurred virtually over a web based meeting platform due to COVID-19 restrictions. Each meeting has been summarized below. Full meeting minutes and supporting documents provided as handouts can be found in the appendices of this report, and are also available on the project webpage at: <https://www.tualatinoregon.gov/recreation/veterans-memorial>.

STAKEHOLDER ADVISORY COMMITTEE MEETING #1-JANUARY 16TH, 2020

The meeting began with introductions and an explanation of the advisory role Stakeholder members would play and how decisions would be made for the project. The group was then asked to participate in an activity designed to intentionally allow consideration for the group's strengths, build empathy and understanding for each other and focus on common ground. This activity built a positive atmosphere for the rest of the meeting.

The primary purpose of this meeting was to organize categories generated by previous public input from seven (7) focus groups and identify major themes for the project. To do this, attendees worked in small groups. Participants were given categories with definitions that summarized input. Working together, each group arranged categories under 3-5 major themes. Each group was given an opportunity to explain their selected themes. Then collectively, attendees worked together to synthesize themes. Themes were narrowed down to the following:

- Engagement
- Experience
- Connection
- Shared Value
- Timeless

STAKEHOLDER ADVISORY COMMITTEE MEETING #2-FEBRUARY 13TH, 2020

The meeting began with introductions and review of previous meetings. Survey I results were shared with the group to begin to understand public sentiment. Attention was then given to building enthusiasm for the next public survey. As community leaders, the group was encouraged to distribute flyers and actively engage with others in the community. Collectively, means and methods to build project awareness was discussed. Feedback was also gathered on how the consultant team and Parks and Recreation staff could equip stakeholders to advocate for the project. The meeting concluded by discussing site alternatives for the project. Eight (8) preselected sites were identified, including:

- Brown's Ferry Park
- Sweek Pond Natural Area
- Toman & Van Rijn City Properties
- Little Woodrose Natural Area
- Indian Meadows Greenway
- Chieftain Dakota Greenway
- Tualatin Commons
- Commons Park

To begin the discussion, each site was located on an area map of Tualatin. Systematically the consultant team presented an assessment of each site. The SAC was then divided into small groups to analyze and discuss each site further. The groups rotated between facilitators to provide opportunities and constraints for each potential site. Participants were encouraged to visit each site and gather additional feedback for upcoming meetings.



STAKEHOLDER ADVISORY COMMITTEE MEETING #3 (VIRTUAL)-MARCH 31, 2020

Due to COVID-19 pandemic, this meeting was held virtually with stakeholder participants. The meeting began with introductions of the consultant team and Parks and Recreation staff. The previous meeting was then summarized, and participants were asked to introduce themselves and approve meeting minutes.

Results from the second survey were shared and then summarized for use in a group activity. Using these survey results, attendees were guided through a programming activity, in which they identified desired design program elements and spatial needs for the memorial. Many design ideas were explored as part of the discussion. Design program elements include the following (for a detailed breakdown, please see the Design Program section of this report):

- Gathering space
- Intimate/passive spaces with seating
- Space for solitude
- Space for personal storytelling
- Recreation space
- Dedication area
- Interpretive element(s)
- Signage
- Parking
- Public transportation

Finally, using the design program generated by the group and knowledge of each sites opportunities and constraints, participants were asked to eliminate sites that were unsuitable for the memorial. Readily the group eliminated all three greenways. Of the five remaining sites, participants voted using written comments. Three preferred sites the SAC selected for public consideration were:

- Brown's Ferry Park
- Sweek Pond Natural Area
- Tualatin Commons

STAKEHOLDER ADVISORY COMMITTEE MEETING #4 (VIRTUAL)-MAY 28TH, 2020

This virtual meeting began with introductions of the consultant team and Parks and Recreation staff. The previous meeting was summarized, and participants were asked to introduce themselves and approve the meeting minutes.

Results from Survey #3 were reviewed in which Tualatin Commons was the preferred site. Committee members were given the opportunity to discuss what excited them about the selected location.

Next, the Draft report was summarized and committee members were given the opportunity to address anything they felt was missing. The committee did not feel anything was missing. The meeting concluded with a discussion of next steps, how the report will inform subsequent design efforts and stakeholder take-away.



Community Engagement Meetings

Meetings were hosted in the community room at the Tualatin Public Library, an inclusive community space, conveniently located within the City of Tualatin. Representatives from Parks and Recreation were actively involved in all community meetings. Written meeting content was presented in both English and Spanish. A Spanish-speaking facilitator was also present to translate participant feedback and interpret for attendees. Meeting summaries and handouts are included in the appendices of this report and are also available on the project webpage.

Three (3) Community Engagement Meetings were planned as part of this project. However, due to the COVID-19 pandemic, the third community meeting was canceled, which included a parallel Spanish speaking meeting. This meeting information was integrated into online and social engagement and surveys.

COMMUNITY ENGAGEMENT MEETING #1 - JANUARY 28TH, 2020

The meeting began with introductions and a summary of project background and progress to date. Collectively participants considered who the memorial should honor. Next, while working in small groups, attendees systematically reviewed memorial themes and associated objectives. Attendees were given opportunity to add bullets and then individually prioritize bulleted objectives under each theme.

Small group work brought out addition objectives:

Connection

- Place for families to commemorate KIA members
- Provides/ welcomes all

Engagement

- To share pride for military service to our country
- To share pride in the police that serve our community

Experience

- Invoke a sense of peace and memory
- Engage all senses - Tactile and Audio

Timeless

- Historic Native American Wars
- Honoring Military Service
- History
- Embodied emotion and experience of use but not war specific
- Time frame

Shared Values

- Appreciation for History

Who should the memorial honor

- First Nations Veterans who fought for/against US
- Coast Guard
- Service of Minority populations (Latino/Hispanic)
- Freedom
- Hidden Heroes
- Historical memorial that honors military vets from all US military conflict past, present and future
- K9
- Police and 1st responders should be a different category

COMMUNITY ENGAGEMENT MEETING #2 - FEBRUARY 20TH, 2020

The meeting was conducted by Parks and Recreation staff with involvement of the consultant team. It began with introductions and review of previous meeting. Participants were given the opportunity to review the results of survey I and encouraged to take the online survey II. Next the 8 site alternatives were introduced:

- Brown's Ferry Park
- Sweek Pond Natural Area
- Toman & Van Rijn City Properties
- Little Woodrose Natural Area
- Indian Meadows Greenway
- Chieftain Dakota Greenway

Attendees broke into small groups, each assigned a facilitator, to discuss the site opportunities and constraints. Comments from participants often overlapped with the synthesized feedback summarized into the following:

- Accessibility to parking and public transportation is very important
- Strong consideration should be given to actual or perceived safety
- Memorial should be compatibility with existing site uses, site character and programming
- Setting should not be too noisy to allow contemplation, reflection, etc.
- Walking surfaces should be accessible
- Environmental constraints (i.e. flooding) might limit site suitability
- Site selection should consider proximity to other public amenities and activities to avoid feeling isolated

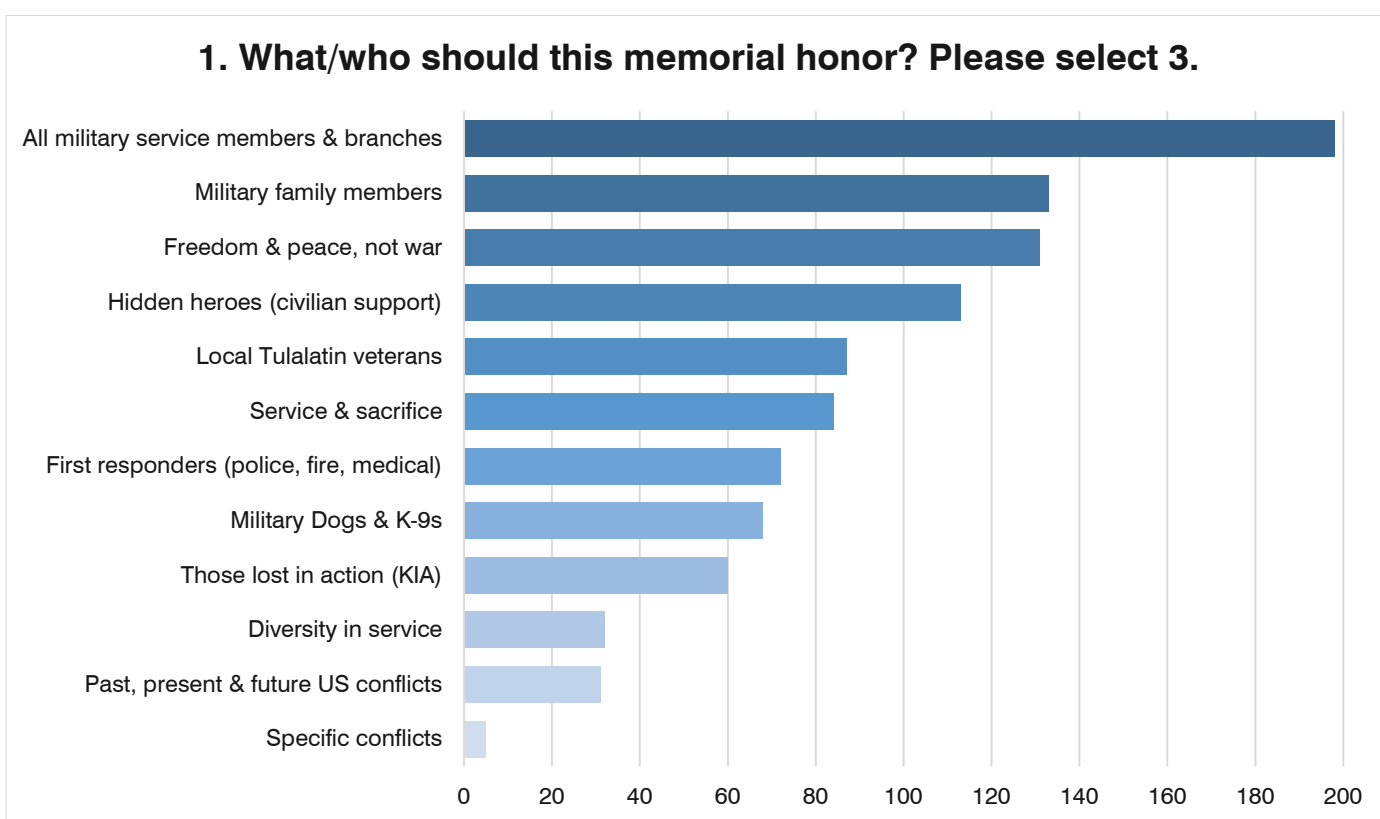
A detailed list of site opportunities and site constraints provided by attendees can be found in the Site Assessment section of this Report, categorized under each site.

Surveys

Three online surveys were created to build on outcomes from focus group, stakeholder advisory committee and community engagement meetings. The surveys were posted on the City of Tualatin's website with the link being distributed through mailing lists, emails and other social media platforms. Stakeholder Advisory Committee Members were integral in distributing the link to the survey to other community members.

Survey I

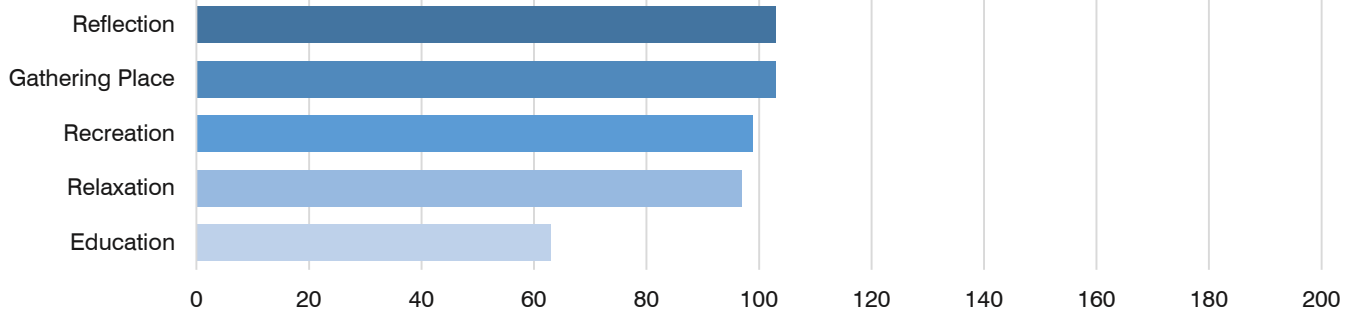
The first survey was released to the public on January 15, 2020 and remained open for three (3) weeks. The survey consisted of seven (7) questions, intended to gather community sentiment on memorial themes compiled from focus group discussions and to collect additional feedback. 106 people took the survey with an 61 additional comments. Additional comments have been summarized below. Detailed comments can be found in the appendices section of this report. The following were the questions and results:



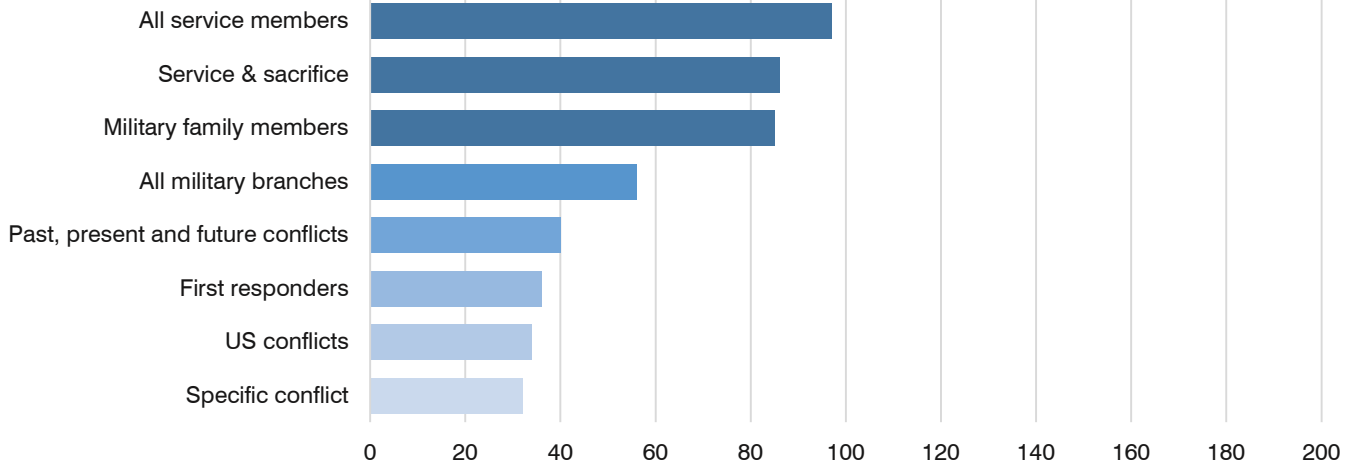
OTHER COMMENTS FROM QUESTION 1:

- To never forget those who served and those who gave the ultimate sacrifice
- Space enumerating the horrors of war
- Educational about history of wars and interventions (2 comments)
- Space to share feelings with other veterans
- A place to remember, to reflect that there is honor in service.
- A waste of money there are plenty of Veterans memorials
- Space to remember that peace is the highest goal, never war

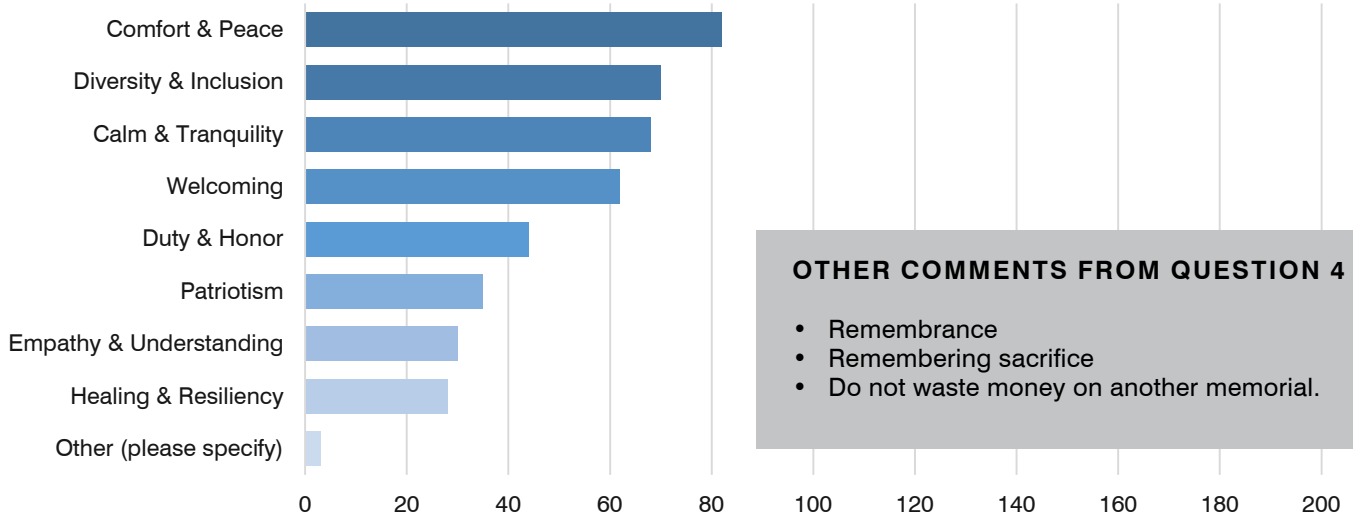
2. How could this space be used? Please rank in order of importance to you, 1 being most important.



3. What/Whose story should the memorial tell? Please rank in order of importance your top 3 or more choices, 1 being most important.



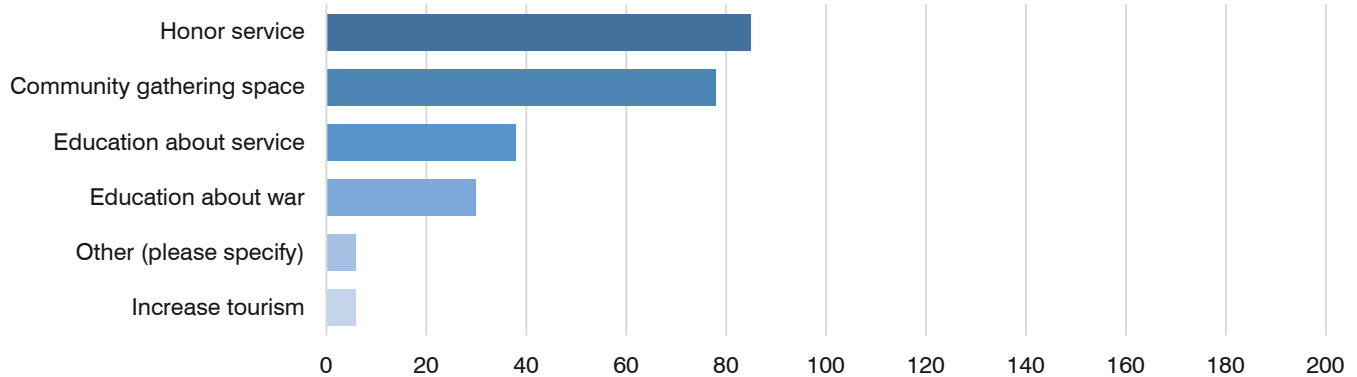
4. What feelings & values should the memorial evoke? Please check all that apply.



OTHER COMMENTS FROM QUESTION 4

- Remembrance
- Remembering sacrifice
- Do not waste money on another memorial.

5. How would you like the memorial to contribute to the community? Please check all that apply.



OTHER COMMENTS FROM QUESTION 5

- Promote peaceful resolutions over conflict; no emphasis of war or weaponry (3 comments)
- Honor the freedom our soldiers fought for by providing a playground
- Use art to promote comfort and peace, calm and tranquility.
- A destination; interactive
- Honor those forced to fight for a cause they did not believe in

QUESTION 6

Would you like to share any additional thoughts regarding the Veterans Memorial?

The comments proved to be helpful and was incorporated into future meetings and surveys. Full data to questions 6 can be found in the appendices of this report. A summary of the comments are as follows:

- Honors freedom and peace not war (12 comments)
- It should honor all service men and all branches (5 comments)
- Honors Service and freedom, no information about war, conflict, and killing (5 comments)
- Not names, lists, or educational content. (4 comments)
- Make it unique and interesting to draw people in (3 comments)
- A list of veterans (3 comments)
- Money (3 comments); not an appropriate use of tax dollars; don't spend money on this, no public funding)
- Peaceful approaches to conflict resolution not patriotism and aggression. (2 comments)
- "Buy a brick" program (2 comments).
- Art and plants, rather than cold granite and stone (2 comments).
- Include a playground space (2 comments)
- Accessible for people with disabilities (2 comments)
- A space to honor local veterans from Tualatin
- Recognize service members, do not include first responders.
- Be sure that women are not left out or their service minimized please.
- Include military dogs and the service and support they provide
- Inclusive
- A place for healing and support
- Interactive and changes
- Do not take away from existing active spaces this. Should be vandal resistant
- Have many flags: US, MIA, Military call sign flags.
- Provide space for ceremonies

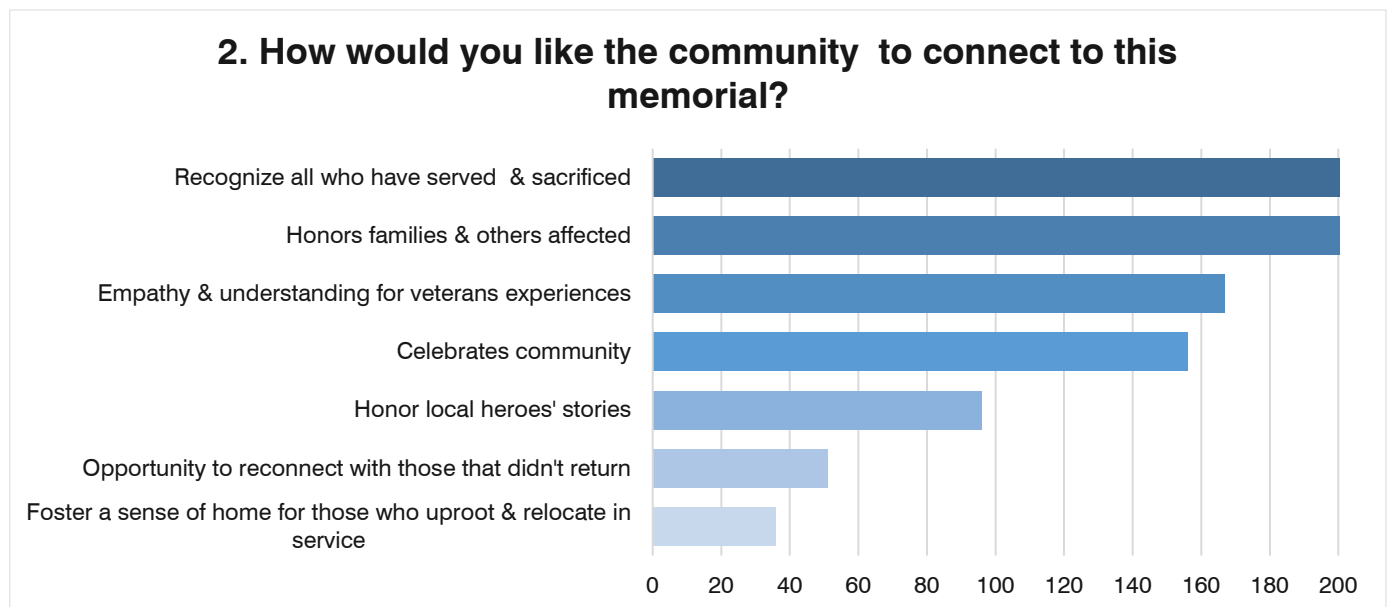
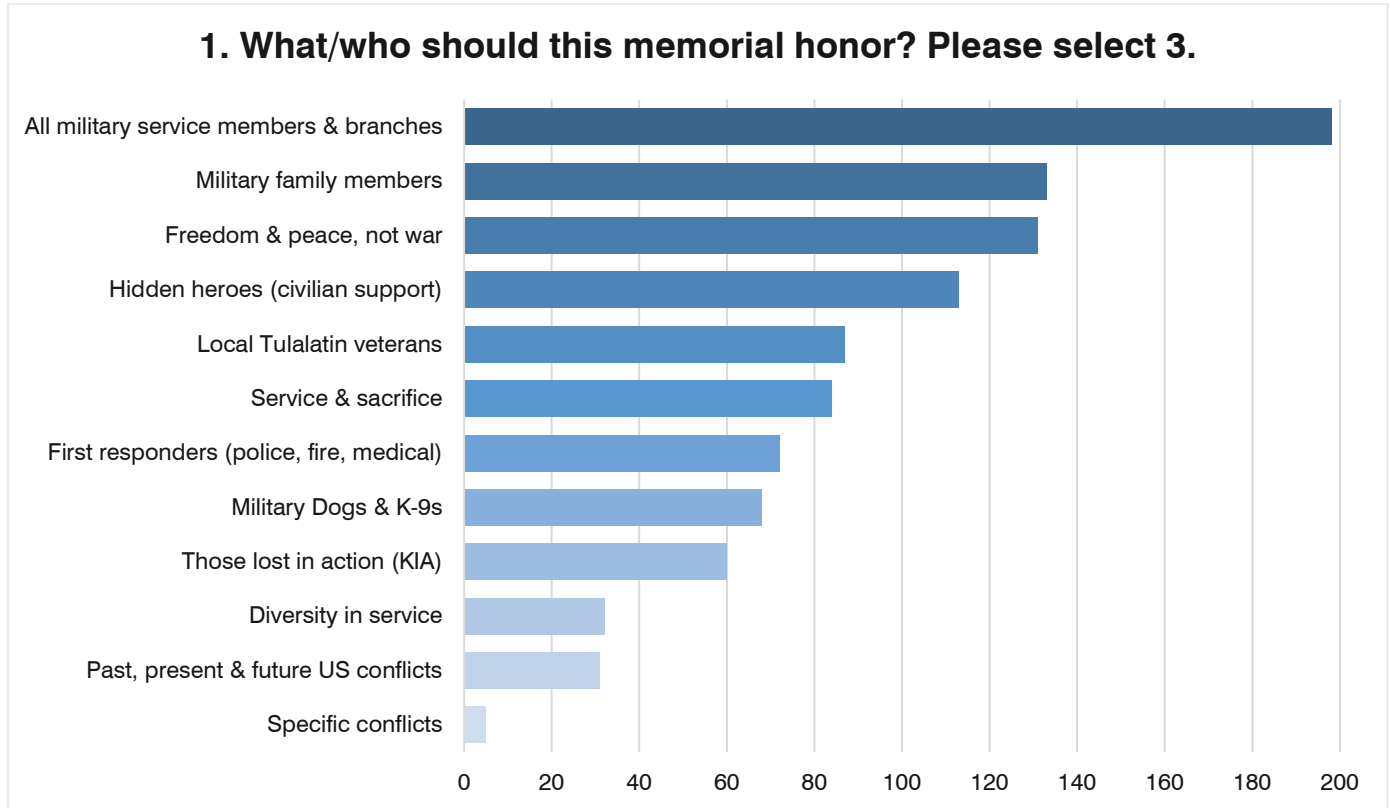
QUESTION 7

Please upload a related image/sketch that has meaning to you and explain why (we will not share the images with the public).

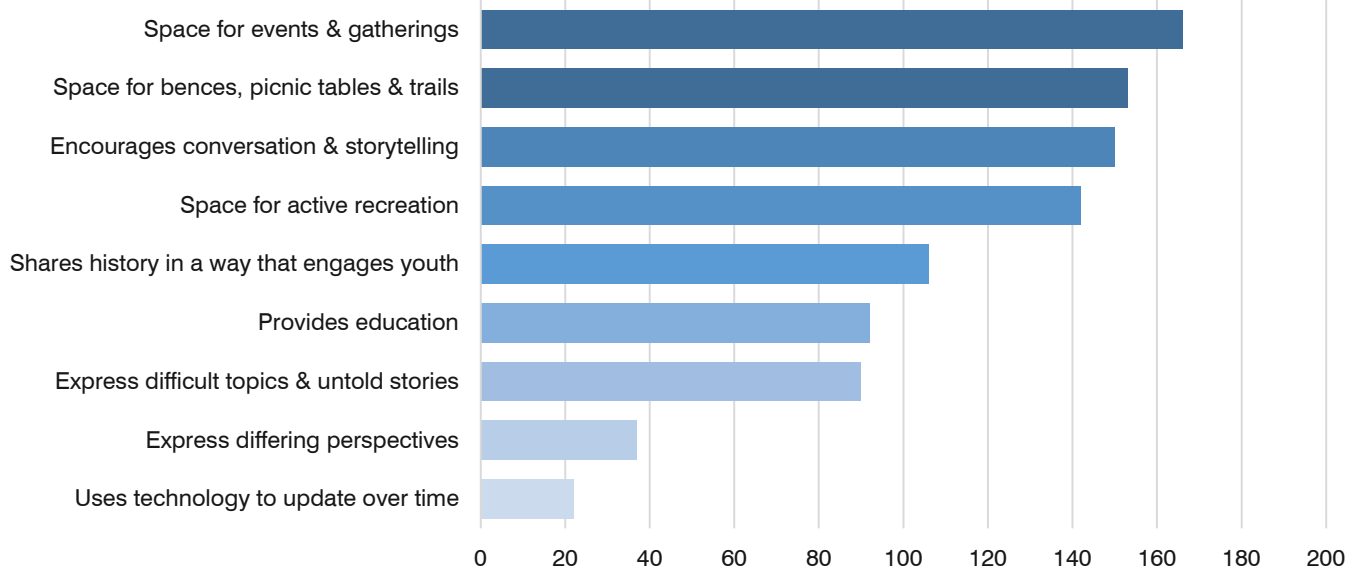
Three images were received from the public.

Survey II

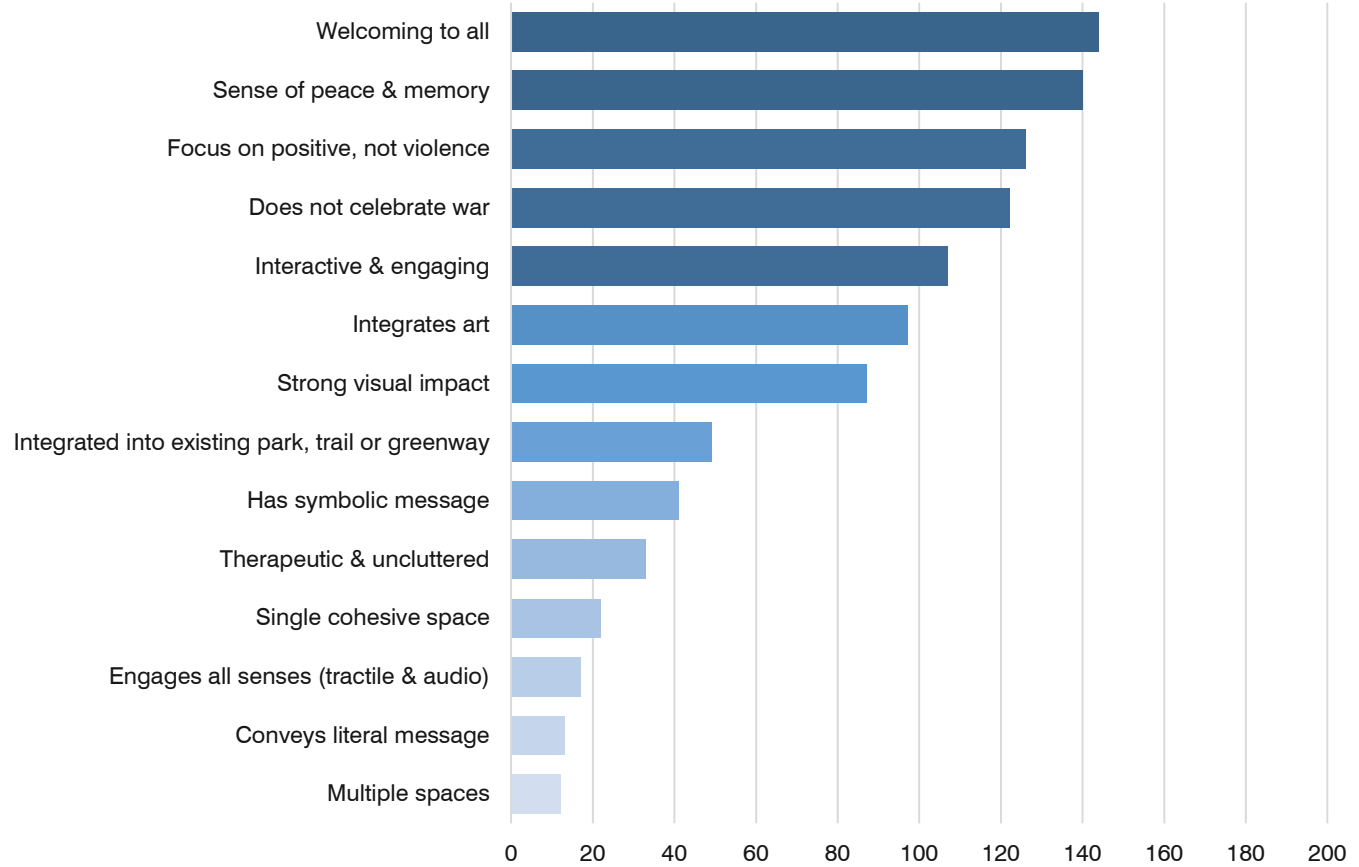
The second survey was released to the public on February 10, 2020 and remained open for three (3) weeks. The major themes with supporting design objectives (gathered from all public comment) were presented and survey participants selected their preferred design objectives and who they felt the site should honor. The survey had seven (7) questions including a space to provide additional comments. 320 people took the survey with 37 additional comments and/or questions. Additional comments have been summarized below. Detailed comments can be found in the appendices section of this report. The following were the results from the survey:



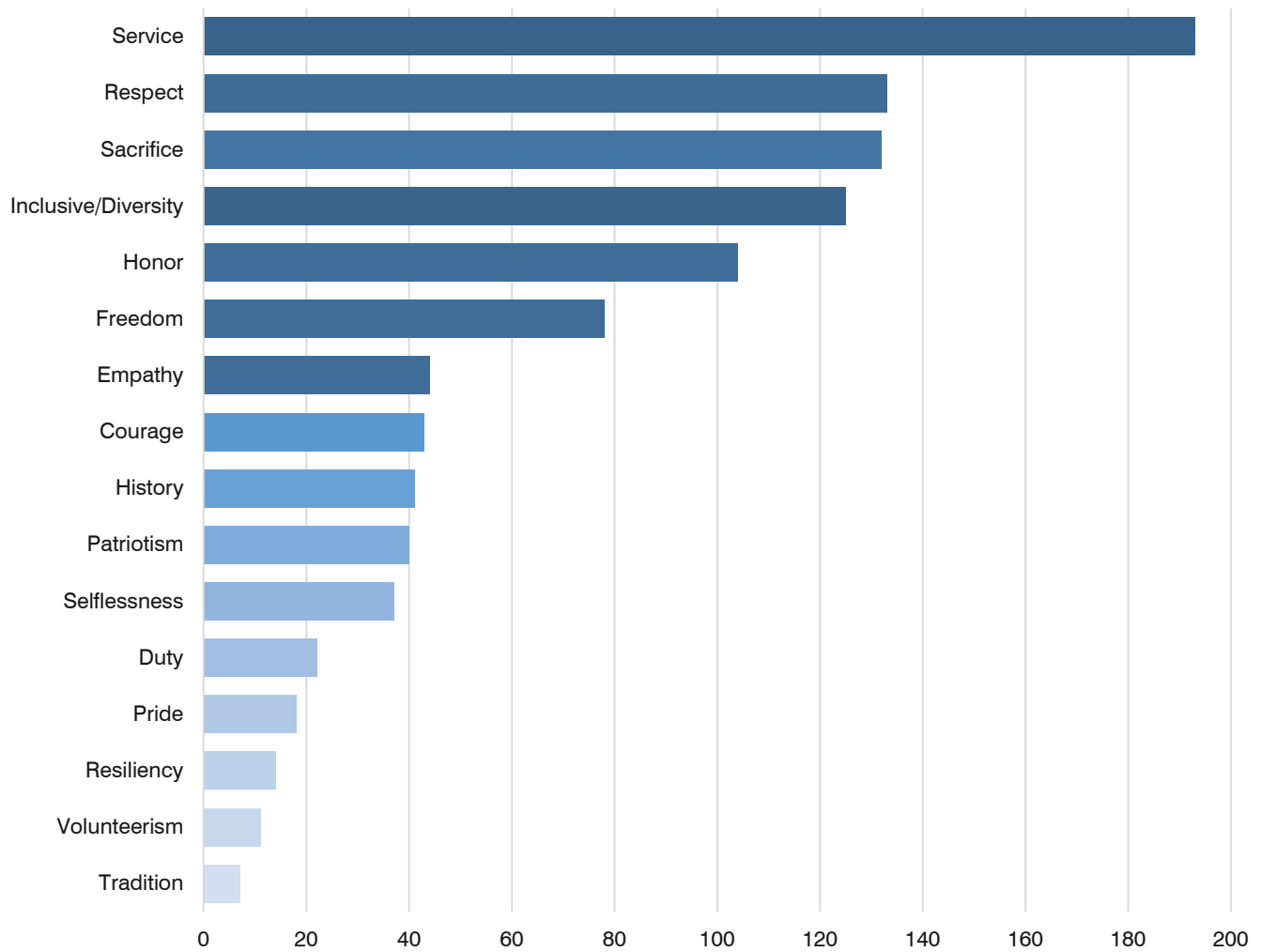
3. How should this memorial engage with people?



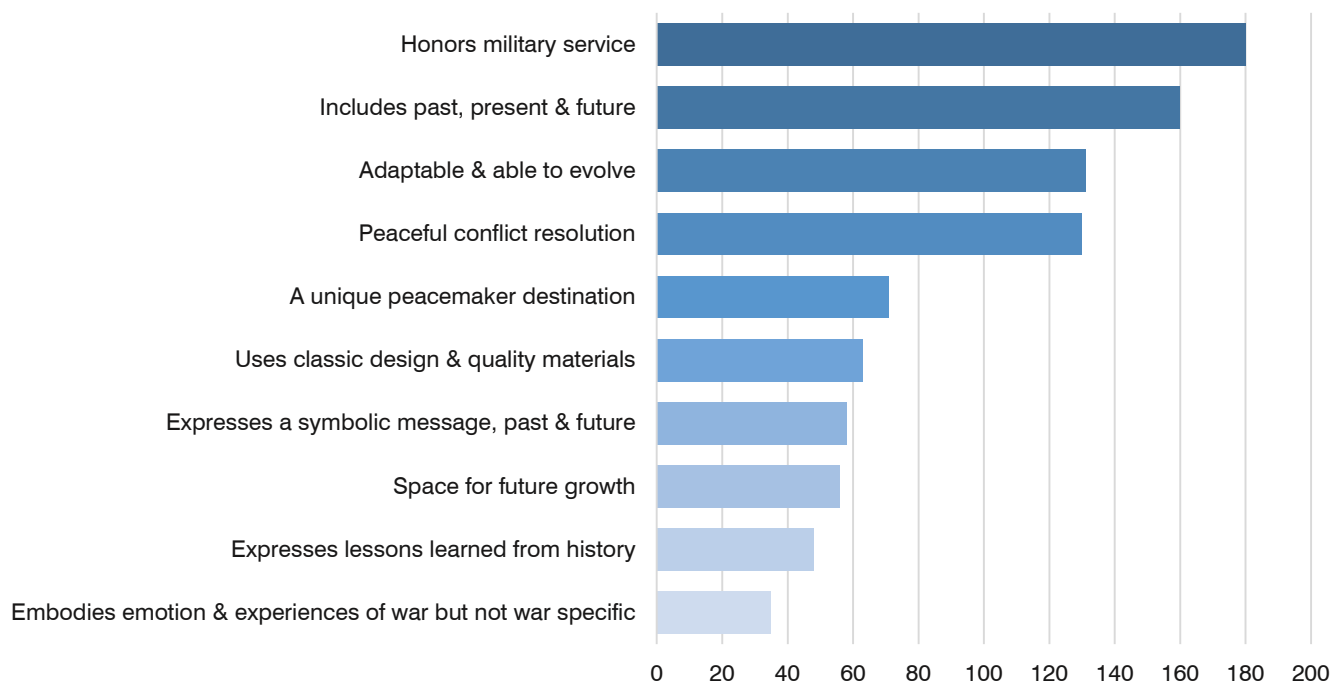
4. What experience should the memorial evoke?



5. What shared values would you like to see?



6. How should this memorial be timeless?

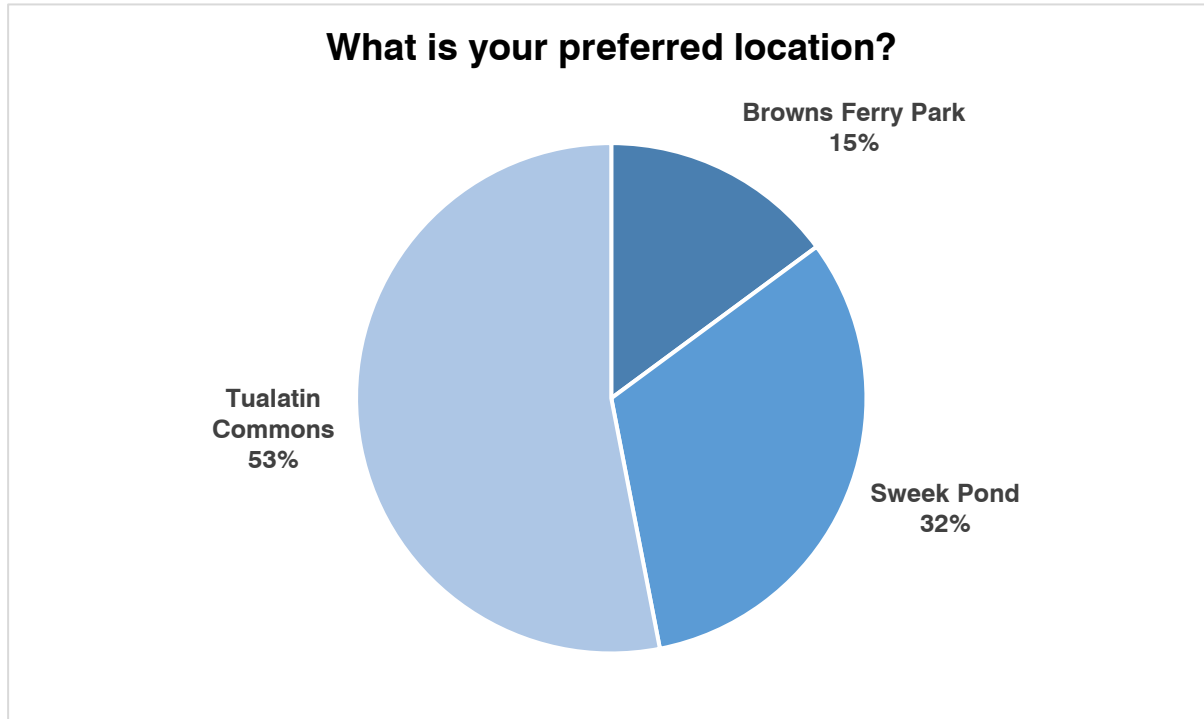


OTHER COMMENTS

- Peaceful, beautiful place with quiet spaces (5 comments)
- Thank you for honoring those who serve (4 comments)
- Money should go to helping homeless veterans/people (2 comments)
- Peace, Not War! Violence should not be glorified (2 comments)
- Stay away from politics and social engineering
- Only veterans should vote
- People should feel proud of USA, we are in the land of the free because of the brave
- The Confederated Tribes of Grand Ronde has a Veterans Board which might be able to come to the opening or support.
- Memorial for all vets, not only wartime vets
- Memorial to honor Vietnam - current veterans
- Women equal emphasis with men.
- Behind the scenes medical support veterans.
- Honor service animals within this memorial tribute.
- Recognize & Honor those who served the country from other nationalities
- The community must commit to the costs for upkeep and update in perpetuity.
- Private financing only. No Tualatin City funds
- Something that appeals to kids and teaches about history
- 2 sites- one for military and another for first responders
- Educational and patriotic.
- Instructive of our past and present freedoms and how they are preserved.
- Something with trails
- Accessible
- Parking available for folks with limited mobility
- Would not like this to get political or embrace dissidents!
- I like what Beaverton has done to honor currently serving Beavertonians. (placing banners with their name and military branch along roadways).
- Shame that, VFW, American Legion do not put up American Flags on Memorial and Veterans Day

Survey III

The third survey was released to the public on April 17th, 2020 and remained open for three (3) weeks. The survey introduced site concept diagrams for Brown's Ferry Park, Sweek Pond Natural Area and Tualatin Commons. The diagrams incorporated the site program/ design program collected at the Stakeholder Advisory Committee Meeting #3. 262 people took the survey with 79 additional comments. Additional comments have been summarized below. Detailed comments can be found in the appendices section. The following were the results from the survey:



OTHER COMMENTS

- Most comments were to reiterate their vote: Tualatin Commons (25 comments), Sweek Pond (10 comments) and Brown's Ferry Park (4 comments)
- Other comments were to say where it should NOT be: Brown's Ferry Park (5 comments) and Tualatin Commons (1 comment)
- Peace not war- needs to be respectful (8 comments)
- Great ideas and site options (4 comments)
- Thanks for allowing community to vote (4 comments)
- Thanks for honoring military/ veterans (3 comments)
- Focus needs to be on patriotism (2 comments)

Memorial Themes & Objectives

Who the Memorial should Honor

Through outreach and engagement with the community, it was clarified who the memorial should honor.

HONOR

Show respect and regard for:

- All military service members & branches
- Military family members
- Freedom & peace, not war
- Hidden heroes (civilian support)

Themes & Objectives

Through outreach and engagement with the community, five (5) core themes and associated objectives proved to be fundamental to the vision and concepts for the memorial:

CONNECTION

Sense of community and belonging; feeling that one matters; commitment to one another.

- Recognizing all who have served & sacrificed
- Honors families & others affected
- Empathy & understanding for veterans experiences
- Celebrates community

EXPERIENCE

Connection to the space by engaging the senses.

- Welcoming to all
- Sense of peace & memory
- Focus on positive, not violence
- Does not celebrate war
- Interactive & engaging

ENGAGEMENT

Captures attention and promotes active interaction with visitors.

- Space for events & gatherings
- Space for benches, picnic tables & trails
- Encourages conversation & storytelling
- Space for active recreation

SHARED VALUES

Common beliefs, ethics, concepts or principles that are important and lasting.

- Service
- Respect
- Sacrifice
- Inclusive/ diversity
- Honor

TIMELESS

Considers the past, present and future; has relevance for generations; can change over time; remains adaptable.

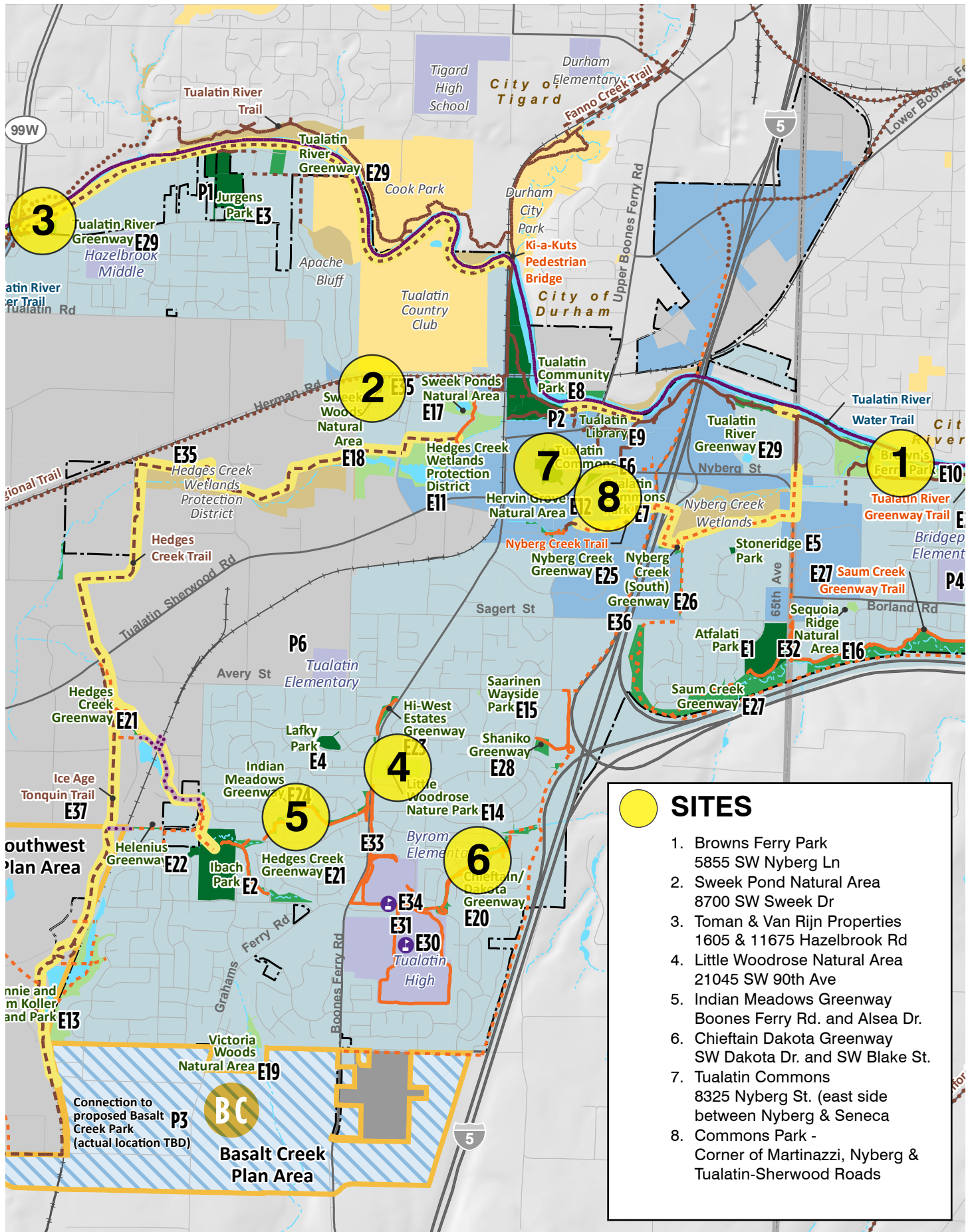
- Honors military service
- Includes past, present & future
- Adaptable & able to evolve
- Peaceful conflict resolution

Who the memorial should honor, and the themes and objectives selected, were used to create a design program for the memorial space and directly informed the site selection process.

Site Assessment

Multiple parkland and City property locations were considered and eight (8) sites advanced for consideration. The consultant team prepared site assessments for each site, with supporting documentation provided by the City. This information was presented at the Stakeholder Advisory Committee Meeting II and Community Engagement Meeting II. At these meetings, participants gave feedback on additional site information including opportunities and constraints.







Site 1: Brown's Ferry Park

5855 SW NYBERG LANE / NATURAL AREA PARK

Background Information

Brown's Ferry is a 28.33 acre natural area park located on the Tualatin River in east Tualatin. The park provides river access and passive recreation such as walking, picnicking, and wildlife viewing. Site features subtle grade changes with a variety of open greenspace, grassy fields, forest cover and habitat areas for wildlife and wetlands. The park is well used and connected to adjacent neighborhoods. Seasonally the park provides kayak rentals and a summer art program. There is on-site parking at the west end and next to the community center at the east end of the site. Site has a public restroom and water. Areas in high use have lighting and electrical.

Other Site Observations

- Probable natural area setback requirements
- Probable environmental constraints due to flood restrictions along the Tualatin River, creek and wetlands
- Surrounded by Residential neighborhoods
- Visible from Nyberg Rd; not high traffic

Future Master Plan Initiatives

- Stabilize banks of Tualatin River and Nyberg Creek with native vegetation
- Redevelop portions of Park to facilitate programs and events



SITE OPPORTUNITIES

- Wooded
- Trees/ greenery
- Site on the river with a boat dock
- Restrooms
- Lots of sites within park
- Quiet/ peaceful
- Calming
- Other reasons to visit the site
- Big spaces and open areas
- Paved surfaces
- Trail – connection within and one

SITE CONSTRAINTS

- Middle of no-where – car access only
- Willowbrook Art Camp – summer camp noise could be disruptive
- Flood risk- could have wet ground
- Isolated
- High bank – not visible

ADDITIONAL SITE INFORMATION

Tualatin City Offices / 1.2 miles by car

Access to Public Transit / 0.80 miles

Parking / Yes

ADA Accessibility / Yes

Water Access/Views / Access to Tualatin River via established boat launch, views to river, creek, on-site wetlands & ponds

Existing Pedestrian Walkways / Yes (Concrete & Soft Surface)

Tree Cover / Yes

Ambient Noise / Quiet, minor traffic (Nyberg Rd.)

High Visibility into Site / Visible from Nyberg Rd.

Close Proximity to /

- Legacy Meridian Medical Center
 - Bridgeport Elementary School
 - SW Nyberg Rd. commercial district
 - Stafford Hills Athletic Club
-

Demographics /

- Population Density: Medium density (4089/mi²)
- Nearby neighborhood at south side of Nyberg (near the hospital): high density (10,000+/ m²)
- Median Income by neighborhood: \$114,766 & nearby neighborhood: \$35,107
- Race and Ethnicity: 87.5% White, 3.8% Hispanic. 8.7% Other



Site 2: Sweek Pond Natural Area

8700 SW SWECK DR. / NATURAL PARKS & AREAS

Background Information

Sweek Pond Natural Area is a 7.91 acre site located in central Tualatin. The Trail Heritage Center is located on-site; parking is shared with the Police Department and Municipal Court. The site provides passive recreation including walking, and wildlife viewing by way of an established interpretive trail system that loops around the pond. The site is heavily wooded, with a few designated lookouts to the pond. A variety of interpretive panels showcasing “Birds! High & Low,” “An Urban Wetland,” “Tribal Homelands,” and other site features or local heritage are distributed throughout the site. No restrooms are available.

Other Site Observations

- Probable natural area setback requirements
- Probable environmental constraints due to flood restrictions along the trail
- Overlooked and in close proximity to apartment buildings, trees provide buffer in many areas of the site; path is exposed to and abuts properties along southern edge
- Opportunity to partner with Heritage Center for educational opportunities
- Ample parking in shared lot
- Walking distance from town
- Site has limited visibility from Tualatin Rd/ Sweek Dr
- No site lighting, water or electrical observed on-site



SITE OPPORTUNITIES

- Wooded
- Quiet / secluded
- Lots of parking
- Could bring life to this site
- Water/pond
- Great space next to heritage center
- Good access
- Connection w/ heritage center – on heritage center property

SITE CONSTRAINTS

- Isolated
- Lacks public transport
- Gravel pathway
- Wetlands
- Removal of tree

ADDITIONAL SITE INFORMATION

Tualatin City Offices / 0.70 miles by car

Access to Public Transit / 0.40 miles

Parking / Yes

ADA Accessibility / Yes

Water Access/Views to pond only

Existing Pedestrian Walkways / Yes (Concrete, Soft Surface)

Tree Cover / Heavily wooded

Ambient Noise / Quiet, minor vehicle traffic (SW Sweek Dr.)

High Visibility into Site / No

Close Proximity to /

- Tualatin Parks and Recreation Office
 - Tualatin Community Park
 - Van Raden Community Center
 - Police Station
 - Apartments
 - Heritage Center
-

Demographics /

- Population Density: Low 2061/ mi²
- Median Income: \$42,037 and the adjacent neighborhood is \$62,434
- Race and Ethnicity: 62.5% White, 27.1% Hispanic, 10.4% Other



Site 3: Toman & Van Rijn Property

11605 & 11675 HAZELBROOK RD / NATURAL AREAS

Background Information

Toman & Van Rijn properties is a 3.15 acre site located in Northwest Tualatin, bound by 99W to the west, Tualatin River to the north and SW Hazelbrook Rd. to the south. Site features easy river access for kayaks and canoes at establish boat launch, designated parking at trail head with additional on-street parking. The site is a mix of open space and trees. Buildings include the Tualatin Riverkeepers, a non profit organization that protects and restores the Tualatin River Watershed. No restrooms are available.

Other Site Observations

- Probable natural area setback requirements
- Probable environmental constraints due to flood restrictions along the Tualatin River
- Large open green area due to recent construction work (pipe installation?). Re-vegetation underway.
- Access to boat launch under overpass (99W)
- No site lighting, water or electrical observed on-site
- Appears to have limited use



SITE OPPORTUNITIES

- ADA accessible
- Sidewalk along side
- River with boat launch
- Trail
- Additional parking on the east side of the site

SITE CONSTRAINTS

- Accessible by car only
- No restroom
- Not visually pleasing
- Loud
- Under bridge
- Small
- School traffic
- Parking
- Access/isolated
- Noise
- Flooding
- Nothing else to do

ADDITIONAL SITE INFORMATION

Tualatin City Offices / 2.60 miles by car

Access to Public Transit / 0.60 miles

Parking / On-street and limited parking (3 spaces) at boat launch trailhead and Tualatin Riverkeepers

ADA Accessibility / Yes

Water Access/Views / Access & Views to Tualatin River via established boat launch

Existing Pedestrian Walkways / Yes (Concrete & Soft Surface)

Tree Cover / Along riverbanks and street only

Ambient Noise / Noisy due to traffic on 99W

Visibility into Site / Yes from 99W

Close Proximity to /

- RV Park, Apartments (across street)
- Toman Offices
- Hazelbrook Middle School

Demographics /

- Population Density: Low 1537/ mi²
- Median Income: \$62,434
- Race and Ethnicity: 85.6% White, 10.3% Hispanic, 4.1% Other



Site 4: Little Woodrose Natural Area

Background Information

Little Woodrose Nature Park is a 6.55-acre natural area located in central Tualatin. The site offers surrounding residential uses access to nature, shade, trails and mature vegetation. The site is densely wooded with a soft surface loop trail and a short hard surface, accessible trail on West side.

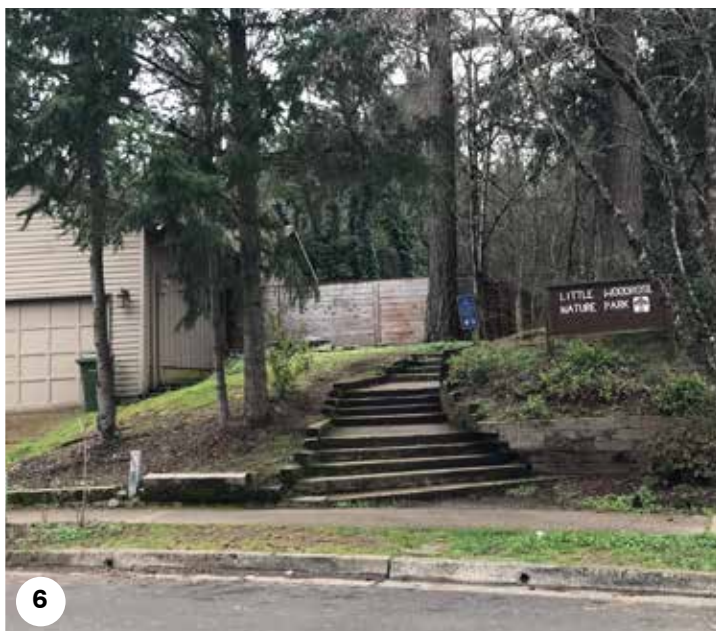
Other Site Observations

- Steep grades & stairs (must use stairs at east entrance); may make it difficult to place ADA paths without compromising natural area
- Probable environmental restrictions and sensitive areas
- Residential neighborhood at east entrance and busy road at west
- Need to explore parking (i.e.. a few spots off Boones Ferry Road?)
- Presence of invasive species that needs to be mitigated
- Trail loops close to residential properties along SE side
- Church provides access to trail

Master Plan Goals

Site recommendations for Little Woodrose Nature Park focus on stewardship to address deferred maintenance and natural area restoration and associated maintenance activities.

- Plant site with native vegetation.
- Rebuild trail, entry, and stairways throughout the park and entryways.
- Improve overall ADA access as part of all trail improvements.
- Provide safety lighting.
- Replace amenities and facilities at end of life cycle



SITE OPPORTUNITIES

- Accessible – Boones Ferry Road
- Welcoming
- Not developed - underutilized
- Public transit – Bus stop nearby
- Wooded
- Peaceful & quiet
- Scenic
- Access BF Road
- Large space

SITE CONSTRAINTS

- Not much parking
- No water access
- Might not want to disturb the natural feeling
- Elevation and slopes
- No restroom
- Most of site is not ADA accessible
- Stairs
- Boones Ferry is too busy
- You would have to pave over natural area for parking and trail
- Would cost money to upgrade
- Not a clean slate- would take a lot of work to fix
- Neighbors would be unhappy with the development
- Doesn't feel safe as there have been attacks in this park
- Drug deals in this area
- No lights

ADDITIONAL SITE INFORMATION

Distance from Tualatin City Offices / 1.70 miles by car

Access to Public Transit from Site / 0.10 miles

Parking / on residential streets at east entrance only

ADA Accessibility / No

Water Access/Views / No

Existing Pedestrian Walkways / Yes (Soft surfaces)

Tree Cover / Heavily Wooded

Ambient Noise / Very Minor Vehicle Traffic

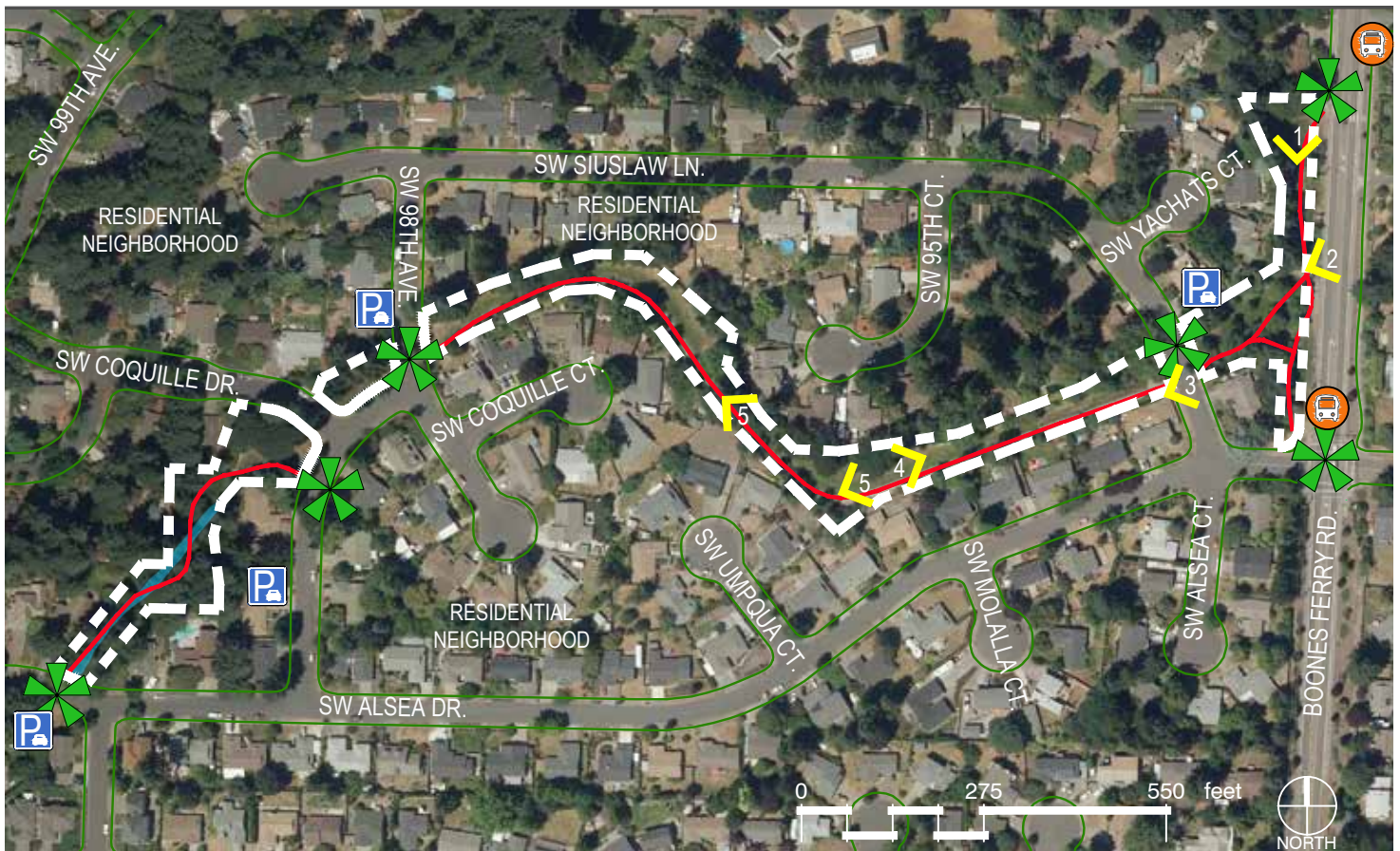
High Visibility into Site / No due to trees

Close Proximity /

- Tualatin Presbyterian Church
 - Indian Meadows Greenway
-

Demographics /

- Population Density: Med population density 6302/ mi²
- Median Income by neighborhood: \$91,713
- Race and Ethnicity: 75.3% White, 11.1% Hispanic, 13.6% Other



Site 5: Indian Meadows Greenway

Background Information

Indian Meadows Greenway is a 0.45-acre site located in Central Tualatin near Little Wood Rose Nature Park. The trail meanders through a residential neighborhood and connects to other greenways, and eventually Ibach Park. Site has a few dispersed openings throughout and a larger open green space that parallels Boones Ferry Rd.

Other Site Observations

- Minimal amenities
- Bus stop nearby
- Site is generally flat and appears to be ADA accessible



1



2



3



4



5



6

SITE OPPORTUNITIES

- A progression – could have small stations
- Flat and accessible
- Boones ferry well-traveled road

SITE CONSTRAINTS

- In backyards
- Vandalism because not well lit
- Near playground
- Boones ferry too busy
- Too residential – neighbors would not like lots of people
- Not enough pass throughs
- Not safe to have access into site for parking off Boones Ferry
- No parking lot - If buses were to come, they would have to park in residential
- No facilities

ADDITIONAL SITE INFORMATION

Tualatin City Offices / 1.70 miles by car

Access to Public Transit / 0.10 miles

Parking / On residential streets only at trail crossings

ADA Accessibility / Yes

Water Access/Views / -

Existing Pedestrian Walkways / Yes (Concrete,Soft Surface)

Tree Cover / Mix of trees and open spaces

Ambient Noise / Minor, only at street crossings & along Boones Ferry Rd.

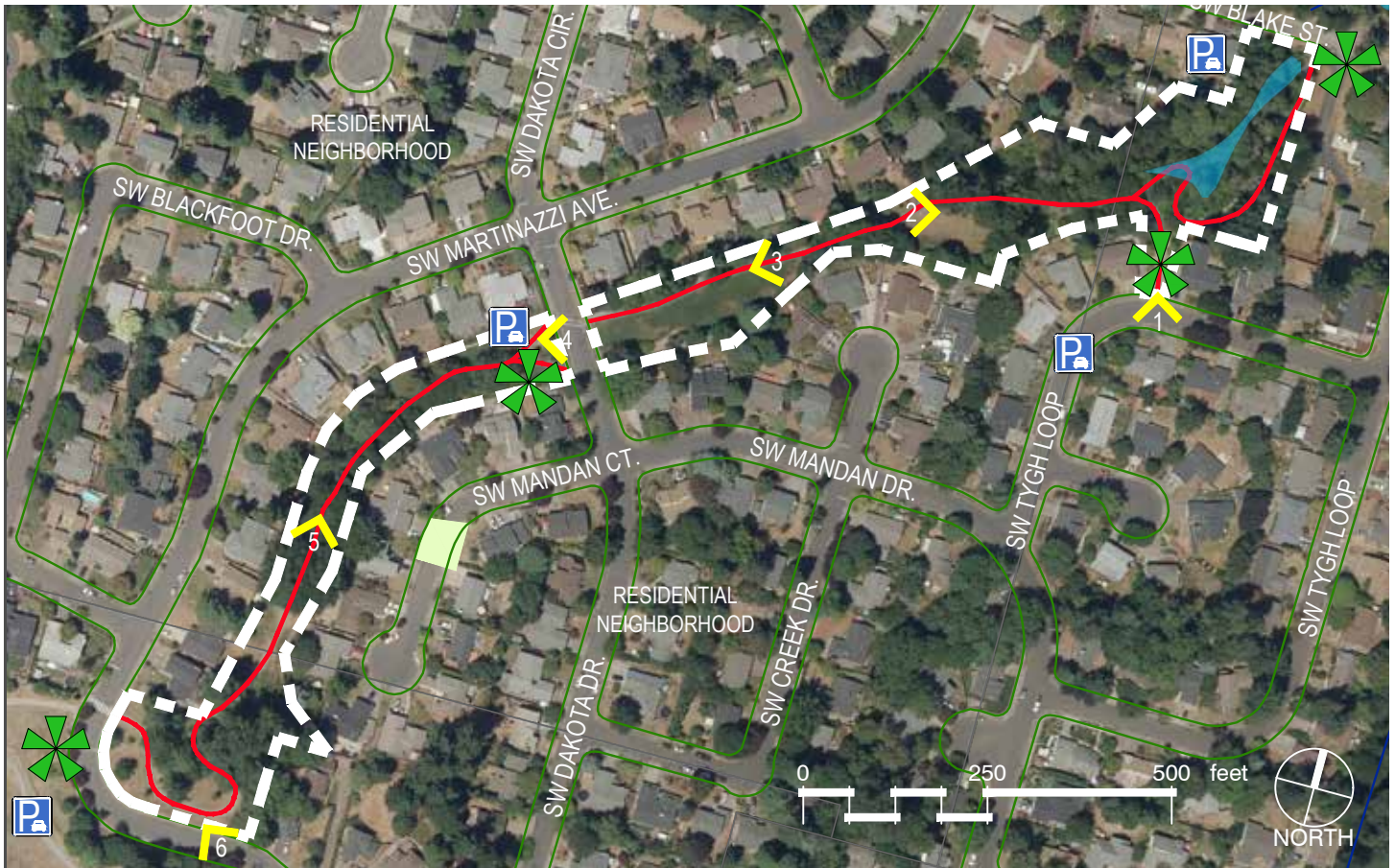
High Visibility into Site / Yes at street crossings & when paralleling Boones Ferry Rd.

Close Proximity /

- Little Woodrose Nature Park

Demographics /

- Population Density: Low 981/ mi²
- Median Income: \$88,839
- Race and Ethnicity: 78.9% White, 15.3% Hispanic, 7.8% Other



Site 6: Chieftain Dakota Greenway

Background Information

Chieftain Dakota Greenway is a 1.36 acre and 1.59 acre, 2 tax lot site in Central Tualatin. The greenway connects Tualatin High School residential neighborhoods and Blake Creek. The greenway transitions from wooded (near high school) to grassy open areas (near Dakota). For most of it's length, residential properties abut the greenway

Other Site Observations

- There might be environmental restrictions associated with creek
- Located near Tualatin High School
- Crossing at SW Dakota Dr. has been upgraded to include articulated crosswalk and removable bollards
- Located between residential properties
- Site is generally flat until SW Dakota Dr. when it gains elevation until the High School
- Creates strong connection to residential neighborhood



SITE OPPORTUNITIES

- A progression – could have small stations

SITE CONSTRAINTS

- Too linear
- Not on the beaten path
- Swamp areas - too wet in the top of the trail and the bottom
- Residential - only on street parking
- Too nestled in – it feels like people’s backyard
- No possibility for gathering space
- Students/ vandalism & misbehavior
- The path at the southern part of site is not ADA
- No public transit – have to drive
- Downhill curve is not visible
- No central area

ADDITIONAL SITE INFORMATION

Tualatin City Offices / 1.80 miles by car

Access to Public Transit / 0.60 miles

Parking / On residential streets only

ADA Accessibility / Yes

Water Access/ Views / Views to a creek

Existing Pedestrian Walkways / Yes (Concrete,Asphalt)

Tree Cover / Mix of trees and open spaces

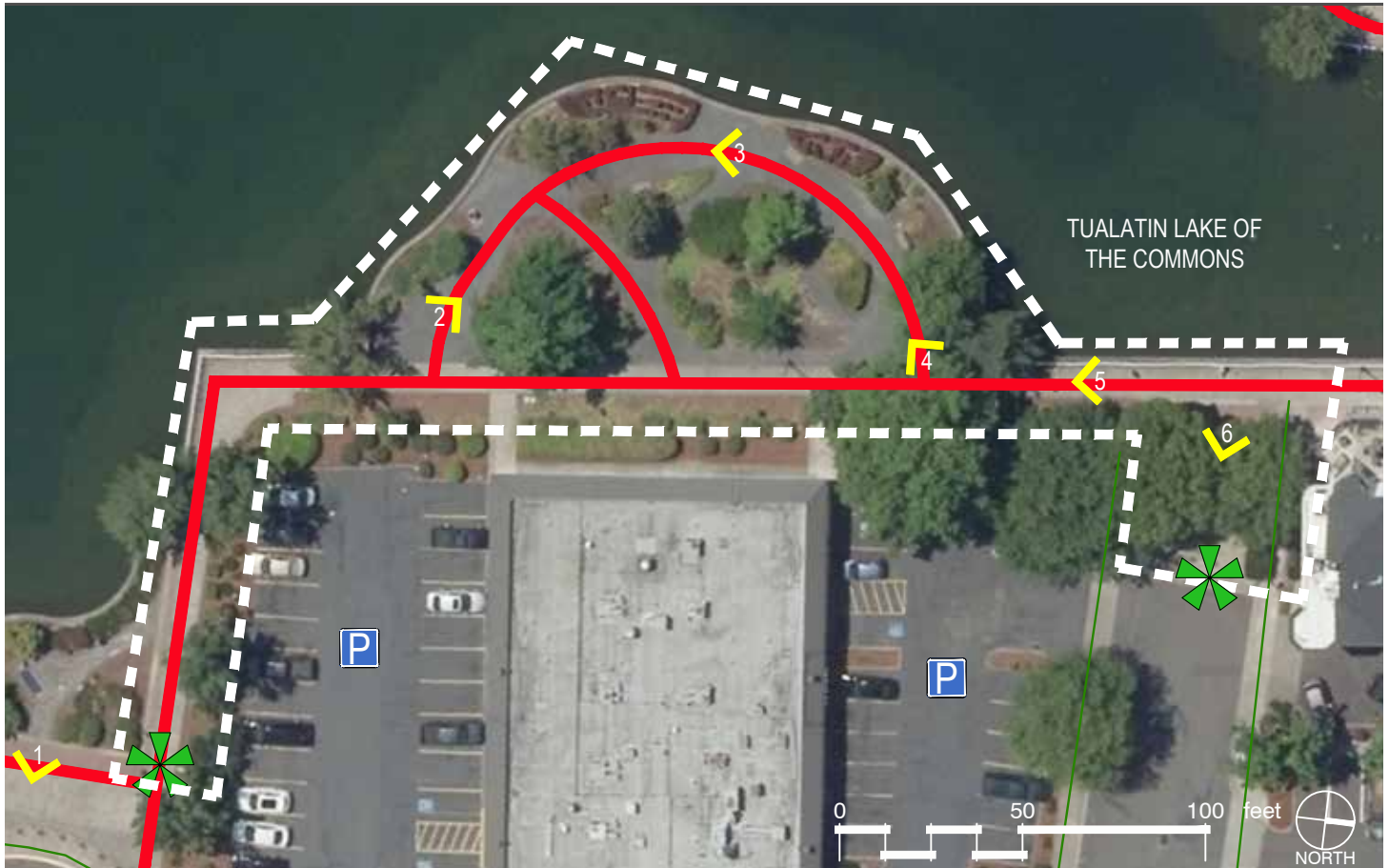
Ambient Noise / Minor, only at street crossings

High Visibility into Site / At street crossings only

Close Proximity / Tualatin High School

Demographics /

- Population Density / Low population density 1346/ mi²
- Median Income by neighborhood: \$91,713
- Race and Ethnicity: 78.9% White, 15.3% Hispanic, 7.8% Other



Site 7: Tualatin Commons

8325 NYBERG ST (EAST, BETWEEN NYBERG & SENECA) / COMMONS

Background Information

Tualatin Commons is a 5.17 acre plaza surrounding the lake in the heart of city. The Commons host many special events including Pumpkin Regatta, Starry Nights and Holiday Lights, and the Concerts and movies on the Commons. The site under consideration is located on the East side of the lake, accessed from the pedestrian walkway that loops the lake and two adjacent surface parking lots. The space overlooks the lake and has pedestrian walkways with seating and pocket plantings.

Other Site Observations

- Prominent site and heavily used with shops/restaurants nearby
- Site paving and landscaping is fatigued and needs upgrades
- Lighting and electrical hookups
- Water fountain nearby and restrooms on other side of pond

Master Plan

Site recommendations for the site focus on overall reinvestment, enhancing the fountain, and maintaining to the original design standards

- Aerate the lake or improve water circulation to upgrade water quality.
- Renovate or replace the surface, system, plumbing, and spray heads at fountain.
- Renovate, improve, and install additional restrooms and storage space.
- Consider addition of non-slip surfacing to improve pedestrian safety.
- Replace amenities and facilities at end of life-cycle.



SITE OPPORTUNITIES

- Central location
- Accessible by public transportation
- Easily accessible
- Very well attended
- Visible
- Water
- City parking lots adjacent to site
- There is a need to redevelop the entire block
- Hotel access and office buildings
- Level site
- Could consider combining commons with commons park site as a singular site
- Walking distance to library and VFW
- Easy access to other trails (Tualatin Community Park, Parks Department, etc.)

SITE CONSTRAINTS

- Too busy and hassle to get to | not conducive for peaceful/reflective space
- Loud
- Spatially small
- Walkway runs through space
- Does it fit in with core of lake? May feel intrusive if not its own thing
- Parking is difficult
- Long walk from other side of commons where accessibility is better
- No public restrooms (closest is library or other side of commons)
- Bus access and parking in adjacent lots difficult
- Needs a covered meeting space
- Lake not an asset because of what is around it; space could be a placemaker if associated an ancillary facility (i.e. building/interior space)
- Not a lot of room for expansion

ADDITIONAL SITE INFORMATION

Tualatin City Offices / .20 miles by car

Access to Public Transit / .20 miles

Parking / Ample free parking in surface lots

ADA Accessibility / Yes

Water Access/ Views / Views to Tualatin Lake

Existing Pedestrian Walkways / Yes (Concrete)

Tree Cover / Partial

Ambient Noise / Minor Nearby Vehicle Traffic

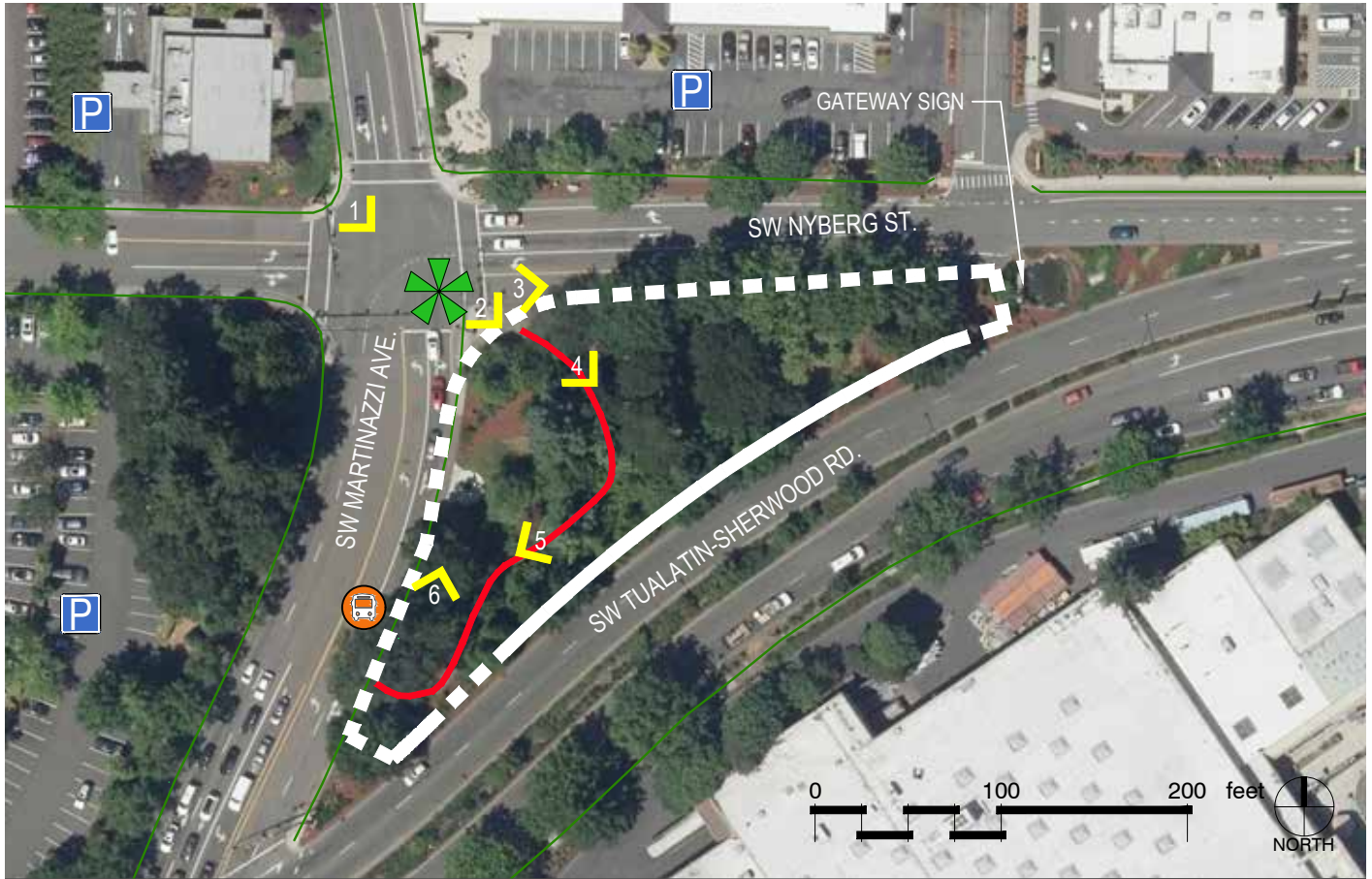
High Visibility into Site / Strong views to site from parking lots and Northern access road

Close Proximity /

- Central Business Core
 - Commons Park
-

Demographics /

- Population Density: Low population density 1278/ mi²
- Median Income by neighborhood: \$42,307
- Race and Ethnicity: 62.5% White, 27.1% Hispanic, 10.4% Other



Site 8: Commons Park

CORNER MARTINAZZI, NYBERG AND TUALATIN-SHERWOOD ROADS / COMMONS

Background Information

Tualatin Commons Park the “Gateway to Tualatin,” located near Interstate 5 along Nyberg Road. It host gateway signage, with strong visibility to traffic coming from the east. The park provides art and passive opportunities. It is bound on all sides by busy streets with two pedestrian connections at northwest and southwest corners. The site is underused, likely due to difficulty of access.

Site Observations

- Shops and restaurants nearby
- Open lots for parking nearby but very difficult to cross busy street
- Potential to explore parking along SW Nyberg Street by removing a traffic lane or taking from the site
- Bus stop at site (SW Martinazzi Ave.)
- Site paving and furnishing are fatigued
- Mature trees throughout
- First park people will see entering Tualatin

Master Plan

Site recommendations focus on maintenance, safety, and adding new touches that enhance its function as a visible gateway.

- Improve sight lines into park.
- Improve site drainage.



1



2



3



4



5



6

SITE OPPORTUNITIES

- Wooded
- Isolated and its own space - could make the whole “island” an experience
- Could remove lane and provide parking and street crossing width
- SW Tualatin-Sherwood Road is under redesign (remove divider with road expansion)
- Natural barrier at edges
- Visible, everyone knows where it is
- Opportunity to change name
- Could re-time crosswalk signals to improve access
- Strong visibility from cars
- Amenities nearby

SITE CONSTRAINTS

- Too noisy & busy (difficult to concentrate on anything)
- Limited parking immediately adjacent to site
- Access to site is difficult / hard to get to (SW crosswalk is long and scary!, long wait times, have to cross busy streets to get to)
- Air quality poor due to idling cars
- Not a strong visual connection into site, so perceived safety issues
- No room for a building
- Not a people place, better appreciation from the car

ADDITIONAL SITE INFORMATION

Tualatin City Offices / .20 miles by car

Access to Public Transit / 0 miles (on-site)

Parking / Free parking available in surface lots nearby, but no parking at site

ADA Accessibility / Yes

Water Access/Views / No

Existing Pedestrian Walkways / Yes (Concrete)

Tree Cover / Mix of trees and open spaces; more dense vegetation along streets

Ambient Noise / Loud; heavy vehicle traffic from Sherwood Rd. & Martinazzi Ave.

High Visibility into Site / vegetation limits views

Close Proximity /

- Central Business Core
 - Tualatin Commons
-

Demographics /

- Population Density: Low population density 1278/ mi²
- Median Income by neighborhood: \$42,307
- Race and Ethnicity: 62.5% White, 27.1% Hispanic, 10.4% Other

Design Program

Programming

At Stakeholder Advisory Committee Meeting III, members were guided through a programming activity to brainstorm project elements for the future memorial site. As illustrated below, the resulting design program:

1. Identifies program elements or a list of uses/improvements for the site that have physical attributes
2. Establishes metrics for program elements such as quantity or size
3. Describes spatial qualities needed to accomplish objective(s)
4. Shares design ideas of ways objective(s) can be expressed physically

Content was generated using key themes and objectives that arose from Stakeholder Advisory Committee Meetings, Community Engagement Meetings and Surveys (see example) and provided objective criteria to assess site suitability.

EXAMPLE

Objective: provide space for events & gatherings

1. Program Element: Gathering Space
2. Metric: provide a space with a capacity of 50 people standing
3. Spatial Qualities: large, flexible open space; quiet; visible
4. Design Ideas: Open lawn, plaza, etc.

Design Program

Program Elements	Metrics	Spatial Qualities	Design Ideas
Gathering space Power source Stage	50 people standing/30 people sitting	Flexible/balance size with overall space	Stage
Intimate/Passive spaces with seating	2-3 people		Benches/sequence of smaller spaces/picnic tables (maybe temp.)
Space for solitude		Quiet/reflective/calming/peaceful	Water/reflective surface/plantings/colors
Space for personal storytelling		Passive	Small stage/platform Use technology - Digital storytelling - Social media (hashtag to share an experience) Partners with library and historical society
Dedication area	Inclusive of all		Various branches of service OR general so inclusive
Recreation space		Can accommodate activities/less structured	Not a sports court/ programmable space/trails/ land nav. course

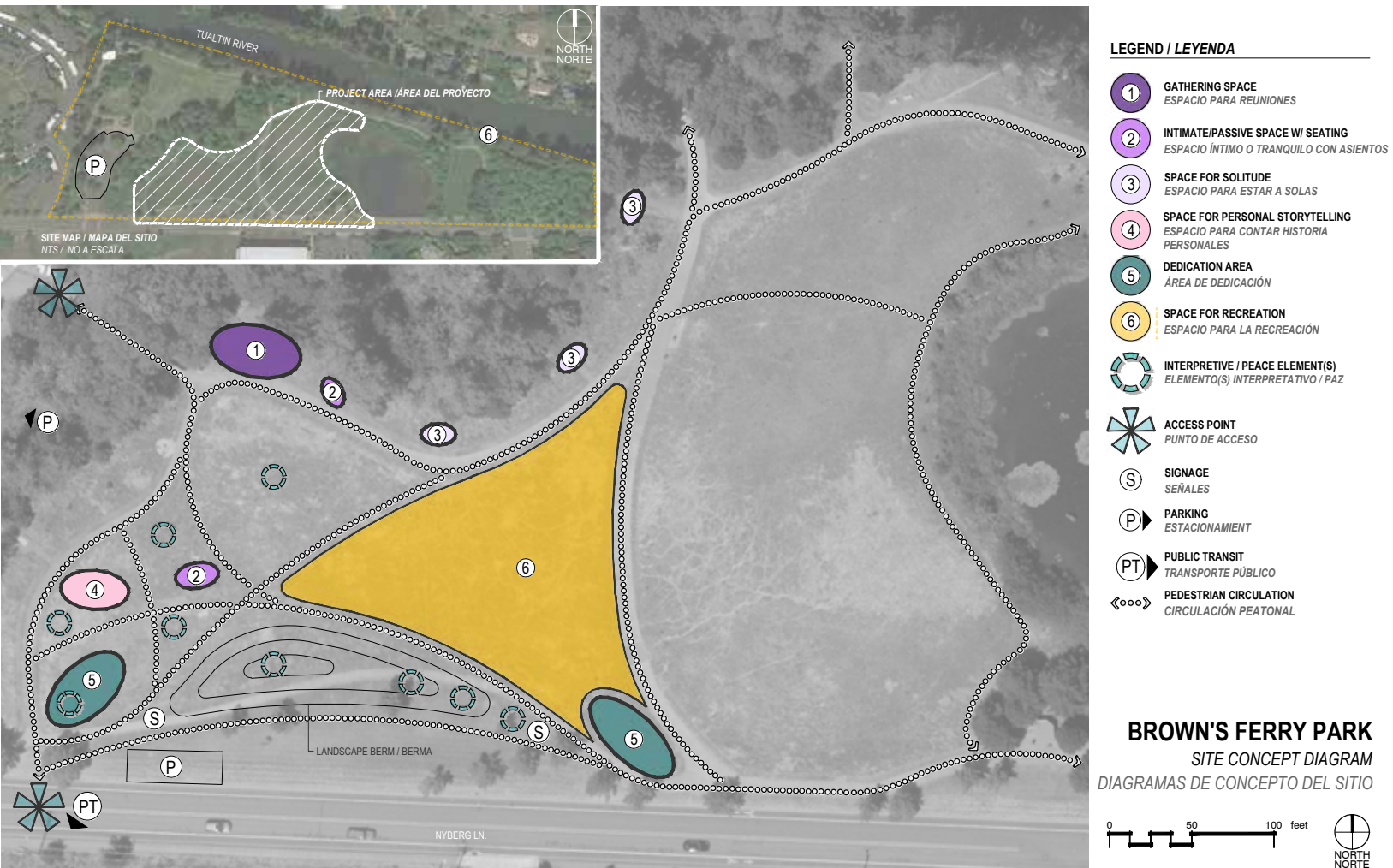
Preferred Site Selection

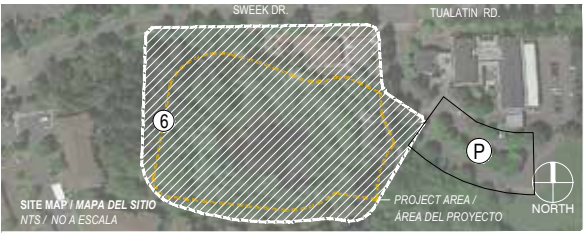
Site Concept Diagrams & Preferred Site Selection

The consultant team used the design program to assemble Site Concept Diagrams for Brown's Ferry Park, Sweek Pond Natural Area and Tualatin Commons. Diagramming is conceptual only, intended to illustrate how a site could be developed. These diagrams formed the basis of Survey III. **Survey results selected Tualatin Commons as the preferred site for a future Tualatin Veterans Memorial.**

Next Steps

This report is the "road map" to Tualatin's Veterans Memorial, clearly outlining public sentiment and what is held as important and essential to this future community space. Next steps will building on these extensive outreach findings, with the development of concept designs for the Memorial, located at the preferred Tualatin Commons site. Through this Schematic Design phase, a consultant team will conduct additional public outreach and establish design intent for the memorial. Once a preferred schematic design is selected and associated costs outlined, funding opportunities can be determined for construction documentation and installation.

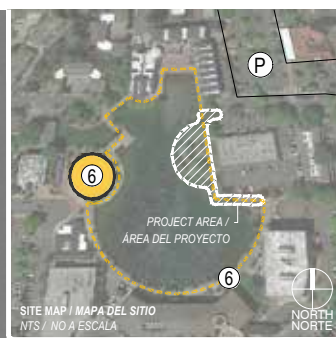
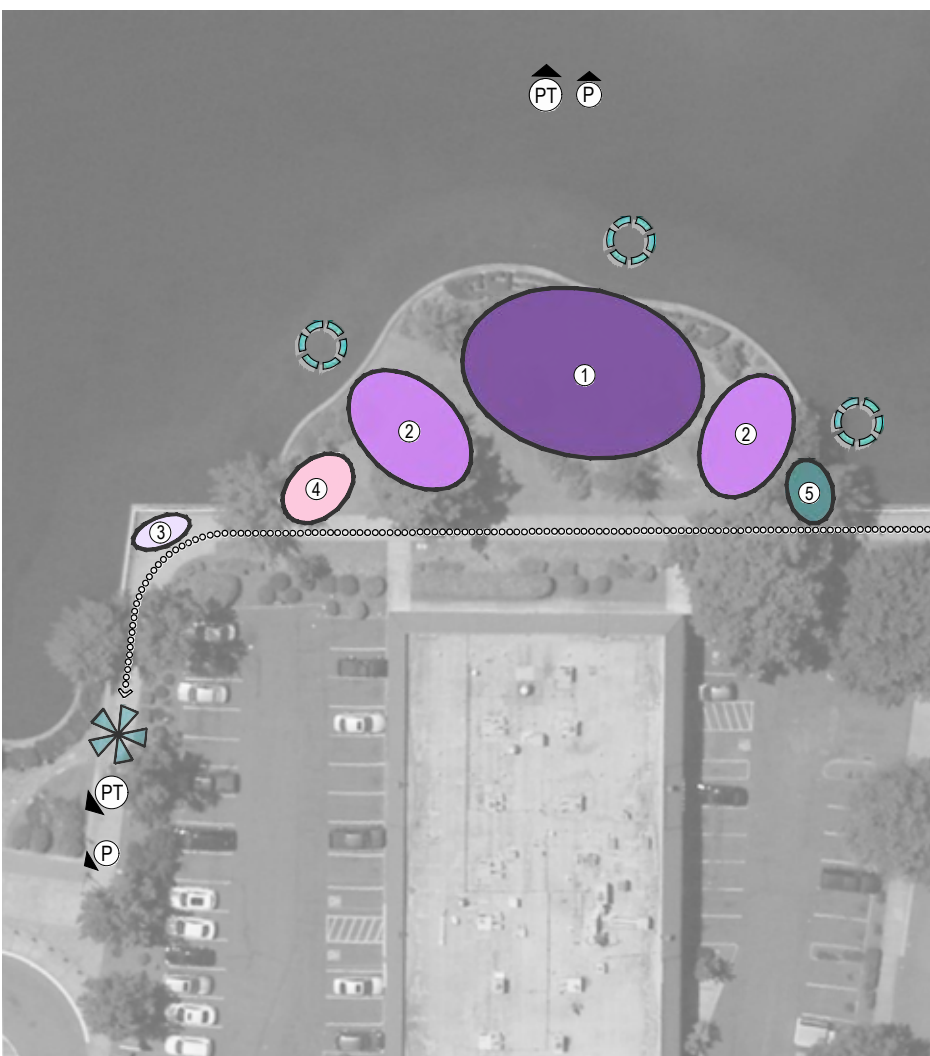
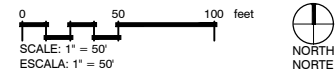




LEGEND / LEYENDA

- 1 GATHERING SPACE
ESPACIO PARA REUNIONES
- 2 INTIMATE/PASSIVE SPACE W/ SEATING
ESPACIO ÍNTIMO O TRANQUILO CON ASIENTOS
- 3 SPACE FOR SOLITUDE
ESPACIO PARA ESTAR A SOLAS
- 4 SPACE FOR PERSONAL STORYTELLING
ESPACIO PARA CONTAR HISTORIAS PERSONALES
- 5 DEDICATION AREA
ÁREA DE DEDICACIÓN
- 6 SPACE FOR RECREATION
ESPACIO PARA LA RECREACIÓN
- INTERPRETIVE / PEACE ELEMENT(S)
ELEMENTO(S) INTERPRETATIVO / PAZ
- ACCESS POINT
PUNTO DE ACCESO
- S SIGNAGE
SEÑALES
- P PARKING
ESTACIONAMIENTO
- PT PUBLIC TRANSIT
TRANSPORTE PÚBLICO
- PEDESTRIAN CIRCULATION
CIRCULACIÓN PEATONAL

SWEEK POND
SITE CONCEPT DIAGRAM
DIAGRAMAS DE CONCEPTO DEL SITIO



LEGEND / LEYENDA

- 1 GATHERING SPACE
ESPACIO PARA REUNIONES
- 2 INTIMATE/PASSIVE SPACE W/ SEATING
ESPACIO ÍNTIMO O TRANQUILO CON ASIENTOS
- 3 SPACE FOR SOLITUDE
ESPACIO PARA ESTAR A SOLAS
- 4 SPACE FOR PERSONAL STORYTELLING
ESPACIO PARA CONTAR HISTORIAS PERSONALES
- 5 DEDICATION AREA
ÁREA DE DEDICACIÓN
- 6 SPACE FOR RECREATION
ESPACIO PARA LA RECREACIÓN
- INTERPRETIVE / PEACE ELEMENT(S)
ELEMENTO(S) INTERPRETATIVO / PAZ
- ACCESS POINT
PUNTO DE ACCESO
- S SIGNAGE
SEÑALES
- P PARKING
ESTACIONAMIENTO
- PT PUBLIC TRANSIT
TRANSPORTE PÚBLICO
- PEDESTRIAN CIRCULATION
CIRCULACIÓN PEATONAL

TUALATIN COMMONS
SITE CONCEPT DIAGRAM
DIAGRAMAS DE CONCEPTO DEL SITIO

