

Transit Development Plan: Clackamas County

Q2 Top 3

Q2 Update

Clackamas County conducted a survey in June to gather public input to inform their analysis. This plan will fill in the gaps and weave together transit plans in the Regional Transportation Plan, TriMet's Service Enhancement Plan, and service plans by other transit providers like South Metro Area Regional Transit (SMART) to plan and prioritize investment. A major funding source for new transit will be through TriMet's HB 2017 Advisory Committee/Statewide Transit Improvement Fund (STIF).

Description: With seven transit service providers in Clackamas County, there are still large areas of the county with no transit service, and existing service varies in frequency, access and connectivity. To set the stage for improved and increased transit throughout the county, this plan will study the status of transit in the county and create a Transit Development Plan.

Impact to Tualatin: This will be an important overarching document through which major transit (e.g. bus, shuttle, etc.) improvements will be planned for funding and prioritized between Tualatin and Clackamas County.

Website: <https://www.clackamas.us/planning/transit>

Contact: Brett Setterfield, Clackamas County, at (503) 742-4511 or bsetterfield@clackamas.us.

Contact Tualatin: Garet Prior, Policy Analyst, at (503) 691-3020 or gprior@tualatin.gov

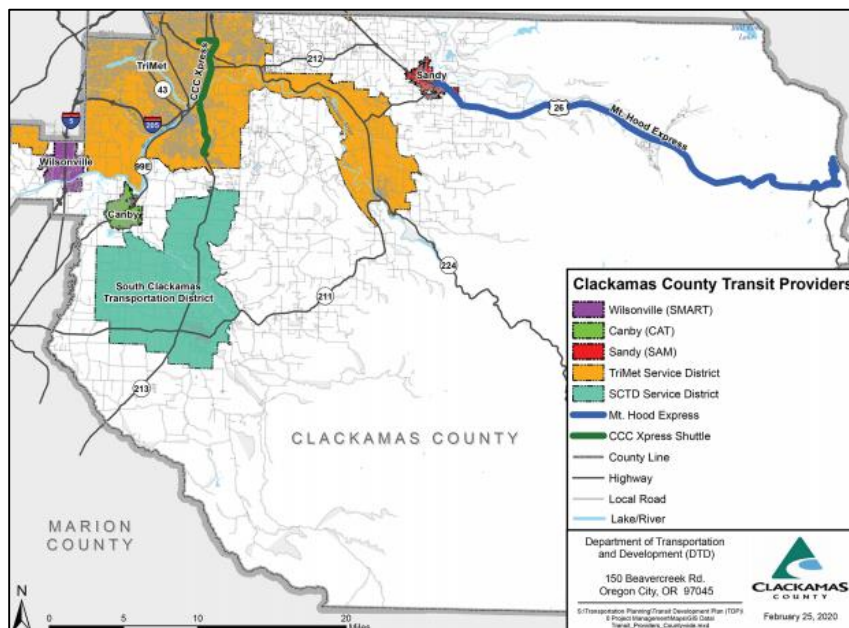


Figure 1. Image of the multiple transit providers in Clackamas County

Get Moving 2020 transportation measure: *Metro*

Q2 Top 3

Q2 Update

In July, Metro Council is finalizing the transportation investment measure for referral to the ballot for this fall. The \$3.5 million to fund a 99W corridor study is still in the measure. The proposed sources for revenue would be a vehicle registration fee and tax on business, with an exclusion for small businesses to start in 2022.

Description: By summer 2020, Metro Council will decide on whether or not to refer a multi-billion dollar transportation investment measure to voters on the November 2020 ballot.

Impact to Tualatin: If issued by Metro Council, Tualatin residents will have an opportunity to vote on a regional transportation funding measure. This funding would be necessary to build the Southwest Corridor light rail to Tualatin. It would come with additional taxes, but would establish a new source for transportation funding.

Website (project): <https://www.oregonmetro.gov/public-projects/2020-transportation-investment-measure>

Contact (project): Tyler Frisbee, Transportation Policy and Federal Affairs Manager at Metro, at (503) 797-1935 or Tyler.Frisbee@oregonmetro.gov.

Contact (Tualatin): Garet Prior, Policy Analyst, at (503) 691-3020 or gprior@tualatin.gov

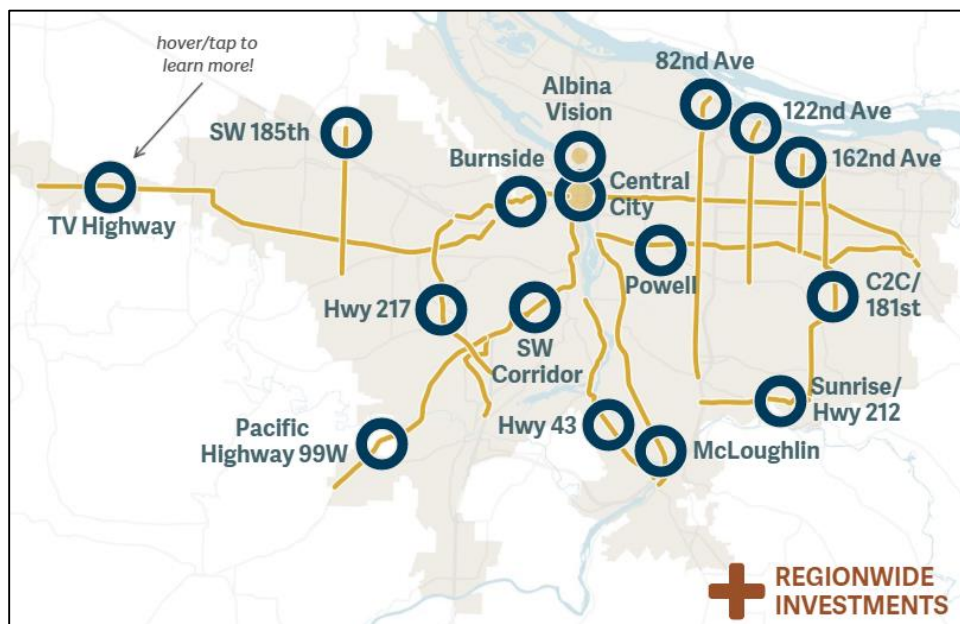


Figure 2. Map of corridors to be included in the regional measure

Highway 99W Corridor Study: ODOT, Tualatin, Tigard, King City, Sherwood, Durham, Metro, and Washington County

Q2 Top 3

Q2 Update

ODOT completed their “initial look” at a full corridor study. Early findings included the importance of this area as a regional workforce and tourism route, high safety concerns for cyclists and pedestrians, limitations of reliable travel due to congestion, and the need to serve historically marginalized communities that live in the area.

Description: A corridor study could help prioritize and direct larger efforts to achieve transformational change to meet future equity, safety, congestion, and climate smart strategy needs. For example, Tualatin’s Transportation System Plan envisioned a park-and-ride facility along 99W that would collect commuters and shift them on to public transit, thus reducing congestion on internal roads.

Impact to Tualatin: Highway 99W dissects Tualatin’s northwest corner and serves as a gateway into our major employment areas. Safety and congestion are major needs for the corridor and Tualatin residents. Tualatin Moving Forward has begun to address these needs by filling in sidewalk gaps, but larger investment is necessary to meet community needs.

Website (project):

<https://www.oregon.gov/odot/projects/pages/project-details.aspx?project=99WP>

Contact (project):

Talia Jacobson, ODOT, at talia.jacobson@odot.state.or.us or (503) 731 – 8228.

Contact (Tualatin):

Aquilla Hurd-Ravich, Community Development Director, at (503) 691-3018 or ahurd-ravich@tualatin.gov.

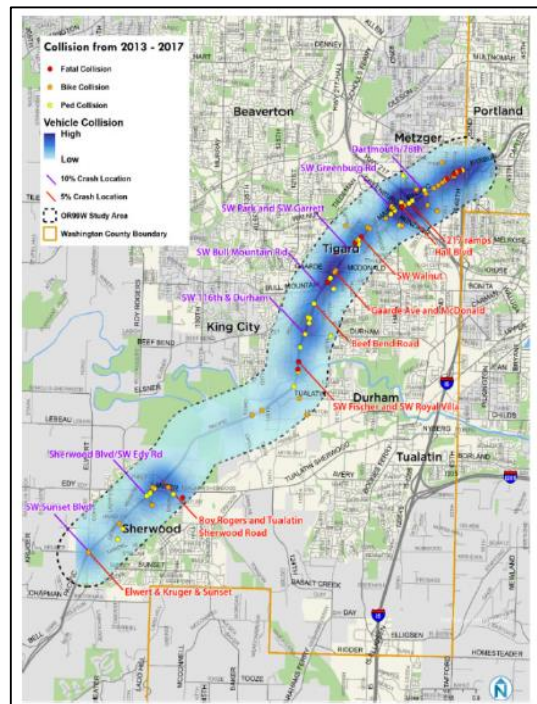


Figure 3. Collision map (2013-2017)

Southwest Corridor: *TriMet*

Active

Q2 Update: The Conceptual Design Report (CDR), which explains the design of the project, as well as the Final Environmental Impact Statement (FEIS), are in the process of being finalized for public review.

Description: An effort to establish a new 12-mile TriMet MAX line (light rail) between southwest Portland and Bridgeport Village in Tualatin (video). In addition to light rail, the plan includes roadway, bicycle and pedestrian projects, a strategy to promote equitable development in the corridor (SWEDS), and a shared investment strategy for transportation improvements that connect the corridor's communities to the proposed light rail line.

Impact to Tualatin: Major opportunities and challenges that come with new light rail. Bridgeport Transit Center is planned to serve not only locals, but as a regional hub for transportation connections.

Website (project): <https://trimet.org/swcorridor/>

Contact (project): Jennifer Koozer, Senior Community Affairs Manager at TriMet, at (503) 962-2116 or koozerj@trimet.org.

Website (Tualatin): <https://www.tualatinoregon.gov/communitydevelopment/southwest-corridor-plan>

Contact (Tualatin): Gareth Prior, Policy Analyst, at (503) 691-3020 or gprior@tualatin.gov

I-5 and I-205 Tolling Study: *ODOT*

Q2 Update: ODOT will soon be providing technical data of their initial I-205 alternatives analysis with Tualatin and other project partners. The Equity and Mobility Committee has started introductory meetings. Clackamas County is convening a policymakers and technical advisory committee to provide coordinated input into the project.

Description: ODOT will continue their process of studying tolling segments (map) on I-5 and I-205.

Impact to Tualatin: Direct impact to Tualatin residents and businesses traveling along the interstate or state highway system. Possible impact to roads with vehicles diverting from highways to avoid tolls.

Website ODOT: <https://www.oregon.gov/ODOT/Pages/VP-join-conversation.aspx>.

Contact ODOT: Mandy Putney, ODOT's Policy and Development Manager Region 1, at (503) 731-8356 or mandy.putney@odot.state.or.us.

Contact Tualatin: Gareth Prior, Policy Analyst, at (503) 691-3020 or gprior@tualatin.gov

Urban Reserves Transportation Study: *Washington County*

Q2 Update: Washington County will provide an update on the project status at the July 13, 2020, City Council work session.

Description: Washington County is planning for the urban reserve areas by getting a better idea of existing and future transportation system needs. The project is expected to create an infrastructure finance plan template to use in concept and comprehensive planning.

Impact to Tualatin: Projections for transportation infrastructure costs for the following urban reserve areas ([see map](#)): Tonquin, I-5 East-Washington County, and Ellingsen Road North. These numbers could inform or guide future urban growth boundary expansion requests to Metro.



Website (project):

<https://www.co.washington.or.us/LUT/Divisions/LongRangePlanning/PlanningPrograms/TransportationPlanning/urban-reserves-transportation-study.cfm>

Contact (project): Jessica Pelz, Senior Planner Washington County Department of Land Use & Transportation, (503) 846-3960 or jessica_pelz@co.washington.or.us.

Contact (Tualatin): Steve Koper, AICP, Planning Manager, at (503) 691-3028 or skoper@tualatin.gov.

Shuttle expansion in Tualatin: *Ride Connection*

Q2 Update: Ride Connection has completed their public engagement on the study, but is holding on plans for expansion due to economic uncertainty with the State Transportation Improvement Fund (STIF).

Description: Through HB 2017/Keep Oregon Moving Regional Coordination funding, Washington County in coordination with Ride Connection will be evaluating and funding expansion of the Tualatin Shuttle.

Impact to Tualatin: Identify specific investments or expansion areas for the Tualatin Shuttle.

Contact (project): John Whitman, Lead Service Planner, at (503) 290-3684 or jwhitman@rideconnection.com

Contact (Tualatin): Garet Prior, Policy Analyst, at (503) 691-3020 or gprior@tualatin.gov

Shuttle study connecting Tualatin to West Linn and Oregon City: *Clackamas County*

Q2 Update: Clackamas County has begun the initial phase of public engagement to better understand the needs in the corridor. A survey in English and Spanish was sent throughout the Tualatin community in June.

Description: Through HB 2017/Keep Oregon Moving Regional Coordination funding, Clackamas County will be hiring a consultant to lead a transit evaluation between Tualatin and Oregon City.

Impact to Tualatin: Identify specific investments and costs for a transit connection with West Linn and Oregon City.

Contact (project): Kristina Babcock, Clackamas County Transit Coordinator, at (971) 349-0481 or KBabcock@clackamas.us.

Contact (Tualatin): Garet Prior, Policy Analyst, at (503) 691-3020 or gprior@tualatin.gov

Regional mobility policy update: *Metro and ODOT*

Active

Q2 Update: Metro and ODOT staff are preparing examples to examine the mobility policy and Tualatin submitted several examples.

Description: Metro and ODOT have been working to begin updating the Regional Mobility Policy, which sets standards for which transportation and land use development is measured or receives investment. The planned end date is in 2021.

Impact to Tualatin: The existing mobility standards require Tualatin to have targets for reducing emissions and single-occupancy vehicles, along with levels of service are requirements. The mobility policy and new standards will have a major impact on Tualatin's ability to develop or secure transportation funding.

Website (project): <https://www.oregonmetro.gov/public-projects/regional-mobility-policy-update>

Contact (project): Kim Ellis, Metro, Principal Transportation Planner, at (503) 797-1617 or kim.ellis@oregonmetro.gov.

Contact (Tualatin): Garet Prior, Policy Analyst, at (503) 691-3020 or gprior@tualatin.gov

HB2017 Advisory Committee/Statewide Transportation Improvement Fund (STIF): *TriMet and ODOT*

Q2 Update: The HB2017 Advisory Committee is discussing the programming of discretionary funds for the FY22-24. Applications are due on November 1, 2020.

Description: Established by the HB2017/Keep Oregon Moving legislation, this is a new state fund for public transportation. There are directed and discretionary funds. For discretionary, the state legislation allocated money to TriMet to provide for the region. They established an HB2017 Advisory Committee that meets on a monthly basis to provide direction.

Impact to Tualatin: This is a possible funding source for transit investment. Although it is a state program, much of the allocation control is given to TriMet and then through the counties (Washington and Clackamas). Examples of investment are TriMet's Line 76 service increase and Ride Connection's shuttle expansion.

Website (ODOT project): <https://www.oregon.gov/ODOT/RPTD/Pages/STIF.aspx>

Website (TriMet project): <https://trimet.org/meetings/hb2017/index.htm>

Contact (project): Tom Mills, TriMet's Manager of Service Planning and Development, at millst@trimet.org.

Contact (Tualatin): Garet Prior, Policy Analyst, at (503) 691-3020 or gprior@tualatin.gov

First-last mile transportation study: *Washington County*

Less Active

Description: The First and Last Mile study will provide information on how to improve connections between transit and commuter destinations. The project will result in recommendations for infrastructure investments and ideas on how to integrate mobility or new technology options. Tualatin's downtown WES station was selected as one of 10 finalist locations that will receive the full analysis.

Impact to Tualatin: Possible source for identifying transportation improvements to secure funding.

Website (project):

<https://www.co.washington.or.us/LUT/Divisions/LongRangePlanning/PlanningPrograms/TransportationPlanning/first-and-last-mile.cfm>

Contact (project): Dyami Valentine, Washington County Department of Land Use & Transportation Senior Planner, at (503) 846-3821 or dyami_valentine@co.washington.or.us.

Contact (Tualatin): Garet Prior, Policy Analyst, at (503) 691-3020 or gprior@tualatin.gov

BUILD grant for Basalt Creek parkway extended: *Washington County*

Description: This project is intended for design of the Basalt Creek Parkway extension between Grahams Ferry and Boones Ferry roads. Basalt Creek Parkway will be a five lane arterial with bicycle and pedestrian facilities, drainage and street lighting. The project includes a bridge across Sealy Ditch and a new signalized intersection at Boones Ferry Road.

Impact to Tualatin: As identified in the transportation study for the Basalt Creek Concept Plan, the transportation connection between Grahams Ferry and Boones Ferry roads is needed for circulation and connectivity.

Website (project):

<https://www.co.washington.or.us/LUT/TransportationProjects/basaltcreekparkway.cfm>

Contact (project): Erin Wardell, Washington County, at 503-846-3876 or erin_wardell@co.washington.or.us.

Contact (Tualatin): Aquilla Hurd-Ravich, Community Development Director, at (503) 691-3018 or ahurd-ravich@tualatin.gov.

I-205 widening and Abernathy Bridge replacement: *ODOT and Clackamas County*

Description: ODOT's I-205 Widening and Seismic Improvements Project will add a third lane in each direction and upgrade the Abernathy Bridge and the eight other I-205 bridges in the project area to withstand a major earthquake. As of April 2020, funding has not been secured for construction.

Impact to Tualatin: In addition to the transportation benefits for Tualatin, elements of the Stafford area planning agreement are coordinated with I-205 widening completion.

Less Active

Website (project): <http://www.i205corridor.org/>

Contact (project): Ellen Sweeney, ODOT Community Affairs Coordinator, at (503) 731-8230 or ellen.sweeney@odot.state.or.us.

Contact (Tualatin): Gareth Prior, Policy Analyst, at (503) 691-3020 or gprior@tualatin.gov

Road Standards Update: *Washington County*

Description: Washington County is updating their road design standards to better achieve community priorities and aspirations. The expected completion is summer of 2021.

Impact to Tualatin: Key roads within Tualatin are owned and maintained by Washington County (Grahams Ferry, 124th, Tualatin-Sherwood, Lower Boones, and 65th). Standards for roads plays a key role in future planning and through development permitting.

Website (project):

<https://www.co.washington.or.us/LUT/Divisions/LongRangePlanning/PlanningPrograms/TransportationPlanning/road-design-standards.cfm>

Contact (project): Erin Wardell, Principal Planner, Washington County, at (503) 846-3876 or Erin_Wardell@co.washington.or.us.

Contact (Tualatin): Gareth Prior, Policy Analyst, at (503) 691-3020 or gprior@tualatin.gov.

Statewide Transportation Improvement Program (STIP) project list: *ODOT*

Description: ODOT's capital improvement plan for all state and federally funded projects.

Impact to Tualatin: This is a funding source for transportation investment on state roads.

Website (project): <https://www.oregon.gov/ODOT/STIP/Pages/About.aspx>

Contact (project): Mandy Putney, ODOT Policy and Development Manager Region 1, at (503) 731-8356 or mandy.putney@odot.state.or.us.

Contact (Tualatin): Gareth Prior, Policy Analyst, at (503) 691-3020 or gprior@tualatin.gov

Bus on Shoulder Study: *ODOT and TriMet*

Description: TriMet and ODOT will study "freeway express service" using bus on shoulder. The primary goal of the project is to determine where the market is for express and limited stop service.

Impact to Tualatin: This could be a huge benefit to Tualatin to increase TriMet or SMART bus speed and reliability along existing routes, as well as open a path for new connections (e.g. Oregon City).

Website (project): None at this time.

Contact (project): Rory Renfro, ODOT's Transit and Major Projects Principal Planner, at (503) 731-8245 or rory.j.renfor@odot.state.or.us and Tom Mills, TriMet's Manager of Service Planning and Development, at millst@trimet.org.

Contact (Tualatin): Gareth Prior, Policy Analyst, at (503) 691-3020 or gprior@tualatin.gov