



Homelessness Update

April 14, 2025

Megan Cohen, Homelessness City/County Liaison

Agenda

- Definitions & Data
- Street Outreach: Stories of Impact in Tualatin
 - Caleb Peterson, Just Compassion of EWC
 - Lucy Simmons, HomePlate Youth Services
- Six Month Update
 - Point-in-Time Count
 - Inclement Weather
 - Metro SHS Reform
 - New Resources
- Discussion & Questions



CITY of
TUALATIN

Definitions

- Homelessness is defined as: “Lacking a fixed, regular, and adequate nighttime residence;” for example, living in a shelter, car, or tent -U.S. Department of Housing and Urban Development (HUD)
- Same as above or sharing housing by necessity rather than choice– “doubled-up” - U.S. Department of Education
- Person-first language, e.g: Person experiencing homelessness/houselessness



CITY of
TUALATIN

Data

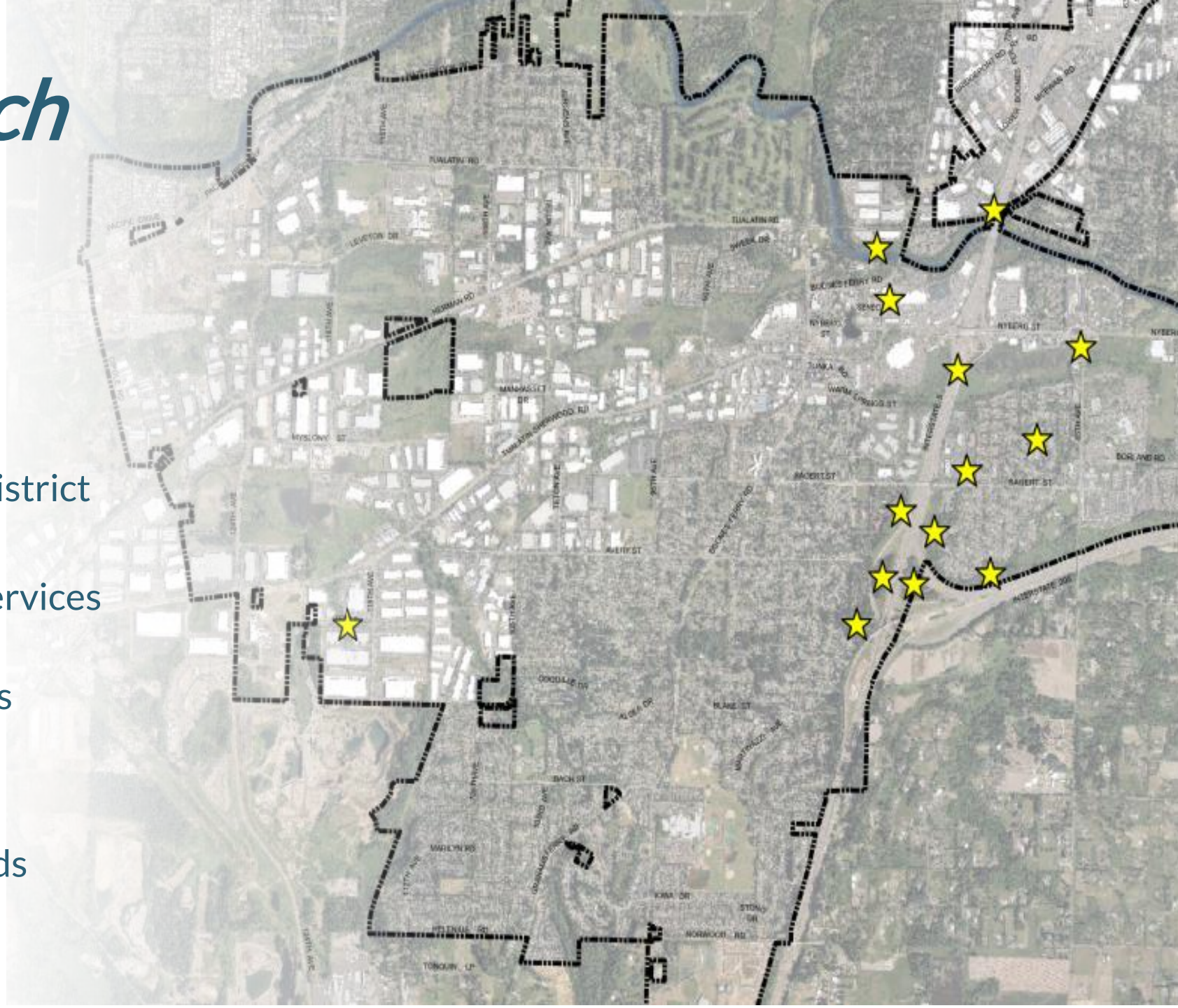
- Main cause of homelessness is not being able to afford housing
 - No single estimate is comprehensive or fully accurate
 - Populations that are showing drastic increases include families with children (+124%) and seniors (20% are 55+)
- **526 Youth** experiencing homelessness in the Tigard-Tualatin School District 2023-24
 - Motel: 44 | Shared: 406 | Shelter: 47 | Unsheltered: 0
 - **773 Individuals** experiencing homelessness in the Point-in-Time Count for Washington County in January 2023
 - Sheltered: 543 | Unsheltered: 230 (30%)



CITY of
TUALATIN

Street Outreach in Tualatin

- Resources & Referrals
 - Tualatin Police
 - Tualatin Library
 - Tigard/Tualatin School District
- Partner agencies
 - Department of Human Services
 - Washington County SHS
 - Faith-based organizations
 - & more!
- Housing navigation
- Serving Tualatin-specific needs



Six Month Update

• Point-in-Time Count

- January 22, 2025
- Thanks to Tualatin staff for tabling in the Library!
- Data is compiled by PSU for the tri-county region and reported to HUD; available later this year
- Expect to see an increase in homelessness

• Inclement Weather

- Four activations in the first six weeks of the year
- Last activation lasted one week due to snow/ice
- Two severe weather shelters: Beaverton Community Center and Blanton St. Building (Hillsboro) Transportation available

• Metro SHS Reform

- Goal is now for the November ballot
- Workgroup was formed to “explore a North Star and regional key performance indicators (KPI) and to discuss data needs.”
- Washington County municipal representatives are Beaverton Mayor Lacey Beaty and Sherwood Mayor Tim Rosener



New & Upcoming Resources

- Just Compassion opened their **Shelter & Resource Center** on March 24, 2025, providing 60 beds, three meals a day, peer support and mental health services, showers, & more!
- The **Hillsboro Year-Round Shelter** broke ground and is planning to open for Winter 25-26. They will provide 75 beds and coordinated services.
- The **Tigard Safe Parking Program** has added a second site, serving six households at a time. The program has housed three households since it started in Sept 2024.
- The Center for Addictions Treatment & Triage will provide 86 treatment beds, a peer drop-in center, crisis services, detox, & more. **The Hillsboro Recovery Center** will open June 2025 and the Beaverton Recovery Center in 2026.
- **Sharps containers** will be provided publicly through a partnership with Metro, with one box anticipated to be placed at the Tualatin Community Park.



CITY of
TUALATIN

1. Questions?
2. Reflection and Dialogue
 - What did you hear that was surprising?
 - What was something you would like to learn more about?



CITY *of*
TUALATIN