



2045 Transportation System Plan

PTA25-0001/PMA25-0001

July 14, 2025– City Council Work Session

Agenda



- TSP summary
- Overview of supporting amendments
- Approval criteria
- Public comments
- Discussion / Recommendation



TSP Summary

What is a Transportation System Plan?

- Inventories the transportation system to study gaps in existing infrastructure
- Identifies goals, policies, programs, and projects to meet Tualatin's transportation needs over a 20-year period
- A required document for all cities and counties in Oregon, which includes conformance with state and regional rules and regulation



Public Outreach



Public Outreach



What did we hear during public engagement?

- Investment in safe walking/ biking routes to school is a priority.
- Expand coverage and frequency of transit within Tualatin and to Sherwood, Newberg, and Wilsonville.
- Desire to improve street and trail lighting.
- Concerns over traffic congestion and signal timing.

OUTREACH BY THE NUMBERS

Open Houses	2
In-Person Outreach Events	7
Focus Groups	6
Website Visitors	2,000
Interactive Map Contributions	987
Survey Responses	471

TSP Summary



What Goals did the TSP identify?

Supported by policies that enhance connectivity, safety, and accessibility across Tualatin's transportation network.

1

Advancing Our Land Use Vision

Create a transportation system that enhances Tualatin's economy and land use vision while managing a balanced network for all users.

2

Providing a High Quality of Life

Ensure safe and efficient movement of people and goods, particularly for historically marginalized communities.

3

Expanding Opportunities for Safe Multi-Modal Transportation

Improve options for walking, cycling, and accessing transit for users of all ages and abilities.

4

Advancing Climate and Health Goals

Reduce greenhouse gas emissions and support climate action initiatives through sustainable transportation practices

5

Investing Wisely

Maximize funding by maintaining existing assets and leveraging external funding opportunities.

TSP Summary



What are the elements of the transportation network?



**Pedestrian
Network**



**Bicycle
Network**



**Transit
Network**



**Vehicle
Network**

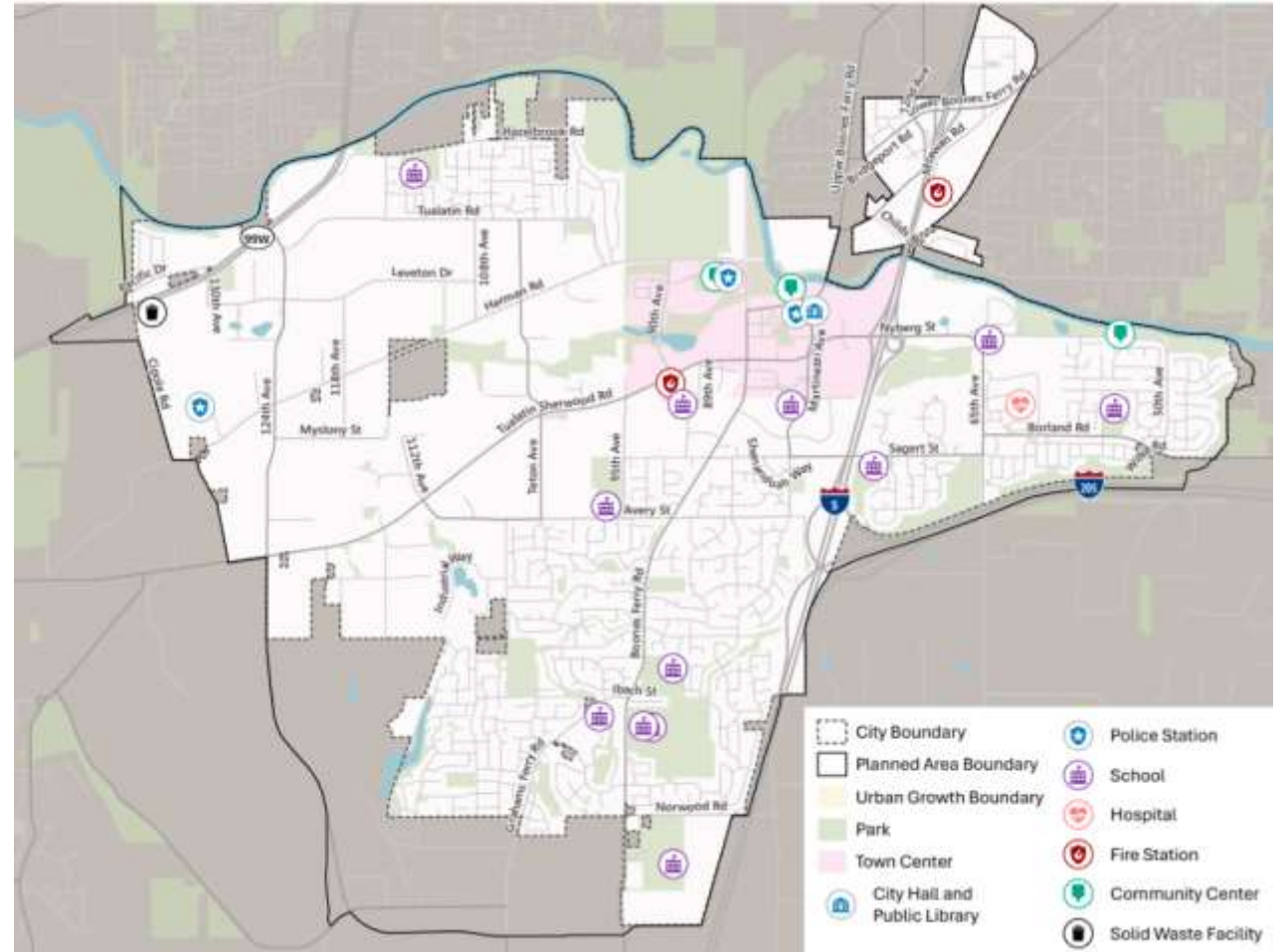
TSP Summary

How were projects identified?

- Fill infrastructure gaps that connect the community to key destinations
- Balanced the needed financial commitment & available funding source

What projects were identified?

- 116 total projects
 - Complete Streets (*bottleneck/safety*)
 - Active Transportation
 - Transit



Example Projects



Complete Street:
*Grade-separate Tualatin-Sherwood from
Boones Ferry / railroad*



Active Transportation:
Nyberg Creek Trail and I-5 crossing

Supporting Amendments



CHAPTER / TITLE	PROPOSED AMENDMENT
Comprehensive Plan Chapter 8	<ul style="list-style-type: none">• Updates to transportation network goals and policies
Development Code Chapter 31 General Provisions	<ul style="list-style-type: none">• Updates definitions related to transportation
Development Code Chapter 36 Subdivisions	<ul style="list-style-type: none">• Adds access standards for public alleys
Development Code Chapters 38, 39, 51, 73A, 73G Development Standards	<ul style="list-style-type: none">• Minor updates to match street designations in TSP
Development Code Chapter 73B Landscape Standards	<ul style="list-style-type: none">• Corrects figure error for Vision Clearance
Development Code Chapter 74 Public Improvement Requirements	<ul style="list-style-type: none">• Reorganized for readability• Clarifies performance standards required under state law• Addresses updated street designations in TSP
Development Code Chapter 75 Access Management	<ul style="list-style-type: none">• Reorganized for readability

Supporting Amendments



MAP / TITLE		PROPOSED AMENDMENT
8-1	Functional Classification & Traffic Signals	<ul style="list-style-type: none">• Updates street designations• Updates to proposed traffic signals
8-2	Metro Regional Street Design System	<ul style="list-style-type: none">• Updates to match Metro's transportation plan
8-4	Bicycle and Pedestrian Plan	<ul style="list-style-type: none">• Updates to complete network
8-5	Transit Plan	<ul style="list-style-type: none">• Updates to strengthen system
8-6	Freight Plan	<ul style="list-style-type: none">• Updates to match Metro's transportation plan
App B	Figures	<ul style="list-style-type: none">• Minor changes to figure references• Updates to street design standards

Approval Criteria



- Statewide Planning Goals
- Oregon Administrative Rules (OAR)
 - Including OAR 660 Division 12
- Oregon Highway Plan
- Metro Code
- Tualatin Development Code:
 - Chapter 33.250 Type IV-B
 - Chapter 33.070 Plan Amendments



Findings

Will be provided with final adoption materials:

- Demonstrate that state, regional, and local criteria are met
- Demonstrate compliance with Tualatin Comprehensive Plan, including other plans adopted by reference such as Basalt Creek Concept Plan, Parks Master Plan, and Stormwater Master Plan



ANALYSIS AND FINDINGS TRANSPORTATION SYSTEM PLAN

June 11, 2025

Case #:	PTA25-0001/PMA 25-0001
Project:	Transportation System Plan
Procedure:	Type IV-B, Legislative

TABLE OF CONTENTS

I.	INTRODUCTION	2
A.	Applicable Criteria	2
B.	Project Description	2
C.	Attachments	3
II.	PLANNING FINDINGS	4
A.	Oregon Statewide Planning Goals	4
B.	Oregon Administrative Rules (OAR)	5
C.	Oregon Highway Plan	70
D.	Metro Code	73
D.	Tualatin Comprehensive Plan	75
E.	Tualatin Development Code	75
III.	RECOMMENDATION	78

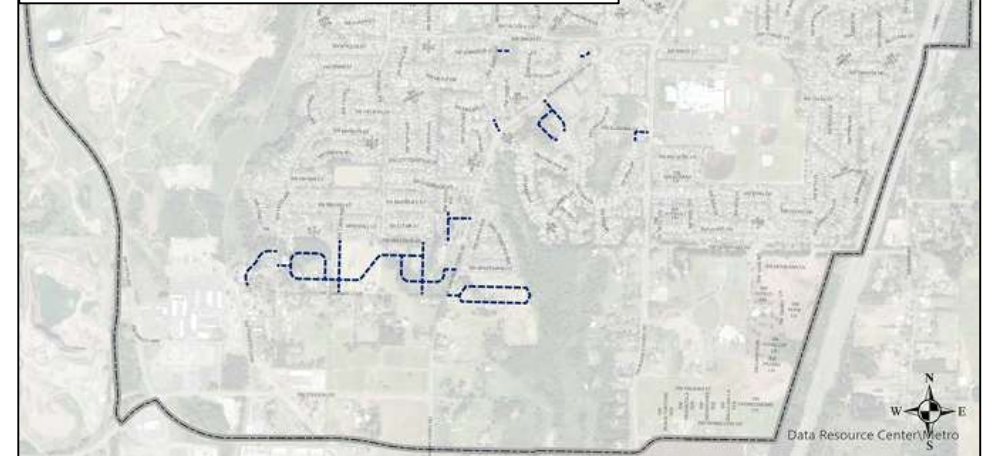
Public Comments

Comments provided the following concerns:

- Maintaining local vehicular access in the Basalt Creek area
 - *Map 8-3 (Local Street Plan) provides minimum local street connectivity and no updates proposed by the TSP amendments*
- Location of trails in the Basalt Creek area
 - *Map 8-4 (Bicycle and Pedestrian Plan) and Map 72-2 (Greenway Development Plan) identify approximate locations of trails and pathways and no updates in the Basalt Creek area are proposed by the TSP amendments*
- Policies, criteria and assessment used to evaluate the 2045 TSP
 - *As noted in the previous slide, the 2045 TSP was evaluated for conformance against all applicable state, regional, and local criteria. A draft set of findings demonstrating conformance was provided to the Planning Commission and a final set of findings will be included with the City Council adoption materials*

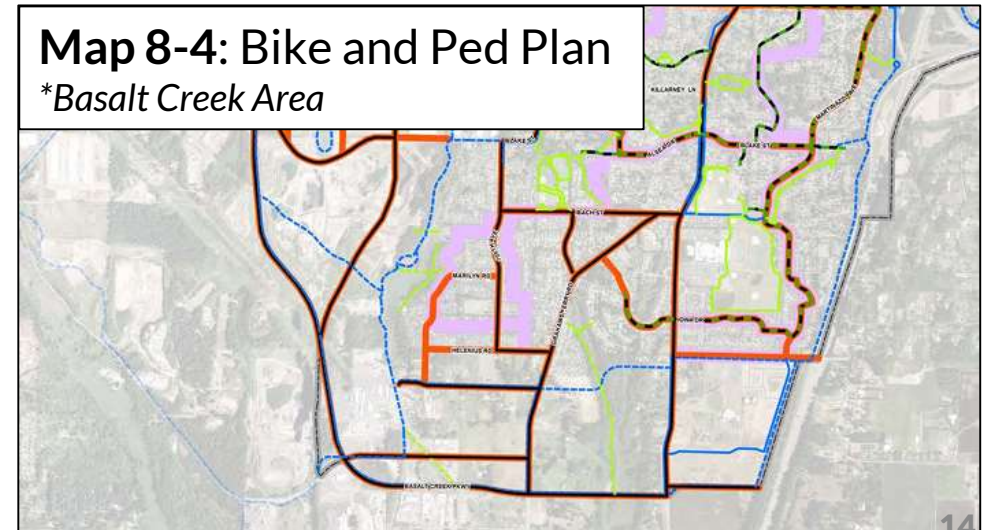
Map 8-3: Local Street Plan

**Basalt Creek Area*



Map 8-4: Bike and Ped Plan

**Basalt Creek Area*



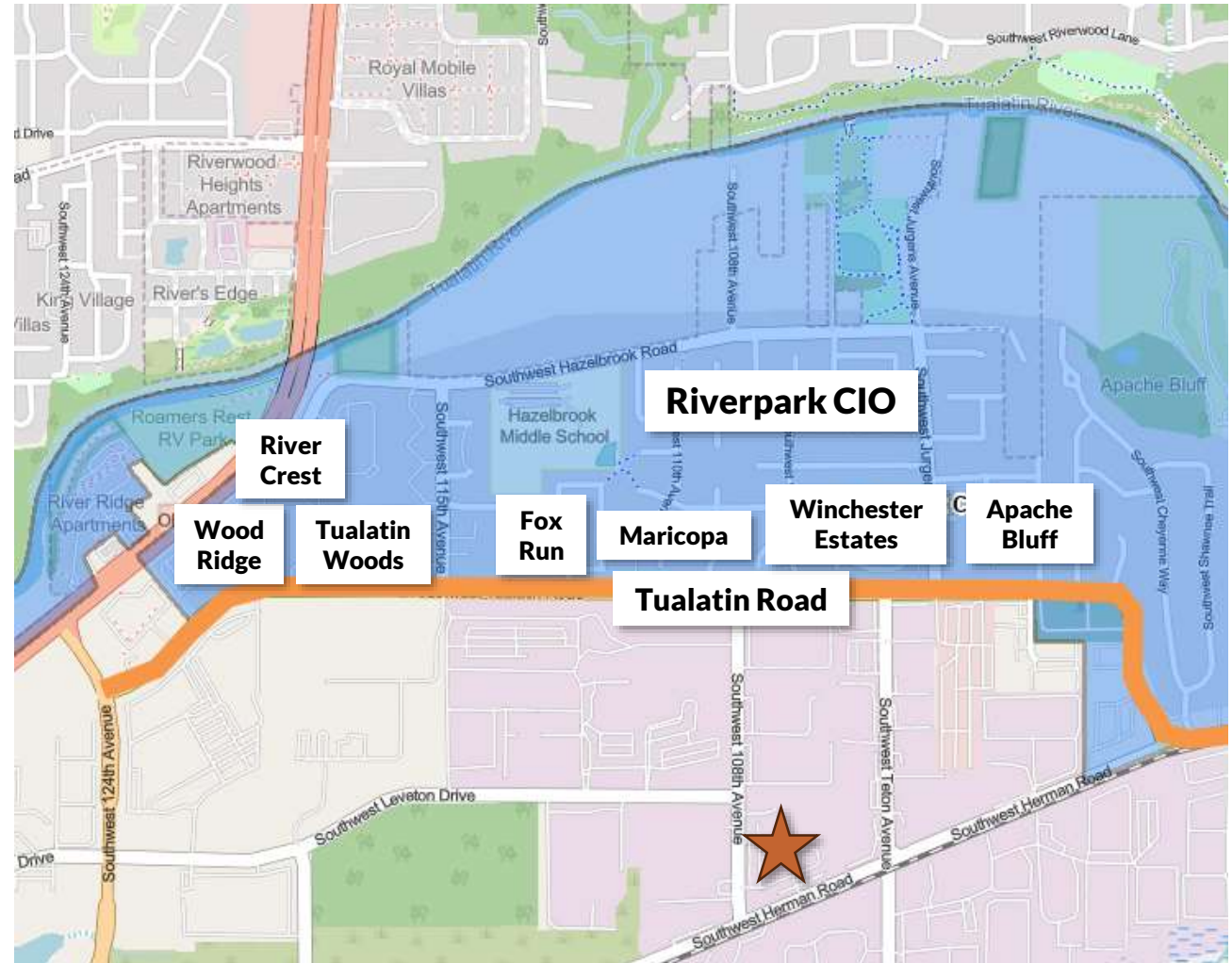
Public Comments

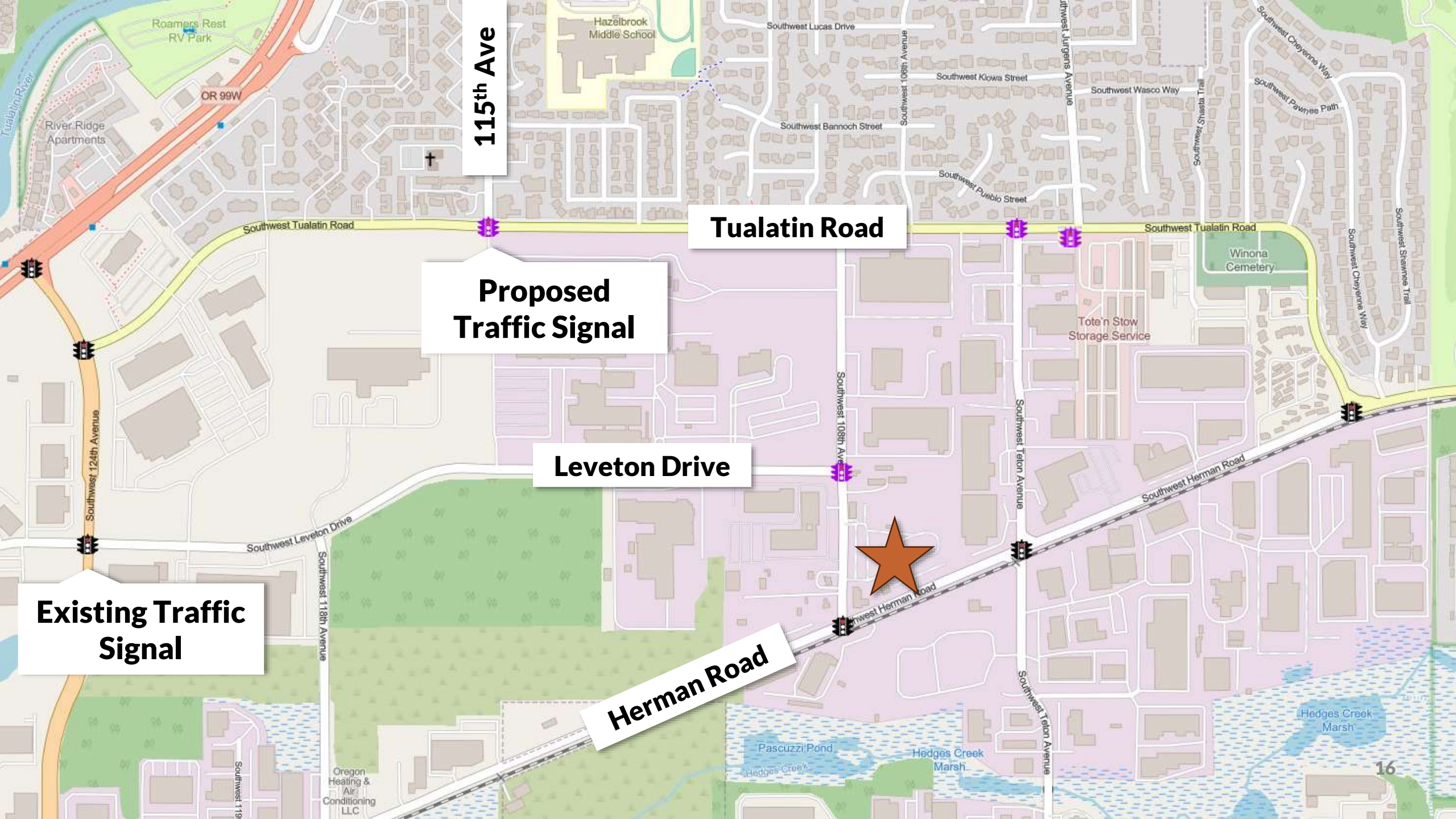
Comments asked the City to:

- Remove the planned traffic signal at Tualatin Road and 115th Avenue
- Update the functional classification of Tualatin Road from Major Collector to Arterial
- Update the functional classification of Leveton Drive from Minor Arterial to Collector

They also provided the following concerns:

- Increased cut-through traffic in the surrounding neighborhoods
- Increased traffic near Hazelbrook Middle School
- Neighborhood safety and potential pollution from vehicle traffic





115th Ave

Tualatin Road

**Proposed
Traffic Signal**

Leveton Drive

**Existing Traffic
Signal**

Herman Road

Traffic Signal Analysis



Background:

- 2014 TSP recommended signal at Tualatin Road and 115th Avenue
- 2045 TSP maintains the signal recommendation

Additional analysis found:

- Currently difficult to turn left from 115th to Tualatin *and* walk across Tualatin Rd *during peak hours*
- Forecast to be more difficult in future; especially with development
- Signal would provide protection for left-turners and pedestrians

	Intersection Delay	Intersection LOS
Existing AM	2.4	D/D
Existing PM	1.5	C/D
2045 AM No Dev	3.5	E/E
2045 PM No Dev	2	C/E
2045 AM	13.5	F/F
2045 PM	34.5	F/F

Tualatin Road



Staff Recommendation:

- Classify Tualatin as Arterial – Consistent with volume and speed of traffic, place in network, construction
- Manage as Arterial – Prioritize traffic and bike/ped movement for increased safety, reduced accesses
- Maintain Herman/Tualatin configuration; Roundabout could be considered, but may be expensive
- Add signals if needed for traffic volume or interruption of continuous traffic

Planned Potential locations:

- Jurgens Ave, Teton Ave, 115th Ave

Next Steps

August 11: Hearing to consider adoption of the 2045 TSP (PTA 25-0001 / PMA 25-0001)

The Planning Commission recommended:

- Approval of 2045 TSP amendments as proposed
- *In consideration of concerns from the Riverpark CIO regarding traffic issues at the intersection of 115th Avenue and Tualatin Road, the PC recommends public involvement of the surrounding neighborhood in future proceedings regarding any improvements contemplated for this intersection.*





CITY *of*
TUALATIN