



# Pavement Maintenance Planned Work 2025

May 27, 2025

# *Pavement Maintenance*



- **The City maintains roads in four primary ways:**
  1. Crack seal treatment (\$)
  2. Slurry seal (\$\$)
  3. Overlay (\$\$\$)
  4. Reconstruction (\$\$\$\$)
- **Each year, several roadways are chosen for focused, preventative maintenance.**
- **Maintenance is paid for by the Road Utility Fund**
  - Revenue from Tualatin street fees and Vehicle Registration Fees



# Pavement Maintenance



- Each roadway has a 0-100 Pavement Condition Index Score (“PCI Score”)
  1. Good (70-100)
  2. Fair (50-69)
  3. Poor (26-49)
  4. Very Poor (0-25)
- The PCI is a standardized method for assessing pavement condition and is used for budgeting, planning repairs, and prioritizing projects
- Projects typically include ADA curb ramp and storm drain replacement/repairs, which increase the cost of work



# Sagert St/ Martinazzi Ave.

Boones Ferry Rd to Martinazzi Ave./ Sagert St. To Avery St.

2025 Pavement Maintenance Program

TUALGIS



PCI = 55

Distance = 0.34 mi.

ADA Ramps = 6

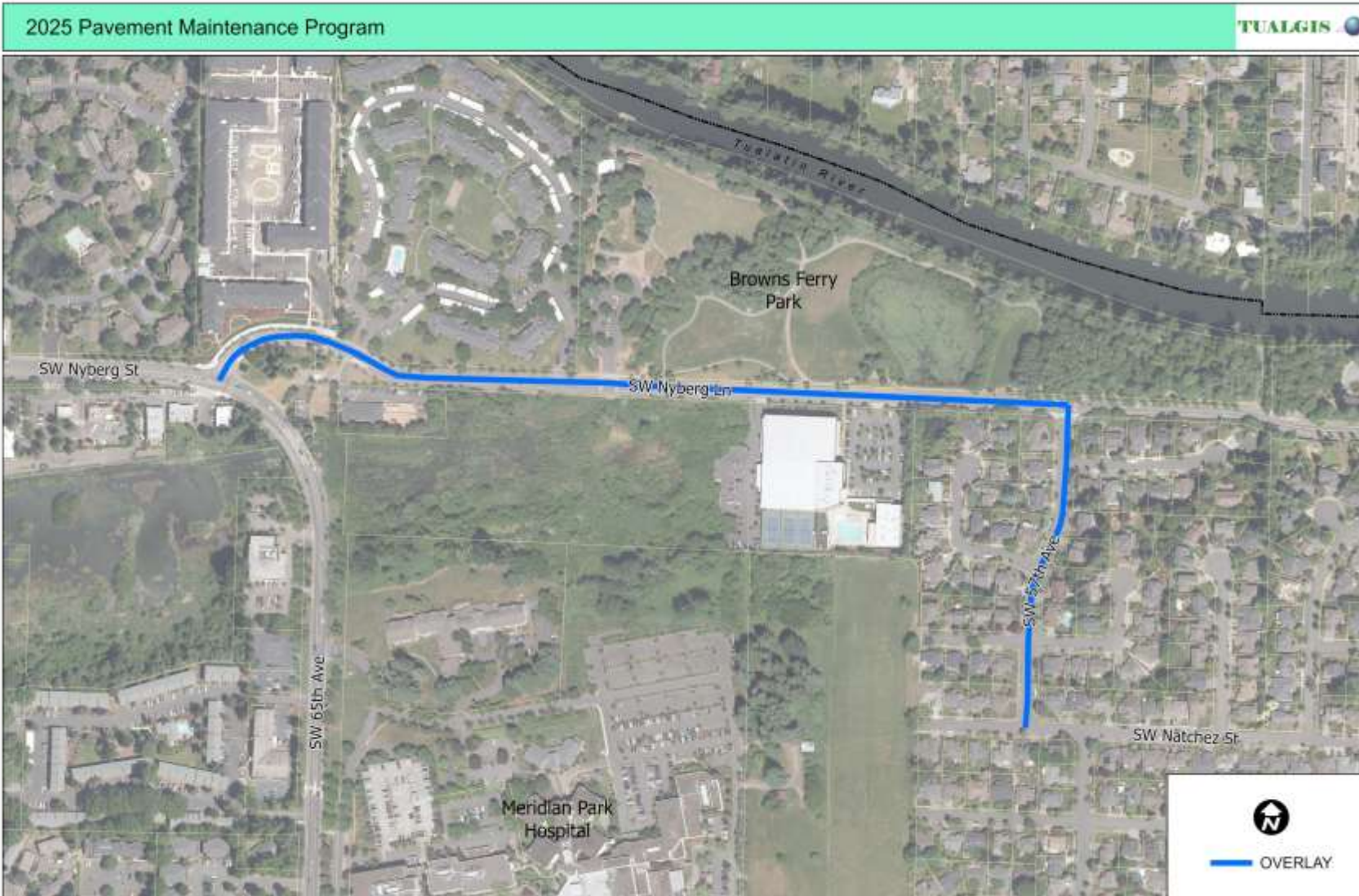


CITY of  
TUALATIN



# Nyberg Lane / 57th Ave

65th Ave to 57th Ave    Nyberg Ln to Natchez St



PCI = 65

Distance = 0.66 mi.

ADA Ramps = 14

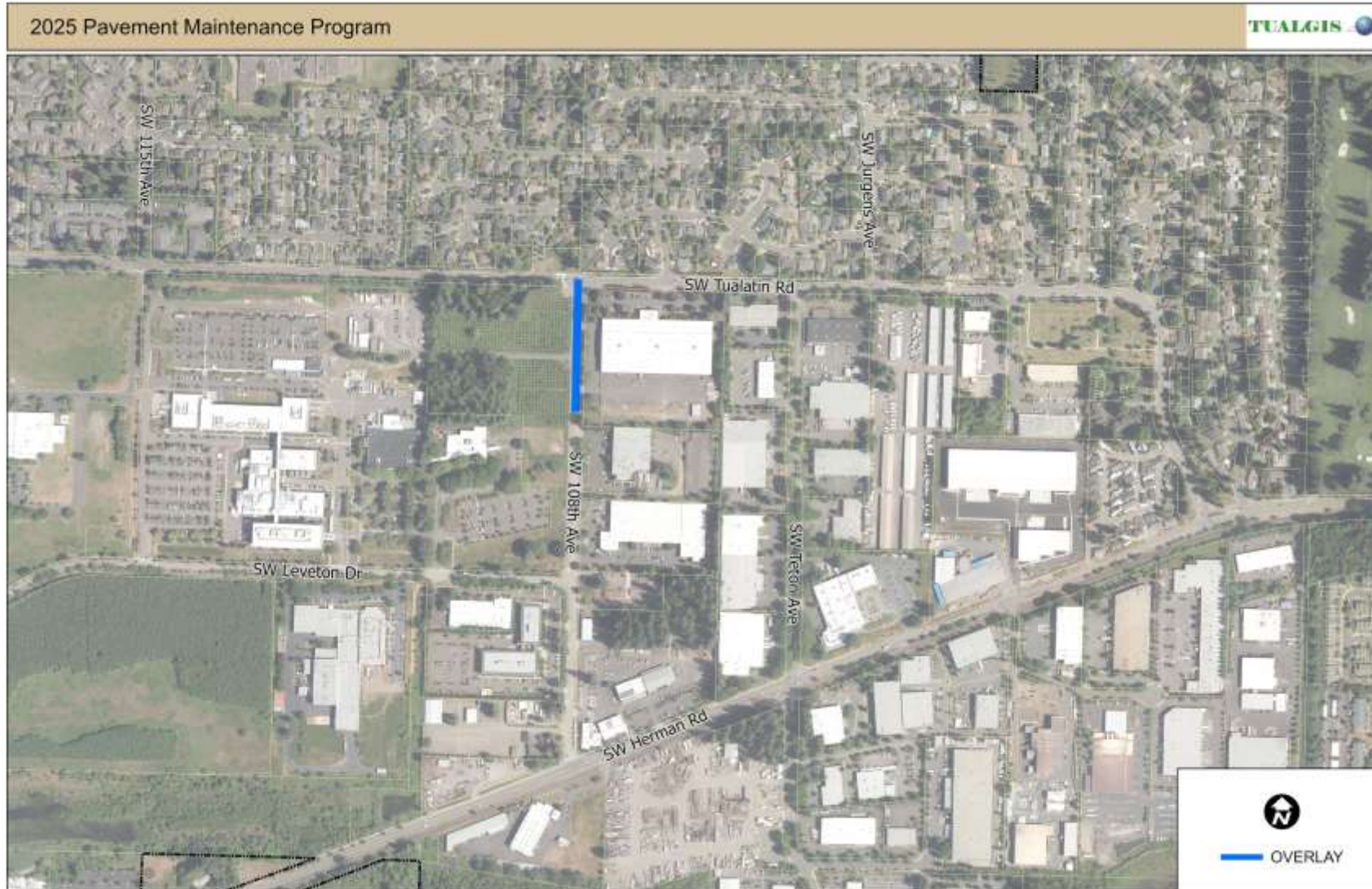


CITY of  
TUALATIN



# 108th Ave

North end to SW Tualatin Rd



PCI = 40

Distance = 0.11 mi.

ADA Ramps = 0

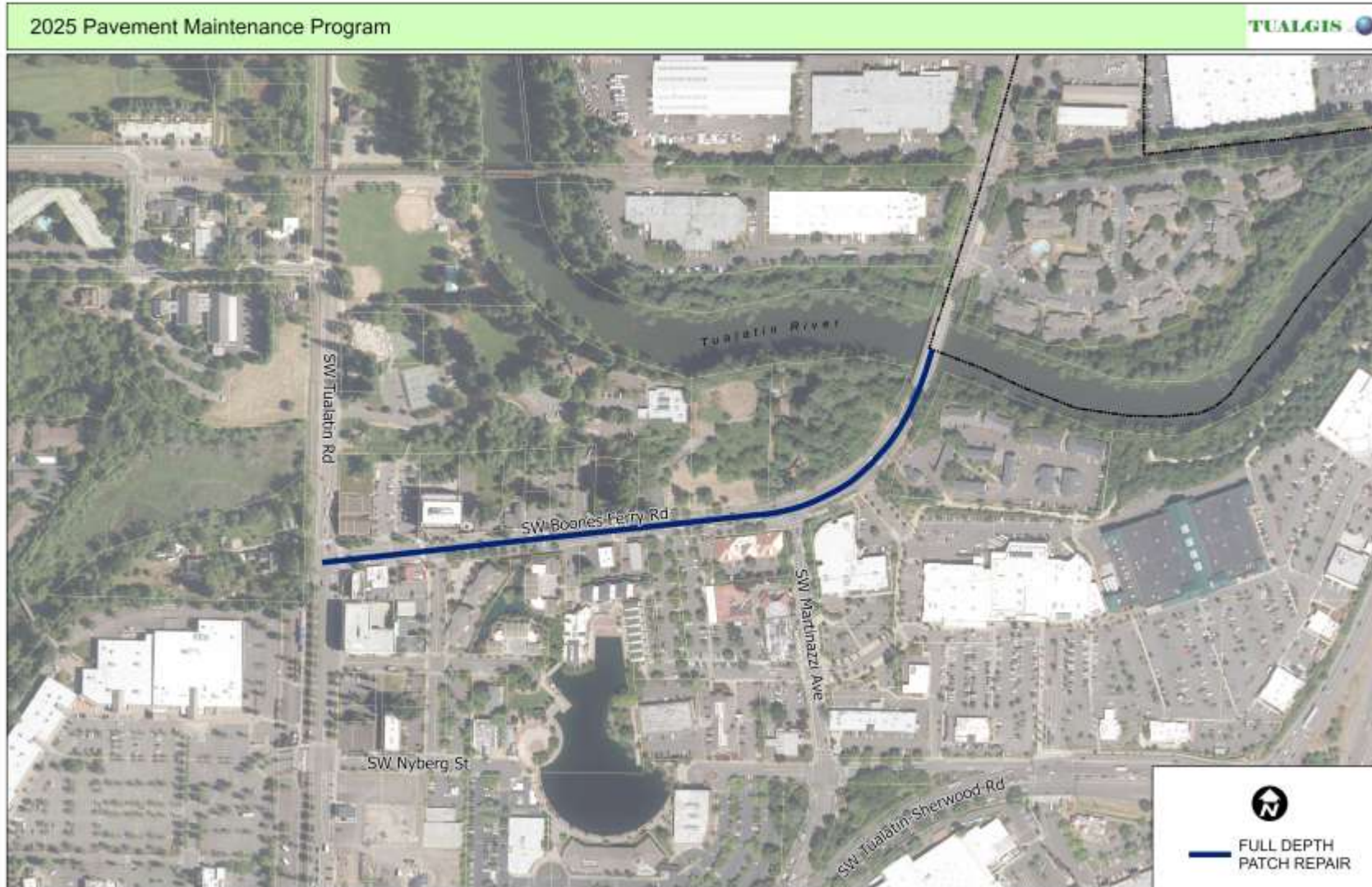


CITY of  
TUALATIN



# Boones Ferry Rd

Tualatin Rd to Tualatin River Bridge



PCI = 52

Distance = 0.38 mi.

ADA Ramps = 0



CITY of  
TUALATIN

# Recommendation



Recommend approval of Resolution 5880-25, awarding a contract for the 2025 Pavement Maintenance Program to *(insert low bidder)\** in the amount of *(inset low bid)\**.

*\*Slide will be updated May 21 with low bid and contract amount.*

