



**SECOND**

**Annual Report**

**City Council  
October 28, 2019**

- ***Tonight: review milestones reached and celebrate successes***
- ***Highlight coming attractions***
- ***Next quarterly report: Spring 2020***
- ***Monitor progress at [TualatinMovingForward.com](https://TualatinMovingForward.com)***



- 2018**
- May 15** Election Night – Measure 34-282 approved by voters
- August 8** Bond sales yield savings – program ready to go” in 90 days
- September** First project completed: 115<sup>th</sup> Ave from Tualatin Rd to Hazelbrook Rd
- October 22** First Annual Report
- 2019**
- January** Program manager on board; team in place
- January-May** Three more projects completed
- May - October** Planning began for 7 more projects
- October 5** Ribbon cutting event for Boones Ferry Rd/Siletz Dr
- October 28** Second Annual Report



# City of Tualatin

## Owner's Representative

Alta Planning + Design

## Public Engagement & Communication

Barney & Worth, Inc  
Alta Planning + Design

## Program Management & Engineering Team

Murraysmith

KPFF

Otak

Day CPM

GRI

Teragan

Vac-x

Wallis

Alta P+D

DKS

MB&G

UFS

ProPipe

Cascade Corrosion

## Program Manager Duties

- ✓ **Team leader** responsible for project delivery
- ✓ **Assessed project portfolio**, updated scopes and budgets, set project priorities and sequence
- ✓ **Manages schedules and resources** effectively and efficiently through all project phases
- ✓ **Validated budget estimates**; monitors project costs; develops and updates cash flow projections
- ✓ **Coordinates** with Washington County, ODOT, other agencies
- ✓ **Reports** on progress; finds and corrects problems



## There's a project near you... and it's finished!

- ✓ Pedestrian safety improvements at the Boones Ferry & Siletz intersection
- ✓ Project includes:
  - Pedestrian-activated signal at a high visibility crosswalk
  - ADA curb ramps
  - Sidewalk connections in all directions, plus a link to the existing trail
- ✓ Community Celebration – Saturday, October 5, 10 a.m.



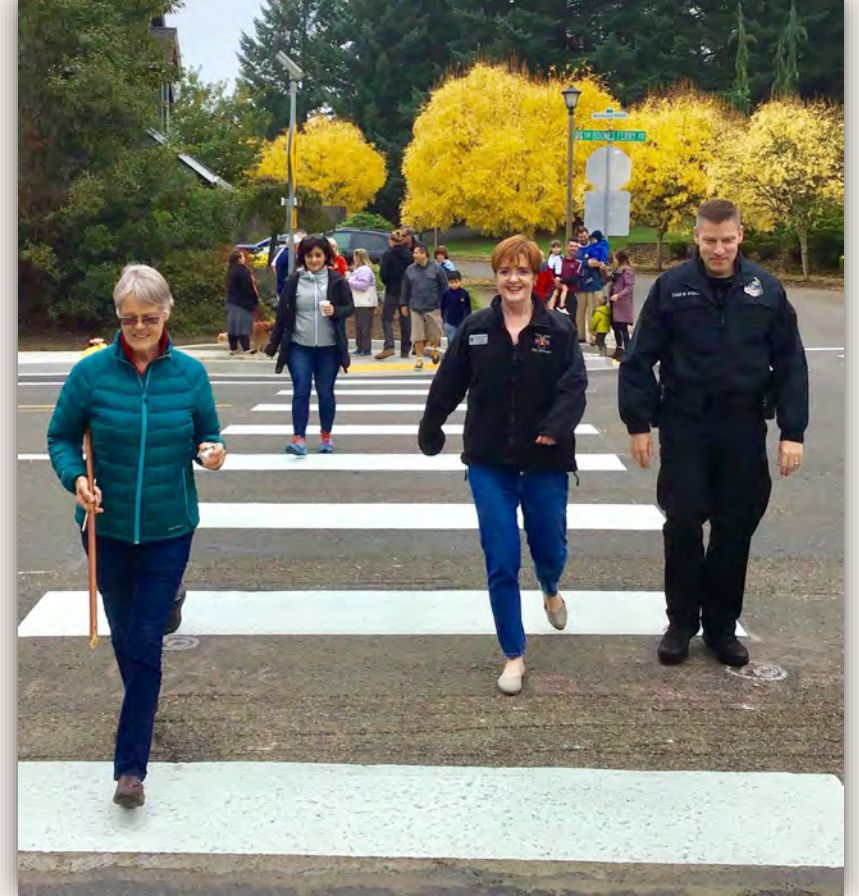
Construction is nearing completion at the new pedestrian crossing at Boones Ferry Rd and Siletz Dr in Tualatin



Learn More

### Questions?

Go to [www.tualatinmovingforward.com](http://www.tualatinmovingforward.com)  
– or –  
Email [tmf@tualatin.gov](mailto:tmf@tualatin.gov)  
– or –  
Call (503) 691-3090



Celebration – Boones Ferry & Siletz intersection – October 5, 2019

# Five Completed Projects and Seven More Underway





## Underway – Tualatin-Sherwood Rd/I-5



- ✓ Capacity improvements for Tualatin's busiest intersection
- ✓ Extends third eastbound lane from Martinazzi to Fred Meyer access
- ✓ Lane reconfiguration, striping and signage reduces travel time and saves up to \$1 million

*“Today, peak hour traffic backs up on Martinazzi from Tualatin-Sherwood Road all the way to Boones Ferry. Customers and employees can't get in or out of driveways.”*

– Linda Moholt, Tualatin Chamber of Commerce CEO



## Underway – Garden Corner Curves

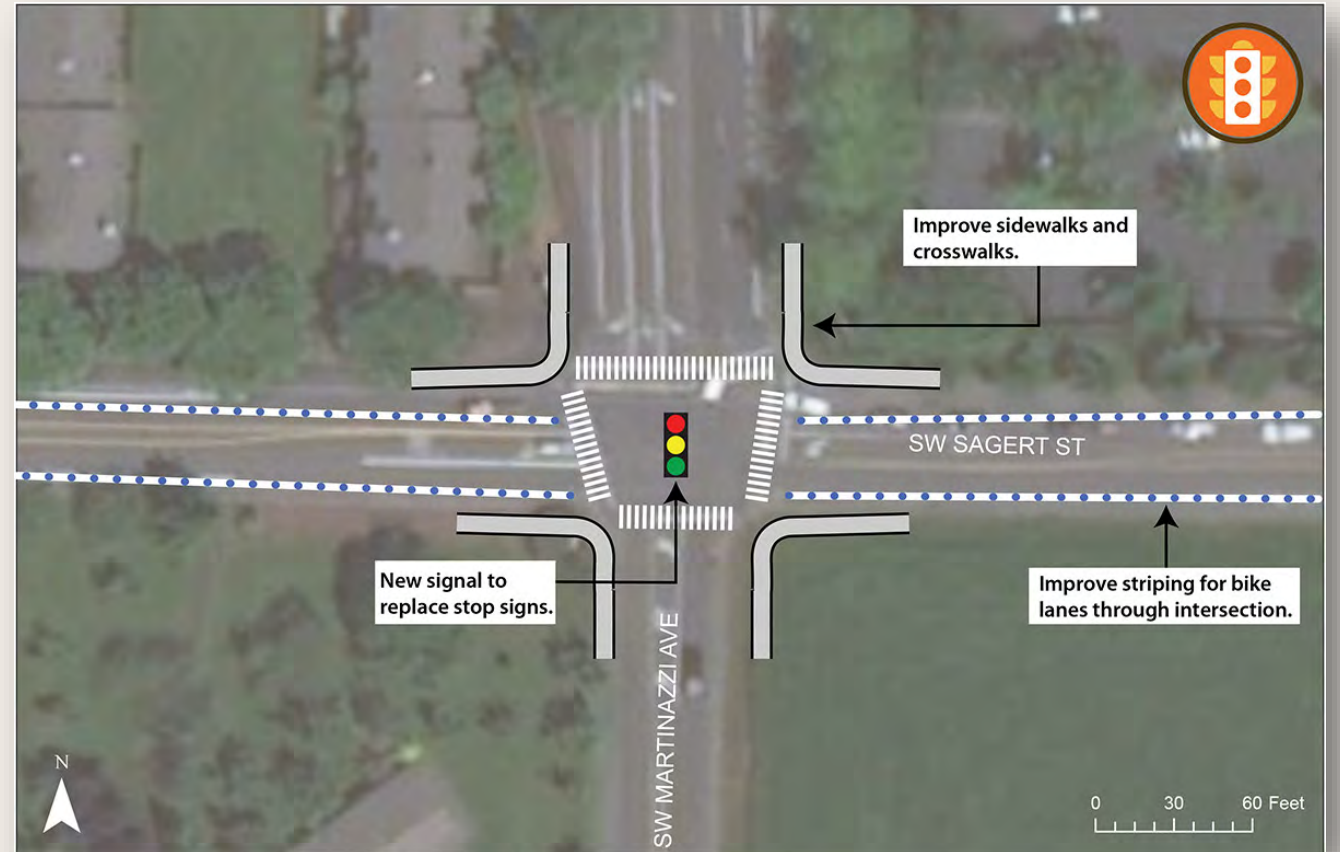


Mortoc Dr to Willow St upgrade  
SW 105<sup>th</sup>/SW Blake/SW 108<sup>th</sup> to  
roadway standards

- ✓ Site surveyed
- ✓ Engineering design underway
- ✓ Extensive community engagement
- ✓ Construction starts in 2020

## Underway – Martinazzi Ave and Sagert St

- ✓ Add a traffic signal to replace stop signs
- ✓ New sidewalks and crosswalks
- ✓ Improve bike lane striping





## “Report Card” Monitors Progress

TUALATIN MOVING FORWARD – REPORT CARD October 2019					
	PLAN	DESIGN	CONSTRUCT	BUILT!	COST
<b>CONGESTION RELIEF</b>					\$2,339,000
<b>Tualatin-Sherwood Rd: Martinazzi Ave to I-5</b> Add eastbound lane; upgrade Fred Meyer intersection	●				\$2,407,000
<b>Martinazzi Ave and Sagert St</b> New traffic signal	●	●			
<b>Tualatin Rd and Teton Ave</b> New traffic signal					
<b>Myslony St: 124<sup>th</sup> Ave to 112<sup>th</sup> Ave</b> Upgrade street and sidewalks					
<b>118<sup>th</sup> Ave and Herman Rd</b> Upgrade intersection					
<b>124<sup>th</sup> Ave and Future Blake St</b> New traffic signal for future road construction			●	●	\$15,100
<b>SAFE ACCESS TO SCHOOLS</b>					\$558,000
<b>115<sup>th</sup> Ave: Tualatin Rd to Hazelbrook Rd</b> Buffered bike lanes and crosswalk serving Hazelbrook School	●	●	●		
<b>Hwy 99W: Pony Ridge Neighborhood to 124<sup>th</sup> Ave</b> Add new sidewalks	●				
<b>95<sup>th</sup> Ave and Avery St (Tualatin Elementary School)</b> Upgrade road and sidewalk to reduce speed and improve pedestrian safety	●				
<b>NEIGHBORHOOD TRAFFIC SAFETY</b>					\$3,577,000
<b>Garden Corner Curves: Morotoc Dr to Willow St</b> Pedestrian, bike and roadway improvements to reduce speed and improve safety.	●	●	●	●	\$31,000
<b>Avery St: Boones Ferry Rd to Martinazzi Ave</b> Driver feedback signs	●	●	●	●	\$84,900
<b>Ibach St at Ibach Park</b> Midblock crosswalk with pedestrian activated flashing beacons	●	●	●	●	\$98,500
<b>Sagert St at Atfalati Park</b> Midblock crosswalk with pedestrian activated flashing beacons	●	●	●	●	\$426,000
<b>Boones Ferry Rd at Siletz Dr</b> Upgrade intersection and add pedestrian activated flashing beacons	●	●	●	●	\$310,000
<b>Boones Ferry Rd at High School</b> Midblock crosswalk with pedestrian activated flashing beacons	●	●	●	●	\$226,000
<b>Grahams Ferry Rd at Dogwood St</b> Midblock crosswalk with pedestrian activated flashing beacons	●	●	●	●	

NEIGHBORHOOD TRAFFIC SAFETY					
	PLAN	DESIGN	CONSTRUCT	BUILT!	COST
<b>Tualatin Rd: Sweek Dr to Community Park</b> Upgrade sidewalk and midblock crosswalk					
<b>Boones Ferry Rd: Norwood Rd to South City limits</b> Upgrade sidewalk and fill in missing segments					
<b>65<sup>th</sup> Ave near Meridian Park Hospital</b> Midblock crosswalk with pedestrian activated flashing beacons	●				

# Tracking Schedule Progress

		PHASES: <span style="background-color: #0070C0; color: white; padding: 2px;">PLANNING</span> <span style="background-color: #D95319; color: white; padding: 2px;">ENGINEERING DESIGN</span> <span style="background-color: #FFD700; color: black; padding: 2px;">CONSTRUCTION</span>														
Project	Estimate	2019		2020												
		Nov	Dec	Jan	Feb	Mar	Apr	May	Jun	Jul	Aug	Sep	Oct			
Tualatin-Sherwood Rd: Martinazzi Ave to I-5	\$2,339,000															
Martinazzi Ave and Sagert St	\$2,000,000															
Highway 99W: Pony Ridge Neighborhood to 124th Ave	\$558,000															
95th Ave and Avery St (Tualatin Elementary School)	\$901,000															
Garden Corner Curves: Morotoc Dr to Willow St	\$3,577,000															
Boones Ferry Rd at High School	\$550,000															
Grahams Ferry Rd at Dogwood St	\$150,000															

**\*Public engagement throughout all projects**



### Tualatin traffic bond projects move forward

Ray Pitz Tuesday, August 13, 2019

Council members get tour of planned bond projects including adding a third lane to Tualatin-Sherwood Road.



PMG PHOTO: RAY PITZ - City officials including, from front, Tualatin Police Chief Bill Steele, City Manager Sherilyn Lombos and Tualatin City Councilor Paul Morrison try out a pedestrian-activated signal on Sagert Street that connects a bus stop with Alfalati Park during a tour of traffic bond improvements Monday evening.

Members of the Tualatin City Council got a glimpse of how the city's \$20 million traffic improvement bond projects are progressing during a tour of upcoming/completed projects Monday evening.

Packing into a small tour bus at the Juanita Pohl Senior Center, councilors took a 1 ½ hour tour of various projects tied to the successful passage of the 2018 bond, which are part of what's known as the Tualatin Moving Forward program.

The first stop was the Nyberg Rivers shopping complex parking lot to view a project that will add an eastbound lane along Tualatin-Sherwood Road from Martinazzi Avenue to I-5.

Troy Bowers, executive vice president of murraysmith, an engineering firm in charge of the traffic projects, said currently it takes 6 ½ minutes to travel from Boones Ferry Road to the northbound I-5 onramp during morning commutes.

However, adding a third lane by removing a median strip and placing road striping at the Nyberg Road, Tualatin-Sherwood Road and the Fred Meyer entrance intersections will make that same commute only four minutes long.

"We found we can save 2 ½ minutes," Bowers told the council. He pointed out, however, when engineers tried to see if reconfiguring the traffic lights would make a difference found that it would save motorists only 10 seconds.

At the same time, adding that third eastbound along Tualatin-Sherwood Road will clip anywhere from six to eight minutes of travel time from Boones Ferry Road to northbound I-5 during the evening commute. Bowers pointed out that 90% of traffic jams up the two current east bound lanes.

The \$2.3 million project, which Bowers believes will come in under budget, was originally scheduled for the first quarter of 2021, but may get started as early as 2020.

Other locations visited during Monday's tour included:

- 65th Avenue: near Meridian Park Hospital. Plans are to add a mid-block pedestrian activated rapid-flashing beacon crossing. The signal will be installed at the TriMet bus stop.

### Got a traffic safety project costing under \$100,000? Tualatin is all ears

Ray Pitz Monday, June 17, 2019

Residents can submit projects online (the city has set aside a little more than \$2 million) until June 30

**Tualatin** MOVING FORWARD **Annual Call for Projects** NEW

The City of Tualatin is seeking residents' suggestions for the Citywide Neighborhood Traffic Safety Program. If you have an idea for a project, please fill out the "Suggest a Project" form at [www.tualatinmovingforward.com](http://www.tualatinmovingforward.com).

Ask the public to submit projects by June 30<sup>th</sup> every year

Projects should address safety issues

Cost should be around \$100K or less

Types of projects : speed feedback signs, protected midblock crosswalks, curb extensions, buffered bikes lanes, etc.



COURTESY CITY OF TUALATIN - If you have a traffic safety project in Tualatin, the city will take a look at your suggestion. Visit [tualatinmovingforward.com/suggest-a-project](http://tualatinmovingforward.com/suggest-a-project).

Have an idea for a street you would like see improved or a traffic safety issue you'd like addressed?

The City of Tualatin is looking for your suggestions as part of its citywide Neighborhood Traffic Safety Program.





City Council Tour – August 12, 2019



### Boones Ferry Rd: at Tualatin High School

#### Project Description:

The purpose of this project is to improve safe access to Tualatin High School for students walking and biking to school. It will consist of installing two new midblock crossings with pedestrian-activated signals near the north and south entrances to the school, and constructing sidewalk where gaps exist along Boones Ferry Rd in the vicinity of the crossings.



#### This project addresses

*Safe Access to Schools*

- ✓ Establishes safe crossing
- ✓ Creates connection to surrounding neighborhoods

#### Project Schedule

	2019					2020										
	July	Aug	Sep	Oct	Nov	Dec	Jan	Feb	Mar	Apr	May	June	July	Aug	Sep	Oct
Existing Conditions																
Public Engagement																
Design & Permitting																
Construction																



Hwy 99W: Pony Ridge  
Neighborhood to  
124th Ave.



**Coming Soon!**

- ✓ The design phase for this project is beginning now
- ✓ This project will improve pedestrian safety and accessibility for residents in the Pony Ridge neighborhood by filling in missing sidewalks along Highway 99W/Pacific Hwy to connect pedestrians to signalized crossings and transit
- ✓ This project is supported by voter-approved funds

#### Learn More

For more information visit [www.tualatinmovingforward.com/hwy-99w-near-pony-ridge/](http://www.tualatinmovingforward.com/hwy-99w-near-pony-ridge/) or call (503) 691-3090. For questions or to receive quarterly project updates email [tmf@tualatin.gov](mailto:tmf@tualatin.gov)

# DISCUSSION





## NEIGHBORHOOD TRAFFIC SAFETY PROGRAM




Bond-funded program for addressing safety at locations identified by the community



Projects can be implemented quickly, but spread out over the life of the program



Address areas throughout the City

[Suggest a Project / Sugerir un Proyecto](#) 



## PROJECT PRIORITIZATION CRITERIA:



### GEOGRAPHIC DIVERSITY

The Citywide Neighborhood Traffic Safety Program should fund projects spread throughout the entire community



### SOLUTION-ORIENTED

Is there a safety problem, and will the proposed project solve this problem?



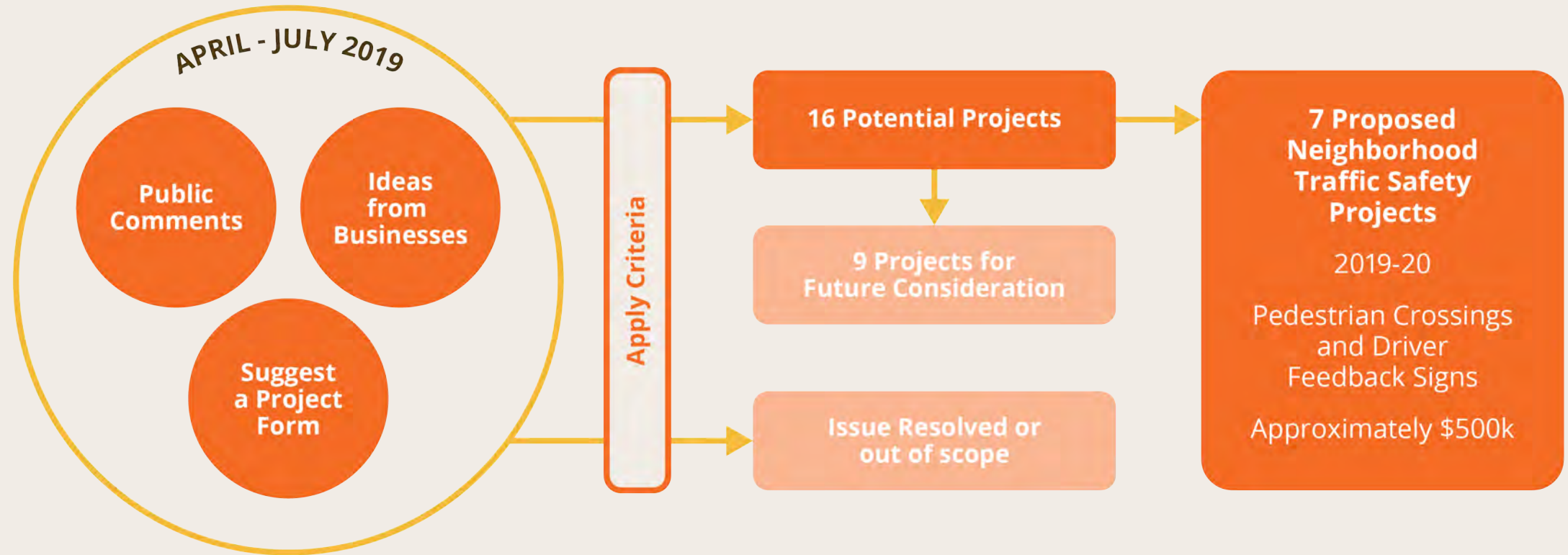
### BUDGET-APPROVED

Is the potential solution within the budget allowance for this program?





# PROJECT IDENTIFICATION PROCESS

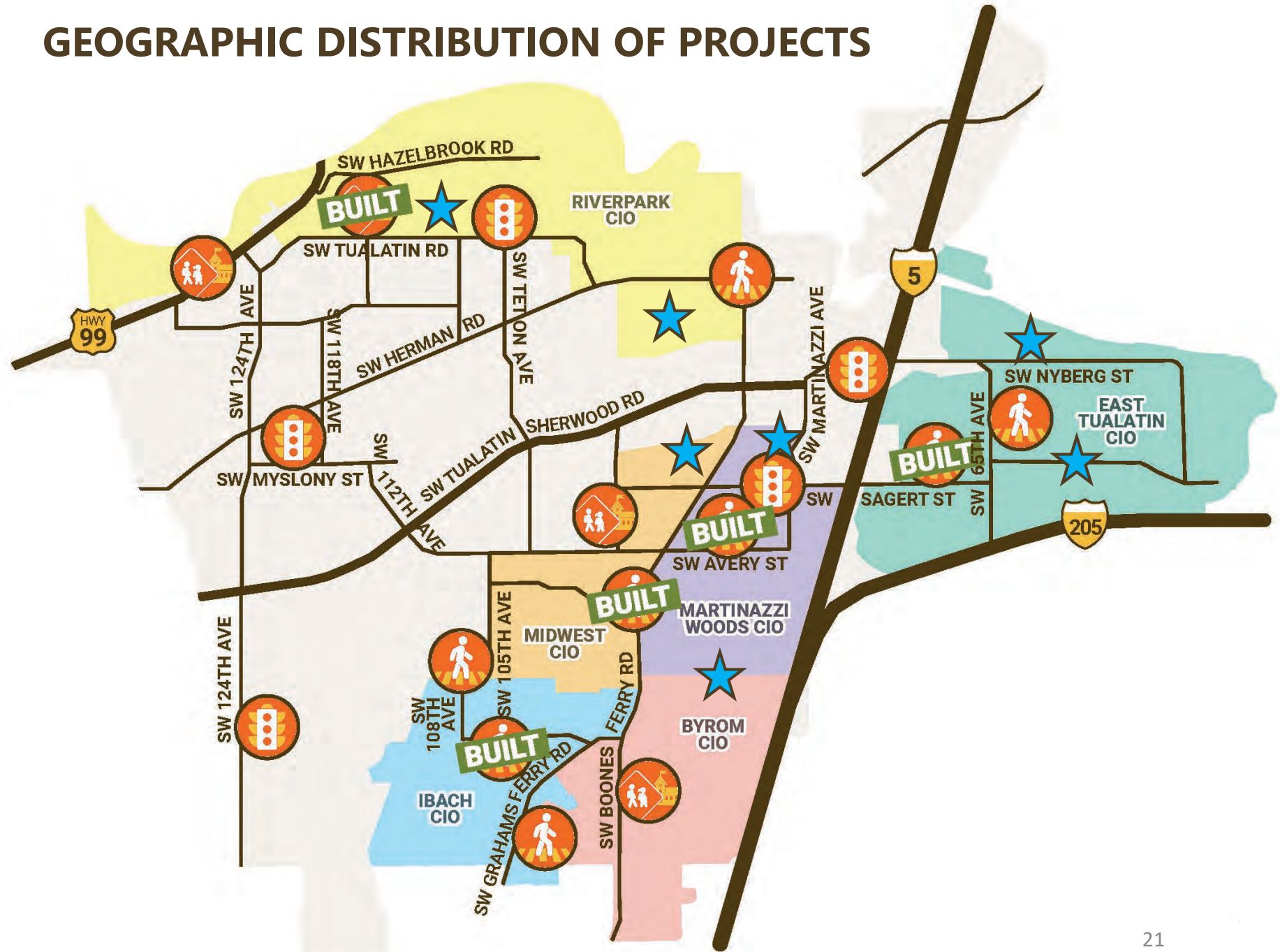


**CURRENT  
PRIORITY PROJECTS**



**PROPOSED  
NEIGHBORHOOD  
TRAFFIC SAFETY  
PROGRAM  
PROJECTS  
2019-20**

**GEOGRAPHIC DISTRIBUTION OF PROJECTS**





## PROPOSED NEIGHBORHOOD TRAFFIC SAFETY PROGRAM Project List 2019 - 2020

PROJECT LOCATION	PROJECT TYPE	ESTIMATED COST
Mohawk Street (East of Martinazzi at PGE)	New Pedestrian Activated Signal	\$40,000
90th and Sweek Drive	New Pedestrian Activated Signal	\$80,000
Borland Road	New Crossing	\$80,000
Nyberg Lane at entrance to Browns Ferry Park	New Pedestrian Activated Signal and Signage	\$90,000
Martinazzi Avenue between Avery & Dakota	Driver Feedback Sign(s)	\$30,000
Tualatin Road between 105th and 115th Avenues	New Pedestrian Activated Signal and Driver Feedback Sign(s)	\$100,000
Nasoma Lane near Marquis	New Crossing	\$80,000

**TOTAL: \$500,000**

# Want to suggest a project? It's not too late



## Want to suggest a project in your area?

*In May 2018, Tualatin voters approved a \$20 million General Obligation bond measure to pay for local projects that relieve congestion and improve neighborhood traffic safety.*

*The City of Tualatin is seeking residents' suggestions for needed traffic safety projects citywide. Do you have a project in mind? Let us know! **Tell us about the route/location/situation you want to suggest***

Street name and cross street, or closest intersection:

- Speeding issues: \_\_\_\_\_
- Neighborhood pedestrian safety issues: \_\_\_\_\_

**Tell us about this route/location (check all that apply)**

- People use this route to get to school  ...Or to a park
- People use this route to get to other public services (medical, commercial, public transit).
- People are driving in excess of the posted speed  ...Or do not yield to people crossing the street
- Location has crashes involving pedestrians, bicyclists and/or motor vehicles (you may provide further details in the comments section)
- There is a signalized intersection that seems unsafe for people walking
- Lack of crosswalks  Distance to nearest safe crosswalk is too great
- Lack of safe sidewalks  Lack of bike lanes

—MORE—



# DISCUSSION



NEXT STEPS 





HOME

PRIORITY PROJECTS

CONTACT

In May 2018, Tualatin voters approved a \$20 million G.O. bond measure to support high priority transportation projects, distributed citywide. The bond measure enables the City to move quickly to finance and build the priority projects within just a few years.

**Project priorities are guided by community input demonstrating broad support for Tualatin's three most pressing transportation issues:**



### Congestion Relief

New signals and added travel lanes and turning lanes on Tualatin-Sherwood Road and other streets



### Neighborhood Safety

New pedestrian crossings with signals and driver feedback signs that display speed



### Safe Access to Schools

New crosswalks, speed controls and sidewalks to and from schools

## OTHER NEIGHBORHOOD PROJECTS FOR CONSIDERATION IN 2020

PROJECT LOCATION	PROJECT TYPE
SW Boones Ferry Road between Tualatin Road and Martinazzzi Avenue	RRFB at 1 of the 3 crossings on Boones Ferry Road
Martinazzzi Avenue and Mohawk	Improve pedestrian safety for bus stop access: wait and see how Martinazzi/ Sagert project improvements work.
Grahams Ferry at Helenius Street	Traffic calming/Intersection improvements
Marilyn St/112th Avenue and 11th Avenue	Traffic calming
108th from Nierman to Helenius	Driver feedback sign, restriping: monitor post Garden Corner Curves construction
Boones Ferry between Killarney Lane and Iowa Drive	Improve ped crossing and install traffic calming (Byrom Elementary School). Wait and see if new crossing provides improved conditions
Alsea Drive between Boones Ferry Road and 100th Drive	Traffic calming and improve ped crossing. Order speed data, review next year
Siletz between Teton and Boones Ferry	Driver feedback signs. Order speed data, review next year
90th Avenue and Tualatin Sherwood Road (Kaiser)	Improve ped crossing, RRFB Engineer assessment of curb ramps