

Tualatin's Draft Community Climate Action Plan

Tualatin Planning Commission meeting
October 18, 2023

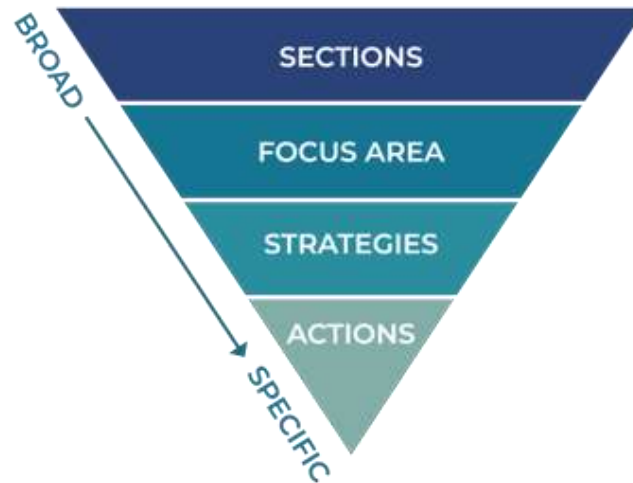


Overview

- What is the CAP and what will it do?
- Tualatin's future climate & emissions inventory
- Sections & focus areas
- Sample strategies & actions
- Next steps
- Q&A

What is the CAP and what will it do?

- Long term plan
- Includes actions that the community and City can take to:
 - Help people adapt to changing climate conditions (adaptation)
 - Reduce carbon emissions (mitigation)



How Tualatin's climate will change

More wildfires and smoke in the region



More days over 90 degrees F

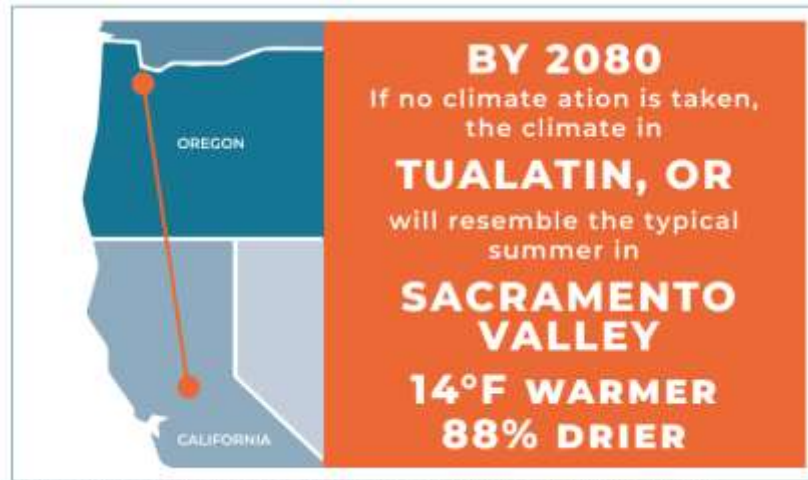
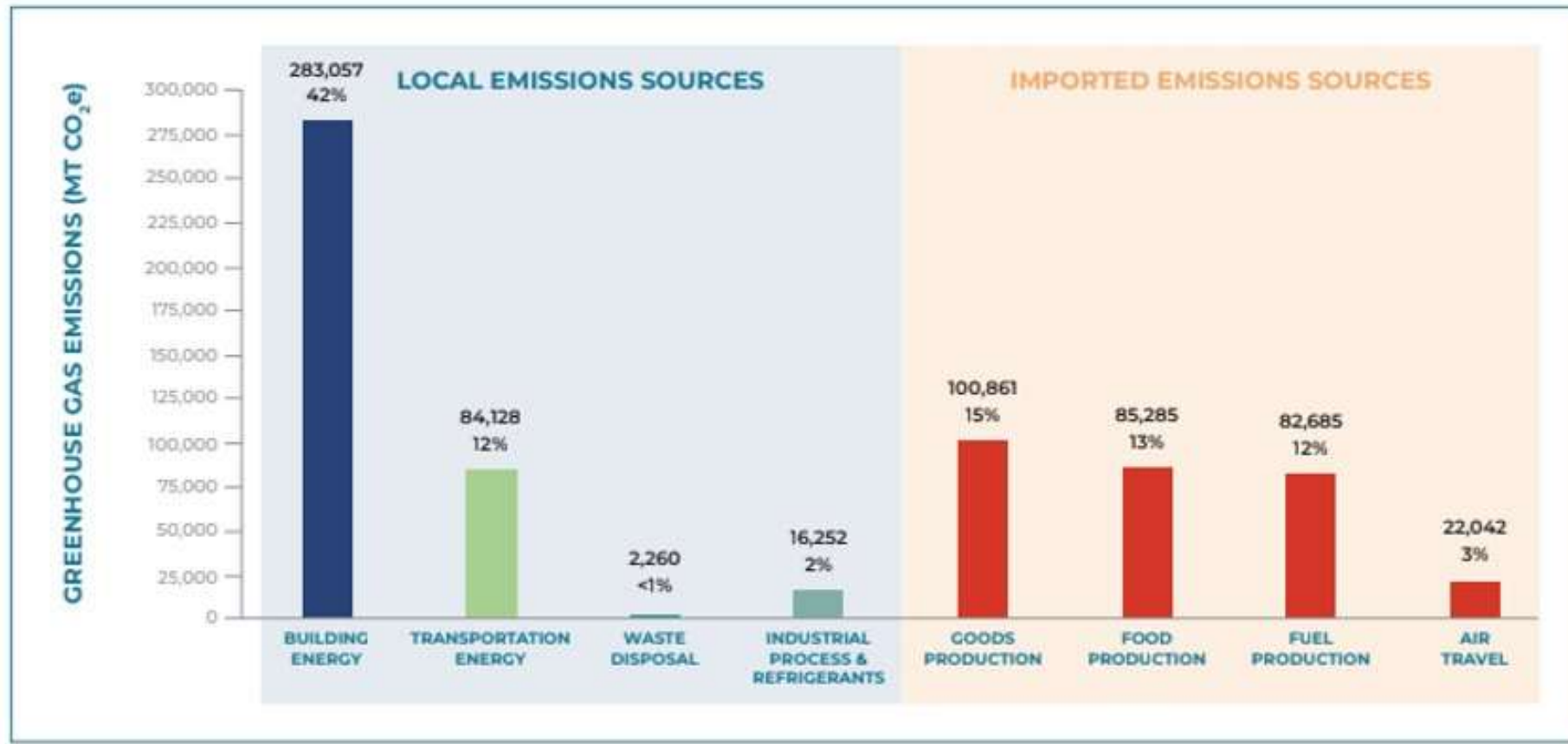


FIGURE 5: Without climate action, Tualatin's climate will feel like Sacramento Valley California's current climate.

More frequent & intense flooding



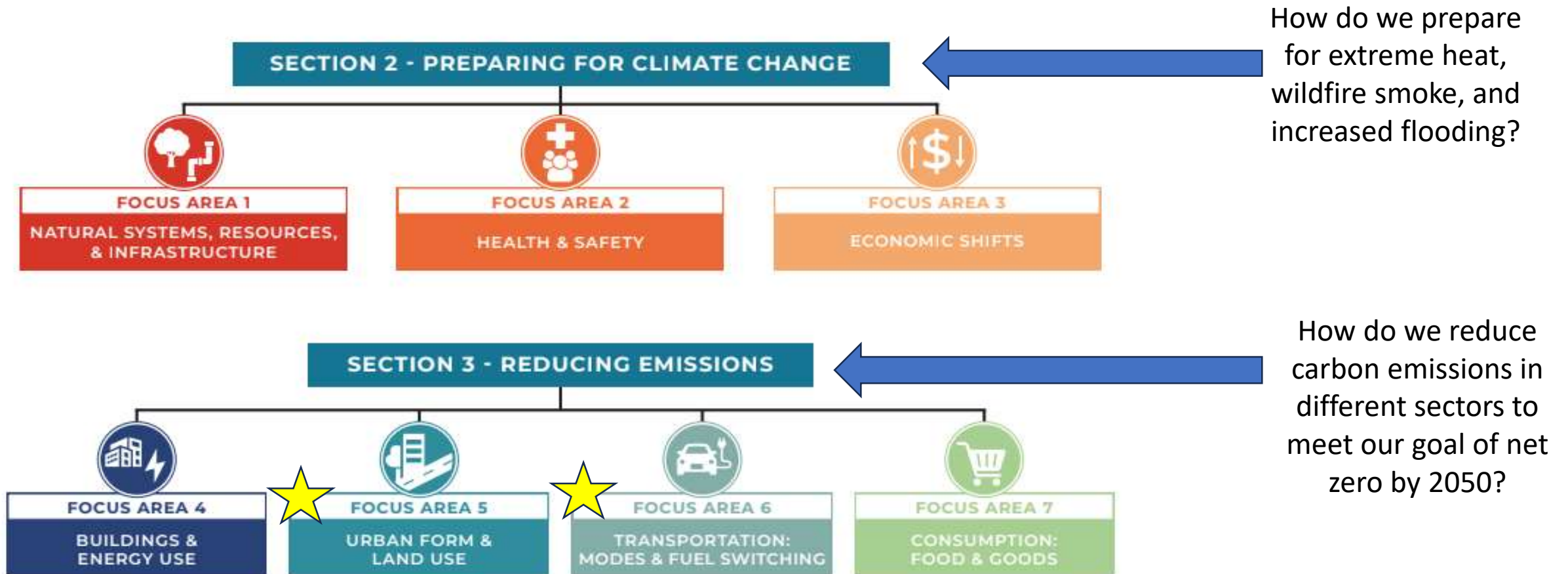
Tualatin's emissions inventory



Local emissions + imported emissions = total emissions

Total emissions = 676,000 MT CO₂e

Sections & focus areas



Sample strategies & actions

FOCUS AREA 5: URBAN FORM AND LAND USE



Strategy 5.1

Dense future development resulting in reduced future vehicle miles traveled



Mixed use development



Pedestrian, cyclist, and transit-friendly neighborhoods

Sample strategies & actions

FOCUS AREA 5: URBAN FORM AND LAND USE



Strategy 5.2

Urban/community forestry & carbon sequestration



Increase tree canopy



Increase planter width

Sample strategies & actions

FOCUS AREA 6: TRANSPORTATION – MODES & FUEL SWITCHING



Strategy 6.1

Fuel switching - Electric vehicles (EVs), renewable diesel, biodiesel, ethanol, and other low-emissions fuels



Establish EV parking & infrastructure requirements at new developments

Sample strategies & actions

FOCUS AREA 6: TRANSPORTATION – MODES & FUEL SWITCHING



Strategy 6.2

Active transportation to reduce car miles and fossil fuel (gasoline) use



Prioritize & increase active transportation options and infrastructure



Develop a Complete Streets policy

Next steps



Scan to complete the
online open house!

- Online open house
- Review *adaptation* actions with the City Council (11/13)
- Review *mitigation* actions with the City Council (11/27)
- Finalize plan based on feedback
- Council adoption of final plan
- Implementation begins

Questions?

