

2030 Vision Midterm Check-In

City Council | March 14, 2022





CITY OF TUALATIN 2021 PRIORITIES

- HOUSING**
- Affordable
 - Supportive Services
 - Diversity
 - Smart Design/Green Construction

- TRANSPORTATION**
- Tualatin Moving Forward
 - Shuttle Program
 - I-205 Tolling
 - Regional Initiatives

- DIVERSITY, EQUITY, INCLUSION, & SOCIAL JUSTICE**
- Community Engagement
 - Zoning Inequities
 - DEI Training
 - Accessible Communications
 - Environmental Justice

- ENVIRONMENT**
- Climate Action Plan
 - Bee City USA & Tree City USA

- COMMUNITY ASSETS**
- Parks
 - Water Supply
 - City Facilities
 - Community Art

- ECONOMIC DEVELOPMENT**
- Urban Renewal
 - Comprehensive Plan/Development Code
 - Business Support

- CRISIS PREPAREDNESS**
- Crisis Management/Resiliency Plan
 - CERT



An inclusive community that promotes equity, diversity, and access in creating a meaningful quality of life for everyone

Completed

- Acknowledgement of Native Land and People Work Group
 - Delivered 94 Yard Signs to veterans
 - Over 2,100 Juanita Pohl Center participants
 - Over 400 participants in science-based learning through library outreach visits
-

Ongoing

- Organizational diversity, equity, and inclusion work
 - Pavement maintenance equity framework
 - Parks and Recreation Equity and Inclusion Plan
 - Bibliotequitas grant
 - Engagement with youth through volunteer programming
-

Upcoming

- Equity Committee Planning Group
- Restroom renovations and ADA improvements at Tualatin Commons and Community Park
- Spanish-language class for staff





A connected, informed, and civically engaged community that embraces our City's diversity



Completed

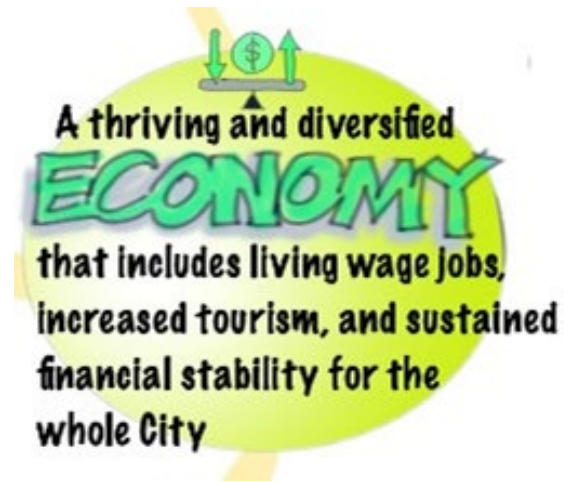
- CIO Program 10-Year Review
- Tualatin Moving Forward Annual Report
- 770 volunteers served 10,660 hours
- Enhanced emergency communication during February Snow and Ice Storm

Ongoing

- Affinity groups
- Student library cards
- Tualatin CERT, Neighborhood Ready, and CIO Program
- Tualatin Today & other e-newsletters
- Project-specific public engagement plans

Upcoming

- 2023 Tualatin Community Survey
- Washington County Emergency Drills
- Test radio equipment used during emergencies



A thriving and diversified economy that includes living wage jobs, increased tourism, and sustained financial stability for the whole City

Completed

- Southwest and Basalt Creek Development Area
 - Hispanic/Latino-owned business visits
 - Ice Age Floods Foundation Tourism Video
-

Ongoing

- American Rescue Plan Act (ARPA) Funds
 - Support Tualatin Chamber of Commerce
 - Corporate volunteer opportunities
 - Core Area Parking District
 - Business support through development services
-

Upcoming

- Prosperity planning – Core Opportunity and Reinvestment Area
- Basalt Creek Area Manufacturing Park Zoning Code Updates
- Sponsor Westside Pitch Competition





Safe, vibrant, and accessible gathering places throughout the City that build and celebrate our whole community

Completed

- Tualatin City Services building
- Remodeled City Offices building
- Replaced Juanita Pohl Center roof
- Library Makerspace
- Holiday Light Parades
- Summer Concerts
- Summer Lunch Program at the Library

Ongoing

- Basalt Creek Parks and Recreation Plan
- Traffic signal box wrap program
- Veterans Plaza
- Remodeled Lafky House
- Creative and safe programming like Viva Tualatin, DIY Volunteering, Share the Love, etc.

Upcoming

- Replace Police Department roof
- Stoneridge Park construction documents
- Parks Utility Fee projects
- Browns Ferry Boardwalk replacement
- In-person programming
- Blender Dash





An efficient, accessible, innovative, sustainable, and connected transportation system that effectively and safely meets the needs of our entire community



Completed

- Garden Corner Curves
 - 2021 Neighborhood Traffic Safety Program Projects
 - Borland Rd pavement improvements
-

Ongoing

- 95th and Avery
 - Tualatin Rd: Sweek to Community Park
 - Martinazzi Ave and Sagert St
 - Boones Ferry Corridor Sidewalk and Bike Lane Project
 - Hazelbrook Area Project
 - 65th Near Meridian Park Hospital
 - Herman Rd Improvements
 - Monitor regional transportation initiatives
 - Annual pavement maintenance program
 - Annual sidewalk/street tree program
 - Tualatin River Greenway trail extensions
-



Upcoming

- 2022 – 2023 Neighborhood Traffic Safety Program Projects



**Safe, desirable, welcoming, and sustainable
neighborhoods with housing that is available to all**

Completed

- Approved 400 unit subdivision in Basalt Creek
 - Equitable Housing Solutions Event
 - Middle housing code updates
 - Police Mental Health Response Team
-

Ongoing

- Emergency rent and energy assistance program
 - B-level water transmission line upsize project
 - Housing resources webpage for immediate housing concerns
 - Housing reporting to DLCD and PSU/PRC
 - School Resource Officer Program
 - Countywide utility billing assistance program
 - Community Partners for Affordable Housing development
 - LED street light conversion program
 - Police body-worn cameras
-

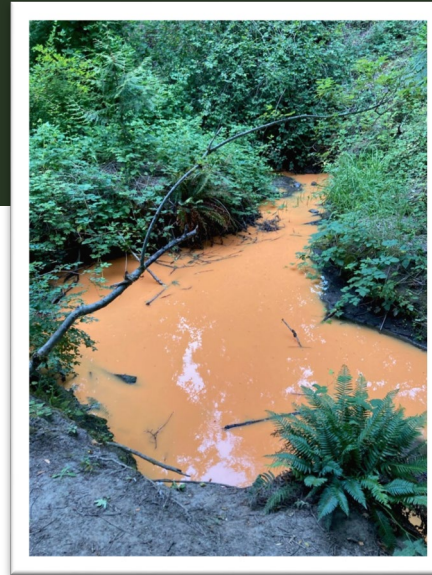
Upcoming

- Implement housing production strategy
- 2022 severely rent burdened event





An environmentally active, sustainable, responsible, and forward-thinking community that values and protects our natural resources, inhabitants, and habitat



Completed

- Updated City's emergency plan
- Water system risk and resiliency assessment and emergency response plan developed
- Responded to environmental hazards (Fanno Creek, Hedges Creek)

Ongoing

- Climate Action Plan
- Water Master Plan
- Bee City
- Tree City
- Environmental volunteering opportunities
- Regional solid waste initiatives
- Partners for a Sustainable Washington County Community
- Basalt Creek Stormwater Plan

Upcoming

- Implement lead/copper rules
- Resiliency measures to protect water infrastructure
- Solar panels at Tualatin City Services building