

# Ch. 80 – Cannabis Facilities Amendments

Tualatin Planning Commission  
October 15, 2020



# OUR DISCUSSION TODAY

*The Commission is being asked to make a recommendation to Council on amendments to Ch. 80- Cannabis Facilities.*

- Background
- Proposed text amendments
- Planning Commission recommendation



CITY OF

**TUALATIN** OREGON

# BACKGROUND

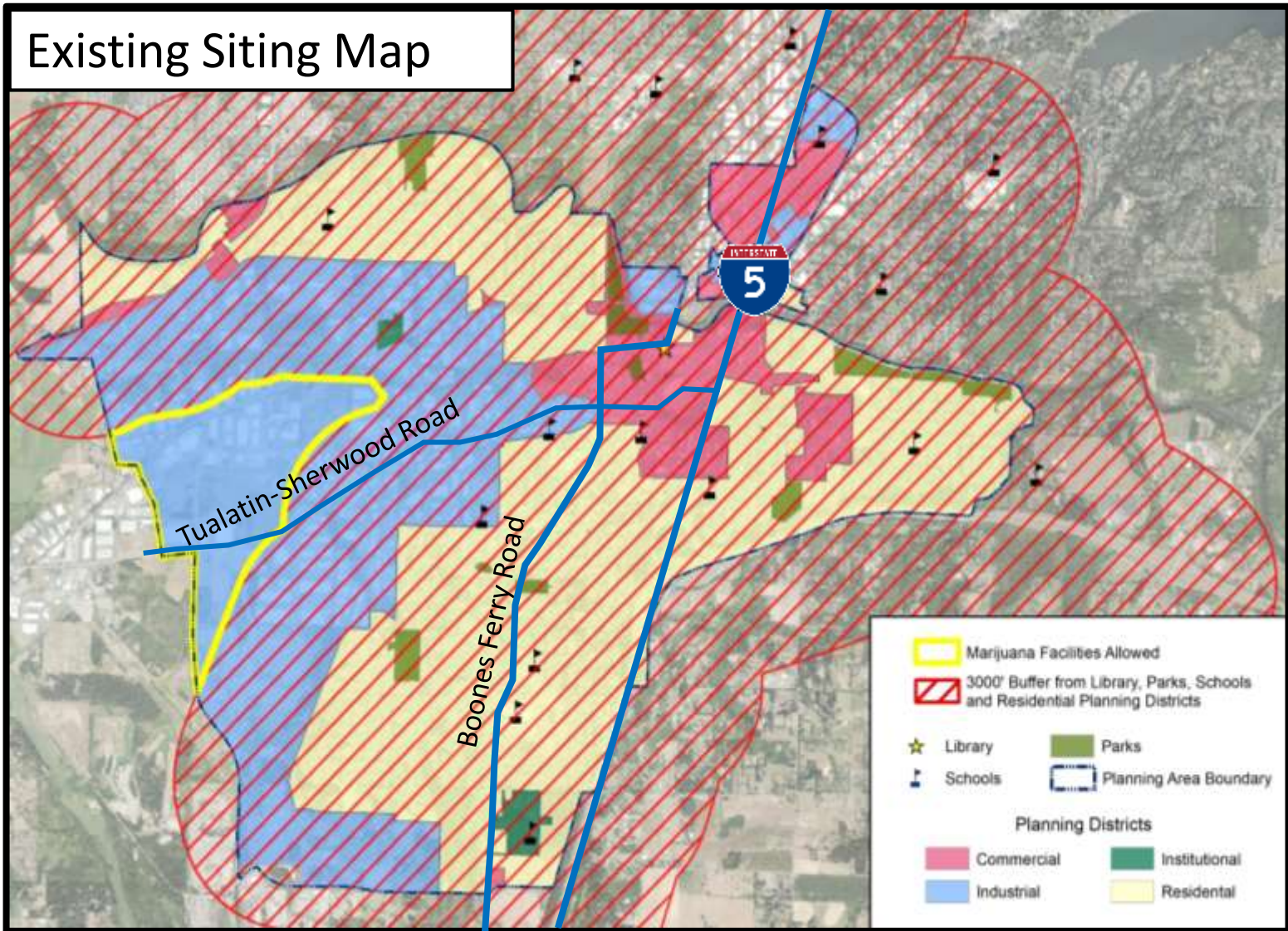
State law allows cities to put regulations on cannabis businesses.

In 2015, Tualatin adopted regulations that:

- Limited cannabis facilities to industrial zoning districts
- Imposed buffer restrictions to other uses



# Existing Siting Map



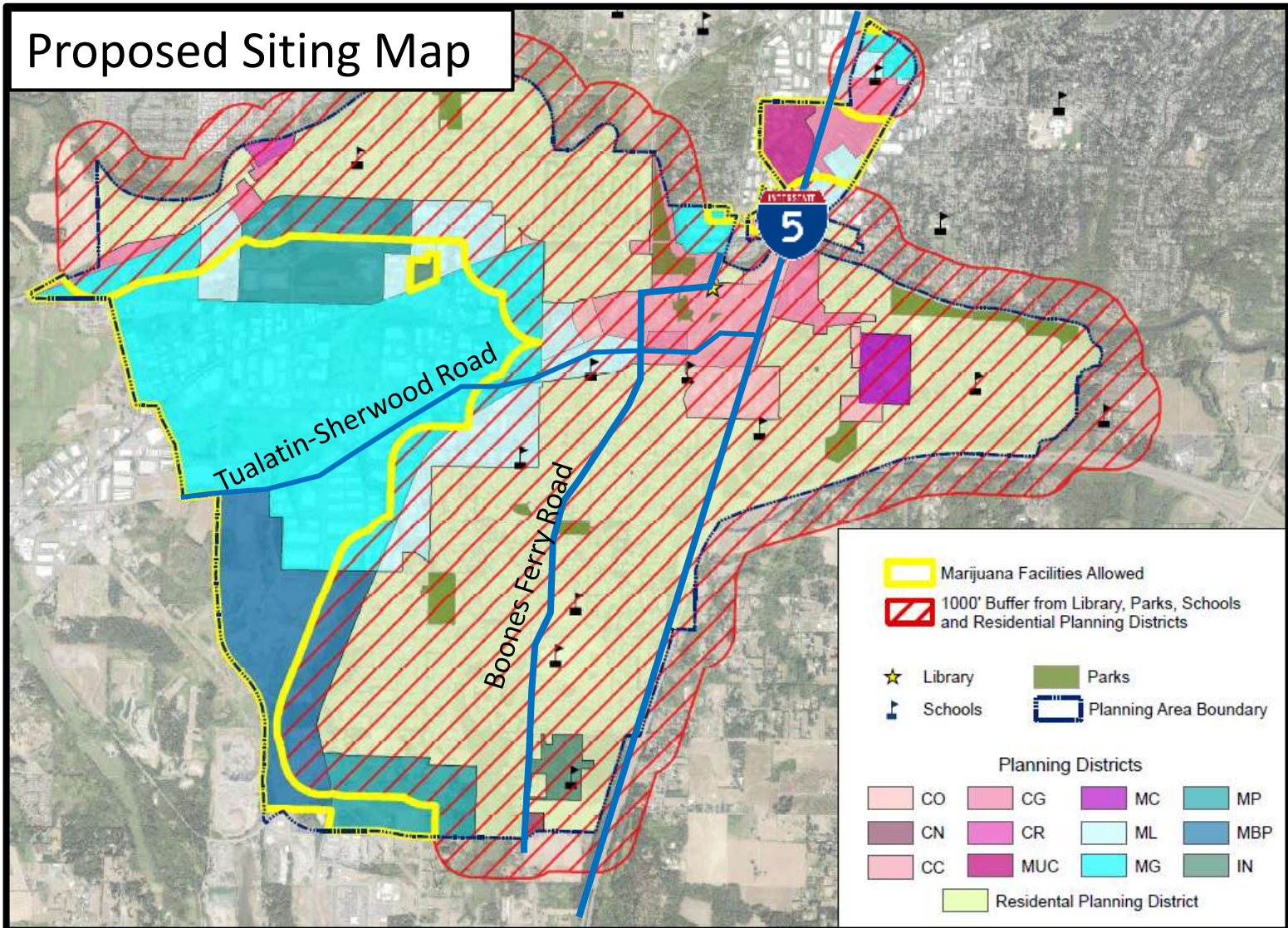
## SUMMARY OF PROPOSED TEXT AMENDMENTS

STANDARD	EXISTING CODE	PTA 20-0006
<i>Reference</i>	<ul style="list-style-type: none"> <li>• Marijuana</li> </ul>	<ul style="list-style-type: none"> <li>• Cannabis</li> </ul>
<i>Zones permitted in:</i>	<p><i>All Marijuana Facilities:</i></p> <ul style="list-style-type: none"> <li>• Light Manufacturing</li> <li>• General Manufacturing</li> <li>• Manufacturing Business Park</li> </ul>	<p><i>All Cannabis Facilities:</i></p> <ul style="list-style-type: none"> <li>• Light Manufacturing</li> <li>• General Manufacturing</li> <li>• Manufacturing Business Park</li> </ul> <p><i>Retail Sales &amp; Medical Dispensary:</i></p> <ul style="list-style-type: none"> <li>• Office Commercial</li> <li>• Neighborhood Commercial</li> <li>• Recreation Commercial</li> <li>• General Commercial</li> <li>• Mid Rise/Office Commercial</li> <li>• Medical Center</li> <li>• Mixed Use Commercial</li> </ul>
<p><i>Buffer from:</i></p> <ul style="list-style-type: none"> <li>• Residential Zones</li> <li>• City Parks</li> <li>• Schools</li> <li>• Library</li> </ul>	3,000 feet	1,000 feet
<i>Buffer between Cannabis Facilities:</i>	2,000 feet	1,000 feet
<i>Limitations on Facility size</i>	Cannot exceed 3,000 square feet	None





# Proposed Siting Map



# RECOMMENDATION

Staff recommends that the Planning Commission forward a recommendation of approval of the proposed amendments to the City Council. The proposed amendments have been made at the direction of Council and based on community input.

The Commission may alternatively forward a recommendation of approval with additional recommended changes, or a recommendation of denial.

# QUESTIONS?

