



Purple Pipe IGA

April 27, 2026

Water Management and Conservation Plan



1. Describes the water system and its needs
2. Identifies its sources of water
3. Explains present and future management/conservation needs



Why do we need one?



Required by the City's contract with the Portland Water Bureau (OAR 690-086)



Climate Action Plan (Action 4.1.7)



Identified Council Interest

Ch. 3 – Water Conservation Element



Basic Measures - Required of All Suppliers

Enhanced Measures - Required of Select Suppliers

Benchmarks - Specific water conservation actions that a supplier commits to doing within the next five years.



Enhanced Measure



Measure - Reuse, Recycling, Non-Potable Opportunities

- Consider how reuse, recycling, and use of non-potable water could reduce the need for raw water.

Proposed Benchmark

- Explore expanding the CWS Durham Treatment Plant's Purple Pipeline.



Why Explore Purple Pipe?



Tualatin currently uses potable water for irrigation

- Recycled water would be appropriate and more cost effective

CWS Durhman Treatment Plant

- Produces recycled water and can deliver to these areas

Supports

- Climate Action Plan 1.1.9
- Council Priority 2026 Action 5.6
- WMCP Enhanced Conservation Measure (Reuse)

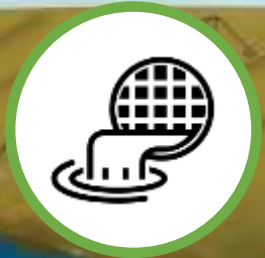


How Water Reuse Began at CWS (The Why)

- 1991: Regulatory strategy, TMDL phosphorus
 - 1 MGD peak
 - Stable program for past 30 years
- 2013-2019: Pure Water Brew moves from an idea to approved for commercial use (One Water)
- 2020s: Regulatory strategy – thermal management
 - Expand program to 15 MGD
 - Environmental restoration
 - Partnership-driven
 - Diverse water management



Program Objectives



**Keep thermal energy
out of the river**

Agriculture: Transfer/Exchanges

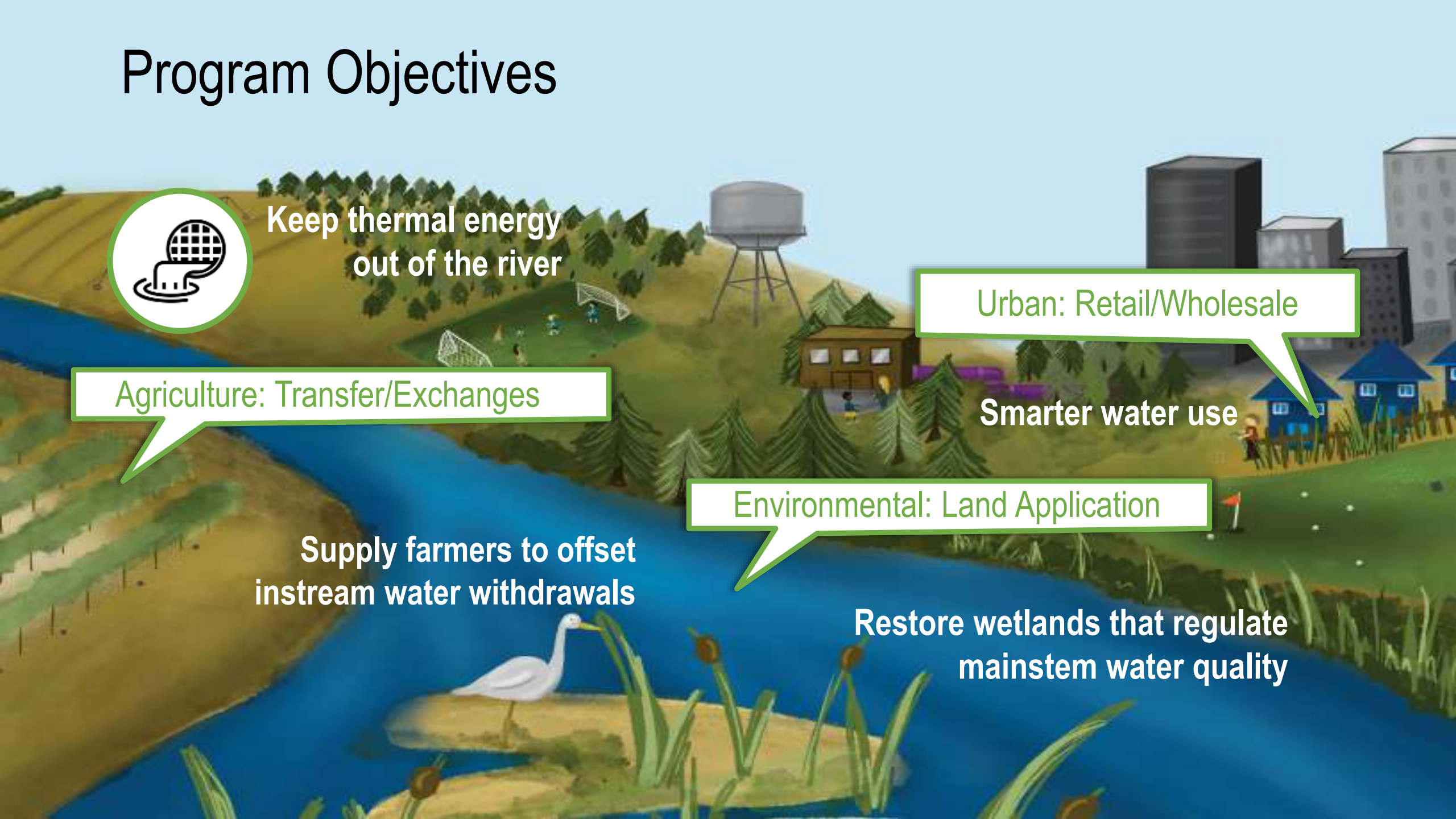
**Supply farmers to offset
instream water withdrawals**

Environmental: Land Application

**Restore wetlands that regulate
mainstem water quality**

Urban: Retail/Wholesale

Smarter water use



Numerous Benefits



**Watershed
Protection**



**Smarter
Potable Water
Use**



**Temperature
Compliance**



Cost Savings



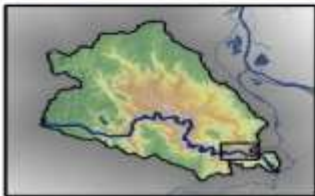
**Restoring
Natural Areas**



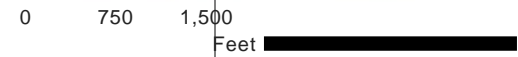
**Climate
Impact
Resilience**



**Protecting
Habitat**



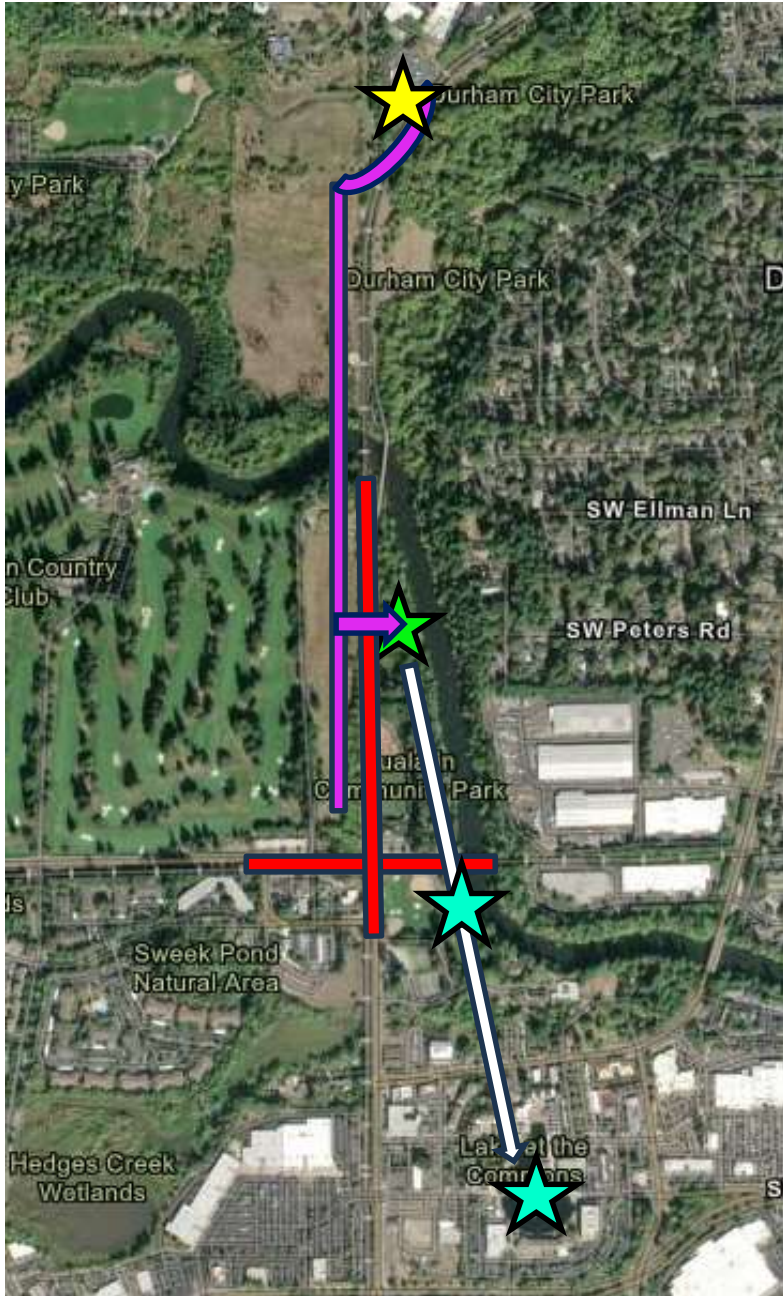
Clean Water Services - Recycled Water Use Plan
Class A Recycled Water from Durham WWTF



- Recycled Water Application Site
- District-Owned Property
- Recycled Water Customer
- Wastewater Treatment Facility

1T
 Clean Water Services

Coordinate System: GCS North American 1983 N. Projection: NAD1983HARNStatePlane Oregon North FIPS 3601 Feet Unit Source: Ocean World Services. Last Saved By: BakerR on 1/11/2021 11:11 PM. Total Data: C0014 Oregon Metro www.oregonmetro.gov Disclaimer: This map and the data represented are not authoritative and are subject to change. This was created for reference and is not intended as a definitive property description. All users of this information should verify the accuracy of the information before commencing any plan, design, construction, or other activities. Further, there are no warranties, express or implied, including the warranty of merchantability or fitness for a particular purpose, concerning this information.



Currently...



Durham Treatment Plant



Current Location of Purple Pipe



TCP Purple Pipe Stub



Railroad



Future Purple Pipe Connections

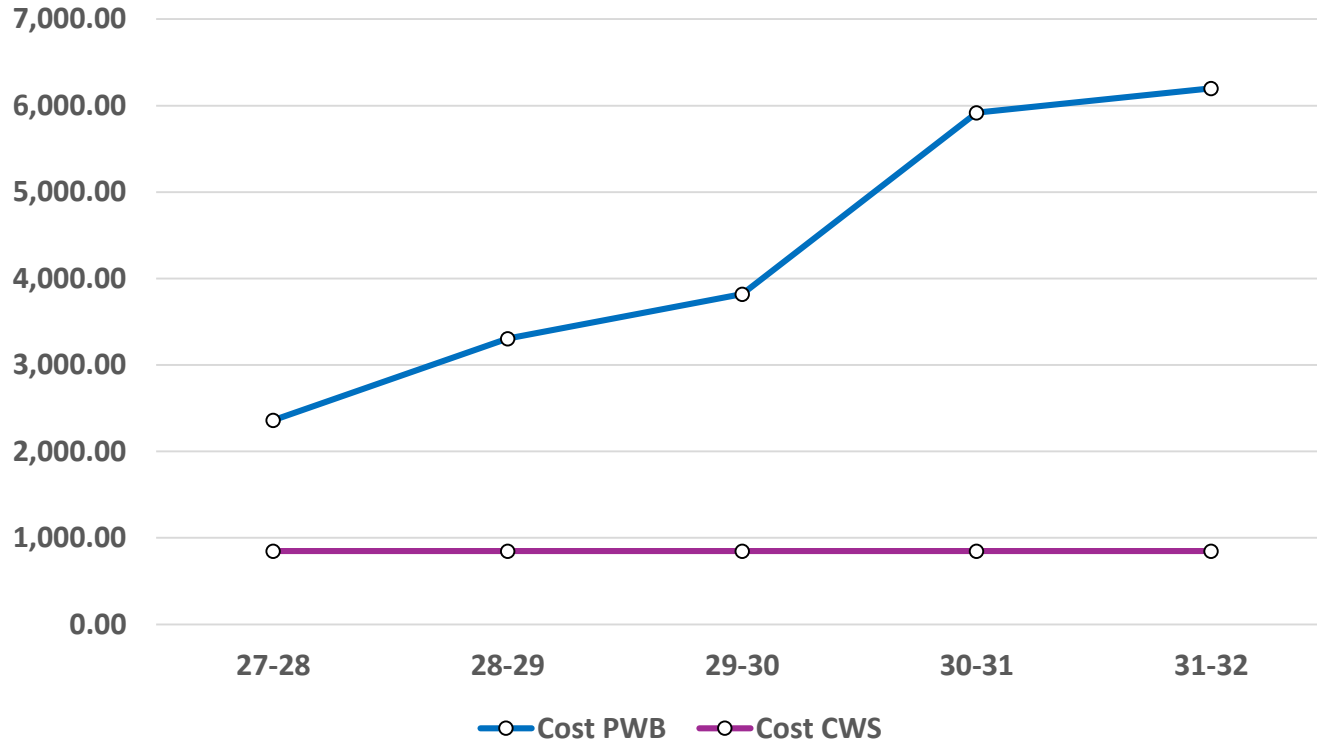


Future Location of Purple Pipe

City's Cost Benefit of Purple Pipe



TCP Total Irrigation



~5 year Percentage Savings = 80%

~5 year Cost Savings = \$17,367



Purple Pipe IGA



IGA allows CWS to:

- Construct, connect, and maintain purple pipeline to NE section of TCP

IGA allows City to:

- Use recycled water for irrigation in the NE section of TCP
- Pay \$1.00 per hundred cubic feet during terms of the agreement

Request:

- Approve Resolution #5955-26 Authorizing the City Manager to Execute an Intergovernmental Agreement with Clean Water Services for Recycled Water

