



# Quarterly Update

**City Council**  
**May 11, 2020**

Construction



Project updates

Program update

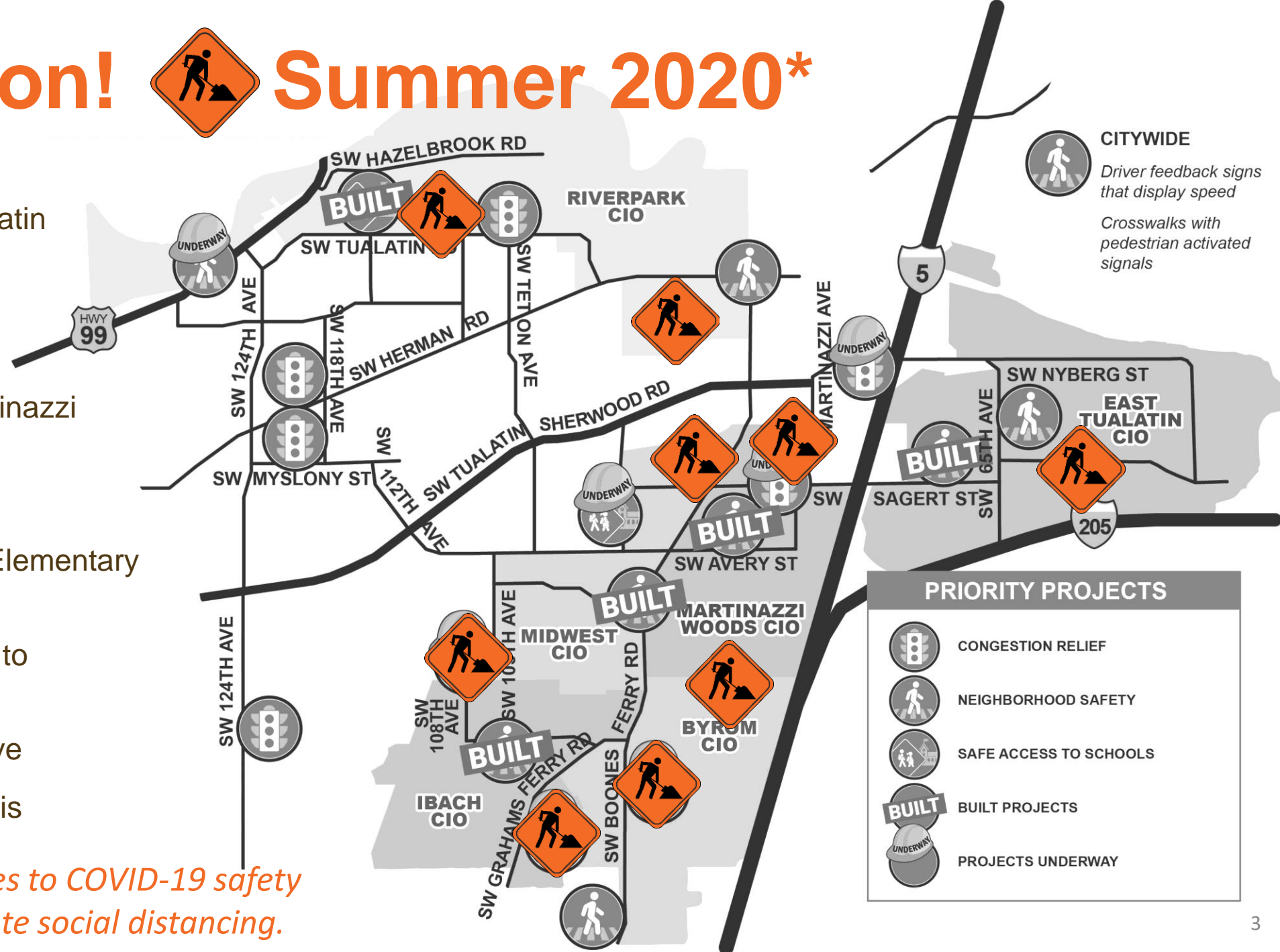
What's next



# Construction! Summer 2020\*

1. Garden Corner Curves
2. Boones Ferry Rd at Tualatin High School
3. Grahams Ferry Rd and Dogwood St
4. Mohawk St: East of Martinazzi at PGE
5. 90th Ave and Sweek Dr
6. Borland Rd: Bridgeport Elementary to 60th Ave
7. Martinazzi Ave: Avery St to Dakota Ave
8. Tualatin Rd and 112th Ave
9. Nasoma Ln: Near Marquis

*\*2020 construction adheres to COVID-19 safety standards with appropriate social distancing.*



**CITYWIDE**  
 Driver feedback signs that display speed  
 Crosswalks with pedestrian activated signals

PRIORITY PROJECTS	
	CONGESTION RELIEF
	NEIGHBORHOOD SAFETY
	SAFE ACCESS TO SCHOOLS
	BUILT PROJECTS
	PROJECTS UNDERWAY

# Being Designed

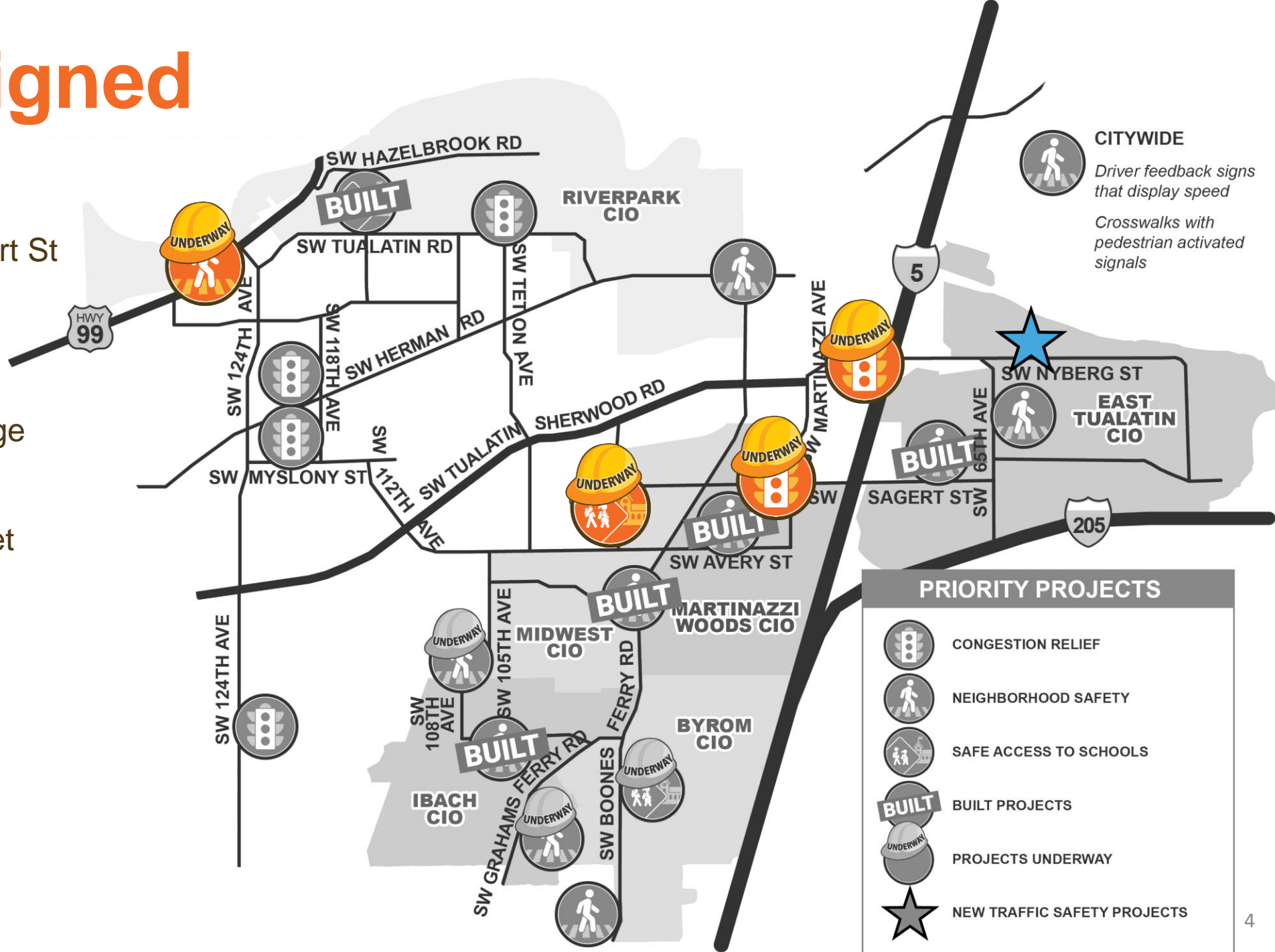
Martinazzi Ave and Sagert St

Tualatin-Sherwood Rd:  
Martinazzi to I-5

Highway 99W: Pony Ridge  
to 124th Ave

95th Ave and Avery Street

Nyberg Lane: 50th Ave  
to 65th Ave





# Budget Update

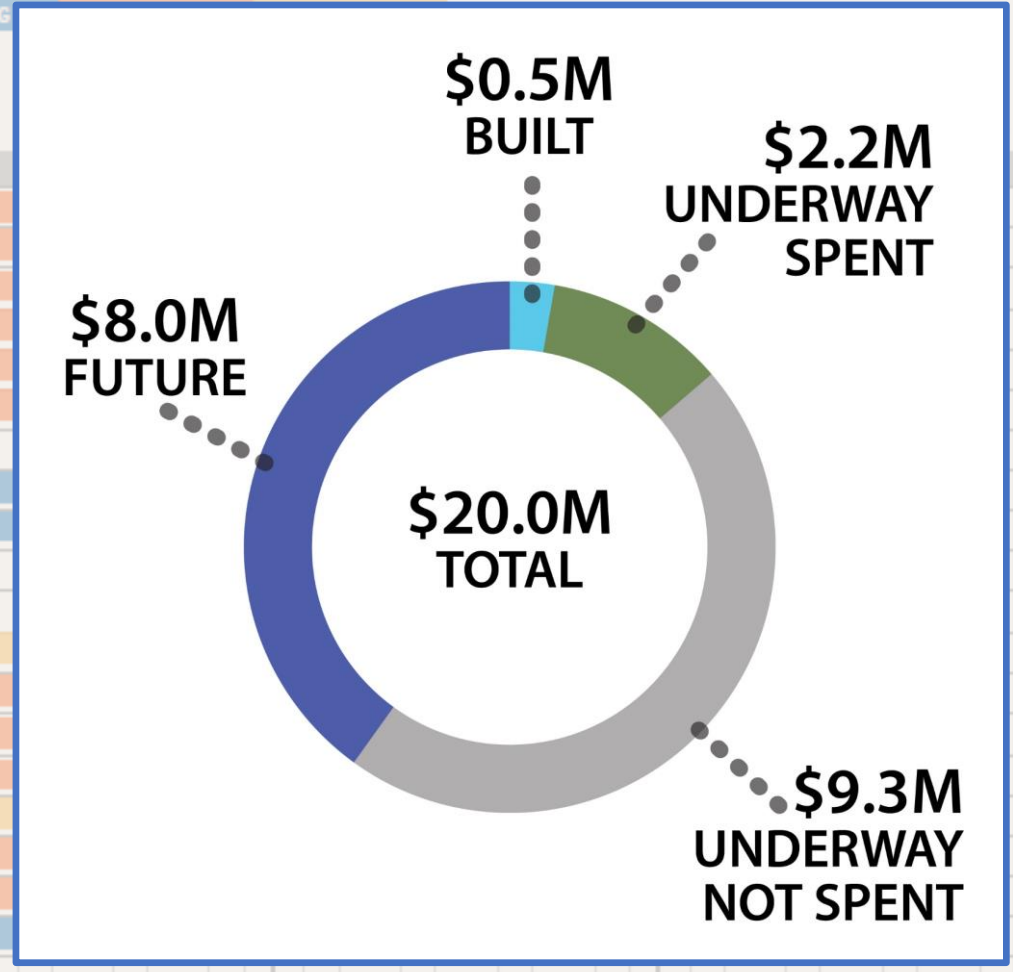
*Half of Bond Funds are Programmed or Spent*

**TUALATIN MOVING FORWARD BOND PROGRAM**  
OVERALL PROGRAM/PROJECT SCHEDULE

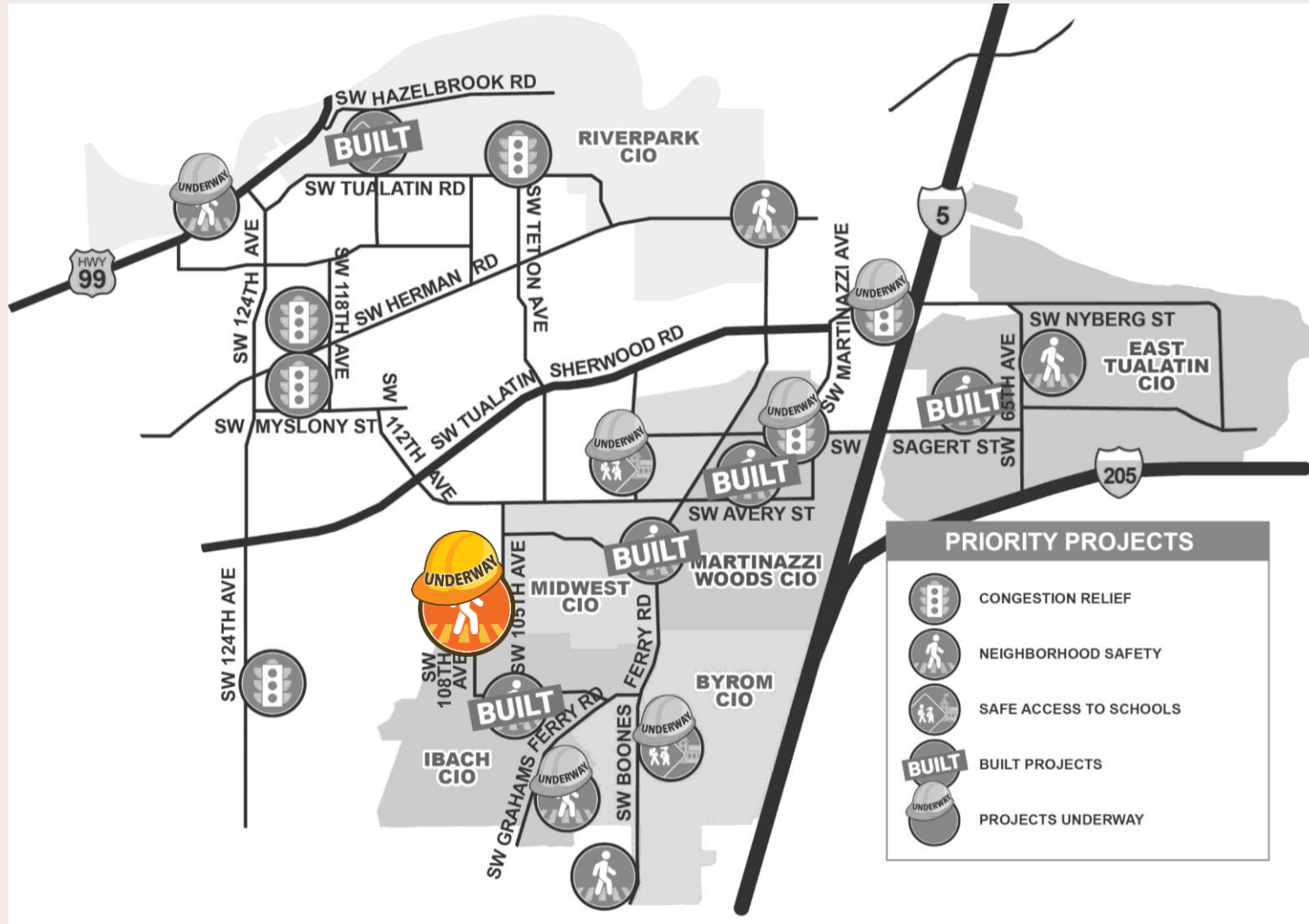
PHASES: **PLANNING**

**CURRENT PROJECTS**

PROJECT	2018		2019				Q1
	Q3	Q4	Q1	Q2	Q3	Q4	
P6 - Garden Corner Curves: Moratoc Dr to Willow St	[Orange bar from Q4 2018 to Q1 2019]						
Martinazzi Ave and Sagert St (TO4)			[Blue bar from Q2 2019 to Q3 2019]		[Orange bar from Q3 2019 to Q1 2020]		
Tualatin-Sherwood Rd: Martinazzi to I-5 (TO5)			[Blue bar from Q2 2019 to Q3 2019]		[Orange bar from Q3 2019 to Q1 2020]		
Hwy 99W: Pony Ridge Neighborhood to 124th Ave (TO6)			[Blue bar from Q2 2019 to Q3 2019]		[Orange bar from Q3 2019 to Q1 2020]		
Boones Ferry Rd at High School (TO7)			[Blue bar from Q2 2019 to Q3 2019]		[Orange bar from Q3 2019 to Q1 2020]		
Grahams Ferry Rd and Dogwood St (TO8)				[Blue bar from Q3 2019 to Q4 2019]	[Orange bar from Q4 2019 to Q1 2020]		
65th Ave: Near Meridian Park Hospital (TO9)					[Blue bar from Q3 2019 to Q1 2020]		
95th Ave and Avery St (Tualatin Elem. Sch.) (TO10)					[Blue bar from Q3 2019 to Q1 2020]		
Tualatin Rd: Sweek Dr to Community Park (TO12)					[Blue bar from Q3 2019 to Q1 2020]		
<b>2019-2020 NEIGHBORHOOD TRAFFIC SAFETY PROJECTS</b>							
Mohawk St (E. of Martinazzi at PGE) (P8)						[Orange bar from Q4 2019 to Q1 2020]	[Yellow bar from Q1 2020 to Q2 2020]
SW 90th and Sweek Drive (TO11a)						[Orange bar from Q4 2019 to Q1 2020]	[Yellow bar from Q1 2020 to Q2 2020]
Borland Road (TO11e)						[Blue bar from Q4 2019 to Q1 2020]	[Orange bar from Q1 2020 to Q2 2020]
Nyberg St. at Browns Ferry Park (TO11b) ON HOLD						[Orange bar from Q4 2019 to Q1 2020]	[Yellow bar from Q1 2020 to Q2 2020]
Martinazzi Ave between Avery and Dakota (P9)						[Orange bar from Q4 2019 to Q1 2020]	[Yellow bar from Q1 2020 to Q2 2020]
Tualatin Rd between 112th (TO11c)						[Orange bar from Q4 2019 to Q1 2020]	[Yellow bar from Q1 2020 to Q2 2020]
Nasoma Lane near Marquis (TO11d)						[Orange bar from Q4 2019 to Q1 2020]	[Yellow bar from Q1 2020 to Q2 2020]
Citywide -Neighborhood Traffic Safety Program						[Blue bar from Q4 2019 to Q1 2020]	[Yellow bar from Q1 2020 to Q2 2020]



# Project Update – Garden Corner Curves



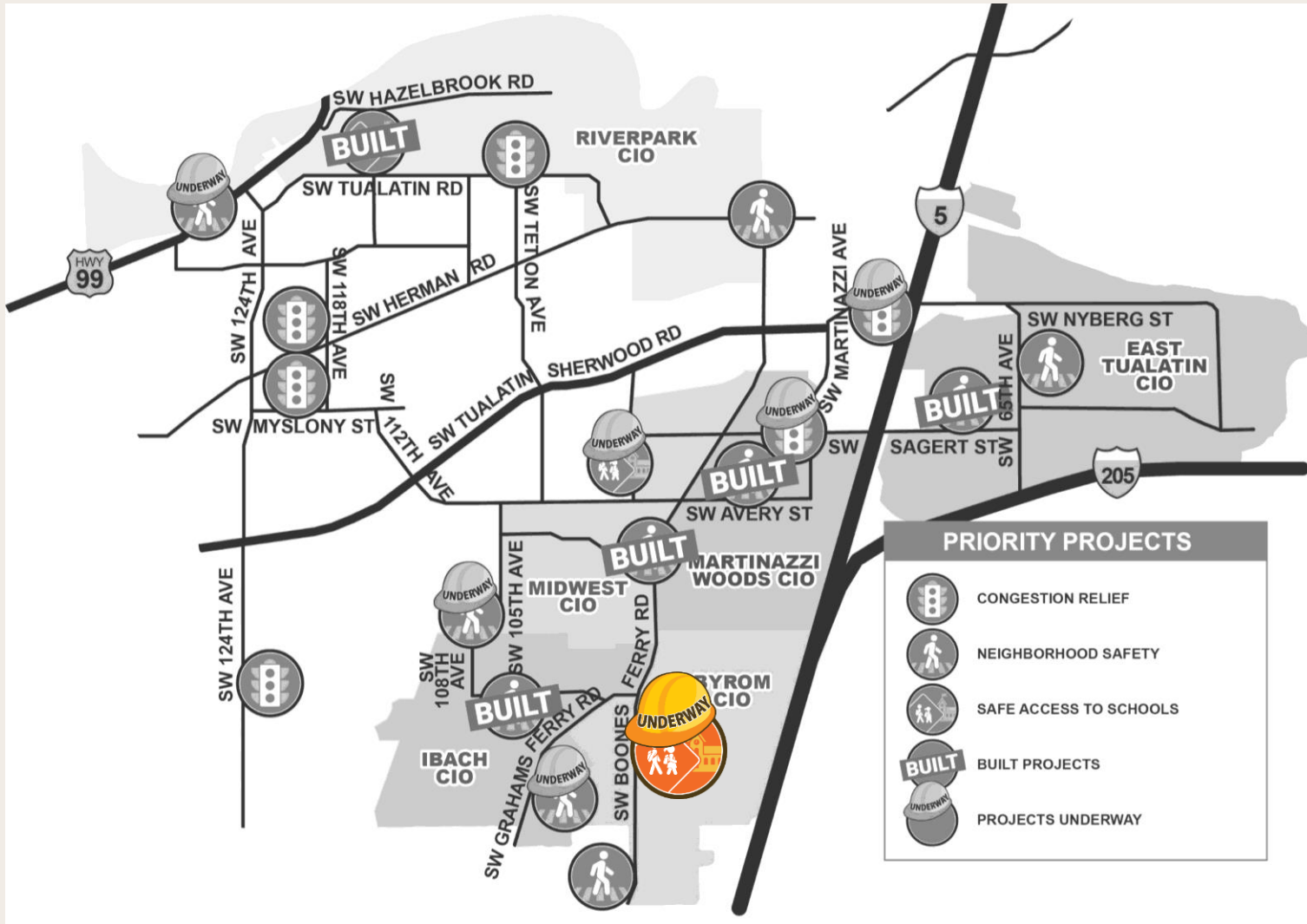
## Garden Corner Curves (Summer 2020)

- ✓ Significant safety improvement
- ✓ 105<sup>th</sup>, Blake, 108<sup>th</sup>
- ✓ New shared use path, flashing beacons at Moratoc and Blake/108<sup>th</sup>, raised crossing, driver feedback sign, visual speed reduction
- ✓ Permits in-hand!
- ✓ Property purchase underway
- ✓ Construction documents complete
- ✓ *Almost Ready for Construction*





# Project Update – Boones Ferry at Tualatin High School

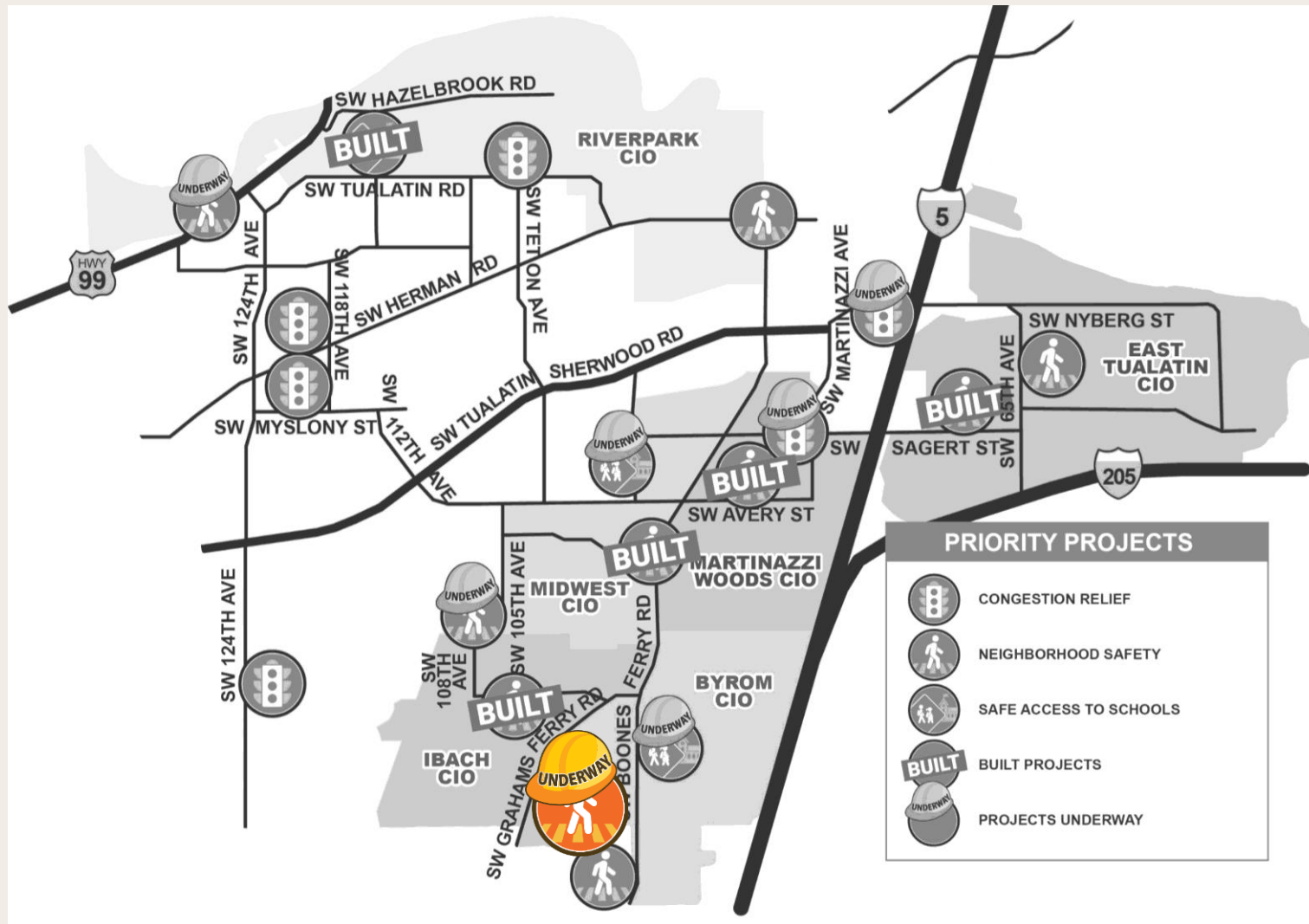


## Boones Ferry at Tualatin High School (Summer 2020)


- ✓ Improve safe access to the high school
- ✓ New mid-block crosswalk with flashing beacons at Alabama
- ✓ Sidewalk infill along west side of Boones Ferry; bike lanes extended southbound
- ✓ Stormwater improvements
- ✓ Signal interval lanes for pedestrians at Ibach and Boones Ferry



# Project Update – Grahams Ferry Road at Dogwood Street



## Grahams Ferry Road at Dogwood Street (Summer 2020)

- ✓ New pedestrian crossing to improve safety on County road
- ✓ New crosswalk, pedestrian-activated signal with flashing beacons, improved street lighting at crosswalk, and ADA improvements
- ✓ *Ready for Construction!* 
- ✓ Washington County approval
- ✓ Pre-ordered pedestrian-activated signal with flashing beacons to save time



Have a traffic safety problem in your neighborhood?

We may have solutions...



Safe crosswalks



Traffic calming



Bicycle safety

Let the City know by June 30 to be considered.  
Go to [www.tualatinmovingforward.com](http://www.tualatinmovingforward.com)




## Now

- ü Mailings Electronic Surveys
- ü Email Updates
- ü Webinars
- ü Virtual Neighborhood Meetings
- ü Social Media
- ü Yard Signs
- ü *Tualatin Today*
- ü Quarterly Report Card/ Council Updates
- ü CIO Contacts
- ü Phone Calls


## Earlier/Later

- Kitchen Table Meetings
- Door Hangers
- Open Houses
- Community Meetings
- In-Person Meetings

- ✓ Sidewalk Art Contest – *Extended to June 1*
- ✓ Call for Projects – now through June 30
- ✓ **Summer construction!** 
- ✓ Continue Project Design and Permitting
- ✓ Start Design/Permitting for:
  - Sidewalks on Boones Ferry Road from Warm Springs to South City Limits
  - 65th and Sagert Crossing
  - Nyberg Lane at 57th
  - Next Round of Neighborhood Traffic Safety Projects

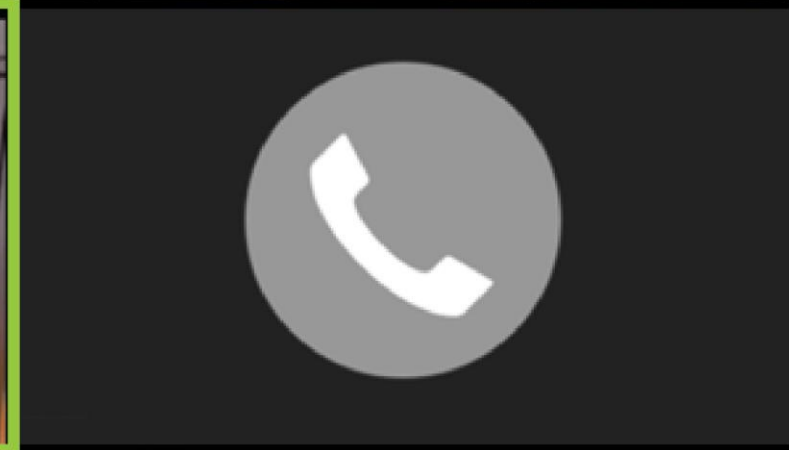


Enter Our Sidewalk  
Art Contest!

Sugerir un proyecto 

Suggest a Project 

**STAY HOME  
STAY SAFE!**



**Visit us Online: [TualatinMovingForward.com](https://TualatinMovingForward.com)**

# Questions, Comments, Suggestions?

