

2021 Quarter 2 Land Use and Transportation Update

City Council Meeting May 24, 2021



Purpose

1. Introduction to Kelsey Lewis, Policy Analyst
2. Highlight top projects in land use and transportation happening now

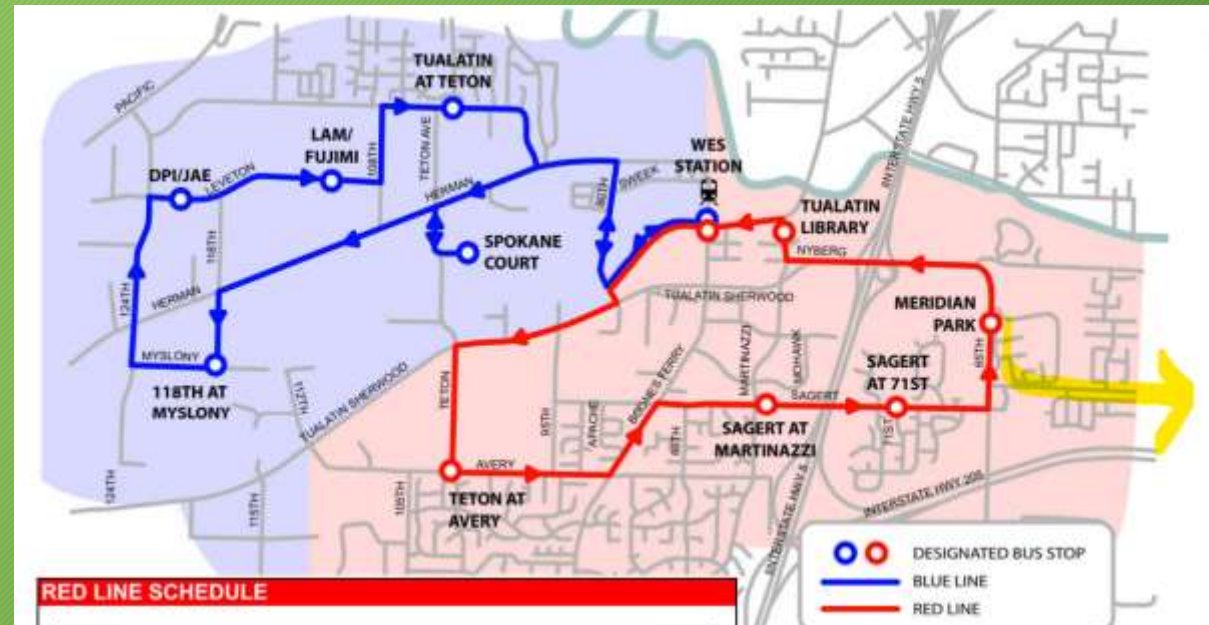
Tualatin Shuttle Service Improvements

- Extending hours
- New service on Borland Road and I-205



Tualatin Shuttle Service Improvements

- New service will connect Tualatin Shuttle Red Loop with Meridian Park Hospital before heading east on Borland Road to meet SMART at Stafford Rd
- Public involvement to announce changes this summer



Boones Ferry Corridor Federal Funding

- Boones Ferry Corridor Bike Lane and Sidewalk project underway in the Tualatin Moving Forward bond program
- Tualatin submitted proposal for federal funding in April
- Mayor Bubenik participated in call with Congresswoman Bonamici

Jobs, Climate Action, Transit & Safety (JCATS):
Greater Portland's 2021 Transportation Earmark Package

Boones Ferry Active Transportation Corridor

City of Tualatin

Project description

Accessible cycling and walking improvements on Boones Ferry Road from Warm Springs St. to Norwood Rd., including buffered bike lanes, sidewalks, crosswalks and signage.

Community benefits

- Provides bicycle and pedestrian access through Tualatin's largest residential zone connecting jobs to housing
- Provides alternative travel options for everyone to reduce dependence on cars
- Replaces or constructs 1.5 miles of sidewalk and 4 miles of buffered bike lane along the 2-mile transit corridor
- Connects new affordable housing with four schools, jobs, parks, and services



Funding request

Requested earmark funding
\$4 Million

Total project cost
\$5.6 Million

Additional funding sources
Tualatin Moving Forward General
Obligation Bond: \$1.6 million

Boones Ferry Corridor Federal Funding

- Congresswoman Bonamici's office recommended our project to the Transportation and Infrastructure Committee in late April
- Possible consideration on the House floor in June



Regional Mobility Policy Update

- Joint effort between Metro and Oregon Dept. of Transportation (ODOT)
- Effort to update how we define mobility in the Regional Transportation Plan



Regional Mobility Policy Update

Currently using a vehicle based measure- volume to capacity ratio (v/c)

Evaluating new measures other than volume to capacity such as:

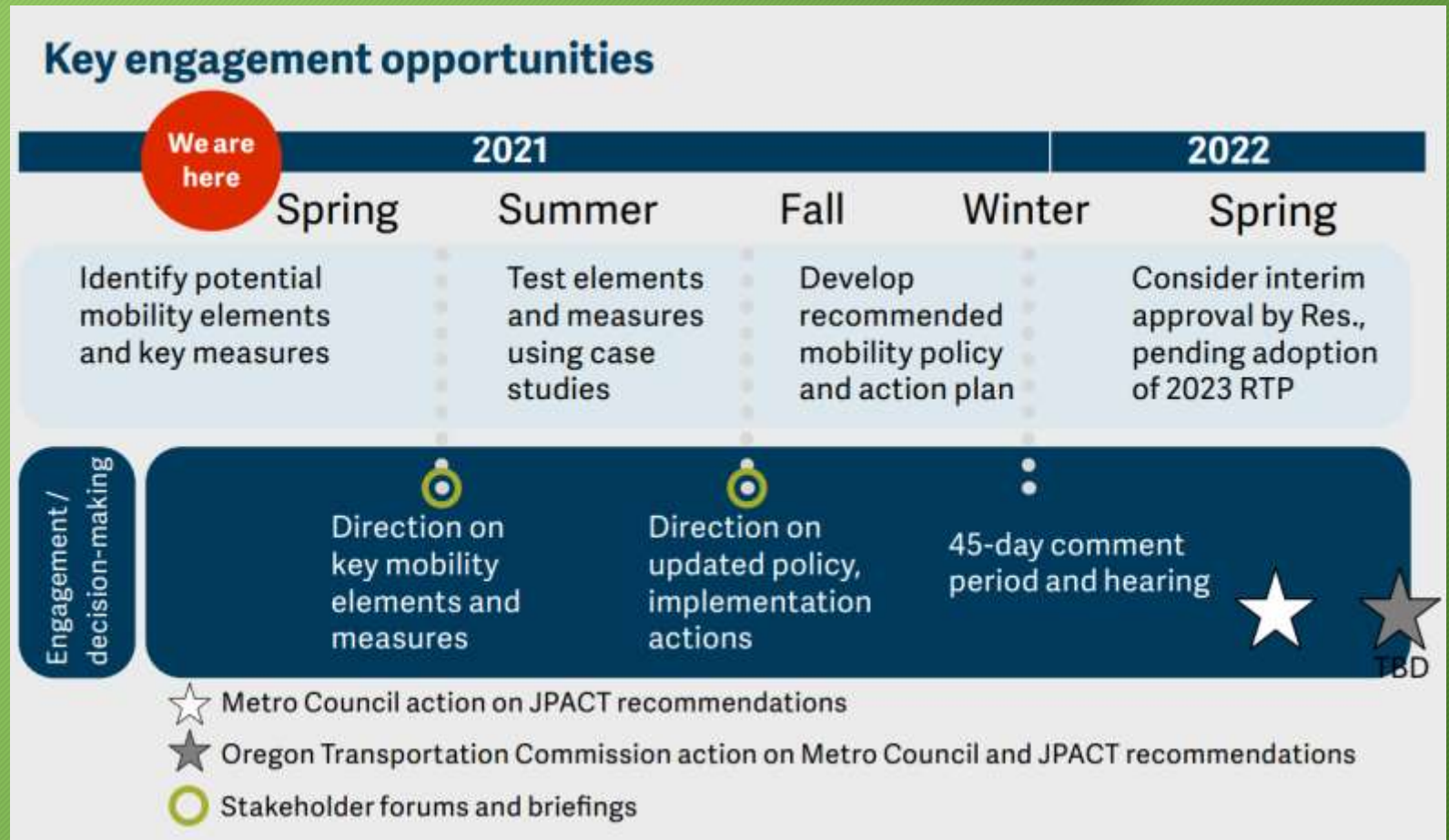
- Multimodal level of service
- Level of traffic stress
- Pedestrian crossing index



Regional Mobility Policy Update

Benefits for Tualatin

- More options
- Holistic approach to mobility
- Could incorporate into our TSP in future



I-205 Tolling Study

ODOT studying three alternatives after public comment in 2020

Staff participating in equity committee (EMAC)



I-205 Tolling Study Timeline



Questions?

Kelsey Lewis, Policy Analyst

klewis@tualatin.gov

503-691-3032