



City of Tualatin

Small Cell Lease Agreement

City Council – General Business

May 28, 2024



CITY OF

TUALATIN OREGON

Agenda

Small cell overview

Lease Agreement overview

Small Cell Process

Request authorization for City Manager to execute lease agreement

Questions/ Discussion

Small Cell Overview - Timeline

September 2018 – FCC 18-133 (Small Cell Order)

Sept. & Nov. 2018 – Council & staff work on small cell standards and fees

December 2018 – Council adopts construction standards and fees

February 2024 – Crown Castle shows interest in Tualatin sites

May 2024 – Lease agreement with Crown Castle to Council

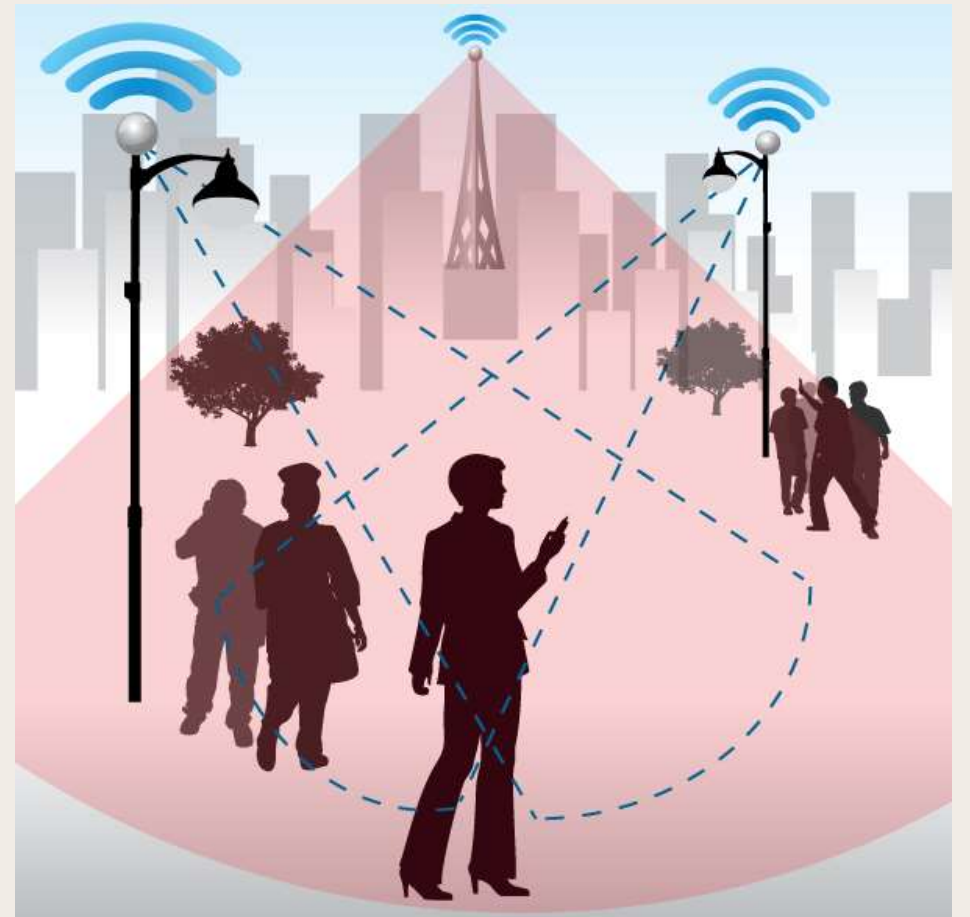
Small Cell Overview – What are they?

Increase coverage capacity in targeted high traffic areas

Extend coverage in hard-to-reach locations

Shorter range systems

Compliment large towers



Small Cell Overview – Why do we want them?

Improve cell coverage and speeds

Eliminate “dead zones”

Current 4G Technology / Future 5G
Technology



Small Cell Overview – What do they look like?

Most common –
streetlight & utility
pole mounted

Smaller than traditional
sites

Multiple styles



Lease Agreement Overview

Agreement between City and Crown Castle to locate small cell antennas on City property

- Examples: street lights, utility poles

5 year lease term (matching rights-of-way licensing term)

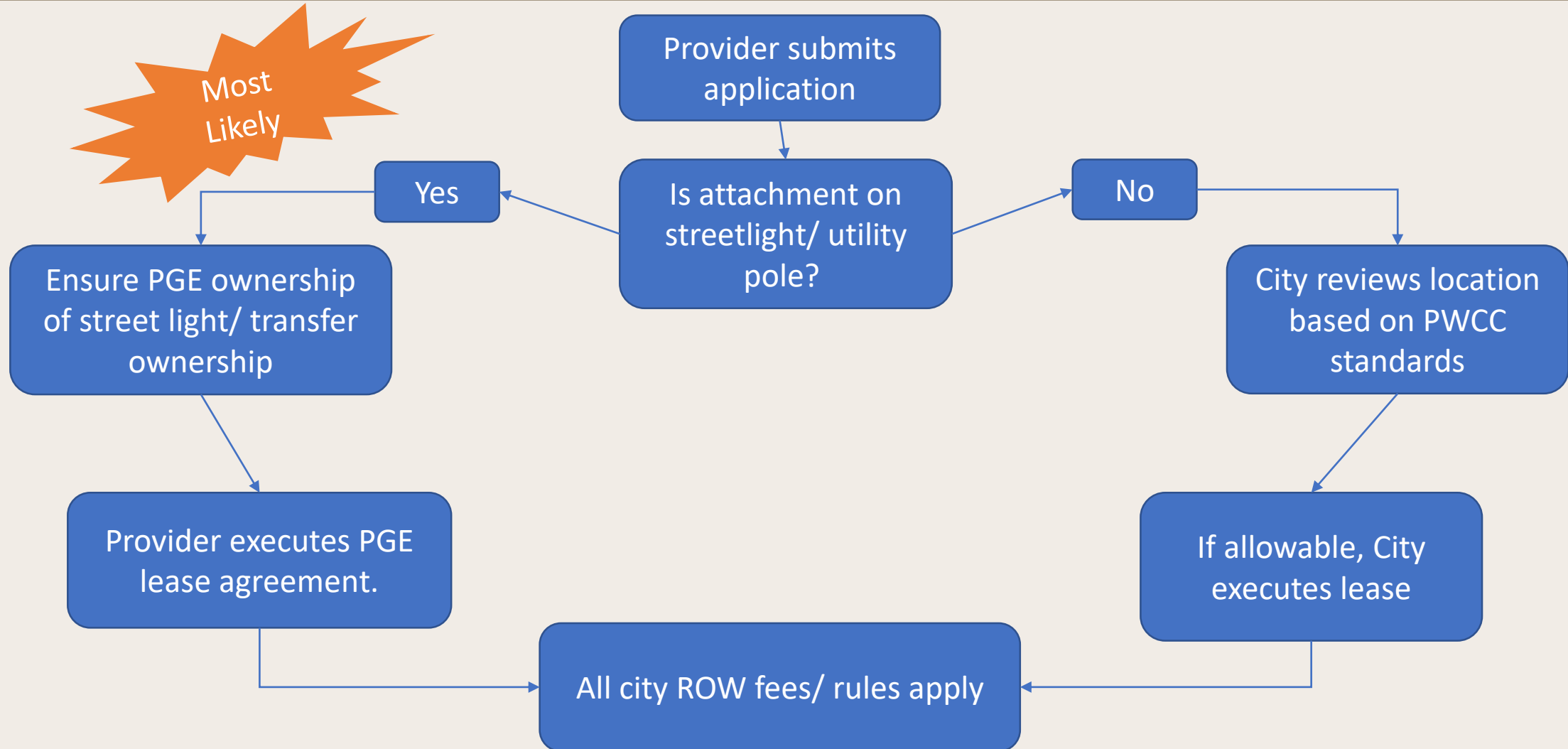
Locations to be determined by staff/ provider

\$250 usage fee per year, per site

Legal protections including insurance, compliance, permitting, construction, maintenance, dispute resolution, etc.

Aligns with existing rights-of-way Ordinance (TMC 3-6)

Small Cell Process



Staff Recommendation

Approve Resolution 5774-24 authorizing the City Manager to execute a lease agreement for small cell facilities in the rights-of-way with Crown Castle Fiber, LLC

Questions?



Potential City Fees

The table below compares City fees for a single small cell application between PGE and City owned location.

Attachments would also be subject to PGE, or location owner, fees.

	PGE Owned	City Owned
Application Fee (All)	\$660	\$660
Attachment Fee (All)	\$625/ year	\$625/ year
Usage Fee (City MLA)	Set by PGE	\$250/ year
Total	\$1,285	\$1,535