

Tualatin's Community Climate Action Plan

May 28, 2024



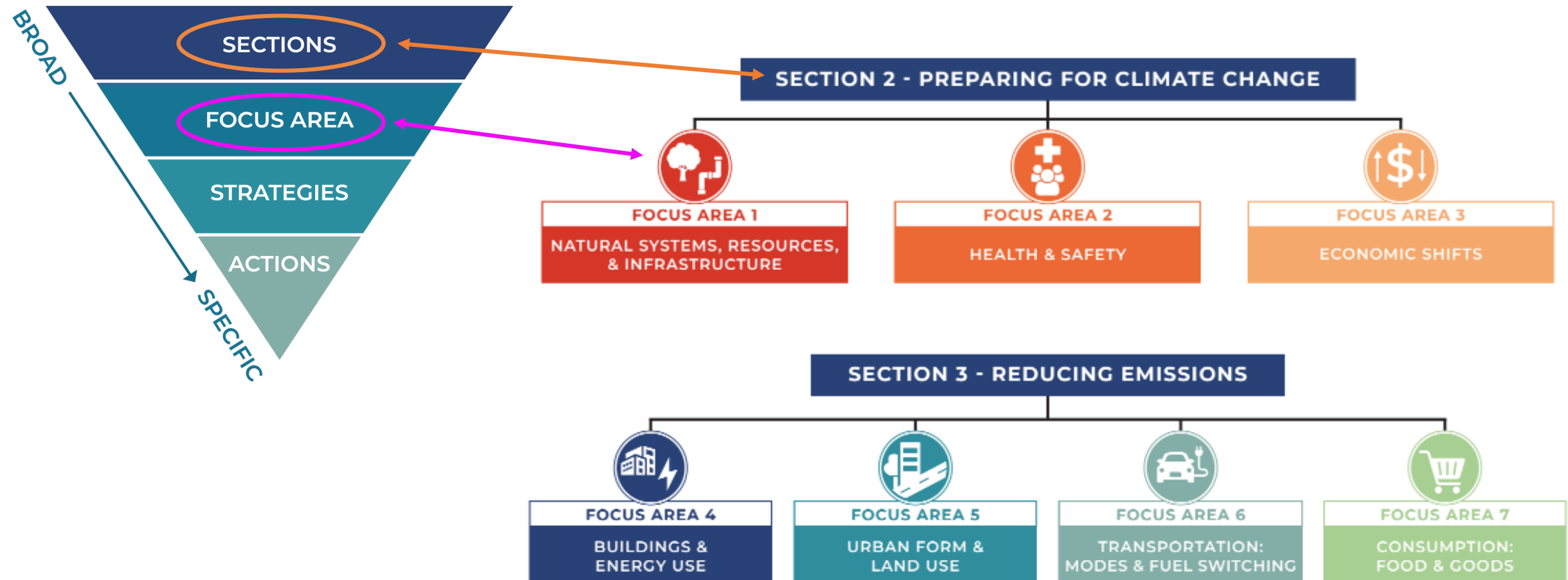
Overview

- The goal
- Plan overview
- The process
- What's happened since we last met?
- Q&A
- Consideration of Reso 5775-24

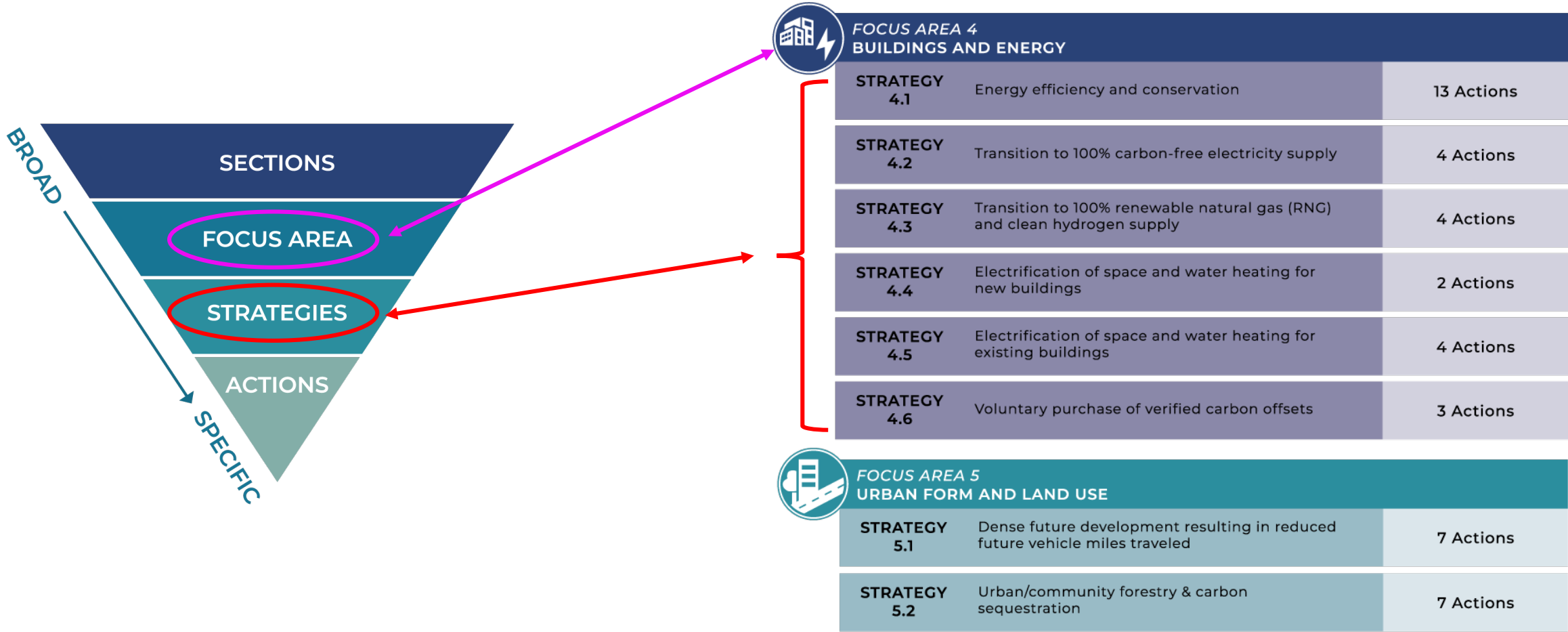
The goal

**NET
ZERO
BY
2050**

Plan overview



Plan overview



Plan overview



Strategy 4.1 // Energy efficiency and conservation

GHG BENEFIT (MT CO₂e AVOIDED) COST PER MT CO₂e REDUCED

LOW MED HIGH \$ cost neutral (-\$10 to \$10/MT)

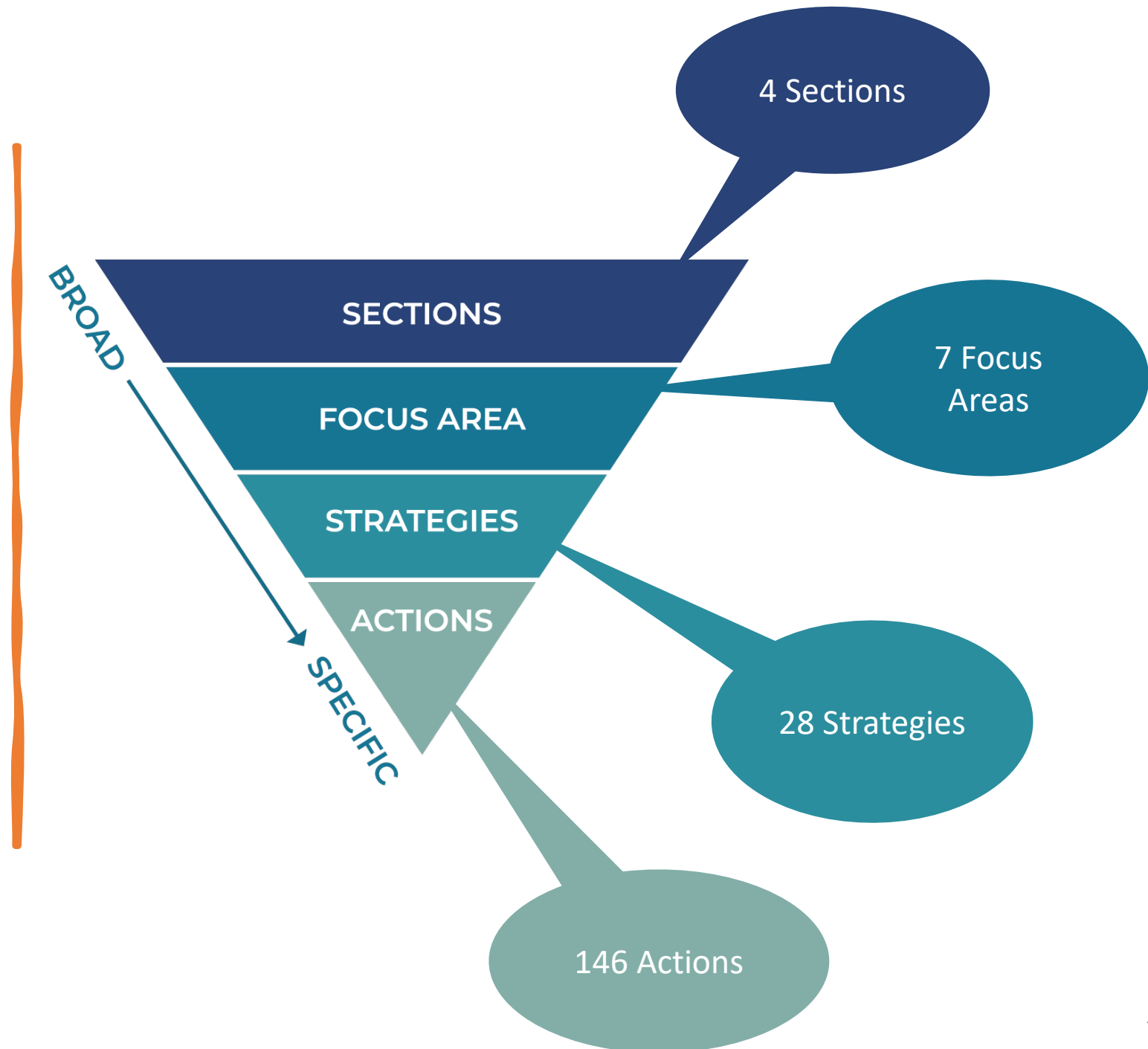
Actions

ACTION	STAKEHOLDERS, PROGRAMS, & PLANNING/POLICY DOCUMENTS	COT ROLE	CHARACTERISTICS	CO-BENEFITS	POLICY DECISION
<p>4.1.1 Upgrade building envelopes, including roofs, walls, windows, doors, and foundations, to improve barriers between exterior and internal environments in buildings and increase efficiency. Strategies to upgrade building envelopes could include educating about, incentivizing, or requiring white or green roofs, passive cooling strategies, draft protection for doors, improved insulation, etc.</p>	<p>STAKEHOLDERS</p> <ul style="list-style-type: none"> City of Tualatin Community Development Department Energy Trust of Oregon (ETO) Community Action <p>PROGRAMS</p> <ul style="list-style-type: none"> ETO Residential Incentives program ETO Oregon Cash Incentives for businesses program ETO Strategic Energy Management program 		<p>M A S</p>		
<p>4.1.2 Incentivize builders, consumers, and contractors to build to the Oregon Building Codes Division's "Built Energy Smart" residential and commercial reach codes. State Executive Order 20-04 directs state agencies to reduce emissions by at least 45 percent below 1990 emissions levels by 2035 and at least 80 percent below 1990 levels by 2050. As a result, the Oregon Building Codes Division updated the residential and commercial reach codes to provide guidelines on improving energy efficiency, upgrading building envelopes, and supporting electrification.</p>	<p>STAKEHOLDER</p> <ul style="list-style-type: none"> City of Tualatin Community Development Department <p>POLICY DOCUMENTS</p> <ul style="list-style-type: none"> Municipal code Development code 		<p>M A S</p>		

Key

M MITIGATION ACTIONS	A ADAPTATION ACTIONS	S SEQUESTRATION ACTIONS	IMPLEMENT	CONVENE	SUPPORT/ADVOCATE	QUICK START	YES, POLICY DECISION
JOBS	HEALTH & SAFETY	ECOSYSTEM & WILDLIFE HEALTH	OPPORTUNITY FOR EQUITY	COMMUNITY ACCEPTANCE	0-5 YRS	6-10 YRS	10+ YRS
						ALIGNMENT WITH COUNCIL VISION (0-7)	

Plan overview





Plan overview

Key Outcomes

Preparing for climate change (*adaptation*)

- Protecting natural systems and infrastructure
- Protecting people
- Protecting jobs

Reducing emissions (*mitigation*)

- Reduce building emissions
- More efficient use of land
- Reduce car dependency
- Reduce consumption

Position the City for action (*implementation*)

- Clear roadmap
- Accountability & measurable outcomes
- Alignment with regional partners
- Good position for external funding

The process

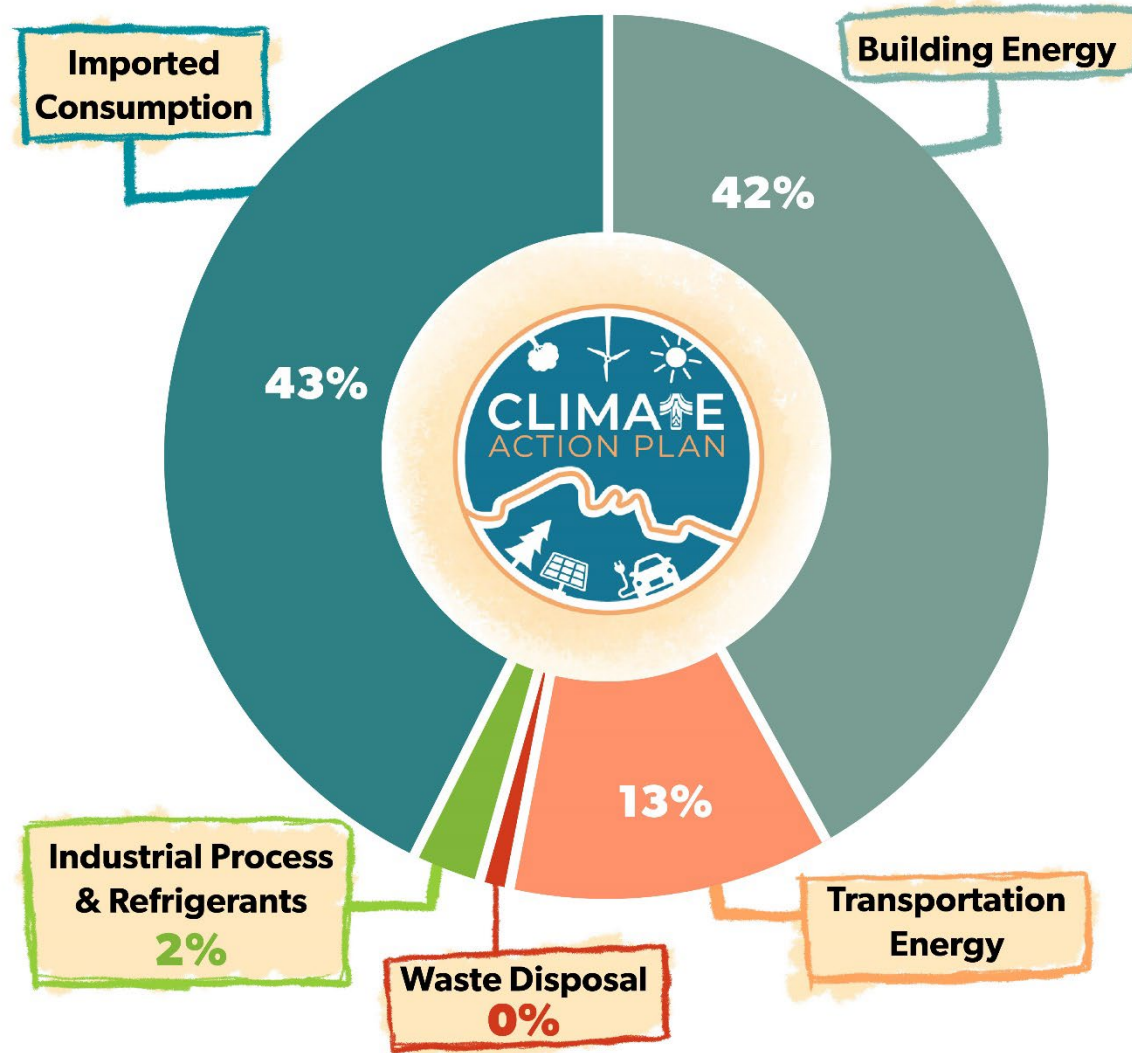
Four guiding principles.

SCIENCE-BASED	The emissions reductions actions included in the Climate Action Plan meet or exceed existing regional and state level greenhouse gas and climate action-related policies and plans. Actions are based on the most up-to-date climate science and are proportional to the magnitude of the climate crisis.
EQUITY	The Climate Action Plan includes projected impacts on different communities and groups within Tualatin. Examples of groups within Tualatin that were considered include, but are not limited to, low-income people and families, Black, indigenous, and people of color (BIPOC) communities, students and youth, and the business community.
COMMUNITY BENEFITS	The Climate Action Plan highlights the benefits of climate action and focus on the potential of the plan to improve community well-being.
PARTNERSHIP	The Climate Action Plan identifies actions Tualatin can take to meet its climate goals and partners that Tualatin can collaborate with to make progress towards these goals.



The process

Science Based



TOTAL COMMUNITY EMISSIONS
677,000 METRIC TONS OF CARBON DIOXIDE EQUIVALENTS



The process

Community based

Phase 1

- Building awareness & understanding

Phase 2

- Creating the plan

Phase 3

- Draft plan review

The process

Partnerships



What's
happened since
we last met?

- NW Natural Comments
- Phase 3 community engagement
- Density memo (beyond VMTs)
- Final plan design
- Executive Summary



Since we met

Phase 3 engagement

What we learned

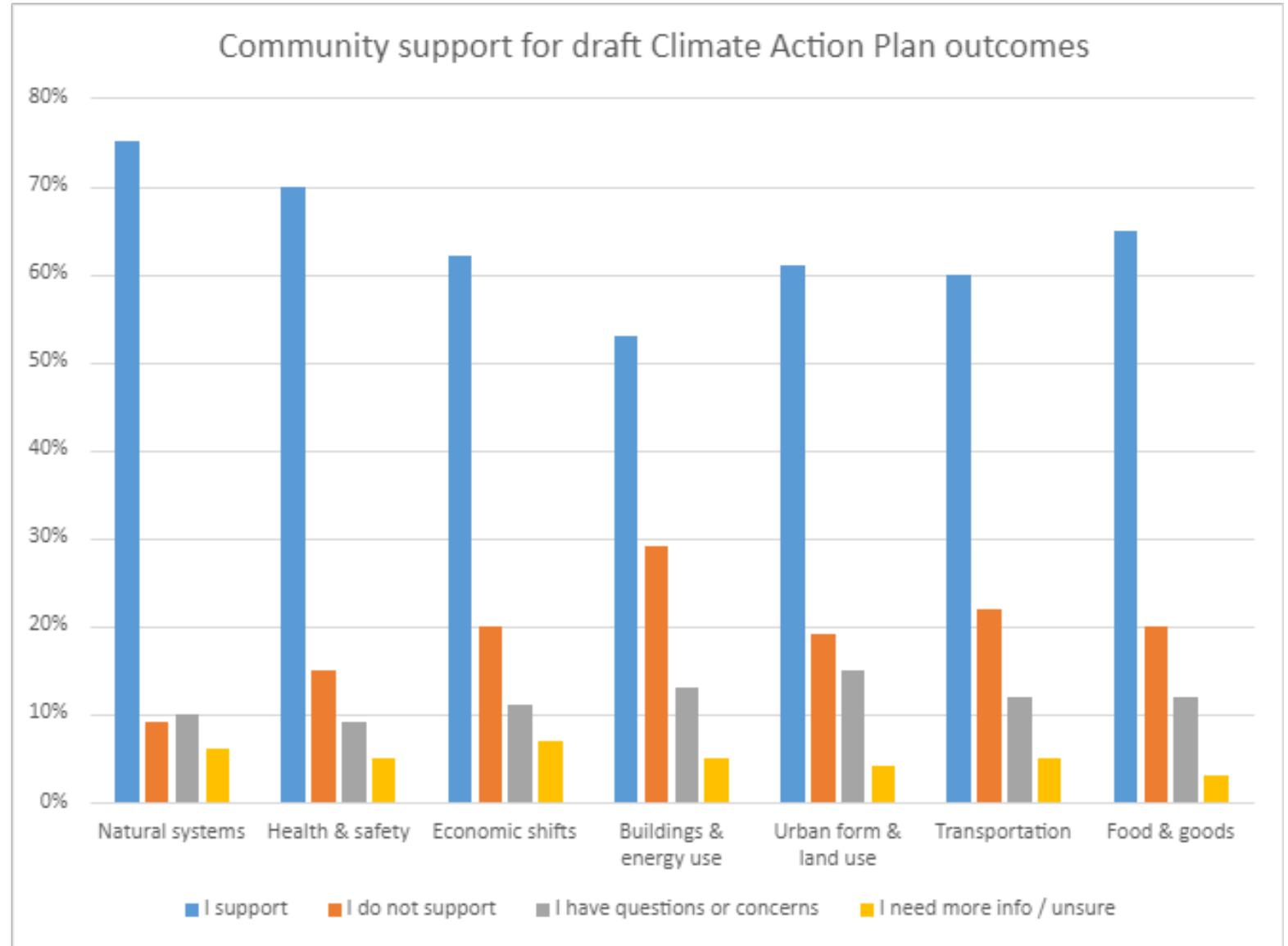
- Majority support for all outcomes
 - Protecting environment (built & natural)
 - Protecting people
 - Reducing car dependency
 - Responsible consumption
- Concerns exist
 - Cost
 - Gov. Regulations (over regulation)
 - Natural gas ban
 - Uncertainty about density

Impact to plan

- Updated community support
- Context for implementation

Since we Met

Phase 3
engagement





NW Natural

Since we met

NW Natural
comments

Summary of comments

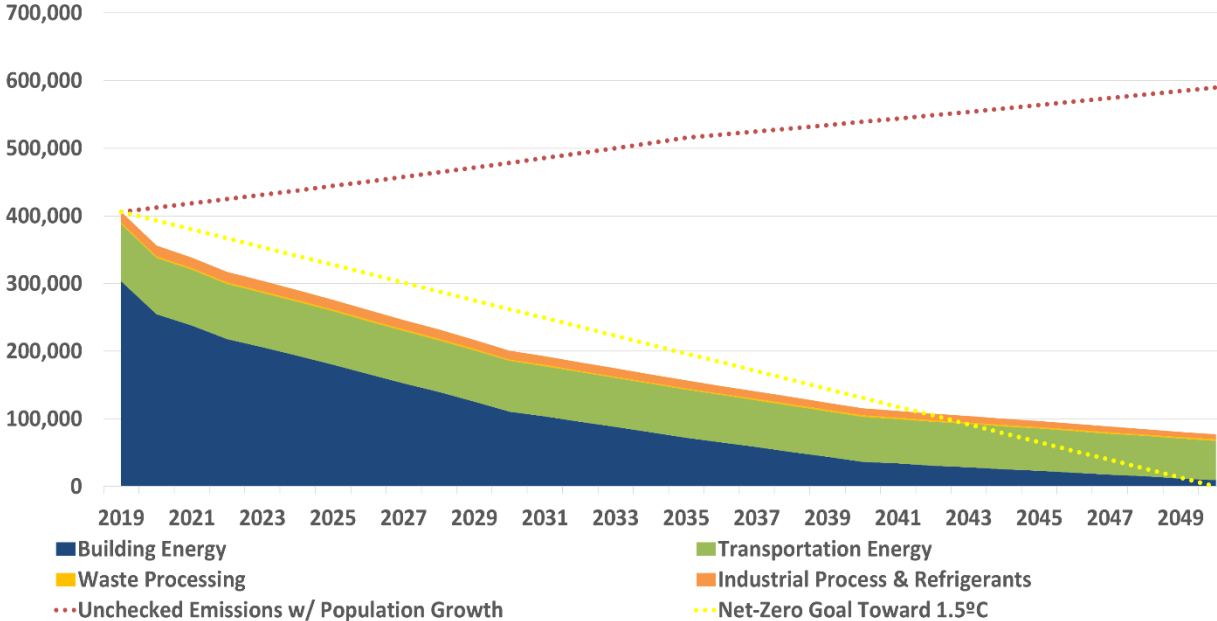
- Concerns over methodology
- Reliance on Climate Protection Program (CPP)
- Comments regarding action language and NW Natural technology and programs

Impact to plan

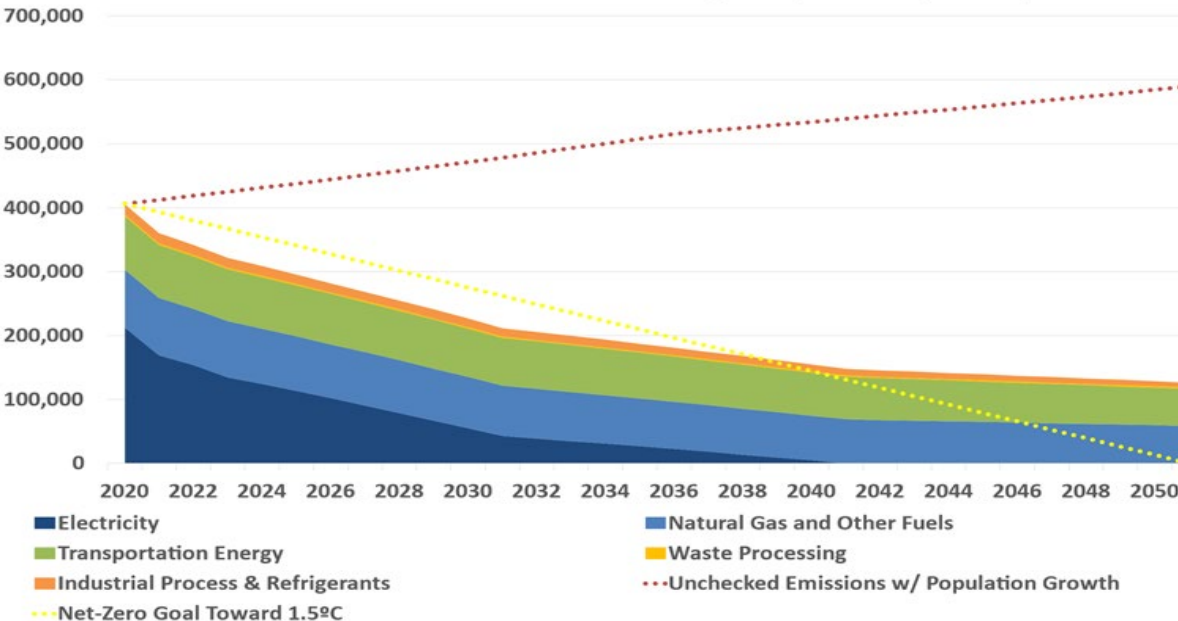
- Updates to action language and NW Natural technology and programs
- Retained all actions

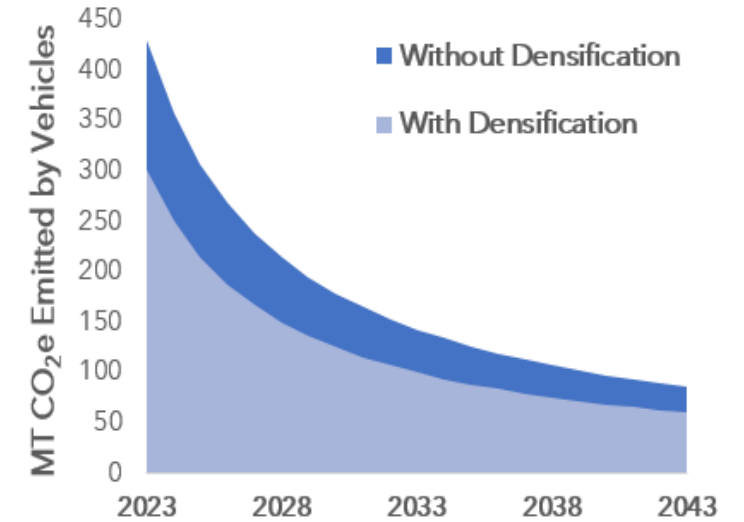
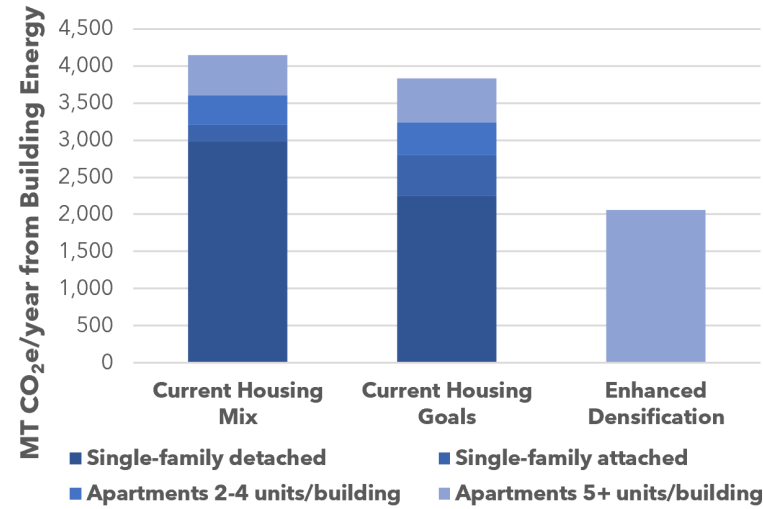
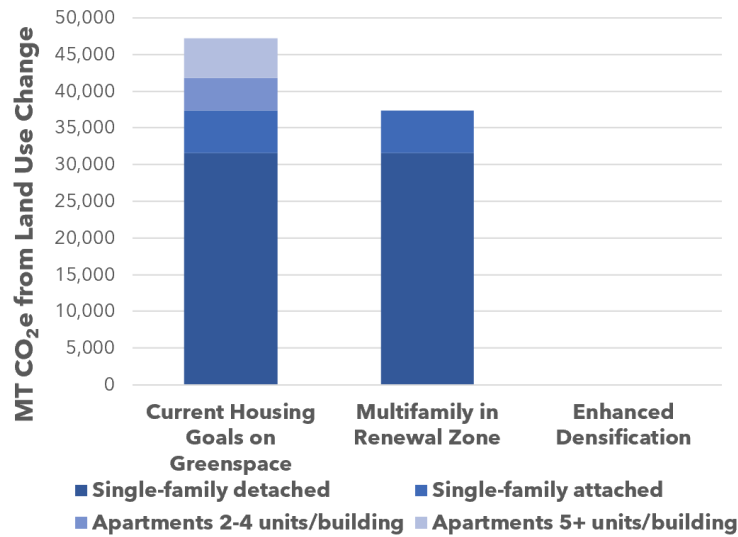
Impact of Climate Protection Program (CPP)

Unchecked Emissions and Existing Policy Forecast



Unchecked Emissions and Existing Policy Forecast (No CPP)





Since we met

Density memo

Looks at benefits from increased density downtown

- Reduced transportation & building emissions
- Lots of co-benefits
 - Health & safety, equity, economy, transit, quality of life, infrastructure
- Helps create more clear, measurable picture of holistic benefits from increased density

Next steps

- Plan adoption (*tonight*)
- Return with 5-year work plan with specific, prioritized actions for Council feedback & adoption (*late summer*)
 - Includes capacity and funding considerations
- Implementation (*continue ongoing efforts; put work plan into action*)
- Annual progress reports (*annually each summer*)
- Update plan and emissions inventory every 5 years (*2029*)



Direction on the work plan

Any specific actions you'd like to see?

Any specific lens/ criteria to apply?

- Aligned with existing work
- Highest emissions reductions
- Funding opportunities

Any other considerations?

Resolution 5775-24 adopting
the community Climate
Action Plan (CAP)

Questions?

