



Quarterly Update

City Council
March 22, 2021

Quarterly Update

- ***Tonight: recap progress on 5-year bond program***
- ***Preview 2021 construction plans***
- ***Introduce 2021 solicitation process for Neighborhood Traffic Safety projects***
- ***Next quarterly update: June 2021***
- ***Monitor progress at TualatinMovingForward.com***

2018

- May Election Night – Measure 34-282 (\$20 million) approved by voters
- September First project completed
- October First Annual Report

2019

- January Program manager on board; team in place
- January-May Three more projects completed
- August City Council Bus Tour
- October Second Annual Report

2020

- November 10 more projects completed
- December Third Annual Report; CIO Reports



115th Ave: Tualatin Rd to Hazelbrook Rd
First project completed September 2018!

Voters' Priorities



**CONGESTION
RELIEF**



**NEIGHBORHOOD
TRAFFIC SAFETY**



**ACCESS TO SCHOOLS
AND PARKS**

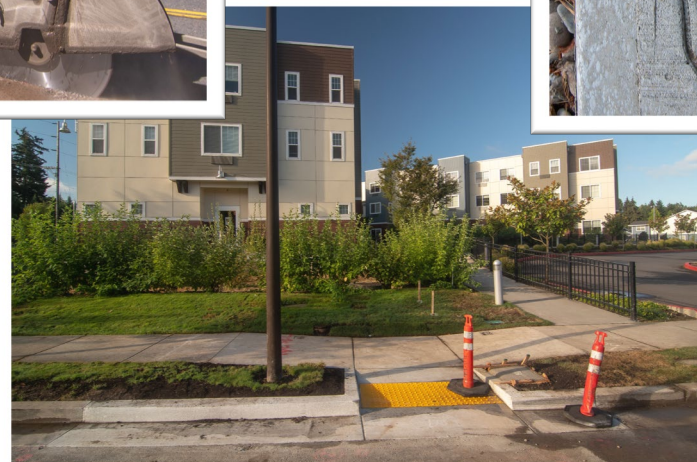
Program Delivery



35+ projects in 5 years!

T3 –
Tualatin
Transportation
Team
provides
Program
oversight!







- ✓ Mid-block crosswalk installed at High School south entrance
- ✓ Pedestrian-activated flashing beacons
- ✓ Sidewalks constructed to fill gaps

Built! – 9 More Projects in 2020



Borland Rd: Bridgeport Elementary to 60th Ave



90th Ave and Sweek Dr



Mohawk St: East of Martinazzi Ave at PGE



90th Ave Near Kaiser Permanente



Tualatin Road: between 105th Ave and 115th Ave

More projects:

- ✓ Nasoma Ln near Marquis Assisted Living
- ✓ Ibach St at Ibach Park
- ✓ Martinazzi Ave: between Avery St & Dakota Dr
- ✓ Grahams Ferry Rd at Dogwood St

Garden Corner Curves Construction Began in 2020



Moratoc Dr to Willow St upgrade SW 105th/SW Blake/SW 108th to roadway standards

- ✓ Extensive community engagement
- ✓ Construction began in August 2020
- ✓ Completion anticipated in 2021!

- ✓ Add a traffic signal to replace stop signs
- ✓ New sidewalks and crosswalks
- ✓ Improve bike lane striping
- ✓ Construction/completion in 2021!



In Design– Tualatin-Sherwood Rd/I-5



- ✓ Congestion relief and improved safety for Tualatin’s busiest intersection
- ✓ Extends third eastbound lane from Martinazzi to Fred Meyer access
- ✓ Lane reconfiguration, striping and signage reduces travel time
- ✓ Travel time from Boones Ferry to I-5 will be:
 - Morning rush hour reduced** from 6.5 minutes to 4 minutes
 - Afternoon rush hour reduced** 8 minutes to 6 minutes

“Today, peak hour traffic backs up on Martinazzi from Tualatin-Sherwood Road all the way to Boones Ferry. Customers and employees can’t get in or out of driveways.”

– Linda Moholt, former Tualatin Chamber of Commerce CEO

“Report Card” Monitors Progress

Tualatin Moving Forward Report Card December 2020

BUILT

	ESTIMATED COST
115th Ave: Tualatin Rd to Hazelbrook Rd	\$15,100
Boones Ferry Rd at High School	\$570,000
Borland Rd: Bridgeport Elementary to 60th Ave	\$104,600
Avery St: Boones Ferry Rd to Martinazzi Ave	\$31,000
Ibach St at Ibach Park	\$85,500
Sagert St at Atfalati Park	\$86,200
Boones Ferry Rd at Siletz Dr	\$297,500
Mohawk St: East of Martinazzi Ave at PGE	\$22,700
90th Ave and Sweek Dr	\$110,000
Martinazzi Ave: between Avery St and Dakota Dr	\$25,300
Tualatin Road: between 105th Ave and 115th Ave	\$140,500
90th Ave Near Kaiser Permanente	\$105,000
Grahams Ferry Rd at Dogwood St	\$200,000
Nasoma Ln: near Marquis Assisted Living	\$97,400

UNDERWAY

Garden Corner Curves: Morotoc Dr to Willow St	\$3,577,000
Tualatin-Sherwood Rd: Martinazzi Ave to I-5	\$2,339,000
Martinazzi Ave and Sagert St	\$2,407,000
95th Ave and Avery St (Tualatin Elementary School)	\$901,000
Hwy 99W: Pony Ridge Neighborhood to 124th Ave	\$558,000
Tualatin Rd: Sweek Dr to Community Park	\$525,000
Boones Ferry Corridor Sidewalk and Bike Lane Project	\$1,410,500
65th Ave near Meridian Park Hospital	\$130,000

FUTURE

Tualatin Rd and Teton Ave
Neighborhood Traffic Safety Program – Future Projects

Have a traffic safety problem in your neighborhood?

We may have solutions...



Safe crosswalks



Traffic calming



Bicycle safety

Let the City know by June 30 to be considered.
Go to www.tualatinmovingforward.com



Mejorar la Avenida 93

¿Qué cambios mejorarán la seguridad y reducirán el número de automovilistas que manejan a exceso de velocidad?

Tome esta ENCUESTA 

antes del 22 de enero
www.surveymonkey.com/r/93rdAve-Spanish

Para más información
Llame a Adrian Esteban a (503) 404-3880
mande un correo electrónico a tmf@tualatin.gov





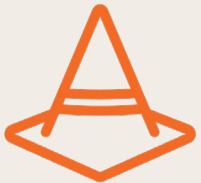

Now (COVID Safe)

- ✓ Mailings
- ✓ Email Updates
- ✓ Online Open Houses
- ✓ Virtual Neighborhood Meetings
- ✓ Social Media
- ✓ Surveys
- ✓ Yard Signs
- ✓ *Tualatin Today*
- ✓ Quarterly Council Updates
- ✓ CIO Contacts
- ✓ Phone Calls
- ✓ Gift Cards, Stickers

Earlier/Later

- Kitchen Table Meetings
- Door Hangers
- Open Houses
- Community Meetings
- In-Person Meetings

NEIGHBORHOOD TRAFFIC SAFETY PROGRAM



Bond-funded program for addressing safety at locations identified by the community



Projects can be implemented quickly, but spread out over the life of the program



Address areas throughout the City

[Suggest a Project / Sugerir un Proyecto !\[\]\(3211b5d1d968fc1665909b34f9f16010_img.jpg\)](#)

Are we hearing from everyone?

- ✓ *243 projects* submitted in 2020!
- ✓ 2021 strategic outreach focus on *equity*

PRÓXIMAMENTE... *aquí*

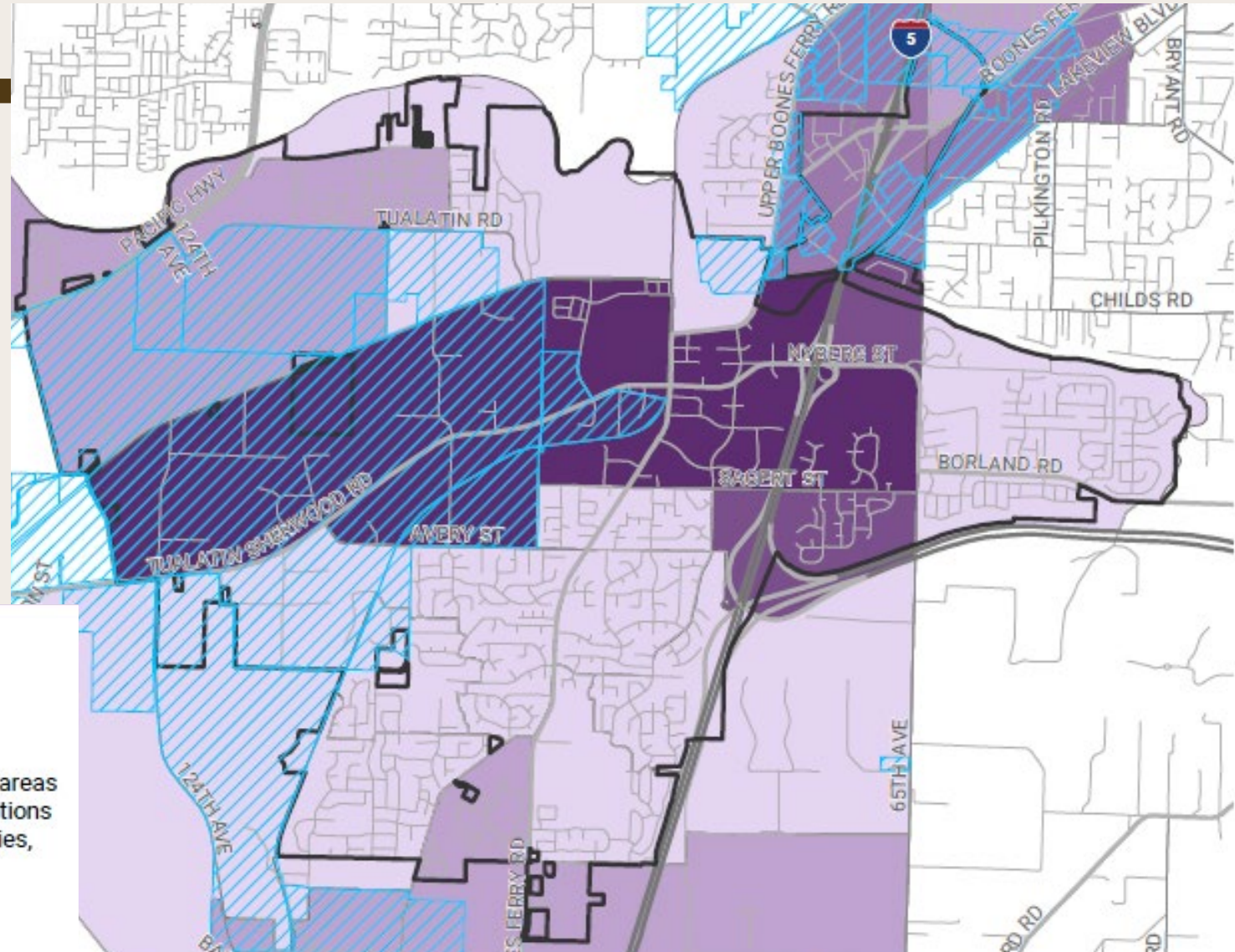
MEJORAMIENTOS DE TRANSPORTE

Traido a usted por....



TualatinMovingForward.com

Where are the concentrations of **historically disadvantaged or vulnerable populations**?



Tualatin Equity Analysis

Composite Equity Index

- Lower Equity Needs
- ↓
- Higher Equity Needs

- Industrial Zoning
- Tualatin City Limits

The composite equity index identifies areas of Tualatin that have higher concentrations of historically marginalized communities, compared to the City as a whole.

Data inputs: Race and income from the 2019 American Community Survey 5-Year Block Group Data

Effective website solicitation process remains open to all

Do you have a project in mind? Let us know!

It's easy – click on the **green** button!

The screenshot shows a website page with a dark blue navigation bar at the top containing the links: PROJECTS, FAQ, ANNUAL REPORTS, IN THE NEWS, and CONTACT. Below the navigation bar, there is a paragraph of text: "In May 2018, Tualatin voters approved a \$20 million G.O. bond measure to support high priority transportation projects, distributed citywide. The bond measure enables the City to move quickly to finance and build the priority projects within just a few years." This is followed by a bolded sentence: "Project priorities are guided by community input demonstrating broad support for Tualatin's three most pressing transportation issues:". Below this text are three circular icons in orange and white. The first icon is a traffic light, with the heading "Congestion Relief" and the text "New signals and added travel lanes and turning lanes on Tualatin-Sherwood Road and other streets". The second icon is a pedestrian walking, with the heading "Neighborhood Safety" and the text "New pedestrian crossings with signals and driver feedback signs that display speed". The third icon shows two children walking towards a school building, with the heading "Safe Access to Schools" and the text "New crosswalks, speed controls and sidewalks to and from schools". At the bottom center of the page is a large green button with the text "Suggest a Project" and a speech bubble icon.

DISCUSSION 



HOME

PRIORITY PROJECTS

CONTACT

In May 2018, Tualatin voters approved a \$20 million G.O. bond measure to support high priority transportation projects, distributed citywide. The bond measure enables the City to move quickly to finance and build the priority projects within just a few years.

Project priorities are guided by community input demonstrating broad support for Tualatin's three most pressing transportation issues:



Congestion Relief

New signals and added travel lanes and turning lanes on Tualatin-Sherwood Road and other streets



Neighborhood Safety

New pedestrian crossings with signals and driver feedback signs that display speed



Safe Access to Schools

New crosswalks, speed controls and sidewalks to and from schools