

Climate Action Plan

Project Update
April 26th – City Council

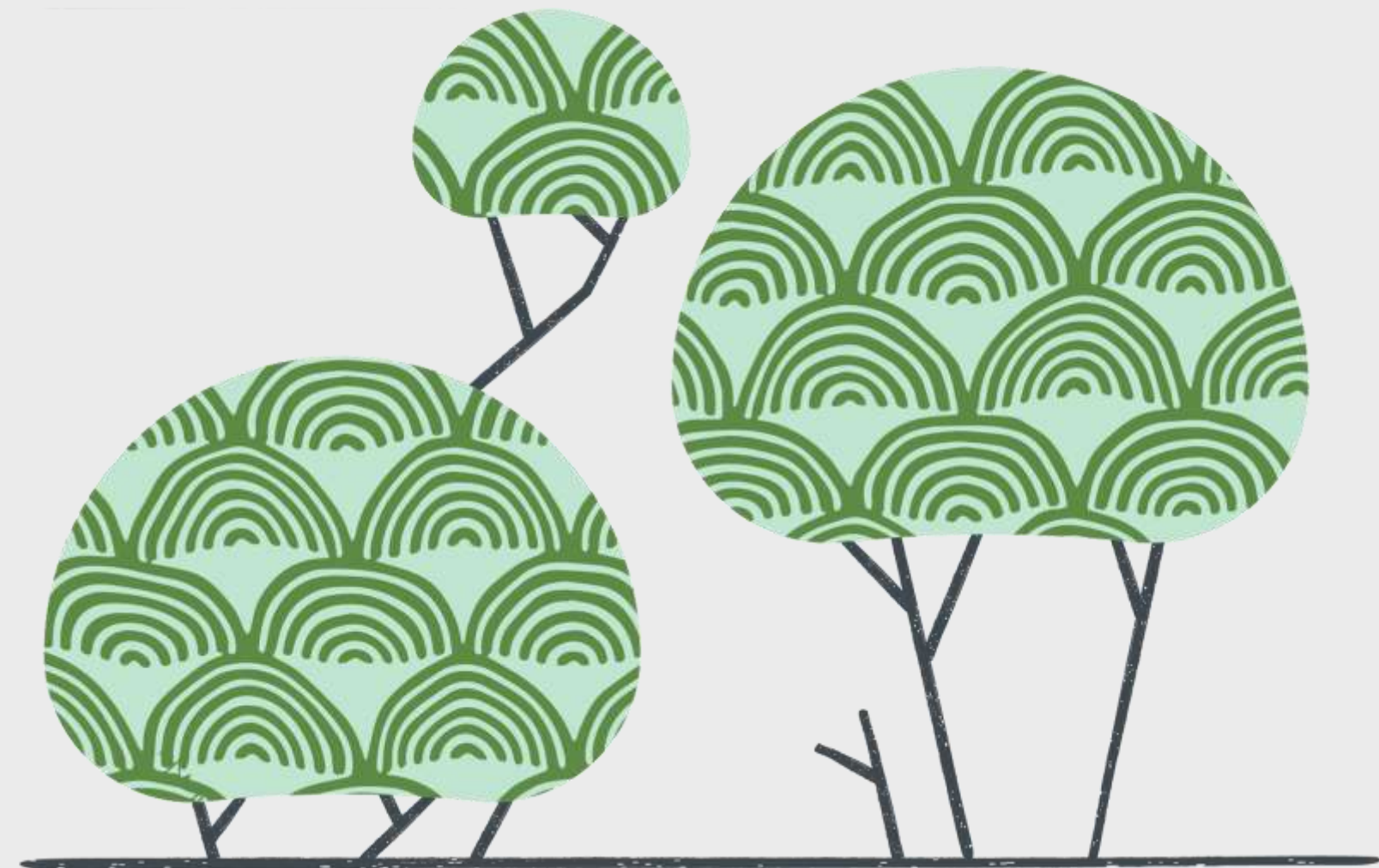
Overview

We are here tonight to get feedback on the proposed goal, guiding principles, and timeline for our Climate Action Plan.



Overview

- **Quick Refresh**
 - Previous Decisions
 - Resources Used
- **Project Update**
 - Goal
 - Guiding Principles
 - Phased Approach
- **Next steps**
- **Discussion**



Refresh

City Council Discussions, December 2020

OPTION C

- Community Plan**
- Greenhouse Gas (GHG) Inventory**
- Operational Plan**

TARGET AREAS

- Buildings & Energy**
- Urban Form & Land Use**
- Transportation**
- Consumption & Waste**
- Natural Resources**
- Resilience/Preparedness**
- Public Health**

Resources Used

City of Ashland

- Similar characteristics
- Similar scope and priorities
- Previously reviewed Climate Action Plan

Clackamas County

- Connection to Tualatin
- Reflection of similar priorities
- Only a few steps ahead

Greenhouse Gas Inventory RFPs

- Midpeninsula Regional Open Space District (California), Lane County (Oregon), Portland (Maine) City of Oakland Park (Florida), City of West Hollywood (California)
- Develop an RFP that includes the GHG inventory component



The Goal

Create a Climate Action Plan that is community-centric and action-oriented, which will establish a clear baseline for action to adapt to and mitigate the impacts of climate change in the City of Tualatin.



Engagement Plan

Purpose

- Guide planning process
- Use public input to inform project team
- Understand the needs of the whole community

The Plan

- Created by consultant with input from Public and City
- Tools for wide, meaningful engagement
- Points in process for engagement
- Example tools could be project webpage, advisory groups, surveys, forums, or open houses



Guiding Principles

Equity

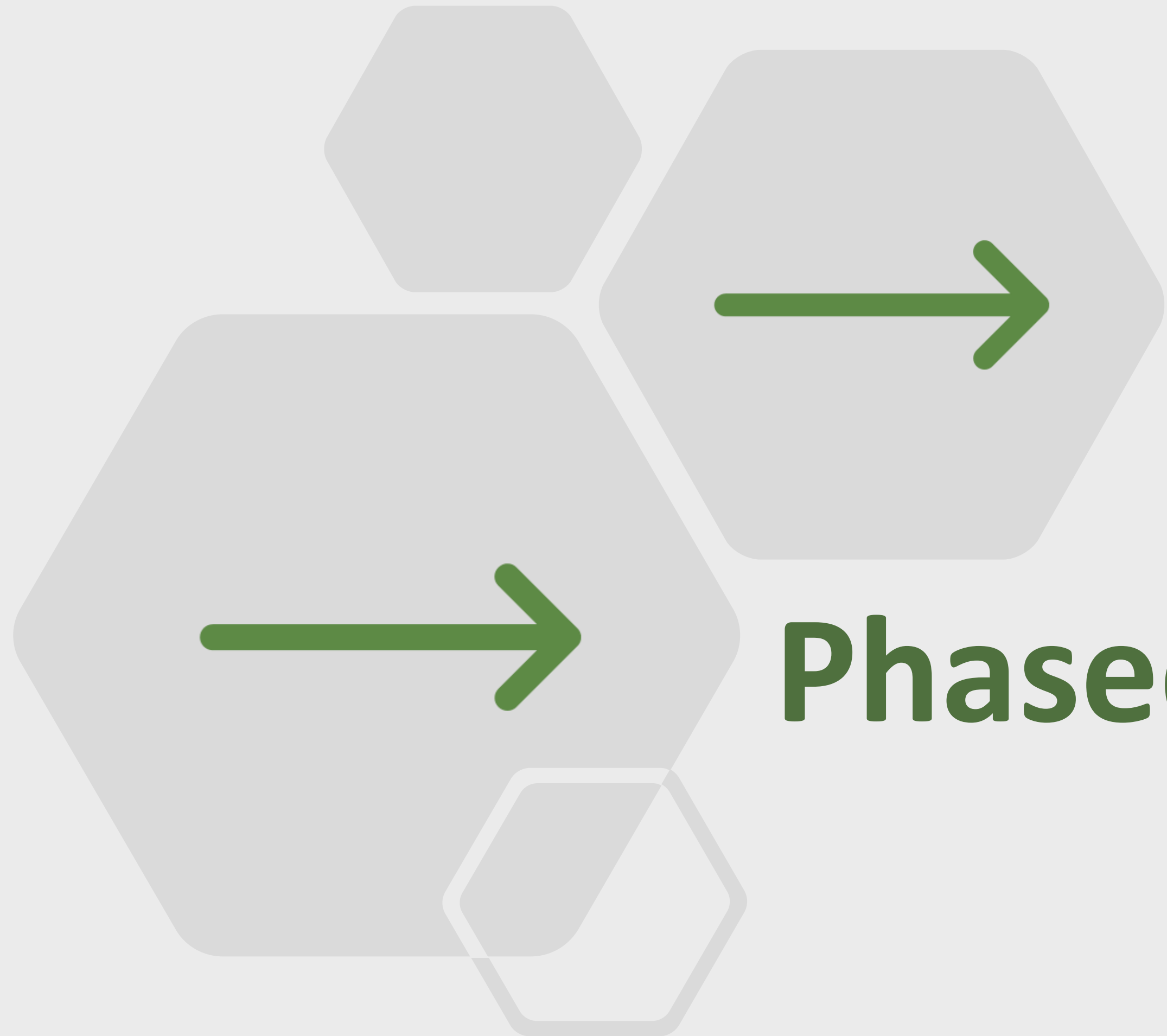
- Ensure we hear from and make a plan that works for everyone
- Consider who is benefited or harmed by plan implementation
- Be mindful of unintended impacts

Benefits

- Focus on benefits to community well-being
- Identify benefits which the community or city has deemed a priority
- Identify cost of action and inaction

Partnership

- Leverage partnerships with the community and across the region for strong, actionable plans
- Leverage existing work and regional standards when possible



Phased Approach

Phase 1

1. Greenhouse Gas (GHG) Inventory

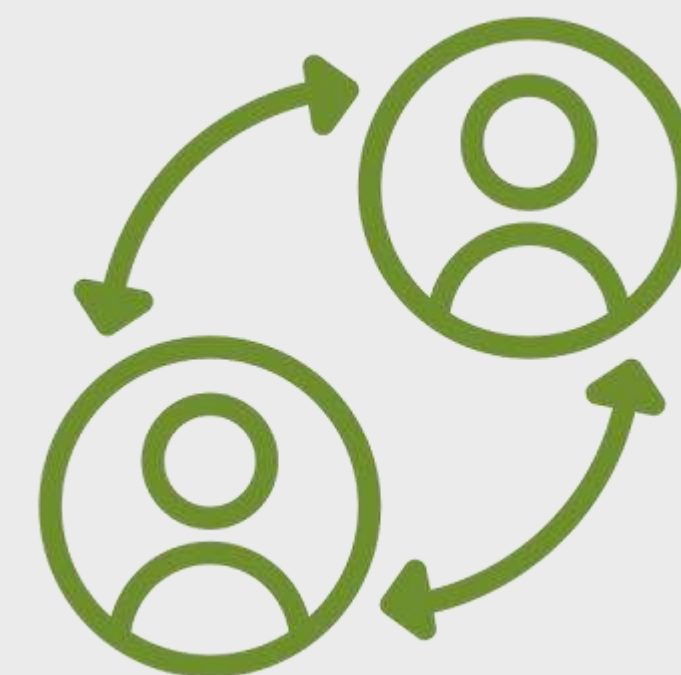
A study that quantifies greenhouse gas emissions generated within a specific boundary, analyzes the source and establishes the baseline for action.

3. Community Climate Action Plan

A community-based plan that focuses on community infrastructure, development, and action to reduce community-based emissions.

2. Engagement Plan

Development will include public input from across the entire community using tools such as a project webpage, online surveys, public forums, open houses, etc.



Types of Actions/ Strategies

Mitigation

Strategies aim to reduce greenhouse gas emissions by targeting the source of production.

Example:

Work with Clackamas County, TriMet and Metro to develop micro-transit from park-and-ride or light rail station to local destinations. (Milwaukie)

Sequestration

Strategies focus on developing/increasing “sinks” that capture or store gases, such as forests and soil.

Example:

Increase tree canopy to 40% by 2040. (Milwaukie)

Adaptation

Strategies focus on long-term actions to adapt to climate change impacts.

Example:

Manage forests to retain biodiversity, resilience, ecosystem function and services. Use best available science to inform fire management and planning. (Ashland)



Phase 2



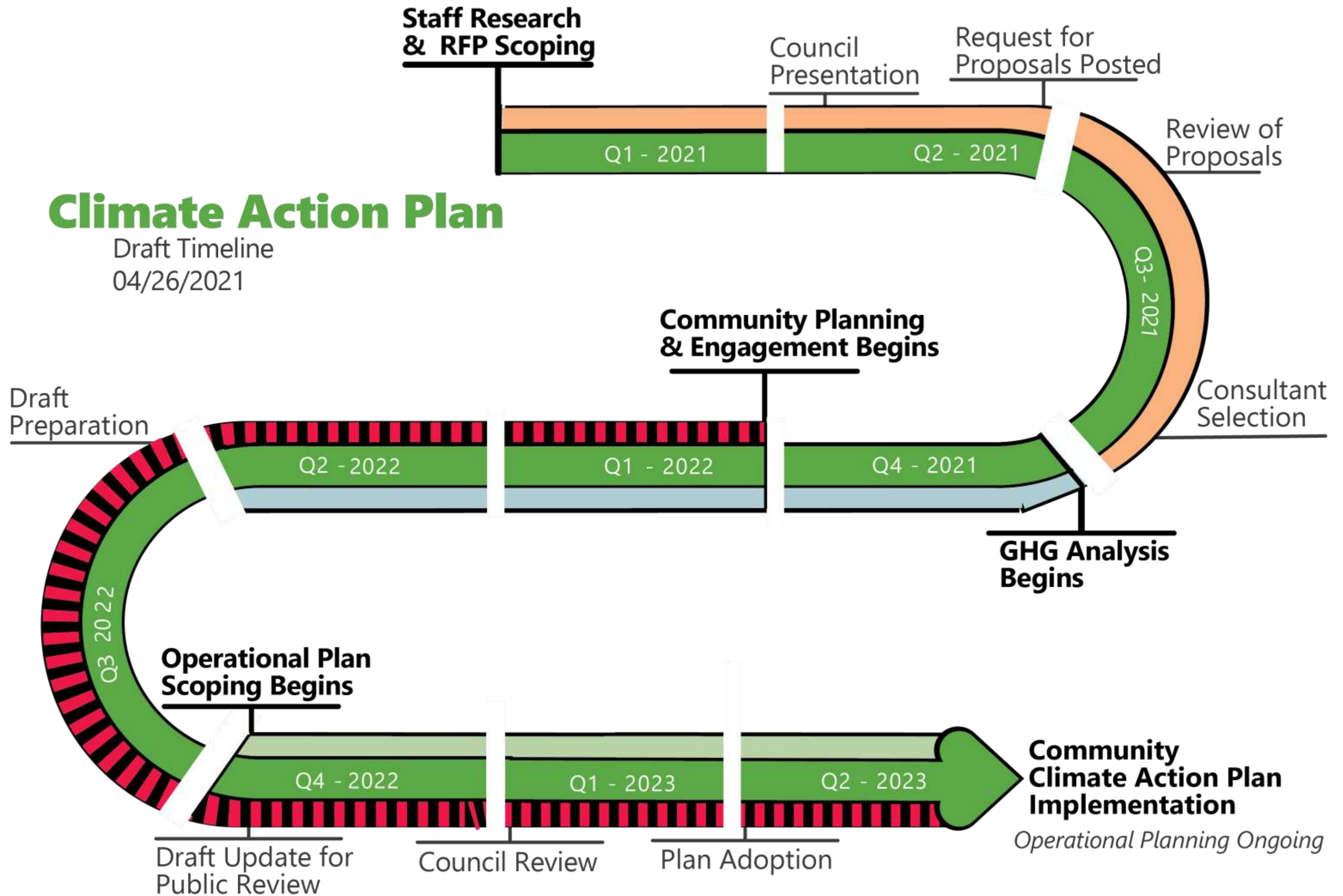
Operational Climate Action Plan

Operational, internal plan focused on actions City operations undertake to mitigate effects of and adapt to climate change.

Example:

- Enhance production of on-site solar energy from City facilities. (Ashland)

Next Steps



We'd like your feedback

- Does this feel like the right path forward?
- Did we miss anything?
- Any comments or questions?

