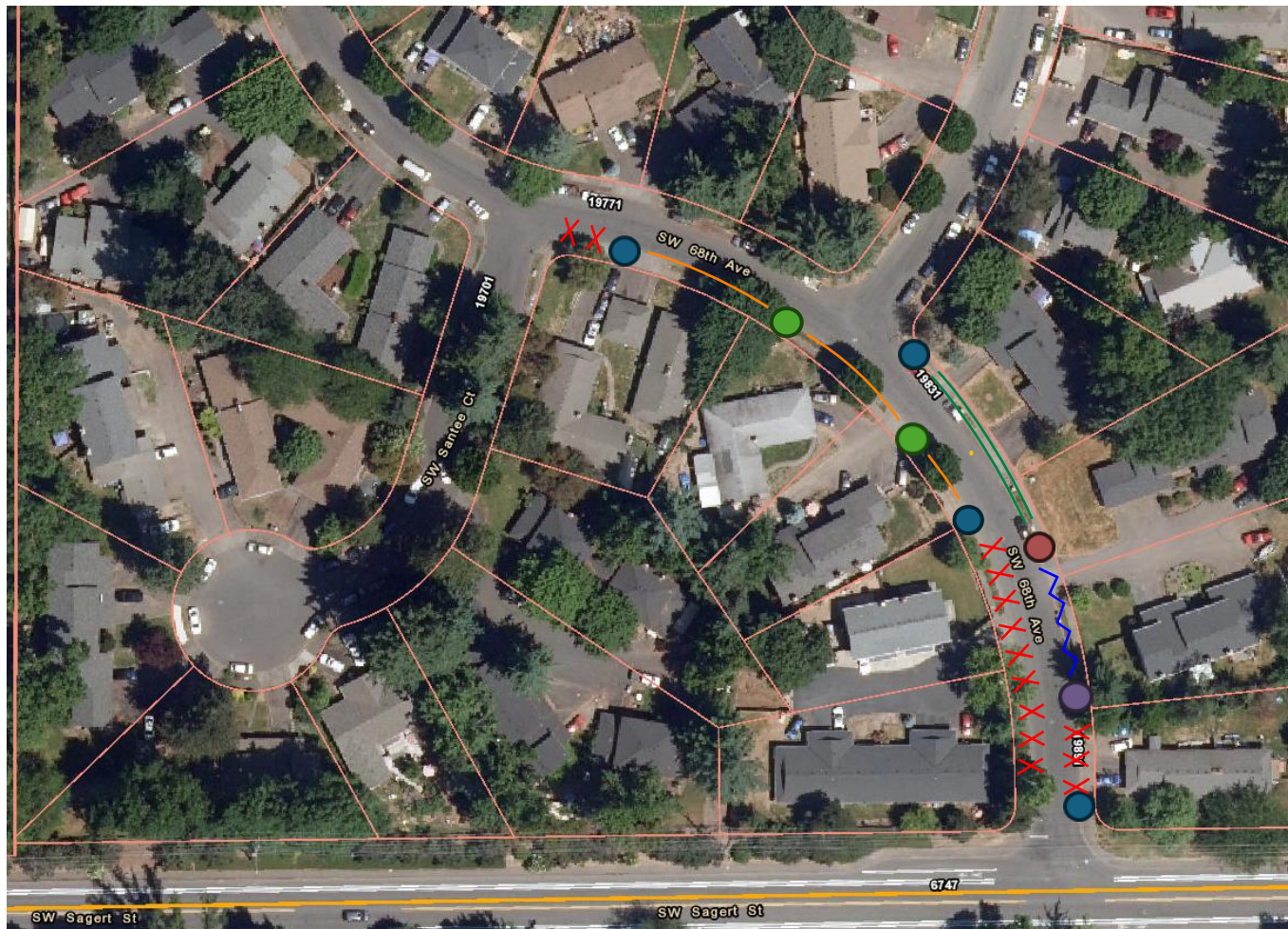


## SW 68<sup>th</sup> Ave (No Parking Sign changes)

- Add 'No Parking' [double arrow] signs (2) in between two existing 'No Parking' signs on the SW side
- Remove existing 'No Parking' sign on the NE side
- Add 'No Parking' [right arrow] sign (1) on the NE side



| LEGEND |  |
|--------|--|
|        | Existing signs to stay                                     |
|        | Existing sign to be removed                                |
|        | New signs to be installed (R7-1) [double arrow]            |
|        | New sign to be installed (R7-1) [right arrow]              |
|        | Parking is currently allowed and will remain allowed       |
|        | Newly allowed parking                                      |
|        | Newly prohibited parking                                   |
|        | Parking is currently prohibited and will remain prohibited |



R7-1