



# Residential Parking Permit Consultant Presentation

February 10, 2025

# History



- TMC 8-1-252 Residential Parking Zones
- Currently 10 locations designated as Residential Parking Zones
- Current process:
  - Community member coming to the City Council to request a specific area to be designated as a Residential Parking Zone.
  - The Council direct Staff to begin the process, as set by the City Manager.
  - Survey to residents effected and investigation of any complaints.
  - The Results are presented to the City Council for consideration of the zone.



# History



- Based upon feedback from Staff, the City Council, and the Community, an evaluation of the current process was clearly needed.
- As a result, the Police Department hired DKS Associates to assist in evaluating the current Residential Parking Permit program and the neighborhood parking issues around Tualatin High School.



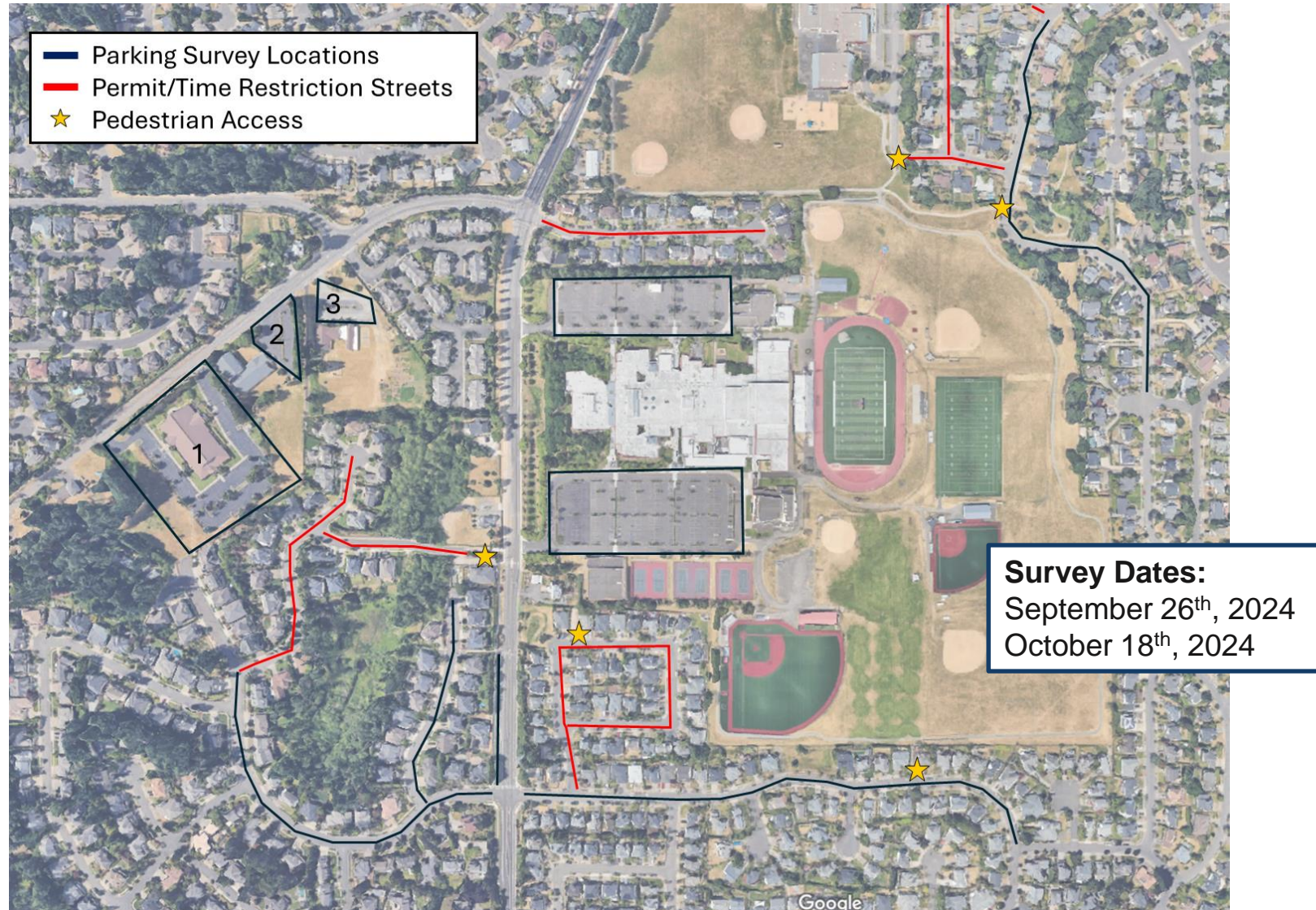
# TUALATIN PARKING STUDY

SHAPING A SMARTER  
TRANSPORTATION EXPERIENCE™  
DKSASSOCIATES.COM

*AN EMPLOYEE-OWNED COMPANY*



# PARKING LOCATIONS SURVEYED

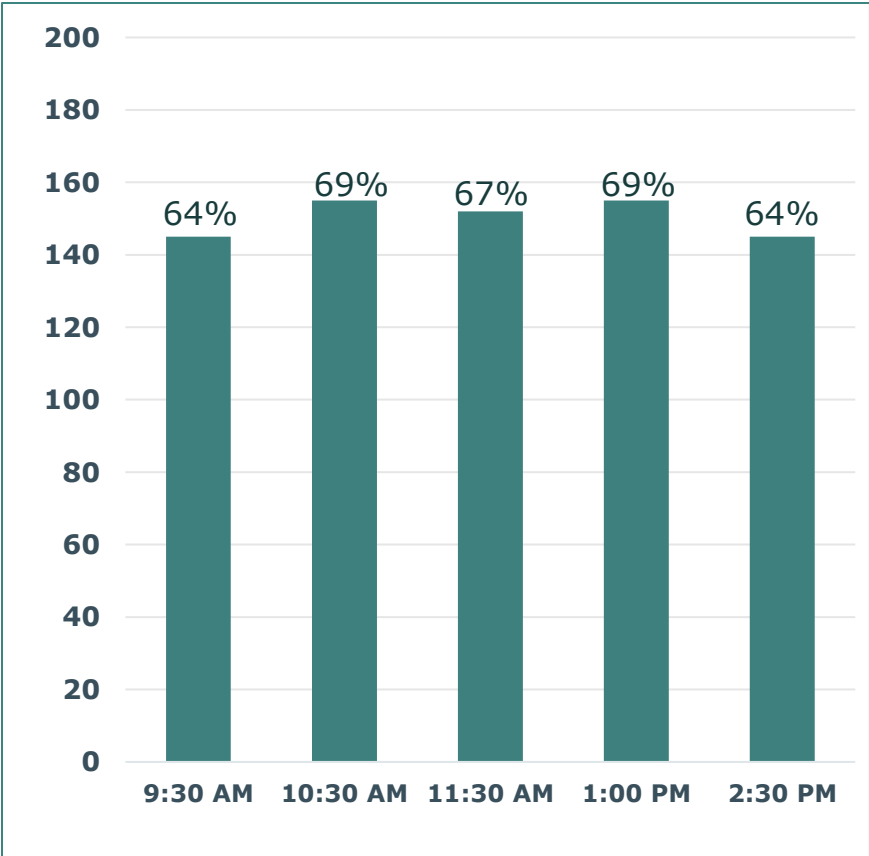


# OFF-CAMPUS PARKING FINDINGS

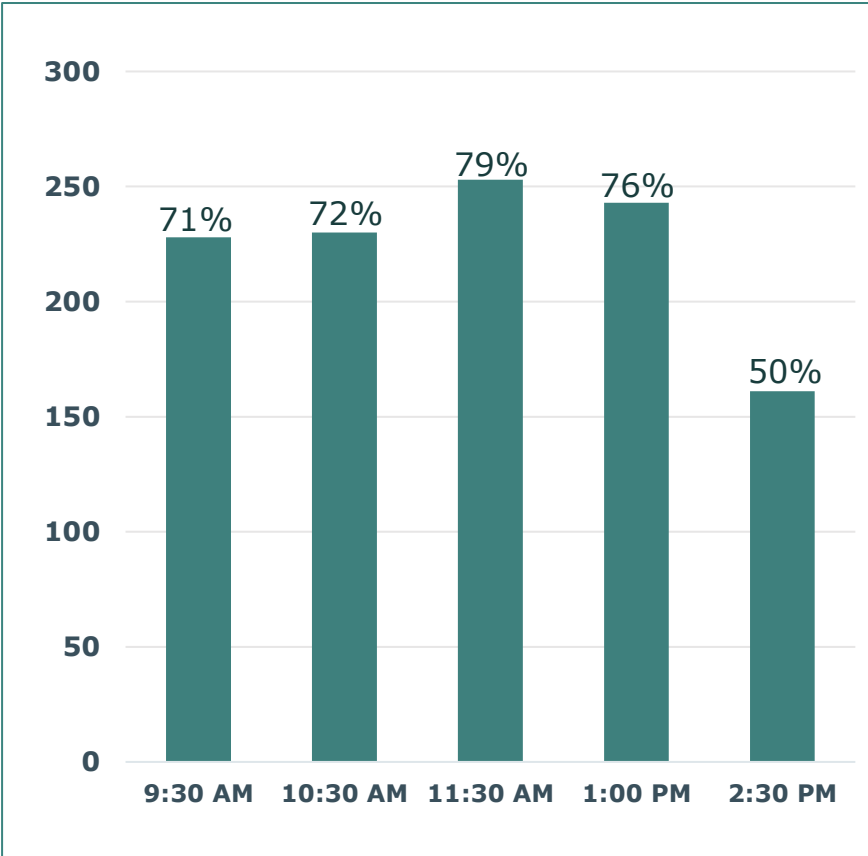
- Church Parking Lots
  - > No students observed parking here
  - > 0.2 miles – 0.25 miles walking distance from school
- Local Neighborhood Streets
  - > Most students observed parking on Boones Ferry Rd & Iowa Dr
- Permit-Only Streets
  - > Permits shown effective at keeping students from parking

# ON-CAMPUS PARKING LOT FINDINGS

Average number of parking stalls occupied:



**NORTH PARKING LOT - 225 TOTAL SPOTS**



**SOUTH PARKING LOT\* - 319 TOTAL SPOTS**

\* NUMBERED SPOTS ONLY – NO POOL, RESERVED, VISITOR, OR HANDICAP SPOTS

# BEFORE-SCHOOL and AFTER-SCHOOL OBSERVATIONS

- Significant vehicle queuing in the morning and afternoon make it difficult for vehicles to enter/exit the HS parking lots.
- In the morning, vehicles turning left into the south lot back up to the north lot entrance
- In the afternoon, vehicles wait up to 4+ minutes to turn left out of south parking lot.
- Because of this, vehicles will make a right turn out of the lot, but then proceed to make illegal U-turns on BFR





# AFTER-SCHOOL QUEUING



# KEY ISSUES IDENTIFIED

- Traffic on Boones Ferry Road
  - > Vehicles turning out of school parking lot cannot find gaps in traffic on BFR, creating long delays and queues in parking lots
  - > Queues discourage students from using on-campus parking
- High School Parking Permit Process
  - > Many numbered parking stalls were unoccupied all day in the both the north lot (staff) and south lot (students)

# IMPROVEMENT IDEAS

## Short Term Improvements

- > Revisit high school parking permit process
  - First-come first serve for students
  - designate unassigned stalls in north lot as “student overflow”
- > Carpool incentives (e.g., designated carpool stalls near front entrances)
- > Stage student release times
- > Shift school hours (to avoid overlapping with peak traffic on Boones Ferry Road)

## Mid- to Long-Term Improvements

- > Install a traffic signal at south parking lot entrance
- > Connect north and south lots to improve circulation

# Residential Parking Zones

## 1. Residential Parking Zones (Permits with Fees)

- > **Neighborhood must bring forth a proposal**, 60% support
- > City to review proposal, investigate parking usage, consider police reports and **comments from engineering/public works dept, emergency services.**
- > RPZ proposal and **ballots are sent to residents**, 70% must be returned, 75% vote yes to pass
- > RPZ automatically **renews annually** unless 60% of residents support removal or do not follow rules
- > Residential Parking **permits require fee** (\$15-\$24 per vehicle)
- > Cities that use this system: Wilsonville, Tigard, Salem

# Residential Parking Zones

## 2. Residential Parking Zones (with Permits)

- > Residents bring forward RPZ request.
- > **City Council approves RPZs.** Street is signed as No Parking Except with Permit during School Hours.
- > City Manager must identify the procedures, standards, rules, and details of permits. **Permits do not cost money.**
- > Similar to Tualatin's current process
- > Cities that use this system: West Linn, Sherwood, Newberg

## 3. Residential Parking Zones (No Permits)

- > Streets near high school are signed as either "No Parking 8am – 3pm" or "Two-Hour Only Parking 8am – 3pm"
- > **No permits are administered**
- > Cities that use this system: Lake Oswego, Canby

# Residential Parking Zone Recommendation

- Implement a detailed RPZ request process.
- Process **involves other city departments** (engineering, public works, emergency response, trash/waste management, etc.)
- RPZ approval is based on **vote by residents** (not City Council resolution).
- **Permits will cost money** but will go through a ballot that requires majority yes vote by affected residents.
- Starting in 0-1 years, the **existing RPZs will be required to register vehicles** and start paying permit fees or will have the opportunity to remove the RPZ instead
- This will be a more robust permit process but will put the burden of **proof and responsibility on the residents** and will provide a small income to offset the administrative efforts.

# THANK YOU

**JENNA BOGERT**

P.E. (OR, WA)

Jenna.Bogert@dksassociates.com

**971.332.5316**

SHAPING A SMARTER  
TRANSPORTATION EXPERIENCE™  
DKSASSOCIATES.COM

*AN EMPLOYEE-OWNED COMPANY*



# Next Steps

- The following are suggested recommendations based upon the findings;
- Gather feedback from the City Council regarding the consultant's report.
- Continue to communicate with Tualatin HS and TTSD Administration to discuss mitigation strategies to lessen neighborhood parking.
- Allow Staff to begin the internal discussion into restructuring the current procedures and process for Residential Parking Permit Zones
- Bring forth recommendations for updates to TMC 8-1-252



CITY of  
TUALATIN



# Questions?



**CITY** *of*  
**TUALATIN**